

PERFORMANCE HIGHLIGHTS

2010-2011 SRC Corporate Social Responsibility Report



Global
Reporting
Initiative™

Organizational
Stakeholder

2011



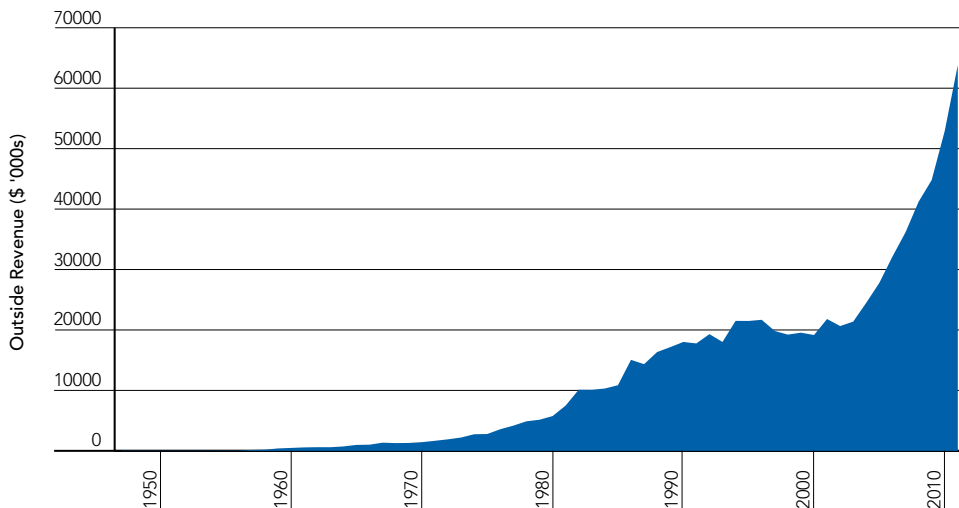
smart science solutions

SRC assists Saskatchewan industry in becoming globally competitive by responsibly applying science and technology.

This year SRC submitted its inaugural Corporate Social Responsibility Report to the Global Reporting Initiative™, which sets international guidelines for sustainability reporting. The highlights from this report reflect our commitment to corporate responsibility and accountability. They exemplify how SRC employees and their work are contributing to positive **economic**, **environmental** and **social** impacts.

ECONOMIC PERFORMANCE

ECONOMIC VALUE - TOTAL REVENUE \$63.6M



ECONOMIC IMPACT

\$527M

Our annual economic impact assessment shows that our work contributed to over **\$527 million** in direct economic benefits to the province.

JOB CREATION

1,200

Created or maintained more than **1,200** jobs in Saskatchewan.

IMPACT PROJECTS

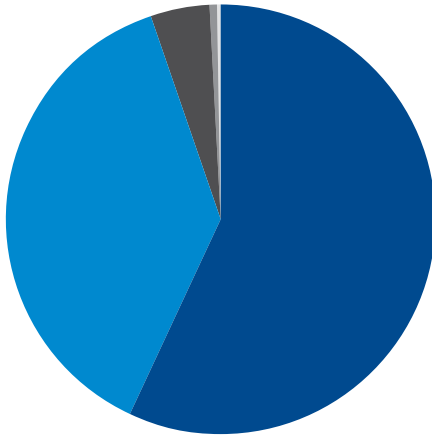
\$37M

Projects valued at **\$37 million** were focused on achieving positive environmental and/or social impacts.

ENVIRONMENTAL PERFORMANCE

GREENHOUSE GAS EMISSIONS

SRC's total greenhouse gas (GHG) emissions were 9,283 tonnes CO₂e.



- ELECTRICITY: **5307** tonnes CO₂e
- HEATING & COOLING: **3516** tonnes CO₂e
- EMPLOYEE COMMUTING: **409** tonnes CO₂e
- MOBILE COMBUSTION: **47** tonnes CO₂e
- NON-ROAD EMISSIONS: **4** tonnes CO₂e



ELECTRICITY USE

Total energy consumption included total electricity use of 6,647,053 kilowatt hours.



NATURAL GAS CONSUMPTION

Total natural gas use of 1,684,935 m³ or 65.2 TeraJoules.



GHG REDUCTIONS & ENERGY SAVINGS

Through projects for clients, SRC contributed to greenhouse gas reductions of over 9,051 tonnes and energy savings of over 24M kilowatt hours.



WASTE REDUCTION

Over 794kg of surplus equipment and supplies were diverted from landfill sites through recycling materials and equipment auctions. SRC employees used recycling stations for beverage containers, paper, ink cartridges, batteries, electronics and participated in a compact fluorescent light bulb exchange program.

SOCIAL PERFORMANCE

COMMUNITY INVOLVEMENT

SRC coordinates activities that will benefit our communities both at the corporate level and through an employee-driven CSR committee. During 2010-11, activities included:

- SRC sponsoring two scholarships through its Technology-in-Action awards fund.
- SRC employees raising funds for the Heart and Stroke Foundation of Canada, the Friendship Inn soup kitchen and United Way.
- Employees making holiday hampers for less fortunate families.
- Collecting shoes that were donated to The Bridge on 20th in Saskatoon, Carmichael Outreach in Regina and Prince Albert Share-a-Meal Food Bank.

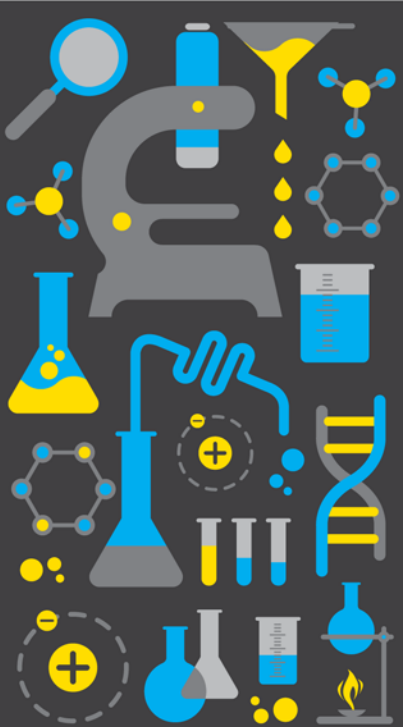
EMPLOYEE SAFETY TRAINING

Safety is the over-riding priority for SRC and a focus of SRC's corporate culture. An all-employee average of 12 hours per year/per employee was spent on safety training in 2010-11.

EMPLOYEE SAFETY

A total of 42 days was lost due to safety incidents, which resulted in a Lost Time Incident (LTI) rate of 1.55 per 200,000 working hours. SRC's 2010-11 target was a rating of less than 1.35 LTIs.

To view the full SRC Corporate Social Responsibility Report, visit www.src.sk.ca/csr



SRC (SASKATOON)
125 – 15 Innovation Boulevard
Saskatoon, SK Canada
S7N 2X8
Tel: 306-933-5400
Fax: 306-933-7446

SRC (REGINA)
129 – 6 Research Drive
Regina, SK Canada, S4S 7J7
Tel: 306-787-9400
Fax: 306-787-8811

SRC (PRINCE ALBERT)
101 – 1061 Central Avenue
Prince Albert, SK Canada
S6V 4V4
Tel: 306-765-2840
Fax: 306-765-2844

Toll-free inside Saskatchewan
1-877-772-7227
www.src.sk.ca
info@src.sk.ca

