



# SRC CLIMATE REFERENCE STATION DAILY DATA REPORT

**SASKATOON STATION 4057180**

52°09' N 106°36' W 497 m asl Estab. 1963

Preliminary **MAY 2016**

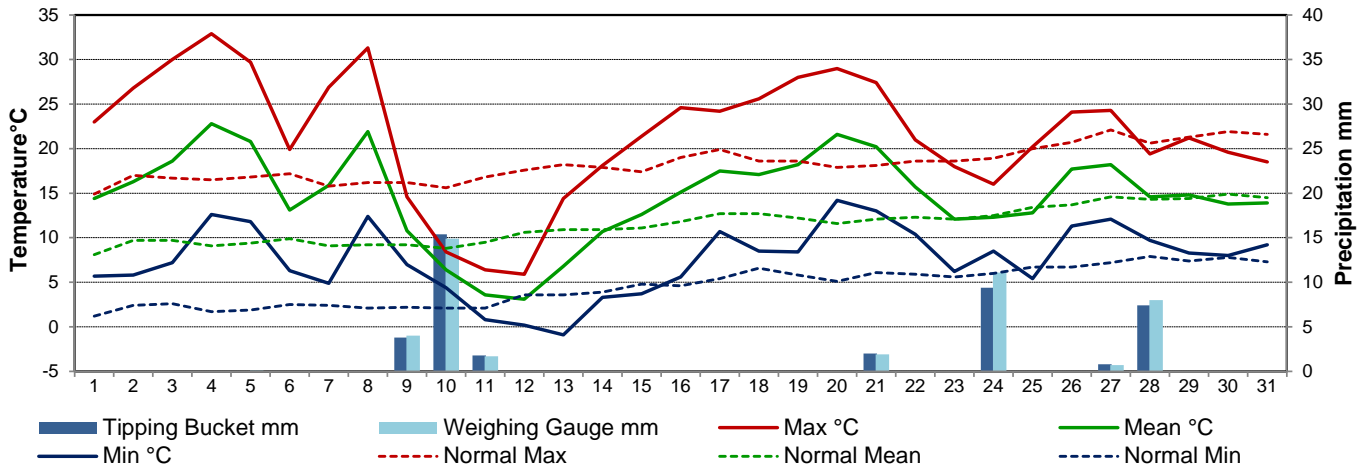
Day	Temperature						Degree-days			Precipitation			Relative Humidity		Station Pressure (sea level)	
	Max	Normal Max	Min	Normal Min	Mean	Normal Mean	Growing	Heating	Cooling	Weighing Gauge	Tipping Bucket	Notes	Max ½ hr Avg	Min ½ hr Avg	Max ½ hr Avg	Min ½ hr Avg
	°C	1981-2010	°C	1981-2010	°C	1981-2010	5°C base	18°C base	18°C base	mm	mm		%	%	mbar	mbar
1	23.0	14.9	5.7	1.2	14.4	8.1	9.4	3.6	0.0	0.0	0.0		57	18	1025	1016
2	26.8	17.0	5.8	2.4	16.3	9.7	11.3	1.7	0.0	0.0	0.0		73	17	1017	1014
3	30.0	16.7	7.2	2.6	18.6	9.7	13.6	0.0	0.6	0.0	0.0		72	15	1017	1013
4	32.9	16.5	12.6	1.7	22.8	9.1	17.8	0.0	4.8	0.0	0.0		56	10	1013	1005
5	29.7	16.8	11.8	1.9	20.8	9.4	15.8	0.0	2.8	0.1	0.0	light scattered sm showers	66	19	1015	1005
6	19.9	17.2	6.3	2.5	13.1	9.9	8.1	4.9	0.0	0.0	0.0	smoke from forest fires	79	15	1020	1015
7	26.9	15.8	4.9	2.4	15.9	9.1	10.9	2.1	0.0	0.0	0.0	smoke from forest fires	61	14	1019	1004
8	31.3	16.2	12.4	2.1	21.9	9.2	16.9	0.0	3.9	0.0	0.0	smoke from forest fires	43	17	1004	993
9	14.6	16.2	7.0	2.2	10.8	9.2	5.8	7.2	0.0	4.0	3.8	smoke from forest fires /	90	25	1013	1001
10	8.4	15.6	4.4	2.1	6.4	8.8	1.4	11.6	0.0	14.9	15.4	rain	92	71	1018	1013
11	6.4	16.8	0.8	2.1	3.6	9.5	0.0	14.4	0.0	1.7	1.8	light rain	92	73	1022	1017
12	5.9	17.6	0.2	3.6	3.1	10.6	0.0	14.9	0.0	0.0	0.0		93	58	1027	1021
13	14.4	18.2	-0.9	3.6	6.8	10.9	1.8	11.2	0.0	0.0	0.0		88	26	1029	1026
14	18.1	17.9	3.3	3.9	10.7	10.9	5.7	7.3	0.0	0.0	0.0	smoke haze	71	21	1026	1018
15	21.4	17.4	3.7	4.8	12.6	11.1	7.6	5.4	0.0	0.0	0.0	smoke haze	73	19	1018	1014
16	24.6	19.0	5.6	4.6	15.1	11.8	10.1	2.9	0.0	0.0	0.0	smoke haze	74	17	1019	1016
17	24.2	19.9	10.7	5.4	17.5	12.7	12.5	0.5	0.0	0.0	0.0	Spring maintenance	68	17	1020	1012
18	25.6	18.6	8.5	6.6	17.1	12.7	12.1	0.9	0.0	0.0	0.0		81	24	1012	1006
19	28.0	18.6	8.4	5.8	18.2	12.2	13.2	0.0	0.2	0.0	0.0		79	21	1006	1004
20	29.0	17.9	14.2	5.1	21.6	11.6	16.6	0.0	3.6	0.0	0.0		62	23	1012	1006
21	27.4	18.1	13.0	6.1	20.2	12.1	15.2	0.0	2.2	1.9	2.0		84	35	1013	1001
22	21.0	18.6	10.4	5.9	15.7	12.3	10.7	2.3	0.0	0.0	0.0		89	32	1002	998
23	18.0	18.6	6.2	5.6	12.1	12.1	7.1	5.9	0.0	0.0	0.0		90	42	1005	997
24	16.0	18.9	8.5	6.0	12.3	12.5	7.3	5.7	0.0	11.1	9.4	t-storm, showers	92	65	1011	1006
25	20.2	20.0	5.4	6.7	12.8	13.4	7.8	5.2	0.0	0.0	0.0		97	49	1012	1010
26	24.1	20.7	11.3	6.7	17.7	13.7	12.7	0.3	0.0	0.0	0.0		83	30	1011	1009
27	24.3	22.1	12.1	7.2	18.2	14.6	13.2	0.0	0.2	0.7	0.8	showers	86	34	1012	1010
28	19.4	20.6	9.7	7.9	14.6	14.3	9.6	3.4	0.0	8.0	7.4	rain	92	46	1013	1010
29	21.2	21.3	8.3	7.4	14.8	14.4	9.8	3.2	0.0	0.0	0.0		95	38	1012	1010
30	19.6	21.9	8.0	7.8	13.8	14.9	8.8	4.2	0.0	0.0	0.0		95	41	1016	1012
31	18.5	21.6	9.2	7.3	13.9	14.5	8.9	4.1	0.0	0.0	0.0		93	44	1017	1016
Total							301.7	122.9	18.3	42.4	40.6		Extreme / Date	Extreme / Date	Extreme / Date	Extreme / Date
Avg	21.6	18.3	7.6	4.6	14.6	11.5	1981-2010 Normal			39.4	1981-2010 Normal					
Extreme Date	32.9		-0.9				206.9	209.3	6.3	87.1 Cumulative			97	10	1029	993
	4		13							100.9 Cumulative Normal			25	4	13	8

Note: Red numbers indicate manual calculation; Red cell indicate data not available

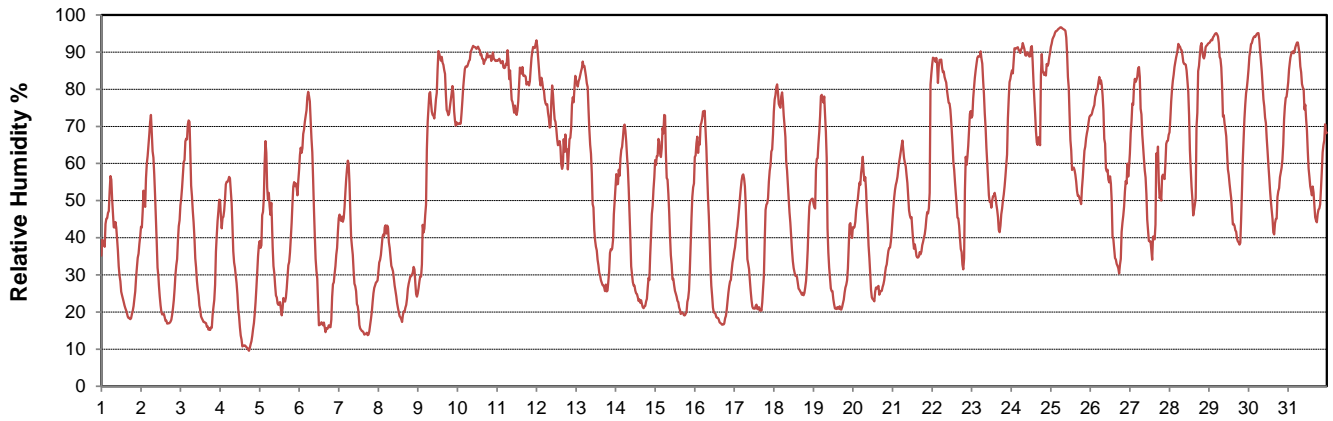
**SRC proudly recognizes the following CRS supporters:**



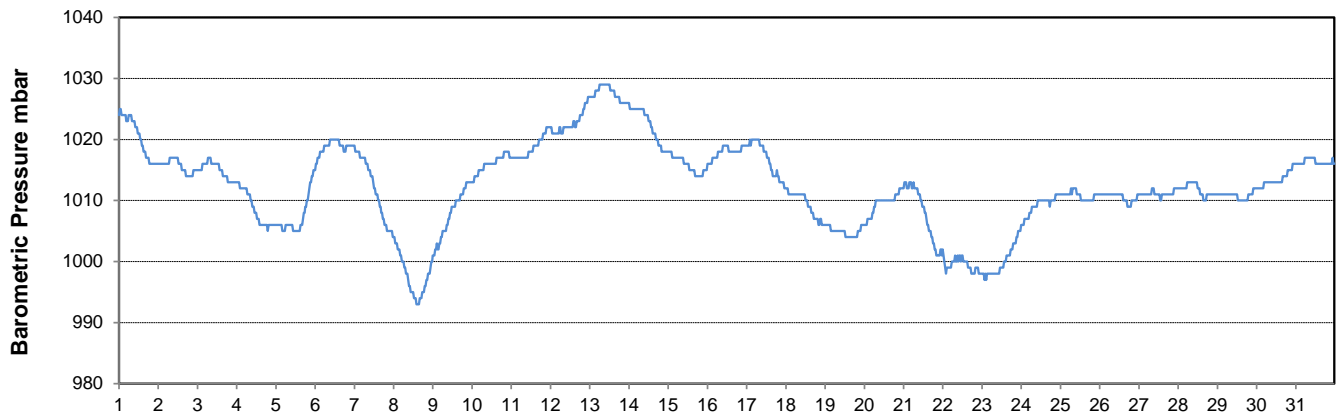
### Temperature and Precipitation for May 2016



### Relative Humidity for May 2016



### Barometric Pressure Corrected to Sea Level for May 2016





# SRC CLIMATE REFERENCE STATION DAILY DATA REPORT

**SASKATOON STATION 4057180**

52°09' N 106°36' W 497 m asl Estab. 1963

Preliminary **MAY 2016**

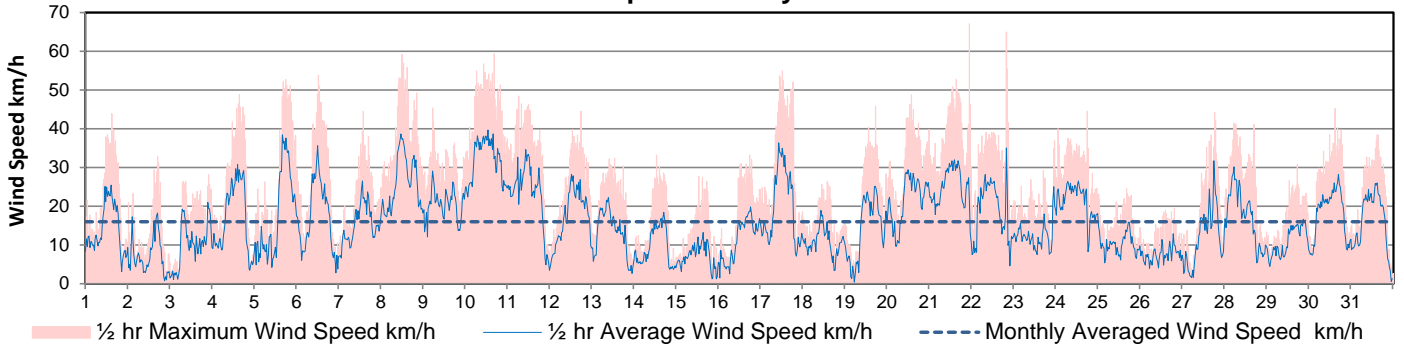
Day	Wind Gust			Soil Temperatures at 0900hrs								Soil Moisture 30 cm	Radiation				
	Max	Direction	Time	Surface	5 cm	10 cm	20 cm	50 cm	100 cm	150 cm	300 cm		0900hrs	Bright Sunshine	Possible	% Possible	Global
	km/h			°C	°C	°C	°C	°C	°C	°C	°C	%	hours	hours		MJ/m <sup>2</sup>	MJ/m <sup>2</sup>
1	43.9	W	14:52	13.5	9.5	10.0	10.0	8.0	5.5	4.5	4.5	22	12.7	15.0	84.9	23.6	4.6
2	32.9	N	16:50	14.0	10.0	10.5	10.5	8.5	5.5	5.0	4.5	21	14.3	15.0	95.2	24.3	3.8
3	28.2	SSE	21:40	19.0	11.5	11.5	11.5	9.0	6.0	5.0	4.5	21	14.4	15.1	95.5	24.2	3.7
4	48.8	W	15:00	21.5	13.0	13.5	13.0	9.5	6.0	5.0	4.5	21	14.0	15.1	92.5	25.9	2.4
5	52.7	N	17:57	22.0	14.0	14.5	13.5	10.5	6.5	5.5	4.5	20	12.3	15.2	80.9	22.8	5.9
6	53.8	NNW	12:03	12.5	13.0	13.5	13.5	11.0	7.0	5.5	4.5	20	11.2	15.3	73.4	23.7	5.1
7	44.5	W	13:41	14.0	11.5	12.5	13.0	11.0	7.0	5.5	5.0	20	14.0	15.3	91.4	21.4	7.6
8	59.1	SSW	11:46	17.5	13.0	13.5	13.0	11.0	7.5	6.0	5.0	19	13.9	15.4	90.4	24.5	5.0
9	45.4	NW	5:26	9.0	13.5	14.0	14.0	11.5	7.5	6.0	5.0	19	0.2	15.4	1.3	5.0	3.8
10	59.3	NNE	16:03	4.5	10.0	11.0	11.5	11.0	7.5	6.0	5.0	18	0.0	15.5	0.0	3.0	2.4
11	48.4	NNE	6:15	4.5	8.0	8.5	9.5	10.0	8.0	6.5	5.0	19	2.3	15.5	14.8	10.1	7.4
12	44.5	N	12:36	4.0	7.0	7.5	8.5	9.0	8.0	6.5	5.0	19	0.6	15.6	3.8	10.3	7.7
13	32.4	NNE	17:33	5.5	5.5	6.0	7.5	8.5	7.5	6.5	5.0	19	10.1	15.6	64.6	23.5	6.6
14	33.2	NW	12:37	10.5	8.0	8.5	9.0	8.5	7.5	6.5	5.0	18	11.6	15.7	73.9	21.9	7.4
15	27.7	NNE	12:40	11.5	8.0	9.0	9.5	9.0	7.5	6.5	5.5	18	14.2	15.7	90.2	24.8	6.3
16	33.2	SSW	17:53	14.5	10.0	10.5	10.5	9.0	7.5	6.5	5.5	18	14.0	15.8	88.7	26.6	4.4
17	54.9	SSW	12:15	18.5	12.0	12.5	12.0	10.0	7.5	6.5	5.5	18	8.7	15.8	54.9	18.6	7.4
18	26.4	NW	13:59	15.5	12.0	12.5	12.0	10.0	7.5	6.5	5.5	18	13.0	15.9	81.8	21.4	8.2
19	45.8	ESE	17:16	19.5	13.0	13.5	13.0	10.5	7.5	6.5	5.5	18	13.5	15.9	84.7	25.5	5.5
20	48.7	E	13:52	20.0	15.0	15.0	14.5	11.5	8.0	7.0	5.5	17	10.9	16.0	68.2	24.0	8.7
21	67.1	SSW	22:56	18.0	15.5	16.0	15.0	12.0	8.0	7.0	5.5	17	10.6	16.0	66.1	22.6	7.7
22	64.9	WSW	19:56	11.0	15.5	16.5	15.5	12.5	8.5	7.0	5.5	17	6.0	16.1	37.3	18.3	6.7
23	36.9	NNE	23:09	12.0	13.0	14.0	14.5	12.5	8.5	7.0	6.0	16	8.1	16.1	50.2	18.5	6.5
24	44.5	E	17:57	9.5	13.5	14.0	14.0	12.0	9.0	7.5	6.0	16	1.1	16.2	6.8	7.8	5.7
25	24.6	NE	16:13	10.0	11.5	12.0	12.5	12.0	9.0	7.5	6.0	18	5.3	16.2	32.7	18.0	8.2
26	19.5	SSE	19:01	16.5	14.5	14.5	14.0	12.0	9.0	7.5	6.0	17	8.7	16.2	53.6	22.0	7.1
27	44.3	E	18:07	18.5	15.5	16.0	15.0	12.5	9.0	8.0	6.0	17	9.1	16.3	55.9	18.9	5.4
28	41.5	SE	5:06	12.0	14.5	15.0	15.0	13.0	9.5	8.0	6.0	17	1.2	16.3	7.4	9.9	6.1
29	30.7	NNW	17:26	14.0	13.0	13.5	13.5	12.5	9.5	8.0	6.0	17	12.8	16.4	78.3	27.0	4.3
30	45.1	NE	14:41	12.5	14.5	15.0	14.5	12.5	9.5	8.0	6.0	17	8.6	16.4	52.5	22.3	9.3
31	38.4	NE	14:49	13.0	14.5	15.0	15.0	13.0	9.5	8.0	6.0	16	5.3	16.4	32.3	18.7	10.3
Total													282.7	488.43	57.9	609.1	191.2
Mean				13.5	12.0	12.6	12.5	10.8	7.8	6.5	5.3	18	1981-2010 Normal for Radiation				
Extreme	67.1	SSW	22:56	1971- 2000 Normal for Soil Temperatures									256.9	487.6	52.7	603.5	221.5
Date	21				10.3	10.8	11.3	9.3	6.4	4.8	3.4		No. of Bright Sunshine days = 30				

Note: Red numbers indicate manual calculation

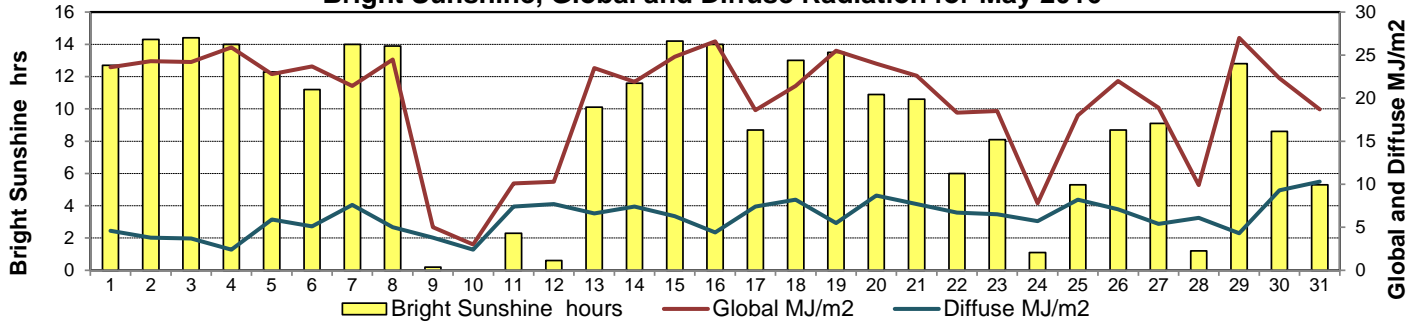
**SRC proudly recognizes the following CRS supporters:**



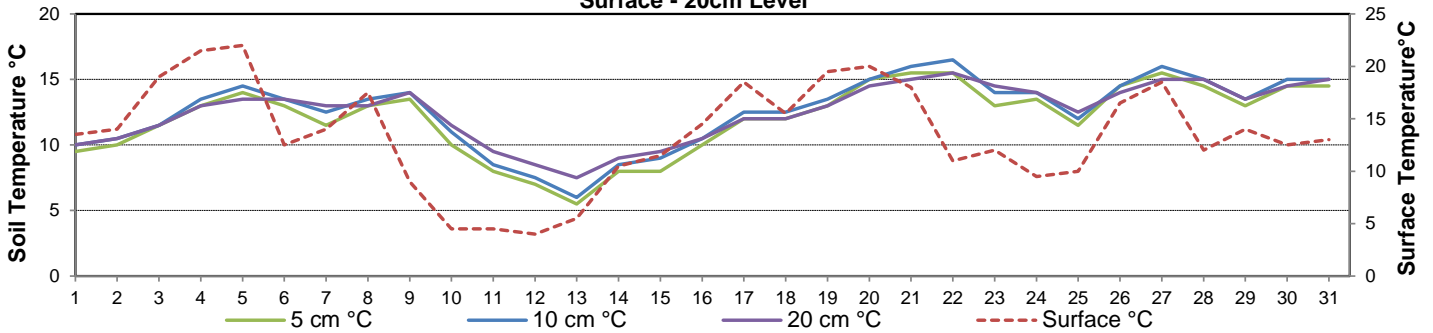
**Wind Speed for May 2016**



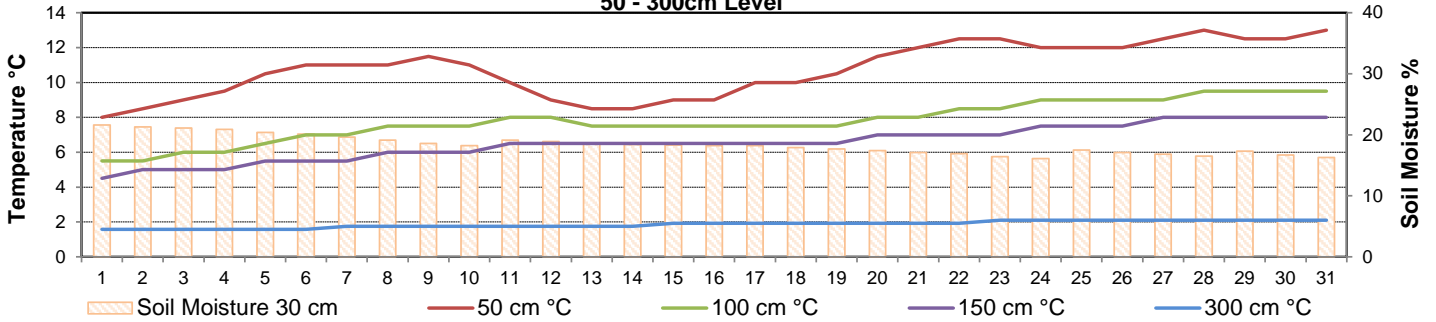
**Bright Sunshine, Global and Diffuse Radiation for May 2016**



**Soil Temperatures for May 2016  
Surface - 20cm Level**



**Soil Temperatures for May 2016  
50 - 300cm Level**





# SRC CLIMATE REFERENCE STATION DAILY DATA REPORT

## SASKATOON STATION 4057180

52°09' N 106°36' W 497 m asl Estab. 1963

Preliminary **MAY** 2016

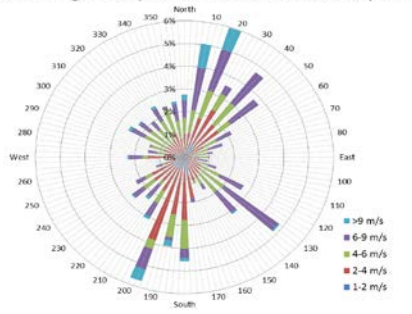
### Extreme Records for May

Max/Min Temperature °C			Precipitation - Monthly mm				Wind Monthly km/h				CRS Bright Sunshine - Monthly						
S'toon Area	Date	Site	S'toon CRS	Date	S'toon Area	Date	Site	S'toon CRS	Date	S'toon Airport	Date	S'toon CRS**	Date	Hours	Year	No. of Days	Year
37.2	27/1936	SE	35.0	30/1988	178.0	1977	SWT	145.3	1977	132	17 <sup>SW</sup>	108	1991	389.3	1980	31	1966*
-12.8	06/1907	SE	-10.0	02/1967	0.0	02, 02, 1988	SWT, K, SC	0.2	2002					153.0	1996	24	2006

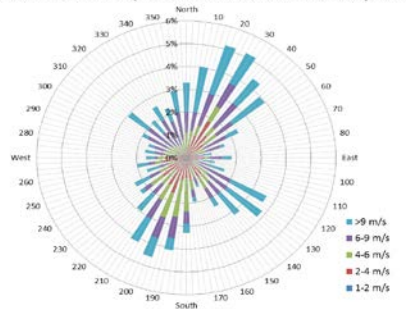
\*\*1975 forward \* more than one year

Notable Events for CRS Saskatoon - May						Saskatoon Area Stations			Glossary		
Element	Type	Day	New Record	Old Record	Year	SM	NWMP	c. 1892-1901	T	Trace of precipitation	
Temperature	Highest Maximum Daily	3	30.0	28.0	1985	SE	Eby	1901-1941	Normal	30 year average beginning with the decade	
		4	32.9	26.5	1992	US	Univ. of Sask.	1915-1964			
		8	31.3	28.9	1976	S	Saskatoon	1941-1942	SOG	Depth of snow-on-the-ground in cm	
	Lowest Maximum Daily	12	5.9	6.0	1983	SA	Saskatoon A	1942 -	na	not available	
		Highest Minimum Daily	4	12.6	11.1	1977	NRC	Nat. Res. Council	1952-1966	<b>Degree-days</b>	
			5	11.8	11.4	2001	SRC	Sask. Res. Council	1963-	Tm	Mean Temperature
	Highest Mean Daily	8	12.4	10.5	1985	SWT	S'toon Water Treatment Plant	1974 -	Growing	(Tm-5°C); if Tm ≤ 5°C then GDD = 0	
		4	22.8	18.4	1977	SC	S'toon Central Ave	1974-1989	Heating	(18°C-Tm); if Tm ≤ 18°C then HDD = 0	
		5	20.8	19.5	1992	S1	Saskatoon 1	1976-1978	Cooling	(Tm-18°C); if Tm ≥ 18°C then CDD = 0	
	Highest spring average minimum	8	21.9	18.4	1977	S2	Saskatoon 2	1977-1990	Extreme Cooling	(Tm-24°C); if Tm ≥ 24°C then CDD = 0	
			0.8	0.2	1993	K	S'toon Kernen Farm	1993-2004	Spring maintenance May 17, 2016 (dessicant replacement in radiation instrumrnts, empty Geonor bucket, calibrate tipping bucket)		
			6.6	6.2	1977	KCS	S'toon Kernen Farm CS	1996-			
					RCS	Environment Canada	2008-				
						SF	Sutherland Forestry	1943-1970			

10 minute Average Wind Speed and Direction Saskatoon May 2016



1/2 hr Maximum Wind Speed and Direction Saskatoon May 2016



**SRC proudly recognizes the following CRS supporters:**



Agriculture and Agri-Food Canada  
Agriculture et Agroalimentaire Canada

