



SRC CLIMATE REFERENCE STATION DAILY DATA REPORT



SASKATOON STATION 4057180

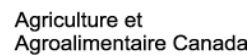
52°09' N 106°36' W 497 m asl Estab. 1963

Preliminary **MARCH 2015**

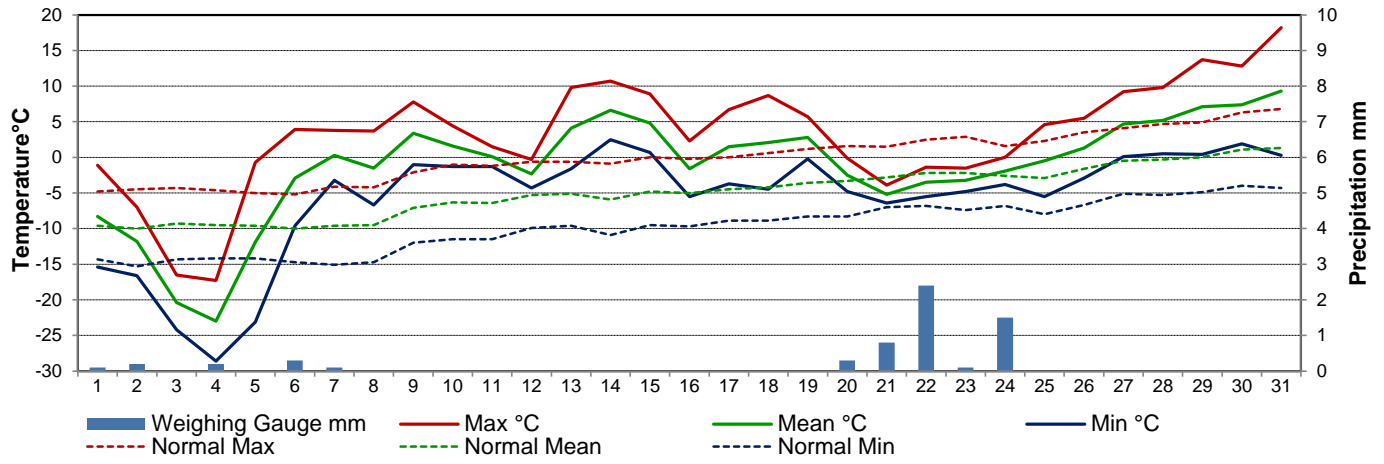
Day	Temperature						Degree-days			Precipitation			Relative Humidity		Station Pressure (sea level)	
	Max	Normal Max	Min	Normal Min	Mean	Normal Mean	Growing	Heating	Cooling	Weighing Gauge	Notes	Snow-on-Ground 0900h	Max ½ hr Avg	Min ½ hr Avg	Max ½ hr Avg	Min ½ hr Avg
	°C	1981-2010	°C	1981-2010	°C	1981-2010	5°C base	18°C base	18°C base	mm		cm	%	%	mbar	mbar
1	-1.1	-4.8	-15.4	-14.3	-8.3	-9.6	0.0	26.3	0.0	0.1	lite snow	13	92	61	1023	1016
2	-7.0	-4.5	-16.6	-15.3	-11.8	-10.0	0.0	29.8	0.0	0.2	lite snow	14	85	64	1018	1005
3	-16.5	-4.3	-24.2	-14.3	-20.4	-9.3	0.0	38.4	0.0	0.0		16	78	53	1022	1015
4	-17.3	-4.6	-28.6	-14.2	-23.0	-9.5	0.0	41.0	0.0	0.2	manual SOG 15	16	75	51	1025	1017
5	-0.7	-5.0	-23.1	-14.2	-11.9	-9.6	0.0	29.9	0.0	0.0		16	80	56	1016	1012
6	3.9	-5.2	-9.6	-14.7	-2.9	-10.0	0.0	20.9	0.0	0.3	snow / freezing rain	16	91	77	1018	1009
7	3.8	-4.1	-3.2	-15.1	0.3	-9.6	0.0	17.7	0.0	0.1		14	95	66	1018	1014
8	3.7	-4.2	-6.7	-14.7	-1.5	-9.5	0.0	19.5	0.0	0.0		14	88	61	1015	1006
9	7.8	-2.1	-1.0	-12.0	3.4	-7.1	0.0	14.6	0.0	0.0		14	87	60	1006	1001
10	4.4	-1.0	-1.3	-11.5	1.6	-6.3	0.0	16.4	0.0	0.0		11	90	69	1016	1006
11	1.5	-1.2	-1.3	-11.5	0.1	-6.4	0.0	17.9	0.0	0.0	discontinuous snow pack	10	90	66	1016	1010
12	-0.3	-0.6	-4.3	-9.9	-2.3	-5.3	0.0	20.3	0.0	0.0		10	98	91	1020	1011
13	9.8	-0.6	-1.6	-9.6	4.1	-5.1	0.0	13.9	0.0	0.0		10	99	57	1022	1016
14	10.7	-0.9	2.5	-10.9	6.6	-5.9	1.6	11.4	0.0	0.0		5	84	56	1016	992
15	8.9	0.0	0.7	-9.5	4.8	-4.8	0.0	13.2	0.0	0.0		0	74	51	1015	994
16	2.3	-0.2	-5.5	-9.7	-1.6	-5.0	0.0	19.6	0.0	0.0	no snow pack	0	80	35	1030	1016
17	6.7	0.0	-3.7	-8.9	1.5	-4.5	0.0	16.5	0.0	0.0		0	85	35	1030	1020
18	8.7	0.6	-4.5	-8.9	2.1	-4.2	0.0	15.9	0.0	0.0		0	94	35	1020	1013
19	5.7	1.2	-0.2	-8.3	2.8	-3.6	0.0	15.2	0.0	0.0		0	92	70	1013	1011
20	-0.1	1.6	-4.8	-8.3	-2.5	-3.3	0.0	20.5	0.0	0.3	lite snow	1	95	49	1022	1013
21	-3.9	1.5	-6.4	-7.0	-5.2	-2.8	0.0	23.2	0.0	0.8		1	89	56	1022	1017
22	-1.4	2.5	-5.5	-6.8	-3.5	-2.2	0.0	21.5	0.0	2.4	snow / freezing rain	5	97	87	1018	1012
23	-1.5	2.9	-4.8	-7.4	-3.2	-2.2	0.0	21.2	0.0	0.1		6	98	79	1018	1013
24	0.0	1.6	-3.8	-6.8	-1.9	-2.6	0.0	19.9	0.0	1.5	lite snow	6	97	74	1017	1011
25	4.6	2.3	-5.5	-8.0	-0.5	-2.9	0.0	18.5	0.0	0.0		5	91	51	1021	1017
26	5.5	3.5	-2.9	-6.7	1.3	-1.6	0.0	16.7	0.0	0.0	no snow pack	0	90	59	1020	1013
27	9.2	4.1	0.1	-5.1	4.7	-0.5	0.0	13.3	0.0	0.0		0	98	70	1013	1009
28	9.8	4.7	0.5	-5.3	5.2	-0.3	0.2	12.8	0.0	0.0		0	98	68	1010	996
29	13.7	4.9	0.4	-4.9	7.1	0.0	2.1	10.9	0.0	0.0		0	92	38	1013	1006
30	12.8	6.3	1.9	-4.0	7.4	1.1	2.4	10.6	0.0	0.0		0	87	42	1012	1006
31	18.2	6.8	0.3	-4.3	9.3	1.3	4.3	8.7	0.0	0.0		0	85	39	1011	994
Total							10.6	596.2	0.0	6.0			Extreme / Date	Extreme / Date	Extreme / Date	Extreme / Date
Avg	3.3	0.0	-5.7	-9.7	-1.2	-4.9	1981-2010 Normal			13.8	Normal					
Extreme Date	18.2		-28.6				3.0	708.8	0.0	32.9	Cumulative		99	35	1030	992
Date	31		4							38.6	Cumulative No		13	16	16	14

Note: Red numbers indicate manual calculation; Red cell indicate data not available

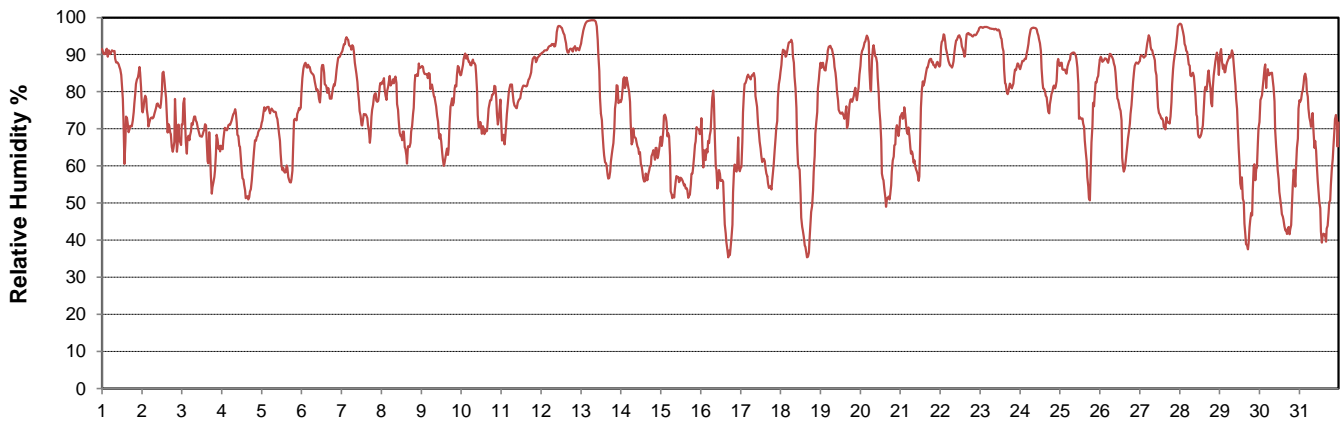
SRC proudly recognizes the following CRS supporters:



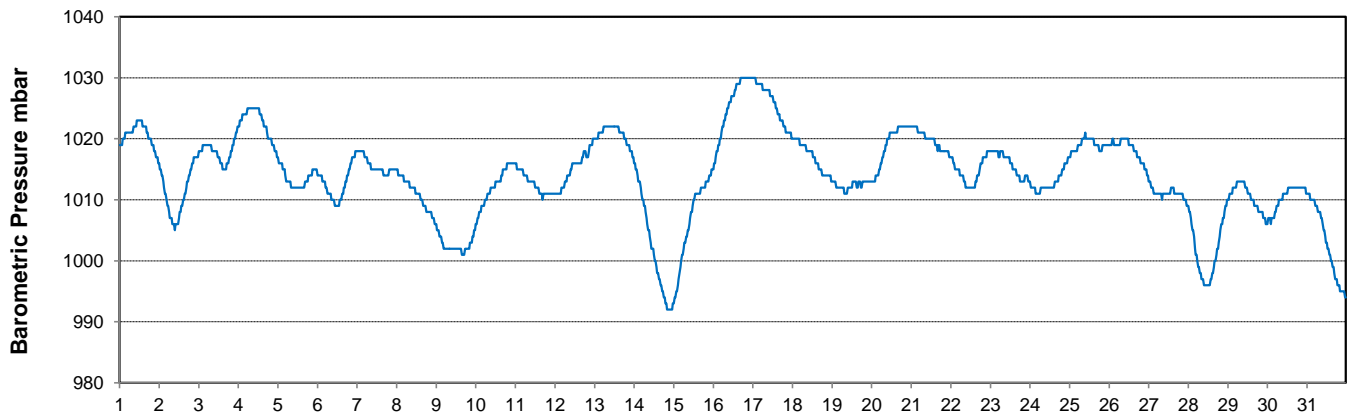
Temperature and Precipitation for March 2015



Relative Humidity for March 2015



Barometric Pressure Corrected to Sea Level for March 2015





SRC CLIMATE REFERENCE STATION DAILY DATA REPORT



SASKATOON STATION 4057180

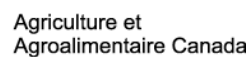
52°09' N 106°36' W 497 m asl Estab. 1963

Preliminary MARCH 2015

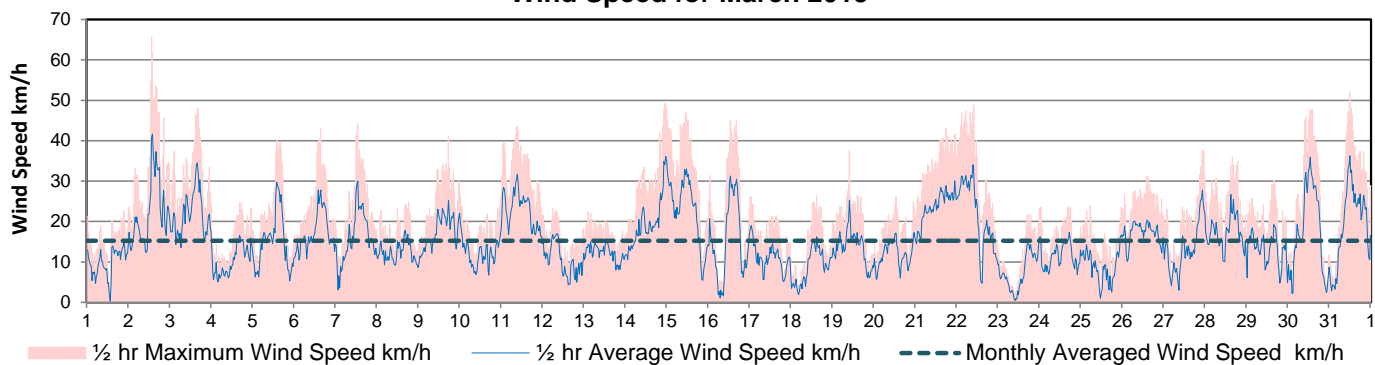
Day	Wind Gust			Soil Temperatures at 0900hrs								Soil Moisture 30 cm	Radiation				
	Max	Direction	Time	Surface	5 cm	10 cm	20 cm	50 cm	100 cm	150 cm	300 cm		0900hrs	Bright Sunshine	Possible	% Possible	Global
	km/h			°C	°C	°C	°C	°C	°C	°C	°C	%	hours	hours		MJ/m ²	MJ/m ²
1	23.2	S	23:57	-12.0	-3.5	-3.0	-3.0	-1.5	0.5	2.0	4.5	9	8.8	10.9	80.8	11.5	3.8
2	65.8	NNW	13:26	-12.0	-3.5	-3.0	-2.5	-1.5	0.5	2.0	4.5	9	4.6	11.0	42.0	9.1	6.4
3	47.9	NW	15:53	-19.5	-3.0	-3.0	-2.5	-1.5	0.5	2.0	4.5	8.9	9.1	11.0	82.6	11.1	5.6
4	24.8	WSW	16:20	-26.0	-3.5	-3.0	-2.5	-1.5	0.5	2.0	4.0	8.8	10.6	11.1	95.6	13.5	2.2
5	40.3	WNW	13:43	-17.5	-4.0	-3.5	-3.0	-1.5	0.5	2.0	4.0	8.8	10.3	11.2	92.3	12.3	2.5
6	42.9	NW	15:13	-5.0	-4.0	-3.5	-3.0	-1.5	0.5	2.0	4.0	9	4.7	11.2	41.9	8.1	3.9
7	44.2	NW	12:33	-2.0	-3.0	-2.5	-2.5	-1.5	0.5	2.0	4.0	9.6	8.2	11.3	72.6	11.7	3.1
8	24.8	WSW	18:07	-7.0	-2.0	-2.0	-2.0	-1.5	0.5	2.0	4.0	10.2	10.4	11.4	91.5	13.4	2.0
9	41.0	W	17:19	-0.5	-1.5	-1.5	-1.5	-1.0	0.5	2.0	4.0	10.7	6.9	11.4	60.4	10.9	3.9
10	26.5	WNW	0:06	-1.0	-0.5	-0.5	-1.0	-1.0	0.5	2.0	4.0	11.2	7.8	11.5	67.8	11.7	4.5
11	43.7	SE	9:12	-1.0	-0.5	-0.5	-1.0	-1.0	0.5	2.0	4.0	11.4	2.7	11.6	23.4	7.9	6.0
12	23.3	NNE	2:18	-3.5	-0.5	-0.5	-0.5	-0.5	0.5	1.5	4.0	11.6	0.1	11.6	0.9	4.6	3.8
13	22.4	WSW	5:34	-1.0	0.0	0.0	-0.5	-0.5	0.5	1.5	4.0	11.7	10.4	11.7	88.9	13.3	3.2
14	49.2	WSW	22:51	4.0	0.0	0.0	-0.5	-0.5	0.5	1.5	4.0	12.3	1.7	11.8	14.4	7.6	5.8
15	47.2	WNW	10:40	3.5	0.0	0.0	-0.5	-0.5	0.5	1.5	4.0	12.9	9.8	11.8	82.8	13.2	4.2
16	45.0	NW	16:08	-3.5	0.0	0.0	-0.5	-0.5	0.5	1.5	4.0	12.5	11.2	11.9	94.1	15.3	1.8
17	26.2	SW	0:06	-1.5	0.0	0.0	-0.5	-0.5	0.5	1.5	4.0	12.1	11.4	12.0	95.2	15.0	2.6
18	26.4	S	14:40	-1.5	-0.5	0.0	-0.5	-0.5	0.5	1.5	4.0	12.4	11.4	12.0	94.7	16.8	2.1
19	37.5	WNW	9:46	1.0	0.0	0.0	-0.5	-0.5	0.5	1.5	4.0	12.9	9.5	12.1	78.4	13.2	5.2
20	26.1	ENE	12:58	-4.5	0.0	0.0	0.0	0.0	0.5	1.5	4.0	13	9.4	12.2	77.2	15.2	2.5
21	43.0	E	17:49	-5.5	0.0	0.0	0.0	0.0	0.5	1.5	3.5	12.2	0.0	12.2	0.0	5.2	4.1
22	48.8	SE	9:42	-5.0	0.0	0.0	0.0	0.0	0.5	1.5	3.5	12	0.0	12.3	0.0	3.9	3.1
23	23.3	E	23:49	-4.5	-0.5	0.0	0.0	0.0	1.0	1.5	3.5	12	0.0	12.4	0.0	5.4	4.3
24	23.7	NNW	17:31	-3.0	-0.5	0.0	0.0	0.0	1.0	1.5	3.5	12.1	1.4	12.4	11.3	9.5	7.2
25	24.0	NW	5:28	-4.5	0.0	0.0	0.0	0.0	1.0	1.5	3.5	12.2	8.7	12.5	69.5	14.9	5.4
26	31.2	SSE	14:30	-2.0	0.0	0.0	0.0	0.0	1.0	1.5	3.5	12.5	6.2	12.6	49.3	11.7	7.7
27	37.8	SE	22:47	3.0	0.0	0.0	0.0	0.0	1.0	1.5	3.5	13.3	8.3	12.7	65.6	14.9	4.0
28	35.9	N	15:52	6.0	0.0	0.0	0.0	0.0	1.0	1.5	3.5	14.3	2.7	12.7	21.2	7.5	5.1
29	30.2	SW	15:53	3.0	0.0	0.0	0.0	0.0	1.0	1.5	3.5	14.6	10.9	12.8	85.3	17.3	2.4
30	47.8	WNW	14:10	5.5	0.0	0.0	0.0	0.0	1.0	2.0	3.5	16.1	12.3	12.9	95.7	18.5	1.6
31	52.0	SE	11:56	6.0	0.5	0.5	0.5	0.0	1.0	2.0	3.5	16.9	11.3	12.9	87.5	17.2	2.8
Total													220.8	368.98	59.8	361.4	122.8
Mean				-3.6	-1.0	-0.8	-0.9	-0.6	0.6	1.7	3.9	11.8	1981-2010 Normal for Radiation				
Extreme	65.8	NNW	13:26	1971-2000 Normal for Soil Temperatures									182.0	369.4	49.3	371.9	162.6
Date	2				-3.1	-2.8	-2.4	-1.5	-0.4	0.6	2.7		No. of Bright Sunshine days = 28				

Note: Red numbers indicate manual calculation

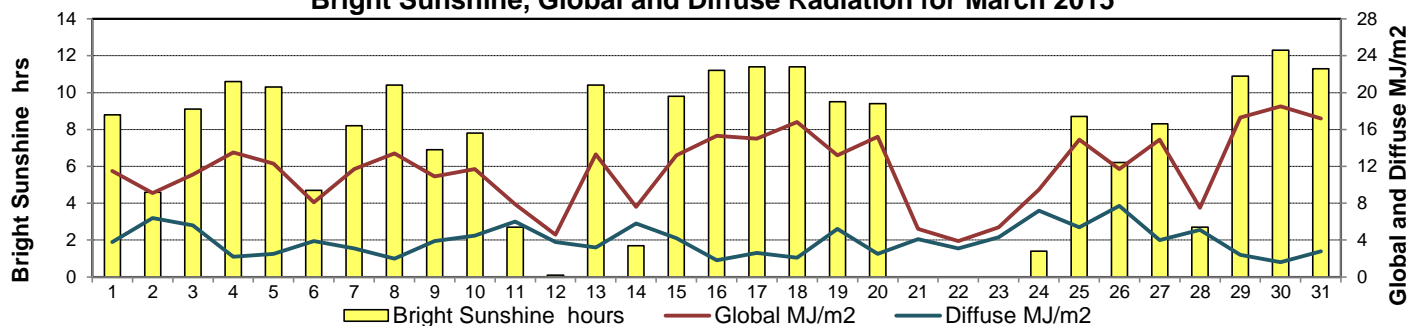
SRC proudly recognizes the following CRS supporters:



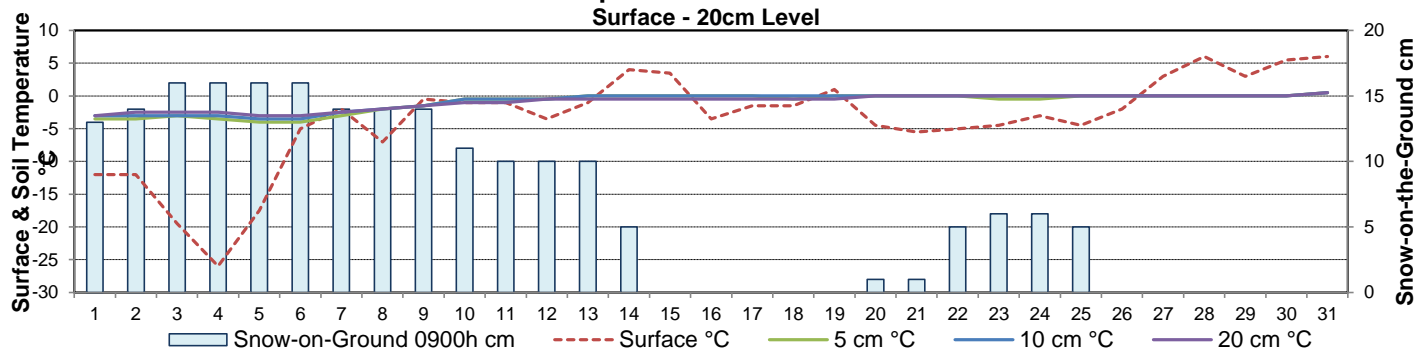
Wind Speed for March 2015



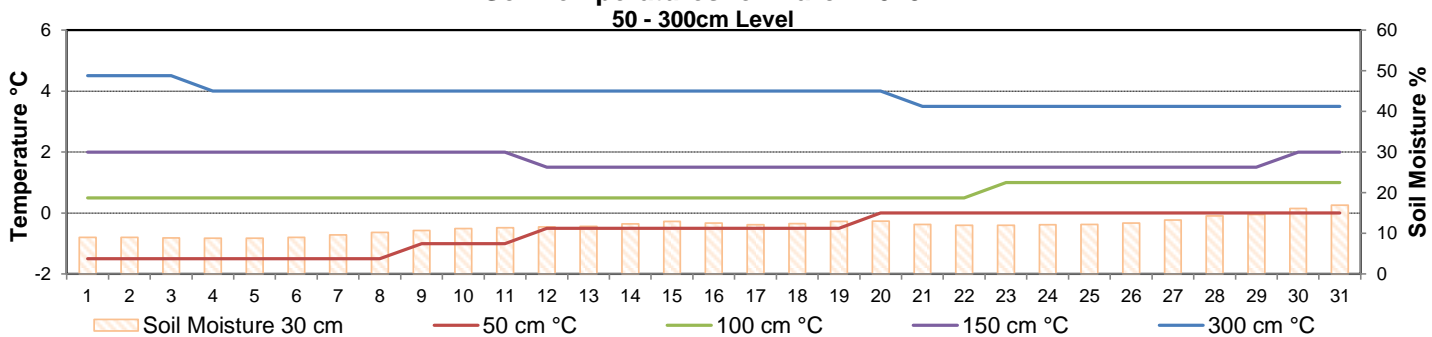
Bright Sunshine, Global and Diffuse Radiation for March 2015



Soil Temperatures for March 2015



Soil Temperatures for March 2015





SRC CLIMATE REFERENCE STATION DAILY DATA REPORT



SASKATOON STATION 4057180

52°09' N 106°36' W 497 m asl Estab. 1963

Preliminary **MARCH** 2015

Extreme Records for March

Max/Min Temperature °C			Precipitation - Monthly mm				Wind Monthly km/h				CRS Bright Sunshine - Monthly						
S'toon Area	Date	Site	S'toon CRS	Date	S'toon Area	Date	Site	S'toon CRS	Date	S'toon Airport	Date	S'toon CRS**	Date	Hours	Year	No. of Days	Year
22.8	23/1910	SE	20.0	23/1993	59.0	1927	SE	57.1	1967	93 ^W	18/1959	89 ^W	08/1977	248.7	2013	31	1996*
-43.3	14/1897	SM	-38.9	02/1972	0.0	1915*	SE*	0.8	2010					102.8	1983	21	1983*

**1975 forward * more than one

Notable Events for CRS Saskatoon - March						Saskatoon Area Stations			Glossary		
Element	Type	Day	New Record	Old Record	Year	SM	NWMP	c. 1892-1901	T	Trace of precipitation	
Temperature	Highest Maximum Daily	14	10.7	8.0	1981	SE	Eby	1901-1941	Normal	30 year average beginning with the decade	
	Highest Minimum Daily	14	2.5	-0.5	1986	US	Univ. of Sask.	1915-1964	SOG	Depth of snow-on-the-ground in cm	
	Highest Mean Daily	14	6.6	2.8	1981	S	Saskatoon	1941-1942	na	not available	
			31	9.3	8.0	2004	SA	Saskatoon A	1942 -	Degree-days	
	Number of Frost-Free Days			7	6	2012	NRC	Nat. Res. Council	1952-1966	Tm	Mean Temperature
						SRC	Sask. Res. Council	1963-	Growing	(Tm-5°C); if Tm ≤ 5°C then GDD = 0	
						SWT	S'toon Water Treatment Plant	1974 -	Heating	(18°C-Tm); if Tm ≤ 18°C then HDD = 0	
						SC	S'toon Central Ave	1974-1989	Cooling	(Tm-18°C); if Tm ≥ 18°C then CDD = 0	
						S1	Saskatoon 1	1976-1978	Extreme Cooling	(Tm-24°C); if Tm ≥ 24°C then CDD = 0	
						S2	Saskatoon 2	1977-1990			
						K	S'toon Kernen Farm	1993-2004			
						KCS	S'toon Kernen Farm CS	1996-			
						RCS	Environment Canada	2008-			
						SF	Sutherland Forestry	1943-1970			

Summary

SRC proudly recognizes the following CRS supporters:



Agriculture and Agri-Food Canada

Agriculture et Agroalimentaire Canada



