



SRC CLIMATE REFERENCE STATION DAILY DATA REPORT

SASKATOON STATION 4057180

52°09' N 106°36' W 497 m asl Estab. 1963

Preliminary JANUARY 2017

Day	Temperature						Degree-days			Precipitation			Relative Humidity		Station Pressure (sea level)	
	Max	Normal Max	Min	Normal Min	Mean	Normal Mean	Growing	Heating	Cooling	Weighing Gauge	Notes	Snow-on-Ground 0900h	Max ½ hr Avg	Min ½ hr Avg	Max ½ hr Avg	Min ½ hr Avg
	°C	1981-2010	°C	1981-2010	°C	1981-2010	5°C base	18°C base	18°C base	mm		cm	%	%	mbar	mbar
1	-9.9	-10.8	-23.1	-21.9	-16.5	-16.4	0.0	34.5	0.0	0.0		11	91	71	1022	1009
2	-16.8	-9.6	-29.0	-19.3	-22.9	-14.5	0.0	40.9	0.0	0.2	light snow	10	82	76	1030	1023
3	-18.7	-10.2	-30.5	-20.2	-24.6	-15.2	0.0	42.6	0.0	0.4	light snow	10	83	73	1031	1022
4	-15.6	-10.7	-20.4	-20.5	-18.0	-15.6	0.0	36.0	0.0	0.1	manual snow depth 11 cm	11	83	70	1022	1019
5	-12.7	-11.1	-19.5	-21.1	-16.1	-16.1	0.0	34.1	0.0	0.1	light snow	11	88	76	1022	1016
6	-15.3	-10.2	-23.6	-19.1	-19.5	-14.7	0.0	37.5	0.0	0.0		10	87	76	1029	1018
7	-15.3	-10.4	-27.6	-18.9	-21.5	-14.7	0.0	39.5	0.0	0.1	light snow	10	86	72	1030	1021
8	-16.4	-11.2	-28.3	-19.7	-22.4	-15.5	0.0	40.4	0.0	0.2	light snow	10	84	69	1025	1020
9	-18.1	-12.2	-25.6	-21.3	-21.9	-16.8	0.0	39.9	0.0	1.3	light snow	10	82	78	1020	1004
10	-18.5	-12.2	-27.6	-21.4	-23.1	-16.8	0.0	41.1	0.0	0.1	light snow	12	82	76	1009	1004
11	-8.6	-10.8	-30.7	-19.9	-19.7	-15.4	0.0	37.7	0.0	0.5	light snow	12	91	70	1009	993
12	-24.9	-9.7	-31.6	-19.6	-28.3	-14.7	0.0	46.3	0.0	0.0		11	71	54	1024	1010
13	-11.4	-9.7	-26.9	-20.3	-19.2	-15.0	0.0	37.2	0.0	0.0		11	79	65	1023	1017
14	-5.4	-10.3	-16.0	-20.7	-10.7	-15.5	0.0	28.7	0.0	0.0		11	81	60	1023	1013
15	-1.2	-8.1	-7.6	-18.6	-4.4	-13.4	0.0	22.4	0.0	0.0		11	85	66	1013	1009
16	-0.2	-8.7	-8.8	-18.2	-4.5	-13.5	0.0	22.5	0.0	0.0		11	86	61	1015	1005
17	4.7	-10.0	-4.6	-19.4	0.1	-14.7	0.0	17.9	0.0	0.0		11	84	61	1014	996
18	7.5	-8.3	-0.4	-19.2	3.6	-13.7	0.0	14.4	0.0	0.0	discontinuous snowpack	11	88	60	997	991
19	4.7	-9.9	-1.6	-20.1	1.6	-15.0	0.0	16.4	0.0	0.0	manual snow	9	91	77	994	991
20	3.2	-8.6	-2.1	-18.6	0.6	-13.6	0.0	17.4	0.0	0.0	depth 4 cm	9	95	81	993	992
21	-1.2	-9.2	-3.0	-19.1	-2.1	-14.2	0.0	20.1	0.0	0.8	light snow	9	97	90	1002	993
22	-2.5	-9.2	-8.5	-18.3	-5.5	-13.8	0.0	23.5	0.0	1.8	light snow	9	93	81	1009	1003
23	-8.4	-8.9	-11.0	-18.5	-9.7	-13.7	0.0	27.7	0.0	0.7	light snow	10	87	83	1011	1008
24	-10.6	-10.3	-14.8	-19.9	-12.7	-15.1	0.0	30.7	0.0	0.6	light snow	12	88	74	1017	1011
25	-8.6	-9.5	-16.0	-19.8	-12.3	-14.7	0.0	30.3	0.0	0.0	manual snow	12	89	69	1019	1017
26	-4.7	-8.4	-16.2	-20.1	-10.5	-14.2	0.0	28.5	0.0	0.1		11	91	74	1019	1015
27	2.5	-8.7	-6.8	-19.8	-2.2	-14.3	0.0	20.2	0.0	0.0		11	89	66	1017	1015
28	3.2	-10.3	-2.6	-19.8	0.3	-15.1	0.0	17.7	0.0	0.1	light rain	11	85	68	1017	1012
29	5.7	-9.8	-3.0	-20.6	1.4	-15.2	0.0	16.6	0.0	0.0		8	84	60	1012	1001
30	2.2	-7.3	-1.2	-18.2	0.5	-12.8	0.0	17.5	0.0	1.1	light rain / snow	9	92	73	1009	1001
31	-1.2	-8.6	-18.7	-17.8	-10.0	-13.2	0.0	28.0	0.0	0.3	light snow	9	80	57	1024	1010
Total							0.0	908.2	0.0	8.5			Extreme / Date	Extreme / Date	Extreme / Date	Extreme / Date
Avg	-6.9	-9.8	-15.7	-19.7	-11.3	-14.7	1981-2010 Normal			15.5	Normal					
Extreme Date	7.5		-31.6				0.0	1015.1	0.0	8.5	Cumulative		97	54	1031	991
Date	18		12							15.5	Cumulative Normal		21	12	3	18

Note: Red numbers indicate manual calculation; Red cell indicate data not available

SRC proudly recognizes the following CRS supporters:



Agriculture and Agri-Food Canada

Agriculture et Agroalimentaire Canada

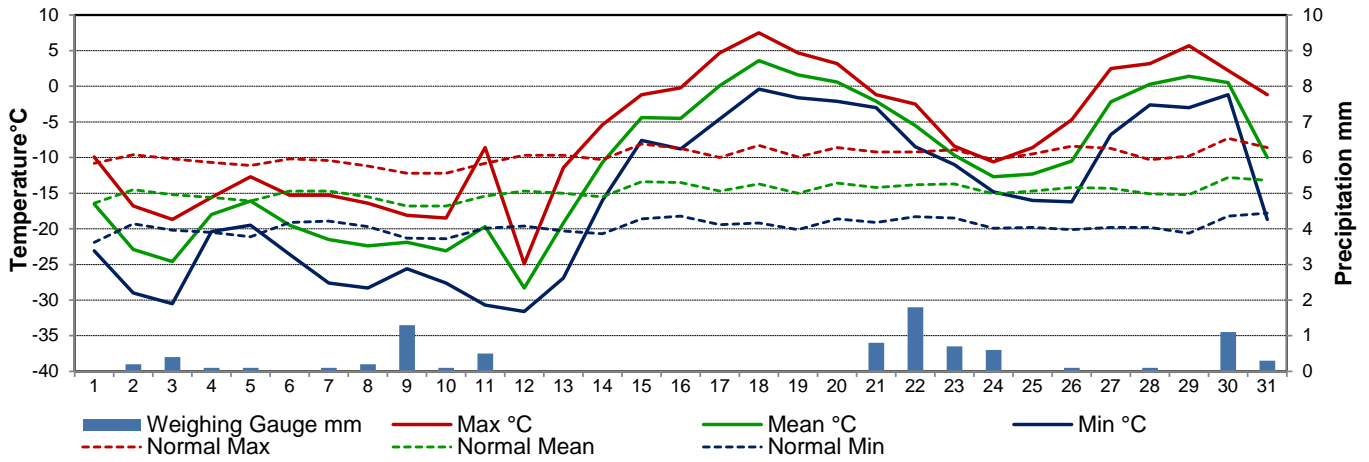


UNIVERSITY OF SASKATCHEWAN

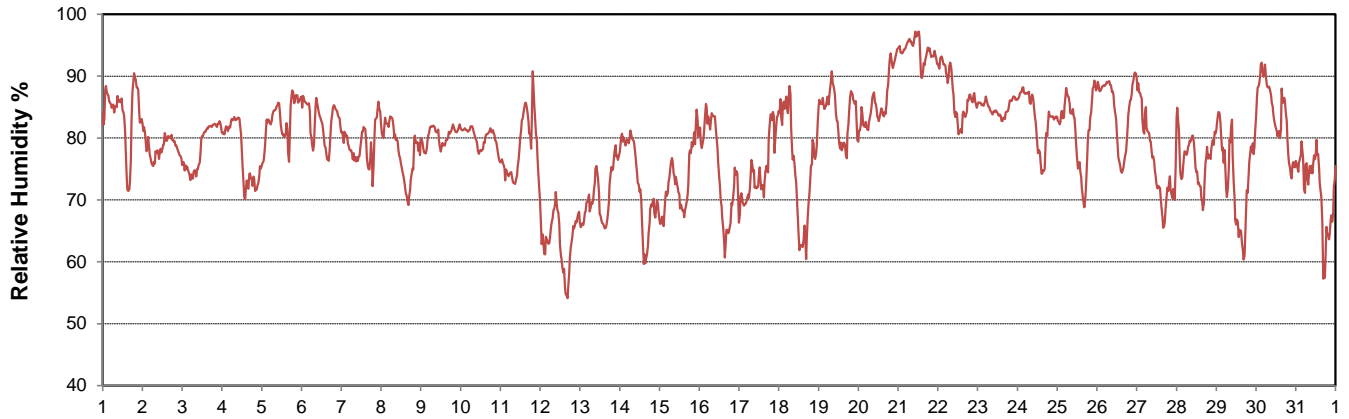


CAMPBELL SCIENTIFIC WHEN MEASUREMENTS MATTER

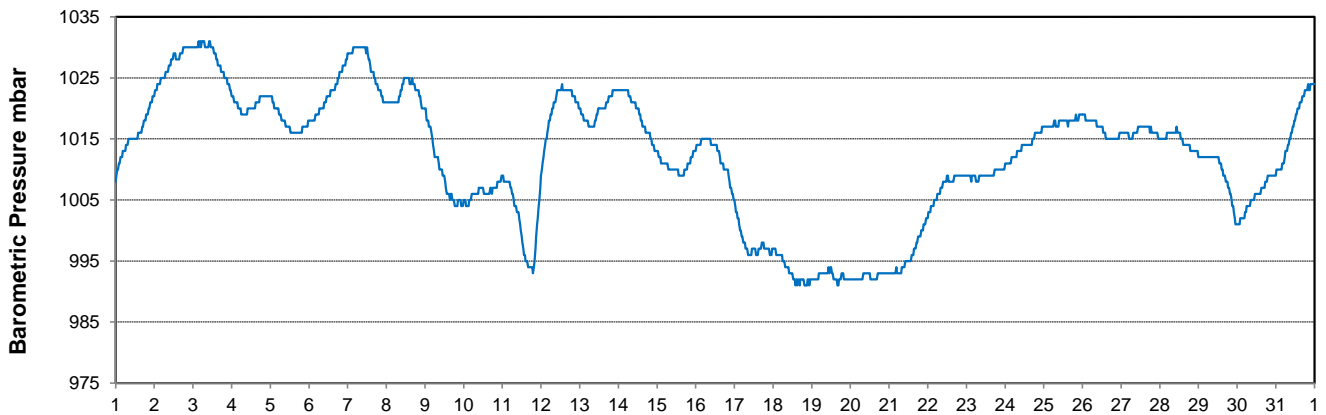
Temperature and Precipitation for January 2017



Relative Humidity for January 2017



Barometric Pressure Corrected to Sea Level for January 2017





SRC CLIMATE REFERENCE STATION DAILY DATA REPORT

SASKATOON STATION 4057180

52°09' N 106°36' W 497 m asl Estab. 1963

Preliminary **JANUARY 2017**

Day	Wind Gust			Soil Temperatures at 0900hrs								Soil Moisture 30 cm	Radiation				
	Max	Direction	Time	Surface	5 cm	10 cm	20 cm	50 cm	100 cm	150 cm	300 cm		0900hrs	Bright Sunshine	Possible	% Possible	Global
	km/h			°C	°C	°C	°C	°C	°C	°C	°C	%	hours	hours		MJ/m ²	MJ/m ²
1	23.9	NNW	16:33	-18.5	-4.5	-4.0	-3.5	-2.0	1.0	3.0	6.5	9	3.9	7.8	49.7	4.2	1.7
2	12.4	WNW	15:24	-27.0	-5.0	-4.5	-4.0	-2.0	1.0	3.0	6.5	9	6.3	7.9	80.2	4.7	1.0
3	24.1	WSW	23:30	-32.0	-6.0	-5.5	-4.5	-2.0	1.0	3.0	6.5	9	1.6	7.9	20.3	2.2	1.4
4	35.9	N	13:07	-17.5	-6.0	-5.5	-4.5	-2.5	1.0	3.0	6.5	9	0.1	7.9	1.3	2.6	2.2
5	21.7	NW	2:09	-16.0	-5.5	-5.0	-4.5	-2.5	1.0	3.0	6.5	9	5.5	7.9	69.3	3.4	1.5
6	26.5	WNW	13:41	-24.0	-5.5	-5.0	-4.5	-2.5	1.0	3.0	6.0	9	7.4	8.0	93.0	6.2	1.1
7	21.1	SE	14:39	-29.5	-6.5	-5.5	-5.0	-2.5	1.0	2.5	6.0	9	4.7	8.0	58.8	4.2	1.5
8	33.3	NNE	8:40	-18.5	-6.0	-5.5	-5.0	-2.5	1.0	2.5	6.0	9	2.1	8.0	26.2	3.6	2.2
9	21.2	NE	8:43	-21.0	-6.5	-6.0	-5.0	-2.5	1.0	2.5	6.0	9	0.0	8.1	0.0	2.1	1.7
10	24.2	WNW	1:06	-26.0	-6.0	-5.5	-5.0	-2.5	1.0	2.5	6.0	9	4.3	8.1	53.2	4.5	1.8
11	77.3	NNW	19:47	-31.0	-6.5	-6.0	-5.0	-2.5	0.5	2.5	6.0	9	1.2	8.1	14.8	3.0	2.0
12	55.7	NW	0:05	-29.5	-6.5	-6.0	-5.0	-2.5	0.5	2.5	6.0	9	7.7	8.2	94.2	5.0	1.1
13	26.5	SSE	0:26	-23.0	-7.0	-6.5	-5.5	-3.0	0.5	2.5	6.0	9	7.6	8.2	92.7	4.6	0.8
14	35.1	SW	21:12	-15.5	-6.5	-6.0	-5.5	-3.0	0.5	2.5	5.5	9	6.0	8.2	72.8	4.3	1.5
15	28.0	SW	0:23	-8.5	-5.5	-5.5	-5.0	-3.0	0.5	2.5	5.5	9	1.5	8.3	18.1	3.3	2.4
16	35.3	SW	15:02	-10.0	-5.0	-4.5	-4.5	-2.5	0.5	2.0	5.5	9	5.6	8.3	67.2	4.3	2.0
17	28.0	S	3:20	-3.0	-4.5	-4.0	-4.0	-2.5	0.5	2.0	5.5	9	4.6	8.4	55.0	3.1	1.6
18	37.8	SW	16:28	2.0	-4.0	-3.5	-3.5	-2.5	0.5	2.0	5.5	9	5.1	8.4	60.6	3.9	2.1
19	21.0	SSW	9:34	0.0	-3.0	-3.0	-3.0	-2.0	0.5	2.0	5.5	10	0.0	8.5	0.0	1.3	1.1
20	19.5	S	2:51	0.0	-2.5	-2.0	-2.5	-2.0	0.5	2.0	5.5	11	0.0	8.5	0.0	2.6	2.1
21	26.2	NNE	6:32	-3.0	-2.0	-1.5	-2.0	-1.5	0.5	2.0	5.5	11	0.0	8.6	0.0	1.3	1.1
22	38.8	NNW	7:05	-4.5	-2.0	-1.5	-1.5	-1.5	0.5	2.0	5.0	11	0.0	8.6	0.0	2.5	2.1
23	24.2	NNW	2:21	-10.0	-2.0	-2.0	-1.5	-1.0	0.5	2.0	5.0	11	0.0	8.7	0.0	2.9	2.4
24	19.5	NNW	10:58	-13.5	-2.5	-2.0	-2.0	-1.0	0.5	2.0	5.0	10	5.7	8.7	65.4	4.6	2.2
25	19.8	W	20:22	-13.5	-2.5	-2.5	-2.0	-1.0	0.5	2.0	5.0	10	8.3	8.8	94.7	4.2	1.6
26	32.4	WSW	15:18	-13.0	-3.0	-2.5	-2.5	-1.0	0.5	2.0	5.0	10	7.6	8.8	86.3	5.5	1.5
27	42.8	WNW	13:51	-2.5	-3.0	-2.5	-2.5	-1.0	0.5	2.0	5.0	10	7.2	8.9	81.2	4.2	1.2
28	30.3	WNW	3:37	-3.0	-2.5	-2.0	-2.0	-1.0	0.5	2.0	5.0	10	2.6	8.9	29.1	4.0	2.7
29	28.7	WSW	15:39	-6.5	-2.0	-2.0	-2.0	-1.0	0.5	2.0	5.0	10	7.7	9.0	85.7	4.7	2.0
30	46.8	WNW	12:46	1.0	-1.5	-1.5	-1.5	-1.0	0.5	2.0	5.0	11	1.0	9.0	11.1	3.4	2.6
31	44.7	NNE	11:30	-10.0	-1.0	-1.0	-1.0	-1.0	0.5	2.0	5.0	11	4.2	9.1	46.2	4.6	2.3
Total													119.5	259.7	46.0	115.0	54.5
Mean				-13.8	-4.3	-3.9	-3.5	-2.0	0.7	2.3	5.6	9.5	1981-2010 Normal for Radiation				
Extreme	77.3	NNW	19:47	1971- 2000 Normal for Soil Temperatures									101.0	259.0	39.0	126.9	68.7
Date	11				-8.4	-8.0	-7.1	-3.5	-0.1	1.7	4.6		No. of Bright Sunshine days = 25				

Note: Red numbers indicate manual calculation

SRC proudly recognizes the following CRS supporters:

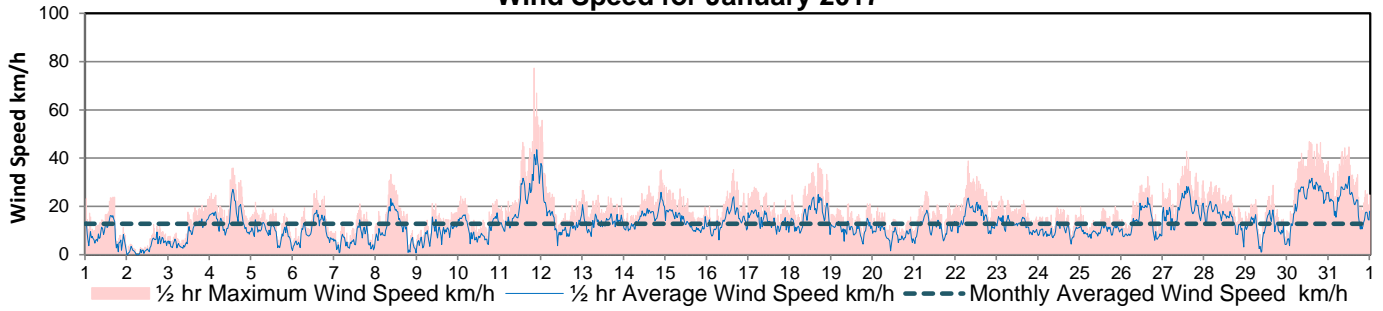


Agriculture and Agri-Food Canada

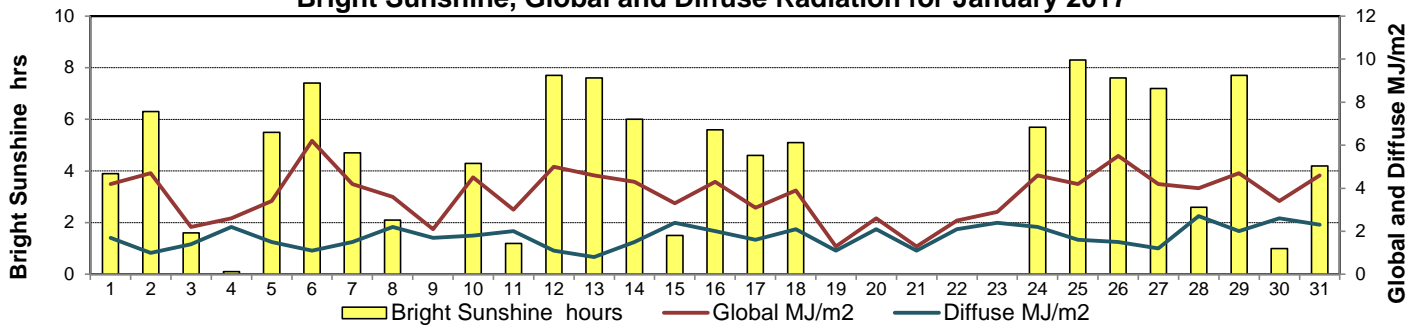
Agriculture et Agroalimentaire Canada



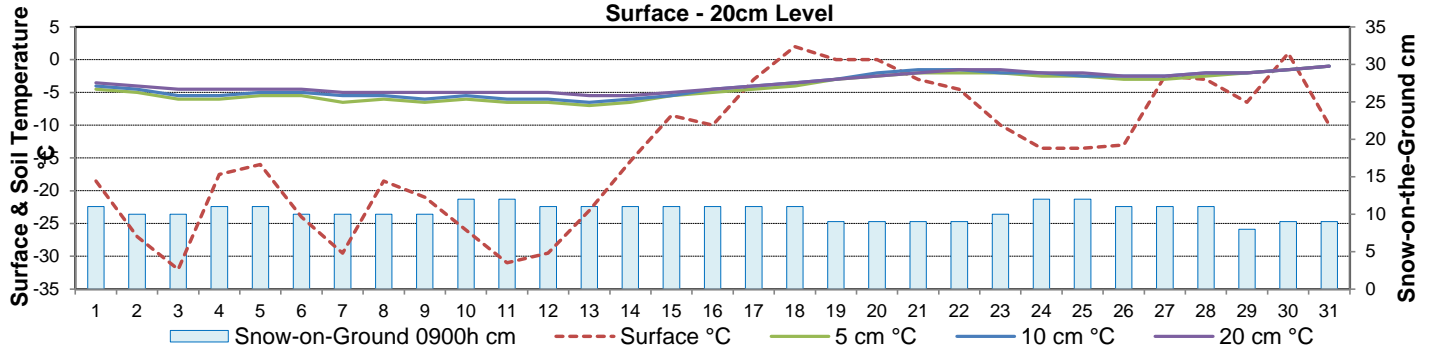
Wind Speed for January 2017



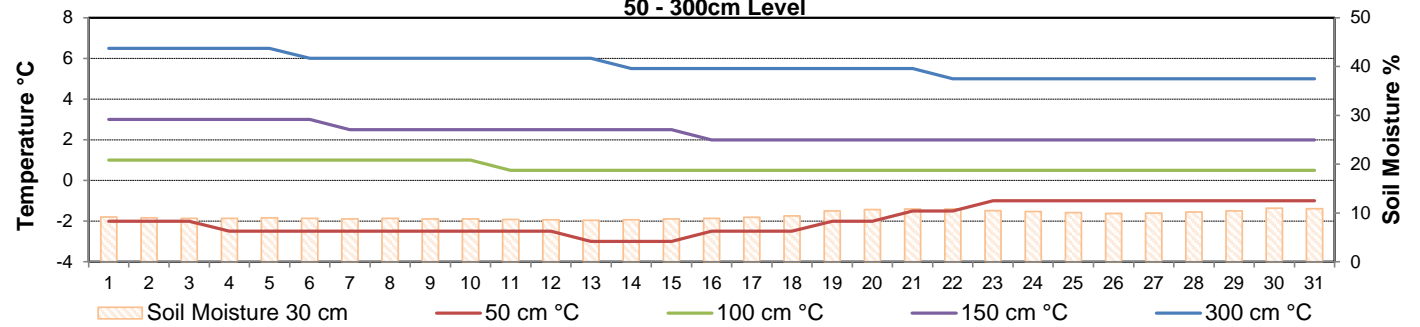
Bright Sunshine, Global and Diffuse Radiation for January 2017



**Soil Temperatures for January 2017
Surface - 20cm Level**



**Soil Temperatures for January 2017
50 - 300cm Level**





SRC CLIMATE REFERENCE STATION DAILY DATA REPORT

SASKATOON STATION 4057180

52°09' N 106°36' W 497 m asl Estab. 1963

Preliminary **JANUARY 2017**

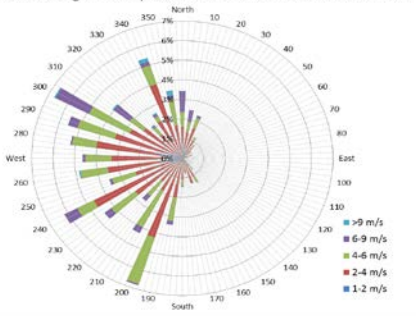
Extreme Records for January

Max/Min Temperature °C				Precipitation - Monthly mm				Wind Monthly km/h				CRS Bright Sunshine - Monthly			
S'toon Area	Date	Site	S'toon CRS Date	S'toon Area	Date	Site	S'toon CRS Date	S'toon Airport	Date	S'toon CRS**	Date	Hours	Year	No. of Days	Year
11.0	23/1980	SWT	8.1 15/2014	66.1	1911	SE	48.6 1969	111	11 ^W 1986	109	1986	146.9	1979	30	1993
-48.9	31/1893	SM	-43.9 *29/1969	0.0	2001, '89*'12	SWT SC SE	2.6 2001					45.5	2004	15	1995

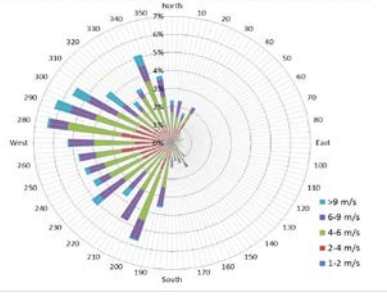
**1975 forward * more than one year

Notable Events for CRS Saskatoon - January						Saskatoon Area Stations			Glossary		
Element	Type	Day	New Record	Old Record	Year	SM	NWMP	c. 1892-1901	T	Trace of precipitation	
Temperature	Highest Maximum Daily	17	4.7	3.4	2014	SE	Eby	1901-1941	Normal	30 year average beginning with the decade	
		18	7.5	5.3	2009	US	Univ. of Sask.	1915-1964	SOG	Depth of snow-on-the-ground in cm	
		19	4.7	4.1	2014	S	Saskatoon	1941-1942	na	not available	
		29	5.7	4.5	1989	SA	Saskatoon A	1942 -	Degree-days		
	Highest Minimum Daily	18	-0.4	-1.5	2009	NRC	Nat. Res. Council	1952-1966	Tm	Mean Temperature	
		19	-1.6	-5.3	2015	SRC	Sask. Res. Council	1963-	Growing	(Tm-5°C); if Tm ≤ 5°C then GDD = 0	
		21	-3.0	-3.3	1968	SWT	S'toon Water Treatment Plant	1974 -	Heating	(18°C-Tm); if Tm ≤ 18°C then HDD = 0	
		28	-2.6	-5.5	1984	SC	S'toon Central Ave	1974-1989	Cooling	(Tm-18°C); if Tm ≥ 18°C then CDD = 0	
	Highest Average Daily	17	0.1	-0.3	2015	S1	Saskatoon 1	1976-1978	Extreme Cooling	(Tm-24°C); if Tm ≥ 24°C then CDD = 0	
		18	3.6	1.9	2009	S2	Saskatoon 2	1977-1990	equipment maintenance 9 Jan 2017 updated datalogger operating system installed 13 Jan 2017		
		19	1.6	-2.3	2015	K	S'toon Kernen Farm	1993-2004			
		28	0.3	-0.5	1984	KCS	S'toon Kernen Farm CS	1996-			
29	1.4	1.3	1989	RCS	Environment Canada	2008-					
Least No. of days ≤ -2°		28	29	1993	SF	Sutherland Forestry	1943-1970				

10 minute Average Wind Speed and Direction Saskatoon Jan 2017



1/2 hr Maximum Wind Speed and Direction Saskatoon Jan 2017



FYI, yes, these wind roses look a little odd but they are correct. They speak to the dominant weather patterns (and their tracks) Saskatoon had during January (Environment Canada personal communication 2 Feb 2017)

SRC proudly recognizes the following CRS supporters:



Agriculture and Agri-Food Canada

Agriculture et Agroalimentaire Canada

