



SRC CLIMATE REFERENCE STATION DAILY DATA REPORT

SASKATOON STATION 4057180

Saskatchewan 52°09' N 106°36' W 497 m asl Estab. 1963

Preliminary **AUGUST 2016**

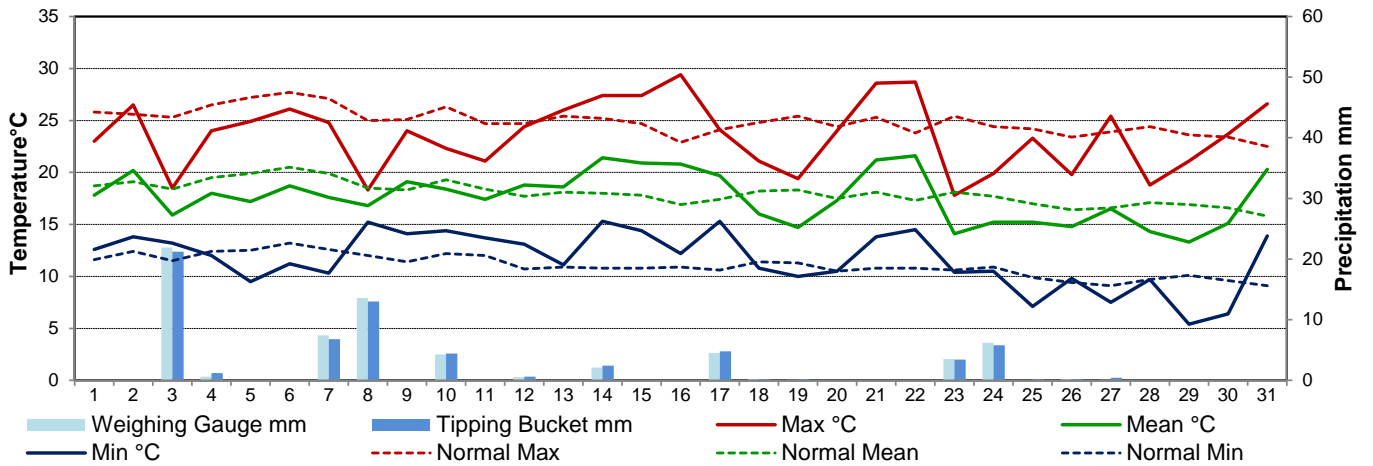
Day	Temperature						Degree-days			Precipitation			Relative Humidity		Station Pressure (sea level)	
	Max	Normal Max	Min	Normal Min	Mean	Normal Mean	Growing	Heating	Cooling	Weighing Gauge	Tipping Bucket	Notes	Max ½ hr Avg	Min ½ hr Avg	Max ½ hr Avg	Min ½ hr Avg
	°C	1981-2010	°C	1981-2010	°C	1981-2010	5°C base	18°C base	18°C base	mm	mm		%	%	mbar	mbar
1	23.0	25.8	12.6	11.6	17.8	18.7	12.8	0.2	0.0	0.0	0.0		90	46	1012	1008
2	26.5	25.6	13.8	12.4	20.2	19.1	15.2	0.0	2.2	0.0	0.0	0.0	87	36	1014	1012
3	18.5	25.3	13.2	11.5	15.9	18.4	10.9	2.1	0.0	21.9	21.2		92	80	1013	1008
4	24.0	26.5	12.0	12.4	18.0	19.5	13.0	0.0	0.0	0.6	1.2		92	44	1016	1010
5	24.9	27.2	9.5	12.5	17.2	19.9	12.2	0.8	0.0	0.0	0.0		95	38	1018	1016
6	26.1	27.7	11.2	13.2	18.7	20.5	13.7	0.0	0.7	0.0	0.0		93	40	1019	1017
7	24.8	27.1	10.3	12.6	17.6	19.9	12.6	0.4	0.0	7.4	6.8		94	52	1017	1007
8	18.3	25.0	15.2	12.0	16.8	18.5	11.8	1.2	0.0	13.6	13.0		94	89	1007	1003
9	24.0	25.1	14.1	11.4	19.1	18.3	14.1	0.0	1.1	0.0	0.0		95	54	1010	1007
10	22.3	26.3	14.4	12.2	18.4	19.3	13.4	0.0	0.4	4.3	4.4		93	65	1010	1006
11	21.1	24.7	13.7	12.0	17.4	18.4	12.4	0.6	0.0	0.0	0.0		93	65	1012	1006
12	24.4	24.7	13.1	10.7	18.8	17.7	13.8	0.0	0.8	0.5	0.6		95	54	1015	1011
13	26.0	25.4	11.1	10.9	18.6	18.1	13.6	0.0	0.6	0.0	0.0		94	35	1015	1013
14	27.4	25.2	15.3	10.8	21.4	18.0	16.4	0.0	3.4	2.1	2.4		87	36	1013	1011
15	27.4	24.7	14.4	10.8	20.9	17.8	15.9	0.0	2.9	0.0	0.0		89	35	1015	1012
16	29.4	22.9	12.2	10.9	20.8	16.9	15.8	0.0	2.8	0.0	0.0		94	33	1016	1013
17	24.1	24.1	15.3	10.6	19.7	17.4	14.7	0.0	1.7	4.5	4.8		91	33	1016	1013
18	21.1	24.8	10.8	11.4	16.0	18.2	11.0	2.0	0.0	0.2	0.2		88	43	1019	1016
19	19.4	25.4	10.0	11.3	14.7	18.3	9.7	3.3	0.0	0.1	0.2		93	46	1021	1016
20	24.0	24.4	10.5	10.5	17.3	17.5	12.3	0.7	0.0	0.0	0.0		87	36	1016	1008
21	28.6	25.3	13.8	10.8	21.2	18.1	16.2	0.0	3.2	0.0	0.0		84	32	1007	1002
22	28.7	23.8	14.5	10.8	21.6	17.3	16.6	0.0	3.6	0.0	0.0		83	29	1003	998
23	17.8	25.4	10.4	10.6	14.1	18.1	9.1	3.9	0.0	3.5	3.4		92	57	1011	1003
24	19.9	24.4	10.5	10.9	15.2	17.7	10.2	2.8	0.0	6.2	5.8		93	52	1019	1011
25	23.3	24.2	7.1	9.9	15.2	17.0	10.2	2.8	0.0	0.0	0.2		94	41	1019	1014
26	19.8	23.4	9.8	9.4	14.8	16.4	9.8	3.2	0.0	0.2	0.2		92	48	1014	1011
27	25.4	23.9	7.5	9.1	16.5	16.6	11.5	1.5	0.0	0.1	0.4		92	35	1010	1002
28	18.8	24.4	9.7	9.7	14.3	17.1	9.3	3.7	0.0	0.0	0.0		85	55	1021	1001
29	21.1	23.6	5.4	10.1	13.3	16.9	8.3	4.7	0.0	0.0	0.0		91	35	1025	1022
30	23.7	23.4	6.4	9.6	15.1	16.6	10.1	2.9	0.0	0.0	0.0		93	35	1024	1021
31	26.6	22.5	13.9	9.1	20.3	15.8	15.3	0.0	2.3	0.0	0.0		72	37	1022	1013
Total							391.9	36.8	25.7	65.2	64.8		Extreme / Date	Extreme / Date	Extreme / Date	Extreme / Date
Avg	23.6	24.9	11.7	11.0	17.6	18.0	1981-2010 Normal			46.5	Normal					
Extreme Date	29.4		5.4				402.8	50.0	49.8	276.0	Cumulative		95	29	1025	998
	16		29							273.0	Cumulative No		5	22	29	22

Note: Red numbers indicate manual calculation; Red cell indicate data not available

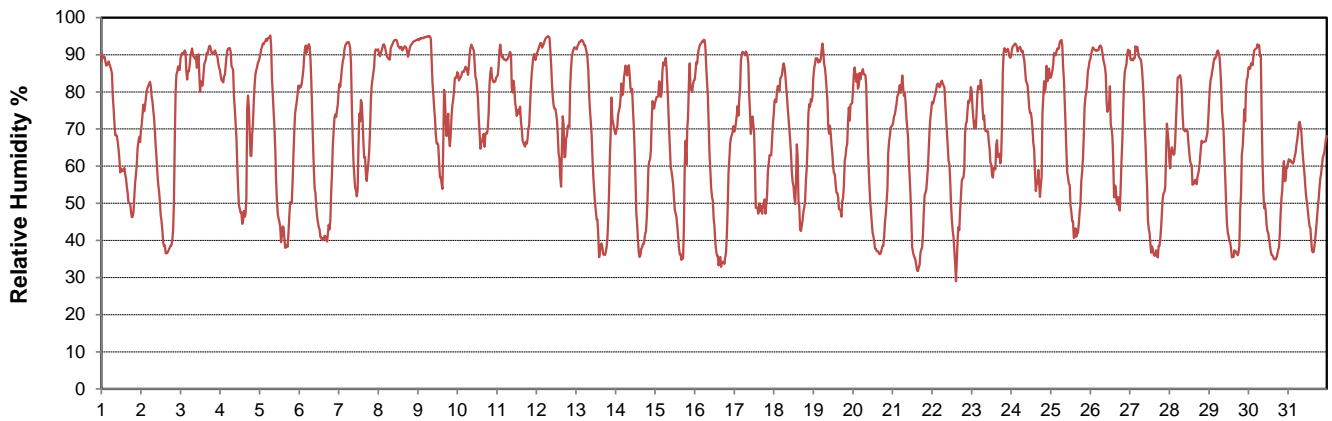
SRC proudly recognizes the following CRS supporters:



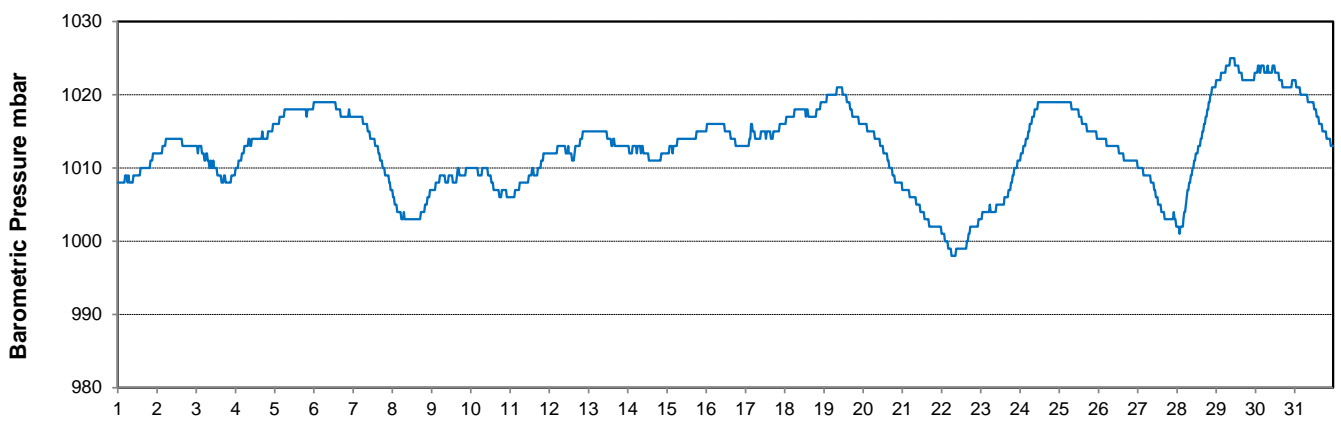
Temperature and Precipitation for August 2016



Relative Humidity for August 2016



Barometric Pressure Corrected to Sea Level for August 2016





SRC CLIMATE REFERENCE STATION DAILY DATA REPORT

SASKATOON STATION 4057180

Saskatchewan 52°09' N 106°36' W 497 m asl Estab. 1963

Preliminary **AUGUST 2016**

Day	Wind Gust			Soil Temperatures at 0900hrs								Soil Moisture 30 cm	Radiation				
	Max	Direction	Time	Surface	5 cm	10 cm	20 cm	50 cm	100 cm	150 cm	300 cm		0900hrs	Bright Sunshine	Possible	% Possible	Global
	km/h			°C	°C	°C	°C	°C	°C	°C	°C	%	hours	hours		MJ/m ²	MJ/m ²
1	52.1	W	12:49	16.5	17.5	18.5	19.5	18.5	15.0	13.5	10.5	21	9.4	15.5	60.8	18.8	7.5
2	41.0	WSW	11:46	18.5	17.0	18.0	18.5	18.0	15.0	13.5	10.5	21	14.6	15.4	94.8	25.3	3.4
3	38.8	NNW	18:20	15.5	18.5	19.0	19.0	18.0	15.0	13.5	10.5	20	0.1	15.3	0.7	3.6	2.7
4	35.8	WNW	16:35	16.5	16.5	17.0	17.5	17.5	15.0	13.5	10.5	25	11.3	15.3	73.9	22.7	5.0
5	19.7	NE	16:16	16.0	16.5	17.5	18.0	17.5	15.0	13.5	10.5	24	12.2	15.2	80.1	22.4	3.7
6	23.3	SE	14:53	19.0	17.0	18.0	18.5	17.5	15.0	13.5	10.5	23	13.2	15.2	87.0	24.5	2.6
7	34.7	E	17:47	19.5	18.0	19.0	19.0	17.5	14.5	13.5	10.5	22	6.7	15.1	44.3	13.0	6.6
8	33.4	NE	4:04	16.0	18.5	19.0	19.0	17.5	14.5	13.5	11.0	26	0.0	15.1	0.0	3.7	2.9
9	37.1	NNE	15:50	18.0	17.5	18.0	18.0	17.5	15.0	13.5	11.0	28	7.9	15.0	52.7	17.3	6.7
10	38.8	SSE	19:05	14.0	18.0	19.0	18.5	17.5	14.5	13.5	11.0	30	2.2	14.9	14.7	10.7	6.4
11	28.6	ESE	0:55	15.0	18.5	19.0	18.5	17.5	14.5	13.5	11.0	29	4.7	14.9	31.6	12.7	6.0
12	43.2	NNW	13:54	16.0	18.0	18.5	18.5	17.5	14.5	13.5	11.0	28	7.7	14.8	52.0	18.6	6.2
13	33.2	W	15:29	16.5	17.0	18.0	18.5	17.5	14.5	13.5	11.0	27	12.7	14.8	86.0	21.7	3.6
14	33.3	NW	4:20	15.5	18.5	19.5	19.0	17.5	14.5	13.5	11.0	27	9.8	14.7	66.7	19.3	2.3
15	32.7	WNW	16:00	19.0	19.0	20.0	19.5	18.0	15.0	13.5	11.0	27	12.0	14.6	82.0	22.2	3.3
16	24.3	W	16:27	19.0	19.0	19.5	20.0	18.5	15.0	13.5	11.0	26	13.1	14.6	89.8	22.0	3.0
17	34.0	WNW	16:08	17.0	20.0	20.5	20.5	18.5	15.0	13.5	11.0	26	8.2	14.5	56.5	17.4	6.9
18	48.7	N	14:07	14.5	17.5	19.0	19.5	18.5	15.0	13.5	11.0	32	11.7	14.5	81.0	20.1	3.7
19	27.8	NNW	12:22	13.5	17.0	17.5	18.5	18.0	15.0	13.5	11.0		5.1	14.4	35.4	14.0	6.8
20	24.3	SSW	16:21	14.5	16.0	17.0	17.5	17.5	15.0	14.0	11.0		10.9	14.3	76.1	21.2	2.9
21	31.1	ESE	21:37	16.5	18.0	18.5	18.5	17.5	15.0	14.0	11.5		10.1	14.3	70.8	19.2	4.9
22	36.3	SE	6:08	18.0	18.0	19.0	19.0	18.0	15.0	14.0	11.5		11.7	14.2	82.4	18.5	5.0
23	40.5	WSW	1:07	14.0	17.5	18.5	19.0	18.0	15.0	14.0	11.5		3.0	14.1	21.2	9.5	5.7
24	39.9	N	4:11	11.5	16.0	17.0	17.5	17.5	15.0	14.0	11.5		4.2	14.1	29.9	11.3	6.1
25	28.6	WSW	15:25	13.5	14.0	15.0	16.5	17.0	15.0	14.0	11.5		12.9	14.0	92.1	22.1	3.2
26	32.0	NW	14:25	14.0	16.5	17.0	17.0	17.0	15.0	14.0	11.5		4.7	14.0	33.7	11.8	6.6
27	41.3	SSE	13:20	14.0	14.0	15.0	16.0	16.5	15.0	14.0	11.5		10.8	13.9	77.8	18.3	5.1
28	43.1	NW	16:15	17.0	16.0	16.5	17.0	16.5	14.5	14.0	11.5		5.0	13.8	36.2	13.6	6.7
29	22.0	WNW	11:25	10.5	13.0	14.5	15.5	16.5	14.5	13.5	11.5		13.2	13.8	96.0	20.4	2.2
30	29.1	E	13:05	13.5	14.0	15.0	15.5	16.0	14.5	13.5	11.5		11.3	13.7	82.5	18.6	3.3
31	52.1	SE	16:03	16.0	15.0	16.0	16.0	16.0	14.5	13.5	11.5		11.9	13.6	87.4	16.8	5.6
Total													272.3	451.45	60.3	531.3	146.6
Mean				15.8	17.0	17.9	18.2	17.5	14.8	13.6	11.1						
Extreme	52.1	W	12:49	1971- 2000 Normal for Soil Temperatures									1981-2010 Normal for Radiation				
Date	1 & 31			16.5	16.9	18.1	16.8	14.1	12.3	9.1		271.3	452.5	60.0	542.1	182.4	
													No. of Bright Sunshine days = 30				

Note: Red numbers indicate manual calculation; Red cell indicate data not available

SRC proudly recognizes the following CRS supporters:

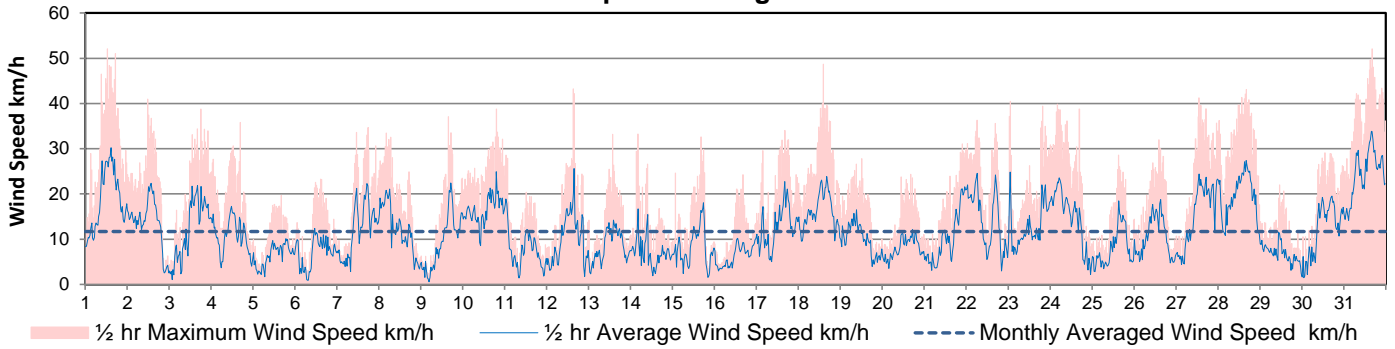


Agriculture and Agri-Food Canada

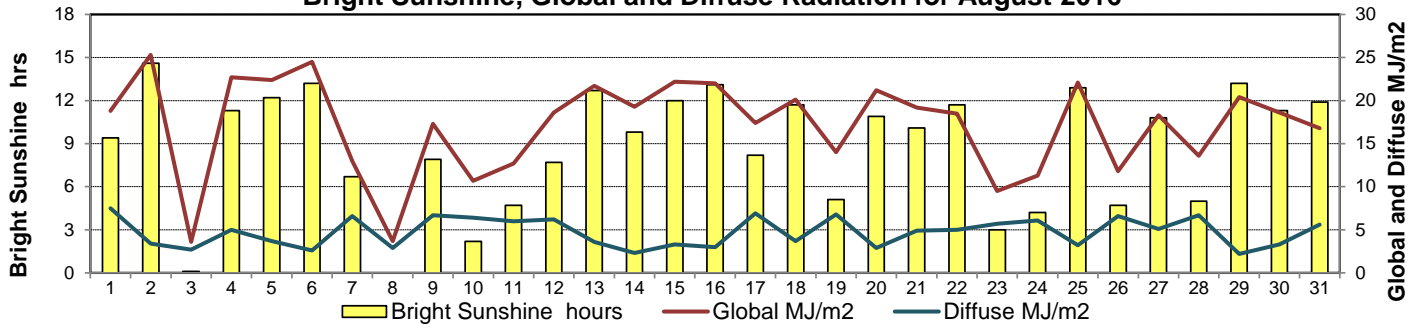
Agriculture et Agroalimentaire Canada



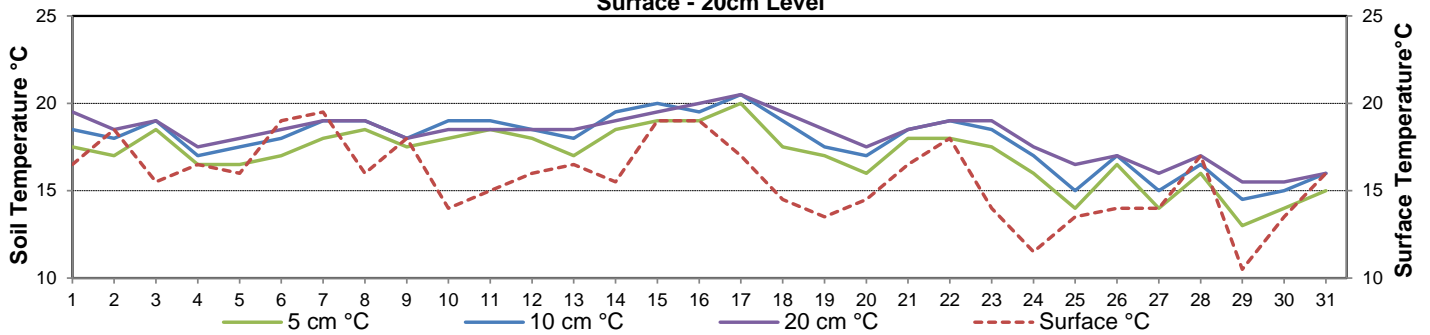
Wind Speed for August 2016



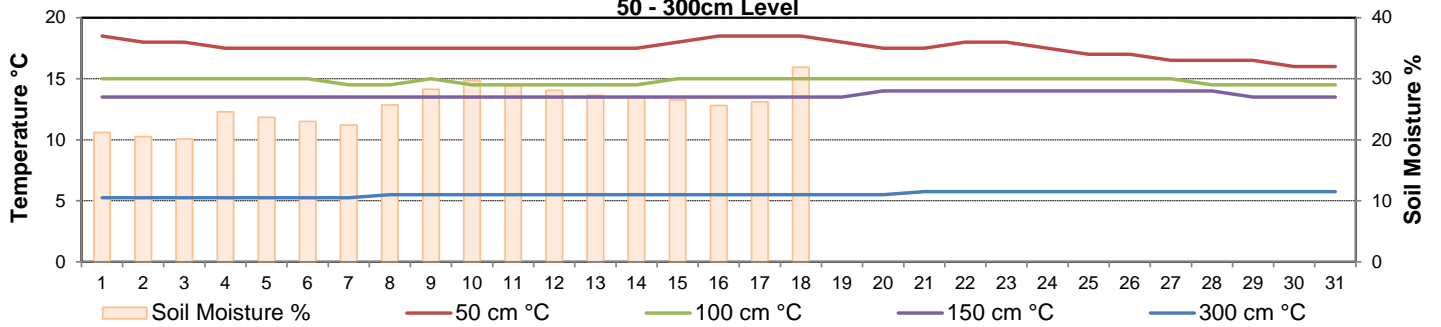
Bright Sunshine, Global and Diffuse Radiation for August 2016



Soil Temperatures for August 2016
Surface - 20cm Level



Soil Temperatures for August 2016
50 - 300cm Level





SRC CLIMATE REFERENCE STATION DAILY DATA REPORT

SASKATOON STATION 4057180



52°09' N 106°36' W 497 m asl Estab. 1963

Preliminary **AUGUST 2016**

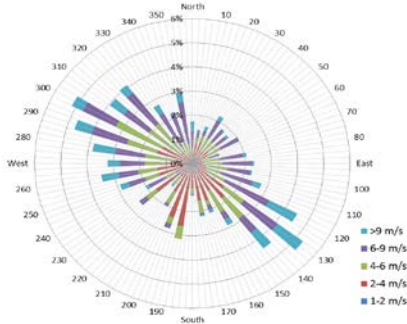
Extreme Records for August

Max/Min Temperature °C				Precipitation - Monthly mm				Wind Monthly km/h				CRS Bright Sunshine - Monthly					
S'toon Area	Date	Site	S'toon CRS	Date	S'toon Area	Date	Site	S'toon CRS	Date	S'toon Airport	Date	S'toon CRS**	Date	Hours	Year	No. of Days	Year
39.7	06/1998	SRC	39.7	06/1998	229.8	1953	SF	105.2	2007					360.8	1969	31	1966*
-2.8	23/1901 28/1976	SM SRC	-2.8	28/1976	0.0	1986	SC	7.0	2001	151 ^W	14/1967	129	1985	200.8	1987	27	1992*

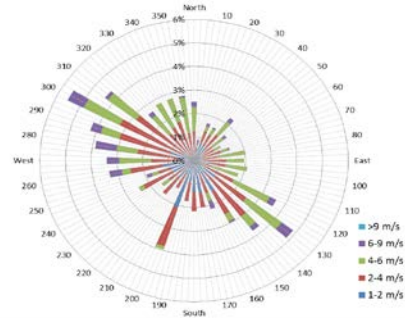
**1975 forward * more than one year

Notable Events for CRS Saskatoon - August						Saskatoon Area Stations			Glossary	
Element	Type	Day	New Record	Old Record	Year	Station	Location	Period	Term	Definition
Precipitation	Total Daily	3	21.9	6.4	1968	SM	NWMP	c. 1892-1901	T	Trace of precipitation
		24	6.2	5.0	2014	SE	Eby	1901-1941	Normal	30 year average beginning with the decade
						US	Univ. of Sask.	1915-1964	SOG	Depth of snow-on-the-ground in cm
						S	Saskatoon	1941-1942	na	not available
						SA	Saskatoon A	1942 -	Degree-days	
						NRC	Nat. Res. Council	1952-1966	Tm	Mean Temperature
						SRC	Sask. Res. Council	1963-	Growing	(Tm-5°C); if Tm ≤ 5°C then GDD = 0
						SWT	S'toon Water Treatment Plant	1974 -	Heating	(18°C-Tm); if Tm ≤ 18°C then HDD = 0
						SC	S'toon Central Ave	1974-1989	Cooling	(Tm-18°C); if Tm ≥ 18°C then CDD = 0
						S1	Saskatoon 1	1976-1978	Extreme Cooling	(Tm-24°C); if Tm ≥ 24°C then CDD = 0
						S2	Saskatoon 2	1977-1990		
						K	S'toon Kernen Farm	1993-2004		
						KCS	S'toon Kernen Farm CS	1996-		
						RCS	Environment Canada	2008-		
						SF	Sutherland Forestry	1943-1970		

1/2 hr Maximum Wind Speed and Direction Saskatoon August 2016



10 minute Average Wind Speed and Direction Saskatoon August 2016



SRC proudly recognizes the following CRS supporters:

