



# SRC CLIMATE REFERENCE STATION DAILY DATA REPORT

## CONSERVATION LEARNING CENTRE

Saskatchewan 53.03°N 105.77°W Estab. 2011

Preliminary

**June 2015**

Day	Temperature			Degree-days			Precipitation			Relative Humidity		Station Pressure <i>corrected to sea level</i>	
	Max	Min	Mean	Growing	Heating	Cooling	Weighing Gauge	Tipping Bucket	Notes	Max ½ hr Avg	Min ½ hr Avg	Max ½ hr Avg	Min ½ hr Avg
	°C	°C	°C	5°C base	18°C base	18°C base	mm	mm		%	%	mbar	mbar
1	19.8	10.1	15.0	10.0	3.0	0.0	0.5	1.4		95	48	1014	1005
2	18.7	6.1	12.4	7.4	5.6	0.0	0.0	0.0		86	28	1017	1014
3	22.3	6.5	14.4	9.4	3.6	0.0	0.0	0.0		89	19	1017	1015
4	24.1	7.9	16.0	11.0	2.0	0.0	0.0	0.0		77	17	1020	1017
5	24.3	13.0	18.7	13.7	0.0	0.7	3.2	3.4		94	31	1020	1011
6	26.3	10.7	18.5	13.5	0.0	0.5	3.3	3.4		96	34	1011	1005
7	27.2	13.5	20.4	15.4	0.0	2.4	0.0	0.0		88	23	1008	1006
8	27.0	13.4	20.2	15.2	0.0	2.2	0.0	0.0		82	27	1007	1003
9	23.2	11.2	17.2	12.2	0.8	0.0	0.0	0.0		82	30	1011	1006
10	23.9	9.5	16.7	11.7	1.3	0.0	0.0	0.0		94	26	1012	1010
11	24.9	12.3	18.6	13.6	0.0	0.6	1.9	3.8		77	28	1012	1002
12	23.4	13.8	18.6	13.6	0.0	0.6	15.2	14.4		93	32	1002	997
13	16.1	9.9	13.0	8.0	5.0	0.0	10.5	11.0		92	67	1009	1002
14	12.4	7.2	9.8	4.8	8.2	0.0	0.6	1.0		90	67	1020	1009
15	19.9	6.1	13.0	8.0	5.0	0.0	0.0	0.0		92	32	1022	1017
16	23.1	8.0	15.6	10.6	2.4	0.0	0.0	0.0		79	30	1017	1010
17	18.0	8.0	13.0	8.0	5.0	0.0	0.0	0.2		87	35	1019	1011
18	21.6	5.1	13.4	8.4	4.6	0.0	0.0	0.0		95	29	1020	1012
19	24.0	13.1	18.6	13.6	0.0	0.6	1.7	2.0		88	46	1011	1006
20	19.6	11.9	15.8	10.8	2.2	0.0	0.0	0.0		94	63	1010	1008
21	22.0	9.9	16.0	11.0	2.0	0.0	0.2	0.4		94	35	1009	1006
22	22.9	10.1	16.5	11.5	1.5	0.0	1.7	2.2		89	41	1013	1009
23	24.4	8.8	16.6	11.6	1.4	0.0	0.0	0.2		95	33	1015	1013
24	26.6	11.1	18.9	13.9	0.0	0.9	0.7	0.8		93	34	1015	1013
25	30.1	12.5	21.3	16.3	0.0	3.3	0.0	0.0		94	25	1016	1014
26	29.3	13.4	21.4	16.4	0.0	3.4	0.3	0.8		91	36	1015	1011
27	29.0	15.9	22.5	17.5	0.0	4.5	0.0	0.0		81	28	1014	1012
28	31.8	13.0	22.4	17.4	0.0	4.4	0.0	0.0		93	29	1014	1011
29	23.9	16.1	20.0	15.0	0.0	2.0	0.0	0.0		87	49	1016	1013
30	23.6	15.4	19.5	14.5	0.0	1.5	0.0	0.0		94	62	1014	1011
Total				364.0	53.6	27.6	39.8	45					
Avg	23.4	10.8	17.1				132.1	Cumulative ppt					
Extreme	31.8	5.1					15.2	14.4		96	17	1022	997
Date	28	18					12	12		6	4	15	12

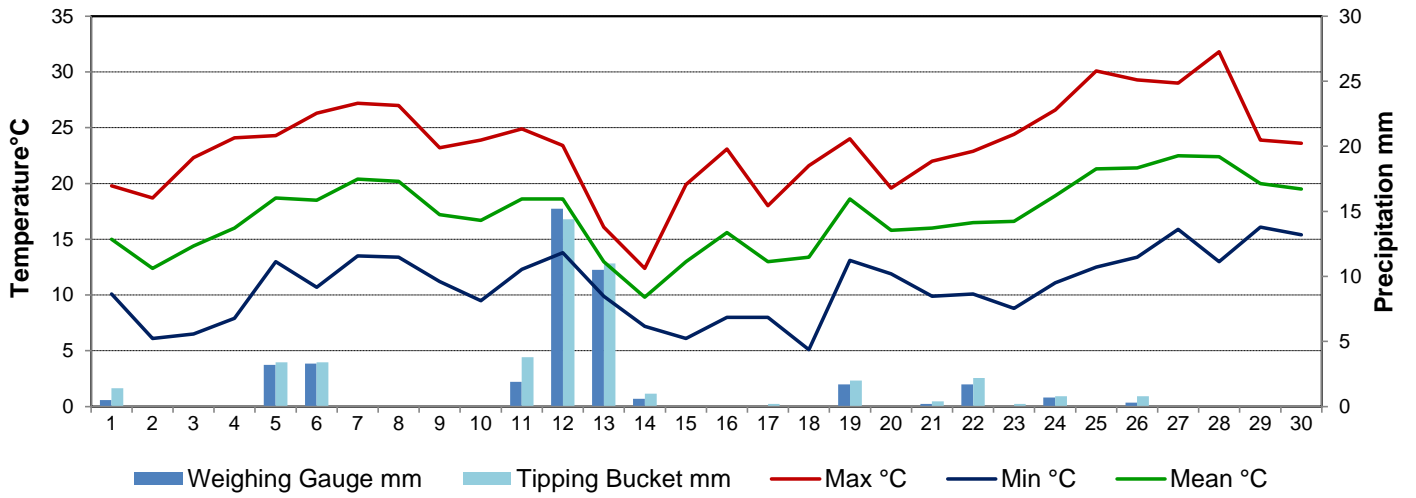
New Anemometer installed 3 June 2015

NOTE: thick smoke from forest fires in northern Saskatchewan June 29-30

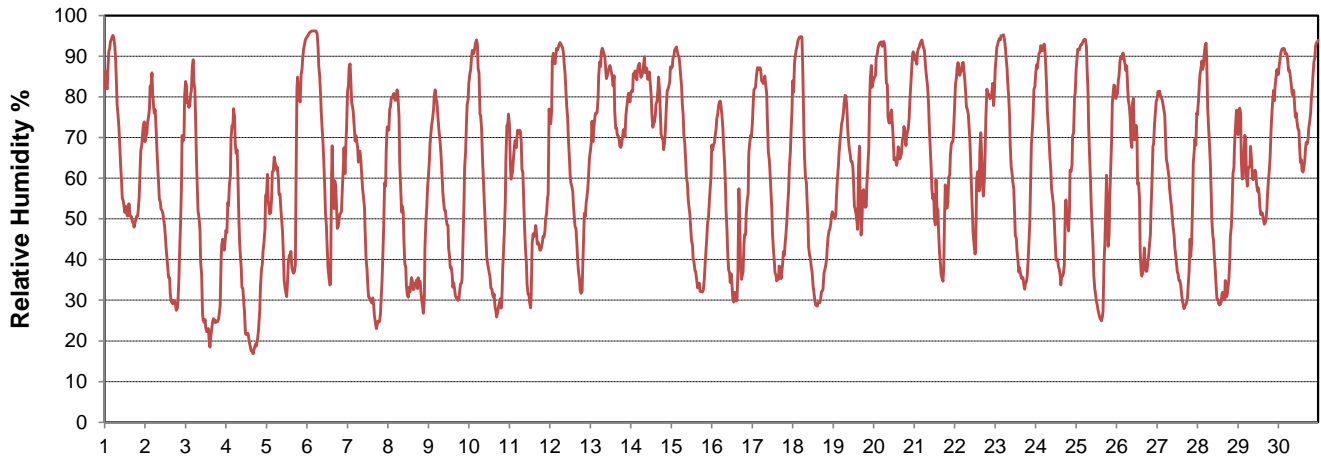
**SRC proudly recognizes the following CRS supporters:**



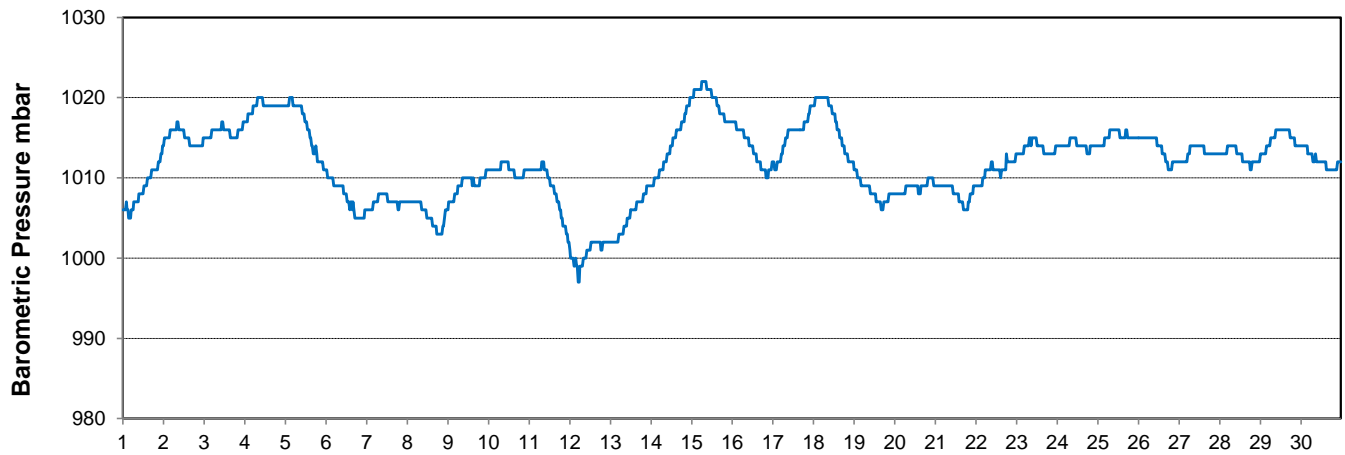
### Temperature and Precipitation for June 2015



### Relative Humidity for June 2015



### Barometric Pressure Corrected to Sea Level for June 2015





# SRC CLIMATE REFERENCE STATION DAILY DATA REPORT

## CONSERVATION LEARNING CENTRE

Saskatchewan 53.03°N 105.77°W Estab. 2011

Preliminary

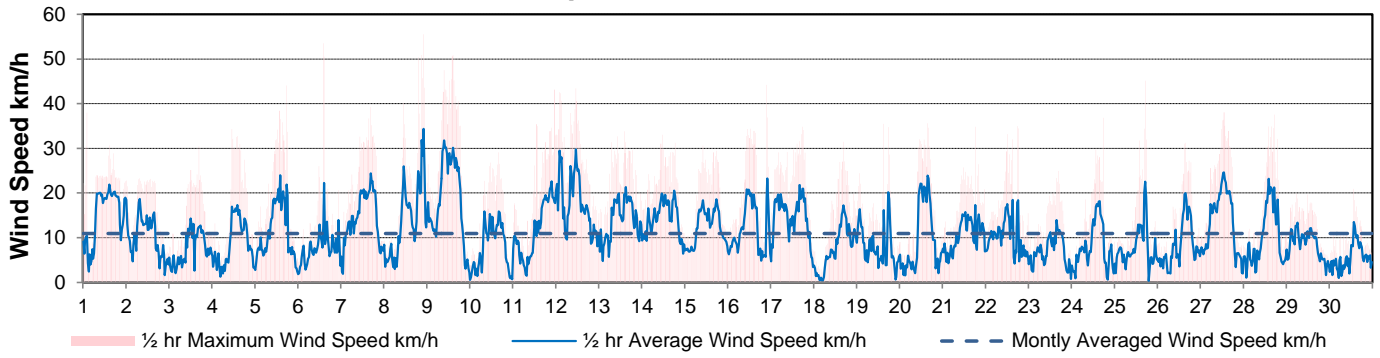
**June 2015**

Day	Wind Gust			Soil Temperatures at 0900hrs								Soil Moisture	Radiation		
	Max	Direction	Time	Surface	5 cm	10 cm	20 cm	50 cm	100 cm	150 cm	300 cm	0900hrs	Bright Sunshine	Global	Diffuse
	km/h			°C	°C	°C	°C	°C	°C	°C	°C	%	hours	MJ/m <sup>2</sup>	MJ/m <sup>2</sup>
1	37.9	W	2:02	15.5	10.5	10.5	10.0	8.0	6.0	4.0	3.5	35	14.2	26.3	7.7
2	23.3	NNE	7:43	10.5	10.5	10.5	10.5	8.5	6.0	4.5	3.5	35	15.3	27.0	10.4
3	30.4	SSE	16:39	14.5	10.5	10.5	10.5	8.5	6.0	4.5	3.5	35	15.0	27.0	7.7
4	34.3	ENE	11:27	15.0	11.0	11.0	10.5	9.0	6.5	4.5	3.5	35	14.0	26.1	8.6
5	44.0	WNW	17:46	18.5	12.5	12.0	11.5	9.0	6.5	4.5	3.5	35	7.6	19.6	10.7
6	53.5	W	14:28	18.0	12.5	12.5	11.5	9.5	6.5	5.0	3.5	35	13.0	23.3	6.6
7	39.2	NW	16:54	20.0	13.5	13.0	12.5	9.5	7.0	5.0	3.5	36	14.1	26.8	9.5
8	55.5	N	22:13	20.5	14.5	14.0	13.0	10.0	7.0	5.0	3.5	35	7.1	16.4	11.1
9	50.9	NW	14:40	18.0	13.5	13.5	13.0	10.5	7.0	5.0	3.5	35	13.8	25.9	9.3
10	29.1	NW	16:20	17.5	13.0	13.0	12.5	10.5	7.5	5.5	3.5	35	13.6	27.8	6.7
11	43.1	SE	23:27	18.5	14.0	13.5	13.0	10.5	7.5	5.5	3.5	35	7.8	17.9	10.1
12	43.5	NW	11:05	14.0	14.0	13.5	13.0	10.5	7.5	5.5	3.0	38	8.6	21.7	8.3
13	33.8	NW	14:04	11.0	14.5	14.0	13.5	10.5	7.5	5.5	3.0	39	1.3	9.7	7.8
14	33.0	NNW	11:36	10.5	12.5	12.0	12.0	9.5	7.0	5.0	2.0	38	3.4	11.8	10.1
15	30.6	WNW	10:15	14.0	11.0	9.5	10.0	8.0	6.0	4.0	1.0	37	14.6	27.7	8.3
16	44.2	N	21:41	16.5	13.0	12.5	12.5	11.0	8.5	6.0	3.5	37	11.5	23.3	7.2
17	34.8	NW	17:55	11.5	13.5	13.0	12.5	10.5	8.0	6.0	3.0	37	8.9	21.5	8.2
18	31.5	S	16:37	13.5	12.5	12.5	13.0	11.0	8.5	6.5	4.0	37	10.6	23.6	8.9
19	35.5	WNW	15:07	18.0	14.0	13.5	13.0	11.0	8.5	6.5	3.5	37	10.5	22.0	8.9
20	35.6	NW	15:51	17.5	14.5	14.0	13.5	11.5	9.0	6.5	4.0	37	2.1	13.6	10.2
21	34.8	WNW	18:05	15.5	14.0	13.5	13.5	11.5	8.5	6.5	3.5	37	8.2	19.4	11.9
22	35.0	N	17:45	16.5	14.0	14.0	13.5	11.5	9.0	7.0	4.0	37	8.5	16.6	8.9
23	24.9	WSW	16:47	16.5	14.0	13.5	13.5	11.5	9.0	7.0	4.0	37	15.6	29.1	5.9
24	36.8	WNW	17:40	18.0	14.5	14.5	14.0	12.0	9.0	7.0	4.0	36	13.7	26.0	6.5
25	45.1	NW	17:09	19.5	15.5	15.0	14.5	12.5	9.5	7.0	4.0	36	12.5	24.3	7.2
26	31.2	SW	15:53	20.0	15.5	15.5	15.0	12.5	9.5	7.5	4.0	36	10.1	20.3	9.1
27	38.0	NNW	13:11	22.0	16.0	16.0	15.5	13.0	9.5	7.5	4.5	36	15.8	28.1	6.6
28	37.5	W	17:01	21.5	16.5	16.0	15.5	13.0	10.0	7.5	4.5	36	15.1	26.9	7.1
29	19.8	NW	5:49	17.5	16.5	16.5	16.0	13.5	10.0	7.5	4.5	35	0.2	10.3	7.8
30	21.0	SW	13:55	17.5	16.0	16.0	15.5	13.5	10.5	8.0	4.5	35	1.0	9.4	7.5
Total													307.7	649.4	254.8
Mean				16.6	13.6	13.3	12.9	10.7	8.0	5.9	3.6	36.1			
Extreme Date	55.5	N	22:13												
	8														

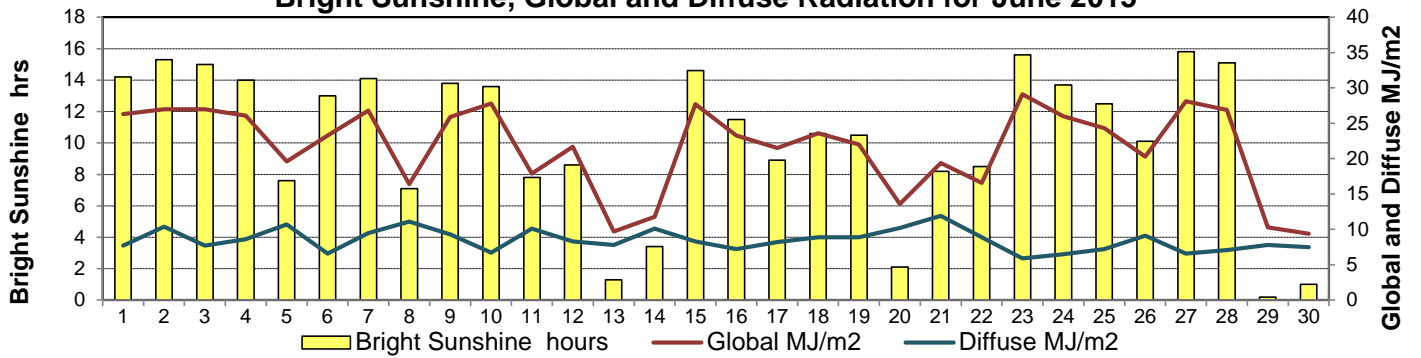
### GLOSSARY OF TERMS

<b>Degree-days</b>	<b>Radiation</b>
Tm Mean Temperature	Bright Sunshine is the unobstructed direct radiation from the sun, as opposed to the shading of a location by clouds or by other atmospheric obstructions.
Growing (Tm-5°C); if Tm ≤ 5°C then GDD = 0	
Heating (18°C-Tm); if Tm ≥ 18°C then HDD = 0	
Cooling (Tm-18°C); if Tm ≤ 18°C then CDD = 0	Diffuse is radiation reaching the earth's surface after having been scattered from the direct solar beam
T Trace of Precipitation	Global is the sum of the direct solar and diffuse radiation
SOG Depth of snow-on-the-ground	
Red Cell no data available	<b>Relative Humidity</b> The ratio of the air's water vapour content to its water vapour capacity which changes with temperature.
Red Number manual calculation	<b>Air Pressure</b> The force exerted by the weight of a column of air above a given point
	<b>Wind Gust</b> The daily highest instantaneous value recorded irrespective of direction and/or duration

### Wind Speed for June 2015

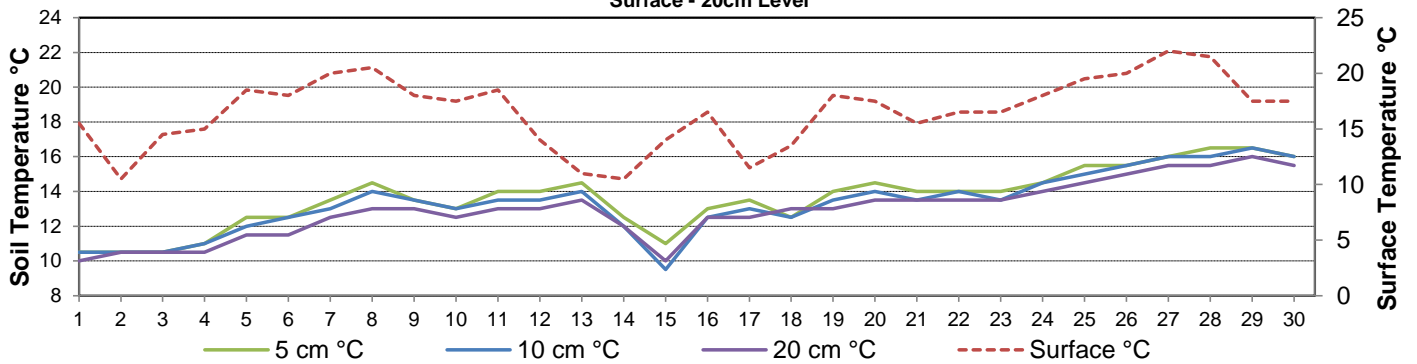


### Bright Sunshine, Global and Diffuse Radiation for June 2015



### Soil Temperatures for June 2015

Surface - 20cm Level



### Soil Temperatures for June 2015

50 - 300cm Level

