



SRC CLIMATE REFERENCE STATION DAILY DATA REPORT

CONSERVATION LEARNING CENTRE

Saskatchewan 53.03°N 105.77°W 451m asl Estab. 2011

Preliminary **May 2023**

Day	Temperature						Degree-days			Precipitation			Relative Humidity		Station Pressure <i>corrected to sea level</i>	
	Max	Avg Max	Min	Avg Min	Mean	Avg Mean	Growing	Heating	Cooling	Geonor all-season ppt Gauge	Tipping Bucket	Notes	Max ½ hr Avg	Min ½ hr Avg	Max ½ hr Avg	Min ½ hr Avg
	°C	2012-2021	°C	2012-2021	°C	2012-2021	5°C base	18°C base	18°C base	mm	mm		%	%	mbar	mbar
1	19.3	14.8	-0.9	1.4	9.2	8.1	4.2	8.8	0.0	0.0	0.0		86	23	1018	1013
2	27.4	13.6	3.8	1.1	15.6	7.4	10.6	2.4	0.0	0.0	0.0		79	16	1014	1008
3	25.5	13.9	1.8	0.7	13.7	7.3	8.7	4.3	0.0	0.0	0.0		100	16	1012	1010
4	25.0	15.2	4.2	0.6	14.6	7.9	9.6	3.4	0.0	0.0	0.0		84	22	1016	1011
5	17.4	17.3	3.7	2.8	10.6	10.1	5.6	7.4	0.0	0.0	0.0		87	34	1020	1016
6	17.6	15.9	2.1	3.0	9.9	9.5	4.9	8.1	0.0	0.0	0.0		90	35	1020	1017
7	19.7	15.9	2.7	2.0	11.2	9.0	6.2	6.8	0.0	0.0	0.0		87	32	1018	1016
8	19.5	15.1	3.9	1.2	11.7	8.2	6.7	6.3	0.0	0.0	0.0		84	39	1017	1014
9	17.9	16.0	5.7	1.9	11.8	9.0	6.8	6.2	0.0	0.0	0.0		97	49	1015	1013
10	23.9	12.1	1.6	0.7	12.8	6.5	7.8	5.2	0.0	0.0	0.0		100	29	1015	1013
11	25.0	13.3	3.6	1.2	14.3	7.3	9.3	3.7	0.0	0.0	0.0		99	27	1019	1015
12	23.9	17.0	10.8	1.4	17.4	9.2	12.4	0.6	0.0	0.0	0.0		82	32	1028	1019
13	27.0	17.8	5.2	4.0	16.1	10.9	11.1	1.9	0.0	0.0	0.0		100	26	1032	1028
14	28.8	18.5	7.6	2.8	18.2	10.6	13.2	0.0	0.2	0.0	0.0		87	18	1032	1026
15	29.7	19.4	9.2	3.4	19.5	11.4	14.5	0.0	1.5	0.0	0.0		76	23	1026	1016
16	30.0	19.5	9.0	5.2	19.5	12.4	14.5	0.0	1.5	0.0	0.0		80	24	1015	1008
17	11.4	18.6	3.5	5.7	7.5	12.2	2.5	10.5	0.0	0.4	0.2		93	58	1017	1012
18	17.9	19.6	1.4	4.8	9.7	12.2	4.7	8.3	0.0	0.0	0.0		90	27	1021	1018
19	25.1	20.0	-0.4	4.7	12.4	12.3	7.4	5.6	0.0	0.0	0.0		94	22	1021	1011
20	21.7	19.6	7.4	5.4	14.6	12.5	9.6	3.4	0.0	0.0	0.0		83	40	1020	1011
21	21.1	22.3	5.1	6.8	13.1	14.6	8.1	4.9	0.0	0.0	0.0		94	40	1021	1013
22	28.5	21.4	9.5	7.4	19.0	14.4	14.0	0.0	1.0	0.1	0.4		81	35	1012	1007
23	18.1	21.8	7.0	7.1	12.6	14.5	7.6	5.4	0.0	1.4	1.4		92	68	1020	1012
24	20.3	20.3	6.0	9.2	13.2	14.7	8.2	4.8	0.0	6.1	6.4		99	59	1019	1011
25	13.5	19.1	11.3	7.1	12.4	13.2	7.4	5.6	0.0	13.1	14.4		100	90	1015	1010
26	20.0	19.5	9.9	7.9	15.0	13.7	10.0	3.0	0.0	0.0	0.0		100	66	1015	1013
27	19.4	19.8	6.8	5.9	13.1	12.9	8.1	4.9	0.0	0.0	0.0		100	62	1016	1011
28	21.7	19.8	12.0	6.9	16.9	13.3	11.9	1.1	0.0	0.0	0.0		100	67	1011	1005
29	28.1	20.5	9.5	7.5	18.8	14.0	13.8	0.0	0.8	0.0	0.0		100	30	1005	1003
30	29.0	21.2	8.2	6.1	18.6	13.7	13.6	0.0	0.6	0.0	0.0		96	28	1007	1005
31	31.4	22.0	12.3	9.0	21.9	15.6	16.9	0.0	3.9	0.0	0.0		94	26	1009	1006
Total							289.9	122.6	9.5	21.1	22.8					
Avg	22.7	18.1	5.9	4.4	14.4	11.3	Monthly 2012 - 2021 Average			38.3	2012-2021 Average					
Extreme	31.4	32.4	-0.9	-8.8			199.3	211.2	3.5	61.2	2023 Cumulative ppt		100	16	1032	1003
Date	31	2016	1	2019						99.7	Cumulative Average		3	2	13	29

SRC proudly recognizes the following CRS supporters:



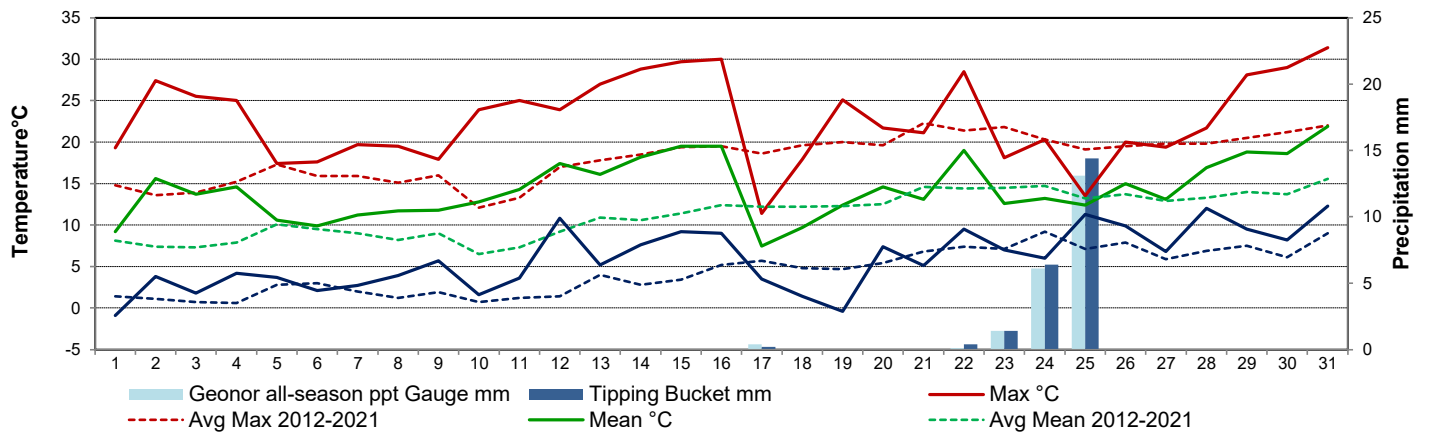
Agriculture and Agri-Food Canada

Agriculture et Agroalimentaire Canada

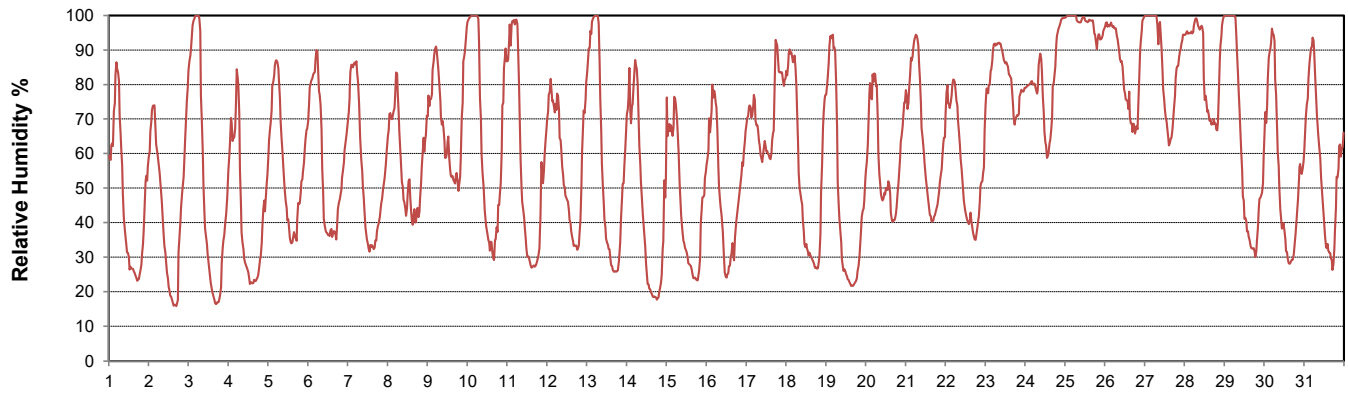


CAMPBELL SCIENTIFIC
WHEN MEASUREMENTS MATTER

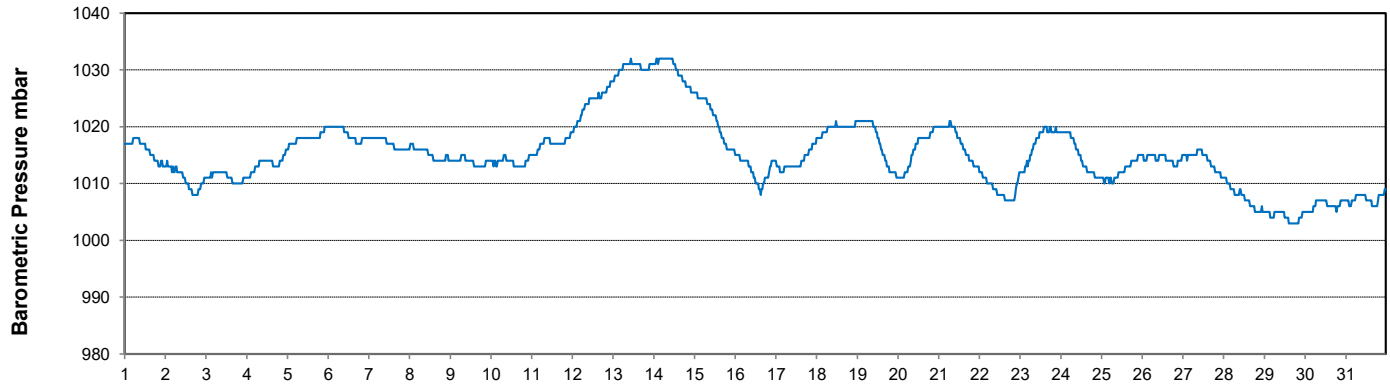
Temperature and Precipitation for May 2023



Relative Humidity for May 2023



Barometric Pressure Corrected to Sea Level for May 2023





SRC CLIMATE REFERENCE STATION DAILY DATA REPORT

CONSERVATION LEARNING CENTRE

Saskatchewan 53.03°N 105.77°W 451m asl Estab. 2011

Preliminary

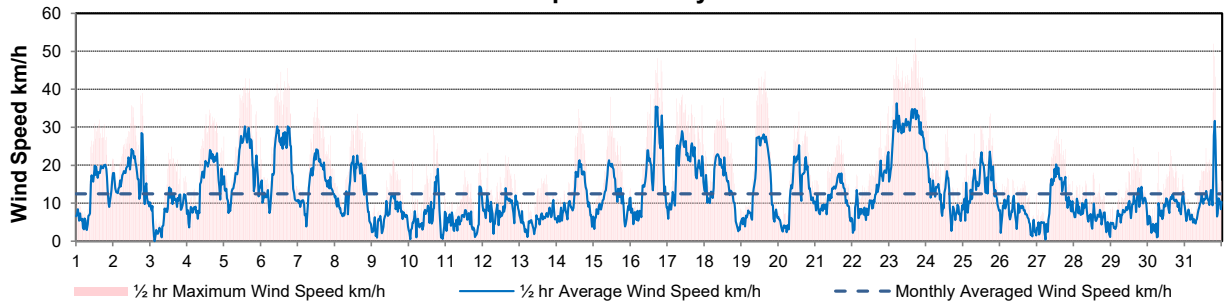
May 2023

Day	Wind Gust			Wind Speed (10 meters)	Soil Temperatures at 0900hrs								Radiation				
	Max	Direction	Time	Daily Average	Surface	5 cm	10 cm	20 cm	50 cm	100 cm	150 cm	300 cm	Bright Sunshine	Possible	% Possible	Global	Diffuse
	km/h			km/h	°C	°C	°C	°C	°C	°C	°C	°C	hours	hours		MJ/m ²	MJ/m ²
1	31.9	S	15:17	12.5	10.0	1.5	1.5	1.0	0.0	0.5	1.0	3.0	14.4	15.0	95.9	25.5	3.5
2	39.0	NNE	18:35	17.1	14.5	3.0	2.5	2.0	0.0	0.5	1.0	3.0	13.2	15.1	87.5	24.3	5.2
3	24.8	SE	13:40	8.0	14.0	4.0	3.5	2.5	0.0	0.5	1.0	3.0	14.5	15.2	95.7	26.1	3.2
4	34.6	ENE	14:56	15.2	17.5	4.5	4.0	3.5	0.0	0.5	1.0	3.0	14.3	15.2	94.0	25.9	3.8
5	42.8	E	13:53	19.1	11.5	5.0	5.0	4.0	0.5	0.5	1.0	3.0	9.3	15.3	60.9	19.3	8.0
6	45.6	E	17:27	19.3	11.0	4.5	4.0	3.5	1.0	0.5	1.0	3.0	9.5	15.3	62.0	20.7	7.9
7	37.4	E	12:32	15.2	12.0	4.5	4.0	3.5	1.0	0.5	1.0	3.0	9.0	15.4	58.5	19.2	9.0
8	33.4	ESE	14:51	13.1	14.0	5.5	5.0	4.0	1.5	0.5	1.0	3.0	10.8	15.5	69.9	21.0	8.6
9	21.5	NNE	13:50	6.9	12.5	6.0	6.0	5.0	2.0	0.5	1.0	3.0	7.1	15.5	45.8	16.1	9.6
10	29.9	N	16:29	6.6	14.5	5.5	5.5	5.0	2.5	1.0	1.0	3.0	11.6	15.6	74.6	22.8	5.1
11	21.7	WSW	22:22	5.9	17.5	6.5	6.0	5.5	3.5	1.5	1.0	3.0	10.4	15.6	66.6	19.3	10.1
12	23.2	SSW	3:09	8.3	17.5	8.5	8.0	6.5	4.0	1.5	1.5	3.0	9.1	15.7	58.1	18.7	10.3
13	17.5	S	17:29	5.5	15.5	8.0	7.5	7.0	5.0	2.0	1.5	3.0	12.6	15.7	80.1	21.2	8.8
14	34.8	SSW	14:23	11.2	18.0	8.5	8.5	7.5	5.5	2.5	1.5	3.0	14.0	15.8	88.7	24.0	8.2
15	38.0	WNW	10:30	11.7	23.0	9.0	9.0	8.0	6.0	2.5	1.5	3.0	14.4	15.8	90.9	26.2	5.4
16	48.2	N	17:18	17.1	22.0	10.0	10.0	9.0	6.5	3.0	2.0	3.0	9.2	15.9	57.9	18.8	7.3
17	38.5	NW	9:49	19.6	11.0	9.0	9.5	9.0	7.0	3.5	2.0	3.0	1.6	15.9	10.0	8.6	7.1
18	37.7	N	12:23	14.2	8.5	7.5	7.5	7.5	7.0	4.0	2.5	3.0	14.9	16.0	93.2	28.2	4.3
19	44.7	SSW	15:06	15.3	15.5	7.0	7.5	7.5	7.0	4.0	2.5	3.0	13.5	16.0	84.2	27.5	5.0
20	34.1	NE	13:13	12.6	15.5	9.0	9.0	8.5	7.0	4.0	2.5	3.0	7.4	16.1	46.0	14.1	9.5
21	27.7	SE	15:16	11.4	9.5	8.5	9.0	8.5	7.0	4.5	3.0	3.0	10.7	16.1	66.3	17.2	10.6
22	35.5	E	23:09	11.5	17.0	9.5	9.5	8.5	7.5	4.5	3.0	3.0	7.8	16.2	48.2	17.6	11.2
23	53.4	E	16:54	29.8	8.5	10.5	11.0	9.5	7.5	4.5	3.0	3.0	2.0	16.2	12.3	10.1	8.0
24	31.6	E	0:09	11.3	7.0	8.5	9.0	8.5	8.0	5.0	3.5	3.0	1.0	16.3	6.1	7.6	6.2
25	33.6	NNE	17:31	14.5	12.5	10.5	10.5	9.0	7.5	5.0	3.5	3.0	0.0	16.3	0.0	4.0	3.5
26	16.7	NNW	4:57	7.1	14.5	10.5	10.5	9.0	8.0	5.0	3.5	3.0	4.2	16.4	25.7	12.5	9.0
27	29.9	E	13:39	10.5	13.0	10.5	10.5	9.5	8.0	5.5	3.5	3.0	8.3	16.4	50.6	20.0	9.5
28	18.0	S	12:34	6.6	14.0	11.5	12.0	10.5	8.5	5.5	4.0	3.0	4.3	16.4	26.2	13.6	9.9
29	24.7	N	14:41	8.3	19.5	12.0	12.0	11.0	9.0	6.0	4.0	3.0	13.8	16.5	83.7	25.3	8.5
30	24.0	E	14:42	8.1	18.5	12.0	12.5	11.5	9.5	6.0	4.0	3.0	11.7	16.5	70.8	23.1	9.4
31	51.9	SSE	18:52	10.3	22.0	13.0	13.5	12.0	10.0	6.5	4.5	3.0	10.5	16.6	63.4	22.4	6.7
Total													295.1	491.5	60.0	600.9	232.4
Mean					14.6	7.9	7.9	7.0	5.1	3.0	2.2	3.0					
Extreme	53.4	E	16:54														
Date	23																

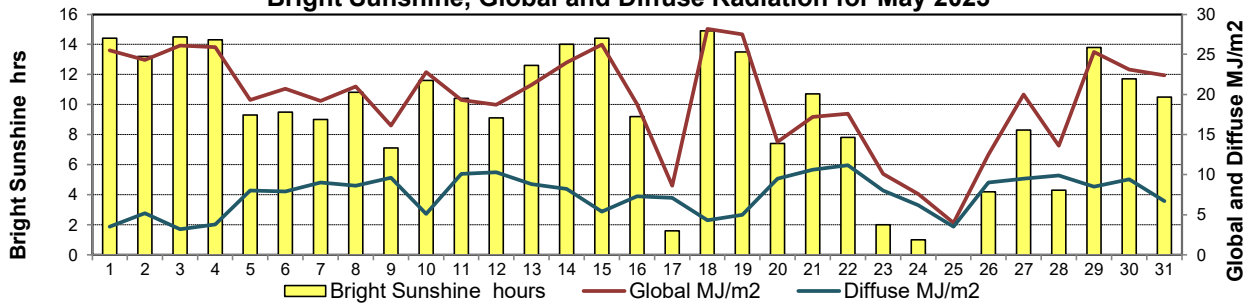
GLOSSARY OF TERMS

Degree-days	Radiation
Tm Mean Temperature	Bright Sunshine is the unobstructed direct radiation from the sun, as opposed to the shading of a location by clouds or by other atmospheric obstructions.
Growing (Tm-5°C); if Tm ≤ 5°C then GDD = 0	
Heating (18°C-Tm); if Tm ≥ 18°C then HDD = 0	
Cooling (Tm-18°C); if Tm ≤ 18°C then CDD = 0	Diffuse is radiation reaching the earth's surface after having been scattered from the direct solar beam
T Trace of Precipitation	Global is the sum of the direct solar and diffuse radiation
SOG Depth of snow-on-the-ground	
Red Cell no data available	Relative Humidity The ratio of the air's water vapour content of its water vapour capacity which changes with temperature.
Red Number manual calculation	Air Pressure The force exerted by the weight of a column of air above a given point
	Wind Gust The daily highest instantaneous value recorded irrespective of direction and/or duration

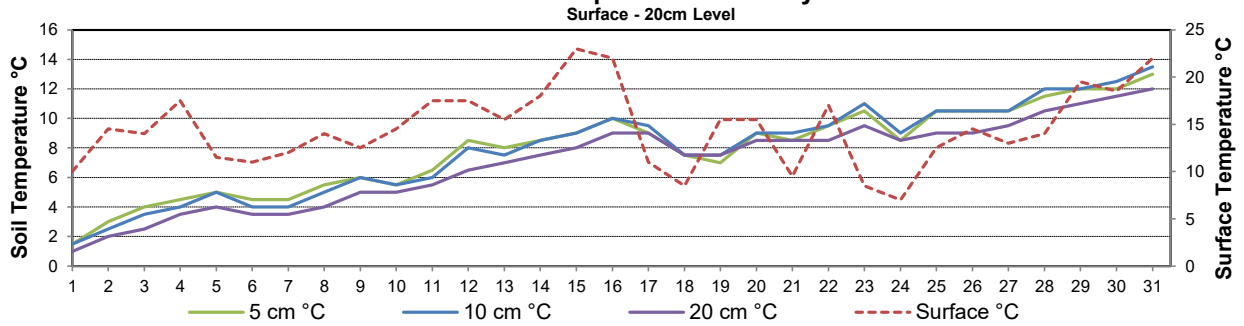
Wind Speed for May 2023



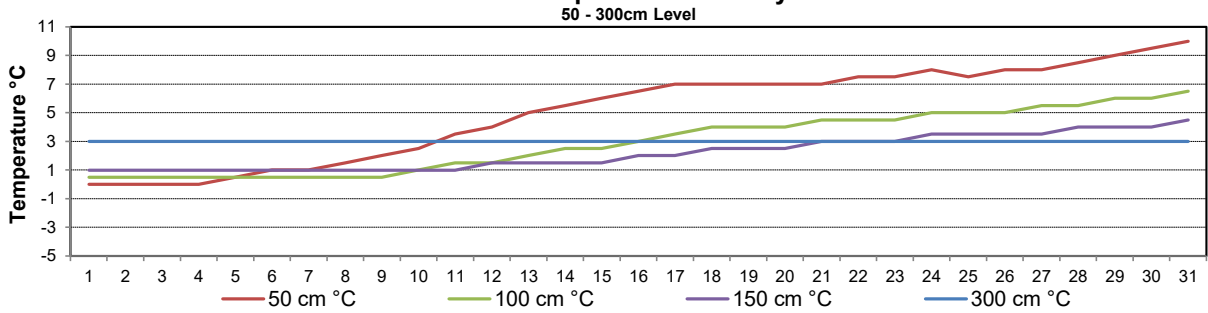
Bright Sunshine, Global and Diffuse Radiation for May 2023



9 am Soil Temperatures for May 2023



9 am Soil Temperatures for May 2023





SRC CLIMATE REFERENCE STATION DAILY DATA REPORT

CONSERVATION LEARNING CENTRE

Saskatchewan 53.03°N 105.77°W 451m asl Estab. 2011

Preliminary

May 2023

Day	2 meter Wind Speed			Soil Moisture at 0900 hrs (rounded to the 0.5%)		
	Daily Average	Max ½ hr Avg	½ hr Extreme Max	10 cm	20 cm	50 cm
	km/h	km/h	km/h	% by volume (soil type is Clay Loam)		
1	7.0	15.6	26.2	34.5	38.0	44.0
2	12.0	21.6	34.1	34.5	38.0	44.0
3	5.0	11.9	20.8	34.0	37.5	44.0
4	10.0	19.9	29.6	34.0	37.5	43.5
5	15.0	24.4	35.6	33.5	37.5	43.5
6	15.0	24.7	37.9	33.5	37.0	43.5
7	11.0	18.1	30.0	33.5	37.0	44.0
8	7.0	17.1	25.4	33.5	37.0	44.0
9	3.0	10.5	18.9	33.0	37.0	44.0
10	4.0	13.6	26.2	33.0	37.0	43.0
11	2.0	10.4	17.4	33.0	37.0	43.0
12	4.0	10.7	20.0	33.0	37.0	43.5
13	1.0	6.8	14.3	33.0	37.0	43.5
14	7.0	17.6	31.0	33.0	37.0	43.5
15	7.0	16.4	28.9	33.0	37.0	43.5
16	12.0	27.8	38.9	33.0	37.0	43.5
17	15.0	21.9	30.0	33.0	37.0	44.0
18	10.0	18.1	29.3	32.5	37.0	44.0
19	11.0	23.0	36.2	32.0	36.5	43.5
20	8.0	20.3	27.5	32.5	36.5	43.5
21	7.0	13.1	22.4	32.0	36.5	43.5
22	8.0	18.9	27.5	32.0	36.5	43.5
23	23.0	28.3	41.2	32.0	36.0	44.0
24	7.0	17.7	26.4	32.0	36.0	44.0
25	10.0	18.5	26.2	37.0	36.5	44.0
26	3.0	10.0	14.7	36.5	37.0	44.0
27	7.0	16.4	26.0	35.5	37.0	44.5
28	4.0	8.9	16.2	35.0	37.5	44.5
29	4.0	11.6	22.0	34.5	37.0	44.0
30	3.0	8.5	21.2	34.0	37.0	44.0
31	5.0	13.0	40.0	34.0	36.5	44.0
Total						
Mean				34	37	43.8
Extreme	23.0	28.3	41.2	37	38	44.5
Date	0	0	0	0	0	0

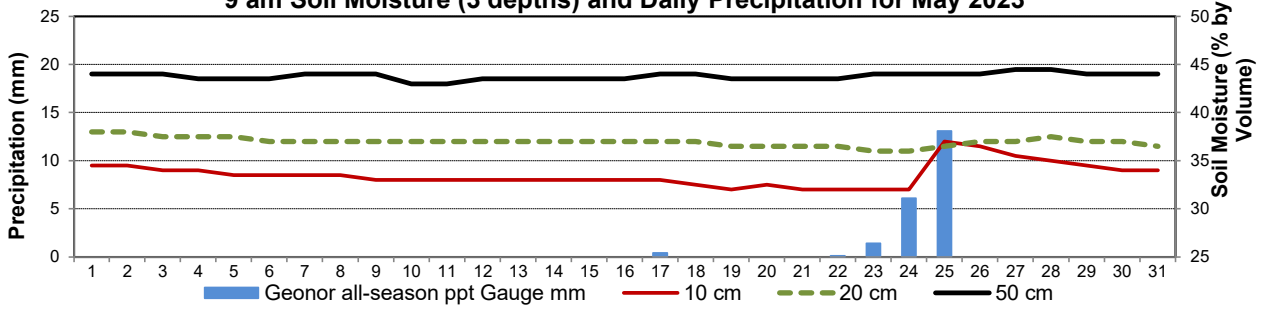
Spring Temperature (2012 to 2023)

Spring Precipitation (2012 to 2023)

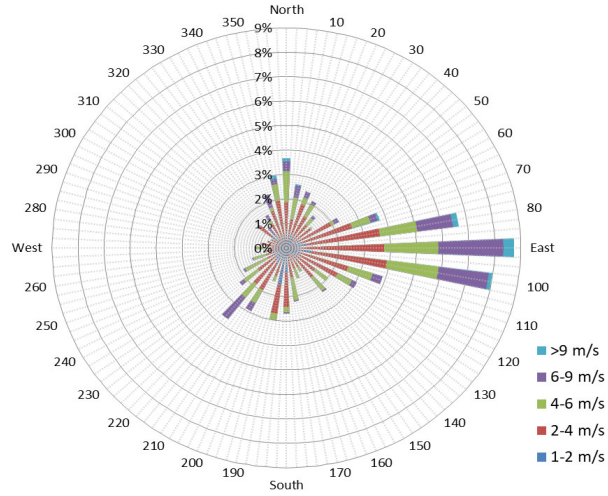
SRC proudly recognizes the following CRS supporters:



9 am Soil Moisture (3 depths) and Daily Precipitation for May 2023



10 minute Average Wind Speed and Direction CLC May 2023



1/2 hr Maximum Wind Speed and Direction CLC May 2023

