



SRC CLIMATE REFERENCE STATION DAILY DATA REPORT

CONSERVATION LEARNING CENTRE

Saskatchewan 53.03°N 105.77°W 451m asl Estab. 2011

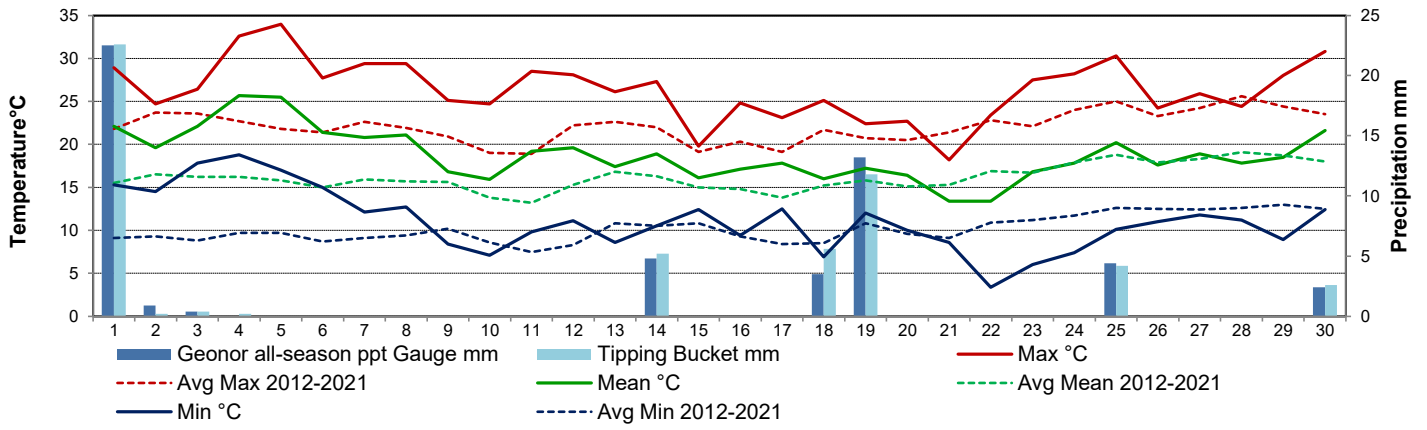
Preliminary **June 2023**

Day	Temperature						Degree-days			Precipitation			Relative Humidity		Station Pressure <i>corrected to sea level</i>	
	Max	Avg Max	Min	Avg Min	Mean	Avg Mean	Growing	Heating	Cooling	Geonor all-season ppt Gauge	Tipping Bucket	Notes	Max ½ hr Avg	Min ½ hr Avg	Max ½ hr Avg	Min ½ hr Avg
	°C	2012-2021	°C	2012-2021	°C	2012-2021	5°C base	18°C base	18°C base	mm	mm		%	%	mbar	mbar
1	28.9	21.8	15.3	9.1	22.1	15.5	17.1	0.0	4.1	22.5	22.6		99	41	1013	1009
2	24.7	23.7	14.5	9.3	19.6	16.5	14.6	0.0	1.6	0.9	0.2		100	65	1016	1011
3	26.4	23.6	17.8	8.8	22.1	16.2	17.1	0.0	4.1	0.4	0.4		98	67	1017	1015
4	32.6	22.7	18.8	9.7	25.7	16.2	20.7	0.0	7.7	0.0	0.2		99	44	1017	1014
5	34.0	21.8	17.0	9.7	25.5	15.8	20.5	0.0	7.5	0.0	0.0		99	36	1015	1010
6	27.7	21.4	15.0	8.7	21.4	15.0	16.4	0.0	3.4	0.0	0.0		97	54	1012	1010
7	29.4	22.6	12.1	9.1	20.8	15.9	15.8	0.0	2.8	0.0	0.0		97	32	1013	1011
8	29.4	21.9	12.7	9.4	21.1	15.7	16.1	0.0	3.1	0.0	0.0		96	36	1016	1011
9	25.1	20.9	8.4	10.2	16.8	15.6	11.8	1.2	0.0	0.0	0.0		98	34	1019	1016
10	24.7	19.0	7.1	8.6	15.9	13.8	10.9	2.1	0.0	0.0	0.0		100	36	1020	1016
11	28.5	18.9	9.8	7.5	19.2	13.2	14.2	0.0	1.2	0.0	0.0		89	30	1016	1011
12	28.1	22.2	11.1	8.3	19.6	15.3	14.6	0.0	1.6	0.0	0.0		98	38	1011	1010
13	26.1	22.6	8.6	10.8	17.4	16.8	12.4	0.6	0.0	0.0	0.0		97	37	1011	1006
14	27.3	22.0	10.5	10.5	18.9	16.3	13.9	0.0	0.9	4.8	5.2		94	51	1005	999
15	19.8	19.1	12.4	10.8	16.1	15.0	11.1	1.9	0.0	0.0	0.0		95	63	1009	1001
16	24.8	20.3	9.4	9.3	17.1	14.8	12.1	0.9	0.0	0.0	0.0		93	33	1014	1006
17	23.1	19.1	12.5	8.4	17.8	13.8	12.8	0.2	0.0	0.0	0.0		88	37	1006	1003
18	25.1	21.7	6.9	8.5	16.0	15.2	11.0	2.0	0.0	3.5	5.6		100	49	1004	997
19	22.4	20.7	12.0	10.8	17.2	15.8	12.2	0.8	0.0	13.2	11.8		97	30	1004	996
20	22.7	20.5	10.0	9.6	16.4	15.1	11.4	1.6	0.0	0.0	0.0		90	43	1011	1004
21	18.2	21.4	8.6	9.1	13.4	15.3	8.4	4.6	0.0	0.0	0.0		94	47	1016	1011
22	23.4	22.8	3.4	10.9	13.4	16.9	8.4	4.6	0.0	0.0	0.0		99	32	1017	1014
23	27.5	22.1	6.0	11.2	16.8	16.7	11.8	1.2	0.0	0.0	0.0		100	31	1015	1013
24	28.2	24.0	7.4	11.7	17.8	17.9	12.8	0.2	0.0	0.0	0.0		99	32	1015	1012
25	30.3	25.0	10.1	12.6	20.2	18.8	15.2	0.0	2.2	4.4	4.2		94	34	1014	1010
26	24.2	23.3	11.0	12.5	17.6	17.9	12.6	0.4	0.0	0.0	0.0		97	62	1014	1009
27	25.9	24.2	11.8	12.4	18.9	18.3	13.9	0.0	0.9	0.0	0.0		100	44	1009	1005
28	24.4	25.6	11.2	12.6	17.8	19.1	12.8	0.2	0.0	0.0	0.0		96	50	1012	1007
29	28.0	24.4	8.9	13.0	18.5	18.7	13.5	0.0	0.5	0.0	0.0		100	37	1014	1012
30	30.8	23.5	12.4	12.5	21.6	18.0	16.6	0.0	3.6	2.4	2.6		99	40	1013	1011
Total							412.7	22.5	45.2	52.1	52.8					
Avg	26.4	22.1	11.1	10.2	18.8	16.2	Monthly 2012 - 2021 Average			77.6	2012-2021 Average					
Extreme	34.0	34.7	3.4	2.0			334.8	74.0	18.8	113.3	2023 Cumulative ppt		100	30	1020	996
Date	5	2021	22	2021						177.3	Cumulative Average		2	11	10	19

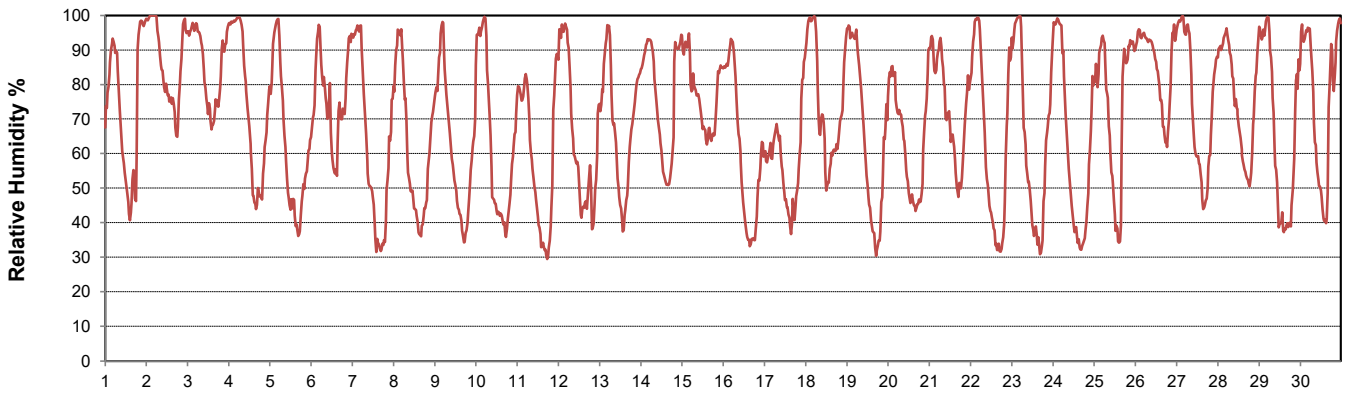
SRC proudly recognizes the following CRS supporters:



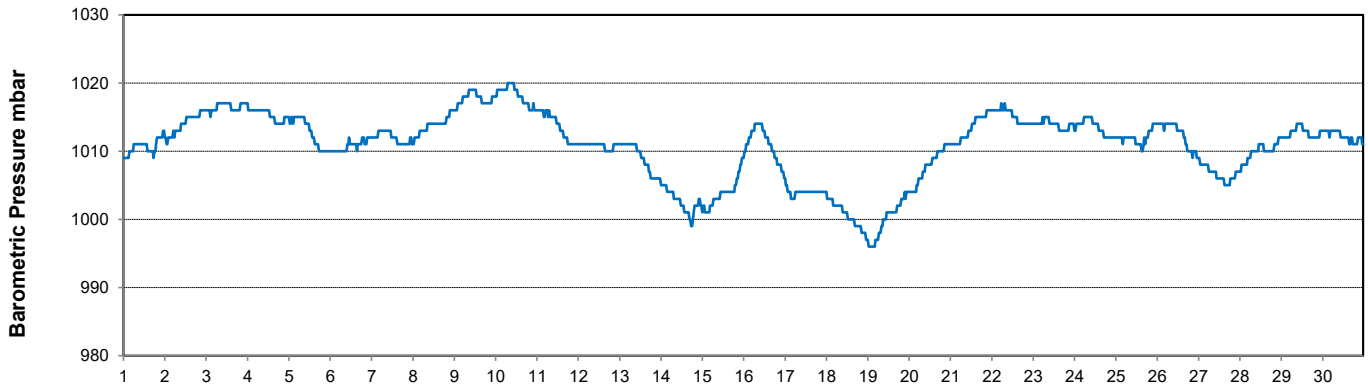
Temperature and Precipitation for June 2023



Relative Humidity for June 2023



Barometric Pressure Corrected to Sea Level for June 2023





SRC CLIMATE REFERENCE STATION DAILY DATA REPORT

CONSERVATION LEARNING CENTRE

Saskatchewan 53.03°N 105.77°W 451m asl Estab. 2011

Preliminary

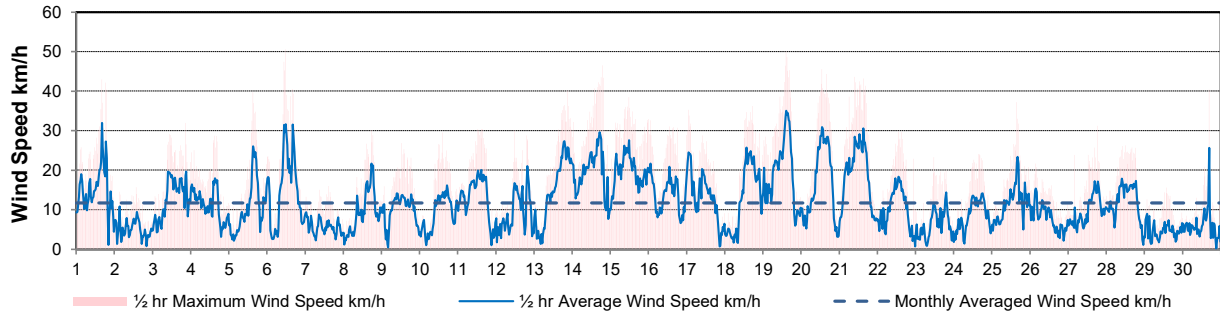
June 2023

Day	Wind Gust			Wind Speed (10 meters) Daily Average	Soil Temperatures at 0900hrs								Radiation				
	Max	Direction	Time		Surface	5 cm	10 cm	20 cm	50 cm	100 cm	150 cm	300 cm	Bright Sunshine	Possible	% Possible	Global	Diffuse
	km/h				°C	°C	°C	°C	°C	°C	°C	°C	hours	hours		MJ/m ²	MJ/m ²
1	42.9	E	16:23	15.1	21.0	14.5	15.0	13.0	10.5	6.5	4.5	3.5	9.0	16.6	54.2	21.7	8.6
2	15.7	S	13:48	4.8	19.0	15.0	15.5	13.5	11.0	7.0	4.5	3.5	9.0	16.6	54.2	17.6	11.8
3	31.9	N	20:50	13.0	19.5	16.0	16.0	14.0	11.5	7.0	5.0	3.5	3.8	16.7	22.8	14.9	9.8
4	28.7	SW	15:26	11.2	22.0	16.5	17.0	14.5	12.0	7.5	5.0	3.0	11.1	16.7	66.5	24.8	7.6
5	39.7	S	15:21	10.6	26.0	17.5	18.0	15.5	12.5	7.5	5.0	3.5	11.0	16.7	65.8	22.1	6.4
6	50.5	N	11:53	14.8	24.0	17.5	18.0	16.0	13.0	8.0	5.5	3.5	14.7	16.7	87.8	26.3	6.5
7	15.9	N	14:32	5.5	21.0	16.5	17.5	15.5	13.5	8.5	5.5	3.5	16.0	16.8	95.5	28.6	4.3
8	30.2	NNE	17:51	9.6	24.0	16.5	17.5	16.0	14.0	9.0	6.0	3.5	14.3	16.8	85.2	24.4	8.7
9	26.8	NE	12:58	9.9	17.5	15.5	17.0	15.5	14.0	9.0	6.0	3.5	15.1	16.8	89.8	25.2	9.0
10	29.5	S	14:51	9.0	17.5	15.0	16.0	15.0	14.0	9.5	6.0	3.5	13.9	16.8	82.6	27.1	7.9
11	30.4	SW	12:48	13.2	19.0	15.0	16.0	15.0	14.0	9.5	6.5	3.5	14.3	16.9	84.9	27.1	8.7
12	30.0	NE	11:52	9.3	21.0	15.5	16.5	15.0	14.0	9.5	6.5	3.5	9.2	16.9	54.5	19.5	11.9
13	40.1	ESE	21:28	14.9	16.5	15.0	16.5	15.0	14.0	9.5	7.0	3.5	12.1	16.9	71.7	21.6	11.8
14	46.5	SSW	19:29	19.4	17.0	15.5	16.5	15.0	14.0	10.0	7.0	3.5	10.4	16.9	61.6	24.5	9.0
15	38.4	S	11:35	19.5	15.0	16.0	17.0	15.5	14.0	9.5	7.0	3.5	7.2	16.9	42.6	15.9	10.1
16	32.9	NW	0:07	13.5	16.0	14.5	16.0	14.5	14.0	10.0	7.0	4.0	14.4	16.9	85.1	28.3	6.4
17	35.2	SSE	1:14	13.4	19.0	15.5	16.5	15.0	14.0	10.0	7.5	4.0	10.5	16.9	62.1	22.0	12.2
18	36.3	E	17:51	13.2	19.0	14.5	16.0	15.0	14.0	10.0	7.5	4.0	10.7	16.9	63.2	22.5	10.1
19	50.0	SSW	14:59	19.7	15.5	15.5	17.0	15.0	14.0	10.0	7.5	4.0	14.7	16.9	86.8	28.5	5.4
20	45.5	SW	13:27	16.1	16.0	14.5	16.0	15.0	14.0	10.5	7.5	4.0	14.9	16.9	88.0	29.8	5.0
21	43.6	WSW	9:49	18.8	14.0	14.5	15.5	14.5	14.0	10.5	8.0	4.0	8.9	16.9	52.5	19.0	9.6
22	29.7	WSW	13:07	10.3	16.0	13.0	14.5	14.0	13.5	10.5	8.0	4.0	14.8	16.9	87.4	29.2	6.2
23	23.3	ENE	11:38	6.2	17.5	13.5	15.0	14.0	13.5	10.5	8.0	4.5	13.4	16.9	79.1	25.9	6.5
24	24.1	WSW	15:31	8.6	19.5	14.0	15.5	14.5	13.5	10.5	8.0	4.5	15.1	16.9	89.2	27.6	5.9
25	37.2	NNE	15:51	11.7	20.0	15.0	16.0	15.0	14.0	10.5	8.0	4.5	10.0	16.9	59.1	23.5	6.9
26	21.6	NE	3:54	7.9	14.5	15.0	16.5	15.0	14.0	10.5	8.5	4.5	7.1	16.9	42.0	18.9	9.7
27	31.2	NNW	18:42	9.5	18.5	15.5	16.5	15.0	14.0	10.5	8.5	4.5	11.6	16.9	68.6	25.2	7.0
28	26.2	N	12:13	11.9	16.5	15.5	17.0	15.5	14.0	11.0	8.5	4.5	10.6	16.9	62.8	21.7	10.1
29	15.6	W	13:32	4.9	19.0	15.0	16.5	15.0	14.5	11.0	8.5	4.5	15.0	16.9	88.9	26.5	7.0
30	40.4	WNW	16:39	5.8	21.5	16.0	17.0	15.5	14.5	11.0	8.5	5.0	11.2	16.9	66.4	20.7	8.9
Total													354.0	505.3	70.1	710.6	249.0
Mean					18.8	15.3	16.4	14.9	13.5	9.5	6.9	3.9					
Extreme Date	50.5	N	11:53														

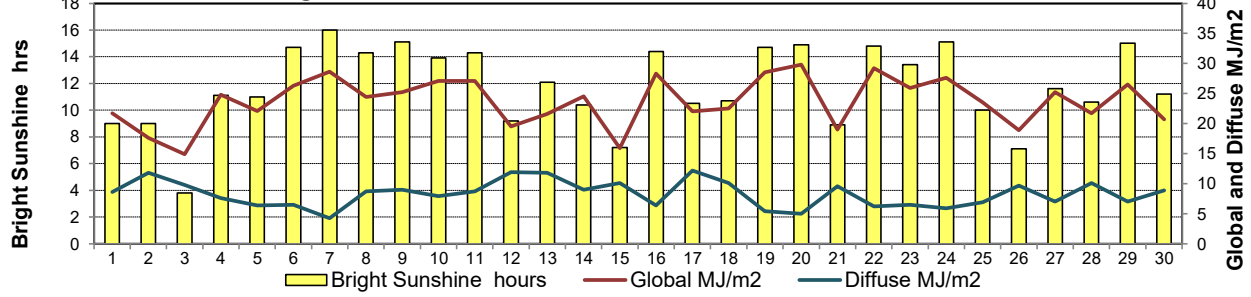
GLOSSARY OF TERMS

Degree-days	Radiation
Tm Mean Temperature	Bright Sunshine is the unobstructed direct radiation from the sun, as opposed to the shading of a location by clouds or by other atmospheric obstructions.
Growing (Tm-5°C); if Tm ≤ 5°C then GDD = 0	
Heating (18°C-Tm); if Tm ≥ 18°C then HDD = 0	Diffuse is radiation reaching the earth's surface after having been scattered from the direct solar beam
Cooling (Tm-18°C); if Tm ≤ 18°C then CDD = 0	Global is the sum of the direct solar and diffuse radiation
T Trace of Precipitation	Relative Humidity The ratio of the air's water vapour content to its water vapour capacity which changes with temperature.
SOG Depth of snow-on-the-ground	
Red Cell no data available	Air Pressure The force exerted by the weight of a column of air above a given point
Red Number manual calculation	Wind Gust The daily highest instantaneous value recorded irrespective of direction and/or duration

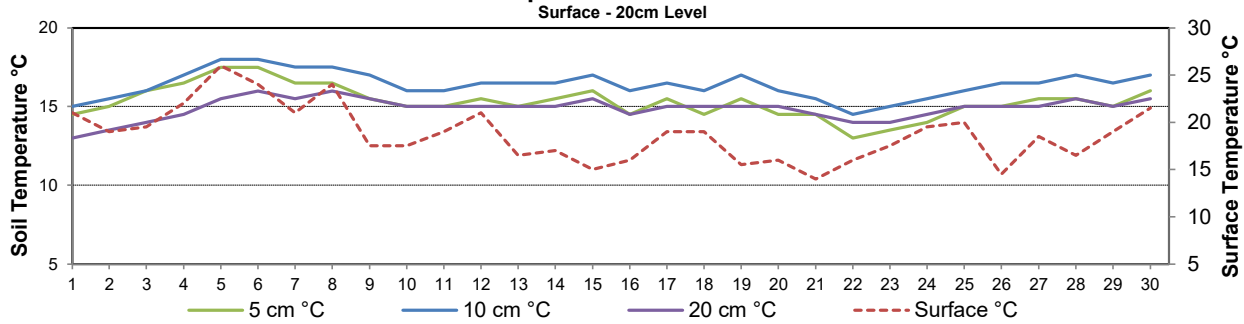
Wind Speed for June 2023



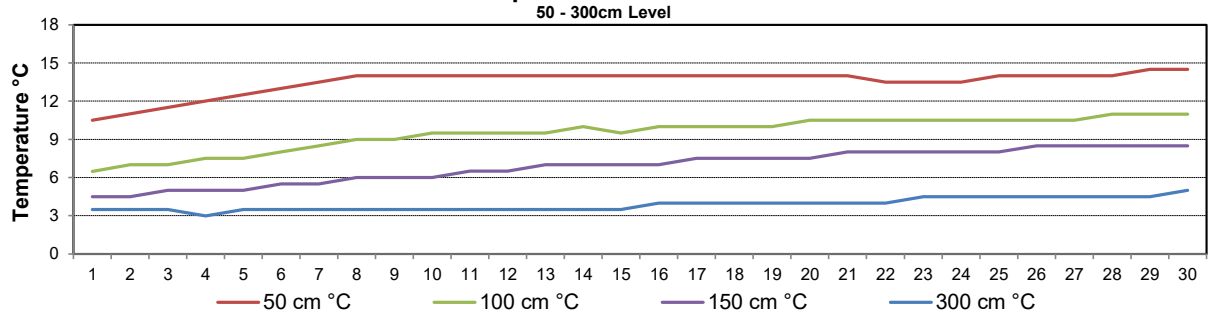
Bright Sunshine, Global and Diffuse Radiation for June 2023



Soil Temperatures for June 2023



Soil Temperatures for June 2023





SRC CLIMATE REFERENCE STATION DAILY DATA REPORT

CONSERVATION LEARNING CENTRE

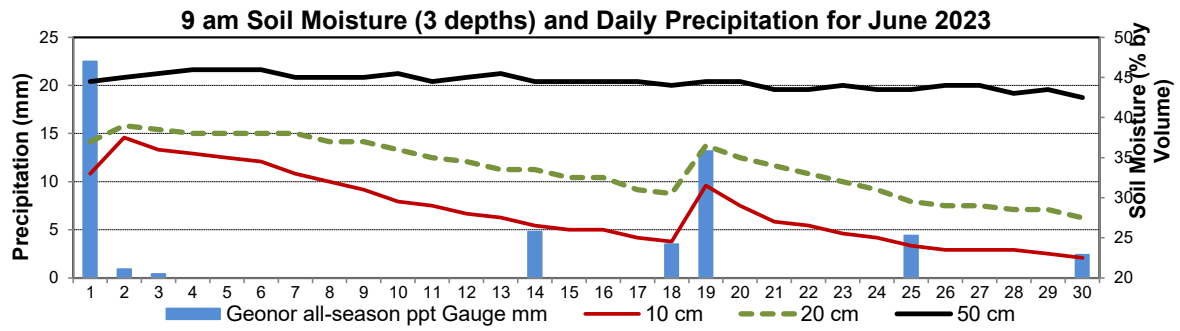
Saskatchewan 53.03°N 105.77°W 451m asl Estab. 2011

Preliminary **June 2023**

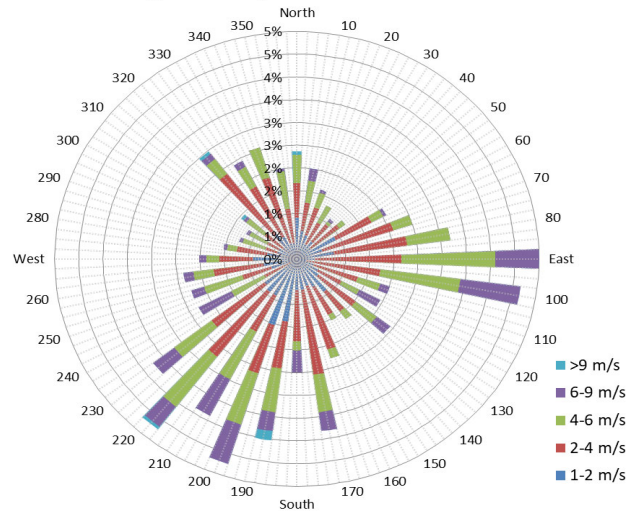
Day	2 meter Wind Speed			Soil Moisture at 0900 hrs (rounded to the 0.5%)									
	Daily Average	Max ½ hr Avg	½ hr Extreme Max	10 cm	20 cm	50 cm							
	km/h	km/h	km/h	% by volume (soil type is Clay Loam)									
1	11.0	25.2	34.8	33.0	37.0	44.5							
2	1.0	5.9	13.1	37.5	39.0	45.0							
3	8.0	15.7	23.3	36.0	38.5	45.5							
4	8.0	15.4	25.2	35.5	38.0	46.0							
5	5.0	19.7	29.5	35.0	38.0	46.0							
6	11.0	24.3	35.2	34.5	38.0	46.0							
7	3.0	7.8	14.3	33.0	38.0	45.0							
8	6.0	16.5	24.1	32.0	37.0	45.0							
9	6.0	11.7	23.5	31.0	37.0	45.0							
10	5.0	11.5	22.0	29.5	36.0	45.5							
11	8.0	16.0	25.0	29.0	35.0	44.5							
12	5.0	15.1	22.9	28.0	34.5	45.0							
13	10.0	20.6	30.0	27.5	33.5	45.5							
14	13.0	18.7	32.0	26.5	33.5	44.5							
15	15.0	20.7	29.3	26.0	32.5	44.5							
16	10.0	16.7	26.8	26.0	32.5	44.5							
17	10.0	17.4	25.6	25.0	31.0	44.5							
18	9.0	19.0	30.2	24.5	30.5	44.0							
19	14.0	26.0	36.6	31.5	36.5	44.5							
20	11.0	24.0	34.6	29.0	35.0	44.5							
21	13.0	22.5	33.9	27.0	34.0	43.5							
22	6.0	14.4	24.1	26.5	33.0	43.5							
23	3.0	10.5	17.0	25.5	32.0	44.0							
24	4.0	11.3	20.4	25.0	31.0	43.5							
25	7.0	16.6	27.2	24.0	29.5	43.5							
26	5.0	11.5	16.2	23.5	29.0	44.0							
27	4.0	12.3	20.6	23.5	29.0	44.0							
28	7.0	13.7	21.2	23.5	28.5	43.0							
29	1.0	5.5	12.6	23.0	28.5	43.5							
30	1.0	17.3	27.3	22.5	27.5	42.5							
Total													
Mean				29	34	44.5							
Extreme	15.0	26.0	36.6	37.5	39	46							
Date	0	0	0	0	0	0							

SRC proudly recognizes the following CRS supporters:





10 minute Average Wind Speed and Direction CLC June 2023



1/2 hr Maximum Wind Speed and Direction CLC June 2023

