



SRC CLIMATE REFERENCE STATION DAILY DATA REPORT CONSERVATION LEARNING CENTRE

Saskatchewan 53.03°N 105.77°W 451m asl Estab. 2011

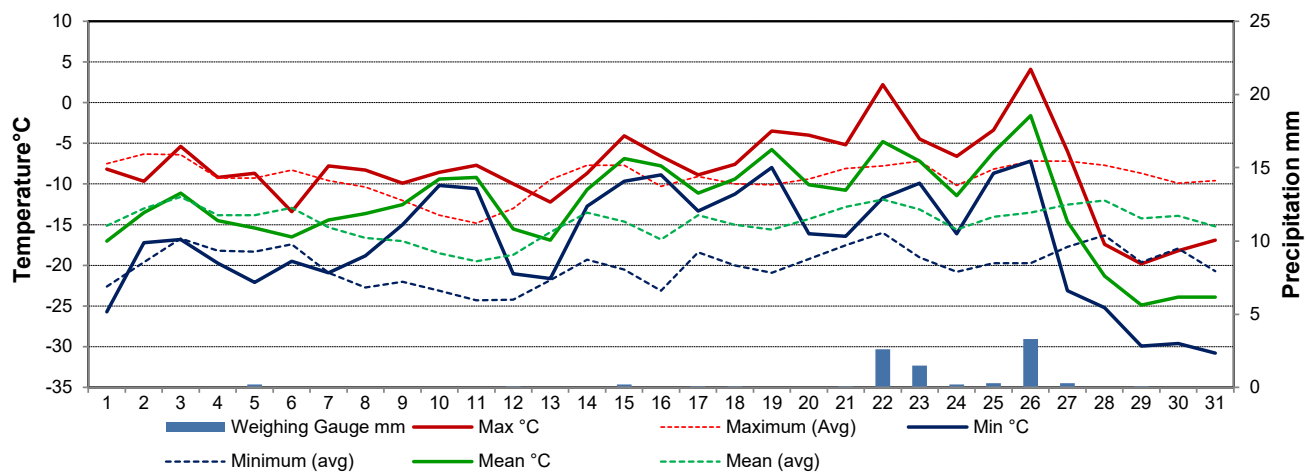
Preliminary **January 2023**

Day	Temperature						Degree-days			Precipitation			Relative Humidity		Station Pressure <i>corrected to sea level</i>	
	Max	Avg Max	Min	Avg Min	Mean	Avg Mean	Growing	Heating	Cooling	Weighing Gauge	Notes:	Snow-on-Ground 0900h	Max ½ hr Avg	Min ½ hr Avg	Max ½ hr Avg	Min ½ hr Avg
	°C	2012-2021	°C	2012-2021	°C	2012-2021	5°C base	18°C base	18°C base	mm		cm	%	%	mbar	mbar
1	-8.2	-7.5	-25.7	-22.6	-17.0	-15.1	0.0	35.0	0.0	0.0		24	96	84	1010	1006
2	-9.7	-6.3	-17.2	-19.6	-13.5	-13.0	0.0	31.5	0.0	0.0		22	94	88	1010	1009
3	-5.4	-6.4	-16.8	-16.7	-11.1	-11.6	0.0	29.1	0.0	0.0		23	95	74	1009	1007
4	-9.2	-9.3	-19.7	-18.2	-14.5	-13.8	0.0	32.5	0.0	0.0		23	94	84	1013	1008
5	-8.7	-9.3	-22.1	-18.3	-15.4	-13.8	0.0	33.4	0.0	0.2		23	93	89	1017	1012
6	-13.4	-8.3	-19.5	-17.4	-16.5	-12.9	0.0	34.5	0.0	0.0		23	91	87	1017	1011
7	-7.8	-9.6	-20.9	-20.9	-14.4	-15.3	0.0	32.4	0.0	0.0		23	92	79	1012	1010
8	-8.3	-10.4	-18.8	-22.7	-13.6	-16.6	0.0	31.6	0.0	0.0		23	94	74	1012	1007
9	-9.9	-12.0	-15.0	-22.0	-12.5	-17.0	0.0	30.5	0.0	0.0		23	95	88	1007	1004
10	-8.6	-13.8	-10.2	-23.1	-9.4	-18.5	0.0	27.4	0.0	0.0		23	96	95	1011	1005
11	-7.7	-14.8	-10.6	-24.3	-9.2	-19.5	0.0	27.2	0.0	0.0		23	96	93	1022	1011
12	-10.0	-13.0	-21.0	-24.2	-15.5	-18.7	0.0	33.5	0.0	0.1		23	95	88	1023	1016
13	-12.2	-9.5	-21.6	-21.8	-16.9	-15.9	0.0	34.9	0.0	0.0		24	94	84	1015	1007
14	-8.7	-7.7	-12.7	-19.3	-10.7	-13.5	0.0	28.7	0.0	0.0		24	96	92	1007	999
15	-4.1	-7.7	-9.7	-20.5	-6.9	-14.6	0.0	24.9	0.0	0.2		24	97	94	1006	1000
16	-6.6	-10.3	-8.9	-23.1	-7.8	-16.8	0.0	25.8	0.0	0.0		24	97	96	1011	1006
17	-8.9	-9.1	-13.3	-18.4	-11.1	-13.8	0.0	29.1	0.0	0.1		24	95	92	1013	1010
18	-7.6	-10.0	-11.2	-20.0	-9.4	-15.0	0.0	27.4	0.0	0.1		24	96	93	1013	1010
19	-3.5	-10.1	-8.0	-20.9	-5.8	-15.6	0.0	23.8	0.0	0.0		24	98	96	1014	1010
20	-4.0	-9.4	-16.1	-19.2	-10.1	-14.3	0.0	28.1	0.0	0.0		24	96	79	1015	1012
21	-5.2	-8.1	-16.4	-17.5	-10.8	-12.8	0.0	28.8	0.0	0.1		24	96	80	1012	1005
22	2.2	-7.8	-11.7	-16.0	-4.8	-11.9	0.0	22.8	0.0	2.6		25	99	78	1011	1002
23	-4.5	-7.2	-9.9	-19.0	-7.2	-13.1	0.0	25.2	0.0	1.5		24	94	78	1015	1008
24	-6.6	-10.2	-16.1	-20.8	-11.4	-15.6	0.0	29.4	0.0	0.2		26	95	85	1017	1008
25	-3.4	-8.2	-8.7	-19.7	-6.1	-14.0	0.0	24.1	0.0	0.3		26	97	83	1021	1015
26	4.1	-7.2	-7.2	-19.7	-1.6	-13.5	0.0	19.6	0.0	3.3		29	98	83	1016	994
27	-6.0	-7.2	-23.1	-17.7	-14.6	-12.5	0.0	32.6	0.0	0.3		23	87	60	1023	1007
28	-17.4	-7.7	-25.2	-16.3	-21.3	-12.0	0.0	39.3	0.0	0.0		22	83	68	1025	1022
29	-19.8	-8.7	-29.9	-19.6	-24.9	-14.2	0.0	42.9	0.0	0.1		21	83	65	1027	1019
30	-18.2	-9.9	-29.6	-17.9	-23.9	-13.9	0.0	41.9	0.0	0.0		21	87	71	1019	1013
31	-16.9	-9.6	-30.8	-20.7	-23.9	-15.2	0.0	41.9	0.0	0.0		21	88	67	1014	1013
Total							0.0	949.8	0.0	9.1			Extreme / Date	Extreme / Date	Extreme / Date	Extreme / Date
Avg	-8.2	-9.2	-17.0	-19.9	-12.6	-14.6	2012 - 2021 Average			17.9	2012-2021 Average					
Extreme	4.1	8.1	-30.8	-41.1			0.0	1011.6	0.0	9.1	Cumulative ppt		99	60	1027	994
Date	26	2014	31	2020						17.9	Cumulative Average		22	27	29	26

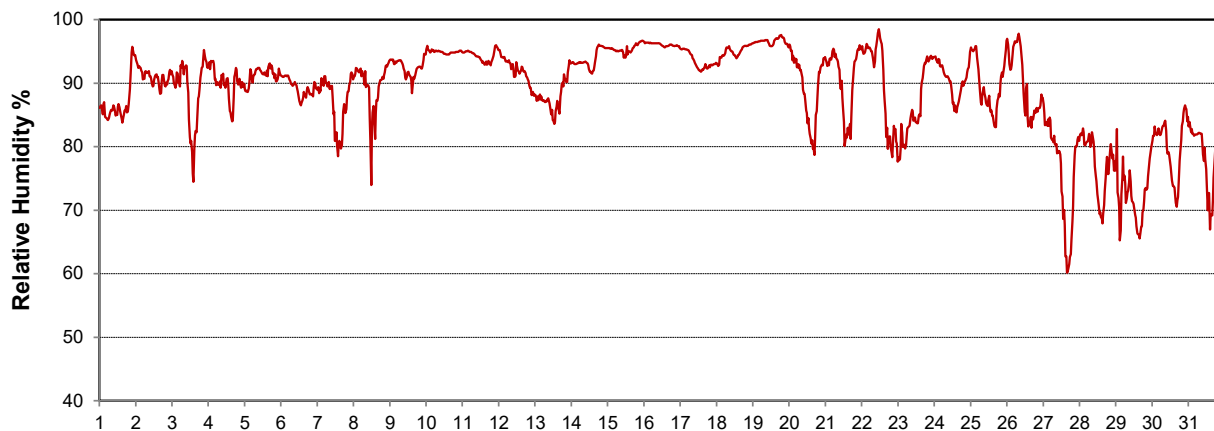
SRC proudly recognizes the following CRS supporters:



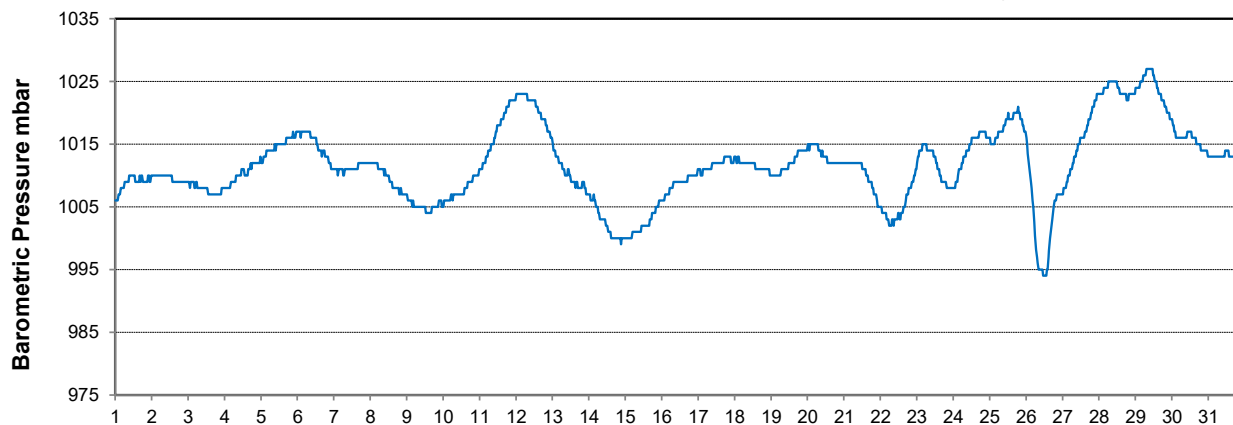
Temperature and Precipitation for January 2023



Relative Humidity for January 2023



Barometric Pressure Corrected to Sea Level for January 2023





SRC CLIMATE REFERENCE STATION DAILY DATA REPORT CONSERVATION LEARNING CENTRE

Saskatchewan 53.03°N 105.77°W 451m asl Estab. 2011

Preliminary

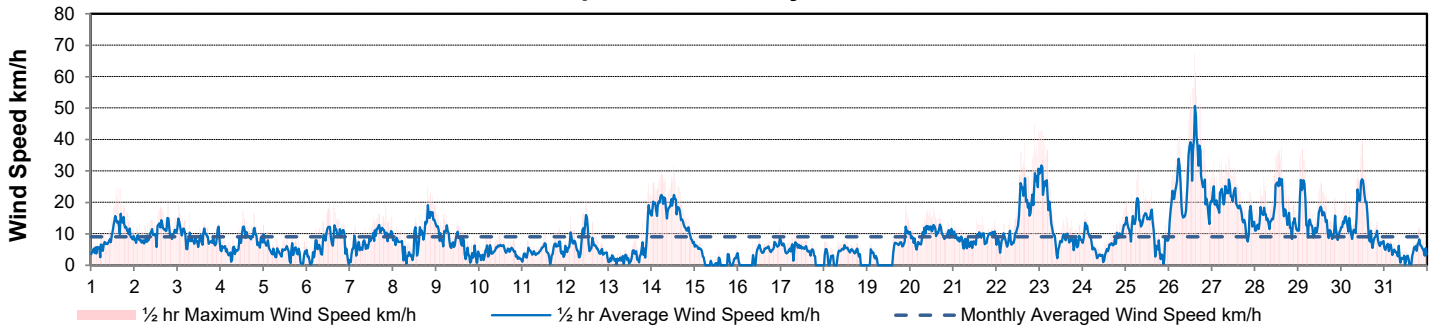
January 2023

Day	Wind Gust			Wind Speed (10 meters) Daily Average	Soil Temperatures at 0900hrs								Radiation				
	Max	Direction	Time		Surface	5 cm	10 cm	20 cm	50 cm	100 cm	150 cm	300 cm	Bright Sunshine	Possible	% Possible	Global	Diffuse
	km/h			km/h	°C	°C	°C	°C	°C	°C	°C	°C	hours	hours		MJ/m ²	MJ/m ²
1	24.6	W	14:12	9.1	-14.5	-2.0	-2.0	-1.5	-1.0	1.5	3.5	6.0	2.1	7.7	27.4	3.0	2.0
2	20.8	SSW	18:56	9.9	-11.0	-2.5	-2.0	-1.5	-1.0	1.5	3.5	6.0	6.4	7.7	83.1	4.8	1.8
3	19.2	SSW	0:59	9.0	-11.5	-2.0	-2.0	-1.5	-1.5	1.5	3.5	6.0	6.9	7.7	89.4	6.3	1.2
4	17.5	SW	12:57	7.1	-13.0	-2.5	-2.0	-1.5	-0.5	1.5	3.5	6.0	6.4	7.8	82.6	5.9	1.4
5	12.8	SSW	0:17	4.3	-11.0	-2.5	-2.0	-1.5	-1.0	1.5	3.0	6.0	0.0	7.8	0.0	2.2	1.9
6	19.7	SSE	13:12	7.0	-9.5	-2.5	-2.0	-1.5	-0.5	1.5	3.0	6.0	5.0	7.8	64.1	4.5	1.4
7	19.2	SW	20:27	8.3	-11.5	-2.5	-2.0	-1.5	-2.5	1.5	3.0	6.0	6.8	7.8	86.8	5.8	1.2
8	25.0	ESE	19:39	8.7	-11.5	-2.5	-2.0	-1.5	-4.5	1.5	3.0	6.0	4.6	7.9	58.5	4.5	2.0
9	17.4	E	0:26	6.9	-8.5	-2.5	-2.0	-1.5	-2.0	1.5	3.0	6.0	1.3	7.9	16.5	2.9	2.2
10	10.0	NE	13:56	4.3	-6.5	-2.0	-2.0	-1.5	-3.0	1.5	3.0	6.0	0.0	7.9	0.0	1.3	1.1
11	12.2	SW	20:56	4.4	-7.0	-2.0	-2.0	-1.5	-3.5	1.5	3.0	6.0	0.0	8.0	0.0	2.1	1.8
12	21.0	SSW	12:12	6.5	-9.0	-2.0	-2.0	-1.5	-3.0	1.5	3.0	5.5	0.1	8.0	1.2	2.0	1.7
13	25.9	E	22:48	4.1	-12.5	-2.0	-1.5	-1.5	-5.5	1.5	3.0	5.5	5.3	8.1	65.8	4.2	1.7
14	31.6	ENE	12:56	16.4	-9.0	-2.0	-2.0	-1.5	-4.0	1.5	3.0	5.5	0.0	8.1	0.0	1.6	1.3
15	8.9	NNE	1:36	1.7	-6.5	-2.0	-2.0	-1.5	-4.0	1.0	3.0	5.5	2.8	8.1	34.4	4.5	1.7
16	12.4	ESE	23:35	3.3	-5.5	-2.0	-2.0	-1.5	-2.5	1.0	2.5	5.5	0.0	8.2	0.0	1.9	1.6
17	10.9	ESE	0:08	4.2	-6.0	-1.5	-1.5	-1.0	-2.5	1.0	2.5	5.5	0.0	8.2	0.0	2.2	1.9
18	7.7	ESE	11:46	3.1	-6.5	-1.5	-1.5	-1.0	-3.5	1.0	2.5	5.5	0.0	8.3	0.0	1.7	1.4
19	19.3	WNW	21:50	3.7	-5.0	-1.5	-1.5	-1.0	-2.0	1.0	2.5	5.5	0.0	8.3	0.0	1.7	1.4
20	18.4	SW	13:25	9.9	-9.0	-1.5	-1.5	-1.0	-2.5	1.0	2.5	5.5	4.4	8.4	52.6	5.7	1.6
21	16.0	SW	16:40	8.4	-10.0	-1.5	-1.5	-1.0	-3.5	1.0	2.5	5.5	6.6	8.4	78.5	6.7	2.2
22	45.1	NNW	21:47	15.3	-4.5	-2.0	-1.5	-1.0	-2.5	1.0	2.5	5.5	0.0	8.5	0.0	2.6	2.5
23	42.8	NNW	1:41	12.5	-9.0	-1.5	-1.5	-1.0	-0.5	1.0	2.5	5.5	0.0	8.5	0.0	3.0	2.9
24	19.0	SW	23:59	7.1	-10.0	-1.5	-1.5	-1.0	-0.5	1.0	2.5	5.5	0.0	8.6	0.0	3.1	3.0
25	29.8	NNW	7:18	11.4	-5.0	-1.5	-1.5	-1.0	-2.0	1.0	2.5	5.0	0.9	8.6	10.4	3.3	3.1
26	67.2	NNW	14:30	26.4	-3.5	-1.5	-1.5	-1.0	-3.0	1.0	2.5	5.0	0.5	8.7	5.8	3.1	2.9
27	34.9	NNE	9:47	18.6	-13.5	-1.0	-1.5	-1.0	-4.5	1.0	2.5	5.0	5.2	8.7	59.6	5.0	2.2
28	37.6	NNE	15:17	16.4	-21.0	-1.5	-1.5	-1.0	0.0	1.0	2.5	5.0	5.1	8.8	58.1	5.2	3.4
29	36.9	NNW	2:47	14.1	-25.5	-1.5	-1.5	-1.0	0.0	1.0	2.5	5.0	8.3	8.8	93.9	6.4	1.5
30	39.5	NNW	12:28	13.4	-23.0	-2.0	-2.0	-1.5	0.0	1.0	2.5	5.0	8.3	8.9	93.3	7.5	1.5
31	12.0	NW	19:55	4.0	-20.0	-2.5	-2.0	-1.5	0.0	1.0	2.5	5.0	5.5	9.0	61.4	6.3	2.3
Total													92.5	254.9	36.3	121.0	59.8
Mean				9.0	-10.6	-1.9	-1.8	-1.3	-2.2	1.2	2.8	5.6					
Extreme	67.2	NNW	14:30														
Date	26																

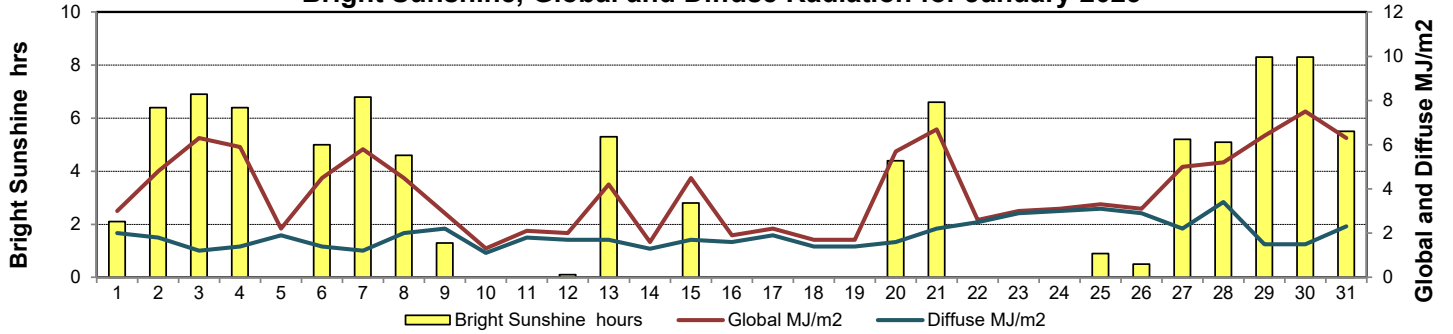
GLOSSARY OF TERMS

Degree-days	Radiation
T _m Mean Temperature	Bright Sunshine The unobstructed direct radiation from the sun, as opposed to the shading of a location by clouds or by other atmospheric obstructions.
Growing (T _m -5°C); if T _m ≤ 5°C then GDD = 0	Diffuse Radiation reaching the earth's surface after having been scattered from the direct solar beam
Heating (18°C-T _m); if T _m ≥ 18°C then HDD = 0	Global The sum of the direct solar and diffuse radiation
Cooling (T _m -18°C); if T _m ≤ 18°C then CDD = 0	Relative Humidity The ratio of the air's water vapour content to its water vapour capacity which changes with temperature.
T Trace of Precipitation	Air Pressure The force exerted by the weight of a column of air above a given point
SOG Depth of snow-on-the-ground	Wind Gust The daily highest instantaneous value recorded irrespective of direction and/or duration
Red Cell No data available	
Red Number Manual calculation	

Wind Speed for January 2023

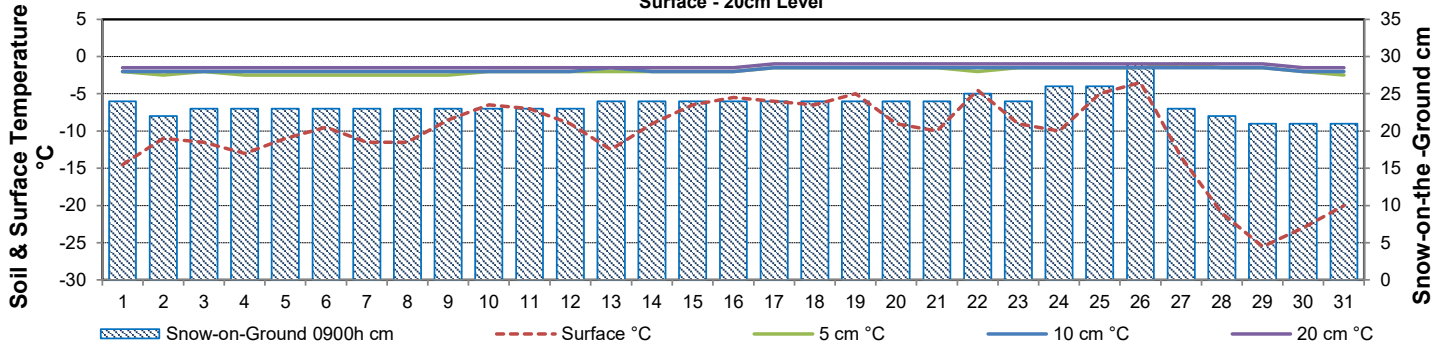


Bright Sunshine, Global and Diffuse Radiation for January 2023



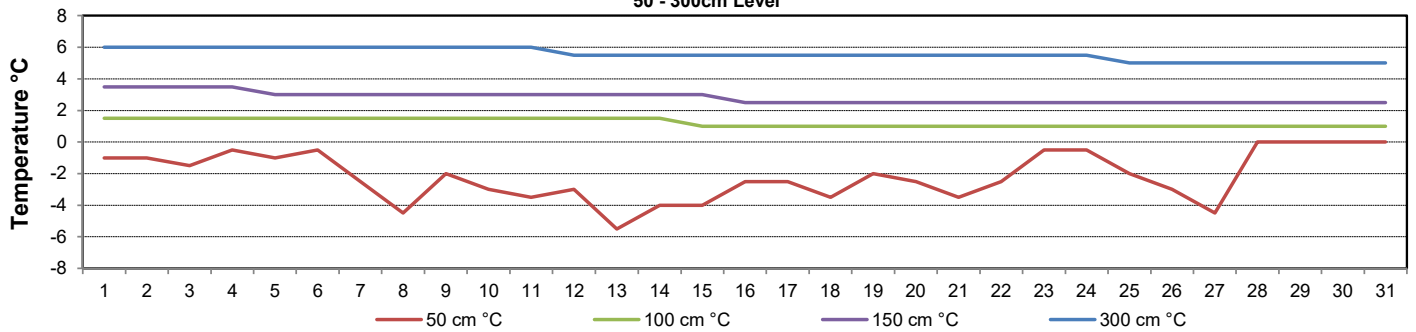
Soil Temperatures for January 2023

Surface - 20cm Level



Soil Temperatures for January 2023

50 - 300cm Level





SRC CLIMATE REFERENCE STATION DAILY DATA REPORT

CONSERVATION LEARNING CENTRE

Saskatchewan 53.03°N 105.77°W 451m asl Estab. 2011

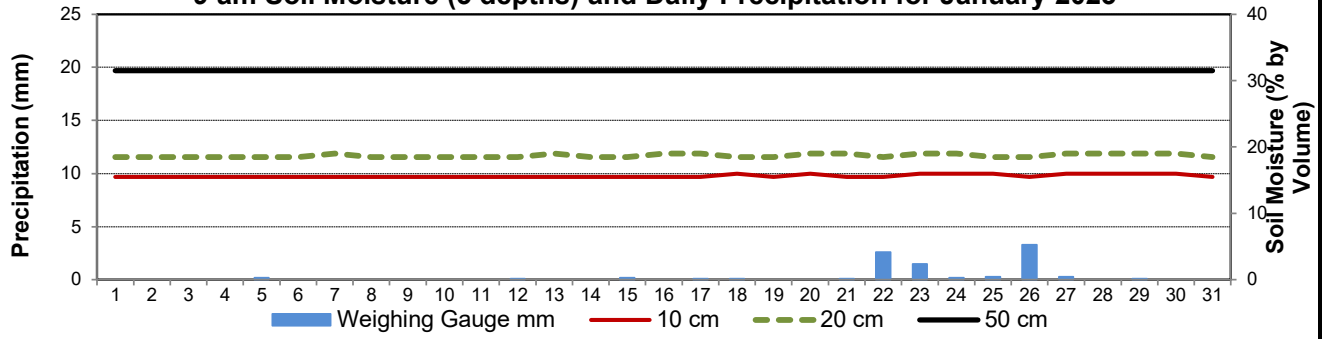
Preliminary **January 2023**

Day	2 meter Wind Speed			Soil Moisture at 0900 hrs (rounded to the 0.5%)																		
	Daily Average	Max ½ hr Avg	½ hr Extreme Max	10 cm	20 cm	50 cm																
	km/h	km/h	km/h	% by volume (soil type is Clay Loam)																		
1	6.0	14.4	20.6	15.5	18.5	31.5																
2	7.0	13.0	17.9	15.5	18.5	31.5																
3	6.0	11.3	15.8	15.5	18.5	31.5																
4	4.0	9.6	14.7	15.5	18.5	31.5																
5	2.0	7.6	9.5	15.5	18.5	31.5																
6	4.0	9.1	13.7	15.5	18.5	31.5																
7	4.0	10.8	15.1	15.5	19.0	31.5																
8	7.0	16.3	21.0	15.5	18.5	31.5																
9	6.0	12.2	15.8	15.5	18.5	31.5																
10	4.0	6.7	11.8	15.5	18.5	31.5																
11	4.0	6.8	10.6	15.5	18.5	31.5																
12	4.0	13.4	17.9	15.5	18.5	31.5																
13	1.0	16.6	21.4	15.5	19.0	31.5																
14	14.0	19.1	25.8	15.5	18.5	31.5																
15	1.0	5.3	7.6	15.5	18.5	31.5																
16	3.0	5.5	7.9	15.5	19.0	31.5																
17	3.0	5.1	8.7	15.5	19.0	31.5																
18	2.0	3.9	5.4	16.0	18.5	31.5																
19	3.0	6.8	10.1	15.5	18.5	31.5																
20	6.0	10.6	12.9	16.0	19.0	31.5																
21	4.0	9.2	14.1	15.5	19.0	31.5																
22	12.0	24.0	35.2	15.5	18.5	31.5																
23	10.0	24.9	34.8	16.0	19.0	31.5																
24	5.0	11.9	15.6	16.0	19.0	31.5																
25	10.0	17.3	23.1	16.0	18.5	31.5																
26	22.0	41.2	55.6	15.5	18.5	31.5																
27	15.0	22.3	30.2	16.0	19.0	31.5																
28	13.0	22.2	31.0	16.0	19.0	31.5																
29	11.0	21.5	28.9	16.0	19.0	31.5																
30	11.0	22.2	31.6	16.0	19.0	31.5																
31	3.0	3.0	10.0	15.5	18.5	31.5																
Total																						
Mean				16	19	31.5																
Extreme	22.0	41.2	55.6	16	19	31.5																

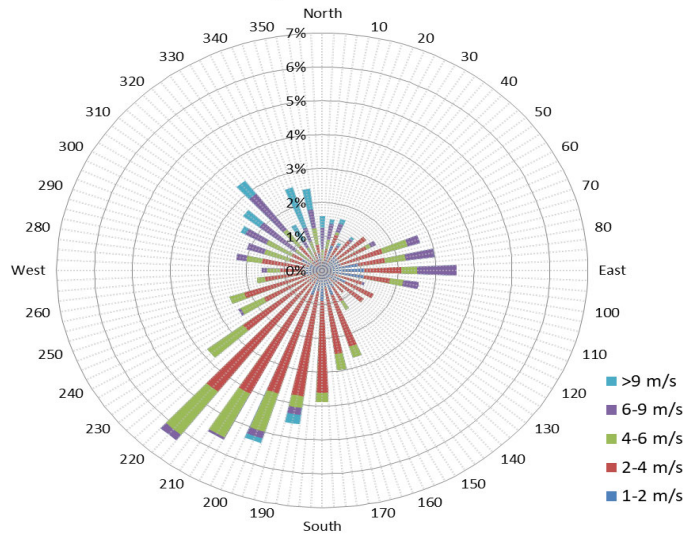
SRC proudly recognizes the following CRS supporters:



9 am Soil Moisture (3 depths) and Daily Precipitation for January 2023



1/2 hr Maximum Wind Speed and Direction CLC Jan 2023



10 minute Average Wind Speed and Direction CLC Jan 2023

