

# CT Scanning Services at SRC

› Pricing effective December 2018. Subject to change without notice.

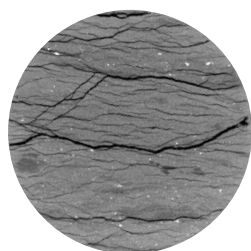
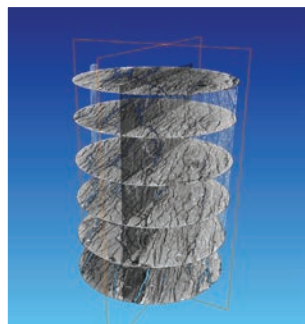
The Saskatchewan Research Council (SRC) has one of the first industrial-type computed-tomography (CT) scanners in Canada designed for petroleum research and development. It is equipped with both a 450-kV minifocus tube with powerful X-ray penetration, and a 225-kV microfocus tube with high resolution. It can continuously scan objects up to 77 cm tall and accommodate weights up to 110 kg.



## Core Plugs

### Basic Scan Data and Reporting

- 6 circular X-Y plane cross-sectional images along longitudinal core Z axis
- 2 orthogonal Z-X and Z-Y plane cross-sectional images along diameter (Scout Images)
- Data includes still picture images



1.5-inch-diameter argillaceous core with abundant fractures

Number of Plugs	Image Price per Plug	
	Standard	Enhanced
1	\$400	\$800
2-5	\$350	\$750
6-10	\$300	\$700
> 10	Volume Discounts	

Plug Size in Inches	Resolution in Microns	
	Standard	Enhanced
≤ 1.0	20-30	5-15
1.5	30-40	15-20
3.5	70-90	35-45
> 3.5	> 100	50-75

### Optional Image Viewing Capability

Video files showing 2-D images along 3 orthogonal planes – pixel by pixel

**Standard:** in file sizes (commonly < 20 MB) for e-mail transfer  
**Enhanced:** in file sizes that require an FTP service or flash/hard drive (additional charge)

Number of Plugs	Video Price per Plug	
	Standard	Enhanced
1-4	\$35	\$55
5-10	\$30	\$50
> 10	Volume Discounts	

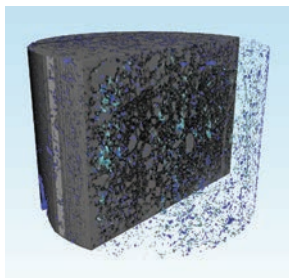
### Optional Image Viewing Capability – Interactive 3-D Data File

- Includes reconstructed 3-D geometry file and viewer software (if client requires) to generate movie files
- 3-D image file for each plug provided using an FTP service or flash/hard drive (additional charge)

Number of Plugs	Price per Plug
	<b>Standard or Enhanced</b>
1–4	\$80
5–10	\$75
> 10	Volume Discounts

### Optional Digital Image Analysis Using PerGeos™

- Includes phase segmentation based on scanning resolution and other complementary measurements (e.g., gas, liquid, light and heavy minerals)
- For batch processing of core plugs with same dimensions and lithology, at least one plug with experimentally measured fluid saturations and porosity is needed to calibrate segmentation and follow-up calculations (pricing is based on core sample)
- Only available for enhanced scanning images



Porosity

Analysis Type	Charge per Plug
Porosity	\$30
Permeability	\$50
Pore size distribution	\$40
Fluid saturation	\$80
Fracture characterization	Depends on requirements

Note: this analysis may not be applicable to all plug types, depending on plug and fluid properties, as well as image resolution

### Core Slabs

- Must be competent if not in a tube
- Tube must have low X-ray attenuation (i.e., plastic or aluminum)
- Typical core slab length is 75 cm



#### Basic Scan Data and Reporting

- 6 circular X-Y plane cross-sectional images along longitudinal core Z axis
- 2 orthogonal Z-X and Z-Y plane cross-sectional images along diameter
- Data includes still picture images

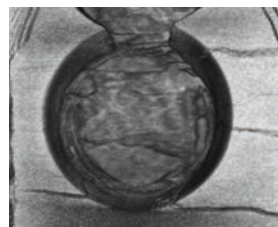
Image resolution: 70–90 microns

**Standard:** low signal/noise ratio, i.e., lower quality

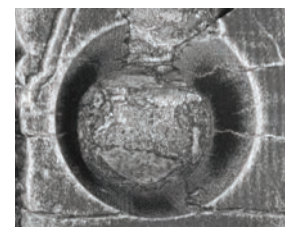
**Enhanced:** high signal/noise ratio, i.e., higher quality

Note: scanning time is subject to core slab quality and size

Number of Slabs	Image Price per Slab	
	Standard	Enhanced
1	\$800	\$1,300
2–5	\$750	\$1,225
6–10	\$725	\$1,175
> 10	Volume Discounts	



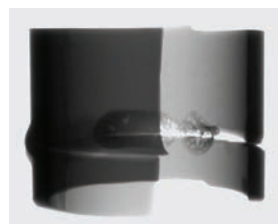
Standard (40-minute scan)



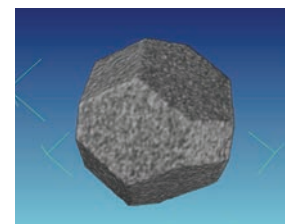
Enhanced (3-hour scan)

### Other Materials of Various Sizes, Irregular Geometry

- Including Non-Destructive Testing (NDT)
- Price based on scan time, quantity and techniques



Weld inspection



850-µm synthetic diamond