



SRC CLIMATE REFERENCE STATION DAILY DATA REPORT

SASKATOON STATION 4057180

Saskatchewan 52°09' N 106°36' W 497 m asl Estab. 1963

Preliminary

JULY 2018

Day	Temperature						Degree-days			Precipitation			Relative Humidity		Station Pressure (sea level)	
	Max	Normal Max	Min	Normal Min	Mean	Normal Mean	Growing	Heating	Cooling	Weighing Gauge	Tipping Bucket	Notes	Max ½ hr Avg	Min ½ hr Avg	Max ½ hr Avg	Min ½ hr Avg
	°C	1981-2010	°C	1981-2010	°C	1981-2010	5°C base	18°C base	18°C base	mm	mm		%	%	mbar	mbar
1	19.8	23.9	11.7	11.5	15.8	17.7	10.8	2.2	0.0	7.3	7.2	t-storm	90	55	1006	1004
2	22.8	24.4	10.1	11.6	16.5	18.1	11.5	1.5	0.0	0.0	0.0		87	36	1010	1006
3	20.6	24.2	10.6	10.9	15.6	17.6	10.6	2.4	0.0	2.1	2.6	t-storm	91	49	1015	1011
4	19.3	23.9	12.2	11.3	15.8	17.7	10.8	2.2	0.0	5.9	6.4	light rain	94	56	1024	1013
5	26.0	24.3	9.9	12.2	18.0	18.3	13.0	0.0	0.0	0.0	0.0		92	33	1028	1023
6	33.0	23.8	15.3	11.6	24.2	17.7	19.2	0.0	6.2	0.0	0.0		81	43	1023	1005
7	31.3	23.7	16.6	11.3	24.0	17.6	19.0	0.0	6.0	0.2	0.0		80	24	1012	1005
8	23.8	24.5	12.6	11.4	18.2	18.0	13.2	0.0	0.2	0.0	0.0		83	35	1020	1012
9	28.4	24.7	11.0	11.7	19.7	18.2	14.7	0.0	1.7	0.0	0.0		84	29	1021	1017
10	29.9	24.0	16.4	11.8	23.2	17.9	18.2	0.0	5.2	6.5	6.6	t-storm	86	51	1017	1006
11	25.0	24.7	14.7	11.8	19.9	18.3	14.9	0.0	1.9	19.3	18.8	rain	91	51	1011	1005
12	27.8	25.9	16.2	12.2	22.0	19.1	17.0	0.0	4.0	0.0	0.0		81	35	1015	1011
13	29.4	25.8	16.4	12.7	22.9	19.3	17.9	0.0	4.9	0.1	0.4		89	38	1016	1006
14	22.7	25.7	13.7	12.9	18.2	19.3	13.2	0.0	0.2	0.1	0.0		90	44	1018	1006
15	23.0	24.6	11.2	12.4	17.1	18.5	12.1	0.9	0.0	0.0	0.0		79	30	1018	1016
16	26.1	23.9	9.8	12.0	18.0	18.0	13.0	0.0	0.0	0.0	0.0		84	31	1020	1017
17	34.2	25.4	13.0	12.3	23.6	18.9	18.6	0.0	5.6	0.0	0.0		73	22	1020	1012
18	29.7	24.4	16.4	12.5	23.1	18.5	18.1	0.0	5.1	0.1	0.0		84	41	1012	1008
19	28.0	24.9	14.4	12.4	21.2	18.7	16.2	0.0	3.2	0.0	0.0		90	35	1015	1011
20	28.8	25.3	15.2	11.8	22.0	18.5	17.0	0.0	4.0	0.0	0.0		81	33	1015	1012
21	26.0	25.8	17.6	12.8	21.8	19.3	16.8	0.0	3.8	0.0	0.0		76	47	1013	1010
22	23.4	26.8	13.9	12.4	18.7	19.6	13.7	0.0	0.7	0.2	0.2	t-storm	84	41	1018	1010
23	22.6	25.9	12.0	12.7	17.3	19.3	12.3	0.7	0.0	0.0	0.0		81	39	1021	1018
24	22.7	26.4	10.0	12.0	16.4	19.2	11.4	1.6	0.0	0.0	0.0		88	39	1022	1020
25	22.0	26.3	11.2	12.1	16.6	19.2	11.6	1.4	0.0	0.0	0.0		88	40	1024	1021
26	23.3	27.2	9.2	12.4	16.3	19.8	11.3	1.7	0.0	0.0	0.0		89	40	1024	1022
27	24.7	26.4	12.6	12.7	18.7	19.6	13.7	0.0	0.7	0.0	0.0		82	33	1022	1020
28	28.7	26.1	14.0	12.4	21.4	19.3	16.4	0.0	3.4	0.0	0.0		80	22	1020	1018
29	29.9	26.8	12.6	12.1	21.3	19.5	16.3	0.0	3.3	0.0	0.0		82	22	1019	1018
30	33.4	26.2	15.6	12.8	24.5	19.5	19.5	0.0	6.5	0.0	0.0		79	19	1018	1012
31	23.9	25.7	14.1	12.2	19.0	19.0	14.0	0.0	1.0	0.1	0.0		87	25	1021	1016
Total							456.0	14.6	67.6	41.9	42.2		Extreme / Date	Extreme / Date	Extreme / Date	Extreme / Date
Avg	26.1	25.2	13.2	12.1	19.7	18.7	1981-2010 Normal			59.0	Normal					
Extreme Date	34.2		9.2				424.0	30.7	51.7	128.3	Cumulative		94	19	1028	1004
	17		26							226.5	Cumulative Normal		4	30	5	1

Note: Red numbers indicate manual calculation; Red cell indicate data not available

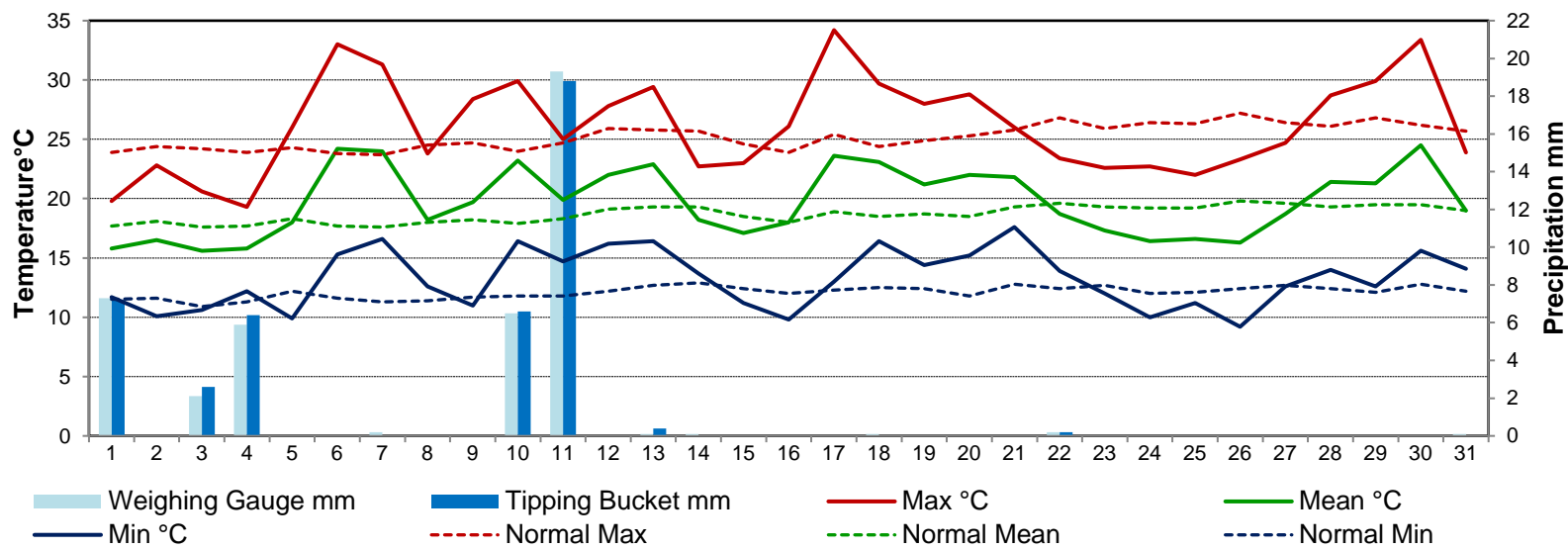
SRC proudly recognizes the following CRS supporters:



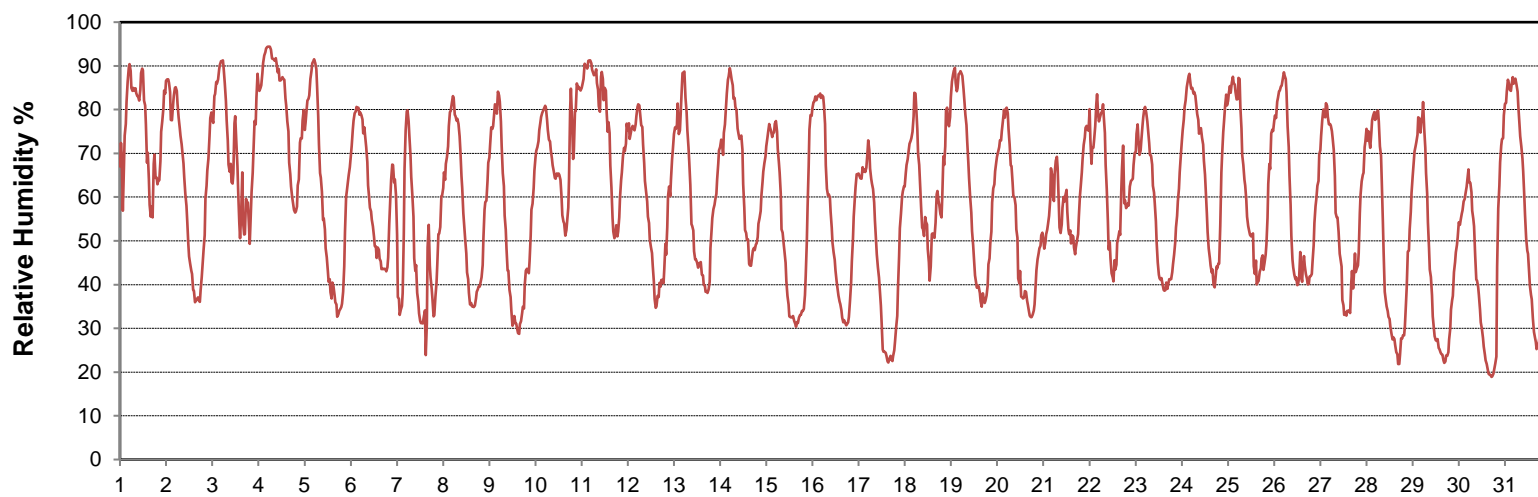
Agriculture and Agri-Food Canada / Agriculture et Agroalimentaire Canada



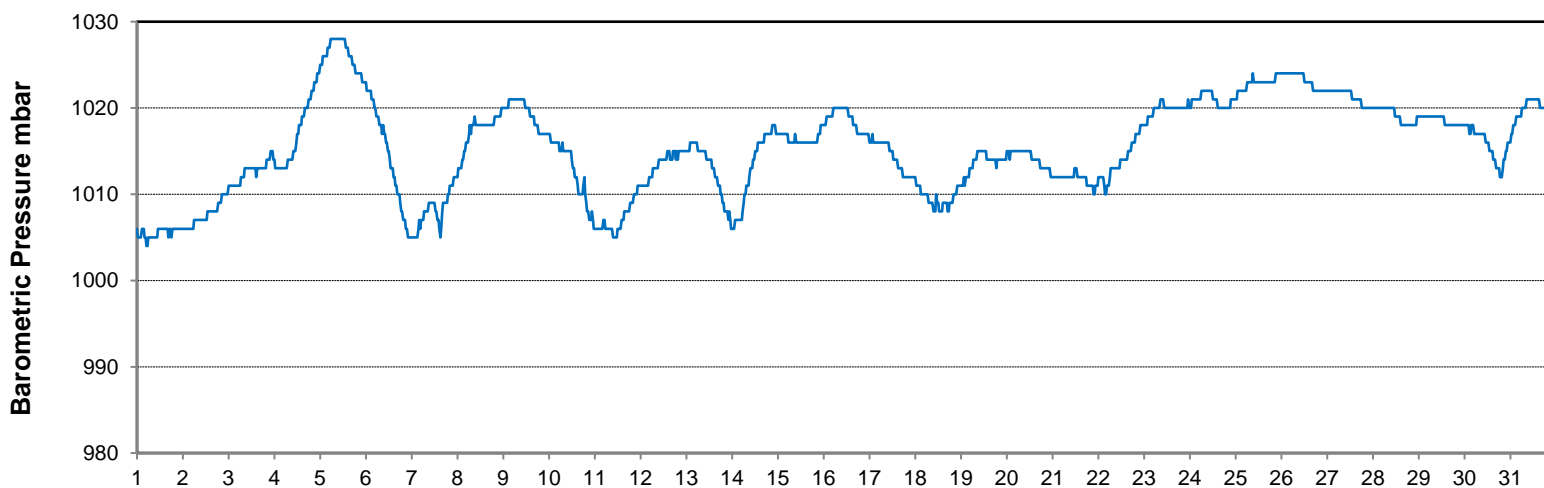
Temperature and Precipitation for July 2018



Relative Humidity for July 2018



Barometric Pressure Corrected to Sea Level for July 2018





SRC CLIMATE REFERENCE STATION DAILY DATA REPORT

SASKATOON STATION 4057180

Saskatchewan 52°09' N 106°36' W 497 m asl Estab. 1963

Preliminary

JULY 2018

Day	Wind Gust			Soil Temperatures at 0900hrs								Soil Moisture 30 cm 0900hrs %	Radiation				
	Max	Direction	Time	Surface	5 cm	10 cm	20 cm	50 cm	100 cm	150 cm	300 cm		Bright Sunshine	Possible	% Possible	Global	Diffuse
	km/h			°C	°C	°C	°C	°C	°C	°C	°C		hours	hours		MJ/m ²	MJ/m ²
1	50.9	WNW	17:26	14.0	18.0	19.0	19.0	17.5	12.5	10.5	7.0	12	3.9	16.7	23.4	11.3	5.7
2	45.0	SW	20:26	16.0	15.0	15.5	16.5	17.0	12.5	10.5	7.0	12	11.7	16.7	70.3	27.8	4.3
3	33.4	WSW	15:23	16.5	16.5	17.0	17.5	16.5	12.5	10.5	7.5	12	6.9	16.6	41.5	17.0	7.8
4	31.4	N	7:52	12.5	16.0	17.0	17.0	16.5	12.5	10.5	7.5	13	5.4	16.6	32.5	12.0	5.3
5	33.4	S	15:25	18.5	14.5	15.0	16.0	16.0	12.5	10.5	7.5	13	15.0	16.6	90.5	27.7	3.5
6	42.3	SSE	13:45	22.0	18.0	18.0	18.0	16.0	12.5	10.5	7.5	13	13.2	16.6	79.7	26.6	5.7
7	69.8	WNW	16:06	22.5	21.0	21.5	20.5	17.0	12.5	10.5	7.5	13	15.0	16.5	90.7	27.5	3.6
8	33.6	NNW	16:42	14.5	19.0	20.0	20.5	18.0	12.5	11.0	7.5	13	13.8	16.5	83.6	26.6	3.4
9	35.5	SE	17:47	21.5	18.5	19.5	20.0	18.0	12.5	11.0	8.0	12	13.0	16.5	78.9	24.2	7.5
10	31.0	ESE	11:25	22.5	20.5	21.0	20.5	18.0	13.0	11.0	8.0	12	10.1	16.4	61.4	20.4	5.1
11	59.5	WNW	13:39	17.5	19.5	20.0	20.5	18.5	13.0	11.0	8.0	16	7.0	16.4	42.7	14.1	7.2
12	36.1	WNW	23:31	21.0	18.5	18.5	19.0	18.0	13.0	11.0	8.0	16	14.2	16.4	86.7	27.7	3.4
13	35.1	SE	14:58	22.5	20.0	20.5	20.5	18.0	13.0	11.0	8.0	16	14.2	16.3	86.9	27.7	2.8
14	59.2	WNW	18:07	17.0	21.0	22.0	22.0	18.5	13.5	11.5	8.0	15	6.2	16.3	38.0	18.1	7.4
15	65.2	WNW	12:05	17.5	17.5	18.5	19.5	18.5	13.5	11.5	8.0	15	15.8	16.3	97.1	29.2	2.2
16	26.5	SSW	16:03	16.5	17.0	18.0	18.5	18.0	13.5	11.5	8.5	15	15.5	16.2	95.5	27.3	3.7
17	29.3	S	14:12	22.0	19.0	19.5	20.0	18.0	13.5	11.5	8.5	14	15.5	16.2	95.7	27.7	2.4
18	46.9	WSW	11:05	23.5	21.5	22.0	21.5	18.5	13.5	11.5	8.5	14	8.4	16.2	52.0	16.8	7.4
19	24.1	NNE	16:31	19.0	20.5	21.0	21.0	19.0	13.5	11.5	8.5	14	13.9	16.1	86.3	26.1	4.3
20	44.1	SE	17:21	22.5	21.0	21.5	21.5	19.5	14.0	12.0	8.5	14	11.2	16.1	69.7	22.4	6.7
21	59.6	SE	14:00	23.5	21.0	22.0	22.0	19.5	14.0	12.0	8.5	14	11.8	16.0	73.7	24.2	5.7
22	53.0	NW	16:46	18.0	20.5	21.5	21.5	19.5	14.0	12.0	8.5	13	8.5	16.0	53.2	20.1	5.9
23	58.9	NW	13:35	15.0	18.5	19.5	20.5	19.5	14.0	12.0	9.0	13	12.1	15.9	76.0	24.9	6.8
24	31.9	NW	15:46	15.0	18.5	19.0	20.0	19.0	14.5	12.0	9.0	13	4.8	15.9	30.2	17.3	7.5
25	32.9	NNE	17:25	16.5	18.0	19.0	19.5	18.5	14.5	12.0	9.0	13	9.3	15.8	58.7	17.6	7.2
26	23.4	SE	15:05	18.5	16.5	17.5	18.5	18.5	14.5	12.5	9.0	12	8.1	15.8	51.3	17.7	8.2
27	29.6	W	16:40	18.5	18.0	18.5	18.5	18.0	14.0	12.5	9.0	12	8.0	15.7	50.8	16.9	8.5
28	23.9	SW	15:37	21.0	18.0	18.5	19.0	18.0	14.0	12.5	9.0	12	10.9	15.7	69.5	24.1	6.1
29	30.7	WNW	13:35	22.0	18.5	19.5	20.0	18.5	14.0	12.5	9.0	12	13.1	15.6	83.8	23.8	5.3
30	52.6	NNE	20:15	22.5	20.0	20.5	21.0	18.5	14.0	12.5	9.0	12	12.8	15.6	82.2	22.0	7.1
31	35.3	N	0:10	17.5	21.0	21.5	21.5	19.0	14.5	12.5	9.5	12	11.1	15.5	71.5	23.0	5.4
Total													340.4	501.7	67.8	689.8	173.1
Mean				19.0	18.7	19.4	19.7	18.1	13.4	11.5	8.3	13	1981-2010 Normal for Radiation				
Extreme	69.8	WNW	16:06	1971-2000 Normal for Soil Temperatures									298.8	501.80	59.5	650.6	213.5
Date	7				17.5	18.0	18.9	16.7	13.1	10.9	7.5		No. of Bright Sunshine days = 31				

Note: Red numbers indicate manual calculation; Red cell indicate data not available

SRC proudly recognizes the following CRS supporters:



Agriculture and Agri-Food Canada

Agriculture et Agroalimentaire Canada

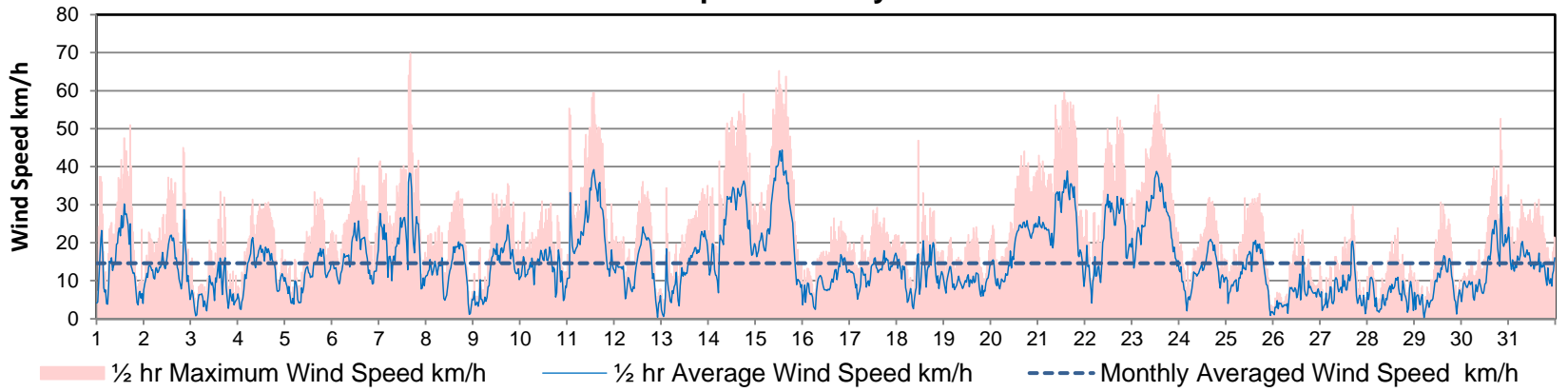


UNIVERSITY OF SASKATCHEWAN

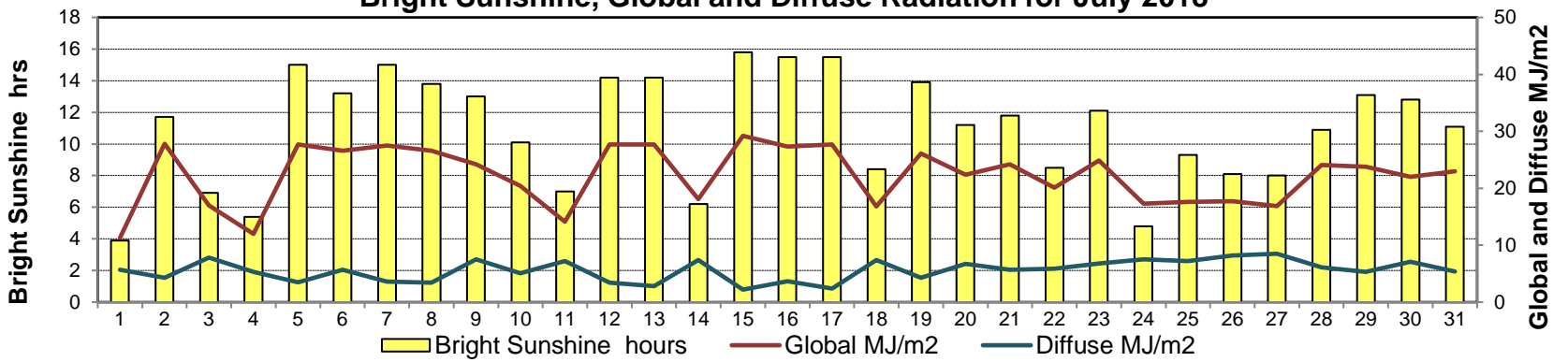


CAMPBELL SCIENTIFIC WHEN MEASUREMENTS MATTER

Wind Speed for July 2018

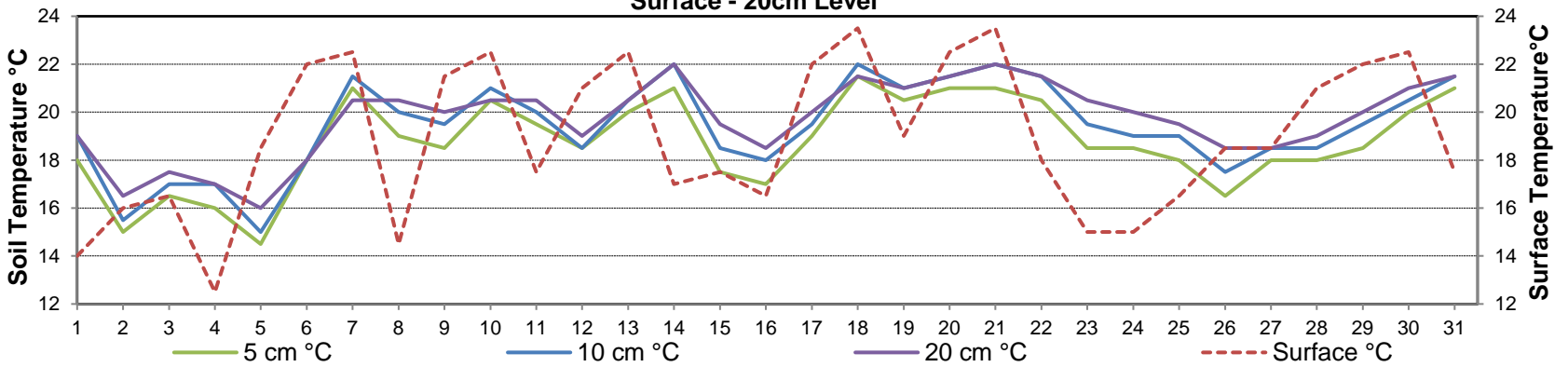


Bright Sunshine, Global and Diffuse Radiation for July 2018



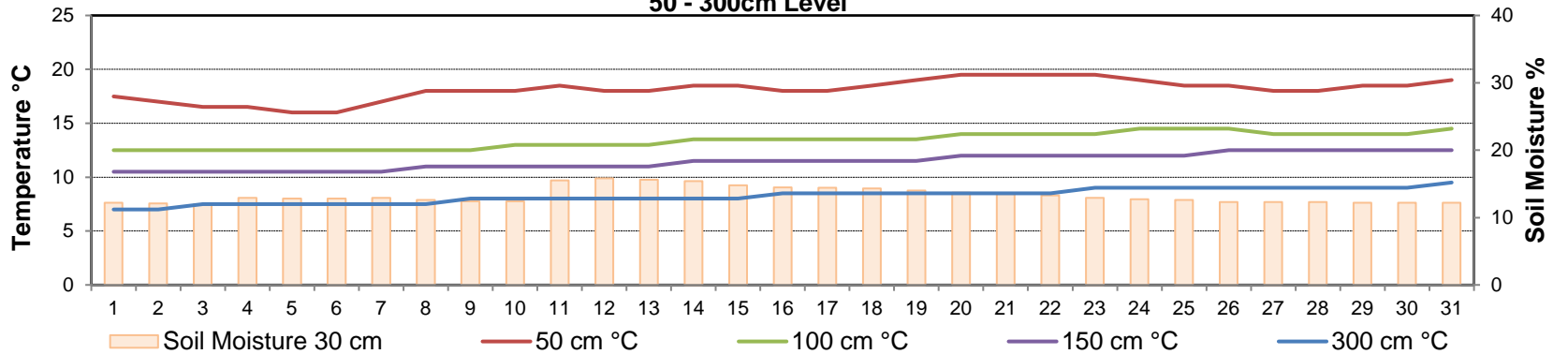
Soil Temperatures for July 2018

Surface - 20cm Level



Soil Temperatures for July 2018

50 - 300cm Level





SRC CLIMATE REFERENCE STATION DAILY DATA REPORT

SASKATOON STATION 4057180

52°09' N 106°36' W 497 m asl Estab. 1963

Preliminary **JULY 2018**

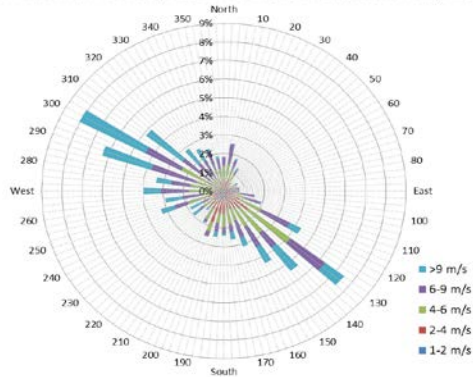
Extreme Records for July

Max/Min Temperature °C				Precipitation - Monthly mm				Wind Monthly km/h				CRS Bright Sunshine - Monthly			
S'toon Area	Date	Site	S'toon CRS Date	S'toon Area	Date	Site	S'toon CRS Date	S'toon Airport	Date	S'toon CRS**	Date	Hours	Year	No. of Days	Year
40.0	(1919,41)	1946 (SE SA) US	39.3 05/2001	162.9	1928 SE		125.9 1971					386.2	1974	31	1967*
-0.6	25/1918	SE	1.7 02.09/1967,78	0.0	1988 SC		13.0 1984	113 ^E	05/1955	160	1985	185.5	1998	27	2004

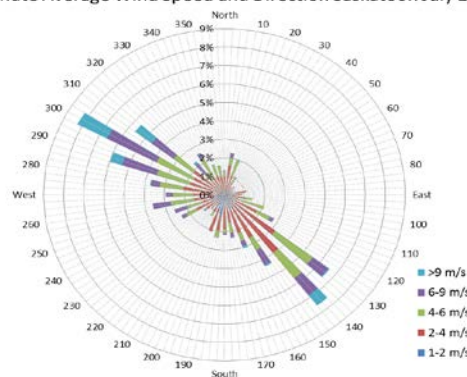
**1975 forward * more than one year

Notable Events for CRS Saskatoon - July						Saskatoon Area Stations			Glossary	
Element	Type	Day	New Record	Old Record	Year	SM	NWMP	c. 1892-1901	T	Trace of precipitation
Temperature	Highest Maximum Daily	6	33.0	31.3	2005	SE	Eby	1901-1941	Normal	30 year average beginning with the decade
Precipitation	Greatest Daily	11	19.3	15.7	1985	US	Univ. of Sask.	1915-1964	SOG	Depth of snow-on-the-ground in cm
						S	Saskatoon	1941-1942	na	not available
						SA	Saskatoon A	1942 -	Degree-days	
						NRC	Nat. Res. Council	1952-1966	Tm	Mean Temperature
						SRC	Sask. Res. Council	1963-	Growing	(Tm-5°C); if Tm ≤ 5°C then GDD = 0
						SWT	S'toon Water Treatment Plant	1974 -	Heating	(18°C-Tm); if Tm ≤ 18°C then HDD = 0
						SC	S'toon Central Ave	1974-1989	Cooling	(Tm-18°C); if Tm ≥ 18°C then CDD = 0
						S1	Saskatoon 1	1976-1978	Extreme Cooling	(Tm-24°C); if Tm ≥ 24°C then CDD = 0
						S2	Saskatoon 2	1977-1990		
						K	S'toon Kernen Farr	1993-2004		
						KCS	S'toon Kernen Farm CS	1996-		
						RCS	Environment Canada	2008-		
						SF	Sutherland Forestry	1943-1970		

1/2 hr Maximum Wind Speed and Direction Saskatoon July 2018



10 minute Average Wind Speed and Direction Saskatoon July 2018



SRC proudly recognizes the following CRS supporters:

