



SRC CLIMATE REFERENCE STATION DAILY DATA REPORT

CONSERVATION LEARNING CENTRE

Saskatchewan 53.03°N 105.77°W Estab. 2011

Preliminary **September 2018**

Day	Temperature			Degree-days			Precipitation			Relative Humidity		Station Pressure <i>corrected to sea level</i>	
	Max	Min	Mean	Growing	Heating	Cooling	Weighing Gauge	Tipping Bucket	Snow-on-Ground 0900h	Max ½ hr Avg	Min ½ hr Avg	Max ½ hr Avg	Min ½ hr Avg
	°C	°C	°C	5°C base	18°C base	18°C base	mm	mm	cm	%	%	mbar	mbar
1	15.5	7.8	11.7	6.7	6.3	0.0	2.7	3.0	-	96	71	1009	1003
2	18.6	5.2	11.9	6.9	6.1	0.0	0.0	0.4	-	96	38	1012	1010
3	18.6	2.9	10.8	5.8	7.2	0.0	1.7	1.4	-	100	53	1012	1007
4	11.4	0.0	5.7	0.7	12.3	0.0	0.0	0.2	-	100	52	1023	1012
5	20.3	-2.3	9.0	4.0	9.0	0.0	0.4	0.0	-	100	33	1024	1022
6	16.8	3.6	10.2	5.2	7.8	0.0	0.2	0.0	-	100	44	1027	1024
7	22.6	3.4	13.0	8.0	5.0	0.0	0.0	0.0	-	89	35	1026	1015
8	19.0	7.7	13.4	8.4	4.6	0.0	0.0	0.0	-	100	69	1015	1003
9	15.8	8.4	12.1	7.1	5.9	0.0	0.1	0.0	-	100	70	1011	1003
10	13.3	5.6	9.5	4.5	8.5	0.0	2.0	2.0	-	100	70	1012	1004
11	15.3	8.1	11.7	6.7	6.3	0.0	2.8	3.0	-	99	66	1013	1003
12	16.0	4.8	10.4	5.4	7.6	0.0	1.8	2.2	-	100	61	1013	1009
13	10.6	4.0	7.3	2.3	10.7	0.0	0.3	0.4	-	100	81	1017	1009
14	7.6	1.8	4.7	0.0	13.3	0.0	0.0	0.2	-	99	62	1025	1017
15	9.7	4.0	6.9	1.9	11.1	0.0	1.7	1.6	-	99	70	1025	1018
16	5.2	2.4	3.8	0.0	14.2	0.0	2.6	2.4	-	100	95	1018	1016
17	6.0	1.9	4.0	0.0	14.0	0.0	6.7	6.0	-	100	88	1019	1015
18	8.8	-0.8	4.0	0.0	14.0	0.0	0.0	0.0	-	100	67	1019	1017
19	14.3	-1.4	6.5	1.5	11.5	0.0	0.0	0.0	-	100	45	1021	1018
20	10.9	-0.1	5.4	0.4	12.6	0.0	1.0	0.6	-	100	80	1022	1017
21	5.3	-3.1	1.1	0.0	16.9	0.0	0.0	0.0	-	100	52	1023	1020
22	5.4	-5.6	-0.1	0.0	18.1	0.0	0.3	0.0	-	96	46	1023	1021
23	1.6	-2.0	-0.2	0.0	18.2	0.0	3.6	3.8	-	100	73	1022	1012
24	11.6	0.0	5.8	0.8	12.2	0.0	0.4	0.4	-	100	61	1012	1010
25	12.2	1.4	6.8	1.8	11.2	0.0	0.0	0.0	-	97	36	1015	1012
26	15.2	0.4	7.8	2.8	10.2	0.0	0.7	1.2	-	99	46	1014	1006
27	6.1	-2.0	2.1	0.0	15.9	0.0	0.3	0.0	-	96	55	1022	1014
28	6.3	-5.0	0.7	0.0	17.3	0.0	0.0	0.2	-	89	42	1023	1018
29	5.1	-3.5	0.8	0.0	17.2	0.0	0.0	0.0	-	80	47	1025	1016
30	4.8	-7.3	-1.3	0.0	19.3	0.0	0.0	0.0	-	97	40	1027	1020
Total				80.9	344.5	0.0	29.3	29					
Avg	11.7	1.3	6.5				303.7	Cumulative ppt					
Extreme	22.6	-7.3					6.7	6.0	0	100	33	1027	1003
Date	7	30					17	17		3	5	6	1

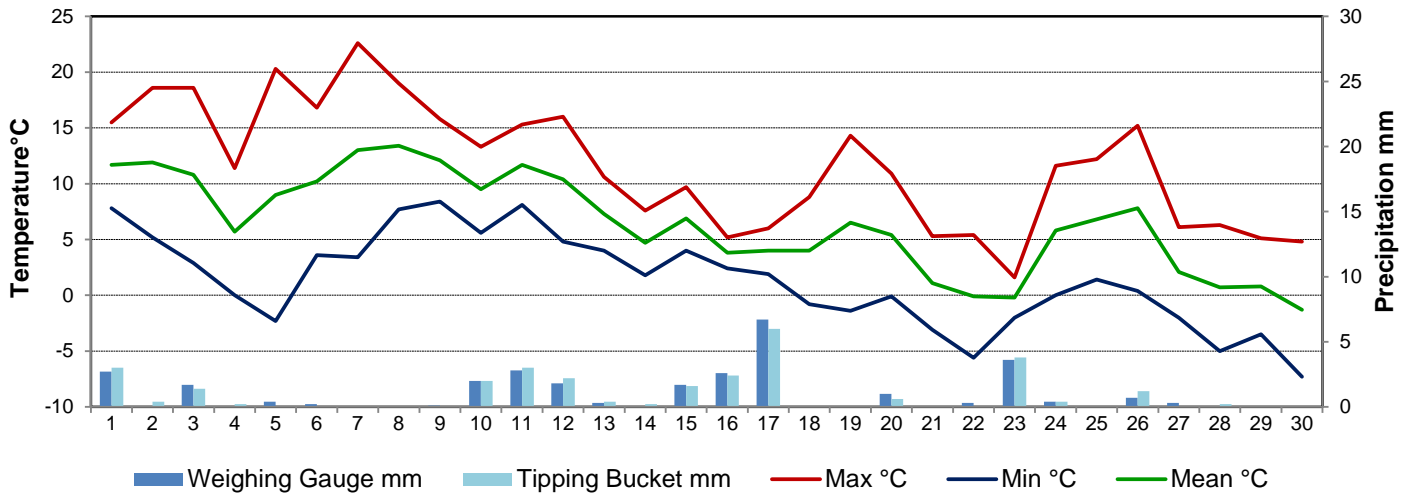
SRC proudly recognizes the following CRS supporters:



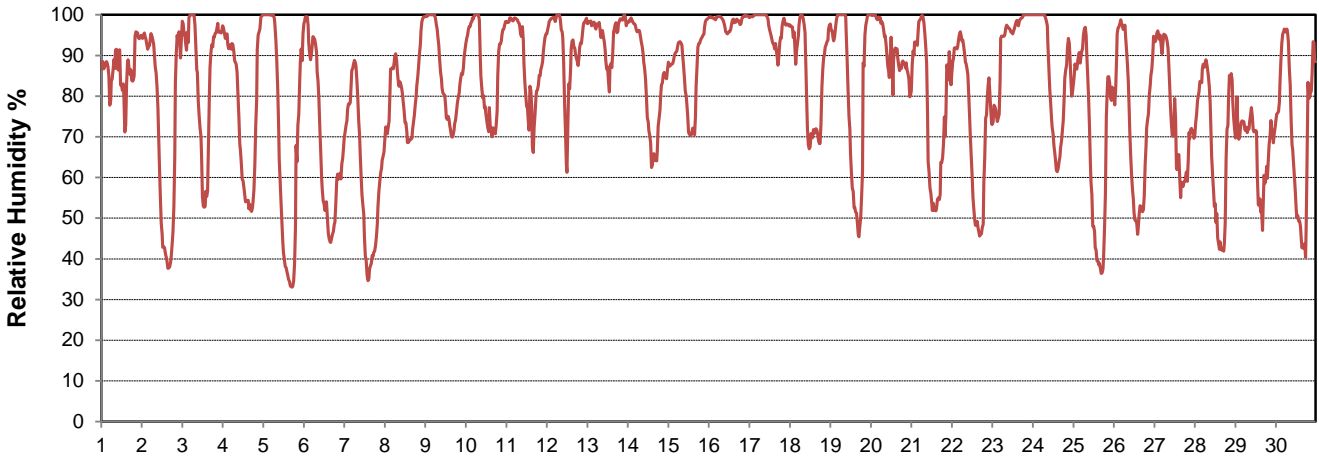
Agriculture and Agri-Food Canada
Agriculture et Agroalimentaire Canada



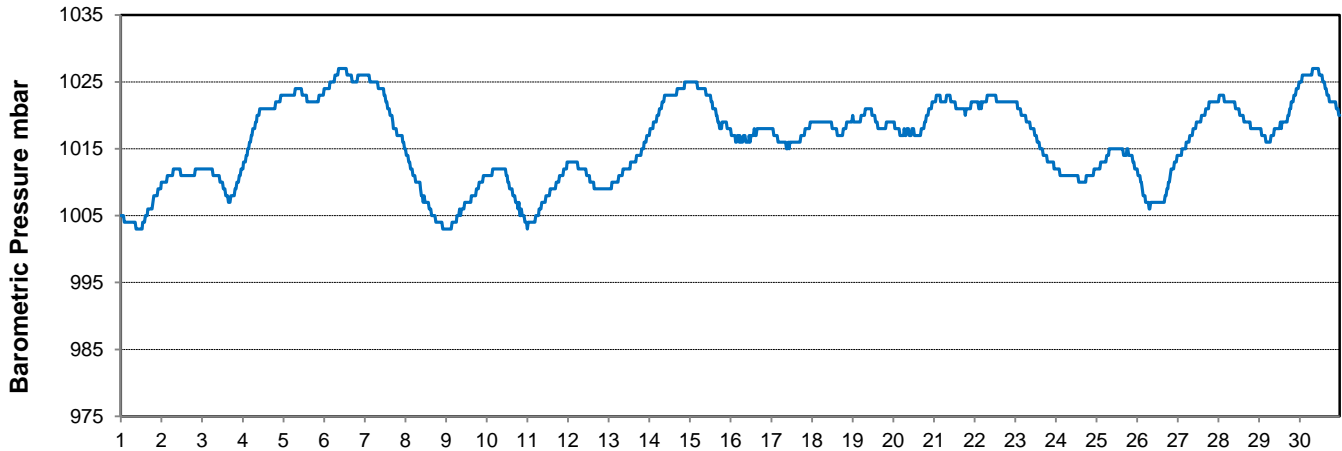
Temperature and Precipitation for September 2018



Relative Humidity for September 2018



Barometric Pressure Corrected to Sea Level for September 2018





SRC CLIMATE REFERENCE STATION DAILY DATA REPORT

CONSERVATION LEARNING CENTRE

Saskatchewan 53.03°N 105.77°W Estab. 2011

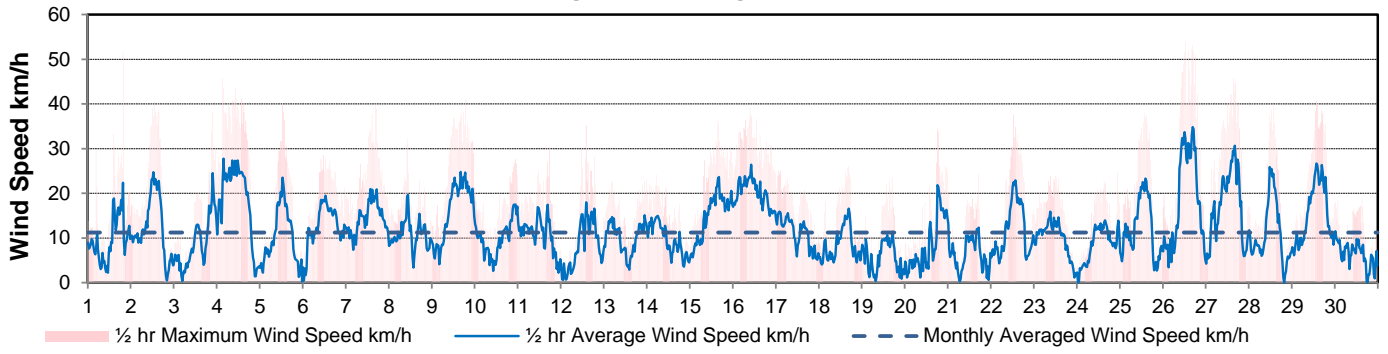
Preliminary **September 2018**

Day	Wind Gust			Soil Temperatures at 0900hrs								Radiation		
	Max	Direction	Time	Surface	5 cm	10 cm	20 cm	50 cm	100 cm	150 cm	300 cm	Bright Sunshine	Global	Diffuse
	km/h			°C	°C	°C	°C	°C	°C	°C	°C	hours	MJ/m ²	MJ/m ²
1	51.4	NW	19:45	10.0	11.5	12.0	12.5	13.0	12.0	11.0	7.0	0.4	4.3	3.8
2	40.5	NW	13:01	9.0	10.5	11.0	12.0	12.5	12.0	11.0	7.0	11.7	17.8	3.3
3	38.1	WNW	21:37	10.0	10.5	11.0	12.0	12.5	12.0	11.0	7.0	1.8	6.2	5.1
4	45.8	NNW	3:21	6.0	11.0	11.5	12.0	12.0	11.5	10.5	7.0	9.3	15.7	4.3
5	40.1	WSW	12:36	7.0	8.5	9.0	11.0	12.0	11.5	10.5	7.0	11.5	17.8	2.7
6	28.5	ENE	11:36	8.0	9.5	10.0	11.0	11.5	11.5	10.5	7.0	9.1	14.5	6.4
7	39.9	SE	16:57	7.5	9.5	10.0	11.0	11.5	11.5	10.5	7.5	6.8	12.7	6.1
8	32.2	ENE	10:35	11.0	11.0	11.0	11.5	11.5	11.5	10.5	7.5	2.1	7.0	5.8
9	41.0	NW	18:50	13.5	11.5	11.5	12.0	11.5	11.0	10.5	7.5	0.8	4.8	4.1
10	27.7	NE	22:58	9.0	11.0	11.0	11.5	11.5	11.0	10.5	7.5	1.5	7.3	6.0
11	30.4	NW	17:45	9.5	11.0	11.0	11.0	11.0	11.0	10.0	6.5	2.9	8.5	6.3
12	35.2	SSE	14:05	9.5	11.0	11.0	11.5	11.5	11.0	10.5	7.5	1.7	5.3	4.1
13	23.1	NNW	23:56	7.0	11.0	11.0	11.5	11.0	11.0	10.0	7.0	0.1	4.6	4.1
14	24.1	N	5:15	3.0	9.5	10.0	10.5	10.5	10.5	10.0	6.5	1.1	7.8	6.6
15	36.3	E	15:54	6.0	9.5	9.5	10.5	11.0	11.0	10.0	7.0	0.7	5.6	4.9
16	39.2	ENE	9:31	3.5	8.5	9.0	9.5	9.5	10.0	9.5	6.5	0.0	2.3	2.1
17	25.0	E	1:59	3.0	6.5	6.0	7.5	7.5	8.5	8.5	4.5	0.0	5.3	4.8
18	26.2	NW	16:38	3.0	7.5	7.0	8.5	9.0	9.5	9.5	6.0	2.7	7.0	5.7
19	23.6	SW	17:06	3.5	7.0	7.0	8.5	9.5	10.0	10.0	7.0	5.6	10.1	5.6
20	34.4	N	18:26	4.5	7.5	7.5	8.5	9.5	10.0	10.0	7.5	0.2	3.4	2.9
21	24.4	NNE	17:13	0.5	6.5	7.0	8.5	9.5	10.0	10.0	7.5	2.4	7.3	5.9
22	37.6	E	12:41	-1.5	5.5	6.0	8.0	9.5	10.0	10.0	7.5	5.4	9.5	3.8
23	23.9	ESE	9:18	-0.5	5.5	6.0	7.0	9.0	10.0	10.0	7.5	0.0	2.9	2.7
24	24.6	NNW	22:45	2.5	5.5	6.0	7.0	8.5	9.5	9.5	7.5	9.7	13.2	2.8
25	37.9	NNW	13:57	5.0	6.5	7.0	7.5	8.5	9.5	9.5	7.5	9.5	12.6	3.4
26	53.8	NW	12:35	7.0	6.5	6.5	7.5	8.5	9.5	9.5	7.5	7.8	10.7	3.3
27	45.7	NNW	15:04	2.0	6.0	6.5	7.5	8.5	9.5	9.5	7.5	5.3	8.3	5.6
28	39.6	WNW	13:35	-1.0	4.5	5.5	7.0	8.5	9.0	9.5	7.5	5.7	9.6	4.2
29	40.8	NW	13:33	2.0	4.5	5.0	6.5	8.0	9.0	9.5	7.5	2.9	6.9	4.9
30	19.0	WSW	15:27	-2.0	3.5	4.5	6.0	8.0	9.0	9.5	7.5	7.1	10.2	5.1
Total												125.8	259.2	136.4
Mean				5.3	8.3	8.6	9.6	10.2	10.4	10.0	7.1	#DIV/0!		
Extreme	53.8	NW	12:35											
Date	26													

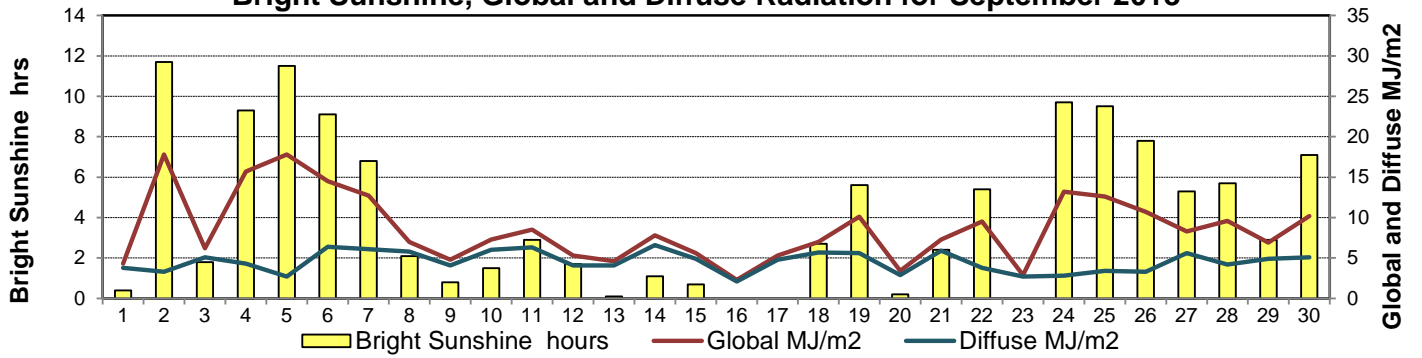
GLOSSARY OF TERMS

Degree-days	Radiation
Tm Mean Temperature	Bright Sunshine is the unobstructed direct radiation from the sun, as opposed to the shading of a location by clouds or by other atmospheric obstructions.
Growing (Tm-5°C); if Tm ≤ 5°C then GDD = 0	
Heating (18°C-Tm); if Tm ≥ 18°C then HDD = 0	Diffuse is radiation reaching the earth's surface after having been scattered from the direct solar beam
Cooling (Tm-18°C); if Tm ≤ 18°C then CDD = 0	Global is the sum of the direct solar and diffuse radiation
T Trace of Precipitation	Relative Humidity The ratio of the air's water vapour content to its water vapour capacity which changes with temperature.
SOG Depth of snow-on-the-ground	
Red Cell no data available	Air Pressure The force exerted by the weight of a column of air above a given point
Red Number manual calculation	Wind Gust The daily highest instantaneous value recorded irrespective of direction and/or duration

Wind Speed for September 2018

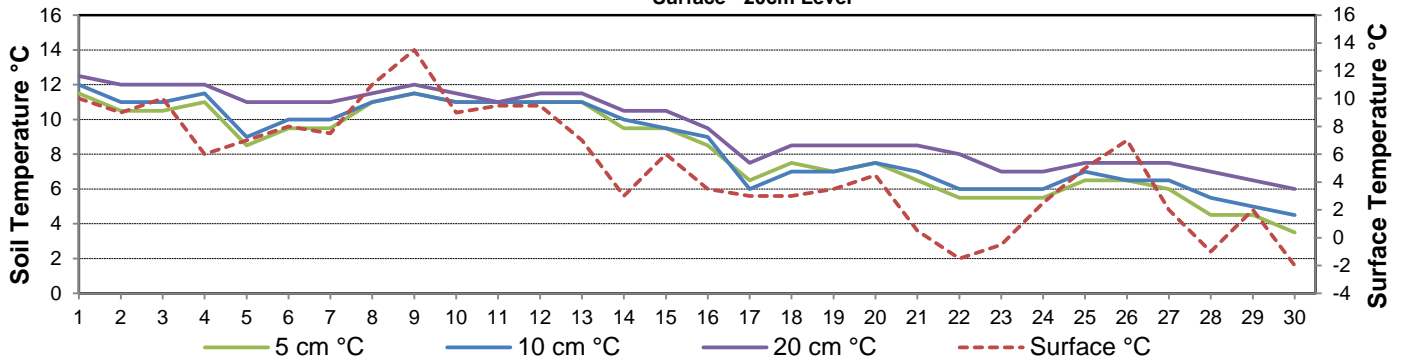


Bright Sunshine, Global and Diffuse Radiation for September 2018



Soil Temperatures for September 2018

Surface - 20cm Level



Soil Temperatures for September 2018

50 - 300cm Level

