



SRC CLIMATE REFERENCE STATION DAILY DATA REPORT

SASKATOON STATION 4057180

Saskatchewan 52°09' N 106°36' W 497 m asl Estab. 1963

Preliminary **AUGUST 2017**

Day	Temperature						Degree-days			Precipitation			Relative Humidity		Station Pressure (sea level)	
	Max	Normal Max	Min	Normal Min	Mean	Normal Mean	Growing	Heating	Cooling	Weighing Gauge	Tipping Bucket	Notes	Max ½ hr Avg	Min ½ hr Avg	Max ½ hr Avg	Min ½ hr Avg
	°C	1981-2010	°C	1981-2010	°C	1981-2010	5°C base	18°C base	18°C base	mm	mm		%	%	mbar	mbar
1	24.4	25.8	11.2	11.6	17.8	18.7	12.8	0.2	0.0	2.1	3.0	light rain	92	37	1025	1023
2	24.2	25.6	13.1	12.4	18.7	19.1	13.7	0.0	0.7	0.0	0.0		91	33	1026	1024
3	26.6	25.3	11.2	11.5	18.9	18.4	13.9	0.0	0.9	0.0	0.0		88	28	1025	1017
4	23.5	26.5	14.0	12.4	18.8	19.5	13.8	0.0	0.8	0.0	0.2		78	42	1017	1015
5	26.5	27.2	12.3	12.5	19.4	19.9	14.4	0.0	1.4	0.0	0.0		90	28	1019	1016
6	27.3	27.7	10.9	13.2	19.1	20.5	14.1	0.0	1.1	0.0	0.0		91	28	1020	1018
7	28.4	27.1	14.7	12.6	21.6	19.9	16.6	0.0	3.6	17.6	16.4	t-storm	89	30	1020	1016
8	20.4	25.0	12.4	12.0	16.4	18.5	11.4	1.6	0.0	12.3	12.0	t-storm	94	69	1019	1017
9	24.8	25.1	10.9	11.4	17.9	18.3	12.9	0.1	0.0	0.0	0.2		91	32	1020	1019
10	26.5	26.3	11.7	12.2	19.1	19.3	14.1	0.0	1.1	0.0	0.0		83	31	1021	1017
11	27.7	24.7	12.7	12.0	20.2	18.4	15.2	0.0	2.2	0.0	0.0		79	28	1019	1017
12	27.6	24.7	11.8	10.7	19.7	17.7	14.7	0.0	1.7	0.0	0.0		88	27	1018	1015
13	27.4	25.4	13.4	10.9	20.4	18.1	15.4	0.0	2.4	0.0	0.0		78	27	1015	1009
14	24.1	25.2	14.3	10.8	19.2	18.0	14.2	0.0	1.2	7.2	8.2	light rain	92	47	1009	1007
15	21.4	24.7	12.8	10.8	17.1	17.8	12.1	0.9	0.0	0.0	0.0		91	37	1010	1006
16	24.4	22.9	11.7	10.9	18.1	16.9	13.1	0.0	0.1	0.0	0.0		75	25	1012	1010
17	26.2	24.1	13.2	10.6	19.7	17.4	14.7	0.0	1.7	0.0	0.0		74	25	1012	1010
18	27.5	24.8	11.8	11.4	19.7	18.2	14.7	0.0	1.7	0.0	0.0		85	26	1013	1004
19	22.0	25.4	13.2	11.3	17.6	18.3	12.6	0.4	0.0	0.0	0.0		79	28	1013	1002
20	21.0	24.4	8.6	10.5	14.8	17.5	9.8	3.2	0.0	0.0	0.0		75	31	1015	1012
21	23.0	25.3	9.3	10.8	16.2	18.1	11.2	1.8	0.0	0.0	0.0		78	23	1019	1014
22	26.0	23.8	10.0	10.8	18.0	17.3	13.0	0.0	0.0	0.0	0.0		73	31	1019	1015
23	25.9	25.4	10.8	10.6	18.4	18.1	13.4	0.0	0.4	0.0	0.0		89	33	1016	1014
24	29.0	24.4	12.2	10.9	20.6	17.7	15.6	0.0	2.6	0.0	0.0		84	32	1014	1006
25	24.2	24.2	13.7	9.9	19.0	17.0	14.0	0.0	1.0	0.0	0.0		75	22	1015	1006
26	28.3	23.4	12.9	9.4	20.6	16.4	15.6	0.0	2.6	0.0	0.0		63	20	1018	1015
27	30.4	23.9	10.0	9.1	20.2	16.6	15.2	0.0	2.2	0.0	0.0		89	19	1020	1015
28	30.9	24.4	10.9	9.7	20.9	17.1	15.9	0.0	2.9	0.0	0.0		78	25	1017	1014
29	26.5	23.6	10.8	10.1	18.7	16.9	13.7	0.0	0.7	0.0	0.0		89	23	1020	1017
30	28.3	23.4	13.7	9.6	21.0	16.6	16.0	0.0	3.0	0.0	0.0	smoke haze	64	27	1020	1009
31	32.3	22.5	18.6	9.1	25.5	15.8	20.5	0.0	7.5	0.0	0.0		68	25	1009	1003
Total							438.3	8.2	43.5	39.2	40.0		Extreme / Date	Extreme / Date	Extreme / Date	Extreme / Date
Avg	26.0	24.9	12.2	11.0	19.1	18.0	1981-2010 Normal			46.5	Normal					
Extreme Date	32.3		8.6				402.8	50.0	49.8	190.8	Cumulative		94	19	1026	1002
	31		20							273.0	Cumulative No		8	27	2	19

Note: Red numbers indicate manual calculation; Red cell indicate data not available

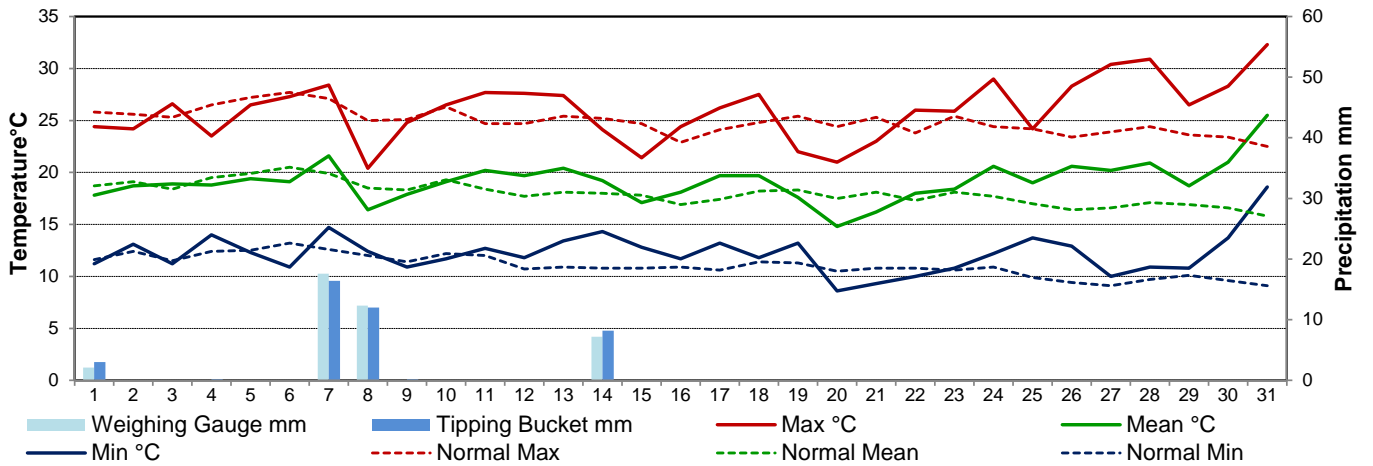
SRC proudly recognizes the following CRS supporters:



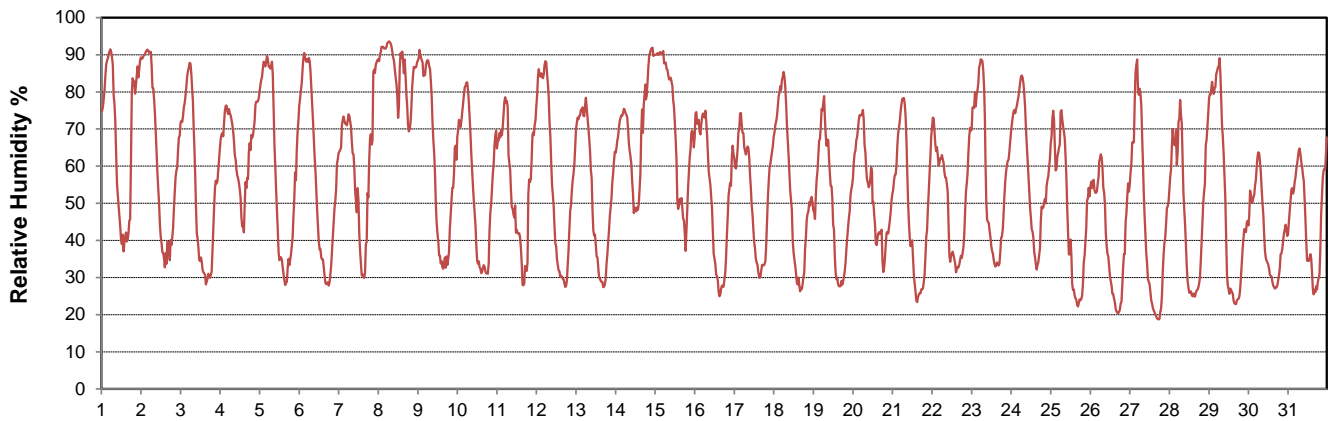
Agriculture and Agri-Food Canada
Agriculture et Agroalimentaire Canada



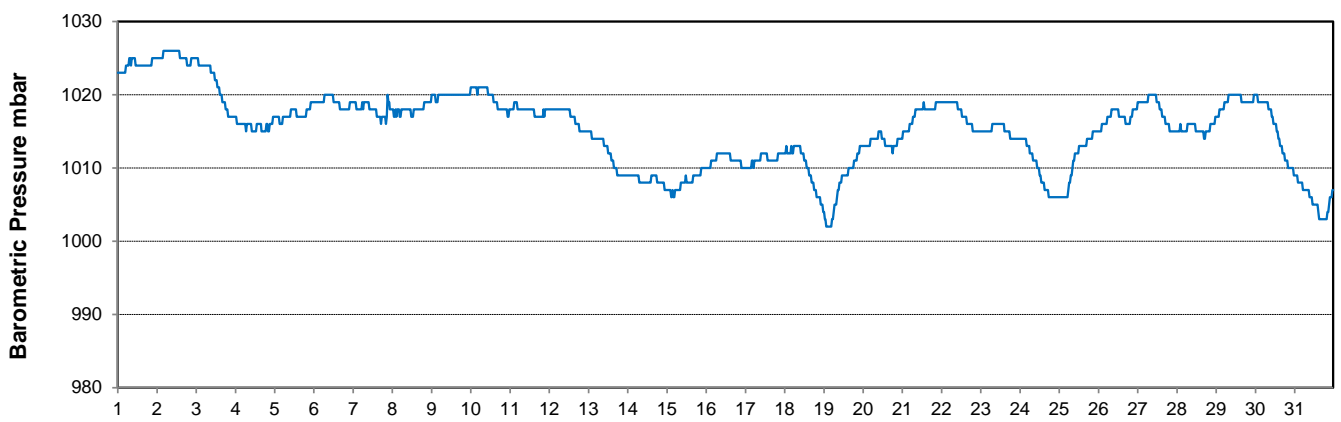
Temperature and Precipitation for August 2017



Relative Humidity for August 2017



Barometric Pressure Corrected to Sea Level for August 2017





SRC CLIMATE REFERENCE STATION DAILY DATA REPORT

SASKATOON STATION 4057180

Saskatchewan 52°09' N 106°36' W 497 m asl Estab. 1963

Preliminary **AUGUST 2017**

Day	Wind Gust			Soil Temperatures at 0900hrs								Soil Moisture 30 cm	Radiation				
	Max	Direction	Time	Surface	5 cm	10 cm	20 cm	50 cm	100 cm	150 cm	300 cm		0900hrs	Bright Sunshine	Possible	% Possible	Global
	km/h			°C	°C	°C	°C	°C	°C	°C	°C	%	hours	hours		MJ/m ²	MJ/m ²
1	30.4	N	18:13	18.0	17.0	18.0	19.5	18.5	14.5	13.0	9.5	13	7.5	15.5	48.5	17.8	5.4
2	23.4	NW	14:38	17.5	18.0	18.5	19.0	18.5	14.5	13.0	9.5	14	10.7	15.4	69.4	21.5	4.7
3	25.8	S	17:32	17.5	16.5	17.5	19.0	18.0	14.5	13.0	10.0	13	11.8	15.4	76.9	22.5	5.5
4	34.4	NE	17:43	16.5	18.0	19.0	19.5	18.0	14.5	13.0	10.0	13	0.8	15.3	5.2	8.8	6.4
5	27.0	ENE	13:58	18.0	17.0	17.5	18.0	17.5	14.5	13.0	10.0	13	9.1	15.2	59.7	20.0	6.9
6	33.3	WSW	16:26	17.0	16.5	17.5	18.5	17.5	14.5	13.0	10.0	13	14.1	15.2	92.8	24.8	3.3
7	81.0	WNW	21:01	19.0	18.5	19.0	19.5	17.5	14.5	13.0	10.0	13	5.5	15.1	36.4	16.0	6.2
8	35.0	NE	15:30	16.0	18.5	19.0	19.0	18.0	14.5	13.0	10.0	15	3.3	15.1	21.9	8.5	5.0
9	24.4	NNE	13:47	15.0	15.5	16.0	17.5	17.5	14.5	13.0	10.0	18	11.1	15.0	74.0	22.0	3.7
10	25.2	SSE	16:50	17.5	16.5	17.0	18.0	17.5	14.5	13.0	10.0	18	12.9	15.0	86.3	22.6	2.9
11	34.4	ENE	12:31	22.0	17.5	18.0	18.5	17.5	14.5	13.0	10.0	17	11.5	14.9	77.2	23.7	3.8
12	26.6	SE	16:30	18.5	17.5	18.5	19.0	17.5	14.5	13.0	10.5	17	14.1	14.8	95.1	23.4	2.6
13	44.0	SE	14:56	18.5	18.5	19.0	19.5	18.0	14.5	13.0	10.5	17	14.2	14.8	96.1	24.1	2.1
14	36.1	SSE	11:08	19.5	18.5	19.5	19.5	18.0	14.5	13.0	10.5	16	4.6	14.7	31.3	9.4	5.2
15	46.2	WSW	15:07	14.5	17.5	18.0	18.5	18.0	14.5	13.0	10.5	17	9.1	14.7	62.1	16.9	6.3
16	33.0	NW	14:54	16.5	15.0	16.0	17.0	17.5	14.5	13.0	10.5	16	13.2	14.6	90.5	22.0	4.5
17	37.6	NW	12:30	18.0	16.5	17.0	17.5	17.0	14.5	13.0	10.5	16	10.9	14.5	75.0	19.2	5.0
18	32.4	SE	23:58	17.0	16.0	16.5	17.5	17.0	14.5	13.0	10.5	15	13.2	14.5	91.2	21.6	3.5
19	55.5	W	3:56	16.0	17.5	18.0	18.5	17.0	14.5	13.0	10.5	15	10.7	14.4	74.3	19.9	6.1
20	31.8	SW	13:00	14.5	15.5	16.0	17.5	17.0	14.5	13.0	10.5	15	4.7	14.3	32.8	11.6	7.3
21	39.7	NW	14:37	13.5	14.5	15.5	16.5	16.5	14.5	13.0	10.5	14	13.6	14.3	95.2	19.5	2.7
22	31.8	WNW	16:38	14.0	15.0	15.5	16.5	16.5	14.5	13.0	10.5	14	8.5	14.2	59.8	17.2	7.1
23	42.3	ESE	23:50	19.0	16.0	16.5	17.0	16.5	14.5	13.0	10.5	14	12.5	14.2	88.3	21.3	2.6
24	49.0	SE	4:24	15.0	17.0	18.0	18.0	17.0	14.0	13.0	10.5	14	9.2	14.1	65.3	17.4	4.9
25	38.4	NW	8:50	16.0	18.5	19.0	19.0	17.0	14.0	13.0	11.0	14	12.2	14.0	87.0	20.3	3.4
26	25.5	NNW	18:43	16.0	17.0	17.5	18.0	17.5	14.5	13.0	11.0	13	11.6	14.0	83.1	20.1	2.8
27	28.6	SSW	16:40	17.5	16.0	17.0	18.0	17.5	14.5	13.0	11.0	13	13.1	13.9	94.2	20.6	1.9
28	34.1	ENE	14:53	19.0	17.0	18.0	18.5	17.5	14.5	13.0	11.0	13	12.4	13.8	89.7	19.2	3.9
29	29.8	NE	15:39	17.0	17.0	18.0	19.0	17.5	14.5	13.0	11.0	13	11.3	13.8	82.1	18.4	3.7
30	49.4	S	16:04	17.5	17.5	18.0	19.0	17.5	14.5	13.0	11.0	13	9.8	13.7	71.5	15.8	6.2
31	40.1	NNW	23:51	22.5	18.5	19.0	19.0	17.5	14.5	13.5	11.0	13	7.2	13.6	52.8	12.6	6.6
Total													314.4	451.9	69.6	578.7	142.2
Mean				17.2	17.0	17.7	18.4	17.5	14.5	13.0	10.4	15	1981-2010 Normal for Radiation				
Extreme	81.0	WNW	21:01	1971- 2000 Normal for Soil Temperatures									271.3	452.5	60.0	542.1	182.4
Date	7				16.5	16.9	18.1	16.8	14.1	12.3	9.1		No. of Bright Sunshine days = 31				

Note: Red numbers indicate manual calculation; Red cell indicate data not available

Partial Solar Eclipse 21 Aug 2017 (10:30 -13:00)

SRC proudly recognizes the following CRS supporters:



Agriculture and
Agri-Food Canada

Agriculture et
Agroalimentaire Canada

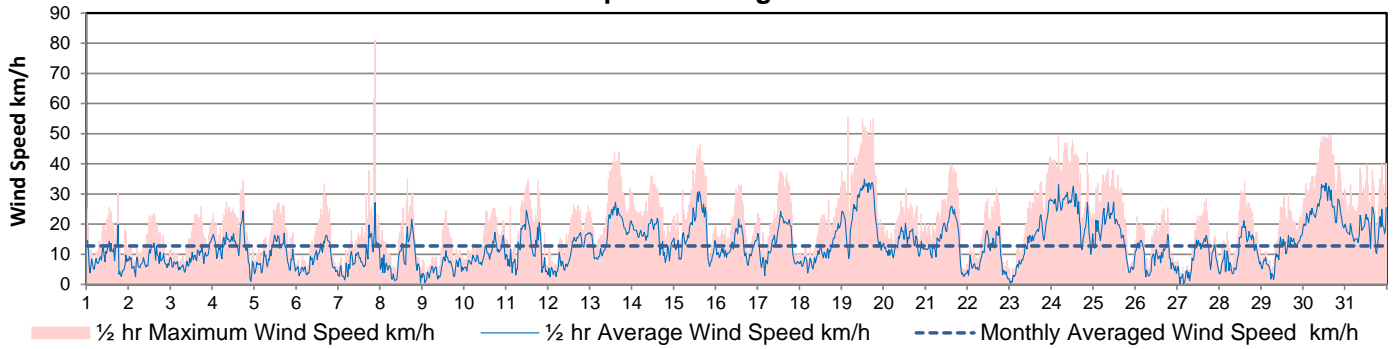


UNIVERSITY OF
SASKATCHEWAN

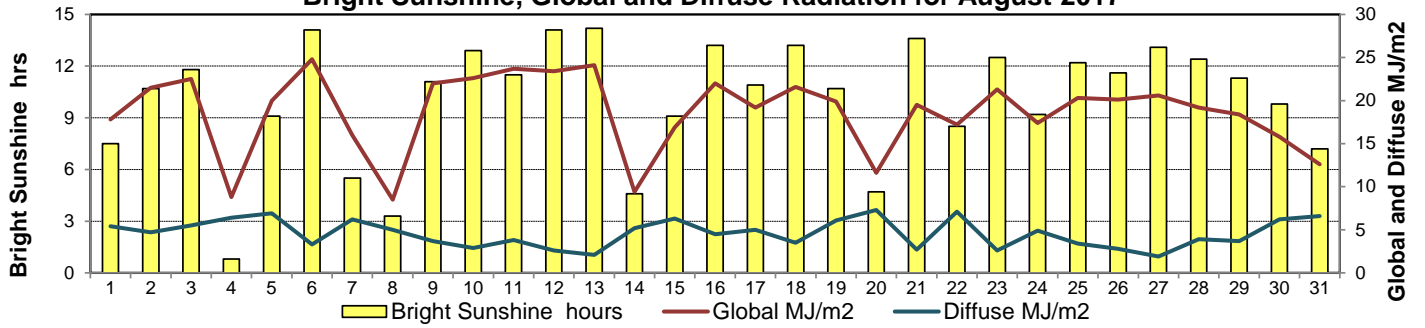


CAMPBELL
SCIENTIFIC
WHEN MEASUREMENTS MATTER

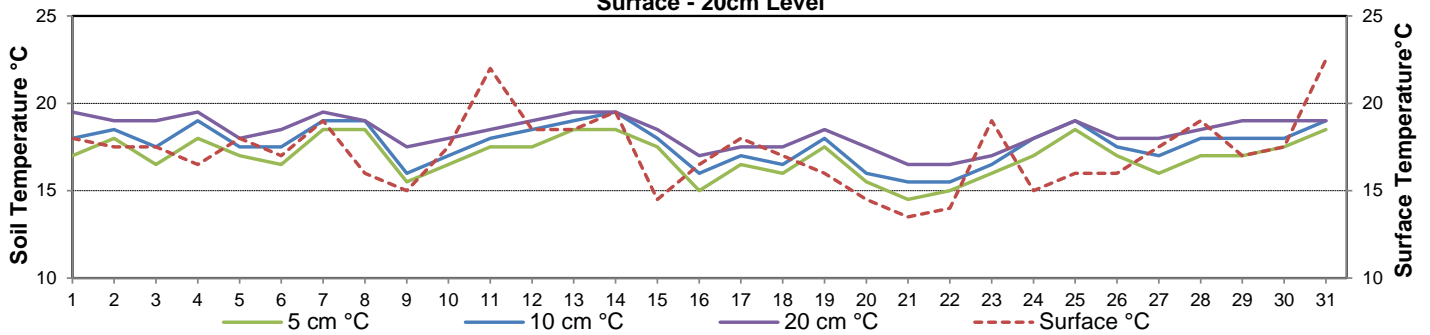
Wind Speed for August 2017



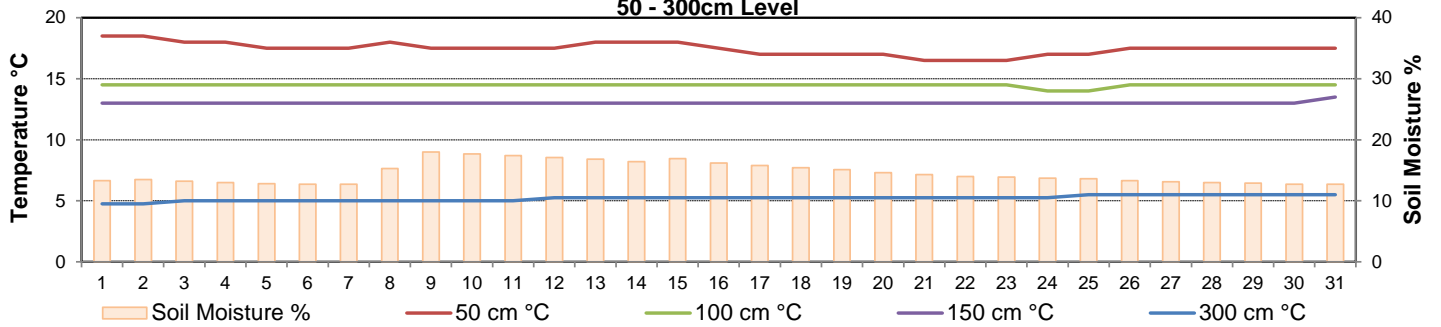
Bright Sunshine, Global and Diffuse Radiation for August 2017



Soil Temperatures for August 2017 Surface - 20cm Level



Soil Temperatures for August 2017 50 - 300cm Level





SRC CLIMATE REFERENCE STATION DAILY DATA REPORT

SASKATOON STATION 4057180



52°09' N 106°36' W 497 m asl Estab. 1963

Preliminary **AUGUST 2017**

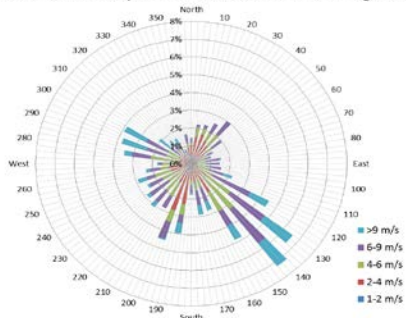
Extreme Records for August

Max/Min Temperature °C				Precipitation - Monthly mm				Wind Monthly km/h				CRS Bright Sunshine - Monthly					
S'toon Area	Date	Site	S'toon CRS	Date	S'toon Area	Date	Site	S'toon CRS	Date	S'toon Airport	Date	S'toon CRS**	Date	Hours	Year	No. of Days	Year
39.7	06/1998	SRC	39.7	06/1998	229.8	1953	SF	105.2	2007					360.8	1969	31	1966*
-2.8	23/1901 28/1976	SM SRC	-2.8	28/1976	0.0	1986	SC	7.0	2001	151 ^W	14/1967	129	1985	200.8	1987	27	1992*

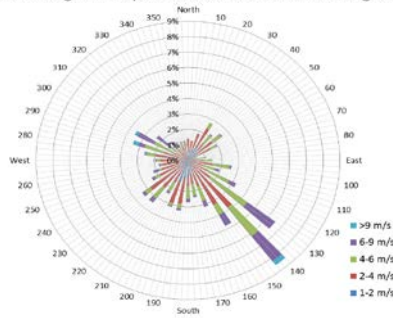
**1975 forward * more than one year

Notable Events for CRS Saskatoon - August						Saskatoon Area Stations		Glossary	
Element	Type	Day	New Record	Old Record	Year	Station	Operational Period	Term	Definition
Temperature	Highest Extreme Minimum Temperature for the Month (aka it didn't cool off at night)	20	8.6	8.2	1998	SM NWMP	c. 1892-1901	T	Trace of precipitation
						SE Eby	1901-1941	Normal	30 year average beginning with the decade
						US Univ. of Sask.	1915-1964	SOG	Depth of snow-on-the-ground in cm
						S Saskatoon	1941-1942	na	not available
						SA Saskatoon A	1942 -	Degree-days	
						NRC Nat. Res. Council	1952-1966	Tm	Mean Temperature
						SRC Sask. Res. Council	1963-	Growing	(Tm-5°C); if Tm ≤ 5°C then GDD = 0
						SWT S'toon Water Treatment Plant	1974 -	Heating	(18°C-Tm); if Tm ≤ 18°C then HDD = 0
						SC S'toon Central Ave	1974-1989	Cooling	(Tm-18°C); if Tm ≥ 18°C then CDD = 0
						S1 Saskatoon 1	1976-1978	Extreme Cooling	(Tm-24°C); if Tm ≥ 24°C then CDD = 0
						S2 Saskatoon 2	1977-1990	Summer 2017 was the 7th driest (1964-2017) with 92.7mm thanks to t-storms in early August Summer 2017 had: 10th highest mean average temperature 9th highest maximum average temperature 12th highest minimum average temperature	
						K S'toon Kernen Farm	1993-2004		
						KCS S'toon Kernen Farm CS	1996-		
						RCS Environment Canada	2008-		
						SF Sutherland Forestry	1943-1970		

1/2 hr Maximum Wind Speed and Direction Saskatoon August 2017



10 minute Average Wind Speed and Direction Saskatoon August 2017



NOTE: meteorologic summer is June, July and August

SRC proudly recognizes the following CRS supporters:



Agriculture and Agri-Food Canada

Agriculture et Agroalimentaire Canada

