



SRC CLIMATE REFERENCE STATION DAILY DATA REPORT

CONSERVATION LEARNING CENTRE

Saskatchewan 53.03°N 105.77°W Estab. 2011

Preliminary

June 2014

Day	Temperature			Degree-days			Precipitation			Relative Humidity		Station Pressure <i>corrected to sea level</i>	
	Max	Min	Mean	Growing	Heating	Cooling	Weighing Gauge	Tipping Bucket	Notes	Max ½ hr Avg	Min ½ hr Avg	Max ½ hr Avg	Min ½ hr Avg
	°C	°C	°C	5°C base	18°C base	18°C base	mm	mm		%	%	mbar	mbar
1	17.6	9.6	13.6	8.6	4.4	0.0	0.0	0.0		70	42	1017	1013
2	22.5	6.4	14.5	9.5	3.5	0.0	0.0	0.0		94	36	1016	1009
3	24.8	9.0	16.9	11.9	1.1	0.0	0.0	0.0		95	31	1010	1007
4	19.2	10.4	14.8	9.8	3.2	0.0	8.1	8.1		92	59	1007	1004
5	12.1	4.8	8.5	3.5	9.5	0.0	0.8	0.8		93	68	1012	1005
6	12.3	3.7	8.0	3.0	10.0	0.0	0.0	0.0		82	43	1016	1012
7	18.2	3.1	10.7	5.7	7.3	0.0	0.0	0.0		92	35	1016	1013
8	16.5	4.9	10.7	5.7	7.3	0.0	3.5	3.4		95	49	1016	1014
9	15.6	5.7	10.7	5.7	7.3	0.0	1.0	1.0		88	48	1013	1001
10	12.6	7.4	10.0	5.0	8.0	0.0	0.5	0.6		91	69	1012	1001
11	20.7	5.1	12.9	7.9	5.1	0.0	0.0	0.0		93	27	1016	1012
12	23.7	6.1	14.9	9.9	3.1	0.0	0.0	0.0		92	26	1016	1011
13	20.8	11.5	16.2	11.2	1.8	0.0	0.0	0.0		78	43	1012	1008
14	19.4	8.0	13.7	8.7	4.3	0.0	0.2	0.0		77	43	1011	1008
15	12.9	10.0	11.5	6.5	6.5	0.0	6.2	6.2		94	68	1009	1003
16	14.5	10.3	12.4	7.4	5.6	0.0	4.4	4.5		95	81	1011	1003
17	19.1	11.0	15.1	10.1	2.9	0.0	0.0	0.0		93	57	1015	1011
18	20.9	12.3	16.6	11.6	1.4	0.0	2.2	1.9		88	58	1015	1012
19	18.1	14.0	16.1	11.1	1.9	0.0	36.4	36.4		95	72	1011	1006
20	18.8	13.3	16.1	11.1	1.9	0.0	6.0	6.1		95	82	1006	1002
21	19.1	12.5	15.8	10.8	2.2	0.0	1.1	1.1		96	71	1008	1004
22	21.1	13.9	17.5	12.5	0.5	0.0	3.0	3.0		94	64	1012	1008
23	21.6	14.6	18.1	13.1	0.0	0.1	0.0	0.0		93	55	1019	1013
24	21.6	11.6	16.6	11.6	1.4	0.0	0.0	0.0		89	39	1021	1017
25	23.5	13.1	18.3	13.3	0.0	0.3	0.0	0.0		84	42	1016	1009
26	22.8	15.3	19.1	14.1	0.0	1.1	0.0	0.0		92	54	1009	1004
27	25.6	13.7	19.7	14.7	0.0	1.7	0.0	0.0		94	43	1003	1000
28	27.5	13.7	20.6	15.6	0.0	2.6	0.1	0.0		94	34	1001	996
29	23.8	16.6	20.2	15.2	0.0	2.2	14.7	14.4		92	59	996	993
30	17.7	15.1	16.4	11.4	1.6	0.0	14.9	14.9		92	69	1013	995
Total				296.2	101.8	8.0	103.1	102.4					
Avg	19.5	10.2	14.9				227.8	Cumulative ppt 2014					
Extreme	27.5	3.1					36.4	36.4		96	26	1021	993
Date	28	7					19	19		21	12	24	29
Site Extreme	28.4	5.2						140.4					
Date	25/2012	11/2012						2012					

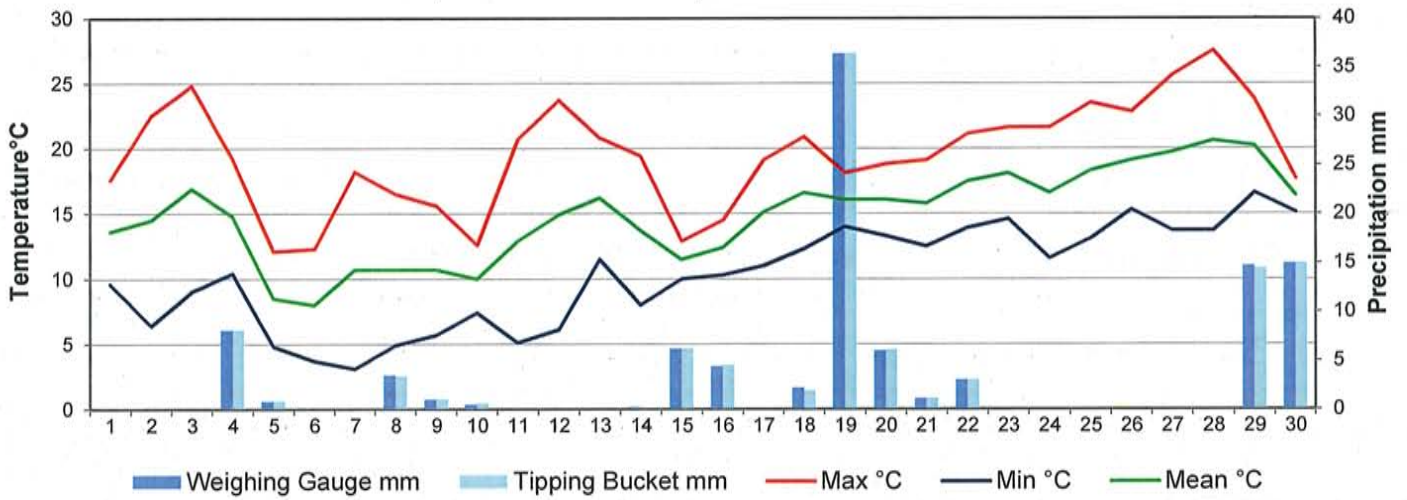


Agriculture and Agri-Food Canada

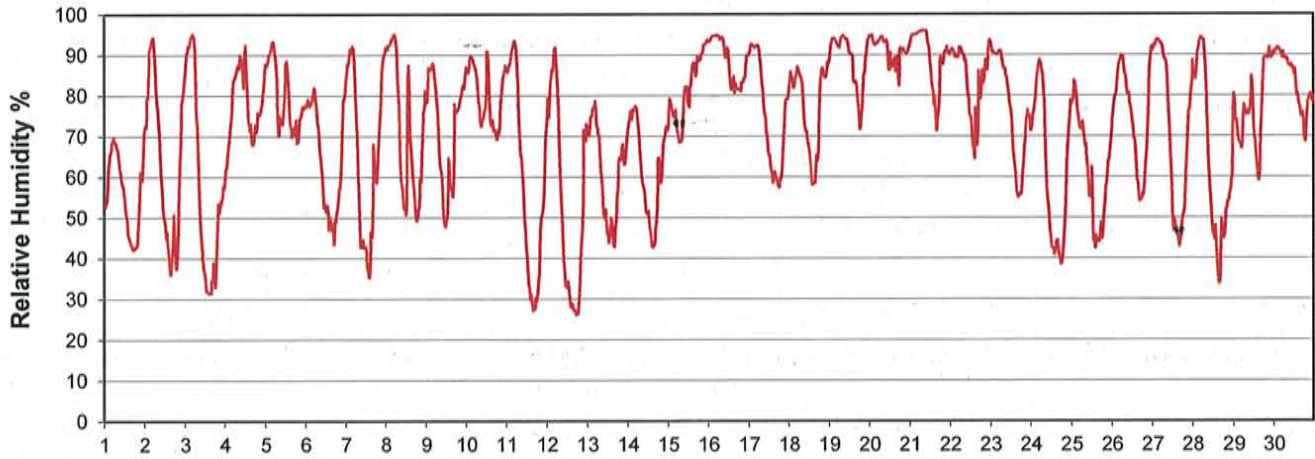
Agriculture et Agroalimentaire Canada



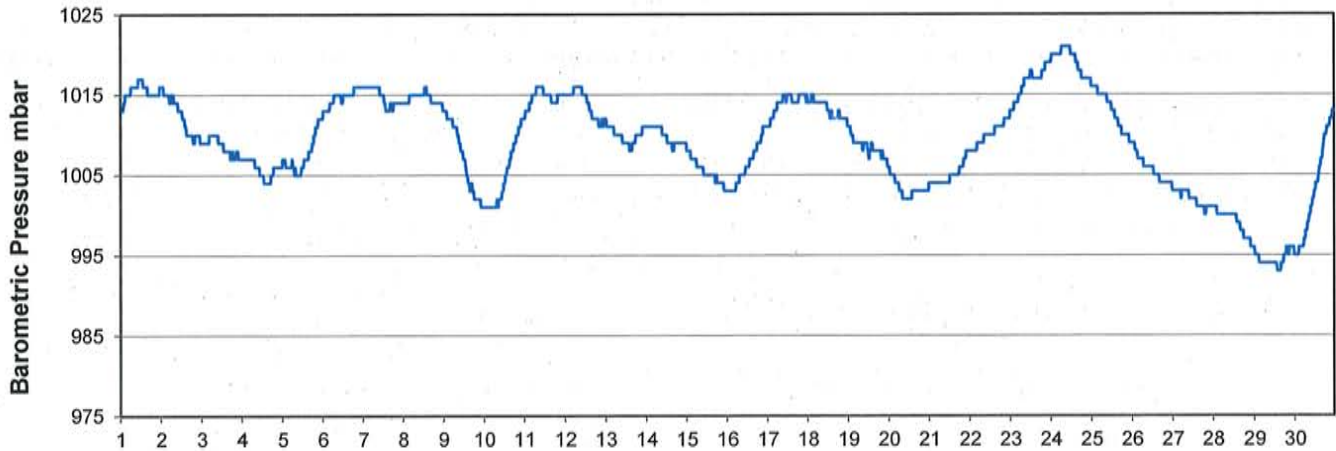
Temperature and Precipitation for June 2014



Relative Humidity for June 2014



Barometric Pressure Corrected to Sea Level for June 2014





SRC CLIMATE REFERENCE STATION DAILY DATA REPORT

CONSERVATION LEARNING CENTRE

Saskatchewan 53.03°N 105.77°W Estab. 2011

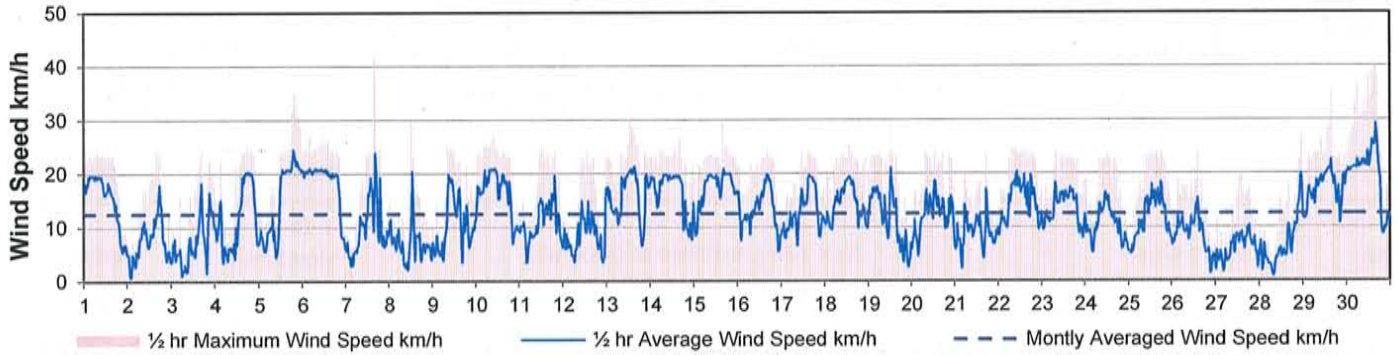
Preliminary June 2014

Day	Wind Gust			Soil Temperatures at 0900hrs								Soil Moisture 30 cm	Radiation		
	Max km/h	Direction	Time	Surface °C	5 cm °C	10 cm °C	20 cm °C	50 cm °C	100 cm °C	150 cm °C	300 cm °C	0900hrs %	Bright Sunshine hours	Global MJ/m ²	Diffuse MJ/m ²
1	23.7	ENE	7:49	12.0	11.0	11.0	10.5	8.0	5.5	3.5	3.0	38	13.6	26.7	8.9
2	24.2	WSW	16:20	15.0	10.0	10.0	10.0	8.0	5.5	4.0	3.0	37	12.4	24.1	8.5
3	24.1	S	16:45	16.5	11.0	10.5	10.5	8.5	5.5	4.0	3.5	37	11.4	25.7	5.0
4	25.7	WNW	18:00	14.5	12.5	12.0	11.0	8.5	6.0	4.0	3.0	37	4.9	14.5	8.6
5	34.8	WNW	19:20	11.5	11.5	11.5	11.0	9.0	6.0	4.0	3.0	38	2.5	9.6	7.4
6	28.2	NNW	11:30	9.0	9.5	9.5	10.0	9.0	6.0	4.5	3.0	38	11.3	22.4	8.7
7	41.2	NNW	16:26	13.5	9.0	9.0	9.5	8.5	6.5	4.5	3.5	37	11.0	22.1	10.1
8	30.6	NNW	13:06	12.0	9.5	9.5	9.5	8.5	6.5	4.5	3.5	37	12.3	22.6	7.2
9	24.9	E	15:10	14.0	10.0	9.5	9.5	8.5	6.5	4.5	3.5	38	3.5	10.1	7.9
10	27.4	WNW	9:57	12.5	10.0	9.5	9.0	8.0	6.0	4.0	2.5	38	1.1	9.3	8.1
11	24.3	NE	12:46	12.0	9.0	9.0	9.5	8.0	6.5	4.5	3.0	37	13.4	27.2	6.2
12	24.5	WSW	13:58	16.0	10.0	10.0	10.0	8.5	7.0	5.0	3.5	37	13.4	26.9	7.6
13	29.7	ENE	13:18	17.0	12.0	11.5	11.0	9.0	7.0	5.0	3.5	37	9.8	22.1	11.6
14	29.4	ESE	18:08	13.0	11.5	11.5	11.5	9.5	7.0	5.5	3.5	36	8.7	20.3	10.6
15	30.1	NNE	16:22	11.5	12.0	12.0	11.5	9.5	7.0	5.5	3.5	36	0.0	5.6	4.9
16	24.3	E	16:48	11.0	8.5	7.5	7.0	5.5	4.5	2.5	-1.0	37	0.1	11.2	9.6
17	23.9	ENE	15:45	15.0	10.5	10.0	9.5	7.5	6.0	4.5	1.5	38	8.2	19.2	11.1
18	25.0	ESE	13:38	16.0	12.5	12.0	11.0	9.0	7.0	5.5	3.5	38	2.3	13.2	9.8
19	29.1	ENE	12:46	15.0	11.5	11.5	9.5	6.0	4.5	3.0	0.0	46	0.4	5.6	4.8
20	24.0	NNE	13:25	15.0	11.0	10.5	9.0	7.0	5.0	3.5	0.0	47	1.0	10.0	7.9
21	23.9	N	17:40	14.0	10.5	10.0	8.5	6.5	5.0	3.0	-1.0	47	1.2	11.1	8.5
22	25.1	N	16:54	15.5	11.5	10.5	9.5	6.5	5.0	3.5	-0.5	46	5.2	17.2	9.3
23	24.0	NE	8:20	15.5	12.5	12.0	10.5	8.0	6.0	4.0	1.0	45	8.3	21.9	9.2
24	23.4	E	12:38	15.5	14.5	14.0	13.5	11.0	8.0	6.0	3.5	44	14.6	29.9	3.7
25	24.6	S	13:10	18.0	15.0	14.5	14.0	11.5	8.5	6.5	4.0	44	11.2	22.2	8.4
26	23.6	SSW	14:48	17.5	15.0	14.5	13.5	11.0	8.0	6.0	3.0	43	4.8	13.7	8.9
27	20.3	SSW	13:15	17.0	15.0	14.5	14.0	11.5	8.5	6.5	3.5	42	10.0	22.7	8.2
28	27.1	NNE	23:02	19.0	16.0	16.0	15.5	12.5	9.0	7.0	4.0	42	9.5	22.0	9.3
29	35.4	N	15:45	18.5	17.0	16.5	15.5	12.5	9.0	7.0	4.0	41	2.0	12.4	8.9
30	43.7	N	16:08	15.0	14.0	13.0	12.0	8.5	6.0	4.0	0.0	51	1.5	8.4	6.8
Total													209.6	529.9	245.7
Mean				14.6	11.8	11.4	10.9	8.8	6.5	4.7	2.5	40.3			
Extreme	43.7	N	16:08												
Date	30														
Site															
Extreme															

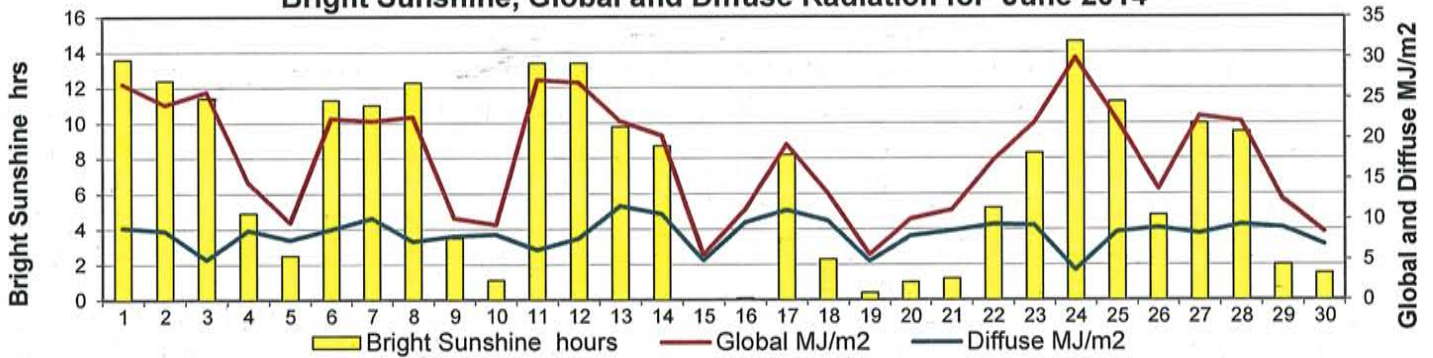
GLOSSARY OF TERMS

Tm Mean Temperature	Bright Sunshine is the unobstructed direct radiation from the sun, as opposed to the shading of a location by clouds or by other atmospheric obstructions.
Growing (Tm-5°C); if Tm ≤ 5°C then GDD = 0	Diffuse is radiation reaching the earth's surface after having been scattered from the direct solar beam
Heating (18°C-Tm); if Tm ≥ 18°C then HDD = 0	Global is the sum of the direct solar and diffuse radiation
Cooling (Tm-18°C); if Tm ≤ 18°C then CDD = 0	Relative Humidity The ratio of the air's water vapour content of its water vapour capacity which changes with temperature.
T Trace of Precipitation	
SOG Depth of snow-on-the-ground	
Red Cell no data available	Air Pressure The force exerted by the weight of a column of air above a given point
Red Number manual calculation	Wind Gust The daily highest instantaneous value recorded irrespective of direction and/or duration

Wind Speed for June 2014

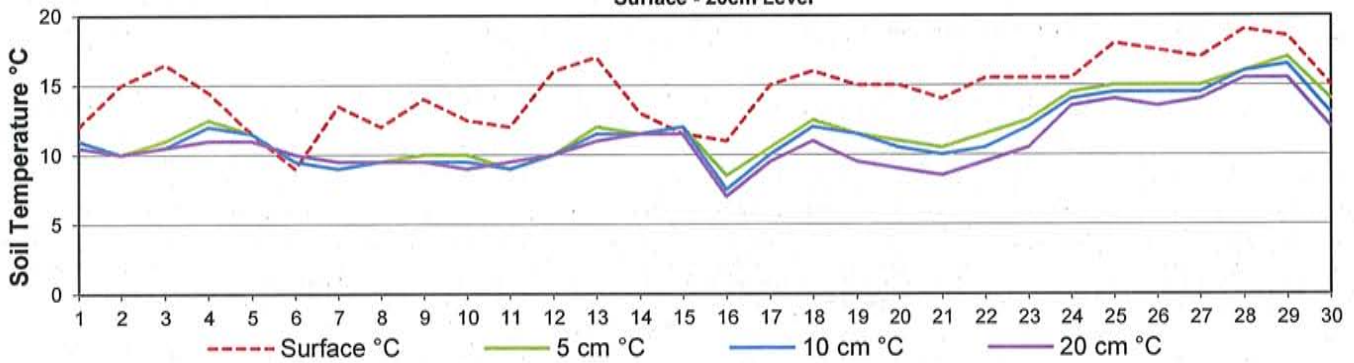


Bright Sunshine, Global and Diffuse Radiation for June 2014



Soil Temperatures for June 2014

Surface - 20cm Level



Soil Temperatures for June 2014

50 - 300cm Level

