



SRC CLIMATE REFERENCE STATION DAILY DATA REPORT

SASKATOON STATION 4057180

Saskatchewan 52°09' N 106°36' W 497 m asl Estab. 1963

Preliminary **SEPTEMBER 2022**

Day	Temperature						Degree-days			Precipitation			Relative Humidity		Station Pressure (sea level)	
	Max	Normal Max	Min	Normal Min	Mean	Normal Mean	Growing	Heating	Cooling	Weighing Gauge	Tipping Bucket	Notes	Max ½ hr Avg	Min ½ hr Avg	Max ½ hr Avg	Min ½ hr Avg
	°C	1991-2020	°C	1991-2020	°C	1991-2020	5°C base	18°C base	18°C base	mm	mm		%	%	mbar	mbar
1	31.0	22.5	14.1	9.5	22.6	16.1	17.6	0.0	4.6	0.0	0.0		62	19	1014	1003
2	26.3	22.4	8.8	9.3	17.6	15.9	12.6	0.4	0.0	0.0	0.0		76	23	1020	1014
3	35.8	23.3	13.7	9.0	24.8	16.1	19.8	0.0	6.8	0.0	0.0		53	13	1018	1011
4	35.9	21.5	17.5	9.4	26.7	15.5	21.7	0.0	8.7	0.0	0.0		55	15	1011	1005
5	30.2	20.7	14.0	8.7	22.1	14.7	17.1	0.0	4.1	0.0	0.0		72	23	1014	1002
6	24.6	21.2	11.2	7.8	17.9	14.5	12.9	0.1	0.0	0.0	0.0		65	15	1022	1014
7	34.6	21.6	12.7	7.8	23.7	14.8	18.7	0.0	5.7	0.0	0.0		53	12	1019	1001
8	18.2	22.4	9.4	8.5	13.8	15.5	8.8	4.2	0.0	0.0	0.0		76	31	1015	1007
9	15.7	20.9	6.2	7.8	11.0	14.4	6.0	7.0	0.0	0.0	0.0		87	34	1018	1015
10	23.8	20.3	4.3	7.0	14.1	13.7	9.1	3.9	0.0	0.0	0.0		71	18	1019	1013
11	33.2	20.9	9.3	6.9	21.3	13.9	16.3	0.0	3.3	0.0	0.0		56	9	1014	1009
12	22.3	19.4	7.4	6.9	14.9	13.2	9.9	3.1	0.0	0.0	0.0		82	23	1018	1009
13	17.8	17.9	9.0	6.1	13.4	12.0	8.4	4.6	0.0	0.2	0.0	showers	66	34	1018	1015
14	15.3	18.4	5.6	5.3	10.5	11.9	5.5	7.5	0.0	0.0	0.3		89	51	1016	1014
15	19.7	19.1	2.3	6.4	11.0	12.8	6.0	7.0	0.0	0.3	0.0	fog	95	49	1019	1016
16	20.0	19.3	11.3	5.9	15.7	12.6	10.7	2.3	0.0	0.0	0.0		80	51	1017	1010
17	20.7	18.1	9.5	6.3	15.1	12.2	10.1	2.9	0.0	0.0	0.0		85	47	1015	1006
18	22.8	17.9	8.9	5.6	15.9	11.8	10.9	2.1	0.0	0.0	0.0		91	24	1012	1007
19	16.1	18.2	7.3	6.0	11.7	12.1	6.7	6.3	0.0	3.6	3.3	showers	92	60	1011	1004
20	13.4	16.7	6.0	4.8	9.7	10.8	4.7	8.3	0.0	0.8	0.8	showers	91	54	1022	1011
21	17.6	16.2	2.4	3.6	10.0	10.0	5.0	8.0	0.0	0.0	0.0		86	27	1026	1022
22	20.8	17.6	2.9	4.3	11.9	11.0	6.9	6.1	0.0	0.0	0.0		75	20	1022	1007
23	21.2	19.2	7.6	5.0	14.4	12.1	9.4	3.6	0.0	0.0	0.0		88	35	1009	1005
24	21.5	19.9	7.9	6.1	14.7	13.0	9.7	3.3	0.0	0.0	0.0		67	21	1020	1009
25	21.4	19.9	4.3	5.2	12.9	12.6	7.9	5.1	0.0	0.0	0.0		70	22	1023	1017
26	22.9	18.2	9.9	5.3	16.4	11.8	11.4	1.6	0.0	0.0	0.0		58	29	1021	1017
27	25.0	17.0	6.6	3.9	15.8	10.4	10.8	2.2	0.0	0.0	0.0		75	26	1021	1015
28	29.9	17.2	8.9	3.6	19.4	10.5	14.4	0.0	1.4	0.0	0.0		67	20	1014	1012
29	28.5	17.0	6.1	3.9	17.3	10.5	12.3	0.7	0.0	0.0	0.0		88	22	1016	1013
30	21.6	16.5	11.4	2.8	16.5	9.6	11.5	1.5	0.0	0.0	0.0		84	43	1023	1016
Total							332.8	91.8	34.6	4.9	4.3		Extreme / Date	Extreme / Date	Extreme / Date	Extreme / Date
Avg	23.6	19.4	8.6	6.3	16.1	12.9	1991-2020 Normal			33.4	1991-2020 Normal					
Extreme Date	35.9		2.3				238.0	163.6	9.6	228.4	Year to date 2022 Cumulative		95	9	1026	1001
	4		15							308.2	Year to date Cumulative Normal		15	11	21	7

Note: Red numbers indicate manual calculation; Red cell indicate data not available

SRC proudly recognizes the following CRS supporters:

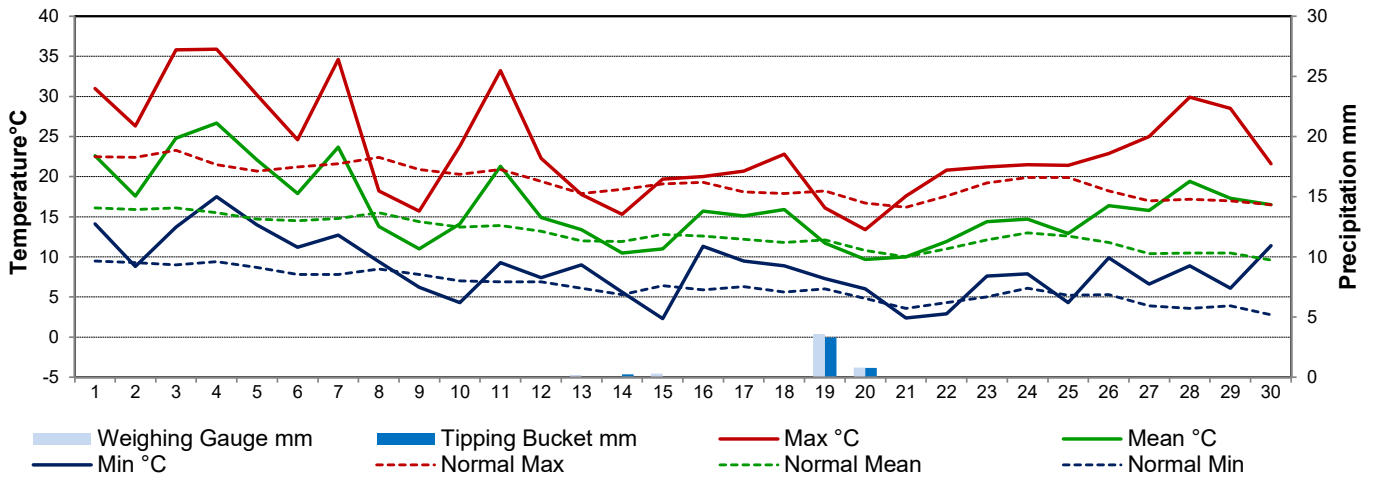


Agriculture and Agri-Food Canada

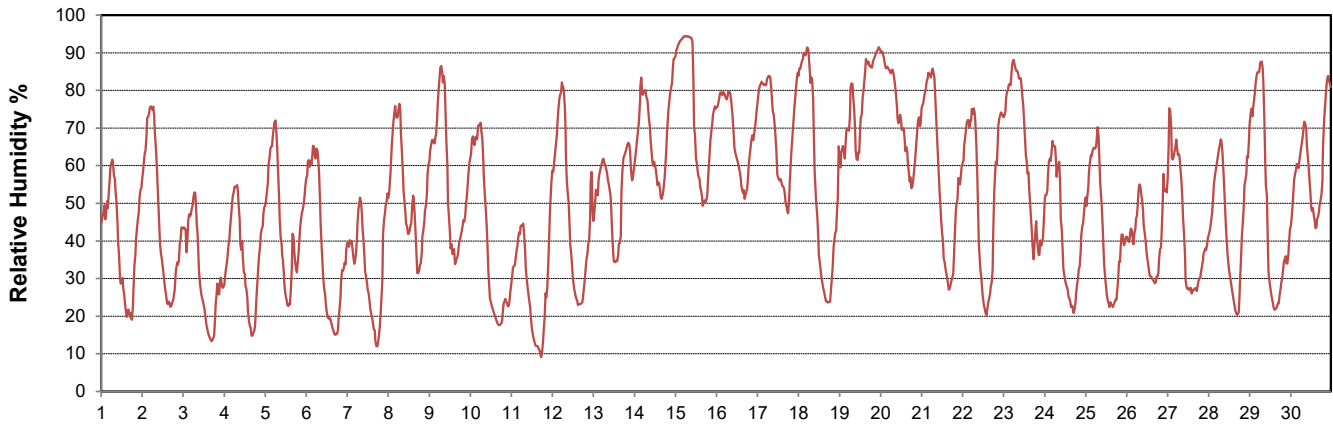
Agriculture et Agroalimentaire Canada



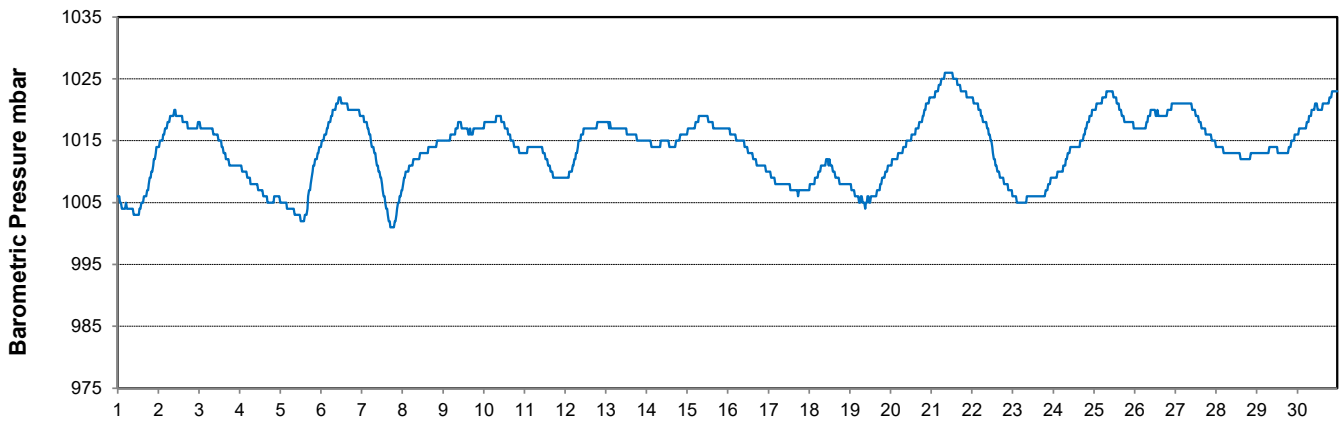
Temperature and Precipitation for September 2022



Relative Humidity for September 2022



Barometric Pressure Corrected to Sea Level for September 2022





SRC CLIMATE REFERENCE STATION DAILY DATA REPORT

SASKATOON STATION 4057180

Saskatchewan 52°09' N 106°36' W 497 m asl Estab. 1963

Preliminary SEPTEMBER 2022

Day	Wind Gust (10 meters)			Wind Speed (10 meters) Daily Average	Soil Temperatures at 0900hrs								Radiation				
	Max	Direction	Time		Surface	5 cm	10 cm	20 cm	50 cm	100 cm	150 cm	300 cm	Bright Sunshine	Possible	% Possible	Global	Diffuse
	km/h				°C	°C	°C	°C	°C	°C	°C	°C	hours	hours		MJ/m ²	MJ/m ²
1	65.7	NW	18:27	20.5	20.5	18.5	19.5	19.5	17.5	16.0	14.0	11.0	13.1	13.6	96.4	19.4	4.1
2	26.6	NW	0:04	12.0	13.5	16.0	17.5	19.0	18.0	16.0	14.0	11.0	13.1	13.5	96.9	20.3	2.4
3	36.9	S	23:55	13.2	19.5	17.0	18.0	18.5	17.5	16.0	14.0	11.0	12.8	13.5	95.1	19.7	3.5
4	32.7	S	0:04	14.2	20.5	19.0	19.5	20.0	18.0	16.0	14.0	11.0	11.5	13.4	85.9	15.9	6.3
5	60.3	NW	17:09	19.0	19.0	19.0	20.0	20.0	18.0	16.0	14.0	11.0	11.7	13.3	87.8	17.0	5.6
6	40.4	WNW	10:54	15.9	15.5	17.0	18.5	19.5	18.0	16.0	14.0	11.0	12.3	13.3	92.8	19.6	2.7
7	50.0	NW	21:09	18.8	16.0	16.0	17.5	18.5	18.0	16.0	14.0	11.0	10.9	13.2	82.6	17.5	4.6
8	51.0	WNW	12:40	22.8	13.5	17.0	18.5	19.0	17.5	16.0	14.0	11.0	9.9	13.1	75.4	14.4	5.0
9	52.4	NW	15:30	18.5	8.0	14.0	15.5	17.0	17.5	16.0	14.0	11.0	6.0	13.1	45.9	11.8	7.5
10	46.0	WSW	14:37	14.5	10.0	12.0	13.5	15.5	16.5	16.0	14.0	11.0	12.3	13.0	94.6	18.5	2.5
11	36.5	SW	13:31	13.9	14.0	13.5	14.5	15.5	16.0	15.5	14.0	11.0	11.7	12.9	90.5	17.5	3.5
12	38.2	NNE	13:09	16.7	14.0	14.5	16.0	16.5	16.0	15.5	14.0	11.5	11.8	12.9	91.8	17.1	3.6
13	36.8	S	10:50	15.6	11.5	14.0	15.0	16.5	16.0	15.5	14.0	11.5	0.3	12.8	2.3	6.6	6.0
14	34.8	SSE	11:04	15.4	12.0	13.5	14.5	15.5	16.0	15.5	14.0	11.5	5.9	12.7	46.3	10.0	7.2
15	34.3	ESE	20:53	10.7	8.5	11.5	12.5	14.0	15.5	15.0	14.0	11.5	3.6	12.7	28.4	10.7	6.5
16	32.8	ESE	18:22	17.1	12.5	14.5	14.5	15.0	15.0	15.0	13.5	11.5	3.4	12.6	27.0	8.3	6.8
17	21.0	S	12:00	9.5	13.0	13.5	14.5	15.0	15.0	15.0	13.5	11.5	6.1	12.5	48.7	9.5	7.3
18	32.9	SW	15:53	10.8	11.0	13.5	14.5	15.0	15.0	14.5	13.5	11.5	11.2	12.5	89.8	15.8	3.2
19	43.2	WNW	6:31	12.7	12.0	13.0	14.0	15.0	15.0	14.5	13.5	11.5	0.8	12.4	6.5	4.4	3.9
20	52.5	NW	14:57	23.2	9.5	12.5	13.0	14.0	15.0	14.5	13.5	11.5	2.2	12.3	17.8	6.5	5.5
21	24.3	WNW	1:16	8.8	6.0	8.0	10.0	12.0	14.5	14.5	13.5	11.5	12.0	12.3	97.8	16.2	1.6
22	43.6	S	11:29	16.7	8.0	8.0	9.5	11.5	13.5	14.0	13.5	11.5	9.2	12.2	75.4	14.1	3.2
23	28.8	NW	17:57	10.8	9.5	11.0	11.5	12.5	13.5	14.0	13.5	11.5	4.8	12.1	39.6	9.7	4.6
24	63.8	WNW	16:28	21.1	10.5	10.5	11.5	12.5	13.5	14.0	13.0	11.5	10.5	12.1	87.0	15.1	1.9
25	37.8	WNW	14:15	10.8	8.5	9.5	11.0	12.5	13.5	13.5	13.0	11.5	10.8	12.0	90.0	14.4	2.9
26	30.6	WNW	13:36	10.7	12.5	12.0	12.5	13.0	13.5	13.5	13.0	11.5	11.5	11.9	96.4	14.5	1.6
27	38.0	SSE	15:34	16.1	12.0	10.5	12.0	13.5	13.5	13.5	13.0	11.5	10.0	11.9	84.3	13.3	3.6
28	30.1	SSE	0:03	8.6	12.0	12.0	13.5	14.0	13.5	13.5	13.0	11.5	11.3	11.8	95.8	14.0	1.9
29	35.4	E	16:04	13.2	11.5	11.5	13.0	14.0	14.0	13.5	13.0	11.5	9.6	11.7	81.8	12.4	3.7
30	46.6	ESE	4:44	20.0	14.0	15.0	15.5	15.0	14.0	13.5	13.0	11.5	8.3	11.7	71.2	10.7	4.6
Total													268.6	378.9	70.9	414.9	127.3
Mean				15.0	12.6	13.6	14.7	15.6	15.6	14.9	13.6	11.3	1991-2020 Normal				
Extreme	65.7	NW	18:27		1971- 2000 Normal for Soil Temperatures								214.7	378.9	56.7	373.1	120.9
Date	1				10.5	11.0	12.5	13.2	12.4	11.7	9.9	No. of Bright Sunshine days = 30					

Note: Red numbers indicate manual calculation Red cell indicate data not available

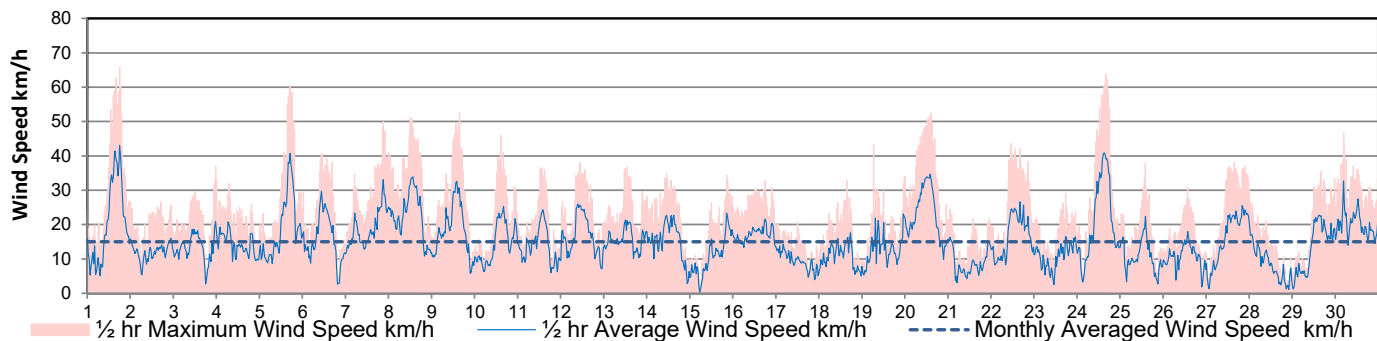
SRC proudly recognizes the following CRS supporters:



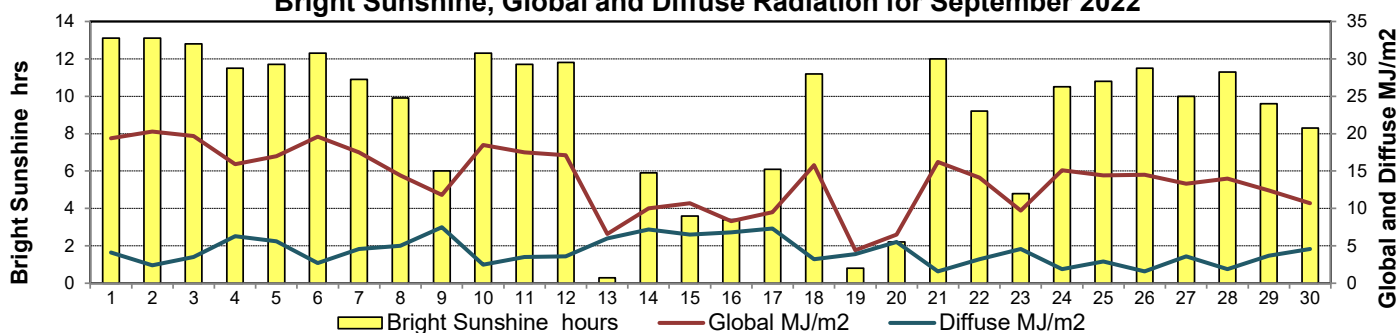
Agriculture and Agri-Food Canada / Agriculture et Agroalimentaire Canada



Wind Speed for September 2022

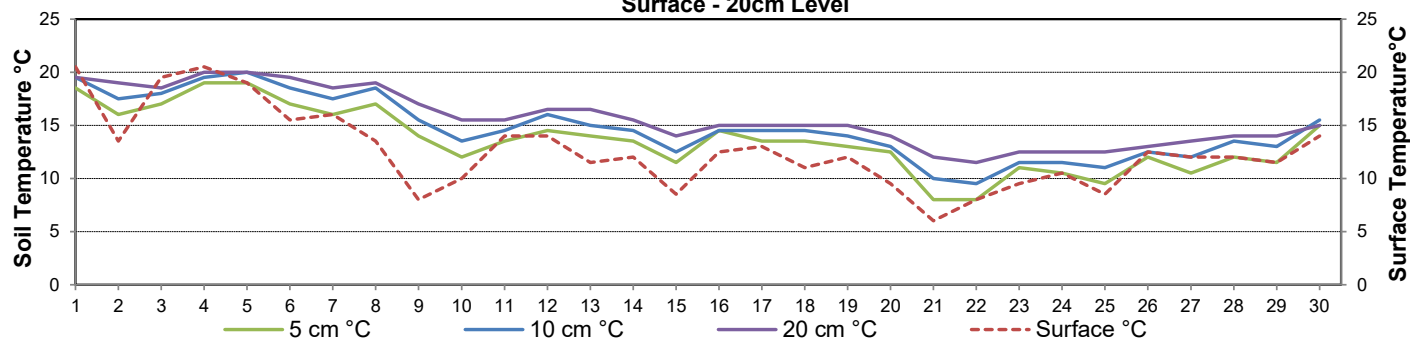


Bright Sunshine, Global and Diffuse Radiation for September 2022



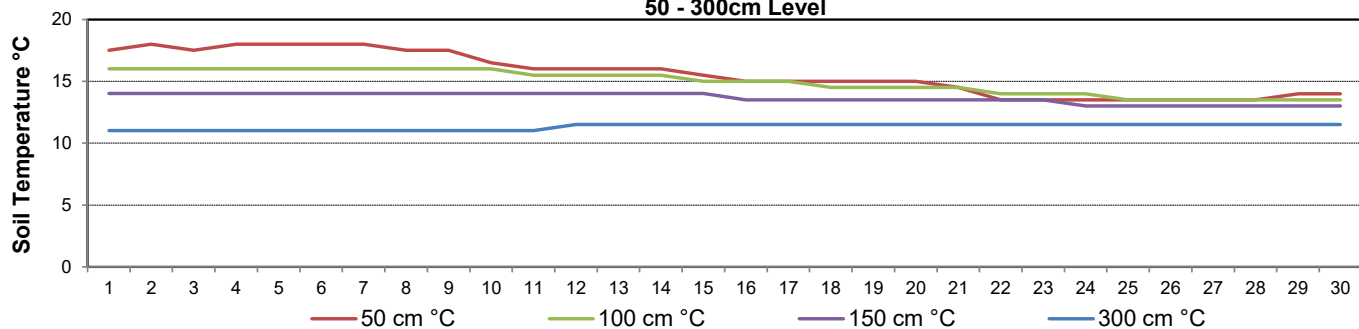
Soil Temperatures for September 2022

Surface - 20cm Level



Soil Temperatures for September 2022

50 - 300cm Level





SRC CLIMATE REFERENCE STATION DAILY DATA REPORT

SASKATOON STATION 4057180

52°09' N 106°36' W 497 m asl Estab. 1963

Preliminary **SEPTEMBER 2022**

Extreme Records for September

Max/Min Temperature °C				Precipitation - Monthly mm					Wind Monthly km/h				CRS Bright Sunshine - Monthly				
S'toon Area	Date	Site	S'toon CRS	Date	S'toon Area	Date	Site	S'toon CRS	Date	S'toon Airport	Date	S'toon CRS**	Date	Hours	Year	No. of Days	Year
36.1	22/1950	SF	35.6	04/1978	128.8	2006	SWT	128.4	2006	148 ^W	22/1967	89	1986	302.2	2011	30	1966*
-11.1	28,30/1908,'61	SE SF	-7.8	30/1974	0.6	1995	SA	0.8	1995, 2012					114.6	1986	20	1984

**1975 forward * more than one year

Notable Events for CRS Saskatoon - September						Saskatoon Area Stations			Glossary		
Element	Type	Day	New Record	Old Record	Year	SM	NWMP	c. 1892-1901	T	Trace of precipitation	
Temperature	Highest Maximum Daily	3	35.8	34.1	2009	SE	Eby	1901-1941	Normal	30 year average beginning with the decade	
		4	35.9	35.6	1978	US	Univ. of Sask.	1915-1964	SOG	Depth of snow-on-the-ground in cm	
		7	34.6	34.3	2011	S	Saskatoon	1941-1942	na	not available	
	Highest Minimum Daily	11	33.2	31.5	1981	SA	Saskatoon A	1942 -	Degree-days		
		4	17.5	16.3	2009	NRC	Nat. Res. Council	1952-1966	Tm	Mean Temperature	
		30	11.4	11.1	1967	SRC	Sask. Res. Council	1963-	Growing	(Tm-5°C); if Tm ≤ 5°C then GDD = 0	
	Highest Mean Daily	4	26.7	25.6	1978	SWT	S'toon Water Treatment Plant	1974 -	Heating	(18°C-Tm); if Tm ≤ 18°C then HDD = 0	
		7	23.7	23.6	2003	SC	S'toon Central Ave	1974-1989	Cooling	(Tm-18°C); if Tm ≥ 18°C then CDD = 0	
	No of Day >= 35C			2	1	19/8;	S1	Saskatoon 1	1976-1978	Extreme Cooling	(Tm-24°C); if Tm ≥ 24°C then CDD = 0
						1987;	S2	Saskatoon 2	1977-1990		
					1988;	K	S'toon Kernen Farm	1993-2004			
					2010	KCS	S'toon Kernen Farm CS	1996-			
						RCS	Environment Canada	2008-			
Degree-days	Highest Daily GDD	4	21.7	20.6	1978	SF	Sutherland Forestry	1943-1970			
		7	18.7	18.6	2003						
	Highest daily CDD	4	8.7	7.6	1978						
7		5.7	5.6	2003							
Highest Daily Extreme CDD	4	2.7	1.6	1978							
Precipitation	Fifth driest September on record										

SRC proudly recognizes the following CRS supporters:





SRC CLIMATE REFERENCE STATION DAILY DATA REPORT

SASKATOON STATION 4057180

52°09' N 106°36' W 497 m asl Estab. 1963

Preliminary September 2022

Day	2 meter Wind Speed			Soil Moisture at 0900 hrs (rounded to the 0.5%)																	
	Daily Average	Max ½ hr Avg	½ hr Extreme Max	10 cm	20 cm	50 cm															
	km/h	km/h	km/h	% by volume (soil type is Loam (45.5% Sand, 41.1% Silt, 13.3% Clay))																	
1	15.0	30.7	48	10.5	10.0	11.0															
2	9.0	11.4	22	10.5	9.5	10.5															
3	9.0	12.7	31	10.5	10.0	10.5															
4	10.0	14.9	28	11.0	9.5	11.0															
5	13.0	29.8	44	10.5	9.5	11.0															
6	12.0	21.5	34	10.5	10.0	10.5															
7	13.0	24.0	38	10.5	9.0	10.5															
8	16.0	24.7	39	10.5	9.5	10.0															
9	14.0	23.9	41	10.5	9.0	10.5															
10	11.0	19.5	36	9.5	9.0	10.5															
11	10.0	19.0	30	10.0	9.0	9.5															
12	12.0	19.1	30	10.0	9.0	10.0															
13	11.0	14.2	26	10.0	8.5	9.5															
14	11.0	17.4	28	10.0	8.5	10.0															
15	8.0	18.2	28	9.5	8.5	10.0															
16	13.0	16.6	26	9.5	9.0	10.0															
17	7.0	10.7	18	9.5	8.5	9.5															
18	8.0	14.1	27	9.5	8.5	9.5															
19	9.0	16.4	32	9.5	8.5	9.5															
20	17.0	25.2	41	9.5	8.5	9.5															
21	7.0	10.8	20	8.5	8.5	9.0															
22	10.0	17.6	33	8.5	8.5	9.5															
23	8.0	12.3	23	9.0	8.5	9.5															
24	15.0	29.4	49	9.0	8.5	9.0															
25	8.0	17.2	30	9.0	8.5	9.0															
26	8.0	14.1	25	9.5	8.5	9.5															
27	10.0	18.2	37	9.5	8.5	9.0															
28	6.0	12.5	22	9.5	8.5	9.5															
29	9.0	17.4	28	9.0	8.5	9.5															
30	15.0	24.3	36	9.5	8.0	9.5															
Total																					
Mean				10	9	9.9															
Extreme	17.0	30.7	49.4	11	10	11															
Date	20	1	24	4	1	1															

Note: Red numbers indicate manual calculation; Red cell indicate data not available

SRC proudly recognizes the following CRS supporters:

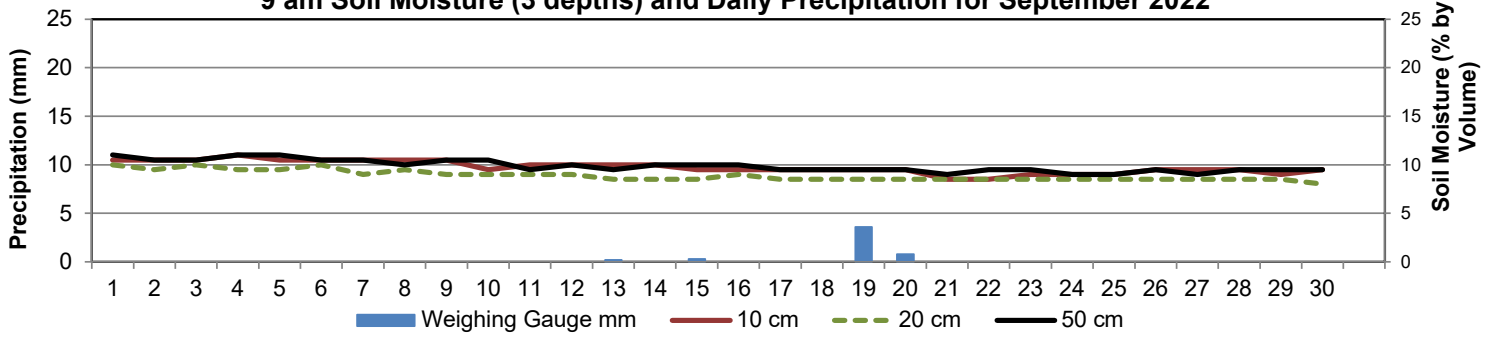


Agriculture and Agri-Food Canada

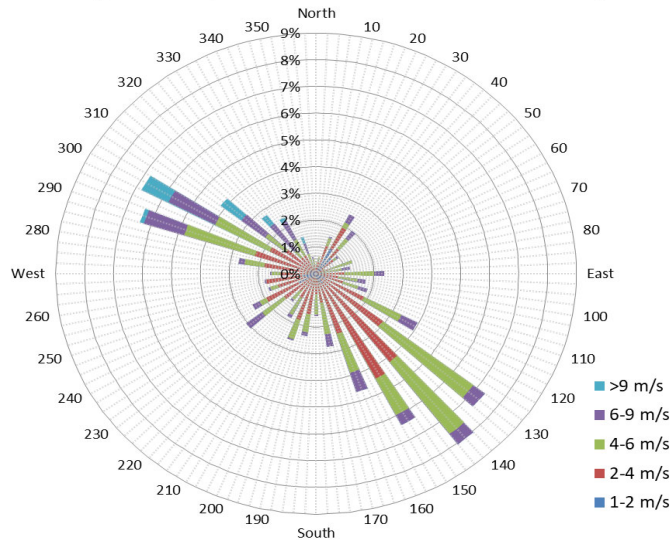
Agriculture et Agroalimentaire Canada



9 am Soil Moisture (3 depths) and Daily Precipitation for September 2022



10 minute Average Wind Speed and Direction Saskatoon September 2022



1/2 hr Maximum Wind Speed and Direction Saskatoon September 2022

