



SRC CLIMATE REFERENCE STATION DAILY DATA REPORT

CONSERVATION LEARNING CENTRE

Saskatchewan 53.03°N 105.77°W 451m asl Estab. 2011

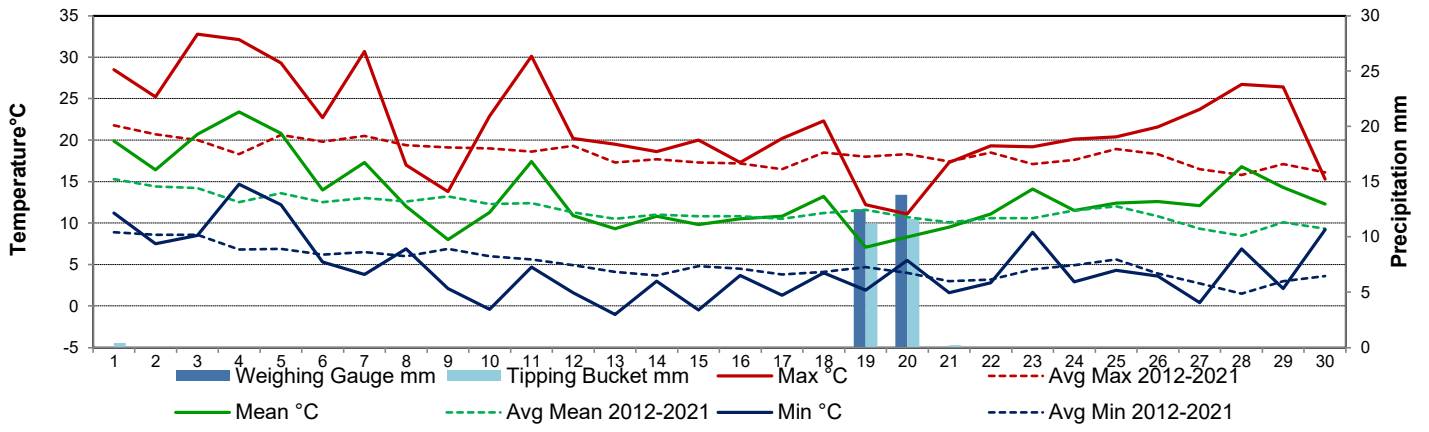
Preliminary **September 2022**

Day	Temperature						Degree-days			Precipitation			Relative Humidity		Station Pressure <i>corrected to sea level</i>	
	Max	Avg Max	Min	Avg Min	Mean	Avg Mean	Growing	Heating	Cooling	Weighing Gauge	Tipping Bucket	Snow-on-Ground 0900h	Max ½ hr Avg	Min ½ hr Avg	Max ½ hr Avg	Min ½ hr Avg
	°C	2012-2021	°C	2012-2021	°C	2012-2021	5°C base	18°C base	18°C base	mm	mm	cm	%	%	mbar	mbar
1	28.5	21.8	11.2	8.9	19.9	15.3	14.9	0.0	1.9	0.0	0.4	0	81	32	1011	1001
2	25.2	20.7	7.5	8.6	16.4	14.4	11.4	1.6	0.0	0.0	0.0	0	94	30	1018	1012
3	32.8	20.0	8.5	8.6	20.7	14.2	15.7	0.0	2.7	0.0	0.0	0	84	26	1017	1011
4	32.1	18.3	14.7	6.8	23.4	12.5	18.4	0.0	5.4	0.0	0.0	0	73	33	1011	1004
5	29.3	20.6	12.2	6.9	20.8	13.6	15.8	0.0	2.8	0.0	0.0	0	94	41	1011	1001
6	22.7	19.8	5.3	6.2	14.0	12.5	9.0	4.0	0.0	0.0	0.0	0	91	30	1019	1012
7	30.7	20.5	3.8	6.5	17.3	13.0	12.3	0.7	0.0	0.0	0.0	0	96	32	1018	1000
8	17.0	19.4	6.9	6.0	12.0	12.6	7.0	6.0	0.0	0.0	0.0	0	91	46	1012	1005
9	13.8	19.1	2.1	6.9	8.0	13.2	3.0	10.0	0.0	0.0	0.0	-	97	56	1015	1013
10	22.9	19.0	-0.4	6.0	11.3	12.3	6.3	6.7	0.0	0.0	0.0	0	100	26	1016	1011
11	30.1	18.6	4.7	5.6	17.4	12.4	12.4	0.6	0.0	0.0	0.0	0	80	20	1013	1009
12	20.2	19.3	1.6	4.9	10.9	11.3	5.9	7.1	0.0	0.0	0.0	-	98	33	1018	1010
13	19.5	17.3	-1.0	4.1	9.3	10.5	4.3	8.7	0.0	0.0	0.0	-	100	39	1018	1015
14	18.6	17.7	3.0	3.7	10.8	11.0	5.8	7.2	0.0	0.0	0.0	-	97	41	1016	1014
15	20.0	17.3	-0.5	4.8	9.8	10.8	4.8	8.2	0.0	0.0	0.0	-	100	52	1019	1017
16	17.3	17.2	3.7	4.5	10.5	10.8	5.5	7.5	0.0	0.0	0.0	-	100	63	1017	1010
17	20.2	16.5	1.3	3.8	10.8	10.5	5.8	7.2	0.0	0.0	0.0	-	100	52	1010	1006
18	22.3	18.5	4.0	4.1	13.2	11.2	8.2	4.8	0.0	0.0	0.0	-	98	32	1009	1007
19	12.2	18.0	1.9	4.7	7.1	11.6	2.1	10.9	0.0	12.5	11.2	-	100	92	1009	1004
20	11.1	18.3	5.5	4.0	8.3	10.7	3.3	9.7	0.0	13.8	11.6	-	100	85	1019	1009
21	17.3	17.4	1.6	3.0	9.5	10.1	4.5	8.5	0.0	0.0	0.2	0	99	41	1025	1019
22	19.3	18.5	2.8	3.2	11.1	10.6	6.1	6.9	0.0	0.0	0.0	-	92	33	1021	1006
23	19.2	17.1	8.9	4.4	14.1	10.6	9.1	3.9	0.0	0.0	0.0	-	92	61	1006	1004
24	20.1	17.6	2.9	4.9	11.5	11.5	6.5	6.5	0.0	0.0	0.0	-	95	34	1017	1006
25	20.4	18.9	4.3	5.6	12.4	12.0	7.4	5.6	0.0	0.0	0.0	-	86	30	1021	1016
26	21.6	18.3	3.6	3.9	12.6	10.8	7.6	5.4	0.0	0.0	0.0	-	95	36	1020	1015
27	23.7	16.5	0.4	2.7	12.1	9.3	7.1	5.9	0.0	0.0	0.0	0	100	31	1020	1015
28	26.7	15.8	6.9	1.5	16.8	8.5	11.8	1.2	0.0	0.0	0.0	-	99	36	1015	1011
29	26.4	17.1	2.1	3.0	14.3	10.1	9.3	3.7	0.0	0.0	0.0	-	100	36	1018	1013
30	15.3	16.1	9.2	3.6	12.3	9.3	7.3	5.7	0.0	0.0	0.0	0	97	84	1025	1018
Total							248.6	154.2	12.8	26.3	23.4					
Avg	21.9	18.4	4.6	5.1	13.3	11.6	<i>Monthly 2012 - 2021 Average</i>			28.3	<i>2012-2021 Average</i>					
Extreme	32.8	33.8	-1.0	-7.3			202.6	196.3	3.5	271.6	<i>2022 Cumulative ppt</i>		100	20	1025	1000
Date	3	2011	13	2018						323.6	<i>Cumulative Average</i>		10	11	21	7

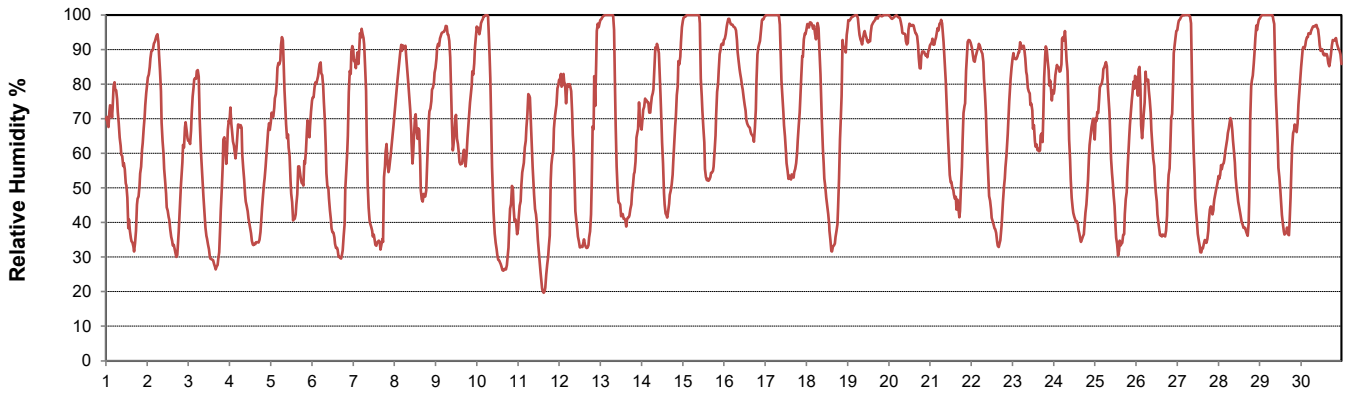
SRC proudly recognizes the following CRS supporters:



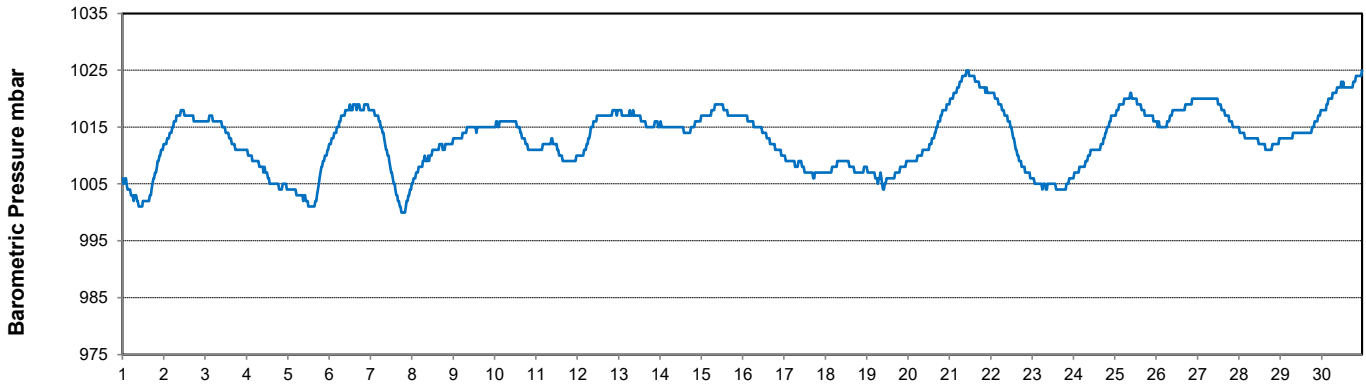
Temperature and Precipitation for September 2022



Relative Humidity for September 2022



Barometric Pressure Corrected to Sea Level for September 2022





SRC CLIMATE REFERENCE STATION DAILY DATA REPORT

CONSERVATION LEARNING CENTRE

Saskatchewan 53.03°N 105.77°W 451m asl Estab. 2011

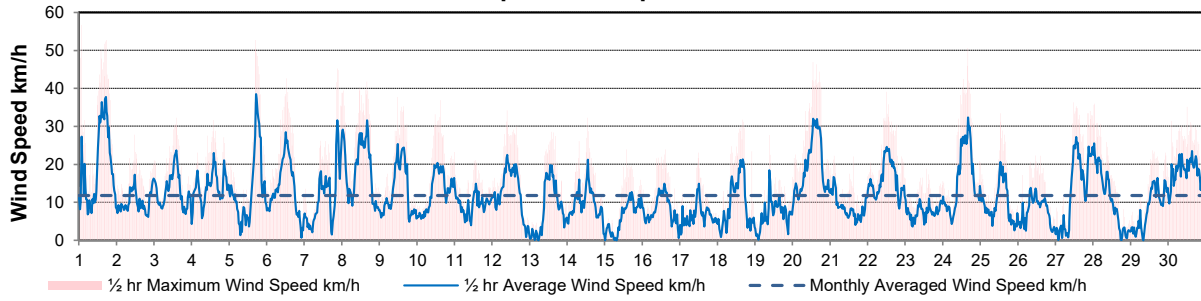
Preliminary **September 2022**

Day	Wind Gust (10 meter)			Wind Speed (10 meters)	Soil Temperatures at 0900hrs								Radiation				
	Max	Direction	Time	Daily Average	Surface	5 cm	10 cm	20 cm	50 cm	100 cm	150 cm	300 cm	Bright Sunshine	Possible	% Possible	Global	Diffuse
	km/h			km/h	°C	°C	°C	°C	°C	°C	°C	°C	hours	hours		MJ/m ²	MJ/m ²
1	56.7	N	1:31	19.1	21.0	16.5	17.5	16.5	15.5	13.5	12.0	7.5	12.6	13.6	92.4	18.8	4.9
2	27.8	NW	11:37	10.4	14.0	14.5	15.5	16.0	15.5	13.5	12.0	7.5	13.1	13.6	96.5	19.6	2.4
3	32.2	S	14:11	13.0	18.5	14.0	15.0	15.5	15.0	13.5	12.0	7.5	12.4	13.5	91.9	18.2	4.4
4	31.6	S	14:26	14.1	20.5	15.0	16.0	15.5	15.0	13.5	12.0	8.0	12.2	13.4	90.8	16.8	5.0
5	52.7	NW	16:58	13.6	18.0	16.0	16.5	16.0	15.0	13.5	12.0	8.0	9.7	13.4	72.6	14.1	6.7
6	42.6	NW	12:58	13.7	14.5	14.5	15.5	15.5	15.0	13.5	12.0	8.0	12.5	13.3	94.0	19.2	2.2
7	45.2	NNW	21:14	11.6	14.5	12.5	14.0	14.5	15.0	13.5	12.0	8.0	10.2	13.2	77.1	15.5	5.1
8	41.8	NW	16:04	18.6	12.5	14.0	15.0	15.0	14.5	13.5	12.0	8.0	9.0	13.2	68.4	12.6	4.7
9	37.7	NW	11:47	12.9	8.5	12.0	13.0	14.0	14.5	13.5	12.0	8.0	2.9	13.1	22.1	9.0	6.9
10	36.9	WSW	15:00	12.7	10.0	10.5	11.5	13.0	14.0	13.5	12.0	8.0	12.6	13.0	96.7	18.1	2.4
11	23.2	SW	0:06	9.5	11.0	11.0	12.0	13.0	13.5	13.0	12.0	8.0	11.9	13.0	91.8	16.4	4.0
12	34.1	NE	9:34	12.7	12.5	12.5	13.0	13.5	13.5	13.0	12.0	8.0	12.2	12.9	94.6	17.6	2.4
13	28.5	S	14:05	8.0	9.5	10.0	11.5	12.5	13.5	13.0	12.0	8.0	8.9	12.8	69.4	12.6	7.4
14	32.2	S	13:09	9.7	10.5	12.0	12.5	12.5	13.0	13.0	12.0	8.0	8.3	12.8	65.1	13.0	4.3
15	23.9	SSE	14:23	6.1	6.0	10.0	11.0	12.5	13.0	12.5	12.0	8.0	10.1	12.7	79.7	15.6	3.9
16	23.9	SE	14:47	8.1	12.5	12.0	12.0	12.5	13.0	12.5	11.5	8.0	0.0	12.6	0.0	6.0	5.6
17	23.1	E	12:05	6.7	8.0	10.0	11.0	12.0	12.5	12.5	11.5	8.0	8.9	12.6	70.9	13.3	6.3
18	31.7	WSW	16:30	9.6	11.5	11.0	11.5	12.0	12.5	12.5	11.5	8.0	11.1	12.5	88.9	15.7	2.7
19	27.6	ENE	9:16	6.9	9.0	10.5	11.0	12.0	12.5	12.5	11.5	8.5	0.0	12.4	0.0	2.4	2.2
20	46.9	NW	13:29	19.5	9.5	11.0	11.5	11.5	12.0	12.0	11.5	8.0	0.8	12.3	6.5	5.0	4.6
21	22.2	NW	2:40	8.8	6.5	9.0	10.0	11.0	12.0	12.0	11.5	8.5	10.6	12.3	86.4	13.9	2.3
22	39.0	SSW	12:27	16.2	7.5	8.5	9.0	10.5	11.5	12.0	11.5	8.5	11.3	12.2	92.6	15.6	1.8
23	18.9	SW	13:32	7.5	11.0	10.0	10.5	11.0	11.5	12.0	11.5	8.5	8.3	12.1	68.4	12.1	4.4
24	50.6	NW	16:21	15.9	8.5	9.5	10.0	11.0	11.5	11.5	11.5	8.5	11.0	12.1	91.1	14.8	1.9
25	33.4	WNW	12:57	9.6	8.0	9.0	9.5	11.0	11.5	11.5	11.0	8.5	10.2	12.0	85.0	13.2	4.7
26	22.3	NNW	11:22	7.7	11.5	10.0	10.5	11.0	11.5	11.5	11.0	8.5	11.4	11.9	95.6	14.3	1.5
27	36.3	S	11:53	13.5	7.0	8.5	9.5	10.5	11.5	11.5	11.0	8.5	9.5	11.9	80.1	13.0	3.0
28	35.9	SSE	1:02	10.8	11.5	10.5	10.5	11.0	11.5	11.5	11.0	8.5	11.2	11.8	95.0	13.5	1.7
29	23.6	E	14:17	8.5	8.5	9.5	10.0	11.0	11.5	11.5	11.0	8.5	10.6	11.7	90.4	12.6	3.5
30	35.1	ESE	12:10	18.1	9.5	11.5	11.5	11.5	11.5	11.0	11.0	8.5	0.0	11.7	0.0	3.4	3.2
Total													273.5	379.5	72.1	405.9	116.1
Mean				11.8	11.4	11.5	12.3	12.8	13.1	12.6	11.7	8.1					
Extreme	56.7	N	1:31														
Date	1																

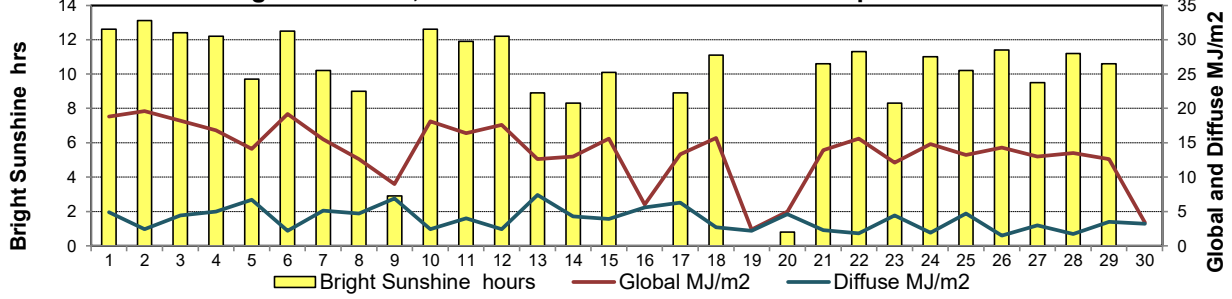
GLOSSARY OF TERMS

Degree-days	Radiation
Tm Mean Temperature	Bright Sunshine is the unobstructed direct radiation from the sun, as opposed to the shading of a location by clouds or by other atmospheric obstructions.
Growing (Tm-5°C); if Tm ≤ 5°C then GDD = 0	
Heating (18°C-Tm); if Tm ≥ 18°C then HDD = 0	Diffuse is radiation reaching the earth's surface after having been scattered from the direct solar beam
Cooling (Tm-18°C); if Tm ≤ 18°C then CDD = 0	Global is the sum of the direct solar and diffuse radiation
T Trace of Precipitation	Relative Humidity The ratio of the air's water vapour content to its water vapour capacity which changes with temperature.
SOG Depth of snow-on-the-ground	
Red Cell no data available	Air Pressure The force exerted by the weight of a column of air above a given point
Red Number manual calculation	Wind Gust The daily highest instantaneous value recorded irrespective of direction and/or duration

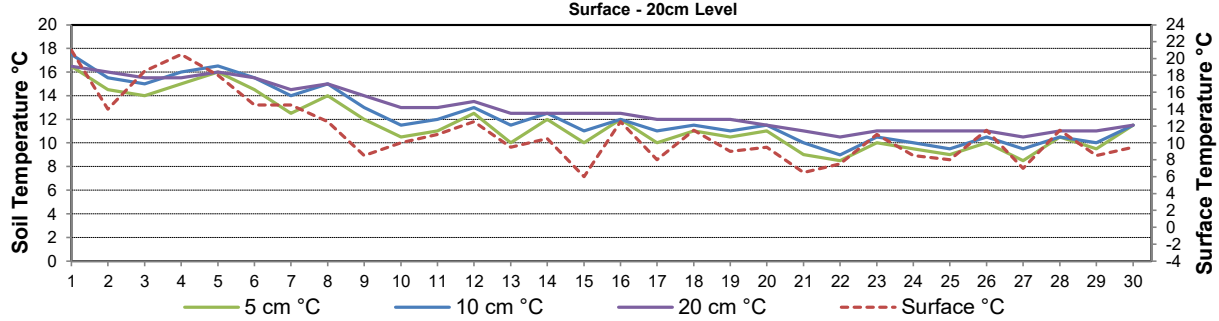
Wind Speed for September 2022



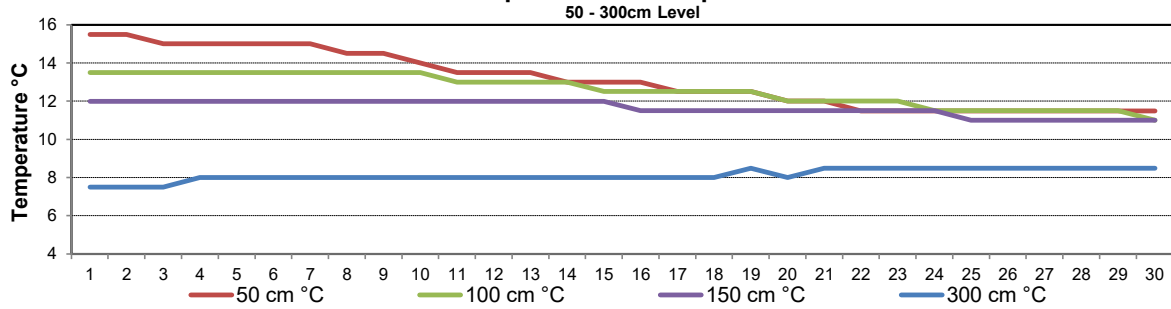
Bright Sunshine, Global and Diffuse Radiation for September 2022



Soil Temperatures for September 2022



Soil Temperatures for September 2022





SRC CLIMATE REFERENCE STATION DAILY DATA REPORT

CONSERVATION LEARNING CENTRE

Saskatchewan 53.03°N 105.77°W 451m asl Estab. 2011

September 2022

Day	2 meter Wind Speed			Soil Moisture at 0900 hrs (rounded to the 0.5%)			Comments
	Daily Average	Max ½ hr Avg	½ hr Extreme Max	10 cm	20 cm	50 cm	
	km/h	km/h	km/h	% by volume (soil type is Clay Loam)			
1	11.0	22.4	41.4	22.0	25.5	38.5	
2	5.0	9.1	17.6	22.0	24.5	38.5	
3	6.0	14.5	22.5	20.5	24.5	39.5	
4	7.0	14.1	20.4	20.5	25.0	37.0	
5	7.0	22.8	32.9	20.0	24.5	37.5	
6	8.0	17.3	28.3	20.5	24.5	37.0	
7	6.0	19.0	30.8	20.0	24.0	37.0	
8	12.0	18.8	26.6	19.5	23.0	36.5	
9	8.0	15.8	26.4	20.5	23.5	37.5	
10	8.0	13.7	22.9	19.0	24.0	36.0	
11	3.0	9.4	15.6	19.5	23.5	37.0	
12	7.0	14.7	23.3	20.5	23.5	36.0	
13	4.0	12.7	18.9	20.0	23.5	35.0	
14	5.0	12.7	19.9	20.0	23.5	36.0	
15	3.0	6.9	17.2	19.5	23.5	35.5	
16	4.0	8.3	17.6	19.5	23.5	36.0	
17	2.0	10.4	16.4	18.5	23.0	35.5	
18	5.0	14.3	22.5	18.5	23.0	34.5	
19	3.0	12.6	22.0	19.5	23.0	35.5	
20	12.0	19.6	29.1	20.5	23.5	36.0	
21	5.0	10.3	17.4	25.5	21.5	35.0	
22	10.0	15.4	24.5	25.5	23.5	34.0	
23	2.0	7.5	13.3	25.5	22.0	34.5	
24	10.0	20.0	32.5	24.5	23.5	34.5	
25	5.0	12.9	20.6	25.0	23.0	34.0	
26	3.0	9.5	16.8	25.0	24.0	35.0	
27	7.0	17.2	25.0	25.0	22.5	34.0	
28	5.0	15.0	22.4	24.0	22.5	34.0	
29	3.0	11.0	18.1	23.5	24.0	34.0	
30	13.0	17.0	25.2	25.0	24.5	35.0	
31							
Total							
Mean				22	24	35.9	
Extreme	13.0	22.8	41.4	25.5	25.5	39.5	
Date	11.5	16	16.5	11	16.5	15.5	

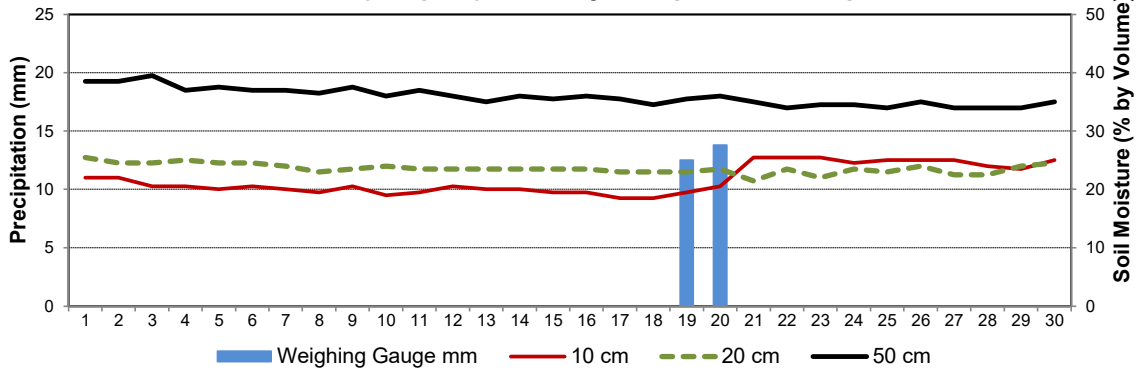
SRC proudly recognizes the following CRS supporters:



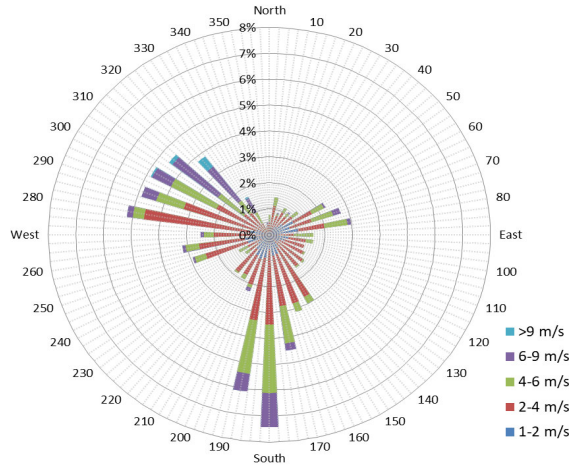
Agriculture and Agri-Food Canada / Agriculture et Agroalimentaire Canada



9 am Soil Moisture (3 depths) and Daily Precipitation for September 2022



10 minute Average Wind Speed and Direction CLC September 2022



1/2 hr Maximum Wind Speed and Direction CLC September 2022

