



SRC CLIMATE REFERENCE STATION DAILY DATA REPORT

CONSERVATION LEARNING CENTRE

Saskatchewan 53.03°N 105.77°W Estab. 2011

Preliminary **September 2019**

Day	Temperature			Degree-days			Precipitation			Relative Humidity		Station Pressure <i>corrected to sea level</i>	
	Max	Min	Mean	Growing	Heating	Cooling	Weighing Gauge	Tipping Bucket	Snow-on-Ground 0900h	Max ½ hr Avg	Min ½ hr Avg	Max ½ hr Avg	Min ½ hr Avg
	°C	°C	°C	5°C base	18°C base	18°C base	mm	mm	cm	%	%	mbar	mbar
1	20.1	2.6	11.4	6.4	6.6	0.0	0.3	0.0	-	100	45	1021	1017
2	12.5	8.5	10.5	5.5	7.5	0.0	16.2	14.8	-	100	83	1018	1007
3	24.4	7.4	15.9	10.9	2.1	0.0	0.0	0.0	-	100	42	1016	1012
4	16.9	6.4	11.7	6.7	6.3	0.0	0.7	0.8	-	100	77	1013	1010
5	21.9	8.8	15.4	10.4	2.6	0.0	0.0	0.2	-	100	49	1020	1012
6	20.1	5.0	12.6	7.6	5.4	0.0	0.0	0.0	-	100	44	1023	1020
7	21.6	5.9	13.8	8.8	4.2	0.0	0.0	0.0	-	100	44	1022	1015
8	19.8	10.8	15.3	10.3	2.7	0.0	0.0	0.0	-	95	59	1017	1015
9	11.7	8.4	10.1	5.1	7.9	0.0	0.0	0.0	-	99	87	1017	1016
10	9.6	7.0	8.3	3.3	9.7	0.0	6.5	5.8	-	100	95	1022	1017
11	12.0	7.7	9.9	4.9	8.1	0.0	1.6	1.6	-	100	96	1024	1022
12	14.8	6.5	10.7	5.7	7.3	0.0	0.0	0.2	-	100	75	1023	1017
13	20.3	2.1	11.2	6.2	6.8	0.0	0.1	0.2	-	100	50	1017	1007
14	23.5	4.6	14.1	9.1	3.9	0.0	0.0	0.0	-	100	44	1006	1005
15	26.2	7.1	16.7	11.7	1.3	0.0	0.0	0.0	-	100	34	1006	1004
16	32.1	7.5	19.8	14.8	0.0	1.8	0.0	0.0	-	100	35	1005	999
17	25.5	13.6	19.6	14.6	0.0	1.6	0.0	0.0	-	97	48	1004	1000
18	20.0	7.3	13.7	8.7	4.3	0.0	0.0	0.0	-	91	35	1013	1003
19	19.8	4.8	12.3	7.3	5.7	0.0	0.2	0.0	-	99	58	1014	1007
20	20.7	11.1	15.9	10.9	2.1	0.0	29.5	25.8	-	100	52	1008	1005
21	17.9	5.7	11.8	6.8	6.2	0.0	0.0	0.0	-	100	52	1009	1006
22	26.0	5.5	15.8	10.8	2.2	0.0	0.0	0.0	-	96	35	1006	1003
23	19.9	8.1	14.0	9.0	4.0	0.0	0.0	0.0	-	92	29	1003	999
24	15.6	7.1	11.4	6.4	6.6	0.0	0.5	0.4	-	78	48	1004	1001
25	16.3	2.5	9.4	4.4	8.6	0.0	5.0	4.6	-	97	37	1008	1004
26	11.8	0.1	6.0	1.0	12.0	0.0	0.0	0.0	-	100	48	1006	1001
27	6.4	-0.5	3.0	0.0	15.0	0.0	0.0	0.0	-	97	54	1020	1005
28	6.5	0.8	3.7	0.0	14.3	0.0	0.0	0.2	-	87	56	1027	1020
29	6.0	0.6	3.3	0.0	14.7	0.0	0.4	0.2	-	96	48	1028	1024
30	3.1	0.1	1.6	0.0	16.4	0.0	5.3	4.8	-	100	89	1024	1019
Total				207.3	194.5	3.4	66.3	59.6					
Avg	17.4	5.8	11.6				275.5	Cumulative ppt					
Extreme	32.1	-0.5					29.5	25.8	0	100	29	1028	999
Date	16	27					20	20		1	23	29	16

SRC proudly recognizes the following CRS supporters:

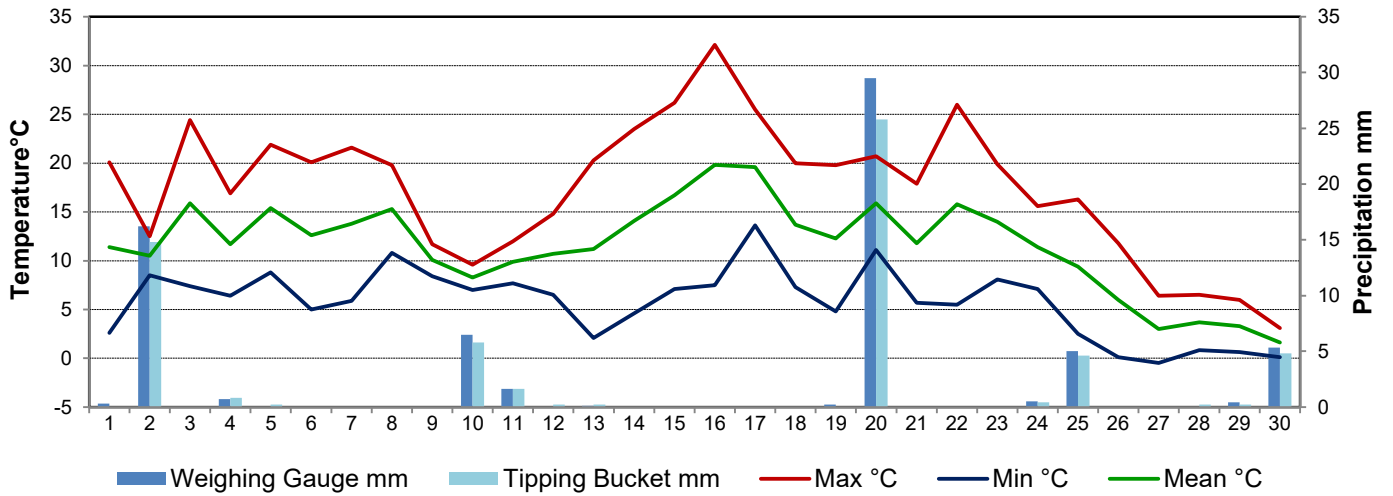


Agriculture and Agri-Food Canada

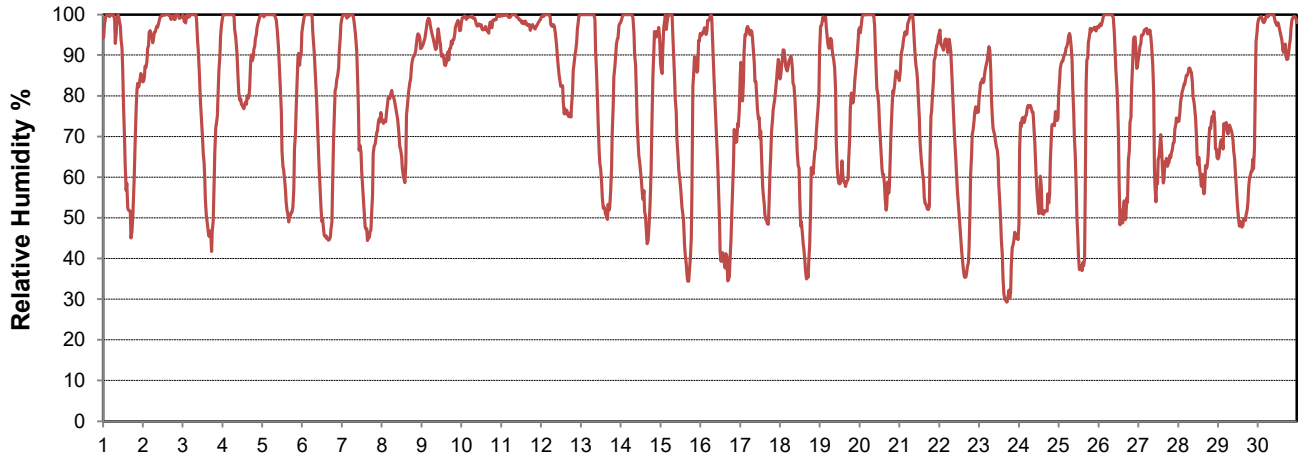
Agriculture et Agroalimentaire Canada



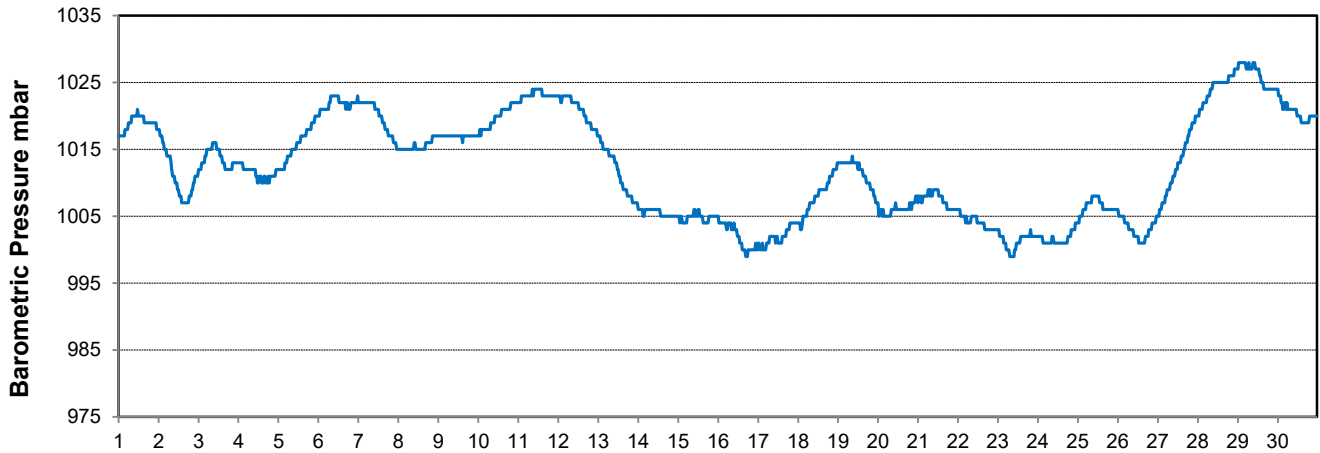
Temperature and Precipitation for September 2019



Relative Humidity for September 2019



Barometric Pressure Corrected to Sea Level for September 2018





SRC CLIMATE REFERENCE STATION DAILY DATA REPORT

CONSERVATION LEARNING CENTRE

Saskatchewan 53.03°N 105.77°W Estab. 2011

Preliminary

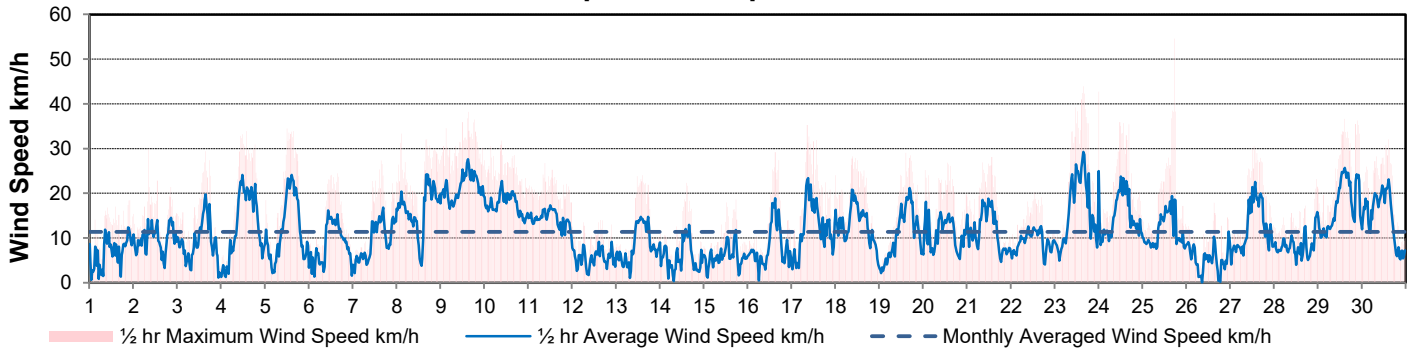
September 2019

Day	Wind Gust			Soil Temperatures at 0900hrs								Radiation				
	Max	Direction	Time	Surface	5 cm	10 cm	20 cm	50 cm	100 cm	150 cm	300 cm	Bright Sunshine	Possible	% Possible	Global	Diffuse
	km/h			°C	°C	°C	°C	°C	°C	°C	°C	hours	hours		MJ/m ²	MJ/m ²
1	18.4	ESE	22:04	9.0	11.5	12.0	13.0	13.5	12.5	11.0	7.0	8.5	13.7	62.2	14.5	5.4
2	30.0	E	8:18	10.0	12.5	12.5	13.0	13.0	12.5	11.0	7.0	0.0	13.6	0.0	2.2	2.0
3	29.4	SW	15:52	10.5	12.0	12.0	12.5	12.5	12.0	11.0	7.0	8.6	13.5	63.6	17.1	4.7
4	33.9	ENE	14:22	13.0	12.0	12.5	13.0	13.0	12.0	11.0	7.5	5.1	13.5	37.9	8.9	6.2
5	34.5	NW	12:00	13.0	13.0	13.0	13.0	12.5	12.0	11.0	7.0	6.8	13.4	50.8	13.0	6.2
6	24.5	N	15:31	12.0	11.5	12.0	13.0	13.0	12.0	11.0	7.5	12.3	13.3	92.3	19.0	3.0
7	27.3	S	15:47	10.5	11.5	12.0	13.0	13.0	12.0	11.0	7.5	8.6	13.3	64.9	14.4	6.9
8	33.3	SW	2:34	14.0	13.0	13.0	13.0	12.5	12.0	11.0	7.5	3.8	13.2	28.8	10.3	8.0
9	38.2	ENE	15:17	11.0	13.0	13.0	13.0	12.5	11.5	10.5	7.0	0.0	13.1	0.0	3.5	3.1
10	31.8	ENE	9:37	7.5	11.5	11.5	12.5	12.5	11.5	10.5	7.0	0.0	13.1	0.0	5.4	4.9
11	26.7	ENE	9:05	8.5	11.0	11.0	11.5	11.5	11.5	10.5	6.5	0.0	13.0	0.0	3.2	2.9
12	14.0	ESE	15:38	11.0	11.0	11.0	11.5	11.0	11.0	10.5	6.5	0.0	12.9	0.0	6.3	5.7
13	24.1	SSE	14:46	8.5	10.0	10.5	11.5	11.5	11.0	10.5	7.0	11.4	12.8	88.8	17.0	2.5
14	22.3	WSW	14:40	10.0	10.5	11.0	12.0	12.0	11.5	10.5	7.5	10.6	12.8	83.0	14.8	5.4
15	18.6	S	17:41	12.0	11.5	11.5	12.5	12.0	11.5	10.5	7.5	11.7	12.7	92.1	14.5	4.9
16	29.2	ESE	15:01	13.5	11.5	12.0	12.5	12.0	11.5	10.5	7.5	11.6	12.6	91.8	14.4	4.9
17	35.2	NNW	8:51	15.5	13.5	13.5	13.5	12.5	11.5	10.5	7.5	7.4	12.6	58.9	11.7	5.4
18	28.3	NNW	9:39	14.0	13.5	14.0	13.5	12.5	11.5	10.5	7.5	10.7	12.5	85.6	15.6	3.2
19	29.1	E	14:44	9.5	11.5	12.0	13.0	12.5	11.5	10.5	7.5	2.5	12.4	20.1	7.8	6.0
20	26.8	WSW	13:59	12.0	12.5	12.5	13.0	12.5	11.5	10.5	7.5	8.4	12.4	68.0	14.0	4.5
21	28.1	NNW	13:53	9.5	11.5	12.0	13.0	12.5	11.5	10.5	7.5	7.7	12.3	62.7	12.5	5.0
22	20.2	SW	13:29	11.0	10.5	11.0	12.0	12.5	11.5	10.5	7.5	11.7	12.2	95.7	15.1	1.9
23	43.9	WNW	15:47	13.5	11.0	11.5	12.0	12.5	11.5	10.5	7.5	6.7	12.2	55.1	11.0	5.2
24	42.7	NW	0:18	10.0	11.0	11.5	12.0	12.0	11.5	10.5	7.5	4.7	12.1	38.9	9.3	5.3
25	54.6	NW	17:48	6.0	9.5	10.0	11.5	12.0	11.5	10.5	8.0	8.7	12.0	72.4	13.1	2.4
26	17.9	NNE	15:08	3.0	8.5	9.5	10.5	11.5	11.5	10.5	8.0	7.2	12.0	60.3	10.4	6.1
27	30.6	NNW	13:26	3.5	8.0	9.0	10.0	11.5	11.5	10.5	8.0	1.3	11.9	10.9	5.7	4.9
28	23.1	NE	23:30	2.5	7.5	8.0	9.5	11.0	11.0	10.5	8.0	0.9	11.8	7.6	5.8	5.0
29	36.6	E	14:58	2.0	7.5	8.0	9.0	10.5	11.0	10.5	8.0	0.2	11.7	1.7	6.3	5.6
30	32.0	ENE	14:58	0.5	7.0	7.5	8.5	10.0	11.0	10.5	7.5	0.3	11.7	2.6	4.5	4.0
Total												177.4	380.0	46.7	321.3	141.2
Mean				9.6	11.0	11.4	12.1	12.1	11.6	10.6	7.4					
Extreme	54.6	NW	17:48													
Date	25															

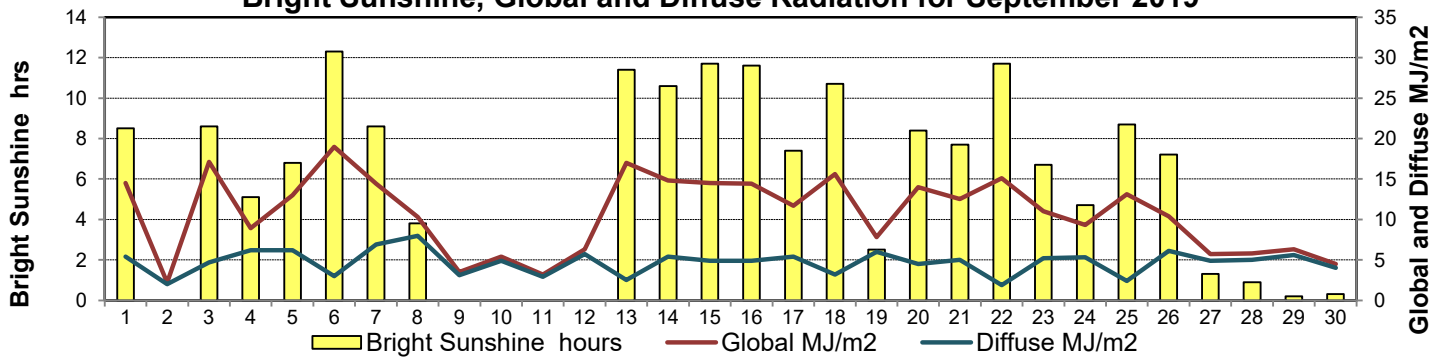
GLOSSARY OF TERMS

Degree-days	Radiation
Tm Mean Temperature	Bright Sunshine is the unobstructed direct radiation from the sun, as opposed to the shading of a location by clouds or by other atmospheric obstructions.
Growing (Tm-5°C); if Tm ≤ 5°C then GDD = 0	
Heating (18°C-Tm); if Tm ≥ 18°C then HDD = 0	Diffuse is radiation reaching the earth's surface after having been scattered from the direct solar beam
Cooling (Tm-18°C); if Tm ≤ 18°C then CDD = 0	Global is the sum of the direct solar and diffuse radiation
T Trace of Precipitation	Relative Humidity The ratio of the air's water vapour content of its water vapour capacity which changes with temperature.
SOG Depth of snow-on-the-ground	
Red Cell no data available	Air Pressure The force exerted by the weight of a column of air above a given point
Red Number manual calculation	Wind Gust The daily highest instantaneous value recorded irrespective of direction and/or duration

Wind Speed for September 2019

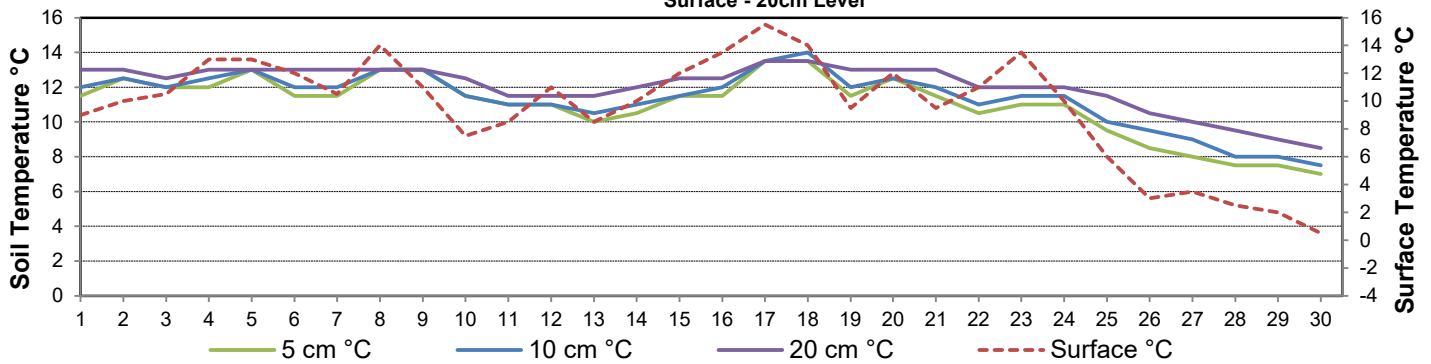


Bright Sunshine, Global and Diffuse Radiation for September 2019



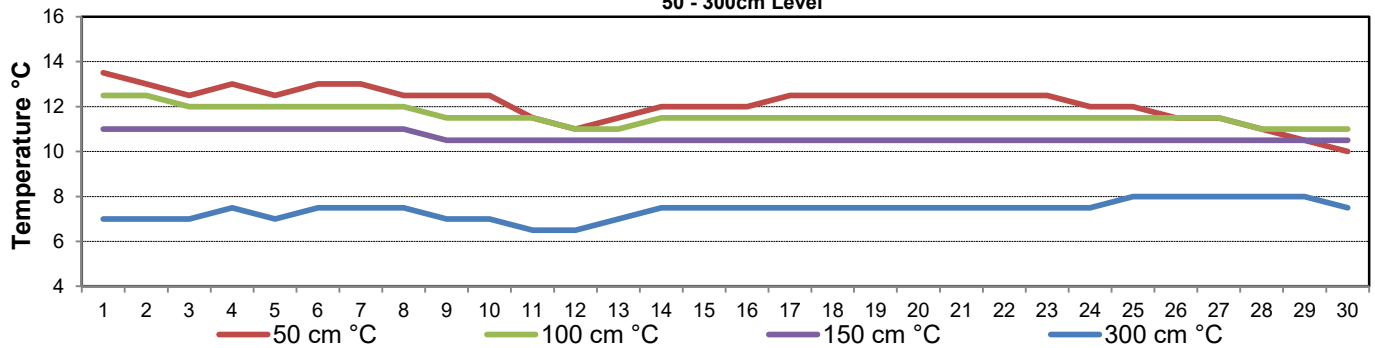
Soil Temperatures for September 2019

Surface - 20cm Level



Soil Temperatures for September 2018

50 - 300cm Level





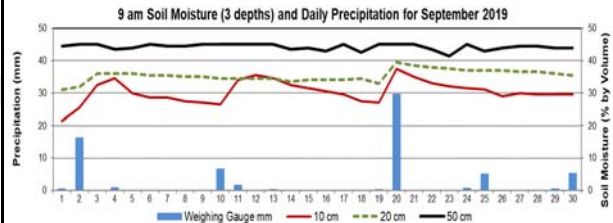
SRC CLIMATE REFERENCE STATION DAILY DATA REPORT

CONSERVATION LEARNING CENTRE

Saskatchewan 53.03°N 105.77°W Estab. 2011

September 2019

Day	2 meter Wind Speed			Soil Moisture at 0900 hrs (rounded to the 0.5%)		
	Daily Average	Max ½ hr Avg	½ hr Extreme Max	10 cm	20 cm	50 cm
	km/h	km/h	km/h	% by volume (soil type is Clay Loam)		
1	5.0	9.3	14.5	21.5	31.0	44.5
2	7.0	10.7	20.0	25.5	32.0	45.0
3	7.0	15.0	22.0	32.5	36.0	45.0
4	9.0	17.9	25.8	34.5	36.0	43.5
5	8.0	17.1	26.0	30.0	36.0	44.0
6	6.0	12.3	19.3	28.5	35.5	45.0
7	6.0	12.7	19.5	28.5	35.5	44.5
8	12.0	16.9	23.7	27.5	35.0	44.5
9	16.0	20.4	30.4	27.0	35.0	45.0
10	13.0	16.8	26.0	26.5	34.5	45.0
11	11.0	12.9	20.6	34.0	34.5	45.0
12	3.0	6.5	10.4	35.5	34.5	45.0
13	5.0	10.4	18.5	34.5	34.5	45.0
14	4.0	10.0	15.8	32.5	33.5	43.5
15	3.0	8.7	16.2	31.5	34.0	44.0
16	4.0	11.7	20.2	30.5	34.0	43.0
17	8.0	16.5	22.7	29.5	34.0	45.0
18	9.0	15.2	22.4	27.5	34.5	42.5
19	8.0	15.2	23.3	27.0	33.0	45.0
20	8.0	12.7	22.0	37.5	39.5	45.0
21	9.0	14.0	21.4	35.0	38.5	45.0
22	7.0	10.4	16.2	33.0	38.0	43.5
23	11.0	21.0	32.3	32.0	37.5	41.5
24	11.0	17.6	29.1	31.5	37.0	45.0
25	9.0	14.0	37.5	31.0	37.0	43.0
26	4.0	8.6	13.5	29.0	37.0	44.0
27	9.0	16.6	24.7	30.0	36.5	44.5
28	7.0	10.8	15.1	29.5	36.5	44.5
29	13.0	19.7	29.5	29.5	36.0	44.0
30	11.0	16.9	27.2	29.5	35.5	44.0
31						
Total						
Mean				30	35	44.3
Extreme	16.0	21.0	37.5	37.5	39.5	45
Date	13	12	11.5	13	13	12.5



SRC proudly recognizes the following CRS supporters:



Agriculture and
Agri-Food Canada

Agriculture et
Agroalimentaire Canada

