



SRC CLIMATE REFERENCE STATION DAILY DATA REPORT

SASKATOON STATION 4057180

Saskatchewan 52°09' N 106°36' W 497 m asl Estab. 1963

Preliminary JUNE 2022

Day	Temperature						Degree-days			Precipitation			Relative Humidity		Station Pressure (sea level)	
	Max	Normal Max	Min	Normal Min	Mean	Normal Mean	Growing	Heating	Cooling	Weighing Gauge	Tipping Bucket	Notes	Max ½ hr Avg	Min ½ hr Avg	Max ½ hr Avg	Min ½ hr Avg
	°C	1991-2020	°C	1991-2020	°C	1991-2020	5°C base	18°C base	18°C base	mm	mm		%	%	mbar	mbar
1	19.1	21.9	4.0	8.7	11.6	15.3	6.6	6.4	0.0	0.0	0.0		59	20	1019	1015
2	21.5	23.1	7.8	9.1	14.7	16.1	9.7	3.3	0.0	0.0	0.0		50	14	1017	1015
3	23.4	22.5	5.7	9.3	14.6	15.9	9.6	3.4	0.0	0.0	0.0		62	17	1015	1011
4	24.5	22.3	5.4	9.0	15.0	15.7	10.0	3.0	0.0	0.0	0.0		68	14	1013	1011
5	20.3	22.0	9.6	9.5	15.0	15.8	10.0	3.0	0.0	0.0	0.0		66	25	1014	1012
6	21.4	20.8	8.0	9.7	14.7	15.3	9.7	3.3	0.0	0.0	0.0		65	21	1016	1014
7	23.8	21.2	9.4	8.5	16.6	14.9	11.6	1.4	0.0	0.0	0.0		67	21	1017	1015
8	25.9	20.4	10.7	8.8	18.3	14.7	13.3	0.0	0.3	0.0	0.0		59	17	1017	1012
9	23.6	21.1	13.3	9.2	18.5	15.2	13.5	0.0	0.5	1.8	1.8	showers	85	38	1012	1010
10	25.0	20.9	11.2	9.1	18.1	15.0	13.1	0.0	0.1	6.5	6.4	rain	92	35	1010	1002
11	23.1	21.2	10.3	8.8	16.7	15.0	11.7	1.3	0.0	0.0	0.0		78	28	1006	1004
12	23.7	22.2	9.2	9.4	16.5	15.8	11.5	1.5	0.0	0.0	0.0		87	38	1005	1002
13	23.2	23.4	9.8	10.1	16.5	16.8	11.5	1.5	0.0	0.2	0.0	showers	92	53	1003	997
14	17.2	22.4	8.6	10.9	12.9	16.7	7.9	5.1	0.0	0.0	0.0		90	54	1000	994
15	16.4	21.3	6.5	9.8	11.5	15.6	6.5	6.5	0.0	1.7	1.8	showers	91	52	1003	992
16	22.6	22.3	10.3	9.7	16.5	16.0	11.5	1.5	0.0	0.6	0.8	showers	93	48	1017	1003
17	27.7	21.4	11.6	10.1	19.7	15.8	14.7	0.0	1.7	0.0	0.0		86	35	1017	1005
18	33.4	22.1	18.9	10.3	26.2	16.3	21.2	0.0	8.2	0.0	0.0		73	35	1005	999
19	22.2	22.3	16.8	11.7	19.5	17.0	14.5	0.0	1.5	0.3	0.3	showers	90	64	1010	1005
20	20.4	21.7	15.0	10.7	17.7	16.3	12.7	0.3	0.0	34.6	33.0	rain	91	65	1013	1009
21	22.5	23.4	13.7	10.8	18.1	17.1	13.1	0.0	0.1	0.0	0.0		88	39	1017	1012
22	28.2	23.3	12.8	11.9	20.5	17.7	15.5	0.0	2.5	3.4	3.3	T-storm	85	31	1016	1007
23	25.2	23.0	13.0	11.4	19.1	17.2	14.1	0.0	1.1	5.7	6.4	T-storm	93	42	1009	1006
24	18.7	22.4	9.6	10.5	14.2	16.5	9.2	3.8	0.0	0.7	0.5	showers	93	56	1015	1008
25	22.3	23.0	9.1	11.1	15.7	17.1	10.7	2.3	0.0	3.5	3.6	T-storm	89	41	1022	1015
26	25.4	22.9	10.5	11.2	18.0	17.1	13.0	0.0	0.0	0.0	0.0		83	27	1023	1018
27	21.7	23.4	11.6	11.2	16.7	17.3	11.7	1.3	0.0	0.0	0.0		82	41	1022	1018
28	21.8	24.6	8.1	11.9	15.0	18.3	10.0	3.0	0.0	0.0	0.0		87	34	1023	1013
29	23.1	23.8	12.9	12.0	18.0	17.9	13.0	0.0	0.0	0.3	0.3	showers	83	55	1012	1003
30	22.6	23.7	10.1	12.0	16.4	17.9	11.4	1.6	0.0	0.0	0.0		90	33	1016	1012
Total							352.5	53.5	16.0	59.3	57.9		Extreme / Date	Extreme / Date	Extreme / Date	Extreme / Date
Avg	23.0	22.3	10.5	10.2	16.8	16.3	1991-2020 Normal			73.9	1991-2020 Normal					
Extreme Date	33.4		4.0				339.1	74.2	22.9	154.5	Year to date 2022 Cumulative		93	14	1023	992
	18		1							168.3	Year to date Cumulative Normal		16	2	26	15

Note: Red numbers indicate manual calculation; Red cell indicate data not available

SRC proudly recognizes the following CRS supporters:

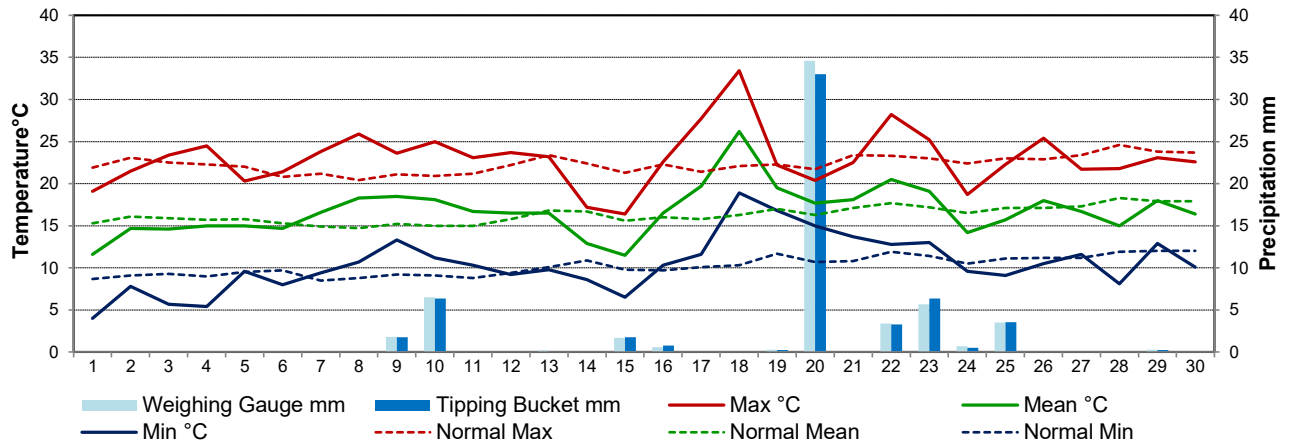


Agriculture and Agri-Food Canada

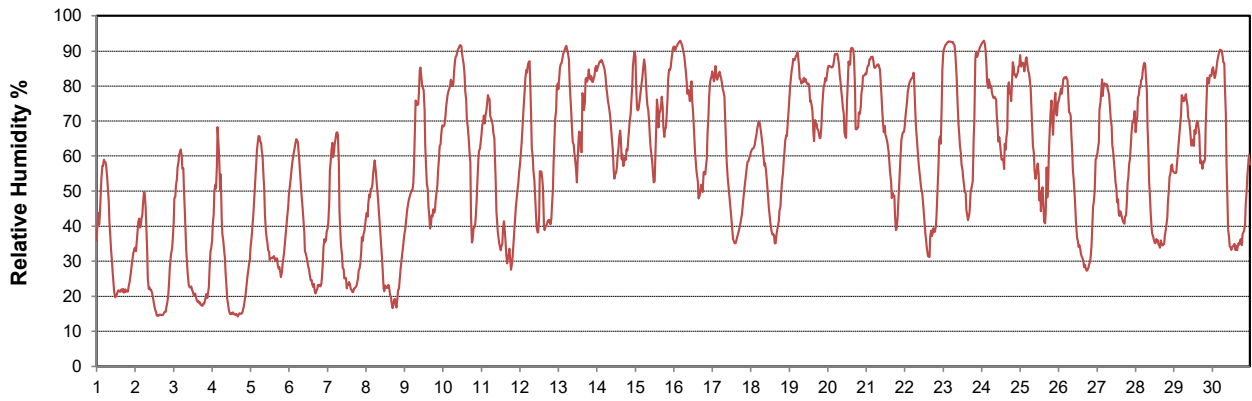
Agriculture et Agroalimentaire Canada



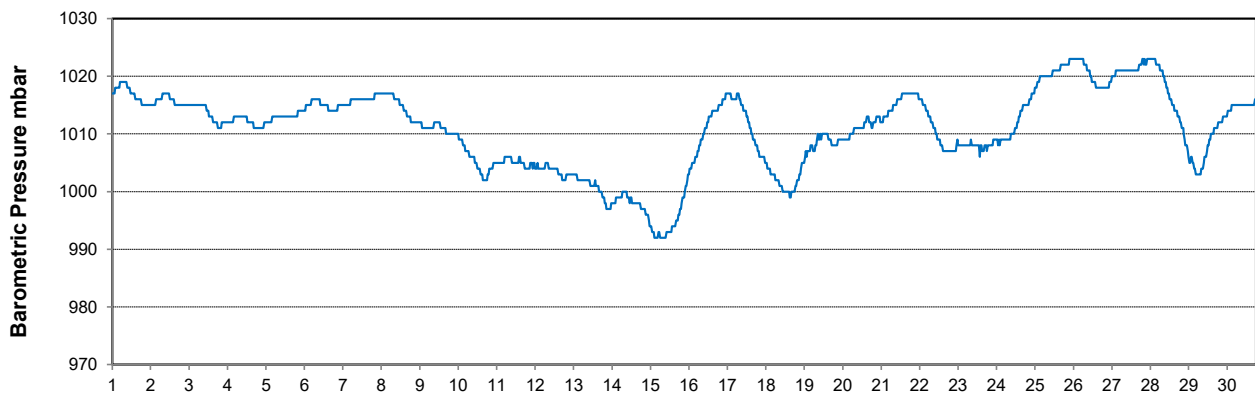
Temperature and Precipitation for June 2022



Relative Humidity for June 2022



Barometric Pressure Corrected to Sea Level for June 2022





SRC CLIMATE REFERENCE STATION DAILY DATA REPORT

SASKATOON STATION 4057180

Saskatchewan 52°09' N 106°36' W 497 m asl Estab. 1963

Preliminary **JUNE 2022**

Day	Wind Gust			Wind Speed (10 meters) Daily Average	Soil Temperatures at 0900hrs (rounded to the nearest 0.5C)								Radiation				
	Max	Direction	Time		Surface	5 cm	10 cm	20 cm	50 cm	100 cm	150 cm	300 cm	Bright Sunshine	Possible	% Possible	Global	Diffuse
	km/h				°C	°C	°C	°C	°C	°C	°C	°C	hours	hours		MJ/m ²	MJ/m ²
1	55.2	NNW	14:40	24.5	13.0	10.5	11.5	12.5	11.5	9.0	7.0	5.5	14.8	16.4	90.0	27.8	5.8
2	50.4	N	9:56	14.8	14.0	12.0	12.5	13.0	11.5	9.0	7.5	5.5	15.5	16.5	94.1	28.9	5.0
3	35.9	NW	12:31	10.9	16.0	12.0	13.0	13.5	11.5	9.0	7.5	5.5	14.9	16.5	90.3	25.7	7.4
4	32.5	E	19:09	21.9	17.0	12.5	13.5	14.0	12.0	9.0	7.5	5.5	15.3	16.5	92.6	28.1	5.9
5	46.4	E	15:50	19.4	14.5	14.5	15.0	15.0	12.5	9.5	7.5	5.5	13.9	16.6	83.9	25.5	8.0
6	40.2	ESE	0:44	10.3	14.5	14.0	14.5	15.0	12.5	9.5	7.5	5.5	15.7	16.6	94.7	28.2	6.5
7	37.5	N	12:15	9.8	18.5	15.5	16.0	16.0	13.0	9.5	8.0	6.0	8.7	16.6	52.4	19.3	12.3
8	27.0	SW	12:54	23.4	18.0	15.0	15.5	15.5	13.0	10.0	8.0	6.0	10.3	16.6	61.9	21.9	10.4
9	34.8	E	13:53	26.7	14.5	16.0	16.5	16.0	13.5	10.0	8.0	6.0	6.2	16.7	37.2	14.3	7.3
10	49.8	WNW	18:45	27.5	12.5	15.0	15.5	15.5	13.5	10.5	8.5	6.0	6.4	16.7	38.4	13.3	7.3
11	28.4	SSE	19:41	20.6	16.0	14.0	14.5	15.0	13.5	10.5	8.5	6.0	6.9	16.7	41.4	16.6	9.7
12	25.6	N	15:00	23.9	19.5	14.0	14.5	15.0	13.5	10.5	8.5	6.0	10.3	16.7	61.7	18.5	10.0
13	50.7	SE	21:01	27.7	20.0	15.5	15.5	15.5	13.5	10.5	8.5	6.0	4.2	16.7	25.1	11.3	8.0
14	33.2	SW	6:43	26.1	11.5	14.5	15.5	15.5	13.5	10.5	8.5	6.5	4.5	16.7	26.9	12.3	9.9
15	23.6	SSE	4:17	13.1	12.5	13.0	13.5	14.5	13.5	11.0	9.0	6.5	3.3	16.7	19.7	10.2	8.1
16	40.1	NNW	11:18	9.7	15.0	14.0	14.0	14.0	13.0	11.0	9.0	6.5	5.5	16.7	32.9	16.6	10.4
17	64.3	ESE	16:49	9.0	19.5	14.5	14.5	14.5	13.0	11.0	9.0	6.5	12.5	16.8	74.6	27.0	7.2
18	56.6	ESE	0:55	9.0	24.0	18.0	18.0	17.0	13.5	11.0	9.0	6.5	14.4	16.8	85.9	26.9	7.1
19	27.4	NNW	17:35	29.7	18.5	20.0	20.0	18.5	14.5	11.0	9.0	6.5	0.0	16.8	0.0	7.4	6.6
20	44.2	SE	13:59	24.0	18.0	18.0	18.5	18.0	15.0	11.5	9.0	6.5	1.8	16.8	10.7	7.5	5.7
21	38.5	N	12:00	15.2	16.0	16.5	17.0	16.5	14.5	11.5	9.5	7.0	8.7	16.8	51.9	20.4	9.0
22	37.8	NW	18:53	13.9	19.0	17.0	17.5	17.5	15.0	11.5	9.5	7.0	12.9	16.8	77.0	24.5	9.9
23	41.1	SSW	19:42	20.7	18.0	17.5	17.5	17.5	15.0	12.0	9.5	7.0	9.1	16.8	54.3	22.0	10.7
24	45.4	NNW	19:14	14.1	11.5	16.5	17.0	17.5	15.5	12.0	9.5	7.0	3.9	16.8	23.3	12.6	9.1
25	54.6	NNW	2:21	21.9	13.0	14.5	15.0	15.5	14.5	12.0	10.0	7.0	8.5	16.8	50.7	22.0	8.4
26	38.2	WSW	16:58	35.0	17.5	15.0	15.5	16.0	14.5	13.0	10.0	7.0	14.3	16.7	85.4	28.6	5.6
27	43.2	N	0:48	24.2	17.0	16.0	16.5	17.0	14.5	13.0	10.0	7.0	11.6	16.7	69.3	25.0	8.4
28	40.9	NNE	0:11	13.5	16.0	16.0	16.5	17.0	15.0	13.0	10.0	7.0	15.2	16.7	90.9	29.1	5.4
29	46.5	NNE	15:27	14.7	18.0	18.0	18.0	18.0	15.0	13.0	10.0	7.5	5.9	16.7	35.3	17.2	8.9
30	54.2	WNW	15:47	11.1	16.5	16.5	17.0	17.5	15.5	13.0	10.0	7.5	13.3	16.7	79.7	28.1	5.7
Total													288.5	500.3	57.7	616.8	239.7
Mean				18.9	16.3	15.2	15.7	15.8	13.7	10.9	8.8	6.4	1991-2020 Normal				
Extreme	64.3	ESE	16:49		1971- 2000 Normal for Soil Temperatures								253	500.2	50.6	612.6	218.3
Date	17				15.3	15.7	16.3	14.0	10.4	8.3	5.4	No. of Bright Sunshine days = 29					

Note: Red numbers indicate manual calculation; Red cell indicate data not available

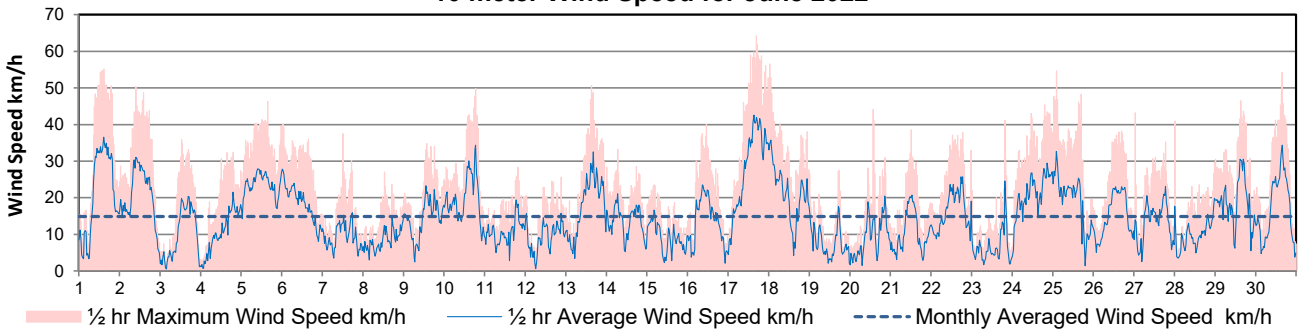
SRC proudly recognizes the following CRS supporters:



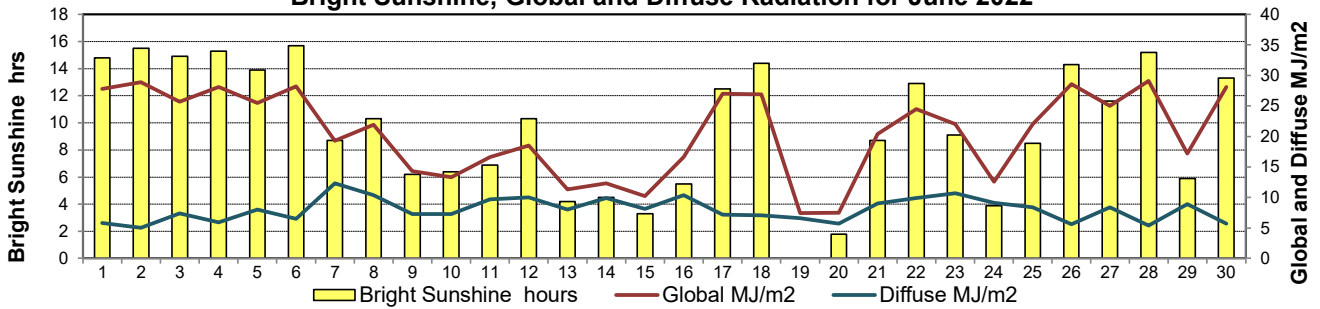
Agriculture and Agri-Food Canada / Agriculture et Agroalimentaire Canada



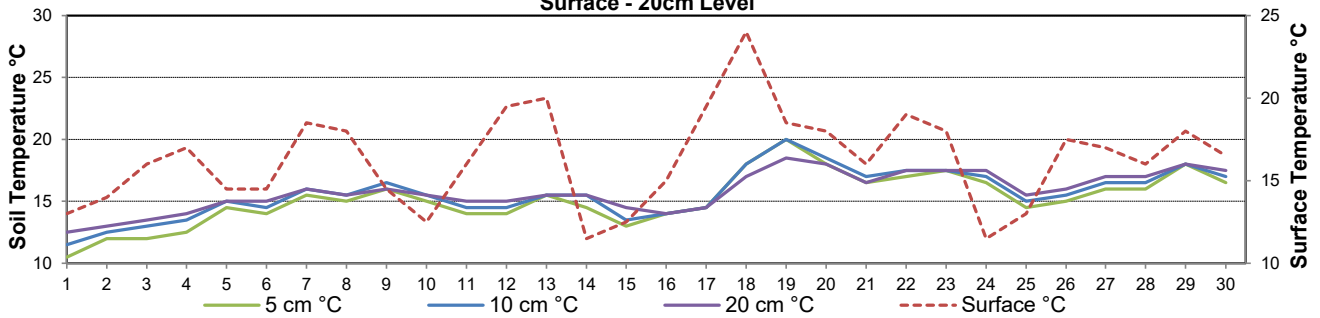
10 meter Wind Speed for June 2022



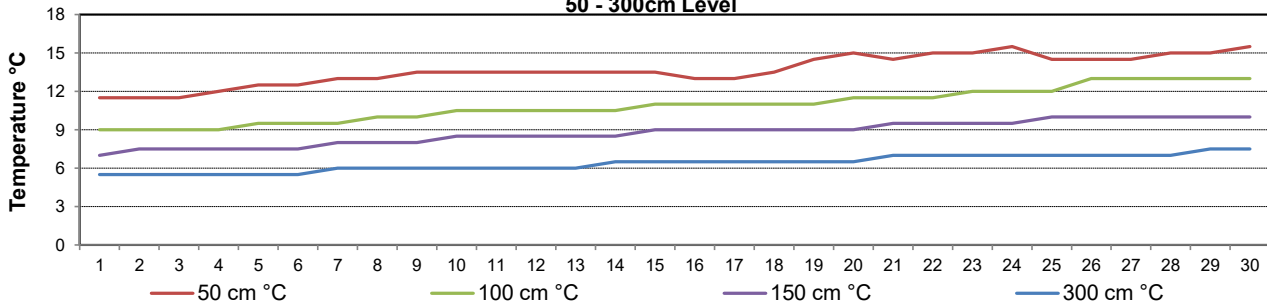
Bright Sunshine, Global and Diffuse Radiation for June 2022



**Soil Temperatures for June 2022
Surface - 20cm Level**



**Soil Temperatures for June 2022
50 - 300cm Level**





SRC CLIMATE REFERENCE STATION DAILY DATA REPORT

SASKATOON STATION 4057180

52°09' N 106°36' W 497 m asl Estab. 1963

Preliminary **JUNE 2022**

Extreme Records for June

Max/Min Temperature °C				Precipitation - Monthly mm				Wind Monthly km/h				CRS Bright Sunshine - Monthly			
S'toon Area	Date	Site	S'toon CRS Date	S'toon Area	Date	Site	S'toon CRS Date	S'toon Airport	Date	S'toon CRS**	Date	Hours	Year	No. of Days	Year
41.5	06/1988	S2	41.0 05/1988	186.8	1942	S	171.0 2005	117	01 ^S 1986	109.7 ^{SW}	22/2005	370.6	1978	30	1969*
-3.9	02/1917	US	-3.3 06/1967	5.0	2003	KCS	13.0 1985					175.3	2005	25	2002, 05

**1975 forward * more than one year

Notable Events for CRS Saskatoon - June						Saskatoon Area Stations			Glossary	
Element	Type	Day	New Record	Old Record	Year	SM	NWMP	c. 1892-1901	T	Trace of precipitation
Temperature	Highest Maximum Daily	18	33.4	31.5	1988	SE	Eby	1901-1941	Normal	30 year average beginning with the decade
	Highest Minimum Daily	19	16.8	16.5	1987	US	Univ. of Sask.	1915-1964	SOG	Depth of snow-on-the-ground in cm
	Highest Mean Daily	18	26.2	24.0	1988	S	Saskatoon	1941-1942	na	not available
	Growing Degree-days	Highest Daily GDD	18	21.2	19.0	1988	SA	Saskatoon A	1942 -	Degree-days
Extreme Colling Degree-days (24C)	Highest Daily	18	2.2	----	----	NRC	Nat. Res. Council	1952-1966	Tm	Mean Temperature
						SRC	Sask. Res. Council	1963-	Growing	(Tm-5°C); if Tm ≤ 5°C then GDD = 0
Precipitation	Highest Daily Maximum	20	34.6	20.9	2019	SWT	S'toon Water Treatment Plant	1974 -	Heating	(18°C-Tm); if Tm ≤ 18°C then HDD = 0
						SC	S'toon Central Ave	1974-1989	Cooling	(Tm-18°C); if Tm ≥ 18°C then CDD = 0
						S1	Saskatoon 1	1976-1978	Extreme Cooling	(Tm-24°C); if Tm ≥ 24°C then CDD = 0
						S2	Saskatoon 2	1977-1990	8 June 2022 Tour of site by SaskPolytech Students 13,14 June 2022 Rainstorms in the area but not in S'toon	
K	S'toon Kernen Farm	1993-2004								
						KCS	S'toon Kernen Farm CS	1996-	20 June 2022 Large rainstorm on east side of the city with flooding in some locations	
						RCS	Environment Canada	2008-		
						SF	Sutherland Forestry	1943-1970		

SRC proudly recognizes the following CRS supporters:





SRC CLIMATE REFERENCE STATION DAILY DATA REPORT
SASKATOON STATION 4057180

52°09' N 106°36' W 497 m asl Estab. 1963

Preliminary **June** **2022**

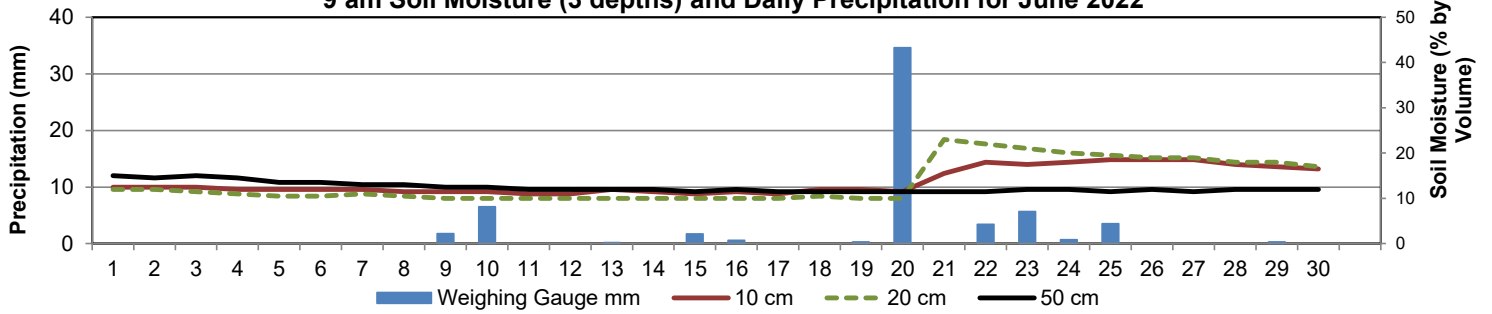
Day	2 meter Wind Speed			Soil Moisture at 0900 hrs (rounded to the 0.5%)														
	Daily Average	Max ½ hr Avg	½ hr Extreme Max	10 cm	20 cm	50 cm												
	km/h	km/h	km/h	% by volume (soil type is Loam (45.5% Sand, 41.1% Silt, 13.3% Clay))														
1	16.0	28.8	43.7	12.5	12.0	15.0												
2	16.0	24.3	39.1	12.5	12.0	14.5												
3	7.0	16.6	29.3	12.5	11.5	15.0												
4	9.0	16.0	31.0	12.0	11.0	14.5												
5	18.0	21.6	35.0	12.0	10.5	13.5												
6	14.0	20.7	33.3	12.0	10.5	13.5												
7	7.0	13.1	31.0	12.0	11.0	13.0												
8	7.0	10.4	23.5	11.5	10.5	13.0												
9	10.0	17.4	29.8	11.5	10.0	12.5												
10	14.0	25.6	37.3	11.5	10.0	12.5												
11	8.0	14.5	22.4	11.0	10.0	12.0												
12	7.0	11.5	24.7	11.0	10.0	12.0												
13	12.0	23.6	38.5	12.0	10.0	12.0												
14	10.0	16.1	28.1	11.5	10.0	12.0												
15	6.0	9.5	17.7	11.0	10.0	11.5												
16	10.0	17.6	30.4	11.5	10.0	12.0												
17	20.0	31.3	49.4	11.0	10.0	11.5												
18	16.0	25.3	38.5	12.0	10.5	11.5												
19	5.0	13.3	20.6	12.0	10.0	11.5												
20	6.0	15.0	32.7	11.5	10.0	11.5												
21	7.0	15.1	28.7	15.5	23.0	11.5												
22	11.0	18.5	30.4	18.0	22.0	11.5												
23	4.0	15.8	31.6	17.5	21.0	12.0												
24	15.0	20.8	37.3	18.0	20.0	12.0												
25	14.0	23.3	43.1	18.5	19.5	11.5												
26	11.0	17.6	31.6	18.5	19.0	12.0												
27	9.0	15.7	29.8	18.5	19.0	11.5												
28	7.0	13.6	31.0	17.5	18.0	12.0												
29	13.0	20.9	33.9	17.0	18.0	12.0												
30	12.0	24.7	40.2	16.5	17.0	12.0												
Total																		
Mean				14	14	12												
Extreme	20.0	31.3	49.4	18.5	23.0	15.0												
Date	17	17	17															

Note: Red numbers indicate manual calculation; Red cell indicate data not available

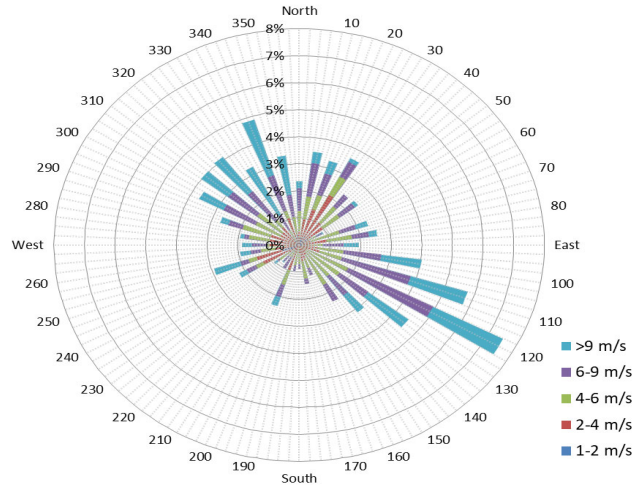
SRC proudly recognizes the following CRS supporters:



9 am Soil Moisture (3 depths) and Daily Precipitation for June 2022



1/2 hr Maximum Wind Speed and Direction Saskatoon June 2022



10 minute Average Wind Speed and Direction Saskatoon June 2022

