



SRC CLIMATE REFERENCE STATION DAILY DATA REPORT

CONSERVATION LEARNING CENTRE

Saskatchewan 53.03°N 105.77°W 451m asl Estab. 2011

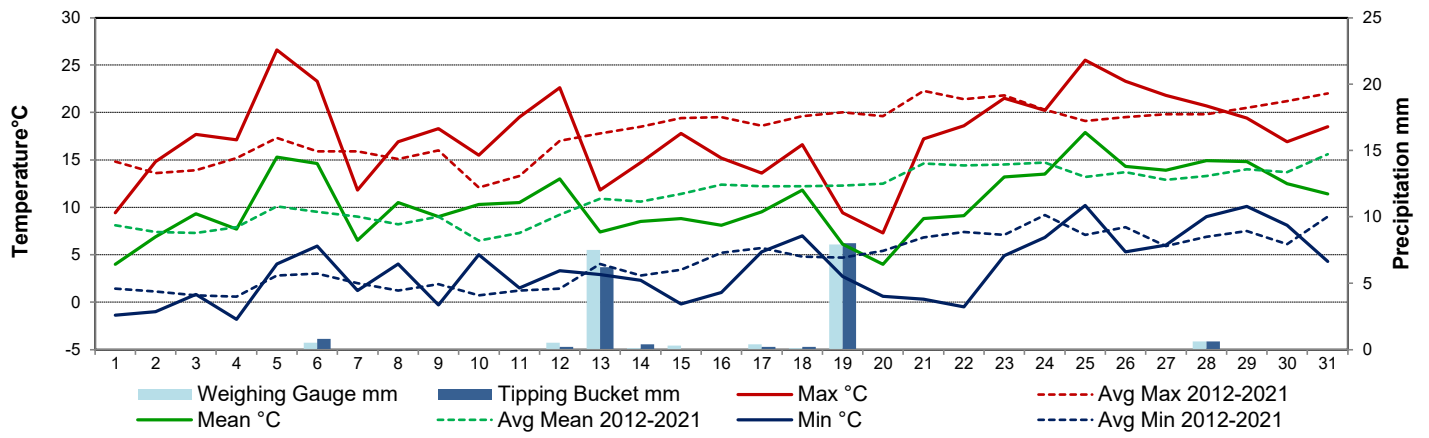
Preliminary **May 2022**

Day	Temperature						Degree-days			Precipitation			Relative Humidity		Station Pressure <i>corrected to sea level</i>	
	Max	Avg Max	Min	Avg Min	Mean	Avg Mean	Growing	Heating	Cooling	Weighing Gauge	Tipping Bucket	Notes	Max ½ hr Avg	Min ½ hr Avg	Max ½ hr Avg	Min ½ hr Avg
	°C	2012-2021	°C	2012-2021	°C	2012-2021	5°C base	18°C base	18°C base	mm	mm		%	%	mbar	mbar
1	9.4	14.8	-1.4	1.4	4.0	8.1	0.0	14.0	0.0	0.0	0.0		97	51	1022	1020
2	14.8	13.6	-1.0	1.1	6.9	7.4	1.9	11.1	0.0	0.0	0.0		94	45	1020	1011
3	17.7	13.9	0.8	0.7	9.3	7.3	4.3	8.7	0.0	0.0	0.0		93	38	1014	1011
4	17.1	15.2	-1.8	0.6	7.7	7.9	2.7	10.3	0.0	0.0	0.0		100	41	1015	1007
5	26.6	17.3	4.0	2.8	15.3	10.1	10.3	2.7	0.0	0.0	0.0		91	22	1007	999
6	23.3	15.9	5.9	3.0	14.6	9.5	9.6	3.4	0.0	0.5	0.8		91	25	998	991
7	11.8	15.9	1.2	2.0	6.5	9.0	1.5	11.5	0.0	0.0	0.0		100	55	995	991
8	16.9	15.1	4.0	1.2	10.5	8.2	5.5	7.5	0.0	0.0	0.0		79	28	997	991
9	18.3	16.0	-0.3	1.9	9.0	9.0	4.0	9.0	0.0	0.0	0.0		92	27	1000	997
10	15.5	12.1	5.0	0.7	10.3	6.5	5.3	7.7	0.0	0.0	0.0		82	33	1012	1000
11	19.5	13.3	1.5	1.2	10.5	7.3	5.5	7.5	0.0	0.0	0.0		88	26	1019	1012
12	22.6	17.0	3.3	1.4	13.0	9.2	8.0	5.0	0.0	0.5	0.2		81	23	1018	1013
13	11.8	17.8	2.9	4.0	7.4	10.9	2.4	10.6	0.0	7.5	6.2		95	56	1013	1004
14	14.7	18.5	2.3	2.8	8.5	10.6	3.5	9.5	0.0	0.1	0.4		96	31	1009	1004
15	17.8	19.4	-0.2	3.4	8.8	11.4	3.8	9.2	0.0	0.3	0.0		97	30	1014	1009
16	15.2	19.5	1.0	5.2	8.1	12.4	3.1	9.9	0.0	0.0	0.0		97	45	1016	1012
17	13.6	18.6	5.3	5.7	9.5	12.2	4.5	8.5	0.0	0.4	0.2		94	61	1013	1011
18	16.6	19.6	7.0	4.8	11.8	12.2	6.8	6.2	0.0	0.1	0.2		98	39	1011	1001
19	9.4	20.0	2.7	4.7	6.1	12.3	1.1	11.9	0.0	7.9	8.0		97	53	1007	994
20	7.3	19.6	0.6	5.4	4.0	12.5	0.0	14.0	0.0	0.0	0.0		76	47	1018	1007
21	17.2	22.3	0.3	6.8	8.8	14.6	3.8	9.2	0.0	0.0	0.0		70	24	1021	1018
22	18.6	21.4	-0.5	7.4	9.1	14.4	4.1	8.9	0.0	0.0	0.0		90	21	1020	1014
23	21.5	21.8	4.9	7.1	13.2	14.5	8.2	4.8	0.0	0.0	0.0		84	30	1014	1010
24	20.2	20.3	6.8	9.2	13.5	14.7	8.5	4.5	0.0	0.0	0.0		86	35	1015	1010
25	25.5	19.1	10.2	7.1	17.9	13.2	12.9	0.1	0.0	0.0	0.0		77	24	1010	1005
26	23.3	19.5	5.3	7.9	14.3	13.7	9.3	3.7	0.0	0.0	0.0		98	32	1009	1005
27	21.8	19.8	6.0	5.9	13.9	12.9	8.9	4.1	0.0	0.0	0.0		100	37	1010	1004
28	20.7	19.8	9.0	6.9	14.9	13.3	9.9	3.1	0.0	0.6	0.6		97	57	1003	998
29	19.4	20.5	10.1	7.5	14.8	14.0	9.8	3.2	0.0	0.0	0.0		100	58	1005	999
30	16.9	21.2	8.1	6.1	12.5	13.7	7.5	5.5	0.0	0.0	0.0		98	60	1015	1005
31	18.5	22.0	4.3	9.0	11.4	15.6	6.4	6.6	0.0	0.0	0.0		88	23	1016	1014
Total							173.1	231.9	0.0	17.9	16.6					
Avg	17.5	18.1	3.5	4.4	10.5	11.3	Monthly 2012 - 2021 Average			38.3	2012-2021 Average					
Extreme	26.6	32.4	-1.8	-8.8			199.3	211.2	3.5	68.1	2022 Cumulative ppt		100	21	1022	991
Date	5	2016	4	2019						99.7	Cumulative Average		4	22	1	6

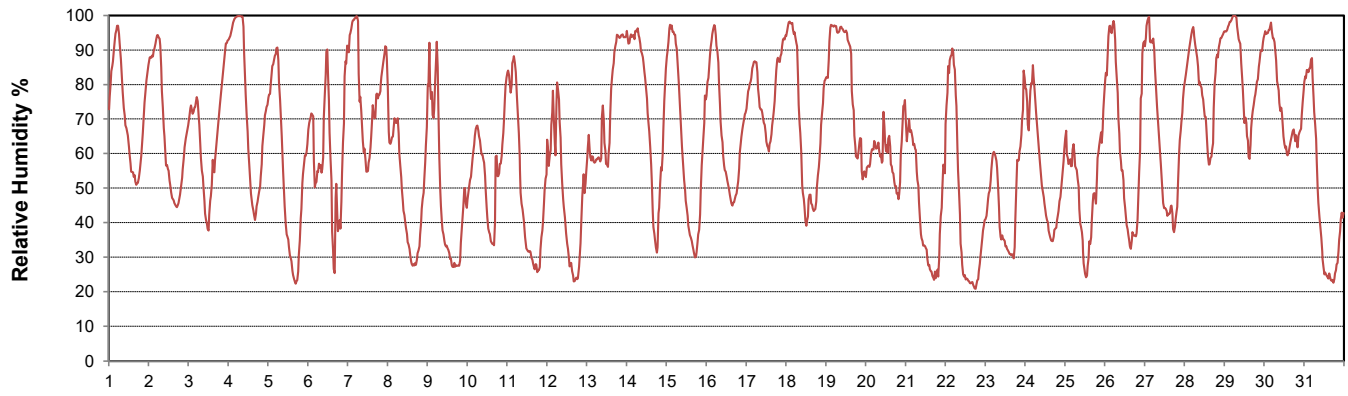
SRC proudly recognizes the following CRS supporters:



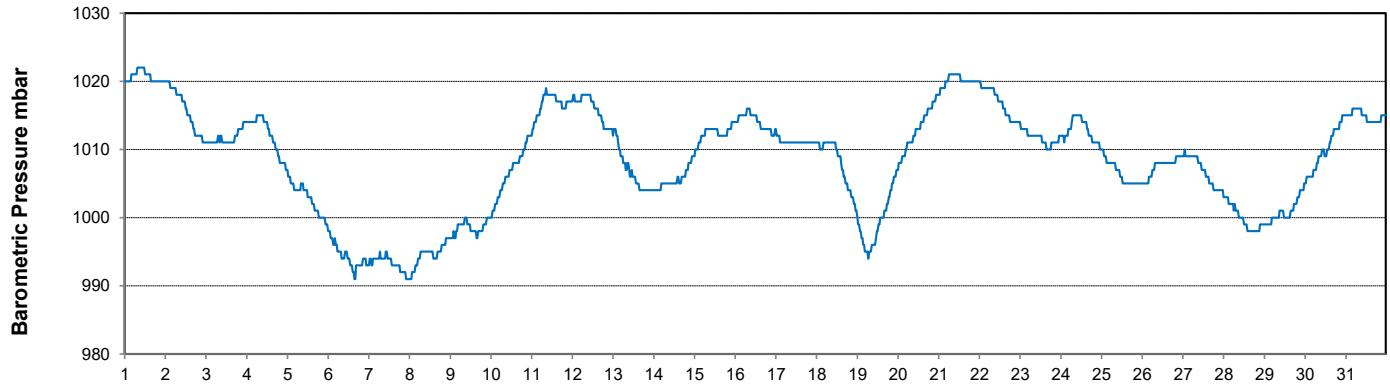
Temperature and Precipitation for May 2022



Relative Humidity for May 2022



Barometric Pressure Corrected to Sea Level for May 2022





SRC CLIMATE REFERENCE STATION DAILY DATA REPORT

CONSERVATION LEARNING CENTRE

Saskatchewan 53.03°N 105.77°W 451m asl Estab. 2011

Preliminary

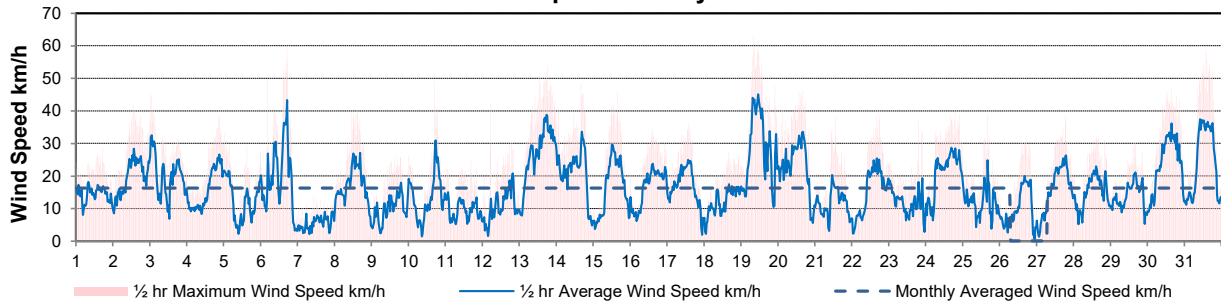
May 2022

Day	Wind Gust			Wind Speed (10 meters)	Soil Temperatures at 0900hrs								Radiation				
	Max	Direction	Time		Daily Average	Surface	5 cm	10 cm	20 cm	50 cm	100 cm	150 cm	300 cm	Bright Sunshine	Possible	% Possible	Global
	km/h			km/h		°C	°C	°C	°C	°C	°C	°C	°C	hours	hours		MJ/m ²
1	28.4	ENE	16:58	14.2	3.5	3.0	3.0	2.5	1.0	0.5	1.0	3.0	12.9	15.0	85.8	21.9	9.5
2	42.6	ESE	13:17	20.3	5.5	2.5	2.5	2.5	-1.0	1.0	1.0	3.0	12.7	15.1	84.1	23.7	6.5
3	45.4	S	0:25	19.8	12.0	4.0	3.5	3.0	-0.5	1.0	1.5	3.0	8.1	15.2	53.4	16.2	9.6
4	39.2	E	20:49	16.1	1.0	3.5	3.5	3.5	2.0	1.0	1.5	3.0	8.3	15.2	54.5	21.0	7.8
5	32.9	E	0:22	12.1	12.5	5.5	5.0	4.5	0.0	1.5	1.5	3.0	10.7	15.3	70.0	20.9	8.5
6	59.7	WSW	16:35	19.2	17.0	8.0	7.5	6.0	3.0	1.5	1.5	3.0	4.5	15.3	29.3	14.6	7.8
7	13.7	SSW	10:16	5.7	8.5	6.0	6.0	6.0	2.5	2.0	1.5	3.0	1.7	15.4	11.0	6.2	5.3
8	40.3	WSW	14:47	17.0	10.0	5.5	5.5	5.5	3.0	2.0	1.5	3.0	12.8	15.5	82.8	24.4	5.3
9	26.3	NW	23:40	10.3	10.5	5.0	5.0	5.5	4.0	2.5	1.5	3.0	14.2	15.5	91.5	26.1	5.2
10	49.0	SW	16:54	13.3	7.0	6.5	6.5	6.0	4.5	2.5	2.0	3.0	1.9	15.6	12.2	10.7	8.8
11	25.0	SW	16:14	9.2	10.0	5.5	5.5	6.0	4.0	2.5	2.0	3.0	13.8	15.6	88.3	26.2	4.1
12	42.1	W	4:59	10.5	14.0	7.0	6.5	6.5	5.0	3.0	2.0	3.0	12.3	15.7	78.4	23.2	6.0
13	53.8	NNE	17:48	27.2	10.0	8.0	8.0	7.5	5.0	3.0	2.0	3.0	0.0	15.7	0.0	3.0	2.7
14	48.1	N	15:43	20.6	4.0	5.5	5.5	6.0	5.0	3.0	2.0	3.0	4.3	15.8	27.2	13.5	8.6
15	45.7	NW	15:28	16.5	9.5	5.0	5.0	5.5	3.0	3.5	2.5	3.0	15.2	15.9	95.9	28.6	4.1
16	34.4	ENE	14:15	16.6	8.0	6.0	6.0	6.5	4.5	3.5	2.5	3.0	13.6	15.9	85.5	26.3	5.4
17	36.3	E	13:33	16.5	10.0	7.5	7.5	7.0	4.0	3.5	2.5	3.0	2.6	16.0	16.3	10.8	8.4
18	27.7	ESE	15:53	12.1	10.5	7.5	7.5	7.0	5.5	4.0	3.0	3.0	9.7	16.0	60.6	23.3	6.5
19	63.2	ENE	7:58	28.4	2.5	8.0	8.5	8.0	6.0	4.0	3.0	3.0	0.2	16.1	1.2	5.3	4.8
20	46.4	NNE	15:40	22.8	4.0	5.5	6.0	6.5	6.0	4.0	3.0	3.0	1.4	16.1	8.7	13.3	11.1
21	38.4	N	13:10	11.7	9.5	5.0	5.0	5.5	5.5	4.5	3.0	3.0	12.1	16.2	74.9	25.2	7.6
22	38.6	WSW	17:36	15.4	13.0	6.0	6.0	6.5	5.5	4.5	3.0	3.0	9.8	16.2	60.5	19.7	10.3
23	37.2	W	18:33	11.8	13.5	6.5	7.0	7.0	6.0	4.5	3.5	3.0	10.6	16.2	65.3	24.4	7.2
24	39.5	NE	18:32	21.1	9.0	8.5	8.5	8.0	6.0	4.5	3.5	3.0	11.5	16.3	70.6	26.4	6.8
25	38.8	SE	15:46	11.6	18.5	9.5	9.5	8.5	6.5	4.5	3.5	3.0	7.4	16.3	45.3	19.4	9.2
26	32.1	N	17:07	9.7	16.0	9.5	9.5	9.0	7.0	5.0	3.5	3.0	13.5	16.4	82.5	25.0	8.3
27	38.4	E	18:41	16.2	16.0	9.5	10.0	9.5	7.5	5.0	3.5	3.5	11.2	16.4	68.3	22.2	9.0
28	31.9	ENE	14:54	15.1	15.5	10.5	10.5	10.0	7.5	5.0	4.0	3.5	3.6	16.5	21.9	15.0	9.1
29	30.3	NNE	15:06	14.0	12.0	11.0	11.0	10.0	8.0	5.5	4.0	3.0	2.7	16.5	16.4	12.6	9.8
30	46.9	N	15:06	23.8	13.5	10.5	10.5	10.0	8.0	5.5	4.0	3.5	5.9	16.5	35.7	16.5	12.2
31	58.6	NNW	13:56	24.1	11.5	9.5	10.0	9.5	8.5	6.0	4.0	3.5	16.2	16.6	97.8	30.7	4.2
Total													265.4	491.8	54.0	596.3	229.7
Mean					10.3	6.8	6.8	6.6	4.6	3.4	2.5	3.1					
Extreme	63.2	ENE	7:58														
Date	19																

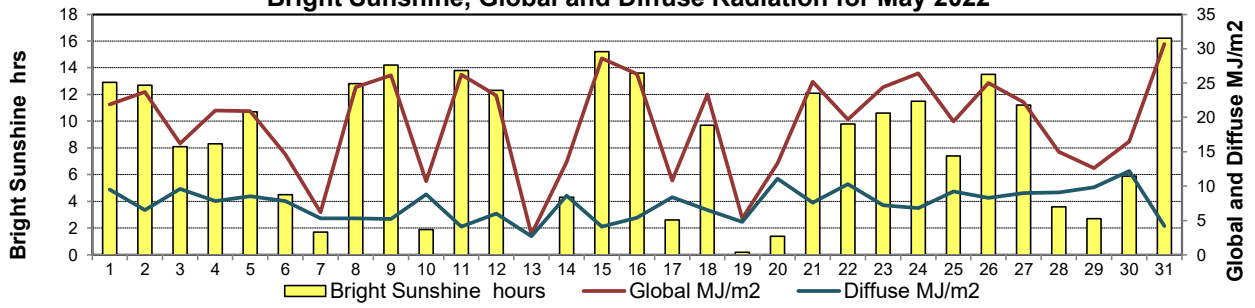
GLOSSARY OF TERMS

Degree-days	Radiation
Tm Mean Temperature	Bright Sunshine is the unobstructed direct radiation from the sun, as opposed to the shading of a location by clouds or by other atmospheric obstructions.
Growing (Tm-5°C); if Tm ≤ 5°C then GDD = 0	
Heating (18°C-Tm); if Tm ≥ 18°C then HDD = 0	
Cooling (Tm-18°C); if Tm ≤ 18°C then CDD = 0	Diffuse is radiation reaching the earth's surface after having been scattered from the direct solar beam
T Trace of Precipitation	Global is the sum of the direct solar and diffuse radiation
SOG Depth of snow-on-the-ground	
Red Cell no data available	Relative Humidity The ratio of the air's water vapour content of its water vapour capacity which changes with temperature.
Red Number manual calculation	Air Pressure The force exerted by the weight of a column of air above a given point
	Wind Gust The daily highest instantaneous value recorded irrespective of direction and/or duration

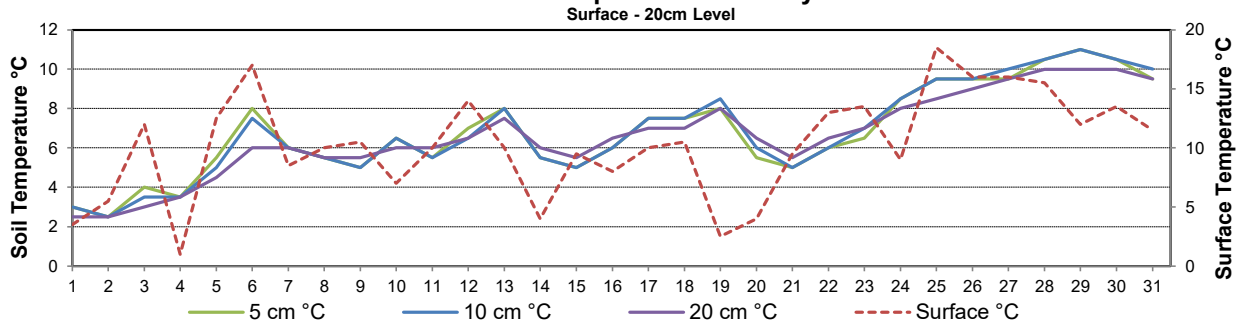
Wind Speed for May 2022



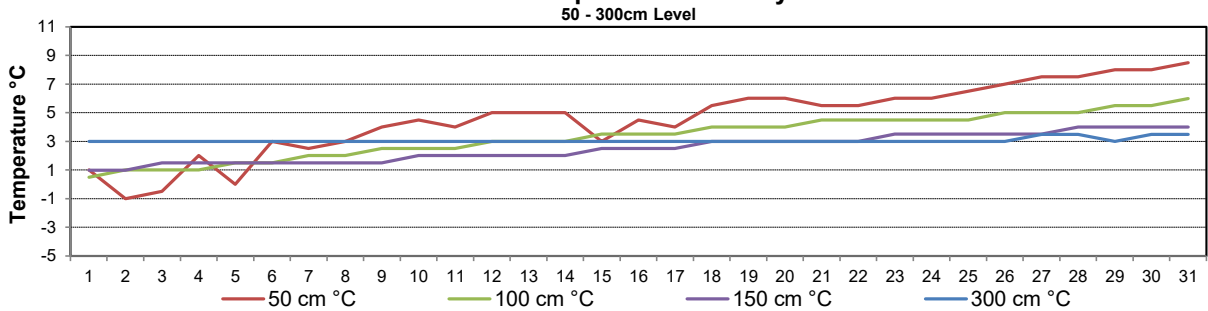
Bright Sunshine, Global and Diffuse Radiation for May 2022



9 am Soil Temperatures for May 2022



9 am Soil Temperatures for May 2022





SRC CLIMATE REFERENCE STATION DAILY DATA REPORT

CONSERVATION LEARNING CENTRE

Saskatchewan 53.03°N 105.77°W 451m asl Estab. 2011

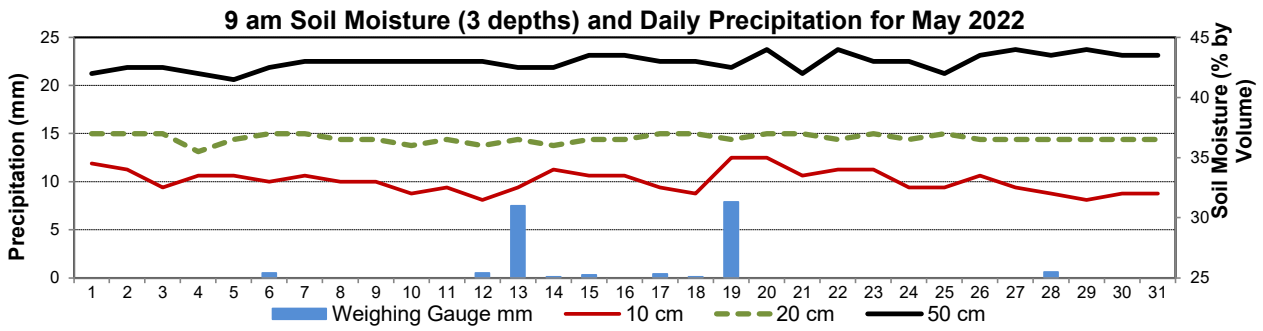
Preliminary

May 2022

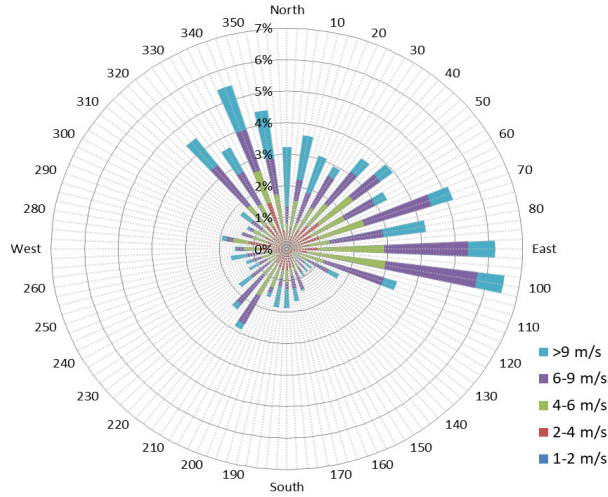
Day	2 meter Wind Speed			Soil Moisture at 0900 hrs (rounded to the 0.5%)														
	Daily Average	Max ½ hr Avg	½ hr Extreme Max	10 cm	20 cm	50 cm												
	km/h	km/h	km/h	% by volume (soil type is Clay Loam)														
1	11.0	13.6	23.5	34.5	37.0	42.0												
2	13.0	18.7	32.1	34.0	37.0	42.5												
3	15.0	24.0	35.4	32.5	37.0	42.5												
4	12.0	19.9	28.7	33.5	35.5	42.0												
5	9.0	17.1	25.4	33.5	36.5	41.5												
6	14.0	32.6	46.7	33.0	37.0	42.5												
7	4.0	7.5	12.0	33.5	37.0	43.0												
8	13.0	21.5	32.7	33.0	36.5	43.0												
9	8.0	14.0	21.0	33.0	36.5	43.0												
10	11.0	24.9	38.1	32.0	36.0	43.0												
11	7.0	12.3	22.2	32.5	36.5	43.0												
12	8.0	15.4	33.5	31.5	36.0	43.0												
13	19.0	29.6	42.7	32.5	36.5	42.5												
14	16.0	25.5	34.4	34.0	36.0	42.5												
15	12.0	22.9	33.3	33.5	36.5	43.5												
16	13.0	19.5	29.3	33.5	36.5	43.5												
17	13.0	19.0	29.5	32.5	37.0	43.0												
18	9.0	13.0	22.7	32.0	37.0	43.0												
19	21.0	35.3	51.0	35.0	36.5	42.5												
20	17.0	25.5	35.8	35.0	37.0	44.0												
21	9.0	16.6	31.6	33.5	37.0	42.0												
22	12.0	19.6	31.0	34.0	36.5	44.0												
23	9.0	14.8	28.3	34.0	37.0	43.0												
24	16.0	22.4	32.5	32.5	36.5	43.0												
25	9.0	15.3	25.6	32.5	37.0	42.0												
26	8.0	16.1	25.6	33.5	36.5	43.5												
27	12.0	19.2	32.5	32.5	36.5	44.0												
28	11.0	18.3	26.6	32.0	36.5	43.5												
29	11.0	16.8	25.0	31.5	36.5	44.0												
30	18.0	27.6	36.2	32.0	36.5	43.5												
31	18.0	11.0	44.0	32.0	36.5	43.5												
Total																		
Mean				33	37	43.0												
Extreme	21.0	35.3	51.0	35	37	44												
Date	0	0	0	0	0	0												

SRC proudly recognizes the following CRS supporters:





1/2 hr Maximum Wind Speed and Direction CLC May 2022



10 minute Average Wind Speed and Direction CLC May 2022

