



SRC CLIMATE REFERENCE STATION DAILY DATA REPORT

CONSERVATION LEARNING CENTRE

Saskatchewan 53.03°N 105.77°W 451m asl Estab. 2011

Preliminary **April 2022**

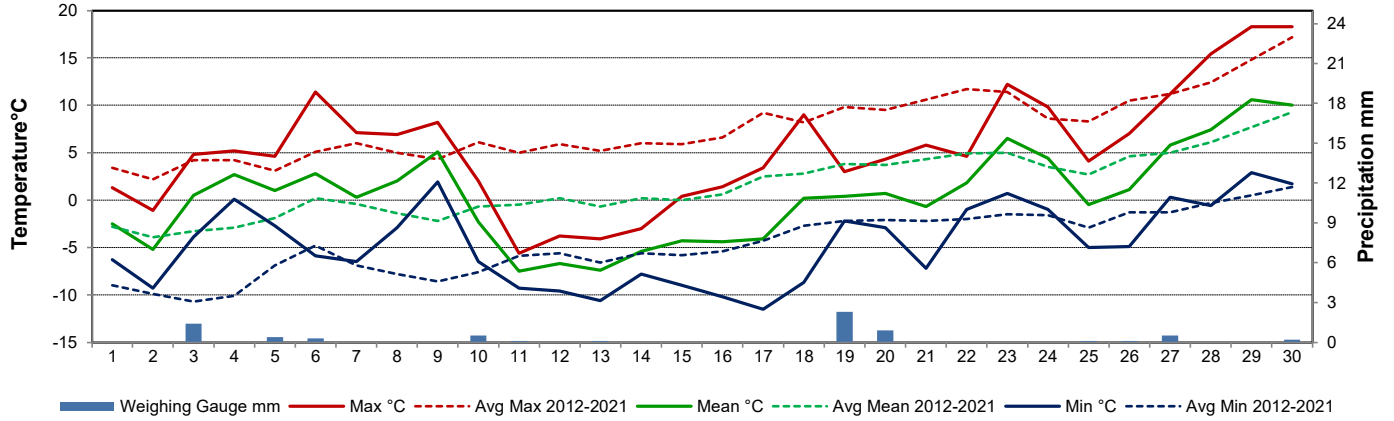
Day	Temperature						Degree-days			Precipitation			Relative Humidity		Station Pressure <i>corrected to sea level</i>	
	Max	Avg Max	Min	Avg Min	Mean	Avg Mean	Growing	Heating	Cooling	Weighing Gauge	Notes	Snow-on-Ground 0900h	Max ½ hr Avg	Min ½ hr Avg	Max ½ hr Avg	Min ½ hr Avg
	°C	2012-2021	°C	2012-2021	°C	2012-2021	5°C base	18°C base	18°C base	mm		cm	%	%	mbar	mbar
1	1.3	3.4	-6.3	-9.0	-2.5	-2.8	0.0	20.5	0.0	0.0		45	96	77	1013	998
2	-1.1	2.2	-9.3	-9.9	-5.2	-3.9	0.0	23.2	0.0	0.0		45	93	73	1015	1012
3	4.8	4.2	-3.9	-10.7	0.5	-3.3	0.0	17.5	0.0	1.4		46	98	78	1013	1006
4	5.2	4.2	0.1	-10.1	2.7	-2.9	0.0	15.3	0.0	0.0		43	91	71	1005	989
5	4.6	3.1	-2.7	-6.9	1.0	-1.9	0.0	17.0	0.0	0.4		39	96	81	1010	988
6	11.4	5.1	-5.9	-4.8	2.8	0.2	0.0	15.2	0.0	0.3		38	97	50	1025	1011
7	7.1	6.0	-6.5	-6.9	0.3	-0.4	0.0	17.7	0.0	0.0		36	93	65	1030	1025
8	6.9	5.0	-2.9	-7.8	2.0	-1.4	0.0	16.0	0.0	0.0		34	81	67	1025	994
9	8.2	4.3	1.9	-8.6	5.1	-2.2	0.1	12.9	0.0	0.0		30	84	61	998	992
10	2.0	6.1	-6.5	-7.6	-2.3	-0.7	0.0	20.3	0.0	0.5		25	87	62	1002	997
11	-5.6	5.0	-9.3	-5.9	-7.5	-0.5	0.0	25.5	0.0	0.1		25	86	63	1012	1003
12	-3.8	5.9	-9.6	-5.6	-6.7	0.2	0.0	24.7	0.0	0.0		25	80	58	1022	1013
13	-4.1	5.2	-10.6	-6.6	-7.4	-0.7	0.0	25.4	0.0	0.1		24	77	65	1023	1018
14	-3.0	6.0	-7.8	-5.6	-5.4	0.2	0.0	23.4	0.0	0.0		24	81	51	1017	1014
15	0.4	5.9	-9.0	-5.8	-4.3	0.0	0.0	22.3	0.0	0.0		24	73	31	1021	1016
16	1.4	6.6	-10.2	-5.4	-4.4	0.6	0.0	22.4	0.0	0.0		24	92	38	1022	1019
17	3.4	9.2	-11.5	-4.3	-4.1	2.5	0.0	22.1	0.0	0.0		24	93	34	1023	1019
18	9.0	8.2	-8.7	-2.7	0.2	2.8	0.0	17.8	0.0	0.0		24	87	32	1023	1015
19	3.0	9.8	-2.2	-2.2	0.4	3.8	0.0	17.6	0.0	2.3		23	97	58	1015	1003
20	4.3	9.5	-2.9	-2.1	0.7	3.7	0.0	17.3	0.0	0.9		22	96	59	1014	1001
21	5.8	10.6	-7.2	-2.2	-0.7	4.3	0.0	18.7	0.0	0.0		21	96	53	1018	1014
22	4.6	11.7	-1.0	-2.0	1.8	4.9	0.0	16.2	0.0	0.0		18	93	75	1018	1015
23	12.2	11.4	0.7	-1.5	6.5	5.0	1.5	11.5	0.0	0.0		16	92	37	1019	1016
24	9.8	8.6	-1.0	-1.6	4.4	3.5	0.0	13.6	0.0	0.0		1	81	37	1026	1018
25	4.1	8.3	-5.0	-2.9	-0.5	2.7	0.0	18.5	0.0	0.1		-	80	49	1028	1023
26	7.0	10.5	-4.9	-1.3	1.1	4.6	0.0	16.9	0.0	0.1		-	83	53	1022	1016
27	11.2	11.2	0.3	-1.3	5.8	5.0	0.8	12.2	0.0	0.5		-	86	58	1016	1010
28	15.4	12.4	-0.6	-0.3	7.4	6.1	2.4	10.6	0.0	0.0		-	95	48	1011	1008
29	18.3	14.8	2.9	0.5	10.6	7.7	5.6	7.4	0.0	0.0		-	90	24	1018	1010
30	18.3	17.2	1.7	1.4	10.0	9.3	5.0	8.0	0.0	0.2		-	87	24	1020	1017
Total							15.4	527.7	0.0	6.9						
Avg	5.4	7.7	-4.6	-4.7	0.4	1.5	Monthly 2012 - 2021 Average		19.6	2012-2021 Average						
Extreme	18.3	26.0	-11.5	-30.0			29.8	495.4	0	50.2	2022 Cumulative ppt		98	24	1030	988
Date	29	2015	17	2020						61.4	Cumulative Average		3	29	7	5

Spring maintenance 23 Apr 2022: Tipping bucket re-calibrated; Geonor bucket re-charged for summer, desiccant replaced in radiation instruments.

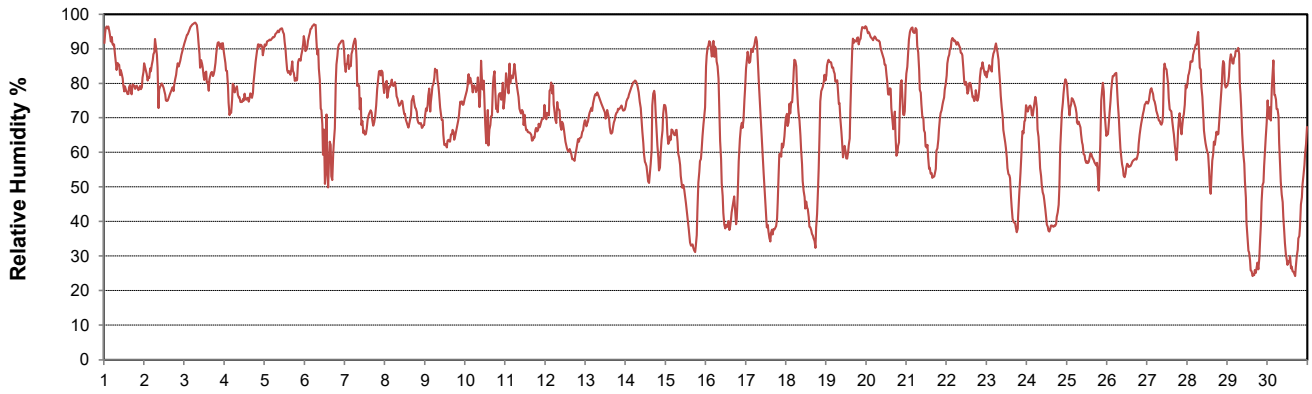
SRC proudly recognizes the following CRS supporters:



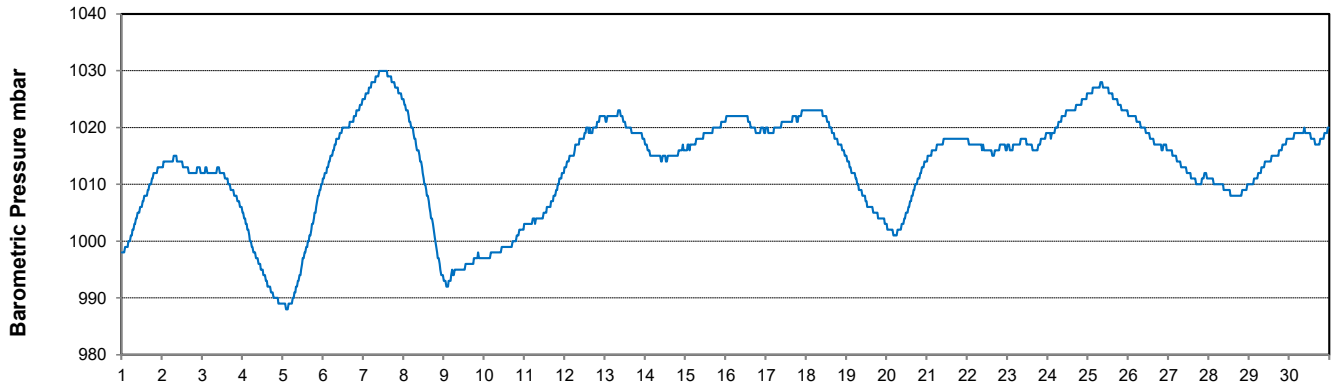
Temperature and Precipitation for April 2022



Relative Humidity for April 2022



Barometric Pressure Corrected to Sea Level for April 2022





SRC CLIMATE REFERENCE STATION DAILY DATA REPORT

CONSERVATION LEARNING CENTRE

Saskatchewan 53.03°N 105.77°W 451m asl Estab. 2011

Preliminary

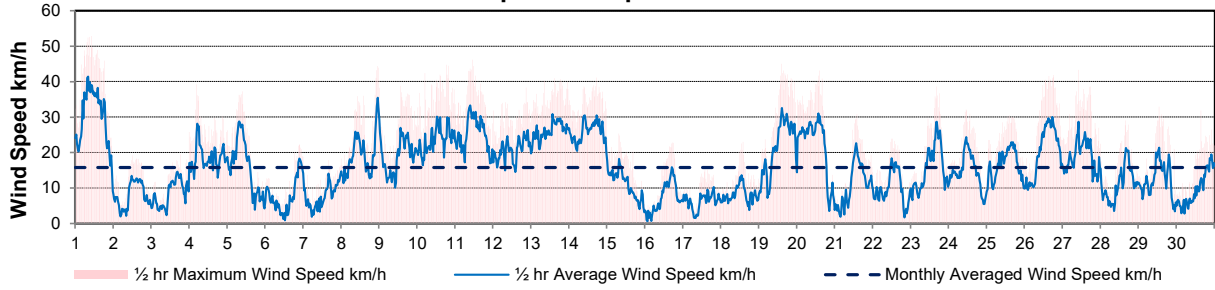
April 2022

Day	Wind Gust			Wind Speed (10 meters)	Soil Temperatures at 0900hrs								Radiation					
	Max	Direction	Time		Daily Average	Surface	5 cm	10 cm	20 cm	50 cm	100 cm	150 cm	300 cm	Bright Sunshine	Possible	% Possible	Global	Diffuse
	km/h			km/h		°C	°C	°C	°C	°C	°C	°C	°C	hours	hours		MJ/m ²	MJ/m ²
1	52.9	NW	9:57	29.7	-3.0	-0.5	-0.5	-0.5	-0.5	-0.5	0.5	1.5	3.5	2.4	13.0	18.4	14.2	11.9
2	19.2	SE	11:46	7.9	-3.5	-0.5	-0.5	-0.5	-0.5	0.5	1.5	3.5	8.4	13.1	64.1	17.4	10.9	
3	25.8	SSE	23:49	8.7	-1.5	-0.5	-0.5	-0.5	-1.0	0.5	1.5	3.5	7.3	13.2	55.4	17.7	8.5	
4	39.2	SSE	4:27	18.6	0.5	-0.5	-0.5	-0.5	-1.0	0.5	1.5	3.5	9.6	13.2	72.5	19.4	4.2	
5	37.2	E	9:30	15.5	0.5	0.0	-0.5	-0.5	-1.0	0.5	1.5	3.5	0.0	13.3	0.0	6.9	6.3	
6	22.2	NW	21:03	8.1	-1.0	0.0	-0.5	-0.5	-0.5	0.5	1.5	3.5	11.6	13.4	86.7	22.3	5.0	
7	18.2	S	23:49	7.7	-1.0	0.0	0.0	0.0	0.0	0.5	1.5	3.5	12.8	13.5	95.2	21.4	3.8	
8	44.4	S	22:58	19.8	1.0	0.0	-0.5	-0.5	-0.5	0.5	1.5	3.5	8.4	13.5	62.1	17.7	7.6	
9	38.8	W	13:19	19.0	3.5	0.0	0.0	0.0	0.0	0.5	1.5	3.5	7.1	13.6	52.2	16.6	7.3	
10	44.7	NW	18:30	23.5	-0.5	0.0	-0.5	0.0	-0.5	0.5	1.5	3.5	2.0	13.7	14.7	11.4	9.5	
11	46.2	NW	10:56	25.3	-8.0	0.0	0.0	0.0	0.0	0.5	1.5	3.5	0.1	13.7	0.7	11.9	10.8	
12	38.3	N	20:54	20.9	-9.0	0.0	0.0	0.0	0.0	0.5	1.5	3.5	4.2	13.8	30.5	15.4	11.9	
13	40.9	N	14:44	26.2	-10.0	0.0	0.0	0.0	0.0	0.5	1.5	3.5	0.3	13.9	2.2	12.1	10.7	
14	41.1	N	17:03	25.4	-7.0	0.0	-0.5	0.0	-0.5	0.5	1.5	3.0	0.3	13.9	2.2	11.6	10.2	
15	25.3	N	7:25	10.7	-7.0	-0.5	-0.5	-0.5	-0.5	0.5	1.5	3.0	8.1	14.0	57.9	16.6	12.4	
16	22.8	ESE	17:25	7.3	-4.0	-0.5	0.0	0.0	0.0	0.5	1.5	3.5	11.8	14.1	83.9	18.1	11.1	
17	15.2	E	13:36	6.2	-5.5	-0.5	0.0	0.0	0.0	0.5	1.5	3.5	13.2	14.1	93.4	23.8	5.2	
18	23.0	SW	13:59	8.4	-2.0	0.0	0.0	0.0	0.0	0.5	1.5	3.5	12.4	14.2	87.3	21.8	5.7	
19	45.0	E	14:27	21.4	1.0	0.0	-0.5	0.0	-0.5	0.5	1.5	3.5	2.9	14.3	20.3	11.9	9.5	
20	43.1	NNE	14:14	21.7	-2.5	-0.5	-0.5	-0.5	-0.5	0.5	1.0	3.0	3.9	14.3	27.2	15.0	11.4	
21	30.9	S	13:31	11.2	-1.5	0.0	0.0	0.0	0.0	0.5	1.5	3.5	11.9	14.4	82.7	24.1	6.5	
22	23.9	E	11:58	9.9	1.0	0.0	0.0	0.0	-0.5	0.5	1.5	3.5	0.8	14.5	5.5	9.7	8.5	
23	38.6	N	16:06	15.7	4.5	0.0	-0.5	0.0	-0.5	0.5	1.5	3.0	12.2	14.5	84.0	22.9	6.9	
24	32.1	NNE	10:42	14.5	4.0	0.0	0.0	0.0	0.0	0.5	1.0	3.0	13.8	14.6	94.6	24.9	3.6	
25	30.5	E	14:13	16.3	-1.0	0.0	0.0	0.0	0.0	0.5	1.0	3.0	13.9	14.7	94.8	25.3	3.9	
26	41.8	SE	18:07	20.4	0.5	0.0	0.0	0.0	0.0	0.5	1.0	3.0	14.0	14.7	95.1	24.2	5.3	
27	43.2	SSE	9:33	18.9	2.0	0.0	0.0	0.0	0.0	0.5	1.0	3.0	2.0	14.8	13.5	10.3	7.3	
28	29.0	ENE	15:54	11.1	5.0	0.5	0.5	0.5	0.5	0.5	1.0	3.0	10.5	14.9	70.7	20.9	7.1	
29	32.9	NE	12:40	12.0	9.5	2.5	2.0	1.5	0.0	0.5	1.0	3.0	11.2	14.9	75.1	21.9	6.4	
30	31.8	N	15:15	9.8	10.0	2.5	2.5	2.0	0.0	0.5	1.0	3.0	11.2	15.0	74.8	23.1	5.6	
Total													228.3	420.6	54.3	530.5	235.0	
Mean					-0.8	0.1	-0.1	0.0	-0.3	0.5	1.4	3.3						
Extreme	52.9	NW	9:57															
Date	1																	

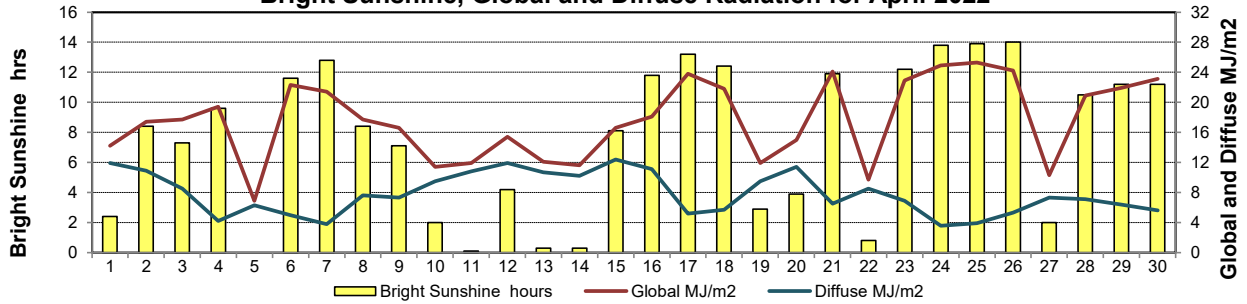
GLOSSARY OF TERMS

Degree-days	Radiation
T_m Mean Temperature	Bright Sunshine is the unobstructed direct radiation from the sun, as opposed to the shading of a location by clouds or by other atmospheric obstructions.
Growing (T _m -5°C); if T _m ≤ 5°C then GDD = 0	
Heating (18°C-T _m); if T _m ≥ 18°C then HDD = 0	
Cooling (T _m -18°C); if T _m ≤ 18°C then CDD = 0	Diffuse is radiation reaching the earth's surface after having been scattered from the direct solar beam
T Trace of Precipitation	Global is the sum of the direct solar and diffuse radiation
SOG Depth of snow-on-the-ground	
Red Cell no data available	Relative Humidity The ratio of the air's water vapour content to its water vapour capacity which changes with temperature.
Red Number manual calculation	Air Pressure The force exerted by the weight of a column of air above a given point
	Wind Gust The daily highest instantaneous value recorded irrespective of direction and/or duration

Wind Speed for April 2022

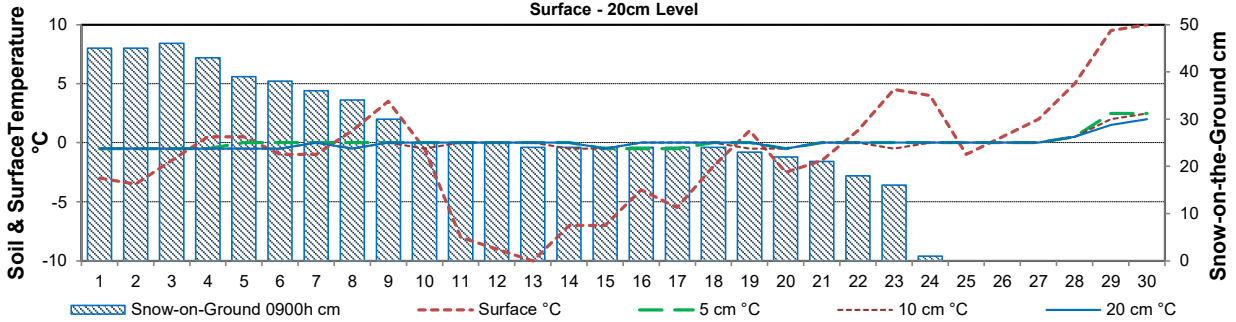


Bright Sunshine, Global and Diffuse Radiation for April 2022



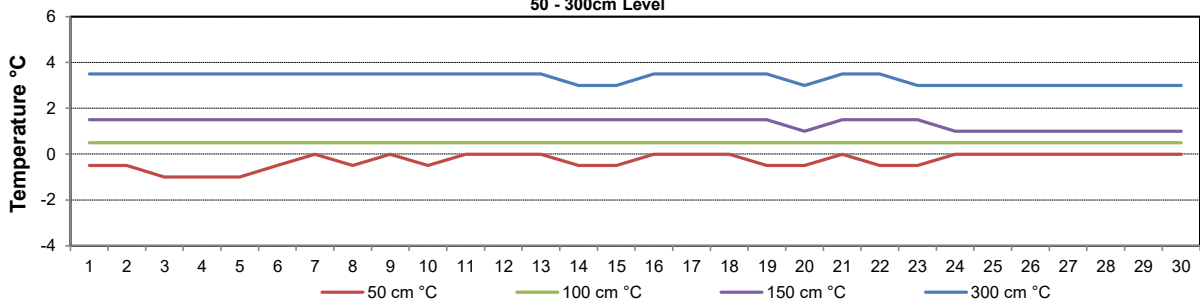
Soil Temperatures for April 2022

Surface - 20cm Level



Soil Temperatures for April 2022

50 - 300cm Level





SRC CLIMATE REFERENCE STATION DAILY DATA REPORT
CONSERVATION LEARNING CENTRE

Saskatchewan 53.03°N 105.77°W 451m asl Estab. 2011

April 2022

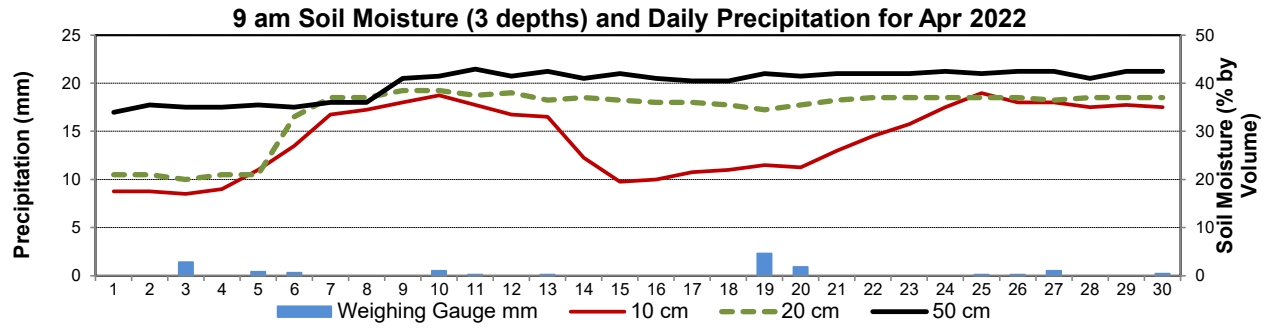
Day	2 meter Wind Speed			Soil Moisture at 0900 hrs (rounded to the 0.5%)													
	Daily Average	Max ½ hr Avg	½ hr Extreme Max	10 cm	20 cm	50 cm											
	km/h	km/h	km/h	% by volume (soil type is Clay Loam)													
1	23.0	32.0	41.0	17.5	21.0	34.0											
2	6.0	9.5	18.5	17.5	21.0	35.5											
3	7.0	12.6	20.4	17.0	20.0	35.0											
4	13.0	21.7	29.8	18.0	21.0	35.0											
5	12.0	23.6	31.0	22.0	21.0	35.5											
6	5.0	13.4	17.2	27.0	33.0	35.0											
7	5.0	11.5	15.4	33.5	37.0	36.0											
8	14.0	26.9	35.0	34.5	37.0	36.0											
9	14.0	19.6	29.6	36.0	38.5	41.0											
10	18.0	22.9	33.5	37.5	38.5	41.5											
11	19.0	24.7	34.8	35.5	37.5	43.0											
12	16.0	20.0	29.5	33.5	38.0	41.5											
13	20.0	23.5	32.5	33.0	36.5	42.5											
14	20.0	23.1	32.0	24.5	37.0	41.0											
15	9.0	13.8	19.9	19.5	36.5	42.0											
16	5.0	12.2	18.1	20.0	36.0	41.0											
17	5.0	8.4	15.6	21.5	36.0	40.5											
18	7.0	11.8	20.4	22.0	35.5	40.5											
19	16.0	24.3	34.1	23.0	34.5	42.0											
20	16.0	22.5	32.3	22.5	35.5	41.5											
21	8.0	18.4	26.0	26.0	36.5	42.0											
22	8.0	15.1	20.6	29.0	37.0	42.0											
23	11.0	21.7	30.0	31.5	37.0	42.0											
24	11.0	17.4	26.6	35.0	37.0	42.5											
25	12.0	17.0	24.8	38.0	37.0	42.0											
26	13.0	19.0	30.0	36.0	37.0	42.5											
27	13.0	20.5	35.8	36.0	36.5	42.5											
28	8.0	16.9	24.3	35.0	37.0	41.0											
29	9.0	15.9	26.8	35.5	37.0	42.5											
30	8.0	13.2	32.7	35.0	37.0	42.5											
Total																	
Mean				28	34	40.1											
Extreme	23.0	32.0	41.0	38	38.5	43											
Date	0	0	0	0	0	0											

SRC proudly recognizes the following CRS supporters:

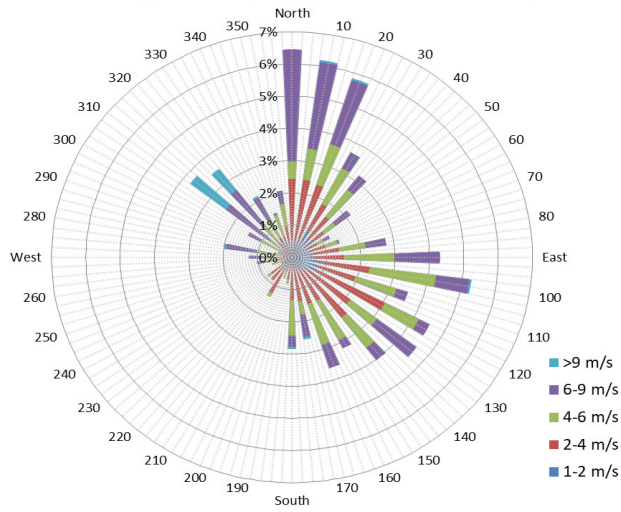


Agriculture and Agri-Food Canada / Agriculture et Agroalimentaire Canada





10 minute Average Wind Speed and Direction CLC April 2022



1/2 hr Maximum Wind Speed and Direction CLC April 2022

