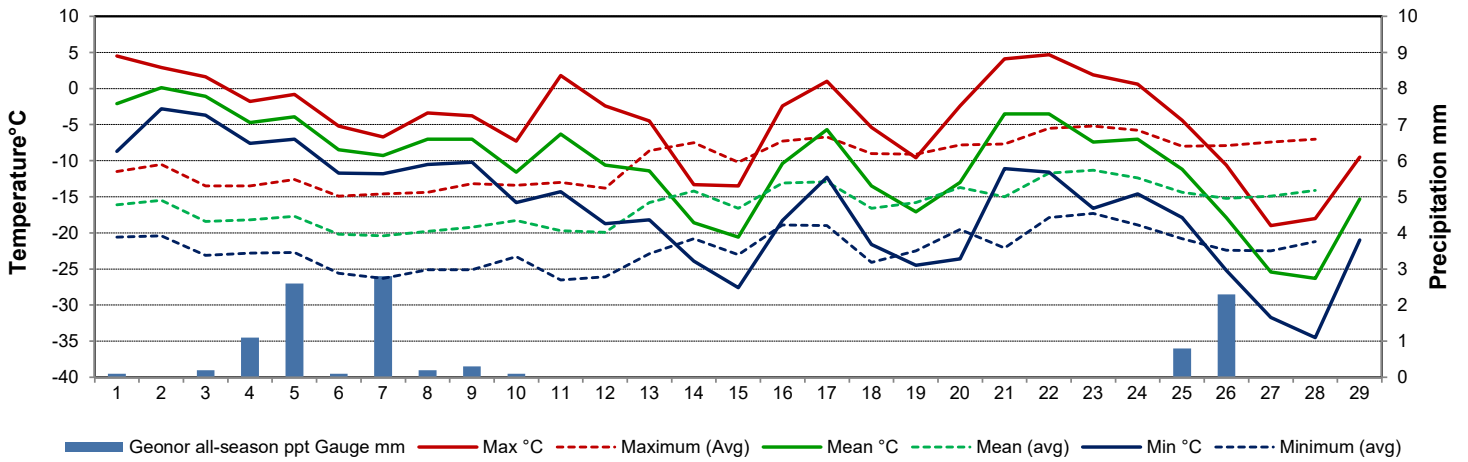
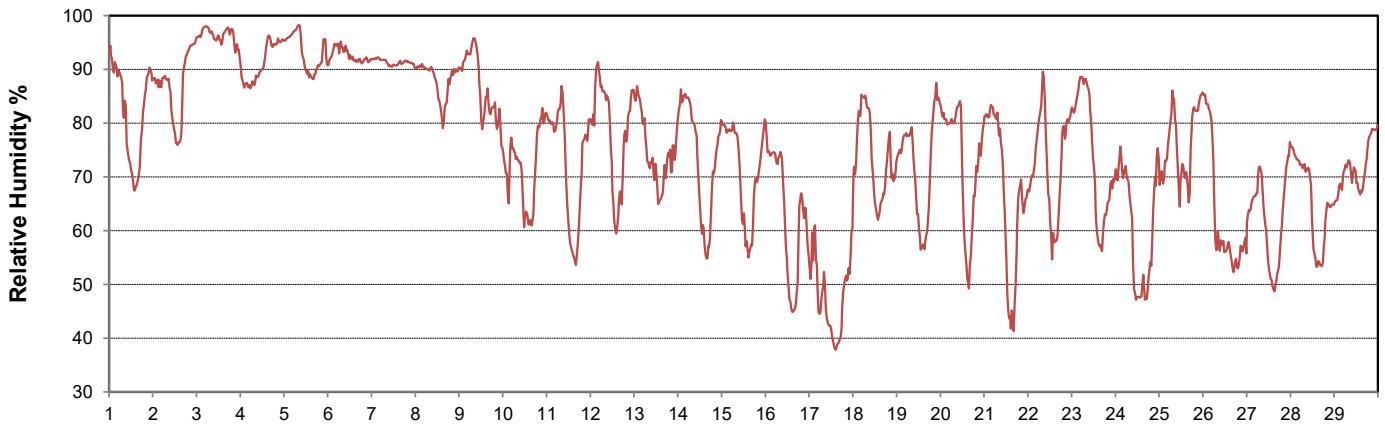




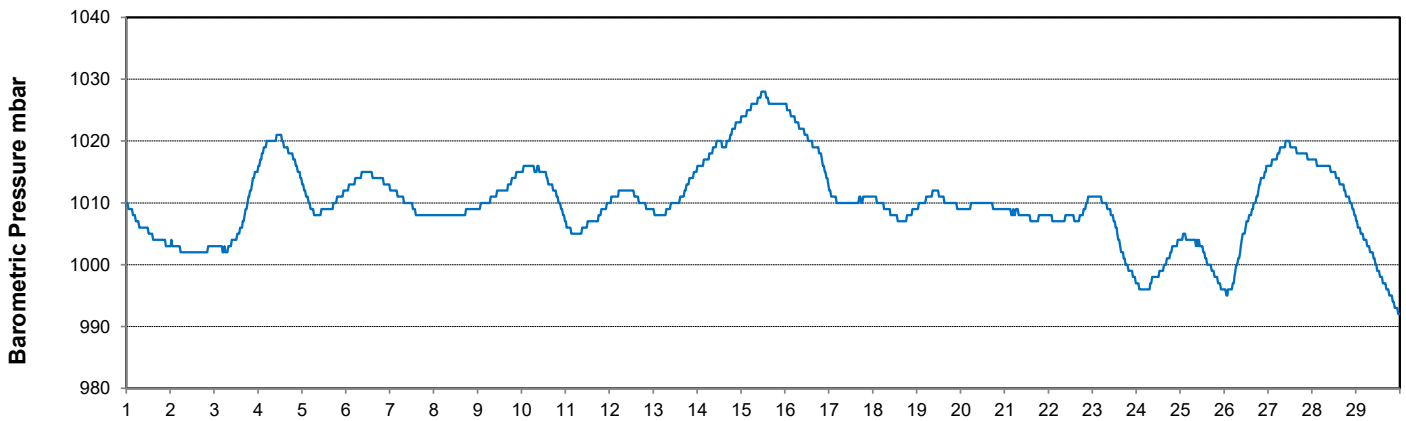
### Temperature and Precipitation for February 2024



### Relative Humidity for February 2024

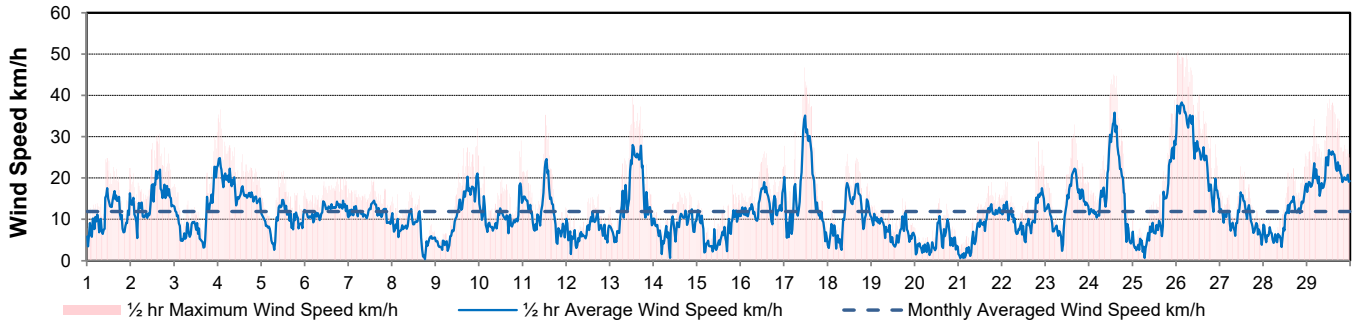


### Barometric Pressure Corrected to Sea Level for February 2024

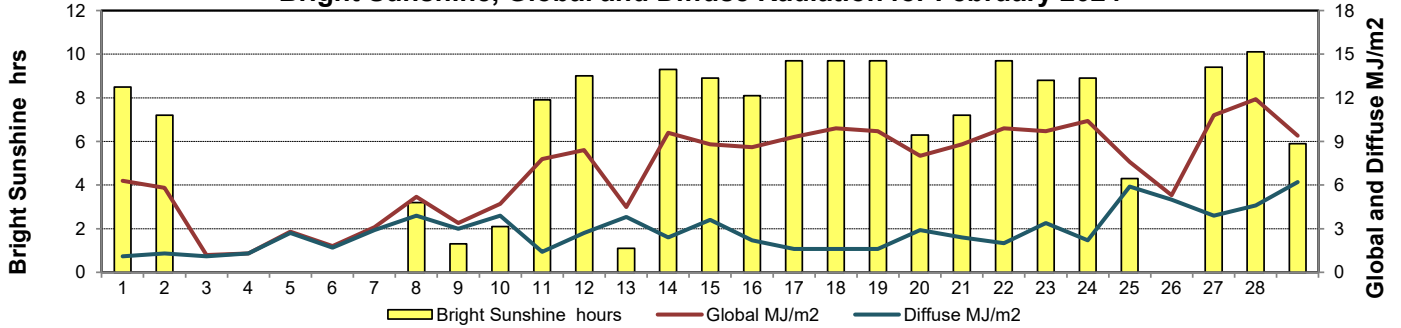




### Wind Speed for February 2024

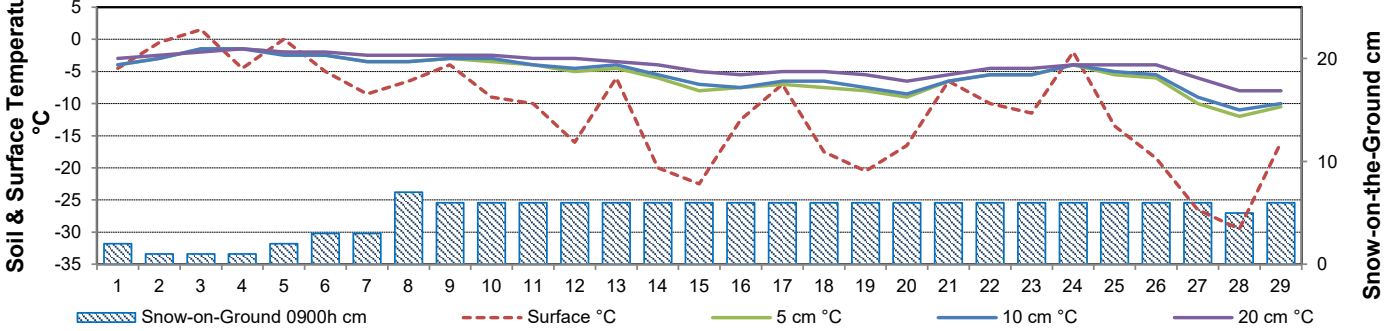


### Bright Sunshine, Global and Diffuse Radiation for February 2024



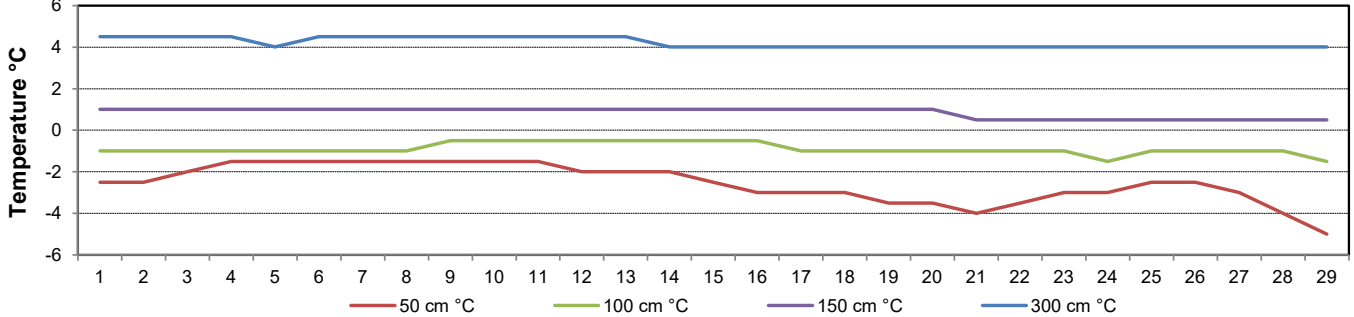
### Soil Temperatures for February 2024

Surface - 20cm Level



### Soil Temperatures for February 2024

50 - 300cm Level





# SRC CLIMATE REFERENCE STATION DAILY DATA REPORT CONSERVATION LEARNING CENTRE

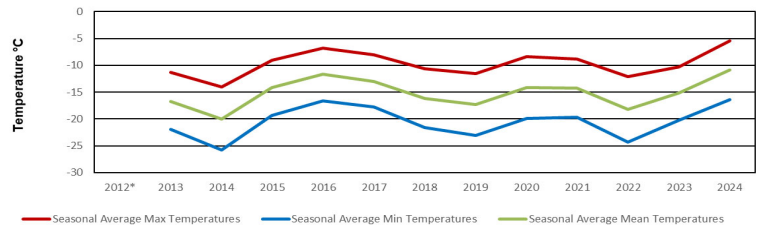
Saskatchewan 53.03°N 105.77°W 451m asl Estab. 2011

Preliminary

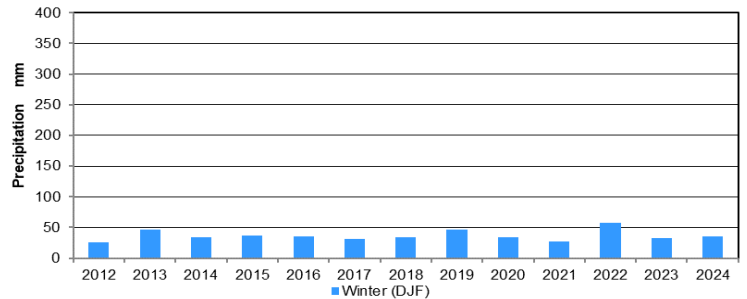
February 2024

Day	2 meter Wind Speed			Soil Moisture at 0900 hrs (rounded to the 0.5%)		
	Daily Average	Max ½ hr Avg	½ hr Extreme Max	10 cm	20 cm	50 cm
	km/h	km/h	km/h	% by volume (soil type is Clay Loam)		
1	6.0	12.5	19.3	14.5	16.0	25.0
2	10.0	16.2	23.9	14.0	16.0	25.5
3	6.0	18.2	26.0	16.0	17.0	25.5
4	14.0	18.7	26.4	17.0	17.5	26.0
5	8.0	12.4	17.6	16.0	17.0	26.0
6	11.0	12.5	18.5	16.0	17.5	26.0
7	11.0	14.0	20.2	15.0	16.5	26.0
8	7.0	11.5	16.4	15.0	16.5	26.0
9	9.0	16.6	26.0	15.5	16.5	26.0
10	9.0	14.9	23.1	15.5	17.0	26.0
11	8.0	18.9	26.8	15.0	16.0	26.0
12	2.0	10.0	13.9	14.5	16.5	26.0
13	11.0	21.0	29.8	14.5	16.0	26.0
14	5.0	9.0	14.5	14.0	16.0	26.0
15	5.0	10.4	14.5	13.5	15.5	26.0
16	11.0	14.4	21.2	13.0	15.0	25.5
17	12.0	26.1	33.9	13.0	15.0	25.0
18	8.0	15.8	21.0	13.0	15.0	24.5
19	4.0	8.3	12.8	13.0	15.0	24.5
20	1.0	9.9	12.8	13.0	14.5	24.5
21	5.0	10.8	14.3	13.0	14.5	24.5
22	8.0	14.2	22.2	13.5	15.0	24.0
23	10.0	18.0	25.4	13.5	15.0	24.5
24	13.0	26.8	34.4	13.5	15.5	24.5
25	7.0	22.3	30.2	14.0	15.5	24.5
26	20.0	28.6	42.5	13.5	15.5	24.5
27	6.0	13.7	19.3	12.0	14.5	24.5
28	5.0	14.4	21.2	11.5	13.5	24.5
29	16.0	19.1	32.0	12.0	13.5	24.0
Total						
Mean				14	16	25.2
Extreme	20.0	28.6	42.5	17	17.5	26
Date	0	0	0	0	0	0

Winter (DJF) Temperature trends (2013 to 2024)



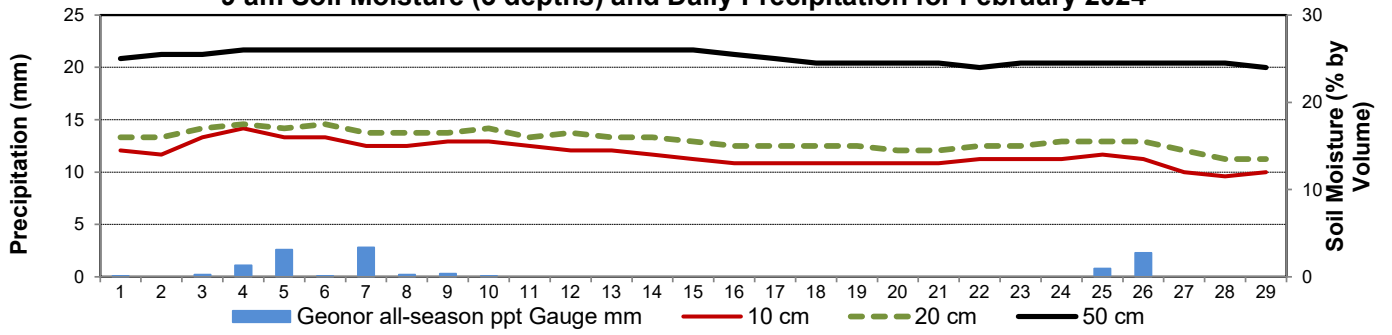
Winter (DJF) Precipitation trends (2012 to 2024)



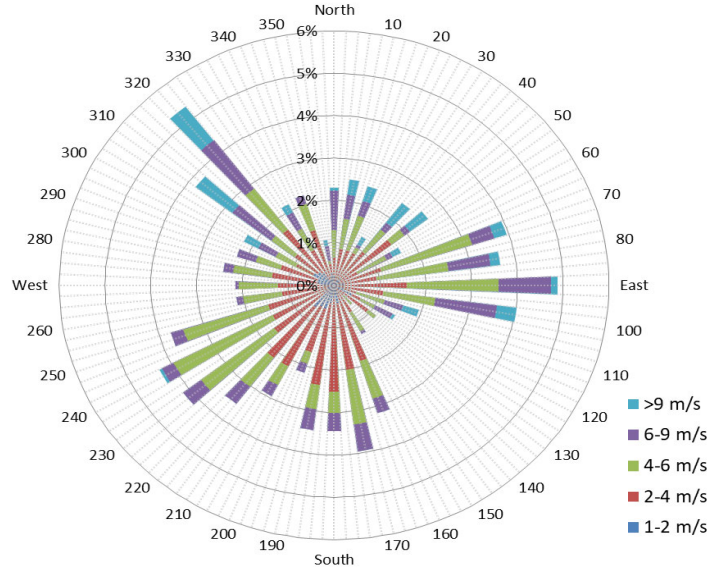
**SRC proudly recognizes the following CRS supporters:**



### 9 am Soil Moisture (3 depths) and Daily Precipitation for February 2024



### 1/2 hr Maximum Wind Speed and Direction CLC Feb 2024



### 10 minute Average Wind Speed and Direction CLC Feb 2024

