



SRC CLIMATE REFERENCE STATION DAILY DATA REPORT

CONSERVATION LEARNING CENTRE

Saskatchewan 53.03°N 105.77°W 451m asl Estab. 2011

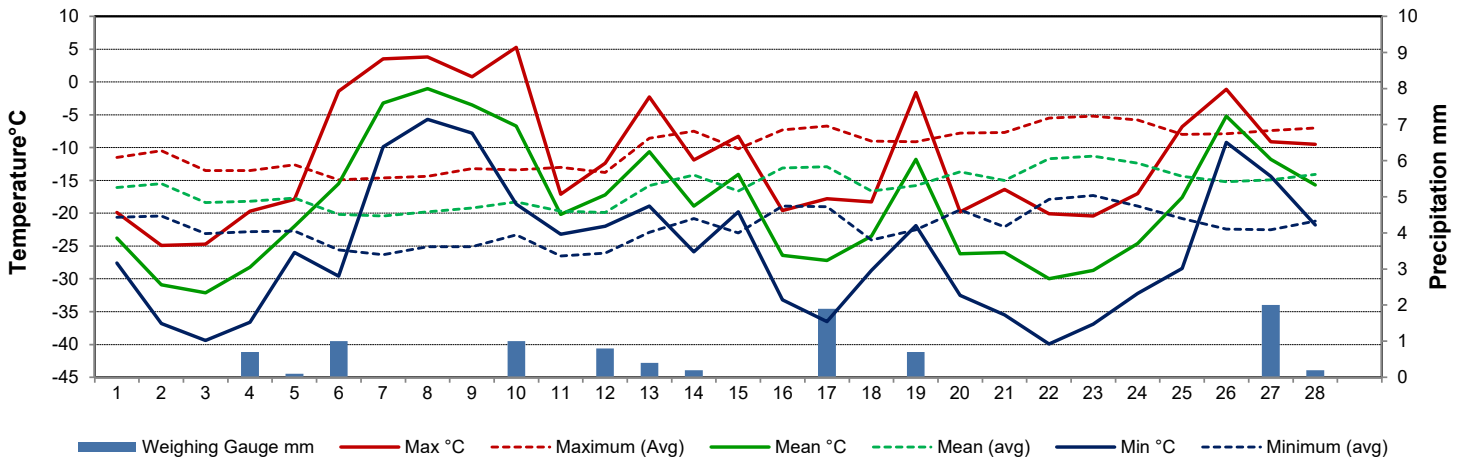
Preliminary **February 2022**

Day	Temperature						Degree-days			Precipitation			Relative Humidity		Station Pressure <i>corrected to sea level</i>	
	Max	Avg Max	Min	Avg Min	Mean	Avg Mean	Growing	Heating	Cooling	Weighing Gauge	Notes	Snow-on-Ground 0900h	Max ½ hr Avg	Min ½ hr Avg	Max ½ hr Avg	Min ½ hr Avg
	°C	2012-2021	°C	2012-2021	°C	2012-2021	5°C base	18°C base	18°C base	mm		cm	%	%	mbar	mbar
1	-19.9	-11.5	-27.6	-20.6	-23.8	-16.1	0.0	41.8	0.0	0.0		52	83	70	1029	1014
2	-24.9	-10.5	-36.8	-20.4	-30.9	-15.5	0.0	48.9	0.0	0.0		51	81	64	1034	1026
3	-24.7	-13.5	-39.4	-23.1	-32.1	-18.4	0.0	50.1	0.0	0.0	0.0	51	81	70	1030	1020
4	-19.7	-13.5	-36.6	-22.8	-28.2	-18.2	0.0	46.2	0.0	0.7		51	84	74	1031	1007
5	-17.9	-12.6	-26.0	-22.7	-22.0	-17.7	0.0	40.0	0.0	0.1		53	88	74	1019	1006
6	-1.4	-14.9	-29.6	-25.6	-15.5	-20.2	0.0	33.5	0.0	1.0		52	93	82	1019	1007
7	3.5	-14.6	-9.9	-26.3	-3.2	-20.4	0.0	21.2	0.0	0.0		55	95	72	1007	995
8	3.8	-14.4	-5.7	-25.1	-1.0	-19.8	0.0	19.0	0.0	0.0		53	92	75	1013	998
9	0.8	-13.2	-7.8	-25.1	-3.5	-19.2	0.0	21.5	0.0	0.0		53	97	74	1013	1002
10	5.3	-13.4	-18.6	-23.3	-6.7	-18.3	0.0	24.7	0.0	1.0		50	98	74	1016	991
11	-17.1	-13.0	-23.2	-26.5	-20.2	-19.7	0.0	38.2	0.0	0.0		46	85	63	1030	1016
12	-12.4	-13.8	-22.0	-26.1	-17.2	-19.9	0.0	35.2	0.0	0.8		47	89	64	1026	1018
13	-2.3	-8.6	-18.9	-22.9	-10.6	-15.8	0.0	28.6	0.0	0.4		55	92	70	1023	1005
14	-11.9	-7.5	-25.9	-20.8	-18.9	-14.2	0.0	36.9	0.0	0.2		53	90	77	1023	1017
15	-8.3	-10.2	-19.8	-23.0	-14.1	-16.6	0.0	32.1	0.0	0.0		53	88	72	1017	1006
16	-19.6	-7.3	-33.2	-18.9	-26.4	-13.1	0.0	44.4	0.0	0.0		52	82	61	1025	1012
17	-17.8	-6.7	-36.5	-19.0	-27.2	-12.9	0.0	45.2	0.0	1.9		52	86	66	1025	1003
18	-18.3	-9.0	-28.7	-24.1	-23.5	-16.6	0.0	41.5	0.0	0.0		60	85	62	1023	1006
19	-1.6	-9.1	-21.9	-22.5	-11.8	-15.8	0.0	29.8	0.0	0.7		63	87	69	1015	992
20	-19.8	-7.8	-32.5	-19.5	-26.2	-13.7	0.0	44.2	0.0	0.0		60	87	54	1028	1008
21	-16.4	-7.7	-35.5	-22.1	-26.0	-15.0	0.0	44.0	0.0	0.0		60	84	48	1036	1029
22	-20.1	-5.5	-39.9	-17.9	-30.0	-11.7	0.0	48.0	0.0	0.0		58	83	64	1036	1033
23	-20.4	-5.2	-36.9	-17.3	-28.7	-11.3	0.0	46.7	0.0	0.0		58	84	66	1033	1024
24	-17.0	-5.8	-32.2	-18.9	-24.6	-12.4	0.0	42.6	0.0	0.0		57	85	61	1024	1021
25	-6.8	-8.0	-28.4	-20.8	-17.6	-14.4	0.0	35.6	0.0	0.0		57	84	70	1021	1009
26	-1.1	-7.9	-9.2	-22.4	-5.2	-15.2	0.0	23.2	0.0	0.0		58	94	74	1016	1009
27	-9.1	-7.4	-14.4	-22.5	-11.8	-14.9	0.0	29.8	0.0	2.0		57	90	70	1019	1015
28	-9.5	-7.0	-21.8	-21.2	-15.7	-14.1	0.0	33.7	0.0	0.2		60	92	76	1015	1012
Total							0.0	1026.6	0.0	9.0			Extreme / Date	Extreme / Date	Extreme / Date	Extreme / Date
Avg	-11.6	-9.9	-25.7	-22.1	-18.7	-16.1	Monthly 2012 - 2021 Average			9.8	2012-2021 Average					
Extreme	5.3	6.9	-39.9	-44.9			0	964.3	0	28.1	2022 Cumulative ppt		98	48	1036	991
Date	10	2017	22	2019						27.7	Cumulative Average		10	21	21	10

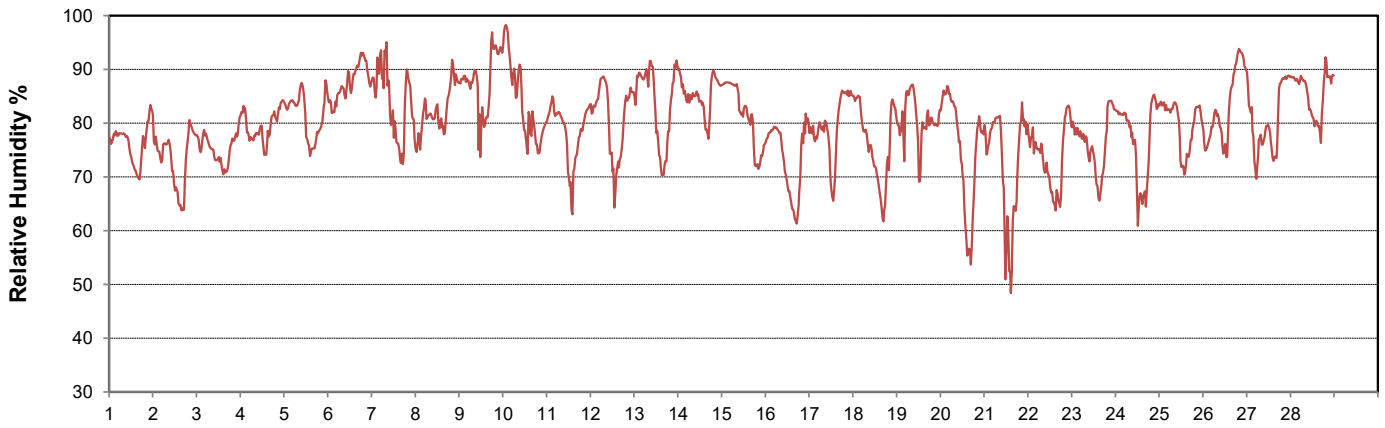
SRC proudly recognizes the following CRS supporters:



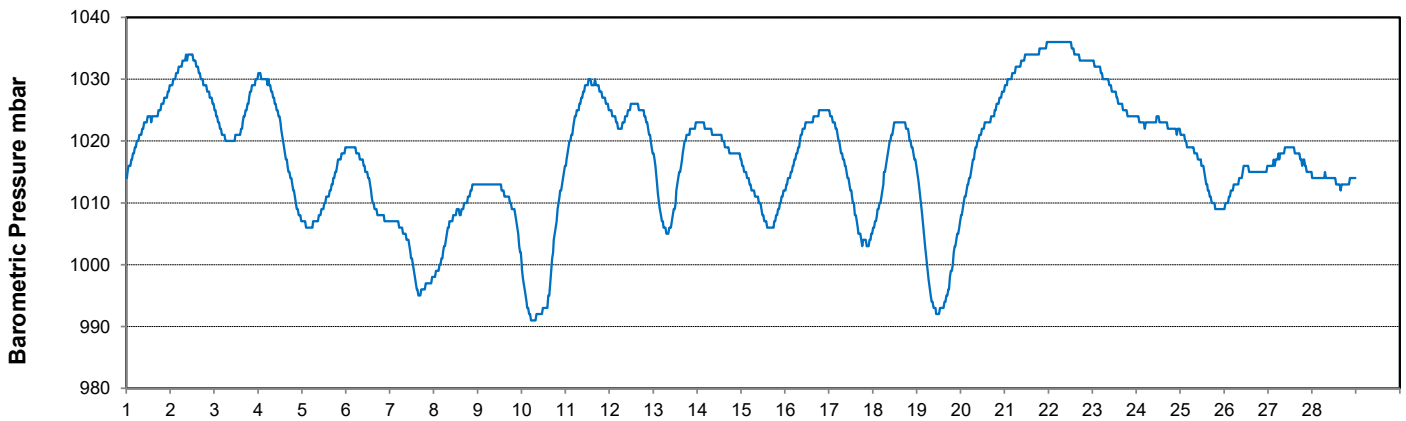
Temperature and Precipitation for February 2022



Relative Humidity for February 2022



Barometric Pressure Corrected to Sea Level for February 2022





SRC CLIMATE REFERENCE STATION DAILY DATA REPORT

CONSERVATION LEARNING CENTRE

Saskatchewan 53.03°N 105.77°W 451m asl Estab. 2011

Preliminary

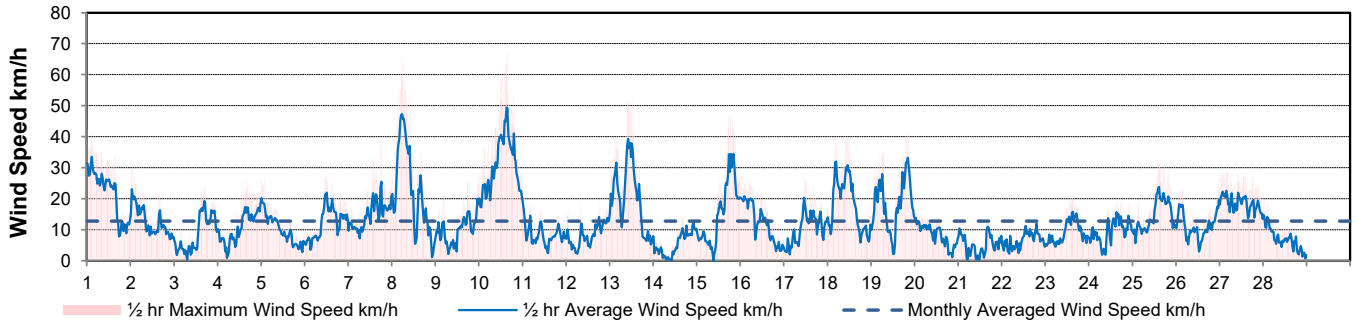
February 2022

Day	Wind Gust			Wind Speed <small>(10 meters)</small>	Soil Temperatures at 0900hrs								Radiation				
	Max	Direction	Time	Daily Average	Surface	5 cm	10 cm	20 cm	50 cm	100 cm	150 cm	300 cm	Bright Sunshine	Bright Sunshine Possible	% Possible	Global	Diffuse
	km/h			km/h	°C	°C	°C	°C	°C	°C	°C	°C	hours	hours		MJ/m ²	MJ/m ²
1	42.4	NNW	0:21	21.7	-11.0	-1.5	-1.0	-1.0	0.0	1.0	2.5	5.0	8.7	9.0	96.3	6.8	1.7
2	30.2	NW	1:01	12.3	-13.5	-1.5	-1.5	-1.0	0.0	1.0	2.5	5.0	8.7	9.1	95.7	8.5	1.7
3	24.0	NW	16:43	8.4	-15.5	-1.5	-1.5	-1.0	0.0	1.0	2.5	5.0	8.2	9.2	89.6	7.7	2.0
4	25.8	SE	16:39	10.7	-15.0	-2.0	-2.0	-1.0	0.0	1.0	2.5	5.0	1.4	9.2	15.2	4.7	4.2
5	26.0	E	0:15	9.7	-11.0	-2.5	-2.0	-1.5	0.0	1.0	2.5	5.0	1.0	9.3	10.8	5.0	4.5
6	28.1	S	12:18	12.2	-11.0	-2.5	-2.0	-1.5	0.0	1.0	2.5	5.0	0.0	9.3	0.0	4.2	4.1
7	39.2	E	17:50	14.7	-6.5	-2.0	-2.0	-1.5	0.0	1.0	2.5	5.0	2.2	9.4	23.4	5.3	4.3
8	65.6	NW	5:40	22.2	-1.5	-2.0	-2.0	-1.5	0.0	1.0	2.5	4.5	2.3	9.5	24.3	5.0	4.3
9	28.2	SW	23:23	9.9	-3.5	-2.0	-1.5	-1.0	0.0	1.0	2.5	5.0	4.8	9.5	50.4	6.7	3.7
10	67.3	NNW	15:30	30.6	0.0	-1.5	-1.5	-1.0	0.0	1.0	2.0	4.5	3.4	9.6	35.5	5.9	3.5
11	22.5	N	0:16	8.3	-13.5	-1.0	-1.0	-1.0	0.0	1.0	2.5	5.0	4.6	9.7	47.6	7.5	2.7
12	17.9	ENE	8:20	8.3	-12.5	-1.5	-1.0	-1.0	0.0	1.0	2.0	5.0	8.3	9.7	85.4	4.5	1.8
13	51.5	NNW	10:26	20.3	-7.0	-1.5	-1.5	-1.0	0.0	1.0	2.0	4.5	5.2	9.8	53.1	7.2	3.5
14	14.8	ENE	22:03	5.5	-9.0	-1.5	-1.5	-1.0	0.0	1.0	2.0	4.5	6.8	9.9	69.0	8.0	4.2
15	46.1	NNW	18:38	15.6	-8.0	-1.5	-1.5	-1.0	0.0	1.0	2.0	4.5	0.7	9.9	7.1	6.1	5.5
16	27.0	NNW	0:49	12.3	-11.5	-1.5	-1.5	-1.0	0.0	1.0	2.0	4.5	9.6	10.0	96.1	9.9	1.9
17	27.1	SSE	11:16	10.2	-14.0	-2.0	-1.5	-1.0	0.0	1.0	2.0	4.5	3.0	10.1	29.9	7.4	5.0
18	39.8	NW	4:41	18.1	-9.5	-2.0	-2.0	-1.0	0.0	1.0	2.0	4.5	9.5	10.1	93.9	10.6	2.2
19	41.2	N	20:17	18.3	-9.5	-2.0	-2.0	-1.0	0.0	1.0	2.0	4.5	0.1	10.2	1.0	6.1	5.9
20	15.8	NNE	0:12	8.2	-11.5	-2.0	-2.0	-1.0	0.0	1.0	2.0	4.5	9.3	10.3	90.6	11.2	2.7
21	13.2	S	15:43	5.2	-13.0	-2.0	-2.0	-1.0	0.0	1.0	2.0	4.5	9.5	10.3	92.1	10.9	2.3
22	14.8	WSW	19:23	6.5	-17.0	-2.0	-2.0	-1.0	0.0	1.0	2.0	4.5	10.0	10.4	96.2	11.7	2.6
23	21.0	SSW	14:52	9.0	-17.5	-2.0	-2.0	-1.0	0.0	1.0	2.0	4.5	9.9	10.5	94.6	12.2	2.7
24	19.2	S	16:07	9.5	-16.0	-2.0	-2.0	-1.5	0.0	1.0	2.0	4.5	9.8	10.5	93.1	12.7	2.7
25	32.4	SW	15:04	14.3	-15.5	-2.5	-2.0	-1.5	0.0	1.0	2.0	4.5	6.8	10.6	64.2	11.1	4.2
26	26.7	E	23:43	11.1	-7.0	-2.5	-2.0	-1.5	-1.0	1.0	2.0	4.5	1.1	10.7	10.3	7.5	6.8
27	28.6	ENE	3:58	18.4	-8.5	-2.0	-2.0	-1.5	-0.5	1.0	2.0	4.5	0.0	10.7	0.0	7.1	6.6
28	21.9	E	0:29	6.8	-8.0	-2.0	-2.0	-1.5	-0.5	1.0	2.0	4.5	0.4	10.8	3.7	7.8	7.3
Total													145.3	277.1	52.4	219.3	104.6
Mean				12.8	-10.6	-1.9	-1.7	-1.2	-0.1	1.0	2.2	4.7					
Extreme	67.3	NNW	15:30														
Date	10																

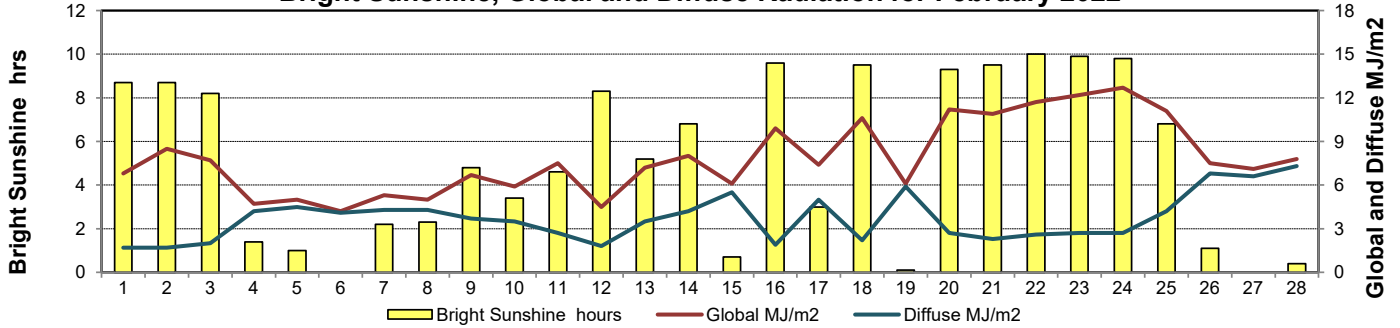
GLOSSARY OF TERMS

Degree-days	Radiation
T _m Mean Temperature	Bright Sunshine is the unobstructed direct radiation from the sun, as opposed to the shading of a location by clouds or by other atmospheric obstructions.
Growing (T _m -5°C); if T _m ≤ 5°C then GDD = 0	
Heating (18°C-T _m); if T _m ≥ 18°C then HDD = 0	
Cooling (T _m -18°C); if T _m ≤ 18°C then CDD = 0	Diffuse is radiation reaching the earth's surface after having been scattered from the direct solar beam
T Trace of Precipitation	Global is the sum of the direct solar and diffuse radiation
SOG Depth of snow-on-the-ground	Relative Humidity The ratio of the air's water vapour content to its water vapour capacity which changes with temperature.
Red Cell no data available	Air Pressure The force exerted by the weight of a column of air above a given point
Red Number manual calculation	Wind Gust The daily highest instantaneous value recorded irrespective of direction and/or duration

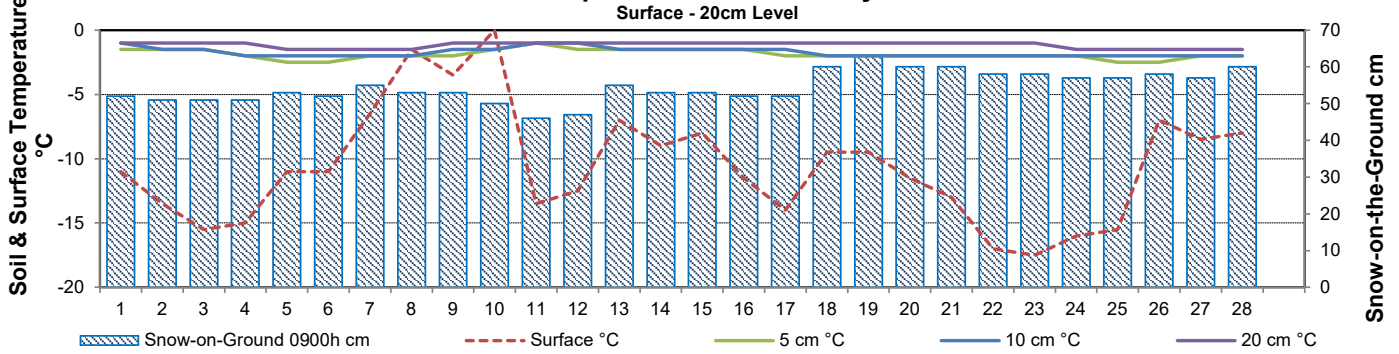
Wind Speed for February 2022



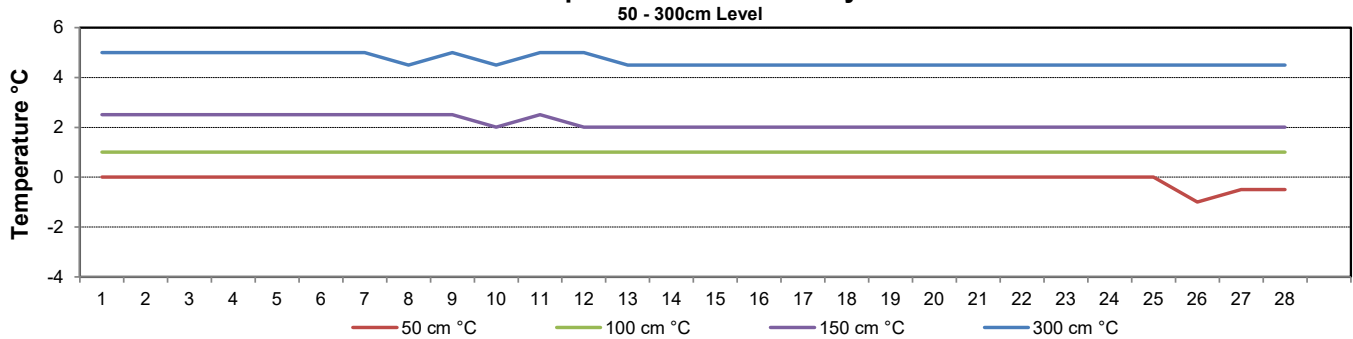
Bright Sunshine, Global and Diffuse Radiation for February 2022



Soil Temperatures for February 2022



Soil Temperatures for February 2022





SRC CLIMATE REFERENCE STATION DAILY DATA REPORT

CONSERVATION LEARNING CENTRE

Saskatchewan 53.03°N 105.77°W 451m asl Estab. 2011

Preliminary

February 2022

Day	2 meter Wind Speed			Soil Moisture at 0900 hrs (rounded to the 0.5%)															
	Daily Average	Max ½ hr Avg	½ hr Extreme Max	10 cm	20 cm	50 cm													
	km/h	km/h	km/h	% by volume (soil type is Clay Loam)															
1	17.0	26.9	34.1	15.5	19.0	33.5													
2	9.0	17.2	24.7	15.5	19.0	33.5													
3	6.0	14.6	18.9	15.5	19.0	33.5													
4	7.0	16.2	22.4	15.5	18.5	33.5													
5	9.0	17.7	22.7	15.0	18.5	33.5													
6	9.0	18.4	24.5	15.0	18.5	33.5													
7	12.0	20.2	29.5	15.0	19.0	33.5													
8	18.0	37.2	50.4	15.0	18.5	33.0													
9	9.0	17.0	22.7	15.0	19.0	33.0													
10	24.0	38.6	51.9	15.5	18.5	39.5													
11	7.0	14.8	19.1	16.0	19.5	41.5													
12	7.0	11.9	14.7	16.0	19.5	41.0													
13	16.0	31.1	42.9	16.0	19.5	40.5													
14	3.0	10.0	12.4	16.0	19.5	40.0													
15	12.0	27.5	36.2	16.0	19.5	40.5													
16	9.0	16.2	21.6	15.5	19.5	39.5													
17	6.0	16.1	25.6	16.0	19.5	40.5													
18	13.0	23.7	31.0	15.5	19.0	39.0													
19	15.0	27.0	33.5	15.5	18.5	40.0													
20	5.0	9.8	12.4	15.0	18.5	38.5													
21	3.0	8.7	11.4	15.0	19.0	39.5													
22	5.0	10.7	13.7	15.5	18.5	40.0													
23	6.0	14.3	18.3	15.5	19.0	40.0													
24	7.0	13.5	17.2	15.0	18.5	39.5													
25	12.0	20.6	27.0	15.0	18.5	39.0													
26	10.0	17.2	22.2	15.0	18.0	38.5													
27	16.0	19.4	26.6	15.0	18.0	38.0													
28	6.0	13.2	19.1	15.5	18.5	37.0													
Total																			
Mean				15	19	37.6													
Extreme	24.0	38.6	51.9	16	19.5	41.5													
Date	0	0	0	0	0	0													

SRC proudly recognizes the following CRS supporters:

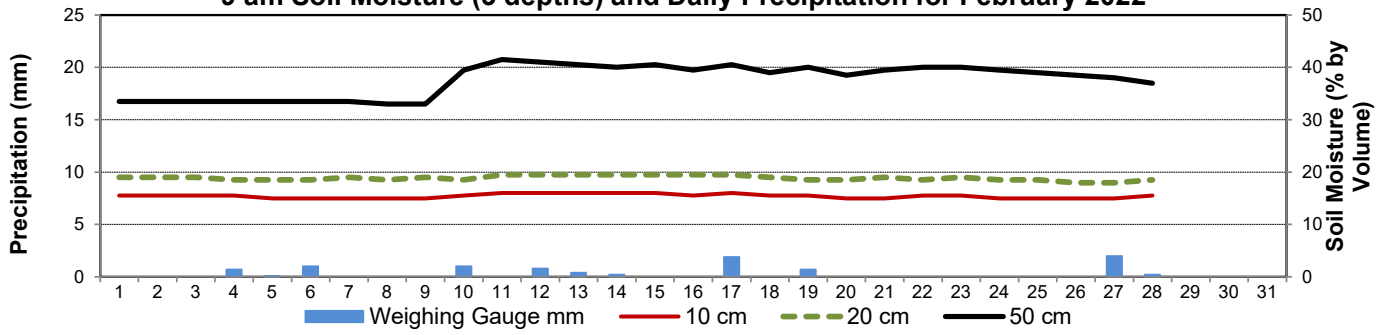


Agriculture and Agri-Food Canada

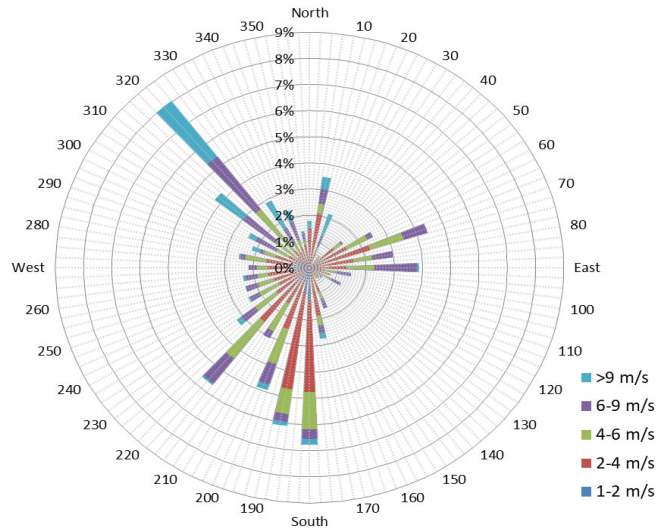
Agriculture et Agroalimentaire Canada



9 am Soil Moisture (3 depths) and Daily Precipitation for February 2022



1/2 hr Maximum Wind Speed and Direction CLC Feb 2022



10 minute Average Wind Speed and Direction CLC Feb 2022

