



# SRC CLIMATE REFERENCE STATION DAILY DATA REPORT

**SASKATOON STATION 4057180**

52°09' N 106°36' W 497 m asl Estab. 1963

Preliminary **FEBRUARY 2019**

Day	Temperature						Degree-days			Precipitation			Relative Humidity		Station Pressure (sea level)	
	Max	Normal Max	Min	Normal Min	Mean	Normal Mean	Growing	Heating	Cooling	Weighing Gauge	Notes	Snow-on-Ground 0900h	Max ½ hr Avg	Min ½ hr Avg	Max ½ hr Avg	Min ½ hr Avg
	°C	1981-2010	°C	1981-2010	°C	1981-2010	5°C base	18°C base	18°C base	mm		cm	%	%	mbar	mbar
1	-10.7	-9.1	-20.0	-19.4	-15.4	-14.2	0.0	33.4	0.0	2.1	snow	11	90	72	1014	1005
2	-19.0	-9.8	-24.1	-18.2	-21.6	-14.0	0.0	39.6	0.0	2.9	snow	13	79	71	1016	1006
3	-23.0	-9.7	-25.8	-19.5	-24.4	-14.6	0.0	42.4	0.0	0.1	light snow	15	74	67	1024	1016
4	-23.1	-8.2	-25.4	-18.7	-24.3	-13.5	0.0	42.3	0.0	2.7	snow	15	78	67	1025	1022
5	-22.8	-6.9	-32.8	-16.0	-27.8	-11.5	0.0	45.8	0.0	0.0		17	78	70	1025	1020
6	-21.3	-6.8	-37.3	-16.5	-29.3	-11.7	0.0	47.3	0.0	0.2	light snow	17	74	65	1031	1025
7	-23.3	-8.8	-35.0	-19.2	-29.2	-14.0	0.0	47.2	0.0	0.0		17	74	67	1032	1028
8	-23.6	-9.7	-38.9	-19.1	-31.3	-14.4	0.0	49.3	0.0	0.1		17	74	63	1036	1028
9	-21.2	-10.6	-32.7	-20.5	-27.0	-15.5	0.0	45.0	0.0	0.0		17	76	69	1039	1034
10	-22.9	-9.9	-35.1	-19.8	-29.0	-14.9	0.0	47.0	0.0	0.3	light snow	17	78	66	1034	1020
11	-17.6	-8.7	-26.3	-18.9	-22.0	-13.8	0.0	40.0	0.0	0.8	light snow	16	82	76	1020	1015
12	-22.6	-6.7	-30.7	-18.2	-26.7	-12.4	0.0	44.7	0.0	0.1		17	79	71	1020	1014
13	-22.1	-7.4	-30.3	-17.1	-26.2	-12.3	0.0	44.2	0.0	0.0		17	77	71	1014	1008
14	-16.0	-9.3	-29.3	-19.1	-22.7	-14.2	0.0	40.7	0.0	0.0		16	79	73	1019	1011
15	-18.9	-7.9	-34.1	-18.3	-26.5	-13.1	0.0	44.5	0.0	0.2	light snow	17	78	69	1019	1013
16	-13.6	-6.9	-19.1	-15.4	-16.4	-11.1	0.0	34.4	0.0	1.9	snow	20	85	74	1021	1012
17	-14.6	-7.2	-20.2	-16.5	-17.4	-11.8	0.0	35.4	0.0	0.4	light snow	27	85	74	1031	1013
18	-14.0	-6.8	-25.4	-16.6	-19.7	-11.7	0.0	37.7	0.0	0.2	light snow	25	82	61	1031	1021
19	-12.7	-4.7	-26.7	-15.1	-19.7	-9.9	0.0	37.7	0.0	0.0		23	79	60	1020	1006
20	-12.8	-4.6	-21.5	-14.9	-17.2	-9.8	0.0	35.2	0.0	1.1	light snow	21	88	76	1015	1004
21	-13.0	-3.6	-21.4	-13.5	-17.2	-8.5	0.0	35.2	0.0	0.2		22	87	63	1021	1015
22	-11.2	-4.9	-25.2	-14.4	-18.2	-9.6	0.0	36.2	0.0	0.0		22	83	63	1019	1009
23	-14.3	-5.6	-25.1	-15.7	-19.7	-10.7	0.0	37.7	0.0	0.1	light snow	21	83	62	1027	1010
24	-21.4	-5.9	-29.3	-15.6	-25.4	-10.7	0.0	43.4	0.0	0.0		15	77	60	1031	1027
25	-17.6	-5.6	-31.8	-15.5	-24.7	-10.6	0.0	42.7	0.0	0.0		15	78	62	1030	1028
26	-16.2	-6.1	-29.8	-15.8	-23.0	-11.0	0.0	41.0	0.0	0.2	light snow	15	78	60	1029	1021
27	-4.6	-5.0	-16.4	-15.7	-10.5	-10.4	0.0	28.5	0.0	0.0		16	84	62	1021	1013
28	-10.8	-4.4	-15.7	-13.5	-13.3	-9.0	0.0	31.3	0.0	0.6	light snow	15	88	68	1016	1014
Total							0.0	1129.8	0.0	14.2			Extreme / Date	Extreme / Date	Extreme / Date	Extreme / Date
Avg	-17.3	-7.1	-27.3	-16.9	-22.4	-12.0	1981-2010 Normal			9.3	Normal					
Extreme Date	-4.6		-38.9				0.0	848.2	0.0	22.6	Cumulative		90	60	1039	1004
	27		8							24.8	Cum. Normal		1	19	9	20

Note: Red numbers indicate manual calculation; Red cell indicate data not available

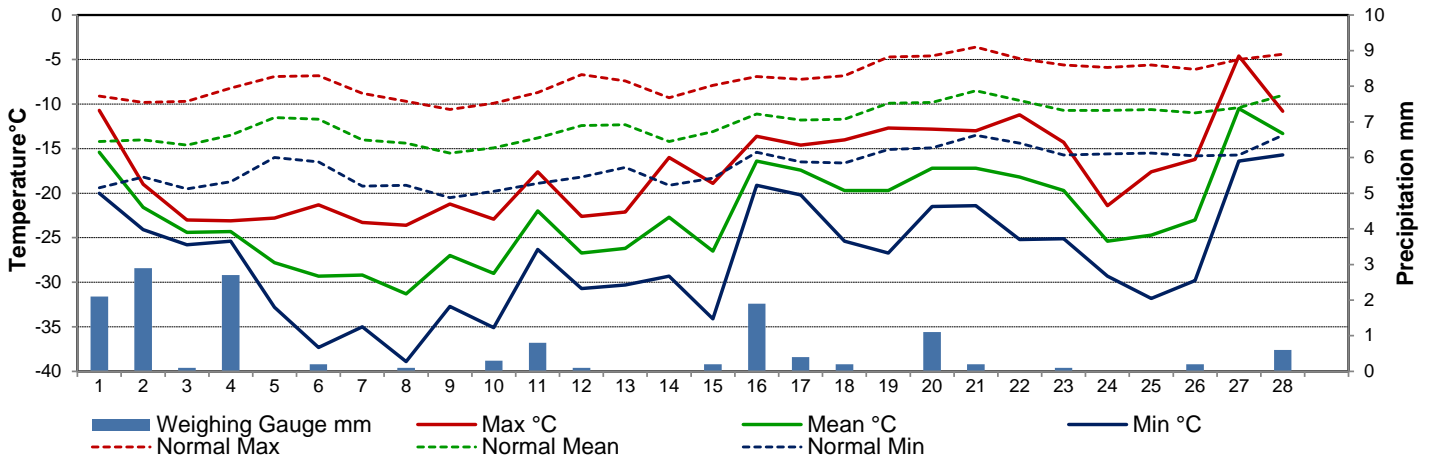
**SRC proudly recognizes the following CRS supporters:**



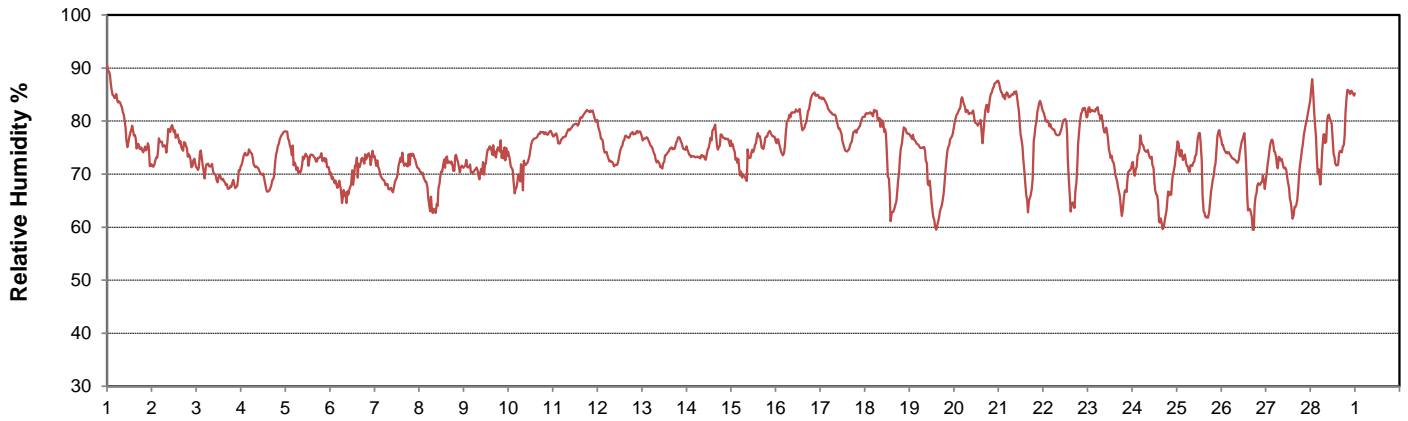
Agriculture and Agri-Food Canada / Agriculture et Agroalimentaire Canada



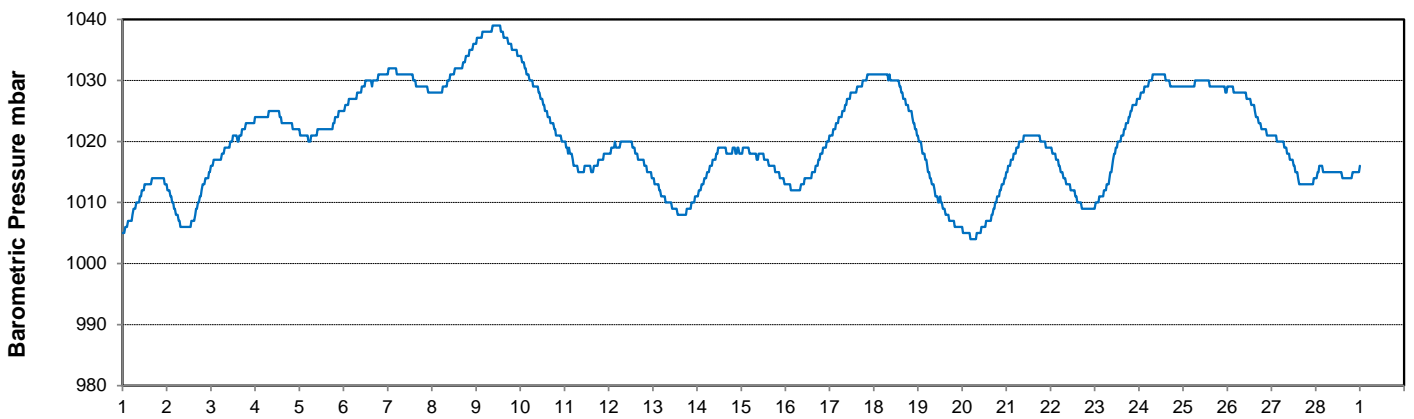
### Temperature and Precipitation for February 2019



### Relative Humidity for February 2019



### Barometric Pressure Corrected to Sea Level for February 2019





# SRC CLIMATE REFERENCE STATION DAILY DATA REPORT

## SASKATOON STATION 4057180

52°09' N 106°36' W 497 m asl Estab. 1963

Preliminary **FEBRUARY 2019**

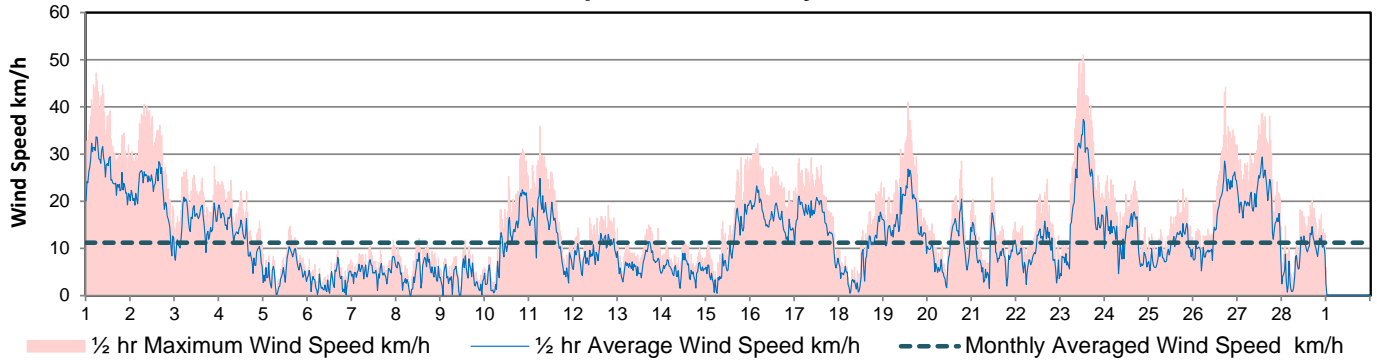
Day	Wind Gust			Soil Temperatures at 0900hrs								Radiation				
	Max	Direction	Time	Surface	5 cm	10 cm	20 cm	50 cm	100 cm	150 cm	300 cm	Bright Sunshine	Possible	% Possible	Global	Diffuse
	km/h			°C	°C	°C	°C	°C	°C	°C	°C	hours	hours		MJ/m <sup>2</sup>	MJ/m <sup>2</sup>
1	47.2	NNE	5:17	-16.5	-8.5	-8.0	-8.0	-5.0	0.0	1.5	4.5	0.0	9.1	0.0	2.7	2.3
2	40.6	E	7:19	-19.5	-8.0	-7.5	-7.5	-4.5	0.0	1.5	4.5	0.1	9.2	1.1	3.9	3.1
3	27.4	NE	21:21	-24.0	-8.0	-7.5	-7.0	-4.5	-0.5	1.5	4.0	0.0	9.2	0.0	3.6	3.0
4	24.4	NE	6:16	-24.5	-7.5	-7.0	-7.0	-4.0	-0.5	1.5	4.0	0.0	9.3	0.0	4.3	3.5
5	14.7	NNE	14:00	-32.0	-7.5	-7.0	-6.5	-4.0	-0.5	1.5	4.0	7.0	9.4	74.9	8.4	1.9
6	9.7	NE	16:14	-37.5	-7.5	-7.0	-6.5	-4.0	-0.5	1.5	4.0	8.0	9.4	85.0	8.8	2.6
7	11.8	SSW	22:18	-35.5	-7.5	-7.0	-6.5	-4.0	-0.5	1.0	4.0	8.4	9.5	88.7	7.5	2.0
8	12.2	SE	12:07	-37.0	-7.5	-7.5	-7.0	-4.0	-0.5	1.0	4.0	8.4	9.5	88.1	7.8	1.8
9	11.8	N	13:08	-33.5	-8.0	-7.5	-7.0	-4.0	-0.5	1.0	4.0	9.1	9.6	94.8	9.8	1.8
10	31.2	SE	20:15	-30.0	-8.0	-7.5	-7.0	-4.0	-0.5	1.0	4.0	7.3	9.7	75.6	7.5	2.5
11	35.9	SE	5:51	-21.5	-8.0	-7.5	-7.0	-4.0	-0.5	1.0	4.0	0.0	9.7	0.0	4.2	3.4
12	19.1	SW	16:49	-30.5	-7.5	-7.0	-7.0	-4.0	-0.5	1.0	4.0	5.8	9.8	59.3	7.3	3.1
13	15.0	WNW	18:40	-30.0	-7.5	-7.0	-7.0	-4.0	-0.5	1.0	4.0	8.9	9.9	90.4	8.7	2.1
14	11.3	W	2:07	-30.5	-7.5	-7.0	-7.0	-4.0	-0.5	1.0	3.5	8.8	9.9	88.8	9.2	2.7
15	29.3	ESE	22:06	-29.0	-8.0	-7.5	-7.0	-4.0	-0.5	1.0	3.5	8.6	10.0	86.3	9.3	3.3
16	32.2	SE	3:36	-16.5	-8.0	-7.5	-7.0	-4.5	-0.5	1.0	3.5	0.0	10.0	0.0	5.6	4.5
17	29.2	NE	8:56	-15.5	-7.5	-7.0	-7.0	-4.5	-0.5	1.0	3.5	0.1	10.1	1.0	6.9	5.3
18	24.0	SW	22:33	-21.5	-7.0	-6.5	-6.5	-4.0	-0.5	1.0	3.5	9.5	10.2	93.4	11.0	1.8
19	41.0	SW	13:20	-25.0	-6.5	-6.5	-6.0	-4.0	-0.5	1.0	3.5	9.8	10.2	95.8	10.4	2.3
20	28.4	NE	18:08	-20.0	-6.5	-6.5	-6.0	-4.0	-0.5	1.0	3.5	4.8	10.3	46.6	7.8	4.8
21	25.0	N	10:44	-14.5	-6.5	-6.0	-6.0	-4.0	-0.5	1.0	3.5	7.3	10.4	70.5	9.9	3.0
22	24.7	SSE	16:34	-23.0	-6.0	-6.0	-5.5	-3.5	-0.5	1.0	3.5	9.7	10.4	93.0	10.9	2.2
23	51.0	N	12:24	-15.0	-6.0	-6.0	-5.5	-3.5	-0.5	0.5	3.5	3.1	10.5	29.6	8.4	5.6
24	25.4	NW	1:03	-24.0	-6.0	-5.5	-5.5	-3.5	-0.5	0.5	3.5	10.3	10.6	97.5	13.0	2.0
25	22.7	WSW	18:11	-27.0	-6.5	-6.0	-5.5	-3.5	-0.5	0.5	3.5	10.2	10.6	96.0	11.2	2.1
26	44.2	WSW	17:20	-25.5	-6.5	-6.5	-6.0	-3.5	-0.5	0.5	3.0	9.6	10.7	89.8	10.6	2.3
27	38.7	W	13:14	-14.0	-7.0	-6.5	-6.0	-3.5	-0.5	0.5	3.0	5.2	10.8	48.3	9.6	5.5
28	20.3	SE	16:20	-11.5	-6.5	-6.0	-6.0	-3.5	-0.5	0.5	3.0	1.7	10.8	15.7	8.9	6.6
Total												161.7	278.7	58.0	227.2	87.1
Mean				-24.4	-7.3	-6.9	-6.6	-4.0	-0.5	1.0	3.7	1981-2010 Normal for Radiation				
Extreme	51.0	N	12:24	1971- 2000 Normal for Soil Temperatures								132.6	281.1	47.2	213.0	104.0
Date	23			-7.0	-6.7	-6.1	-3.5	-0.8	0.8	3.4	No. of Bright Sunshine days = 23					

Note: Red numbers indicate manual calculation; Red cell indicate data not available

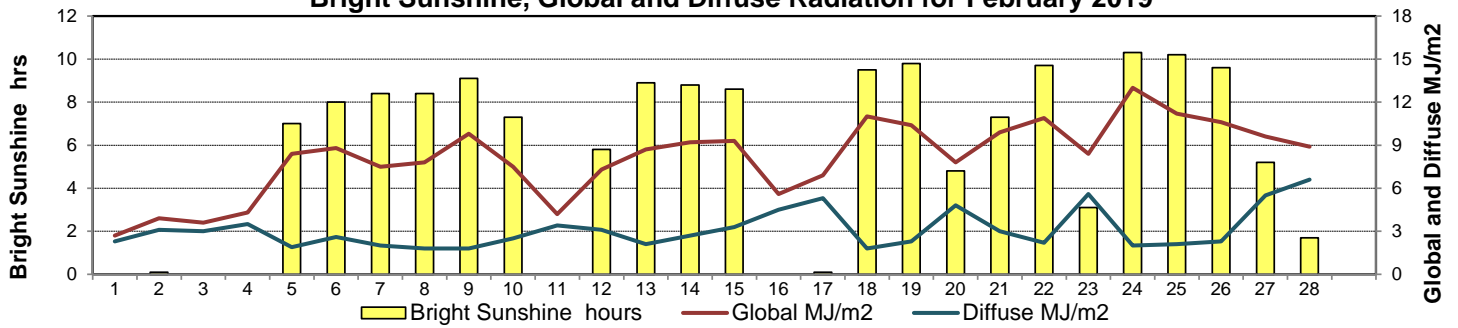
**SRC proudly recognizes the following CRS supporters:**



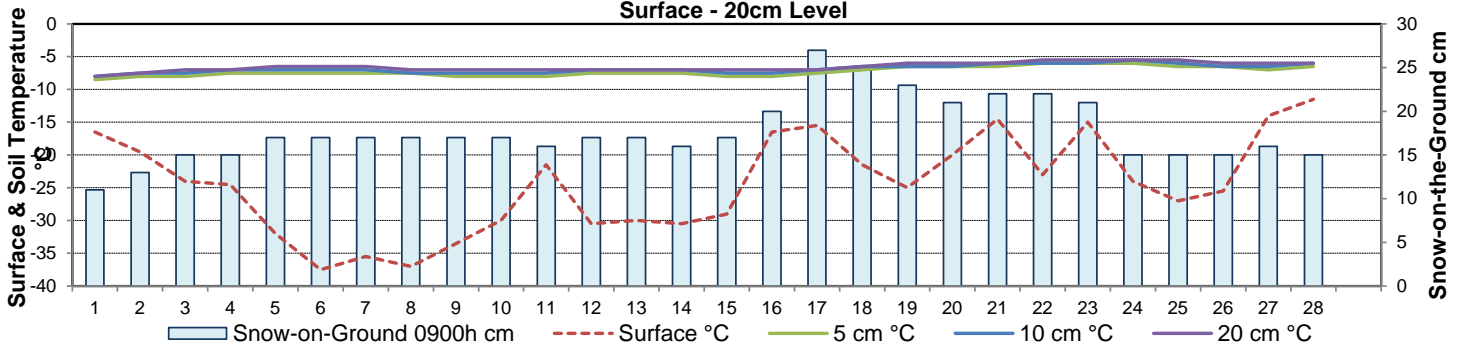
**Wind Speed for February 2019**



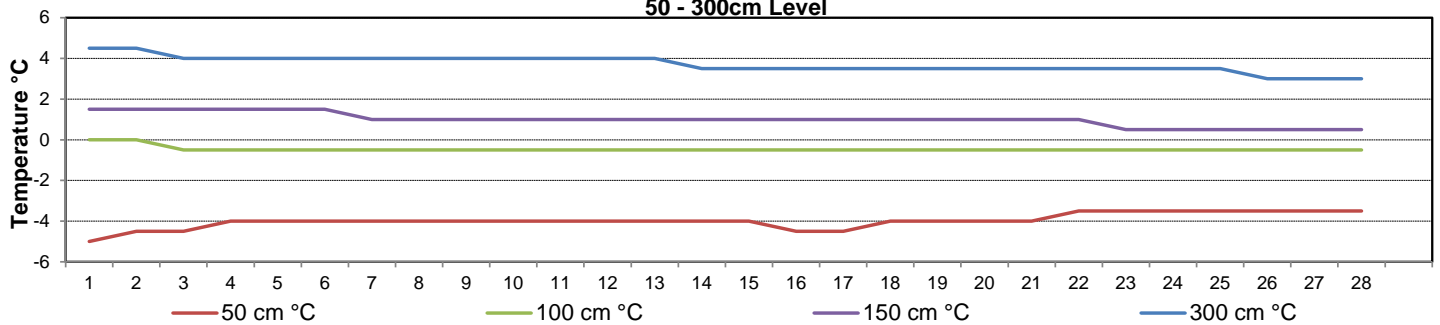
**Bright Sunshine, Global and Diffuse Radiation for February 2019**



**Soil Temperatures for February 2019  
Surface - 20cm Level**



**Soil Temperatures for February 2019  
50 - 300cm Level**





**SRC CLIMATE REFERENCE STATION DAILY DATA REPORT**

**SASKATOON STATION 4057180**

52°09' N 106°36' W 497 m asl Estab. 1963

Preliminary **FEBRUARY 2019**

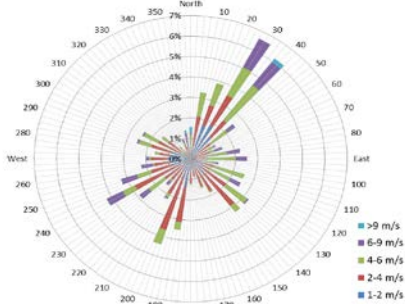
**Extreme Records for February**

Max/Min Temperature °C					Precipitation - Monthly mm					Wind Monthly km/h				CRS Bright Sunshine - Monthly			
S'toon Area	Date	Site	S'toon CRS	Date	S'toon Area	Date	Site	S'toon CRS	Date	S'toon Airport	Date	S'toon CRS**	Date	Hours	Year	No. of Days	Year
12.8	19/1931	SE	9.0	16/2017	43.7	1924	SE	40.2	1979	106 <sup>N</sup>	22/1988	82.3 <sup>NNW</sup>	10/2004	190.8	2018	28	1978&84
-50.0	01/1893	SM	-41.1	06/1972	0.0	multiply sites		1.9	2012					57.6	1983	17	1983&98

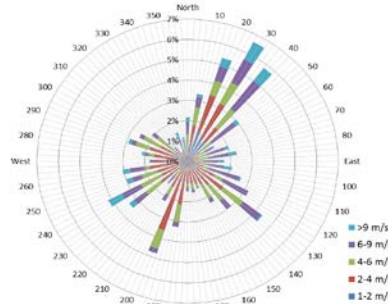
\*\*1975 forward \* more than one year

Notable Events for CRS Saskatoon - February						Saskatoon Area Stations			Glossary	
Element	Type	Day	New Record	Old Record	Year	Station	Location	Period	Term	Definition
Maximum Daily Temperature	No. of days <= -10°		27	27	1979	SM	NWMP	c. 1892-1901	T	Trace of precipitation
Minimum Daily Temperature	No. of days <= -30°		10	10	1972	SE	Eby	1901-1941	Normal	30 year average beginning with the decade
						US	Univ. of Sask.	1915-1964	SOG	Depth of snow-on-the-ground in cm
						S	Saskatoon	1941-1942	na	not available
						SA	Saskatoon A	1942 -	<b>Degree-days</b>	
						NRC	Nat. Res. Council	1952-1966	Tm	Mean Temperature
						SRC	Sask. Res. Council	1963-	Growing	(Tm-5°C); if Tm ≤ 5°C then GDD = 0
						SWT	S'toon Water Treatment Plant	1974 -	Heating	(18°C-Tm); if Tm ≤ 18°C then HDD = 0
						SC	S'toon Central Ave	1974-1989	Cooling	(Tm-18°C); if Tm ≥ 18°C then CDD = 0
						S1	Saskatoon 1	1976-1978	Extreme Cooling	(Tm-24°C); if Tm ≥ 24°C then CDD = 0
						S2	Saskatoon 2	1977-1990	Manual Snow Depths (average of 3 meter sticks located inside climate station compound)	
						K	S'toon Kernen Farm	1993-2004	Feb 7 = 20 cm	
						KCS	S'toon Kernen Farm CS	1996-	Feb 13 = 18 cm	
						RCS	Environment Canada	2008-	Feb 19 = 26 cm	
						SF	Sutherland Forestry	1943-1970	Feb 26 = 21 cm	

10 minute Average Wind Speed and Direction Saskatoon Feb 2019



1/2 hr Maximum Wind Speed and Direction Saskatoon Feb 2019



**SRC proudly recognizes the following CRS supporters:**



Agriculture and Agri-Food Canada / Agriculture et Agroalimentaire Canada

