



SRC CLIMATE REFERENCE STATION DAILY DATA REPORT

CONSERVATION LEARNING CENTRE

Saskatchewan 53.03°N 105.77°W 451m asl Estab. 2011

Preliminary **November 2022**

Day	Temperature						Degree-days			Precipitation			Relative Humidity		Station Pressure <i>corrected to sea level</i>	
	Max	Avg Max	Min	Avg Min	Mean	Avg Mean	Growing	Heating	Cooling	Weighing Gauge	Notes	Snow-on-Ground 0900h	Max ½ hr Avg	Min ½ hr Avg	Max ½ hr Avg	Min ½ hr Avg
	°C	2012-2021	°C	2012-2021	°C	2012-2021	5°C base	18°C base	18°C base	mm		cm	%	%	mbar	mbar
1	0.6	3.0	-4.1	-4.9	-1.8	-1.0	0.0	19.8	0.0	4.6		0	97	76	1009	1005
2	-0.7	3.0	-3.6	-4.5	-2.2	-0.7	0.0	20.2	0.0	2.1		0	98	95	1007	1004
3	-3.3	3.0	-7.8	-4.6	-5.6	-0.8	0.0	23.6	0.0	2.4		3	98	82	1013	1007
4	-1.2	3.0	-9.8	-5.5	-5.5	-1.3	0.0	23.5	0.0	2.8		2	98	86	1009	993
5	-1.2	2.4	-10.2	-6.9	-5.7	-2.2	0.0	23.7	0.0	11.1		10	100	94	996	983
6	-4.1	-0.2	-13.0	-8.0	-8.6	-4.1	0.0	26.6	0.0	0.8		2	92	77	1027	996
7	-10.3	0.4	-19.0	-8.2	-14.7	-3.9	0.0	32.7	0.0	1.5		2	94	84	1033	1025
8	-9.6	-1.3	-17.3	-9.8	-13.5	-5.6	0.0	31.5	0.0	1.1		8	94	84	1025	1021
9	-10.6	-3.0	-17.9	-12.8	-14.3	-7.9	0.0	32.3	0.0	0.0		7	91	76	1027	1022
10	-15.2	-5.3	-24.4	-13.1	-19.8	-9.2	0.0	37.8	0.0	0.2		6	92	81	1028	1025
11	-12.7	-4.4	-23.7	-14.5	-18.2	-9.5	0.0	36.2	0.0	0.0		7	91	77	1025	1022
12	-10.3	-4.1	-23.6	-13.1	-17.0	-8.6	0.0	35.0	0.0	0.2		7	90	84	1023	1019
13	-8.3	-1.3	-10.4	-11.7	-9.4	-6.5	0.0	27.4	0.0	0.2		7	96	88	1021	1019
14	-6.9	0.0	-11.1	-9.4	-9.0	-4.7	0.0	27.0	0.0	0.9		7	96	91	1027	1019
15	-2.0	-1.7	-10.0	-9.3	-6.0	-5.5	0.0	24.0	0.0	0.2		7	95	88	1027	1024
16	-1.8	-3.4	-10.3	-10.0	-6.1	-6.7	0.0	24.1	0.0	0.0		8	92	73	1028	1023
17	-10.3	-4.8	-16.1	-12.8	-13.2	-8.9	0.0	31.2	0.0	0.0		7	85	67	1035	1022
18	-4.9	-5.4	-13.4	-13.5	-9.2	-9.5	0.0	27.2	0.0	0.0		7	90	55	1021	1012
19	-5.1	-5.9	-12.6	-14.9	-8.9	-10.4	0.0	26.9	0.0	0.0		7	89	63	1021	1006
20	-0.5	-5.8	-12.6	-15.4	-6.6	-10.6	0.0	24.6	0.0	0.0		7	79	55	1016	1007
21	-1.8	-5.6	-17.5	-15.6	-9.7	-10.7	0.0	27.7	0.0	0.8		7	96	79	1018	1008
22	0.8	-4.3	-8.8	-14.6	-4.0	-9.5	0.0	22.0	0.0	0.0		10	97	76	1009	1000
23	3.4	-2.6	-8.9	-14.1	-2.8	-8.4	0.0	20.8	0.0	0.0		8	97	76	1016	1000
24	1.2	-3.6	-10.8	-10.8	-4.8	-7.2	0.0	22.8	0.0	0.0		8	97	77	1017	1008
25	4.6	-5.2	-1.2	-14.1	1.7	-9.7	0.0	16.3	0.0	0.0		9	89	70	1008	1000
26	1.7	-6.1	-9.2	-15.7	-3.8	-10.9	0.0	21.8	0.0	0.0		9	94	68	1009	1004
27	-3.4	-3.8	-7.5	-12.3	-5.5	-8.1	0.0	23.5	0.0	0.2		9	95	90	1004	993
28	-5.4	-6.6	-8.3	-13.2	-6.9	-9.9	0.0	24.9	0.0	0.8		9	91	81	1004	994
29	-7.8	-5.9	-16.8	-12.7	-12.3	-9.3	0.0	30.3	0.0	0.7		12	91	76	1020	1004
30	-16.8	-6.4	-22.1	-13.4	-19.5	-10.0	0.0	37.5	0.0	1.2		12	84	77	1023	1014
Total							0.0	802.9	0.0	31.8						
Avg	-4.7	-2.7	-12.7	-11.3	-8.8	-7.1	<i>Monthly 2012 - 2021 Average</i>			24.7	<i>2012-2021 Average</i>					
Extreme	4.6	18.4	-24.4	-33.6			2.2	740.4	0	394.4	<i>2022 Cumulative ppt</i>		100	55	1035	983
Date	25	2016	10	2013						368.3	<i>Cumulative Average</i>		5	18	17	5

SRC proudly recognizes the following CRS supporters:

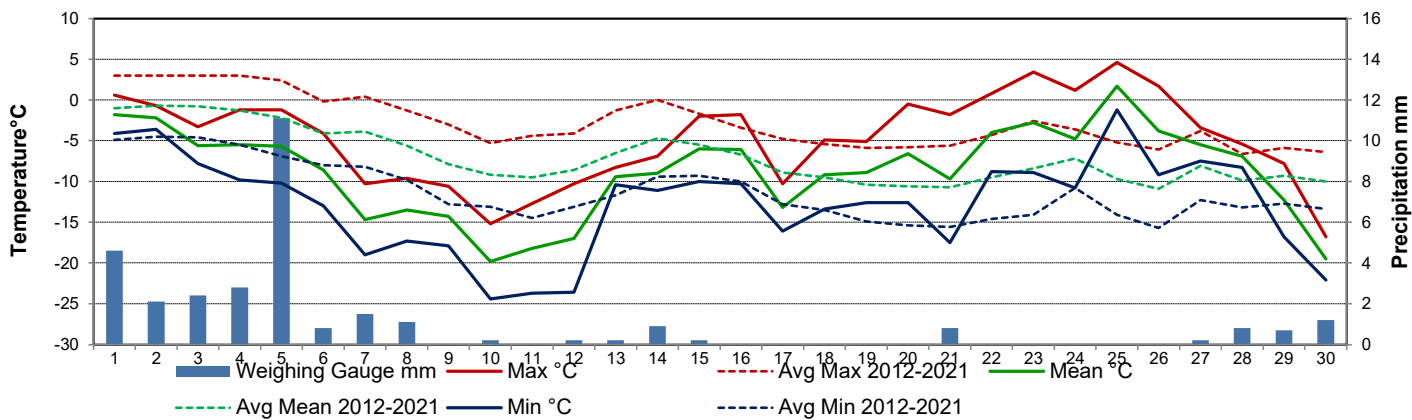


Agriculture and Agri-Food Canada

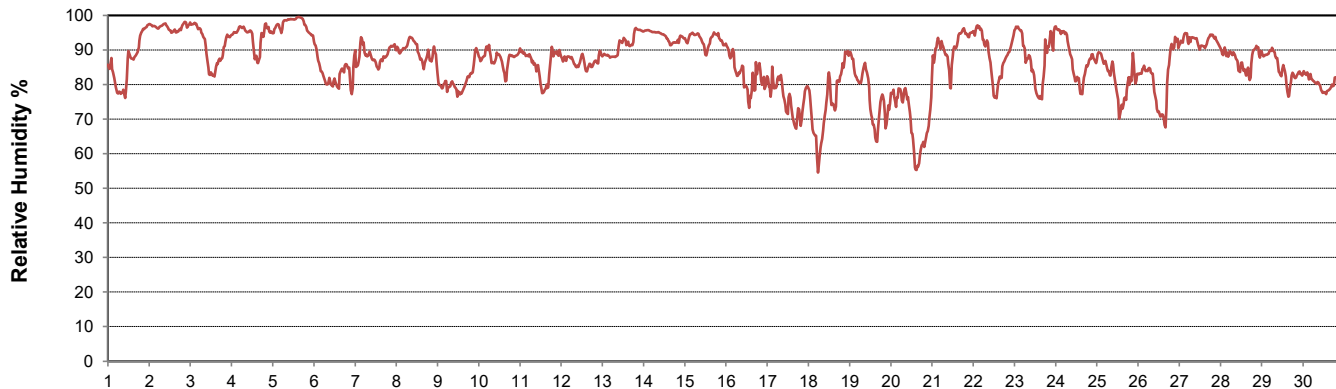
Agriculture et Agroalimentaire Canada



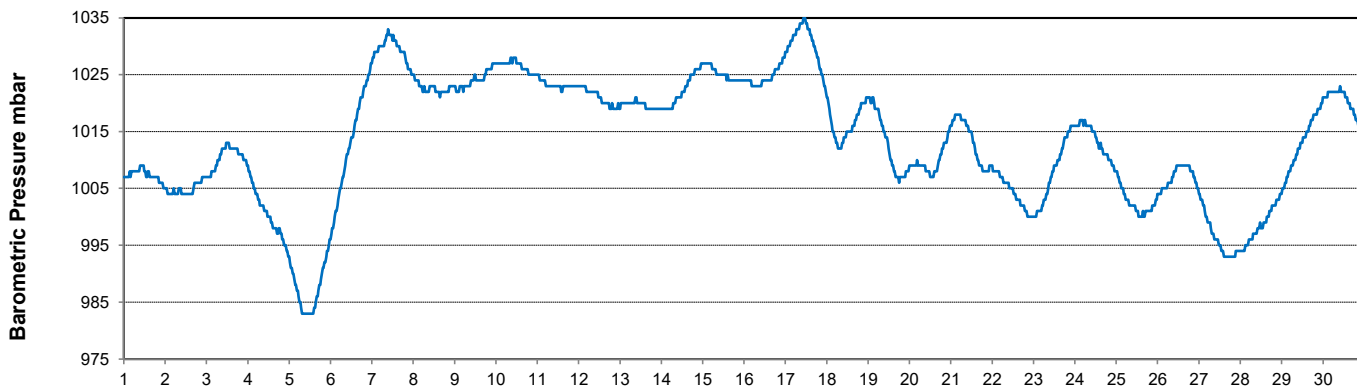
Temperature and Precipitation for November 2022



Relative Humidity for November 2022



Barometric Pressure Corrected to Sea Level for November 2022





SRC CLIMATE REFERENCE STATION DAILY DATA REPORT

CONSERVATION LEARNING CENTRE

Saskatchewan 53.03°N 105.77°W 451m asl Estab. 2011

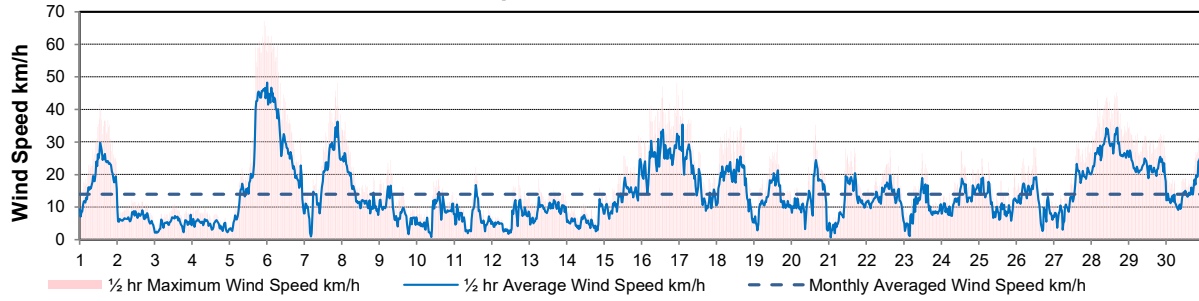
Preliminary **November 2022**

Day	Wind Gust (10 meter)			Wind Speed (10 meters)	Soil Temperatures at 0900hrs									Radiation				
	Max	Direction	Time	Daily Average	Surface	5 cm	10 cm	20 cm	50 cm	100 cm	150 cm	300 cm	Bright Sunshine	Possible	% Possible	Global	Diffuse	
	km/h			km/h	°C	°C	°C	°C	°C	°C	°C	°C	hours	hours		MJ/m ²	MJ/m ²	
1	41.6	E	13:09	19.0	0.0	2.0	2.5	4.0	5.5	7.5	8.5	8.5	0.0	9.5	0.0	1.7	1.7	
2	16.0	ENE	0:00	6.7	-3.0	2.0	2.5	3.5	5.0	7.0	8.5	8.0	0.0	9.4	0.0	1.5	1.5	
3	11.1	SSW	23:15	4.9	-6.0	2.0	2.5	3.5	5.0	7.0	8.5	8.0	3.8	9.4	40.5	3.8	2.8	
4	10.0	S	8:13	4.8	-5.5	2.0	2.0	3.5	5.0	7.0	8.0	8.0	3.7	9.3	39.7	4.8	2.9	
5	67.1	N	22:10	22.8	-2.5	1.5	2.0	3.0	5.0	7.0	8.0	8.0	0.0	9.3	0.0	2.2	2.1	
6	62.6	N	2:42	29.6	-7.0	1.0	1.5	3.0	5.0	6.5	8.0	8.0	0.0	9.2	0.0	3.4	3.2	
7	48.2	ENE	21:24	18.8	-15.5	0.0	1.0	2.5	4.5	6.5	8.0	8.0	0.0	9.1	0.0	3.9	3.7	
8	36.2	ENE	2:11	14.3	-7.5	0.0	0.5	2.0	4.0	6.5	7.5	8.0	1.1	9.1	12.1	3.5	3.2	
9	24.3	NW	7:24	8.8	-12.0	0.0	0.5	2.0	4.0	6.0	7.5	8.0	0.0	9.0	0.0	4.0	3.8	
10	18.7	SSW	14:02	7.6	-15.0	0.0	0.5	1.5	3.5	6.0	7.5	8.0	2.9	9.0	32.4	5.3	3.8	
11	22.2	SSE	13:52	6.7	-15.5	-0.5	0.0	1.5	3.5	6.0	7.5	8.0	7.6	8.9	85.4	6.8	2.4	
12	19.4	S	17:26	6.3	-17.0	-0.5	0.0	1.0	3.5	5.5	7.5	8.0	3.5	8.8	39.6	4.8	3.2	
13	18.6	S	6:22	9.0	-9.0	-0.5	-0.5	1.0	3.0	5.5	7.0	8.0	0.0	8.8	0.0	2.2	2.2	
14	15.9	S	21:08	5.8	-5.5	-0.5	0.0	1.0	3.0	5.5	7.0	8.0	0.0	8.7	0.0	2.7	2.4	
15	32.0	NW	22:28	13.7	-5.5	-0.5	0.0	1.0	2.5	5.0	7.0	8.0	0.0	8.7	0.0	3.2	3.1	
16	48.1	NNW	22:45	26.0	-4.0	-0.5	-0.5	0.5	2.5	5.0	6.5	7.5	0.3	8.6	3.5	3.2	3.0	
17	46.2	NNW	2:12	18.4	-16.0	-0.5	0.0	1.0	2.5	5.0	6.5	8.0	6.5	8.6	75.8	5.2	2.1	
18	35.0	NNW	15:15	17.9	-7.5	-1.0	-0.5	0.5	2.5	5.0	6.5	8.0	0.0	8.5	0.0	2.5	2.4	
19	29.3	SW	15:03	12.6	-6.5	-0.5	-0.5	0.5	2.5	4.5	6.5	7.5	5.6	8.5	66.2	4.7	1.8	
20	35.2	NW	15:25	12.7	-11.5	-1.0	-0.5	0.5	2.5	4.5	6.5	8.0	5.2	8.4	61.8	4.6	2.3	
21	28.1	SW	16:29	10.9	-11.5	-1.0	-0.5	0.5	2.5	4.5	6.5	8.0	0.0	8.4	0.0	2.5	2.4	
22	27.5	SW	15:20	13.5	-8.0	-1.0	-0.5	0.5	2.0	4.5	6.0	7.5	3.5	8.3	42.1	4.2	2.5	
23	26.4	NW	11:46	9.7	-2.5	-0.5	-0.5	0.5	1.5	4.5	6.0	7.5	5.8	8.3	70.1	4.4	1.9	
24	27.4	SSW	12:54	12.8	-5.0	-0.5	-0.5	0.5	2.0	4.0	6.0	7.5	0.9	8.2	10.9	3.2	2.9	
25	24.9	SSW	2:34	11.1	-1.5	-0.5	-0.5	0.5	2.0	4.0	6.0	7.5	4.5	8.2	55.0	3.3	2.3	
26	28.3	WNV	11:40	12.2	-4.0	-0.5	0.0	0.5	1.5	4.0	6.0	7.5	4.9	8.1	60.3	3.4	1.8	
27	29.8	E	16:15	14.0	-5.5	-0.5	-0.5	0.5	2.0	4.0	5.5	7.5	0.1	8.1	1.2	2.6	2.4	
28	45.1	N	16:15	28.1	-7.5	-0.5	-0.5	0.5	1.5	4.0	5.5	7.5	0.0	8.1	0.0	3.0	2.9	
29	34.7	N	0:37	22.5	-10.5	-0.5	-0.5	0.5	1.5	4.0	5.5	7.5	1.9	8.0	23.7	3.4	2.9	
30	32.1	ENE	22:17	15.1	-19.5	-1.0	-0.5	0.5	2.0	4.0	5.5	7.5	0.2	8.0	2.5	2.8	2.6	
Total													62.0	260.41	23.8	106.8	78.2	
Mean				13.9	-8.3	-0.1	0.3	1.4	3.1	5.3	6.9	7.8						
Extreme	67.1	N	22:10															
Date	5																	

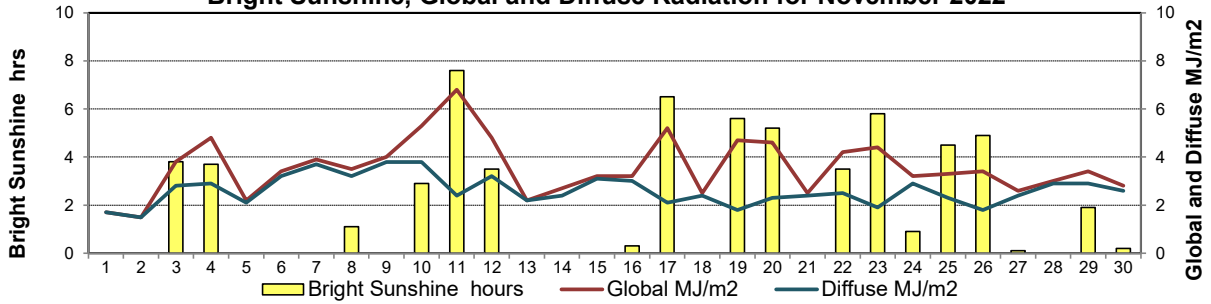
GLOSSARY OF TERMS

Degree-days	Radiation
T_m Mean Temperature	Bright Sunshine is the unobstructed direct radiation from the sun, as opposed to the shading of a location by clouds or by other atmospheric obstructions.
Growing (T _m -5°C); if T _m ≤ 5°C then GDD = 0	
Heating (18°C-T _m); if T _m ≥ 18°C then HDD = 0	
Cooling (T _m -18°C); if T _m ≤ 18°C then CDD = 0	Diffuse is radiation reaching the earth's surface after having been scattered from the direct solar beam
T Trace of Precipitation	Global is the sum of the direct solar and diffuse radiation
SOG Depth of snow-on-the-ground	Relative Humidity The ratio of the air's water vapour content to its water vapour capacity which changes with temperature.
Red Cell no data available	Air Pressure The force exerted by the weight of a column of air above a given point
Red Number manual calculation	Wind Gust The daily highest instantaneous value recorded irrespective of direction and/or duration

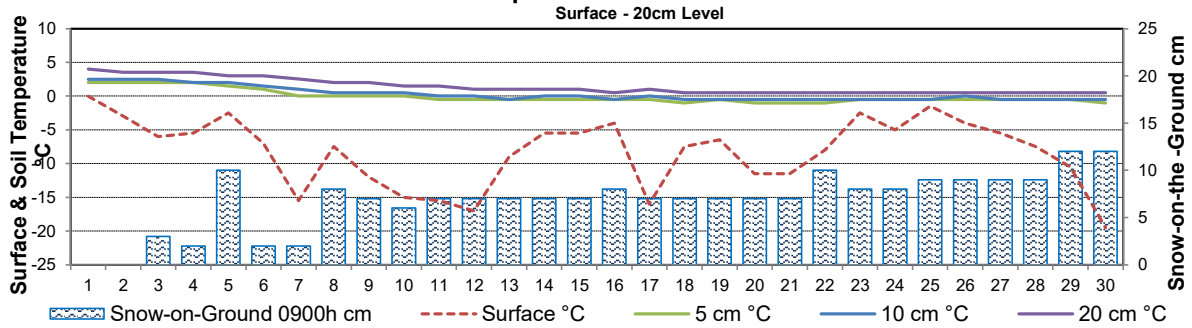
Wind Speed for November 2022



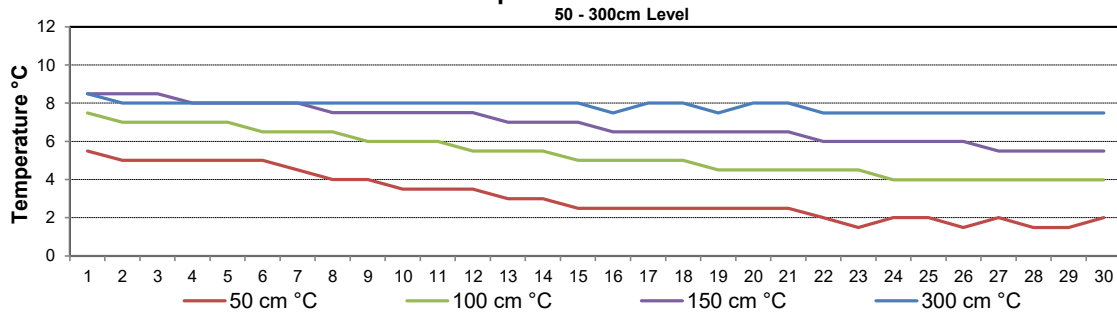
Bright Sunshine, Global and Diffuse Radiation for November 2022



Soil Temperatures for November 2022



Soil Temperatures for November 2022





SRC CLIMATE REFERENCE STATION DAILY DATA REPORT CONSERVATION LEARNING CENTRE

Saskatchewan 53.03°N 105.77°W 451m asl Estab. 2011

Preliminary **November 2022**

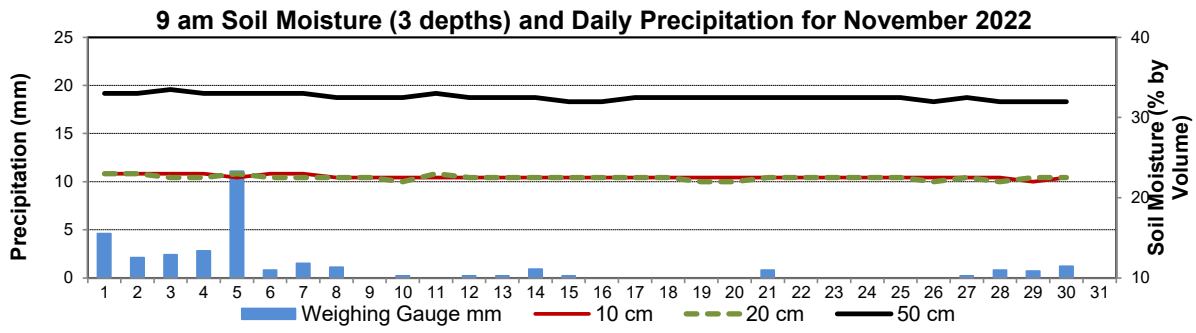
Day	2 meter Wind Speed			Soil Moisture at 0900 hrs (rounded to the 0.5%)															
	Daily Average	Max ½ hr Avg	½ hr Extreme Max	10 cm	20 cm	50 cm													
	km/h	km/h	km/h	% by volume (soil type is Clay Loam)															
1	15.0	22.7	34.6	23.0	23.0	33.0													
2	12.0	15.8	22.0	23.0	23.0	33.0													
3	9.0	13.4	20.0	23.0	22.5	33.5													
4	8.0	11.2	17.0	23.0	22.5	33.0													
5	22.0	35.5	49.4	22.5	23.0	33.0													
6	23.0	36.5	47.5	23.0	22.5	33.0													
7	14.0	29.0	38.7	23.0	22.5	33.0													
8	12.0	22.2	30.2	22.5	22.5	32.5													
9	7.0	13.4	19.5	22.5	22.5	32.5													
10	6.0	13.2	17.7	22.5	22.0	32.5													
11	4.0	13.5	19.1	22.5	23.0	33.0													
12	3.0	9.7	16.6	22.5	22.5	32.5													
13	8.0	11.1	16.0	22.5	22.5	32.5													
14	5.0	11.1	14.3	22.5	22.5	32.5													
15	12.0	19.5	26.4	22.5	22.5	32.0													
16	20.0	26.4	36.4	22.5	22.5	32.0													
17	15.0	28.0	37.5	22.5	22.5	32.5													
18	14.0	20.0	27.7	22.5	22.5	32.5													
19	10.0	18.3	25.6	22.5	22.0	32.5													
20	10.0	18.6	27.2	22.5	22.0	32.5													
21	9.0	17.8	24.1	22.5	22.5	32.5													
22	11.0	16.9	25.0	22.5	22.5	32.5													
23	8.0	15.1	18.5	22.5	22.5	32.5													
24	11.0	16.8	23.1	22.5	22.5	32.5													
25	9.0	16.2	21.4	22.5	22.5	32.5													
26	9.0	15.8	23.7	22.5	22.0	32.0													
27	11.0	19.1	24.3	22.5	22.5	32.5													
28	23.0	27.8	37.1	22.5	22.0	32.0													
29	19.0	22.2	28.7	22.0	22.5	32.0													
30	13.0	21.4	28.3	22.5	22.5	32.0													
Total																			
Mean				23	23	32.6													
Extreme	23.0	36.5	49.4	23	23	33.5													
Date	2.5	2.5	3	3.5	3.5	3.5													

SRC proudly recognizes the following CRS supporters:

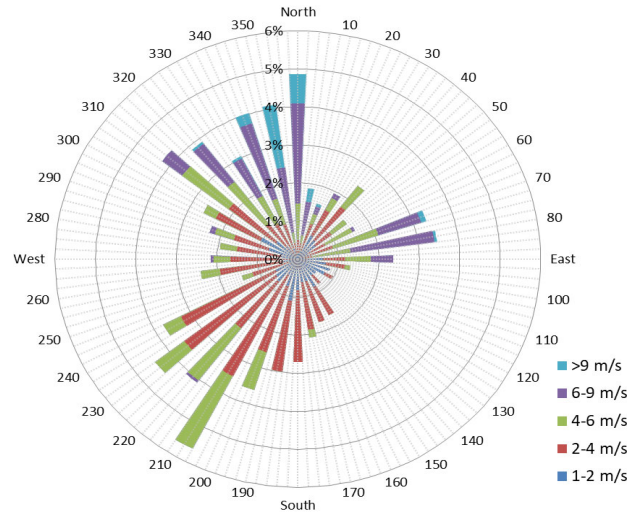


Agriculture and Agri-Food Canada / Agriculture et Agroalimentaire Canada





10 minute Average Wind Speed and Direction CLC November 2022



1/2 hr Maximum Wind Speed and Direction CLC November 2022

