



SRC CLIMATE REFERENCE STATION DAILY DATA REPORT

SASKATOON STATION 4057180

52°09' N 106°36' W 497 m asl Estab. 1963

Preliminary OCTOBER 2024

Day	Temperature						Degree-days			Precipitation			Relative Humidity		Station Pressure (sea level)	
	Max	Normal Max	Min	Normal Min	Mean	Normal Mean	Growing	Heating	Cooling	Geonor all-season ppt Gauge	Tipping Bucket	NOTES / Snow on-Ground 0900h	Max ½ hr Avg	Min ½ hr Avg	Max ½ hr Avg	Min ½ hr Avg
	°C	1991-2020	°C	1991-2020	°C	1991-2020	5°C base	18°C base	18°C base	mm	mm	cm	%	%	mbar	mbar
1	16.2	14.3	2.0	3.5	9.1	8.8	4.1	8.9	0.0	0.0	0.0	0	75	33	1019	1004
2	11.9	14.9	2.0	3.1	7.0	9.0	2.0	11.0	0.0	1.0	0.8	showers	90	39	1015	1004
3	10.7	12.8	1.1	1.5	5.9	7.2	0.9	12.1	0.0	0.0	0.0	0	82	40	1020	1015
4	17.7	13.2	1.0	1.4	9.4	7.3	4.4	8.6	0.0	0.0	0.0	0	84	33	1018	992
5	16.5	12.5	3.1	1.0	9.8	6.8	4.8	8.2	0.0	6.2	6.4	showers	87	39	1018	992
6	19.7	13.6	1.4	1.4	10.6	7.5	5.6	7.4	0.0	0.0	0.0	0	88	30	1019	1018
7	22.1	14.5	4.5	2.0	13.3	8.3	8.3	4.7	0.0	0.0	0.0	-	82	27	1018	1010
8	23.5	13.2	5.0	1.0	14.3	7.1	9.3	3.7	0.0	0.0	0.0	0	81	28	1010	1006
9	19.2	13.8	6.1	0.7	12.7	7.2	7.7	5.3	0.0	0.0	0.0	0	84	43	1011	1006
10	15.8	14.6	4.6	1.2	10.2	7.9	5.2	7.8	0.0	0.0	0.0	-	76	37	1023	1011
11	15.4	10.9	0.4	0.8	7.9	5.9	2.9	10.1	0.0	0.8	0.8	showers	89	35	1024	1017
12	11.7	10.3	0.6	-1.3	6.2	4.5	1.2	11.8	0.0	0.0	0.0	-	94	47	1027	1017
13	12.3	9.6	-2.2	-1.7	5.1	4.0	0.1	12.9	0.0	0.0	0.0	-	92	31	1028	1020
14	15.8	9.9	1.3	-0.4	8.6	4.8	3.6	9.4	0.0	0.0	0.0	0	73	27	1020	1015
15	16.4	10.3	5.0	-0.1	10.7	5.1	5.7	7.3	0.0	0.0	0.0	0	77	37	1015	1012
16	21.1	9.4	0.7	-0.5	10.9	4.4	5.9	7.1	0.0	0.0	0.0	0	91	35	1012	997
17	13.8	10.4	3.4	-0.8	8.6	4.8	3.6	9.4	0.0	0.0	0.0	0	84	29	1011	996
18	14.9	9.7	-1.2	-0.7	6.9	4.5	1.9	11.1	0.0	0.0	0.0	0	78	28	1019	1011
19	16.5	9.6	5.9	-1.4	11.2	4.1	6.2	6.8	0.0	0.0	0.0	-	51	30	1011	1004
20	14.6	8.3	7.4	-1.3	11.0	3.5	6.0	7.0	0.0	0.0	0.0	0	73	42	1013	1005
21	14.5	9.9	2.6	-1.2	8.6	4.4	3.6	9.4	0.0	0.0	0.0	-	77	49	1015	1001
22	2.7	8.0	-1.9	-2.4	0.4	2.8	0.0	17.6	0.0	0.0	0.0	0	86	66	1019	1015
23	11.3	8.9	-1.7	-2.1	4.8	3.4	0.0	13.2	0.0	0.0	0.0	0	92	35	1014	1011
24	12.0	9.7	1.5	-1.8	6.8	3.9	1.8	11.2	0.0	0.1	0.0	drizzle	77	26	1017	1011
25	10.7	8.2	-4.0	-2.1	3.4	3.0	0.0	14.6	0.0	0.0	0.0	0	75	28	1024	1017
26	11.9	7.5	-2.2	-3.1	4.9	2.2	0.0	13.1	0.0	0.0	0.0	0	68	28	1024	1013
27	12.8	6.3	0.9	-2.8	6.9	1.8	1.9	11.1	0.0	0.0	0.0	0	70	43	1013	995
28	11.3	4.7	-1.7	-3.0	4.8	0.8	0.0	13.2	0.0	0.0	0.0	0	84	50	1007	995
29	6.2	4.2	-4.3	-4.0	1.0	0.1	0.0	17.0	0.0	0.0	0.0	0	91	49	1016	1007
30	8.1	4.3	-6.0	-4.9	1.1	-0.3	0.0	16.9	0.0	0.0	0.0	0	88	56	1016	1013
31	11.9	4.1	-8.7	-4.7	1.6	-0.3	0.0	16.4	0.0	0.0	0.0	0	90	41	1014	1012
Total							96.7	324.3	0.0	8.1	7.9		Extreme / Date	Extreme / Date	Extreme / Date	Extreme / Date
Avg	14.2	10.1	0.9	-0.7	7.5	4.7	1991-2020 Normal			20.4	1991-2020 Normal					
Extreme Date	23.5		-8.7				61.7	413.6	0.2	370.9	Year to date 2024 Cumulative		94	26	1028	992
	8		31							328.6	Year to date Cumulative Normal		12	24	13	4

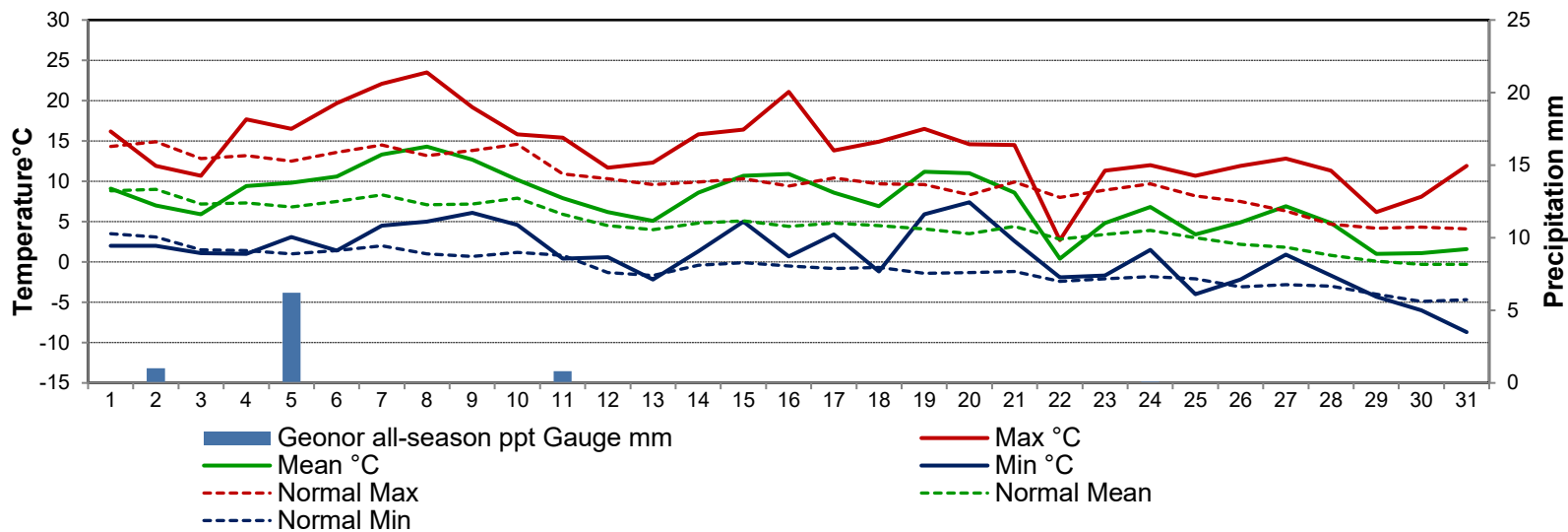
Note: Red numbers indicate manual calculation; Red cell indicate data not available

It has not been corrected for wind speed.

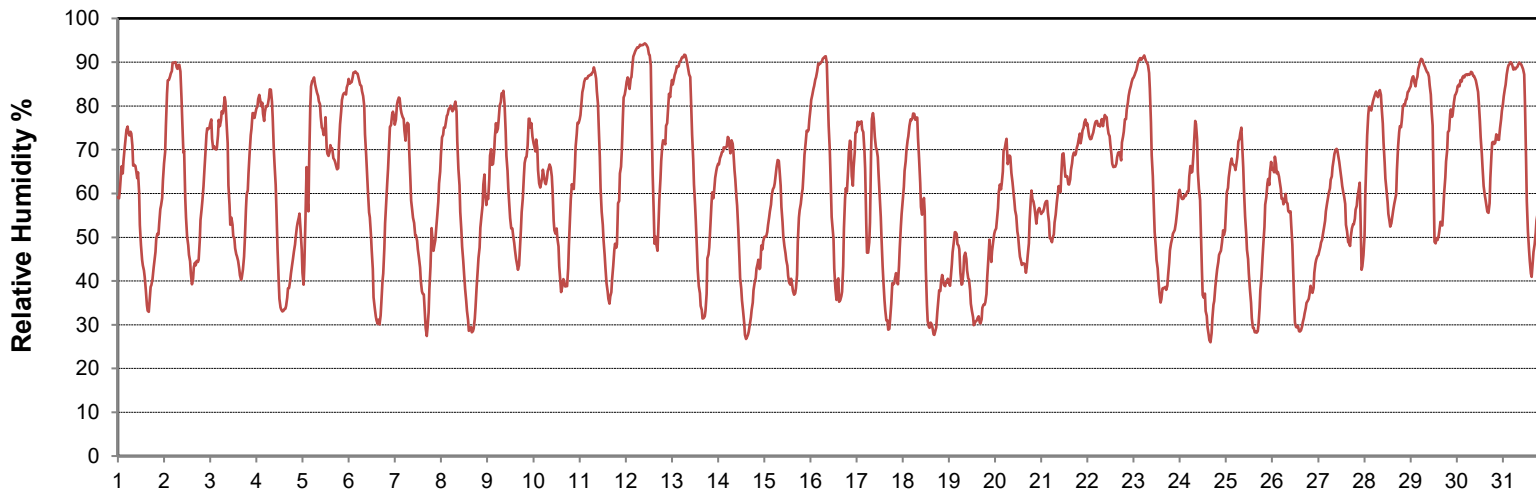
SRC proudly recognizes the following CRS supporters:



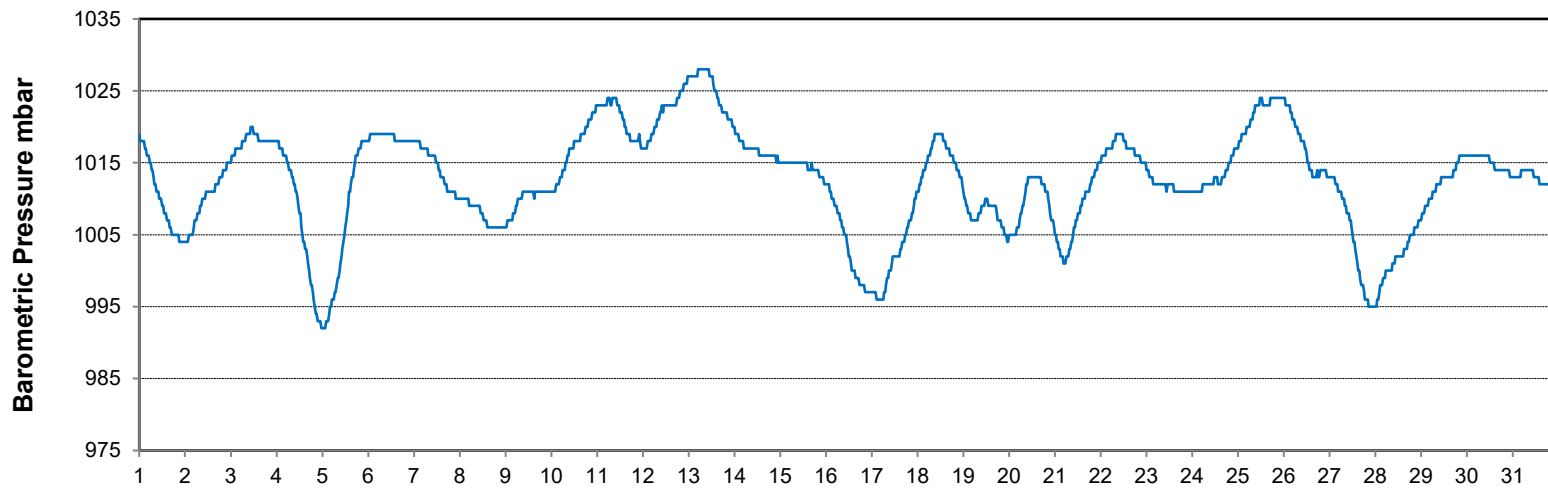
### Temperature and Precipitation for October 2024



### Relative Humidity for October 2024



### Barometric Pressure Corrected to Sea Level for October 2024





**SRC CLIMATE REFERENCE STATION DAILY DATA REPORT**

**SASKATOON STATION 4057180**

52°09' N 106°36' W 497 m asl Estab. 1963

Preliminary **OCTOBER 2024**

Day	Wind Gust (10 meters)			Wind Speed (10 meters)	Soil Temperatures at 0900hrs								Radiation				
	Max	Direction	Time	Daily Average	Surface	5 cm	10 cm	20 cm	50 cm	100 cm	150 cm	300 cm	Bright Sunshine	Possible	% Possible	Global	Diffuse
	km/h			km/h	°C	°C	°C	°C	°C	°C	°C	°C	hours	hours		MJ/m <sup>2</sup>	MJ/m <sup>2</sup>
1	31.5	W	16:26	11.9	4.5	7.5	8.5	10.5	13.0	13.0	13.0	11.5	3.3	11.6	28.5	8.2	6.0
2	49.0	NW	15:30	16.5	7.0	9.0	10.0	10.5	12.5	13.0	13.0	11.5	5.7	11.5	49.6	9.7	4.6
3	41.3	WNW	15:38	13.9	2.0	6.5	7.5	9.0	12.0	12.5	12.5	11.5	10.3	11.4	90.1	12.8	2.3
4	51.0	SE	14:19	17.6	4.0	5.0	6.0	7.5	11.0	12.5	12.5	11.5	8.3	11.4	73.1	11.1	4.3
5	71.5	NW	9:43	29.2	6.5	8.5	9.0	9.0	11.0	12.5	12.5	11.5	0.4	11.3	3.5	2.3	2.1
6	27.6	NW	15:01	10.2	4.5	5.0	6.5	7.5	10.5	12.0	12.5	11.5	10.0	11.2	89.0	11.6	2.8
7	33.3	ESE	8:51	13.5	9.5	6.0	7.0	8.5	10.5	12.0	12.5	11.5	7.9	11.2	70.8	9.5	5.0
8	21.2	S	16:17	8.0	7.5	6.5	7.5	9.0	10.5	11.5	12.0	11.5	10.3	11.1	92.8	11.8	1.4
9	21.0	NNE	11:37	7.3	6.5	7.5	8.5	9.5	10.5	11.5	12.0	11.5	8.7	11.0	78.9	10.5	3.0
10	31.4	WNW	13:29	11.5	8.5	9.0	9.5	10.0	10.5	11.5	12.0	11.0	7.7	11.0	70.2	10.2	3.1
11	29.0	NNE	21:14	7.5	2.0	5.5	7.0	9.0	11.0	11.5	12.0	11.0	8.0	10.9	73.4	9.8	3.8
12	39.8	NW	14:53	11.1	3.5	6.5	8.0	9.0	10.5	11.5	12.0	11.0	4.8	10.8	44.3	7.2	3.0
13	28.0	SE	16:50	10.3	0.0	3.5	5.0	6.0	10.0	11.5	12.0	11.0	8.1	10.8	75.2	9.7	3.0
14	55.2	SE	15:24	24.1	3.0	4.0	5.0	6.5	9.5	11.0	11.5	11.0	10.0	10.7	93.5	10.1	2.9
15	44.3	SSE	0:39	12.1	6.0	5.5	6.5	7.0	9.0	11.0	11.5	11.0	9.0	10.6	84.6	8.4	3.6
16	24.6	WSW	21:50	6.5	3.0	5.0	6.0	7.5	9.0	11.0	11.5	11.0	5.5	10.6	52.0	7.1	5.2
17	51.7	WNW	13:48	19.5	7.5	8.0	8.0	8.5	9.5	10.5	11.5	11.0	5.0	10.5	47.6	6.5	3.8
18	29.4	SSW	16:18	11.8	1.0	4.0	5.5	7.5	9.5	10.5	11.5	11.0	8.1	10.4	77.6	8.2	2.6
19	36.9	SSW	0:47	16.6	6.0	5.0	6.0	7.0	9.0	10.5	11.5	11.0	7.3	10.4	70.3	8.2	2.9
20	44.9	SE	23:55	15.6	8.0	6.5	7.5	8.0	9.0	10.5	11.0	11.0	8.8	10.3	85.4	7.1	3.9
21	49.7	SE	0:00	22.7	10.5	8.0	8.5	8.5	9.0	10.5	11.0	11.0	0.4	10.3	3.9	3.9	3.7
22	36.1	W	14:35	17.0	-1.0	5.5	6.5	8.0	9.5	10.5	11.0	11.0	0.0	10.2	0.0	2.2	2.2
23	34.9	SW	3:11	15.8	-1.0	3.0	4.0	5.5	9.0	10.5	11.0	11.0	5.5	10.1	54.3	7.5	2.0
24	58.0	WNW	16:24	18.2	3.5	4.5	5.0	6.0	8.5	10.0	11.0	11.0	5.4	10.1	53.7	6.7	2.8
25	37.6	W	15:36	10.9	-3.0	2.0	3.5	5.5	8.0	10.0	11.0	10.5	9.5	10.0	95.1	8.7	1.3
26	48.3	SE	12:31	20.5	1.5	1.5	2.5	4.0	7.5	10.0	10.5	10.5	4.3	9.9	43.3	6.2	3.4
27	46.1	SE	16:31	24.0	1.0	3.0	4.0	5.0	7.5	10.0	10.5	10.5	2.6	9.9	26.4	4.6	3.4
28	33.7	W	2:43	16.2	1.5	4.0	5.0	5.5	7.5	9.5	10.5	10.5	9.1	9.8	92.9	7.9	1.3
29	38.2	WNW	12:48	9.9	-1.5	2.0	3.5	4.5	7.5	9.5	10.5	10.5	2.0	9.7	20.5	4.5	3.2
30	18.9	S	8:26	9.2	-3.5	0.0	1.5	3.5	7.0	9.5	10.5	10.5	3.7	9.7	38.2	4.7	3.6
31	33.2	ESE	15:26	11.0	-6.5	-0.5	1.0	3.0	6.5	9.0	10.0	10.5	7.2	9.6	74.8	6.8	2.0
Total													196.9	327.9	60.0	243.7	98.2
Mean				14.5	3.3	5.1	6.1	7.3	9.5	11.0	11.5	11.0	1991-2020 Normal				
Extreme	71.5	NW	9:43		1971- 2000 Normal for Soil Temperatures								158.7	329.0	48.2	226.5	92.8
Date	5				4.3	4.7	6.2	8.3	9.2	9.6	9.4	No. of Bright Sunshine days = 30					

Note: Red numbers indicate manual calculation; Red cell indicate data not available

**SRC proudly recognizes the following CRS supporters:**

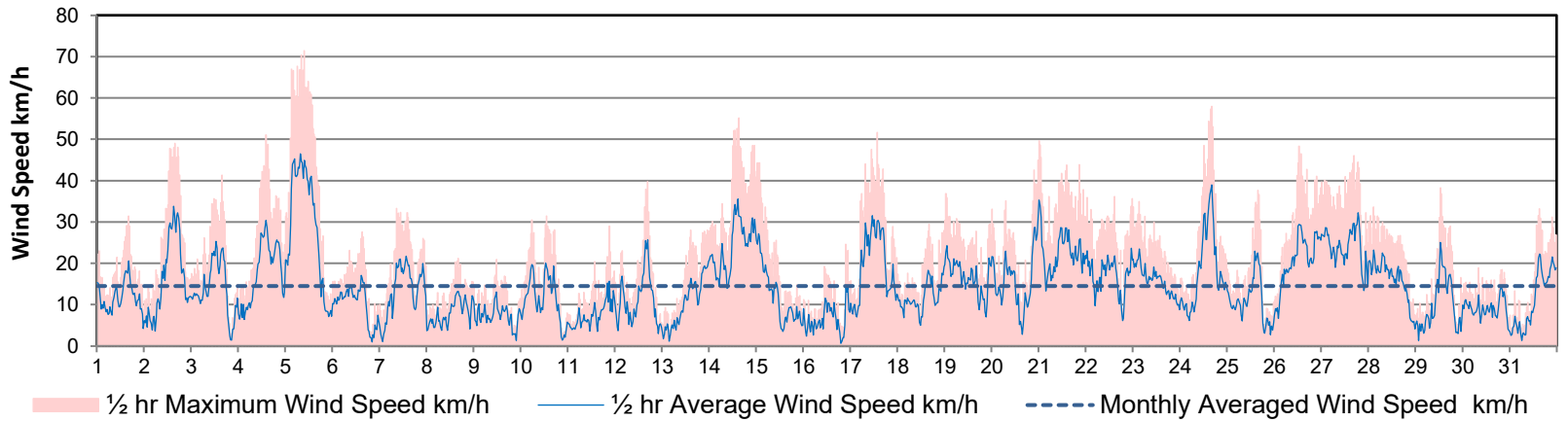


Agriculture and Agri-Food Canada

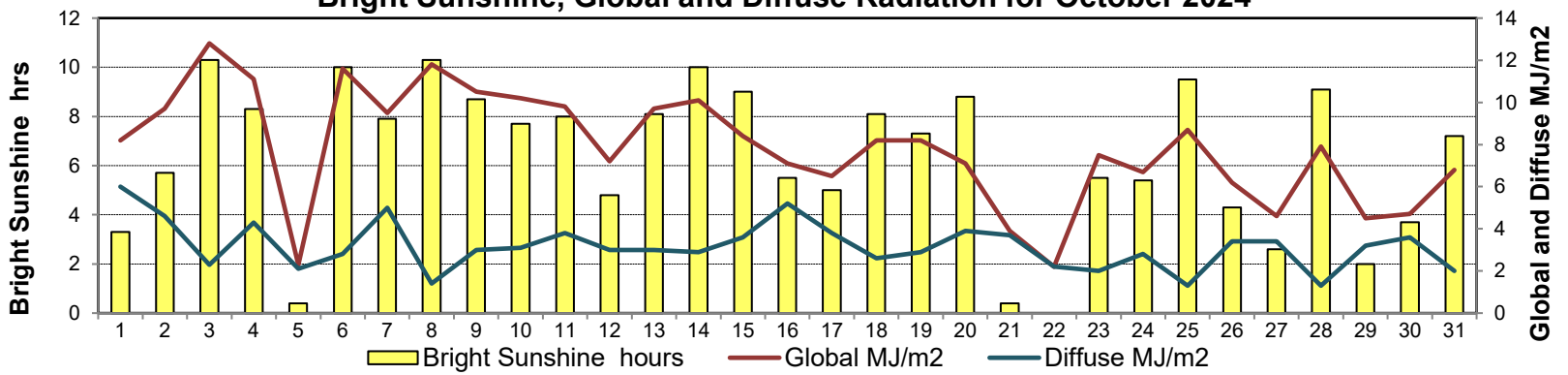
Agriculture et Agroalimentaire Canada



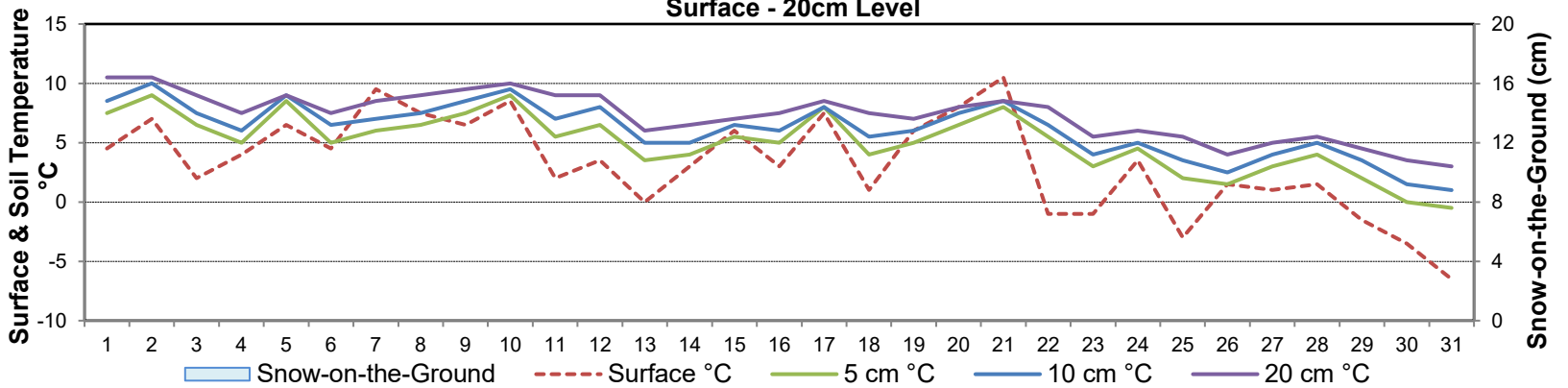
**Wind Speed for October 2024**



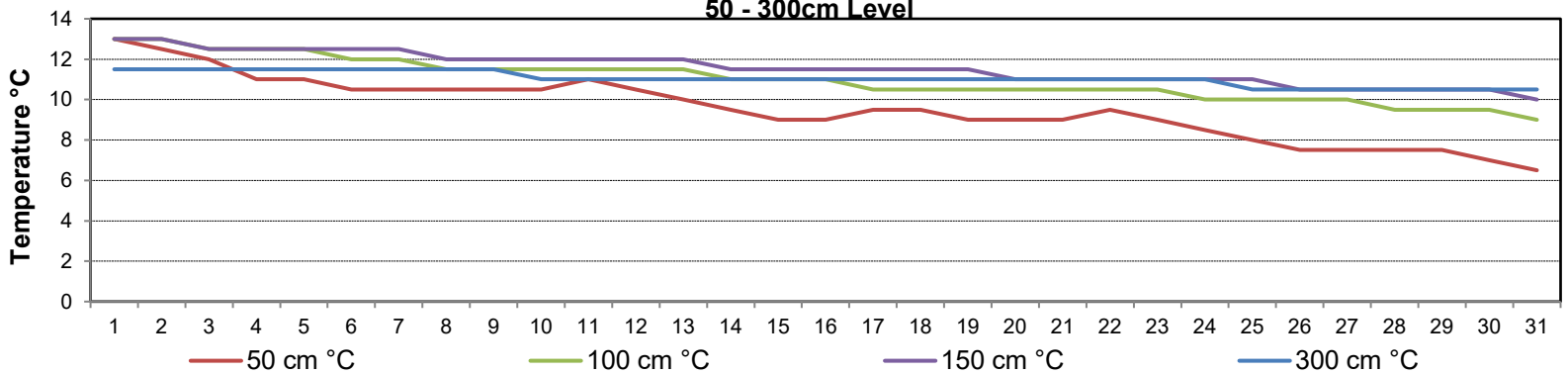
**Bright Sunshine, Global and Diffuse Radiation for October 2024**



**Soil Temperatures for October 2024**  
Surface - 20cm Level



**Soil Temperatures for October 2024**  
50 - 300cm Level





**SRC CLIMATE REFERENCE STATION DAILY DATA REPORT**

**SASKATOON STATION 4057180**

52°09' N 106°36' W 497 m asl Estab. 1963

Preliminary **OCTOBER 2024**

**Extreme Records for October**

Max/Min Temperature °C			Precipitation - Monthly mm			Wind Monthly km/h			CRS Bright Sunshine - Monthly								
S'toon Area	Date	Site	S'toon CRS	Date	S'toon Area	Date	Site	S'toon CRS	Date	S'toon Airport	Date	S'toon CRS**	Date	Hours	Year	No. of Days	Year
32.2	05/1943	SA US SF	28.5	06/1980,08/1984	72.4	1969	SF	69.8	1969	138 <sup>NW</sup>	16/1967	97	1976	231.3	2010	31	1965, 88
-25.6	26/1919	SE US	-21.5	29/1991	0.0	1965*	NRC*	0.0	2000					61.1	2016	19	2016

\*\*1975 forward \* more than one year/site

Notable Events for CRS Saskatoon - October						Saskatoon Area Stations			Glossary	
Element	Type	Day	New Record	Old Record	Year	Station	Operational Period	Code	Description	
Temperature	Highest Minimum Daily	19	5.9	5	1967	SM	NWMP c. 1892-1901	T	Trace of precipitation	
						SE	Eby 1901-1941	Normal	30 year average beginning with the decade	
						US	Univ. of Sask. 1915-1964	SOG	Depth of snow-on-the-ground in cm	
						S	Saskatoon 1941-1942	na	not available	
						SA	Saskatoon A 1942 -	<b>Degree-days</b>		
						NRC	Nat. Res. Council 1952-1966	Tm	Mean Temperature	
						SRC	Sask. Res. Council 1963-	Growing	(Tm-5°C); if Tm ≤ 5°C then GDD = 0	
						SWT	S'toon Water Treatment Plant 1974 -	Heating	(18°C-Tm); if Tm ≤ 18°C then HDD = 0	
						SC	S'toon Central Ave 1974-1989	Cooling	(Tm-18°C); if Tm ≥ 18°C then CDD = 0	
						S1	Saskatoon 1 1976-1978	Extreme Cooling	(Tm-24°C); if Tm ≥ 24°C then CDD = 0	
						S2	Saskatoon 2 1977-1990	<b>October 28 Site Fall Maintenance</b>		
						K	S'toon Kernen Farm 1993-2004	- new 20 cm soil moisture instrument installed		
						KCS	S'toon Kernen Farm CS 1996-	- replaced snow depth screen		
						RCS	Environment Canada 2008-	- general fall maintenance on geonor, replacement of desiccant, capped tipping bucket, checked battery charge levels		
						SF	Sutherland Forestry 1943-1970			

**SRC proudly recognizes the following CRS supporters:**





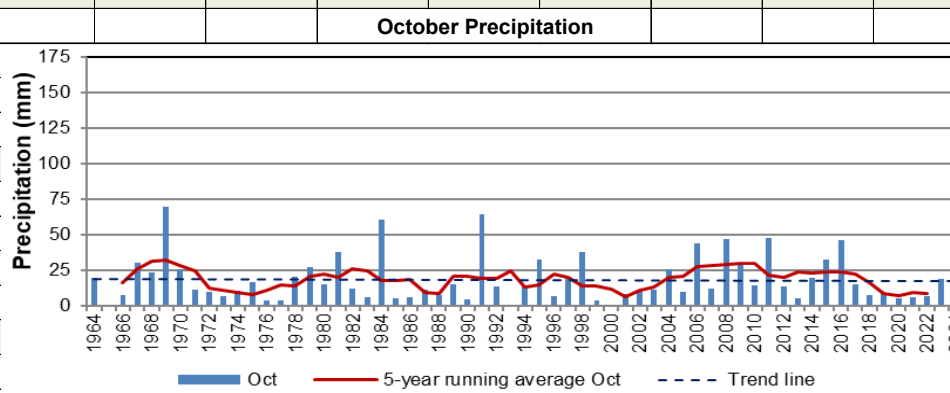
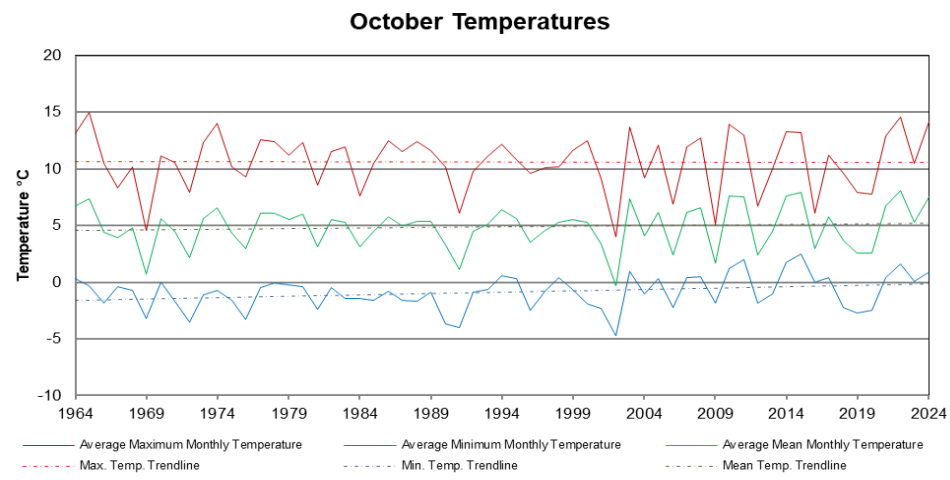
SRC CLIMATE REFERENCE STATION DAILY DATA REPORT

SASKATOON STATION 4057180

52°09' N 106°36' W 497 m asl Estab. 1963

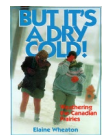
Preliminary October 2024

Day	2 meter Wind Speed			Soil Moisture at 0900 hrs (rounded to the 0.5%)		
	Daily Average	Max ½ hr Avg	½ hr Extreme Max	10 cm	20 cm	50 cm
	km/h	km/h	km/h	% by volume (soil type is Loam (45.5% Sand, 41.1% Silt, 13.3% Clay))		
1	8.0	14.7	22.9	13.0	8.0	10.5
2	10.0	23.6	38.5	12.5	8.0	10.5
3	9.0	18.0	28.7	12.0	8.0	10.5
4	12.0	21.8	37.3	11.0	7.5	10.5
5	20.0	33.1	52.3	11.0	8.0	10.0
6	6.0	12.6	22.9	13.5	8.0	10.0
7	8.0	15.7	29.8	14.0	7.5	10.0
8	3.0	7.5	18.3	13.0	8.0	10.0
9	3.0	9.7	20.0	11.5	7.5	10.5
10	7.0	14.6	24.7	11.5	8.0	10.5
11	3.0	10.7	19.5	10.5	8.0	10.5
12	7.0	18.4	31.6	10.0	8.0	10.5
13	7.0	14.0	23.5	10.0	7.5	10.5
14	17.0	24.9	43.7	9.5	7.5	10.0
15	6.0	16.4	31.6	9.5	7.5	10.0
16	2.0	8.6	20.6	8.5	7.5	10.0
17	12.0	22.2	36.8	8.5	8.0	10.0
18	7.0	13.4	23.5	7.5	7.5	10.0
19	11.0	14.8	28.7	7.0	7.5	10.0
20	10.0	22.6	35.6	7.0	8.0	10.0
21	16.0	24.6	37.9	6.5	8.0	10.0
22	12.0	17.1	28.7	6.0	7.5	10.0
23	10.0	17.2	27.0	5.5	7.5	10.0
24	11.0	27.4	47.7	5.5	7.5	10.0
25	7.0	16.1	29.3	5.0	7.5	10.0
26	14.0	20.6	36.2	5.0	7.5	9.5
27	17.0	22.7	35.0	5.0	7.5	10.0
28	11.0	16.3	28.1	5.0	7.5	9.5
29	6.0	18.4	30.4	4.0	7.5	9.5
30	5.0	8.4	16.0	4.5	7.5	10.0
31	7.0	29.0	29.0	4.0	7.5	9.5
Total						
Mean				9	8	10.1
Extreme	20.0	33.1	52.3	14	8	10.5
Date	5	5	5	7	1	1



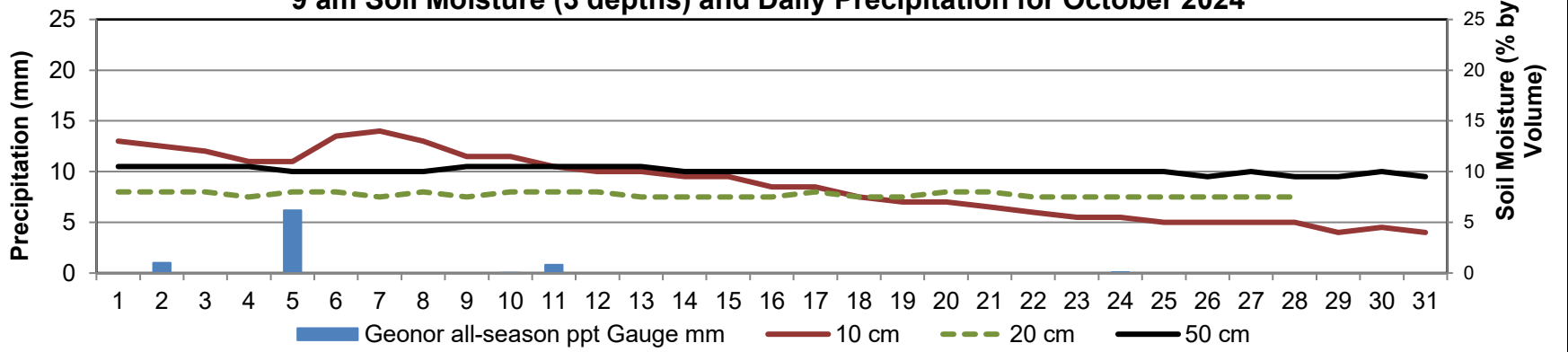
Note: Red numbers indicate manual calculation; Red cell indicate data not available

SRC proudly recognizes the following CRS supporters:

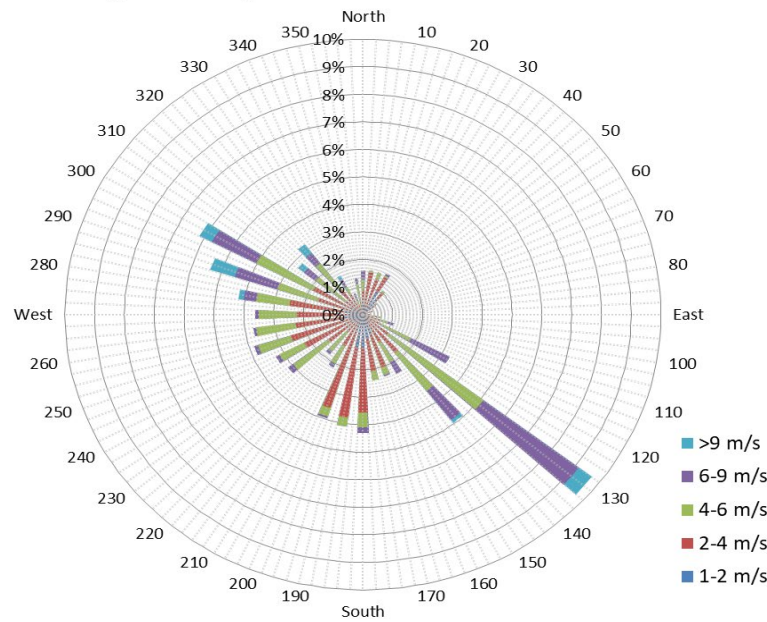




9 am Soil Moisture (3 depths) and Daily Precipitation for October 2024



10 minute Average Wind Speed and Direction Saskatoon October 2024



1/2 hr Maximum Wind Speed and Direction Saskatoon October 2024

