



SRC CLIMATE REFERENCE STATION DAILY DATA REPORT

CONSERVATION LEARNING CENTRE

Saskatchewan 53.03°N 105.77°W 451m asl Estab. 2011

Preliminary **October 2022**

Day	Temperature						Degree-days			Precipitation			Relative Humidity		Station Pressure <i>corrected to sea level</i>	
	Max	Avg Max	Min	Avg Min	Mean	Avg Mean	Growing	Heating	Cooling	Geonor Weighing Gauge	Tipping Bucket	Snow-on-Ground 0900h	Max ½ hr Avg	Min ½ hr Avg	Max ½ hr Avg	Min ½ hr Avg
	°C	2012-2021	°C	2012-2021	°C	2012-2021	5°C base	18°C base	18°C base	mm	mm	cm	%	%	mbar	mbar
1	18.9	12.5	4.0	2.9	11.5	7.7	6.5	6.5	0.0	0.0	0.0	0	97	50	1026	1021
2	22.7	12.1	4.3	1.7	13.5	6.9	8.5	4.5	0.0	0.0	0.0	0	97	43	1021	1015
3	19.2	10.7	4.5	-0.6	11.9	5.0	6.9	6.1	0.0	0.0	0.0	0	100	39	1020	1015
4	22.8	9.6	2.9	-1.1	12.9	4.3	7.9	5.1	0.0	0.0	0.0	0	99	47	1018	1014
5	10.3	11.2	-4.0	-1.0	3.2	5.1	0.0	14.8	0.0	0.0	0.0	0	89	42	1034	1017
6	8.9	13.1	-9.1	1.3	-0.1	7.2	0.0	18.1	0.0	0.0	0.0	0	97	38	1036	1029
7	19.3	12.3	-1.2	0.8	9.1	6.6	4.1	8.9	0.0	0.0	0.0	0	94	40	1029	1020
8	21.7	9.2	1.7	-2.2	11.7	3.5	6.7	6.3	0.0	0.0	0.0	0	99	37	1020	1016
9	21.5	9.7	-1.1	-2.7	10.2	3.5	5.2	7.8	0.0	0.0	0.0	0	100	34	1019	1011
10	24.5	12.8	2.1	-2.4	13.3	5.2	8.3	4.7	0.0	0.0	0.0	0	95	27	1011	991
11	16.8	10.3	5.9	-0.9	11.4	4.7	6.4	6.6	0.0	5.6	4.4	0	94	49	1003	991
12	7.0	8.5	2.3	-2.1	4.7	3.2	0.0	13.3	0.0	0.0	0.0	0	59	27	1013	1003
13	10.7	7.8	0.6	-3.1	5.7	2.3	0.7	12.3	0.0	0.0	0.0	0	54	23	1014	1009
14	10.6	8.7	-6.9	-2.2	1.9	3.3	0.0	16.1	0.0	0.0	0.0	0	92	28	1009	1005
15	8.6	9.9	-3.4	-1.8	2.6	4.0	0.0	15.4	0.0	0.0	0.0	0	84	48	1026	1008
16	4.5	9.3	-5.6	-1.8	-0.6	3.8	0.0	18.6	0.0	0.0	0.0	0	97	52	1028	1024
17	13.7	11.3	-5.5	-1.3	4.1	5.0	0.0	13.9	0.0	0.0	0.0	0	84	32	1024	1019
18	17.7	10.0	0.3	-1.2	9.0	4.4	4.0	9.0	0.0	0.0	0.0	0	79	34	1019	1016
19	20.4	8.8	3.8	-3.2	12.1	2.8	7.1	5.9	0.0	0.0	0.0	0	86	35	1020	1009
20	16.2	7.2	5.2	-3.0	10.7	2.1	5.7	7.3	0.0	0.0	0.0	0	77	41	1008	999
21	10.2	8.0	3.0	-1.8	6.6	3.1	1.6	11.4	0.0	0.0	0.0	0	86	57	1000	997
22	8.8	5.6	-0.4	-4.5	4.2	0.6	0.0	13.8	0.0	0.0	0.0	0	91	54	1011	1000
23	4.9	6.1	-1.2	-3.7	1.9	1.2	0.0	16.1	0.0	2.3	0.0	0	99	55	1016	1011
24	2.6	7.0	-2.2	-2.2	0.2	2.4	0.0	17.8	0.0	1.4	0.0	0	99	80	1014	1003
25	3.3	5.9	-2.1	-2.0	0.6	2.0	0.0	17.4	0.0	0.4	0.0	0	99	79	1009	1003
26	6.7	4.1	-3.3	-3.5	1.7	0.3	0.0	16.3	0.0	1.8	0.0	0	100	76	1008	1003
27	10.0	3.2	-2.0	-4.5	4.0	-0.7	0.0	14.0	0.0	0.0	0.0	0	97	54	1002	998
28	12.3	2.5	-2.0	-5.0	5.2	-1.2	0.2	12.8	0.0	0.0	0.0	0	89	40	1011	1000
29	12.0	3.1	-3.5	-4.0	4.3	-0.5	0.0	13.7	0.0	0.0	0.0	0	93	22	1012	1009
30	12.6	3.0	-6.3	-4.2	3.2	-0.6	0.0	14.8	0.0	0.0	0.0	0	88	43	1011	995
31	9.1	3.0	-7.3	-4.2	0.9	-0.6	0.0	17.1	0.0	0.0	0.0	0	93	42	1006	996
Total							79.8	366.4	0.0	11.5						
Avg	13.2	8.3	-0.9	-2.1	6.2	3.1	Monthly 2012 - 2021 Average			20.0	2012-2021 Average					
Extreme	24.5	25.2	-9.1	-15.5			37.4	461.4	0	283.1	2022 Cumulative ppt		100	22	1036	991
Date	10	2021	6	2019						343.6	Cumulative Average		3	29	6	10

Fall maintenance 19 Oct 2022 including: changed desiccant where needed, removing tipping bucket from site for calibration, replaced all three transducers in all-season ppt gauge with new one, normal fall maintenance on all-season ppt gauge, replaced camera checked batteries and solar panels

SRC proudly recognizes the following CRS supporters:

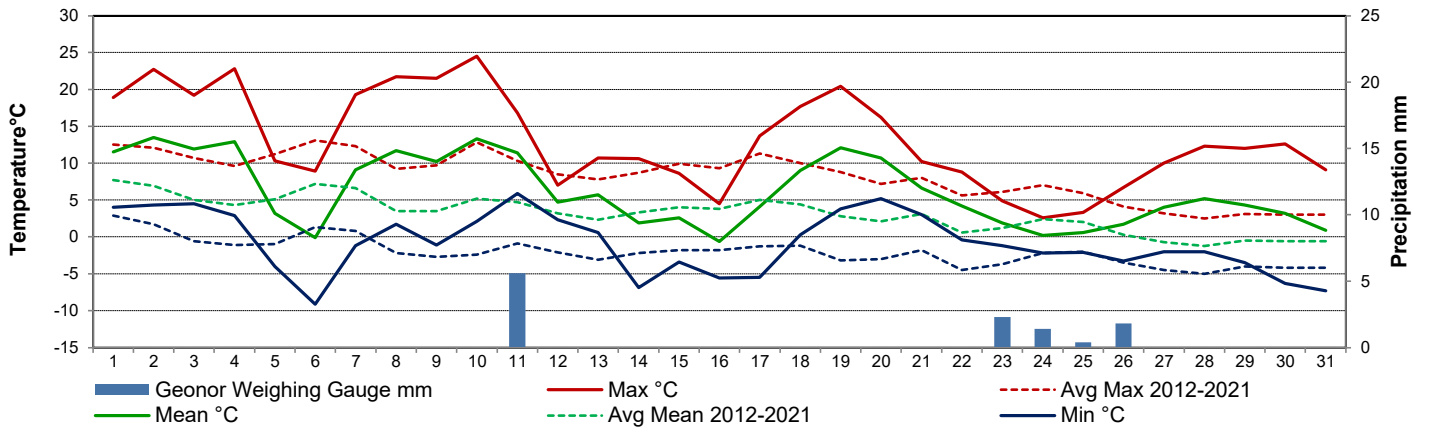


Agriculture and Agri-Food Canada

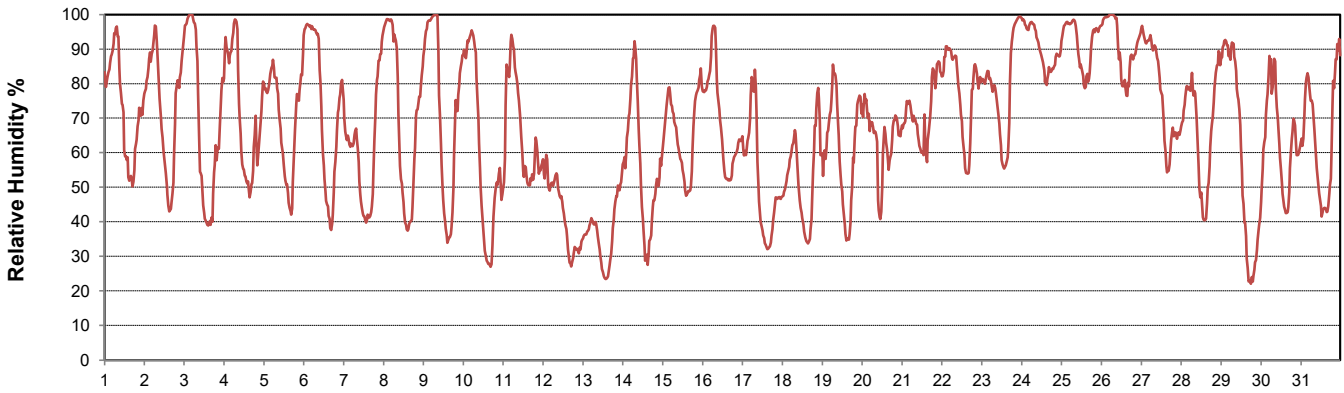
Agriculture et Agroalimentaire Canada



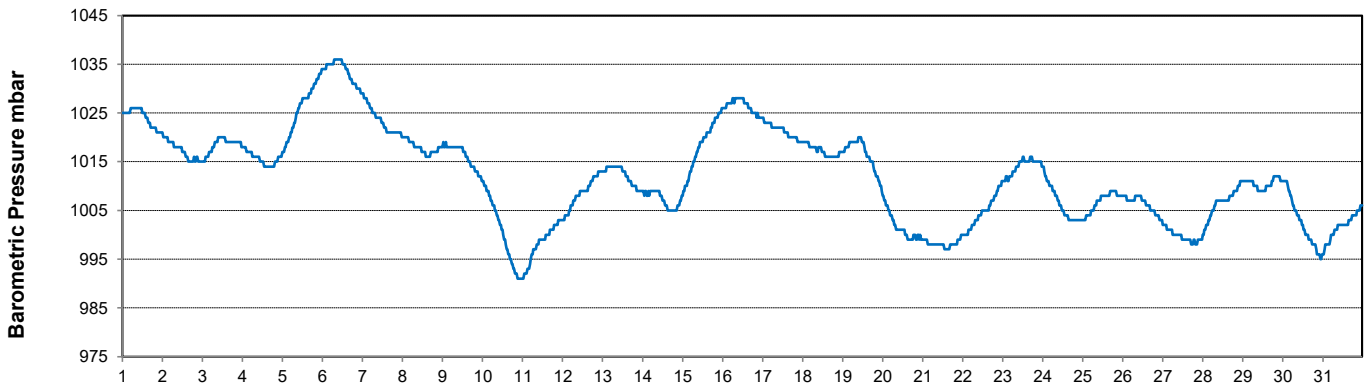
Temperature and Precipitation for October 2022



Relative Humidity for October 2022



Barometric Pressure Corrected to Sea Level for October 2022





SRC CLIMATE REFERENCE STATION DAILY DATA REPORT

CONSERVATION LEARNING CENTRE

Saskatchewan 53.03°N 105.77°W 451m asl Estab. 2011

Preliminary

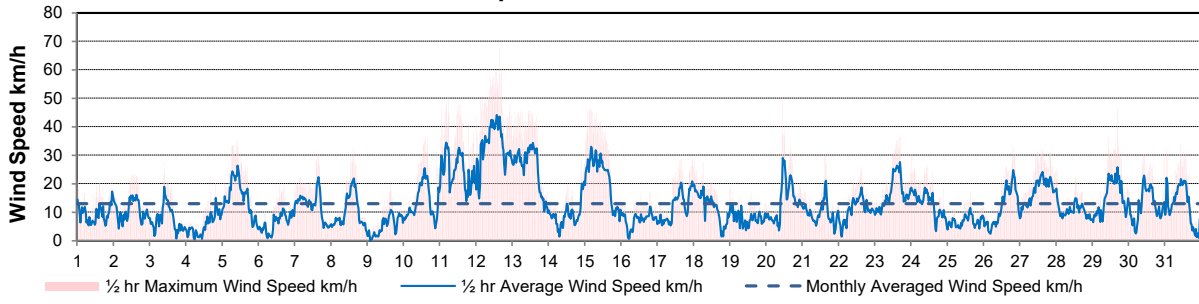
October 2022

Day	Wind Gust (10 meter)			Wind Speed (10 meters)	Soil Temperatures at 0900hrs								Radiation				
	Max	Direction	Time	Daily Average	Surface	5 cm	10 cm	20 cm	50 cm	100 cm	150 cm	300 cm	Bright Sunshine	Possible	% Possible	Global	Diffuse
	km/h			km/h	°C	°C	°C	°C	°C	°C	°C	°C	hours	hours		MJ/m ²	MJ/m ²
1	21.5	S	23:20	9.4	6.0	10.5	11.0	11.5	11.5	11.0	11.0	8.5	9.6	11.6	82.9	11.5	3.8
2	23.5	SSW	12:23	10.6	8.5	9.5	10.0	11.0	11.5	11.0	11.0	8.5	10.9	11.5	94.7	12.7	1.9
3	27.5	NE	9:41	7.5	10.5	9.5	10.0	11.0	11.5	11.0	11.0	8.5	7.7	11.5	67.2	9.9	4.5
4	20.5	NW	19:47	5.5	6.5	9.0	10.0	11.0	11.0	11.0	11.0	8.5	10.1	11.4	88.8	11.0	3.6
5	35.6	NE	10:26	15.3	6.5	9.5	10.0	10.5	11.0	11.0	10.5	8.5	9.4	11.3	83.1	12.5	2.0
6	19.3	S	17:17	6.3	-4.0	5.5	6.5	9.0	11.0	11.0	10.5	8.5	10.3	11.2	91.6	13.5	1.8
7	30.9	NW	15:05	12.3	3.5	5.5	6.5	8.0	10.0	11.0	10.5	8.5	10.3	11.2	92.2	11.5	1.9
8	31.6	NW	14:31	10.1	7.5	6.5	7.0	8.5	10.0	10.5	10.5	8.5	9.9	11.1	89.2	11.3	2.3
9	19.9	SW	15:44	5.3	2.0	6.5	7.5	8.5	9.5	10.5	10.5	8.5	9.5	11.0	86.1	11.0	1.9
10	36.2	SSW	14:31	13.7	7.5	6.5	7.5	8.5	9.5	10.5	10.5	8.5	9.7	11.0	88.4	11.1	1.9
11	50.5	NW	5:30	24.5	6.0	8.5	9.0	9.0	9.5	10.0	10.5	8.5	4.3	10.9	39.4	7.7	3.8
12	67.7	NNW	15:59	33.3	2.5	7.0	7.5	8.5	9.5	10.0	10.5	8.5	9.3	10.8	85.9	11.2	2.0
13	45.8	NW	10:43	25.3	2.0	4.5	5.5	7.5	9.0	10.0	10.0	8.5	10.1	10.8	93.9	11.3	1.5
14	28.4	NW	22:16	9.4	-3.5	4.0	5.0	6.5	8.5	10.0	10.0	8.5	7.5	10.7	70.2	9.1	2.8
15	46.7	NNW	4:00	22.0	2.5	6.0	6.5	7.0	8.5	9.5	10.0	8.5	7.8	10.6	73.4	8.6	3.9
16	17.3	ESE	19:27	7.3	-0.5	4.0	4.5	6.5	8.0	9.5	10.0	8.5	0.4	10.6	3.8	4.5	4.0
17	29.1	S	23:27	12.1	-1.5	4.0	4.5	6.0	8.0	9.5	10.0	8.5	10.0	10.5	95.3	9.9	1.5
18	28.0	S	0:33	12.0	2.5	4.5	5.0	6.0	7.5	9.0	10.0	8.5	9.4	10.4	90.2	9.5	2.1
19	19.2	NW	0:46	7.9	4.0	5.0	5.5	6.5	7.5	9.0	9.5	8.5	9.0	10.4	86.9	8.1	2.2
20	48.0	NNW	11:21	13.9	8.0	6.0	6.0	6.5	7.5	9.0	9.5	8.5	0.1	10.3	1.0	2.4	2.3
21	30.7	WNW	15:47	9.5	5.0	5.5	6.0	6.5	7.5	9.0	9.5	8.5	0.6	10.2	5.9	3.2	3.0
22	25.8	ENE	15:27	10.9	1.5	5.5	6.0	6.5	7.5	8.5	9.5	8.5	4.5	10.2	44.3	6.3	3.9
23	36.4	NE	17:08	16.7	0.5	4.5	5.0	6.0	7.5	8.5	9.5	8.5	0.0	10.1	0.0	3.0	2.9
24	30.2	NNE	0:28	12.9	-1.5	4.5	4.5	5.5	7.0	8.5	9.0	8.5	1.0	10.0	10.0	5.1	4.5
25	17.4	W	15:06	7.0	-1.0	4.0	4.5	5.5	7.0	8.5	9.0	8.5	2.5	10.0	25.1	5.3	4.0
26	33.0	S	19:39	11.7	-3.0	3.5	4.0	5.0	7.0	8.5	9.0	8.5	7.4	9.9	74.8	7.1	3.7
27	32.1	SW	15:32	17.4	0.0	3.0	3.5	5.0	6.5	8.0	9.0	8.5	4.6	9.8	46.8	5.6	2.9
28	25.2	SW	0:12	10.6	-0.5	3.0	3.5	5.0	6.5	8.0	9.0	8.5	6.3	9.8	64.5	6.4	2.7
29	46.2	WNW	16:54	15.3	0.5	2.5	3.0	4.5	5.5	8.0	9.0	8.5	8.8	9.7	90.7	7.1	2.0
30	30.3	SSW	10:17	12.4	-1.0	2.0	2.5	4.0	6.0	7.5	8.5	8.5	8.5	9.6	88.3	7.5	1.3
31	33.3	WNW	10:58	12.5	3.0	2.5	3.0	4.0	4.5	7.5	8.5	8.5	2.9	9.6	30.3	5.5	3.9
Total													212.4	327.5	64.9	260.4	86.5
Mean				12.9	2.6	5.6	6.1	7.3	8.5	9.5	9.7	8.5					
Extreme	67.7	NNW	15:59														
Date	12																

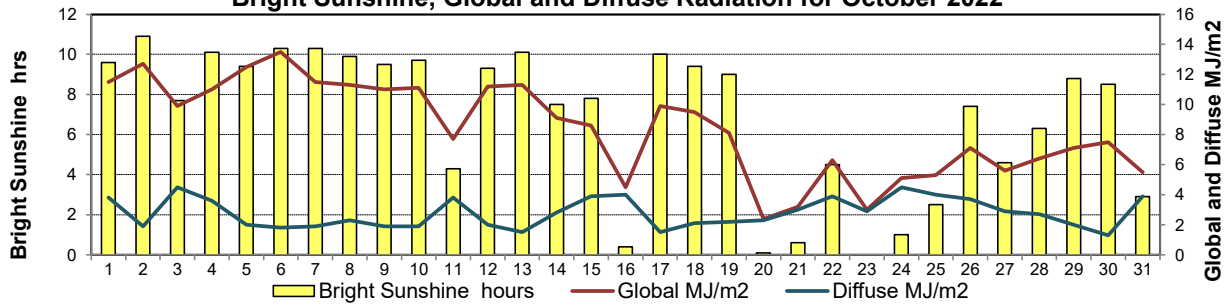
GLOSSARY OF TERMS

Degree-days	Radiation
Tm Mean Temperature	Bright Sunshine is the unobstructed direct radiation from the sun, as opposed to the shading of a location by clouds or by other atmospheric obstructions.
Growing (Tm-5°C); if Tm ≤ 5°C then GDD = 0	
Heating (18°C-Tm); if Tm ≥ 18°C then HDD = 0	
Cooling (Tm-18°C); if Tm ≤ 18°C then CDD = 0	Diffuse is radiation reaching the earth's surface after having been scattered from the direct solar beam
T Trace of Precipitation	Global is the sum of the direct solar and diffuse radiation
SOG Depth of snow-on-the-ground	Relative Humidity The ratio of the air's water vapour content of its water vapour capacity which changes with temperature.
Red Cell no data available	Air Pressure The force exerted by the weight of a column of air above a given point
Red Number manual calculation	Wind Gust The daily highest instantaneous value recorded irrespective of direction and/or duration

Wind Speed for October 2022

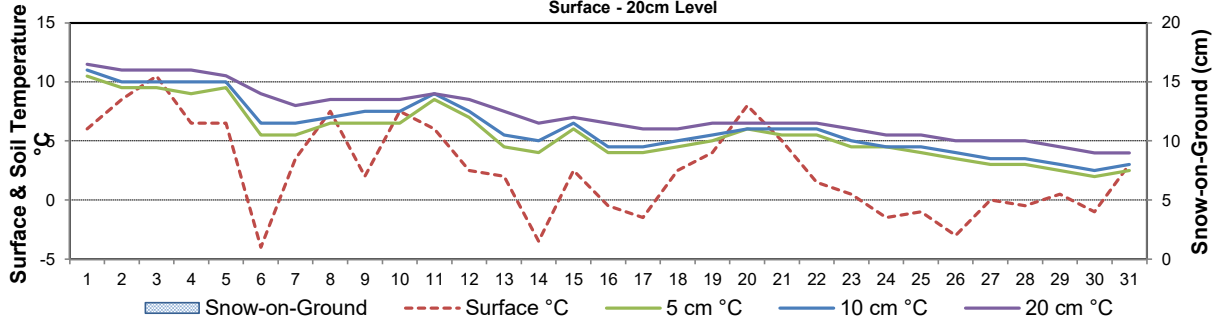


Bright Sunshine, Global and Diffuse Radiation for October 2022



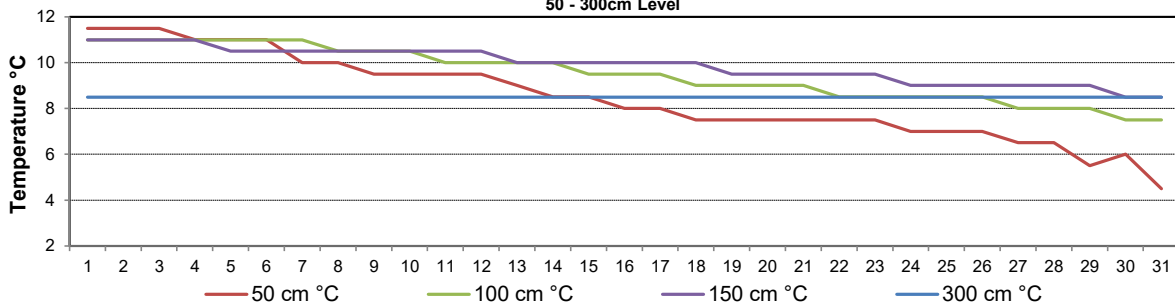
Soil Temperatures for October 2022

Surface - 20cm Level



Soil Temperatures for October 2022

50 - 300cm Level





SRC CLIMATE REFERENCE STATION DAILY DATA REPORT

CONSERVATION LEARNING CENTRE

Saskatchewan 53.03°N 105.77°W 451m asl Estab. 2011

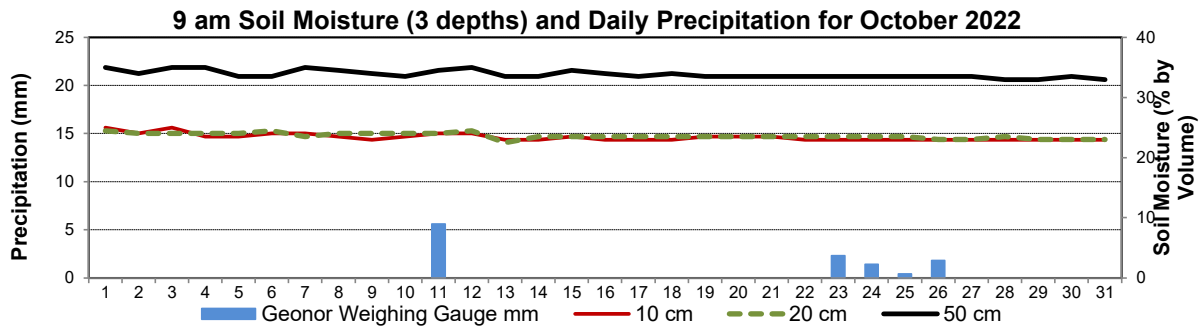
Preliminary

October 2022

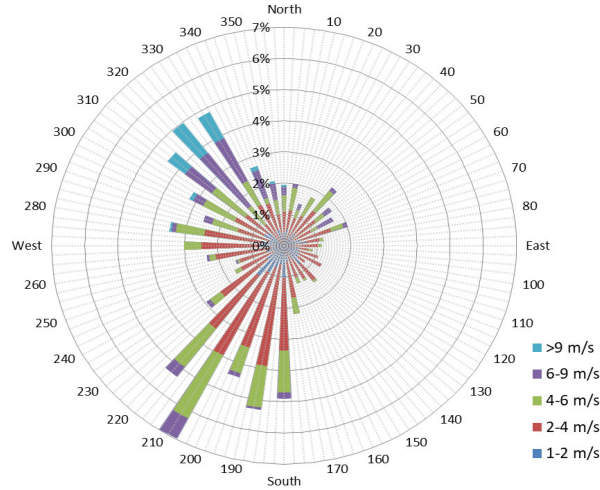
Day	2 meter Wind Speed			Soil Moisture at 0900 hrs (rounded to the 0.5%)																	
	Daily Average	Max ½ hr Avg	½ hr Extreme Max	10 cm	20 cm	50 cm															
	km/h	km/h	km/h	% by volume (soil type is Clay Loam)																	
1	6.0	11.6	16.2	25.0	24.5	35.0															
2	5.0	12.9	20.0	24.0	24.0	34.0															
3	2.0	13.8	19.3	25.0	24.0	35.0															
4	1.0	5.8	13.3	23.5	24.0	35.0															
5	10.0	18.8	29.3	23.5	24.0	33.5															
6	4.0	9.6	16.2	24.0	24.5	33.5															
7	8.0	16.5	23.3	24.0	23.5	35.0															
8	4.0	16.0	23.7	23.5	24.0	34.5															
9	1.0	4.2	15.2	23.0	24.0	34.0															
10	8.0	19.6	28.7	23.5	24.0	33.5															
11	18.0	25.0	36.9	24.0	24.0	34.5															
12	24.0	32.2	48.5	24.0	24.5	35.0															
13	18.0	25.2	36.2	23.0	22.5	33.5															
14	7.0	15.1	22.2	23.0	23.5	33.5															
15	16.0	24.1	35.2	23.5	23.5	34.5															
16	5.0	7.8	14.5	23.0	23.5	34.0															
17	8.0	15.5	22.2	23.0	23.5	33.5															
18	9.0	14.5	20.2	23.0	23.5	34.0															
19	4.0	9.0	14.1	23.5	23.5	33.5															
20	10.0	21.1	31.0	23.5	23.5	33.5															
21	7.0	16.4	24.1	23.5	23.5	33.5															
22	8.0	14.9	20.0	23.0	23.5	33.5															
23	12.0	20.5	27.7	23.0	23.5	33.5															
24	10.0	14.5	22.0	23.0	23.5	33.5															
25	5.0	9.3	14.7	23.0	23.5	33.5															
26	9.0	18.5	25.2	23.0	23.0	33.5															
27	13.0	19.6	27.0	23.0	23.0	33.5															
28	8.0	13.9	19.5	23.0	23.5	33.0															
29	11.0	19.2	34.8	23.0	23.0	33.0															
30	9.0	18.5	25.0	23.0	23.0	33.5															
31	9.0	10.0	27.0	23.0	23.0	33.0															
Total																					
Mean				23	24	33.9															
Extreme	24.0	32.2	48.5	25	24.5	35															
Date	8.5	8.5	8.5	11	11	11															

SRC proudly recognizes the following CRS supporters:





10 minute Average Wind Speed and Direction CLC October 2022



1/2 hr Maximum Wind Speed and Direction CLC October 2022

