



SRC CLIMATE REFERENCE STATION DAILY DATA REPORT

SASKATOON STATION 4057180

52°09' N 106°36' W 497 m asl Estab. 1963

Preliminary NOVEMBER 2024

Day	Temperature						Degree-days			Precipitation			Relative Humidity		Station Pressure (sea level)	
	Max	Normal Max	Min	Normal Min	Mean	Normal Mean	Growing	Heating	Cooling	Geonor all-season ppt Gauge	Notes	Snow-on-Ground 0900h	Max ½ hr Avg	Min ½ hr Avg	Max ½ hr Avg	Min ½ hr Avg
	°C	1991-2020	°C	1991-2020	°C	1991-2020	5°C base	18°C base	18°C base	mm		cm	%	%	mbar	mbar
1	8.7	3.8	-4.3	-3.8	2.2	0.0	0.0	15.8	0.0	0.0		0	91	46	1014	1012
2	7.5	3.6	-9.1	-4.5	-0.8	-0.4	0.0	18.8	0.0	0.0		0	94	51	1013	1004
3	6.4	3.6	-3.8	-4.4	1.3	-0.4	0.0	16.7	0.0	0.0		0	90	61	1011	1003
4	9.0	3.6	-5.9	-4.0	1.6	-0.2	0.0	16.4	0.0	0.0		0	89	38	1011	999
5	2.8	3.5	-3.2	-6.1	-0.2	-1.3	0.0	18.2	0.0	0.0		0	88	59	1019	999
6	4.2	1.9	-2.5	-7.1	0.9	-2.6	0.0	17.1	0.0	0.0		0	86	53	1020	1010
7	14.6	1.5	0.8	-7.1	7.7	-2.8	2.7	10.3	0.0	0.0		0	76	32	1018	1008
8	15.8	0.8	2.3	-7.3	9.1	-3.3	4.1	8.9	0.0	0.0		0	83	40	1018	1005
9	12.1	-0.9	0.1	-8.9	6.1	-4.9	1.1	11.9	0.0	0.4	slushy snow	0	90	49	1012	1005
10	4.3	-0.9	0.3	-8.8	2.3	-4.8	0.0	15.7	0.0	4.3	slushy snow	0	95	86	1019	1010
11	7.2	0.0	1.2	-9.7	4.2	-4.9	0.0	13.8	0.0	0.0		0	84	64	1019	997
12	9.8	0.5	0.5	-9.0	5.2	-4.3	0.2	12.8	0.0	0.0		0	81	43	1008	996
13	9.3	2.0	-1.9	-7.5	3.7	-2.8	0.0	14.3	0.0	0.0		0	83	40	1008	1004
14	5.6	1.3	0.6	-7.6	3.1	-3.2	0.0	14.9	0.0	1.2	light rain	0	92	64	1007	1001
15	1.3	1.3	-1.8	-8.1	-0.3	-3.4	0.0	18.3	0.0	0.0		0	90	83	1013	1008
16	-1.4	0.2	-2.3	-8.3	-1.9	-4.0	0.0	19.9	0.0	0.1	light freezing rain	0	93	85	1012	1000
17	7.2	-1.1	-2.0	-8.8	2.6	-5.0	0.0	15.4	0.0	0.0		0	93	50	1010	990
18	1.4	-1.1	-3.9	-9.3	-1.3	-5.2	0.0	19.3	0.0	2.2	snow	0	93	76	1007	996
19	-3.8	-1.3	-7.0	-9.7	-5.4	-5.5	0.0	23.4	0.0	6.2	snow	8	93	72	1016	1007
20	-6.6	-1.6	-11.7	-10.1	-9.2	-5.9	0.0	27.2	0.0	0.0		7	82	68	1024	1016
21	-7.1	-2.4	-9.5	-11.3	-8.3	-6.9	0.0	26.3	0.0	2.5	snow	6	88	80	1025	1022
22	-8.1	-2.4	-14.7	-10.8	-11.4	-6.6	0.0	29.4	0.0	0.0		8	88	71	1024	1022
23	-8.9	-2.1	-13.9	-11.2	-11.4	-6.7	0.0	29.4	0.0	6.1	snow	8	89	81	1023	1011
24	-9.0	-2.7	-17.6	-11.4	-13.3	-7.1	0.0	31.3	0.0	7.1	snow	25	89	83	1022	1011
25	-13.6	-3.2	-22.8	-12.2	-18.2	-7.7	0.0	36.2	0.0	0.0		20	84	77	1025	1022
26	-18.3	-4.3	-25.7	-12.6	-22.0	-8.4	0.0	40.0	0.0	0.0		20	81	74	1022	1016
27	-12.2	-3.6	-18.4	-11.3	-15.3	-7.5	0.0	33.3	0.0	0.2	light snow	20	84	79	1021	1017
28	-12.7	-3.5	-25.6	-11.5	-19.2	-7.5	0.0	37.2	0.0	0.0		18	79	72	1027	1021
29	-22.0	-3.9	-29.3	-11.2	-25.7	-7.6	0.0	43.7	0.0	0.0		18	77	71	1028	1026
30	-17.0	-4.0	-26.3	-11.5	-21.7	-7.8	0.0	39.7	0.0	2.3	snow	18	82	74	1026	1023
Total							8.1	675.6	0.0	32.6			Extreme / Date	Extreme / Date	Extreme / Date	Extreme / Date
Avg	-0.5	-0.4	-8.6	-8.8	-4.5	-4.6	1991-2020 Normal			13.8	1991-2020 Normal					
Extreme Date	15.8		-29.3				3.9	678.7	0.0	403.5	Year to date 2024 Cumulative		95	32	1028	990
	8		29							342.4	Year to date Cumulative Normal		10	7	29	17

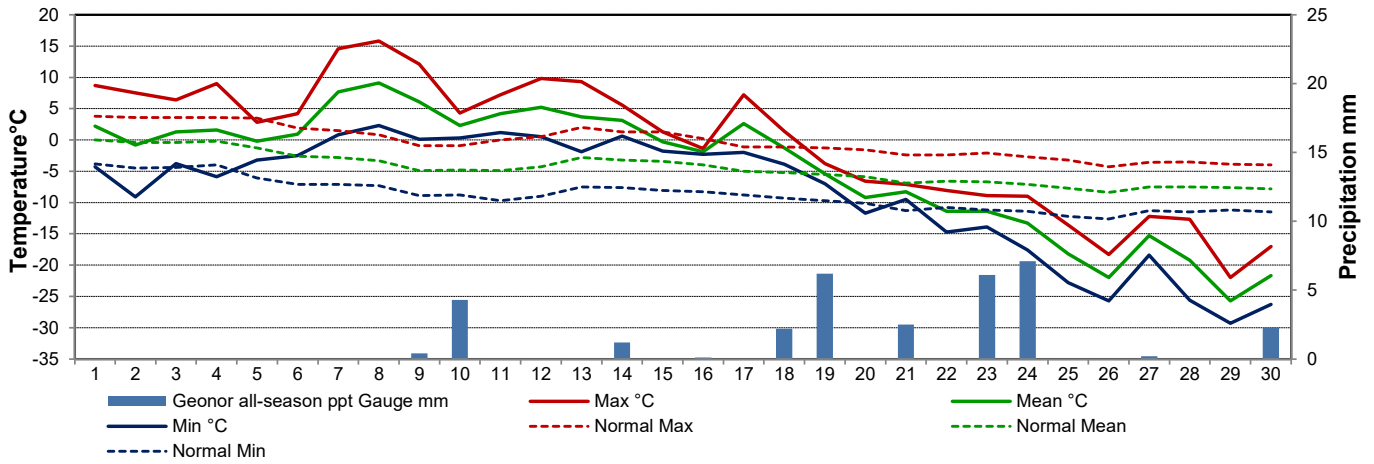
Note: Red numbers indicate manual calculation; Red cell indicate data not available

It has not been corrected for wind speed.

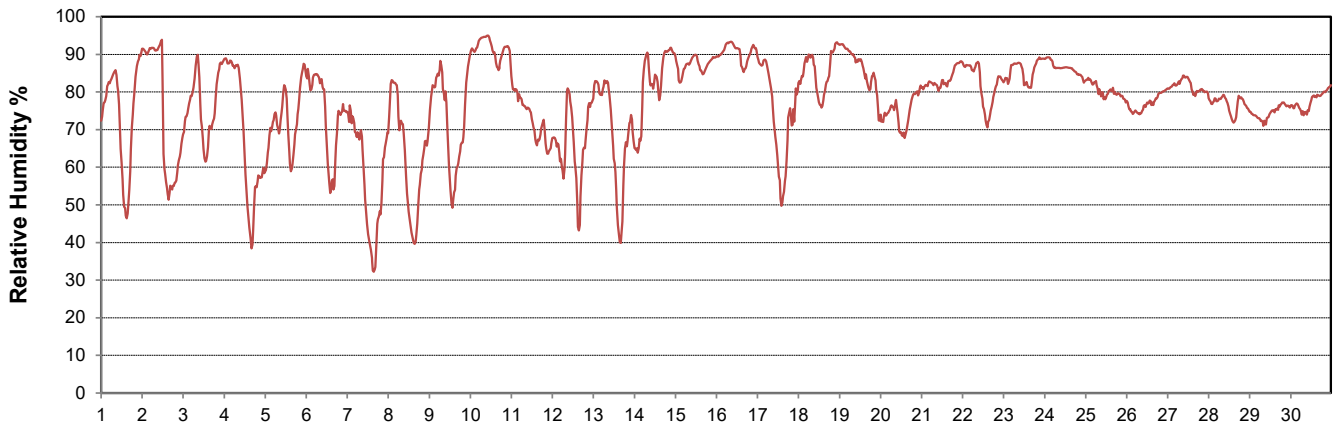
SRC proudly recognizes the following CRS supporters:



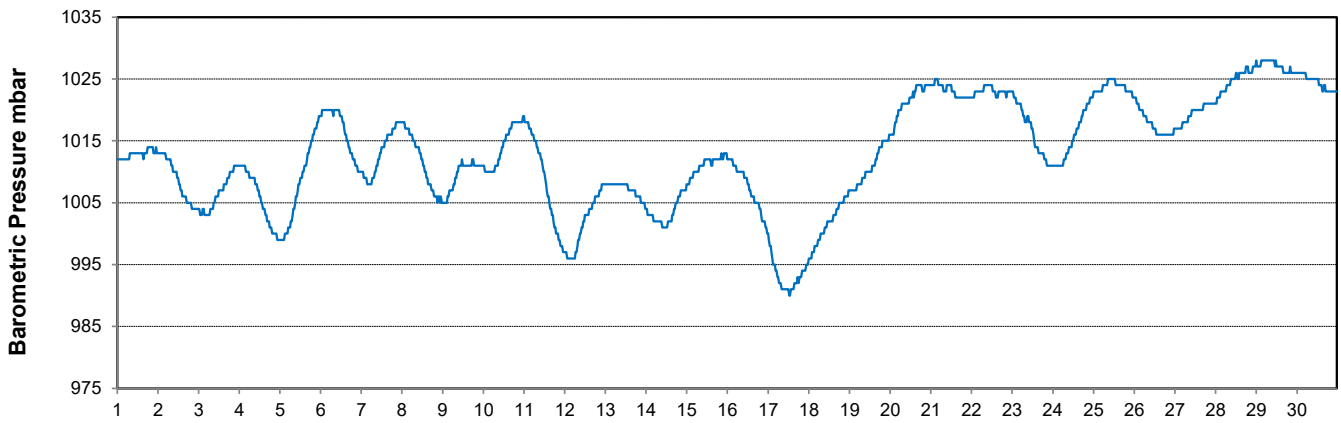
### Temperature and Precipitation for November 2024



### Relative Humidity for November 2024



### Barometric Pressure Corrected to Sea Level for November 2024





SRC CLIMATE REFERENCE STATION DAILY DATA REPORT

SASKATOON STATION 4057180

52°09' N 106°36' W 497 m asl Estab. 1963

Preliminary NOVEMBER 2024

Day	Wind Gust (10 meter)			Wind Speed (10 meters) Daily Average	Soil Temperatures at 0900hrs								Radiation				
	Max	Direction	Time		Surface	5 cm	10 cm	20 cm	50 cm	100 cm	150 cm	300 cm	Bright Sunshine	Possible	% Possible	Global	Diffuse
	km/h				°C	°C	°C	°C	°C	°C	°C	°C	hours	hours		MJ/m <sup>2</sup>	MJ/m <sup>2</sup>
1	27.0	SE	0:35	10.2	-2.5	0.5	1.5	3.0	6.0	9.0	10.0	10.5	8.5	9.6	88.9	7.0	1.5
2	35.9	SE	16:24	13.8	-8.0	-1.0	0.5	2.0	6.0	9.0	10.0	10.5	1.7	9.5	17.9	4.2	3.1
3	37.8	WNW	15:29	13.2	-4.0	1.5	2.5	3.0	5.5	8.5	10.0	10.5	6.5	9.4	68.9	6.7	1.8
4	26.5	SW	9:57	11.0	-5.5	-0.5	1.0	2.5	5.5	8.5	10.0	10.5	8.7	9.4	92.8	8.0	1.3
5	40.6	NNE	13:53	16.0	-0.5	1.0	1.5	2.5	5.5	8.5	9.5	10.5	0.0	9.3	0.0	2.4	2.4
6	39.5	SSW	15:41	15.3	-2.0	0.5	1.0	2.0	5.0	8.0	9.5	10.0	4.3	9.3	46.4	4.9	3.5
7	34.2	SW	5:57	14.5	3.5	1.5	2.0	2.5	5.0	8.0	9.5	10.0	8.9	9.2	96.7	6.4	1.0
8	41.9	SSW	14:59	16.8	5.0	2.0	2.5	3.0	5.5	8.0	9.5	10.0	8.7	9.1	95.2	5.9	1.4
9	29.6	NNE	15:14	11.3	3.5	2.0	3.5	4.0	5.5	8.0	9.0	10.0	6.3	9.1	69.3	5.7	2.3
10	28.9	NE	3:42	12.6	0.5	3.5	4.0	4.5	6.0	8.0	9.0	10.0	0.0	9.0	0.0	2.0	1.9
11	43.2	SE	14:16	19.6	1.0	2.5	3.0	3.5	6.0	8.0	9.0	10.0	2.1	9.0	23.4	3.5	2.7
12	36.3	S	12:50	15.5	4.5	3.5	4.0	4.0	6.0	8.0	9.0	10.0	4.7	8.9	52.7	4.6	2.3
13	23.8	SW	1:01	12.0	-2.5	1.5	2.5	3.0	6.0	8.0	9.0	10.0	8.1	8.9	91.3	5.7	1.6
14	29.2	SE	1:24	12.8	1.5	1.5	2.0	2.5	5.5	8.0	9.0	10.0	0.9	8.8	10.2	2.8	2.5
15	32.2	WNW	4:30	10.0	-1.5	2.0	2.5	3.5	5.5	7.5	9.0	9.5	0.0	8.8	0.0	1.0	1.0
16	27.8	SSW	22:11	6.1	-2.0	1.5	2.0	2.0	5.0	7.5	8.5	9.5	0.0	8.7	0.0	0.7	0.7
17	32.9	SSE	2:46	13.0	-1.0	1.0	1.5	2.0	5.0	7.5	8.5	9.5	1.0	8.7	11.5	2.9	2.5
18	44.8	NNE	23:15	15.5	-2.0	0.5	1.5	2.0	5.0	7.5	8.5	9.5	0.0	8.6	0.0	1.3	1.3
19	62.2	NW	15:10	32.5	-5.0	0.5	1.0	1.0	4.5	7.5	8.5	9.5	0.0	8.6	0.0	1.7	1.7
20	47.7	NW	4:35	22.2	-12.0	0.5	1.0	-0.5	4.5	7.0	8.5	9.5	5.8	8.5	68.2	4.7	1.7
21	18.2	W	4:25	6.8	-9.5	0.5	1.0	0.5	4.5	7.0	8.5	9.5	0.0	8.5	0.0	2.1	2.1
22	31.5	WNW	11:45	11.5	-11.0	0.5	1.0	1.5	4.0	7.0	8.5	9.5	6.8	8.4	80.8	2.7	0.8
23	33.8	ENE	13:30	15.2	-10.5	0.5	1.0	1.5	4.0	7.0	8.0	9.5	0.0	8.4	0.0	1.4	1.3
24	41.1	NE	5:54	19.9	-13.0	0.5	1.0	1.5	4.0	7.0	8.0	9.5	0.0	8.3	0.0	2.2	2.2
25	18.2	SSW	16:50	5.3	-20.0	0.5	1.0	1.0	4.0	6.5	8.0	9.0	7.2	8.3	86.9	6.2	1.5
26	21.2	SE	11:15	7.3	-20.5	0.5	1.0	1.5	4.0	6.5	8.0	9.0	6.1	8.3	73.9	5.0	1.9
27	35.9	WNW	9:59	14.6	-15.5	0.0	0.5	1.5	4.0	6.5	8.0	9.0	2.1	8.2	25.6	2.8	2.0
28	30.2	WNW	1:18	14.2	-21.0	0.0	0.5	1.0	3.5	6.5	8.0	9.0	7.7	8.2	94.2	6.0	1.4
29	8.4	W	7:41	3.8	-28.5	-0.5	0.5	1.0	3.5	6.5	7.5	9.0	2.3	8.1	28.3	3.1	1.8
30	25.0	E	20:13	8.7	-24.0	-1.0	0.0	0.5	3.5	6.5	7.5	9.0	2.3	8.1	28.4	3.4	2.3
Total													110.7	263.0	42.1	117.0	55.5
Mean				13.4	-6.8	0.9	1.6	2.1	4.9	7.6	8.8	9.7	1991-2020 Normal				
Extreme	62.2	NW	15:10		1971- 2000 Normal for Soil Temperatures								97.4	270.2	36.0	118.5	60.8
Date	19					-2.2	-1.7	-0.5	3.0	5.6	6.8	8.1	No. of Bright Sunshine days = 21				

Note: Red numbers indicate manual calculation; Red cell indicate data not available

SRC proudly recognizes the following CRS supporters:

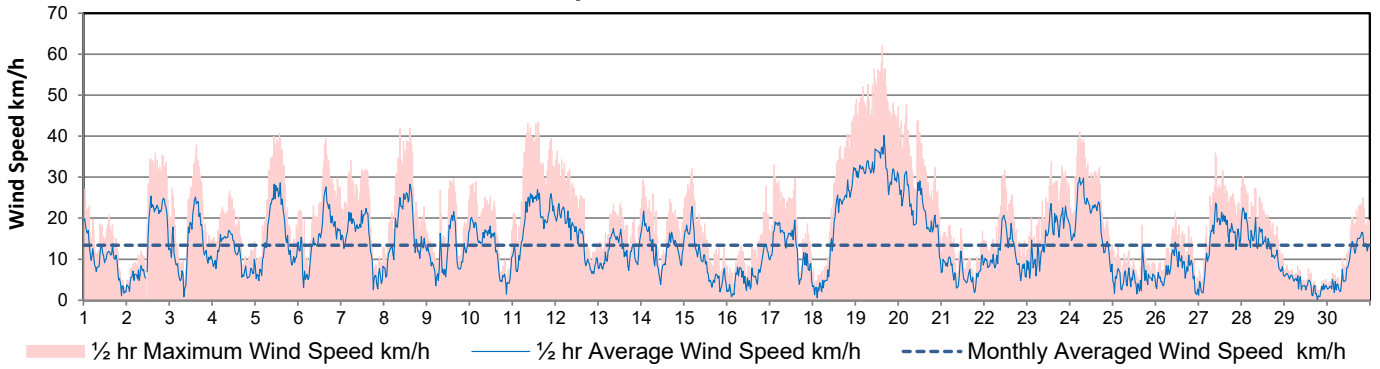


Agriculture and Agri-Food Canada

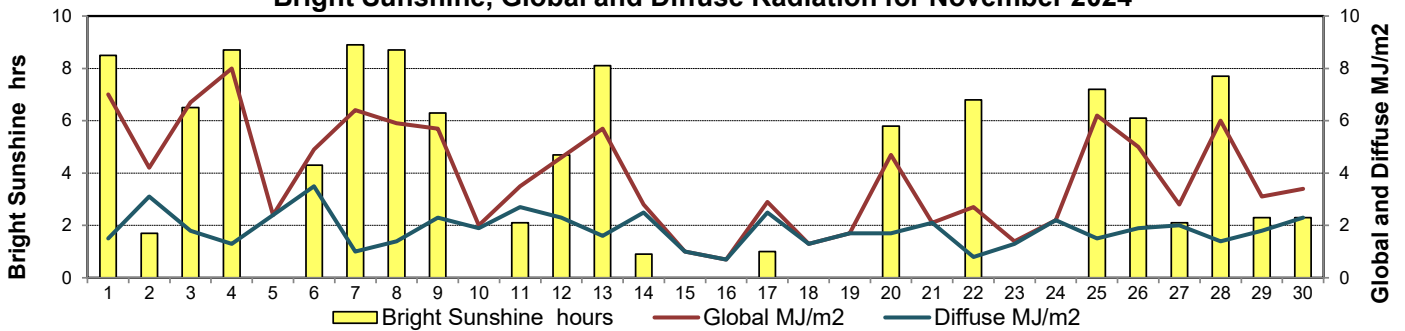
Agriculture et Agroalimentaire Canada



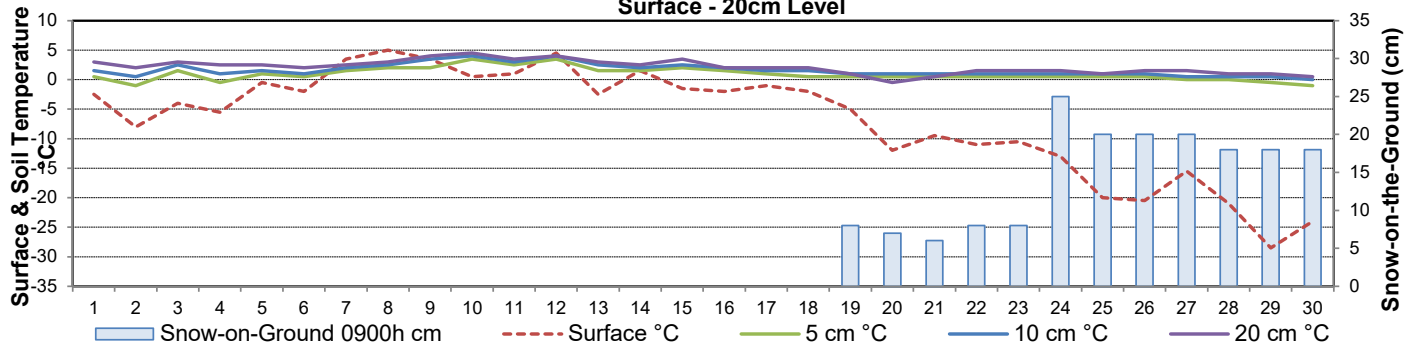
**Wind Speed for November 2024**



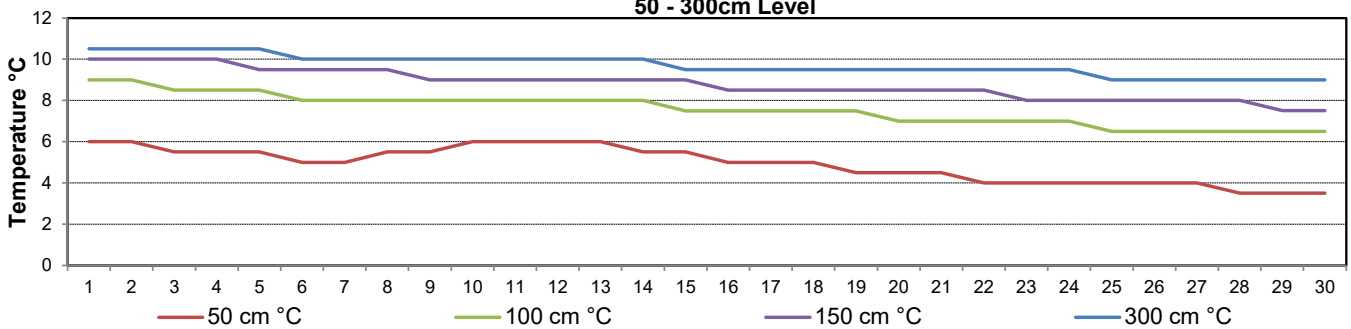
**Bright Sunshine, Global and Diffuse Radiation for November 2024**



**Soil Temperatures for November 2023**  
Surface - 20cm Level



**Soil Temperatures for November 2024**  
50 - 300cm Level





SRC CLIMATE REFERENCE STATION DAILY DATA REPORT

SASKATOON STATION 4057180

52°09' N 106°36' W 497 m asl Estab. 1963

Preliminary NOVEMBER 2024

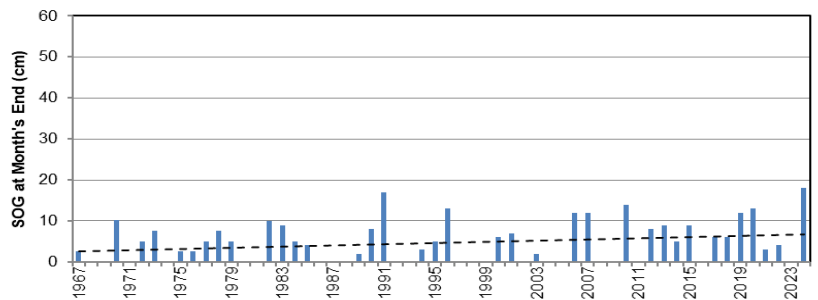
Extreme Records for November

Max/Min Temperature °C				Precipitation - Monthly mm						Wind Monthly km/h				CRS Bright Sunshine - Monthly			
S'toon Area	Date	Site	S'toon CRS	Date	S'toon Area	Date	Site	S'toon CRS	Date	S'toon Airport	Date	S'toon CRS**	Date	Hours	Year	No. of Days	Year
21.7	03/1903	SE	20.0	06/2016	57.3	1940	SE	48.2	1973	100 <sup>W</sup>	17/1976	101	1976	188.5	1976	30	1976
-39.4	30/1893	SM	-33.5	24/1985	0.0	2002*	SWT*	0.4	2009					37.2	1972	10	1972

\*\*1975 forward \* more than one year

Notable Events for CRS Saskatoon - November						Saskatoon Area Stations			Glossary	
Element	Type	Day	New Record	Old Record	Year (day)	Station	Operational Period	Code	Description	
Temperature	Highest Maximum Daily	8	15.8	15.5	2016	SM NWMP	c. 1892-1901	T	Trace of precipitation	
		11	1.2	0.5	1987	SE Eby	1901-1941	Normal	30 year average beginning with the decade	
	Highest Minimum Daily	8	2.3	2.3	2016	US Univ. of Sask.	1915-1964	SOG	Depth of snow-on-the-ground in cm	
Growing Degree-days	Highest Daily	8	4.1	3.9	2016	S Saskatoon	1941-1942	na	not available	
		11	1.2	0.5	1987	SA Saskatoon A	1942 -	<b>Degree-days</b>		
Heating Degree-Days	Lowest Daily	8	8.9	9.1	2016	NRC Nat. Res. Council	1952-1966	Tm	Mean Temperature	
		8	9.1	8.9	1999	SRC Sask. Res. Council	1963-	Growing	(Tm-5°C); if Tm ≤ 5°C then GDD = 0	
Precipitation	Highest Daily Maximum	23	6.1	1.4	2006	SWT S'toon Water Treatment Plant	1974 -	Heating	(18°C-Tm); if Tm ≤ 18°C then HDD = 0	
		24	7.1	4.8	1970	SC S'toon Central Ave	1974-1989	Cooling	(Tm-18°C); if Tm ≥ 18°C then CDD = 0	
End of Month Snow Depth (November)	-highest end of month snow depth (1967-2024)	1967	0	0		S1 Saskatoon 1	1976-1978	Extreme Cooling	(Tm-24°C); if Tm ≥ 24°C then CDD = 0	
		1970	4.8	1.4	1970	S2 Saskatoon 2	1977-1990			
		1973	0.4	0.4	2009	K S'toon Kernen Farm	1993-2004			
		1996	7.1	4.8	1970	KCS S'toon Kernen Farm CS	1996-			
		2008	6.1	1.4	2006	RCS Environment Canada	2008-			

- fourth highest precipitation amount for November
- Autumn 2024 13th highest precipitation (79.6mm)
- Autumn 2024 fourth highest Maximum Average Temperature
- Autumn 2024 fifth highest Minimum Average Temperature
- Autumn 2024 third highest Mean Average Temperature



SRC proudly recognizes the following CRS supporters:





**SRC CLIMATE REFERENCE STATION DAILY DATA REPORT**

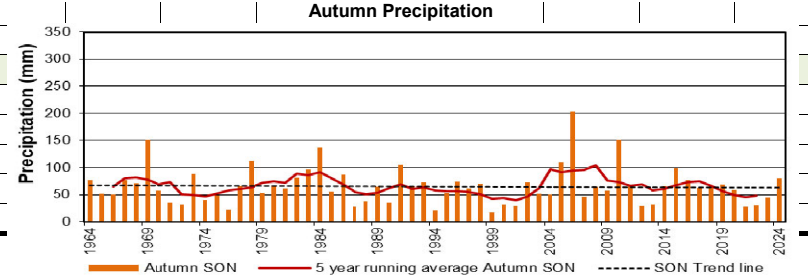
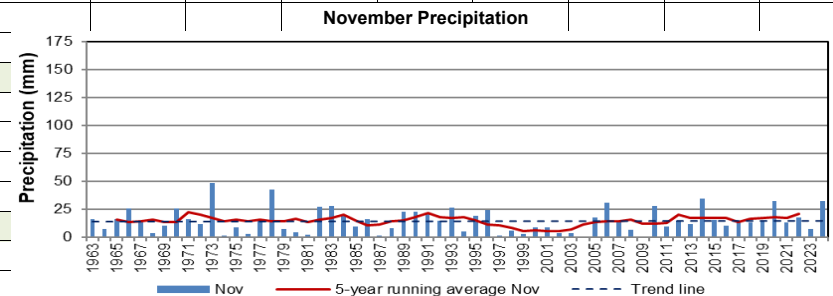
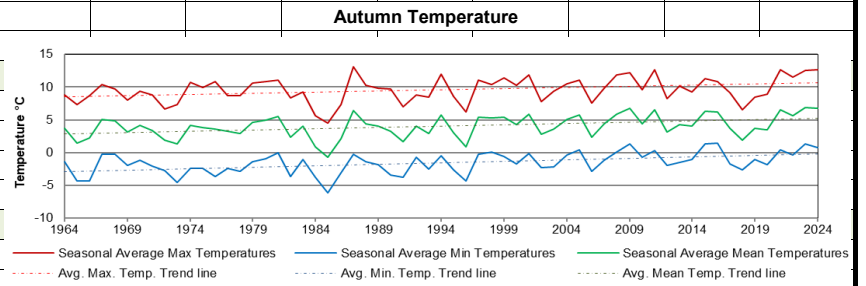
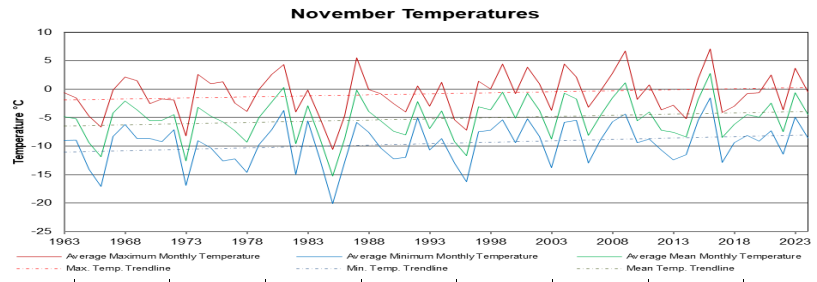
**SASKATOON STATION 4057180**

52°09' N 106°36' W 497 m asl Estab. 1963

Preliminary **November 2024**

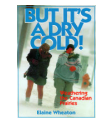
Day	2 meter Wind Speed			Soil Moisture at 0900 hrs (rounded to the 0.5%)		
	Daily Average	Max ½ hr Avg	½ hr Extreme Max	10 cm	20 cm	50 cm
	km/h	km/h	km/h	% by volume (soil type is Loam (45.5% Sand, 41.1% Silt, 13.3% Clay))		
1	6.0	13.6	24	4.0		9.5
2	10.0	18.6	30	4.0		9.0
3	9.0	17.9	29	3.5		9.5
4	7.0	13.1	21	3.5		9.5
5	10.0	19.7	33	4.0		9.5
6	11.0	20.5	32	3.5		9.5
7	9.0	16.2	25	4.0		10.0
8	10.0	20.0	34	4.0		9.5
9	5.0	15.3	25	4.0		9.5
10	8.0	14.5	25	3.5		9.5
11	11.0	16.1	34	4.0		9.5
12	9.0	15.8	28	4.5		9.5
13	7.0	13.4	20	4.0		9.5
14	9.0	16.3	24	3.5		9.5
15	7.0	16.1	26	4.0		9.5
16	4.0	9.6	21	4.0		9.5
17	7.0	14.6	22	4.0		9.5
18	10.0	23.2	35	4.0		9.5
19	24.0	30.3	47	4.0		9.0
20	17.0	24.2	37	4.0		9.0
21	6.0	9.8	15	4.0		9.0
22	9.0	15.5	25	4.5		9.0
23	12.0	18.6	28	4.0		9.5
24	16.0	24.0	34	4.0		9.0
25	4.0	10.8	15	4.0		9.5
26	6.0	9.4	15	4.0		9.0
27	12.0	18.9	31	4.0		9.5
28	12.0	18.3	26	4.5		9.5
29	3.0	6.0	7	4.5		9.0
30	7.0	14.1	22	4.0		9.0
Total						
Mean				4	#DIV/0!	9.4
Extreme	24.0	30.3	47.1	4.5	0	10
Date	19	19	19	12	#N/A	7

NOTE: 20 cm soil moisture probe was replaced Oct 28 2024. It should be valid by spring melt 2025.



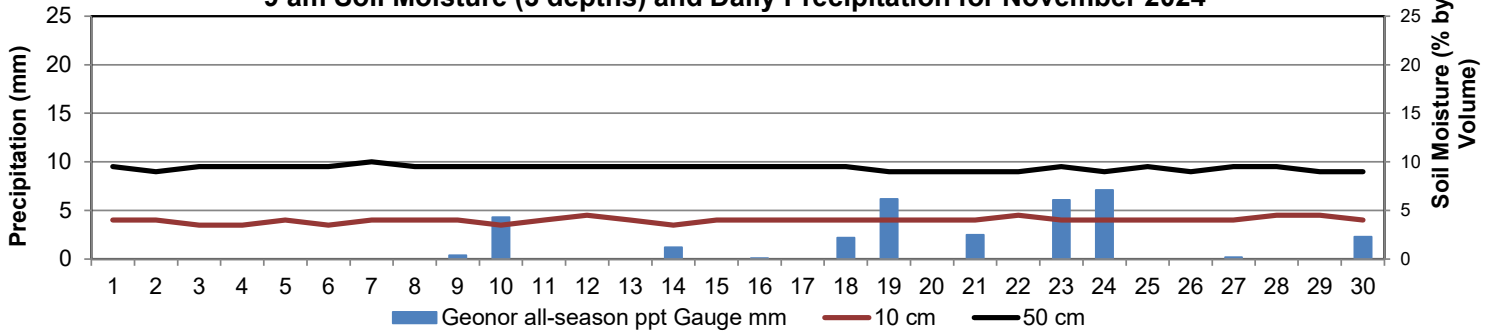
Note: Red numbers indicate manual calculation; Red cell indicate data not available

**SRC proudly recognizes the following CRS supporters:**

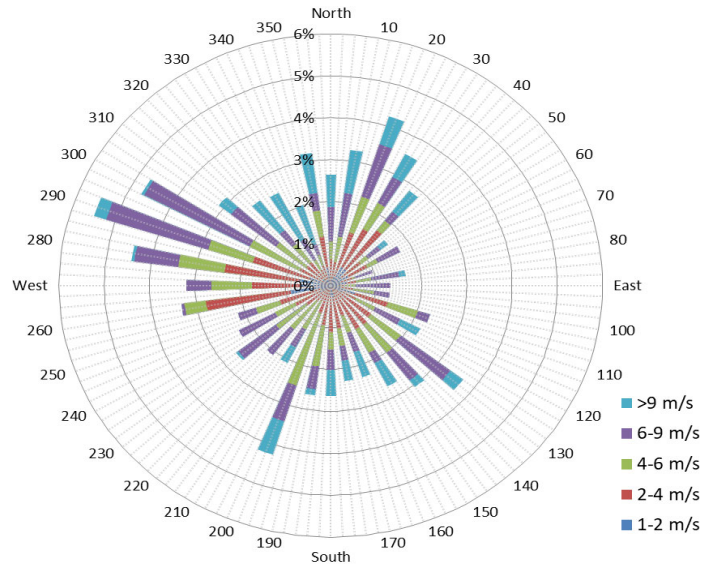




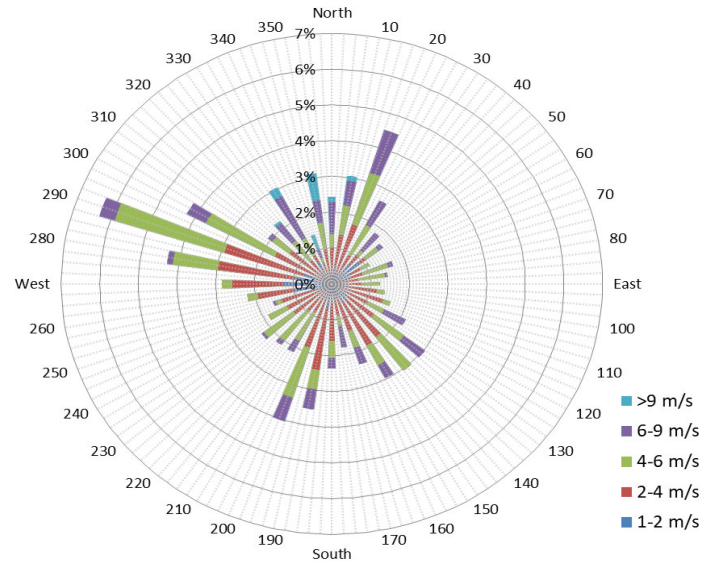
### 9 am Soil Moisture (3 depths) and Daily Precipitation for November 2024



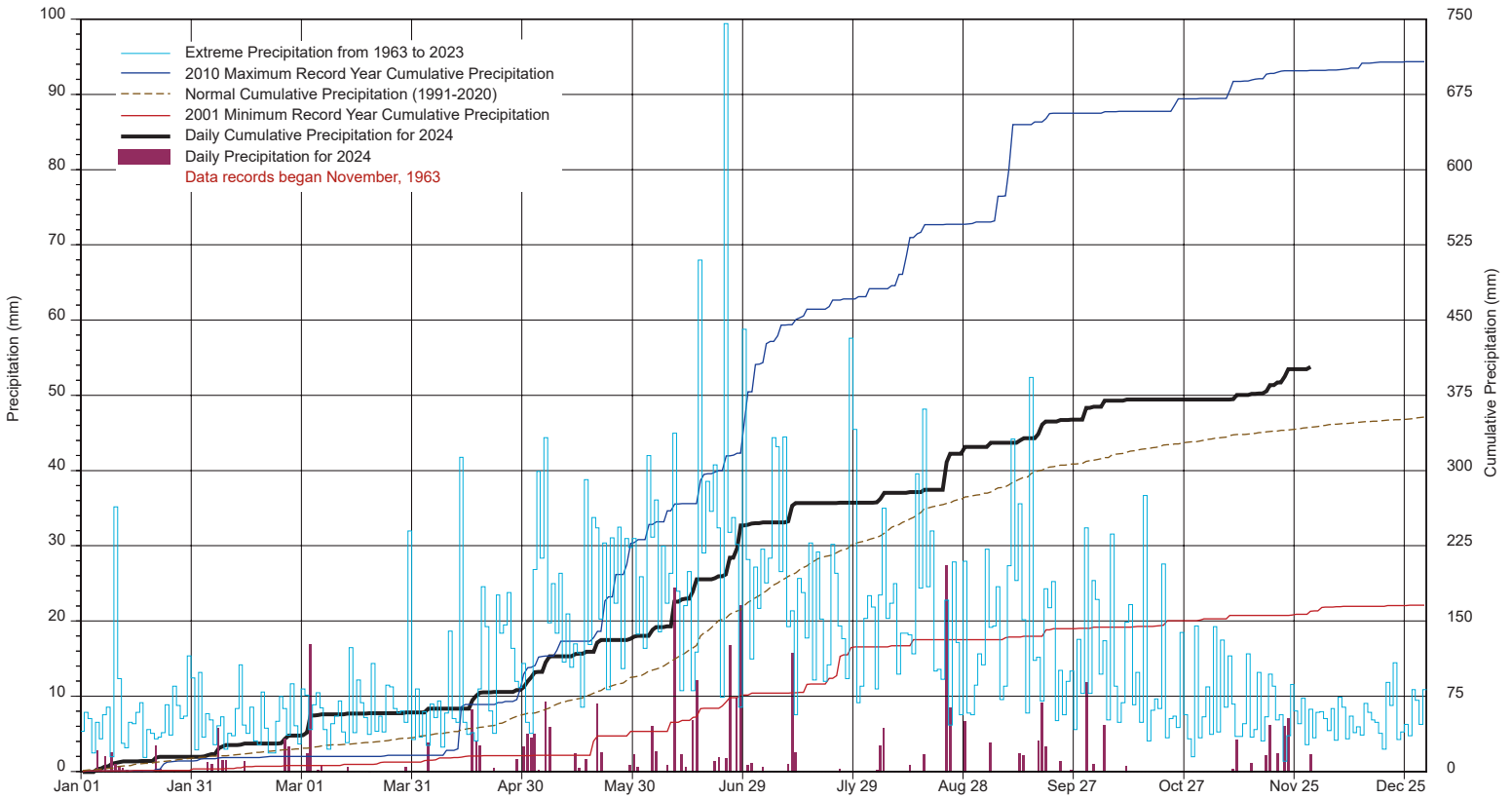
### 1/2 hr Maximum Wind Speed and Direction Saskatoon Nov 2024



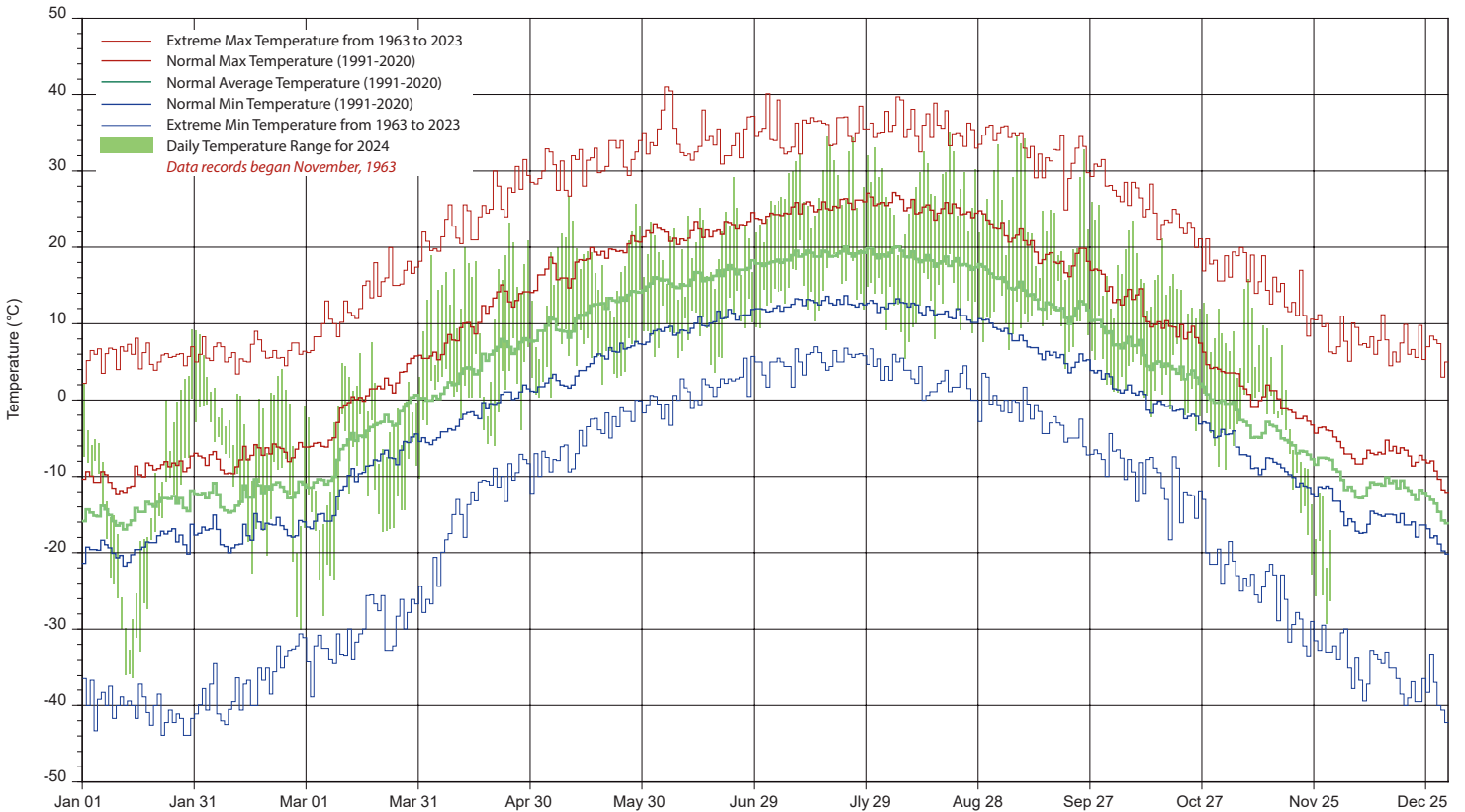
### 10 minute Average Wind Speed and Direction Saskatoon Nov 2024



# SASKATCHEWAN RESEARCH COUNCIL SASKATOON CLIMATE REFERENCE STATION 2024 PRECIPITATION AND NORMALS



## 2024 TEMPERATURES AND NORMALS



SRC proudly recongnizes the following CRS supporters:

