



SRC CLIMATE REFERENCE STATION DAILY DATA REPORT

SASKATOON STATION 4057180

52°09' N 106°36' W 497 m asl Estab. 1963

Preliminary MAY 2026

Day	Temperature						Degree-days			Precipitation			Relative Humidity		Station Pressure (sea level)	
	Max	Normal Max	Min	Normal Min	Mean	Normal Mean	Growing	Heating	Cooling	Geonor all-season ppt Gauge	Tipping Bucket	Notes	Max ½ hr Avg	Min ½ hr Avg	Max ½ hr Avg	Min ½ hr Avg
	°C	1991-2020	°C	1991-2020	°C	1991-2020	5°C base	18°C base	18°C base	mm	mm		%	%	mbar	mbar
1	24.9	14.4	4.5	1.1	14.7	7.8	9.7	3.3	0.0	0.0	0.0		53	15	1015	1009
2	20.7	16.4	4.2	1.8	12.5	9.1	7.5	5.5	0.0	0.1	0.0		79	16	1017	1010
3	22.2	16.4	4.5	1.8	13.4	9.1	8.4	4.6	0.0	0.1	0.0		68	20	1010	1001
4	6.6	17.2	0.0	2.3	3.3	9.8	0.0	14.7	0.0	0.0	0.0		77	35	1015	1008
5	8.7	18.7	-4.1	2.9	2.3	10.8	0.0	15.7	0.0	0.0	0.0		78	19	1018	1015
6	12.6	17.9	-4.5	3.4	4.1	10.6	0.0	13.9	0.0	0.0	0.0		77	18	1018	1010
7	18.2	15.8	-0.3	2.6	9.0	9.2	4.0	9.0	0.0	0.0	0.0		63	16	1011	1006
8	16.9	16.0	3.0	2.0	10.0	9.1	5.0	8.0	0.0	0.1	0.0		76	28	1013	1007
9	15.5	16.0	-2.1	1.9	6.7	9.0	1.7	11.3	0.0	0.0	0.0		72	17	1019	1013
10	21.8	14.7	1.0	1.6	11.4	8.2	6.4	6.6	0.0	0.0	0.0		68	18	1019	1007
11	22.2	15.9	11.6	2.0	16.9	9.0	11.9	1.1	0.0	0.0	0.0		51	22	1014	1002
12	24.8	18.1	5.9	3.2	15.4	10.7	10.4	2.6	0.0	0.0	0.0		67	13	1018	1014
13	29.0	18.4	9.9	3.9	19.5	11.2	14.5	0.0	1.5	0.0	0.0		41	11	1014	992
14	21.8	18.3	8.3	3.9	15.1	11.1	10.1	2.9	0.0	14.0	0.0		89	25	994	984
15	8.4	18.5	0.2	4.4	4.3	11.5	0.0	13.7	0.0	15.1	0.0		95	83	1011	995
16	4.8	20.0	-0.5	4.8	2.2	12.4	0.0	15.8	0.0	9.7	0.0		95	80	1014	1011
17	4.1	19.4	0.8	5.7	2.5	12.6	0.0	15.5	0.0	10.5	0.0		94	80	1019	1012
18	12.5	19.0	0.2	6.1	6.4	12.6	1.4	11.6	0.0	0.0	0.0		92	45	1020	1019
19	17.0	19.5	3.0	5.8	10.0	12.7	5.0	8.0	0.0	0.1	0.0		73	36	1019	1014
20	20.7	18.6	4.8	5.4	12.8	12.0	7.8	5.2	0.0	0.0	0.0		82	28	1015	1012
21	20.8	19.8	4.8	6.9	12.8	13.4	7.8	5.2	0.0	0.3	0.0		90	22	1016	1014
22	21.2	19.7	5.4	6.4	13.3	13.1	8.3	4.7	0.0	0.0	0.0		91	24	1015	1011
23	23.9	19.5	8.0	6.3	16.0	12.9	11.0	2.0	0.0	0.0	0.0		84	24	1011	1005
24	27.7	19.6	11.2	7.5	19.5	13.5	14.5	0.0	1.5	0.1	0.0		59	21	1009	1003
25	28.1	19.3	9.1	6.7	18.6	13.1	13.6	0.0	0.6	0.0	9.1		72	16	1011	1006
26	31.3	20.5	15.4	6.9	23.4	13.8	18.4	0.0	5.4	0.0	0.0		56	19	1013	1007
27	32.3	21.5	16.3	7.1	24.3	14.3	19.3	0.0	6.3	0.0	0.0	few drops	45	22	1014	1009
28	36.1	20.8	21.4	7.7	28.8	14.2	23.8	0.0	10.8	0.0	0.0		48	16	1009	1005
29	33.6	20.7	19.5	7.4	26.6	14.1	21.6	0.0	8.6	0.0	0.0		59	22	1006	1002
30	30.2	21.4	18.5	7.3	24.4	14.4	19.4	0.0	6.4	0.0	0.0	few drops	71	33	1011	1005
31	30.2	22.2	18.5	7.6	24.4	14.9	19.4	0.0	6.4	0.0	0.0		75	47	1011	1010
Total							280.9	180.9	47.5	50.1	9.1		Extreme / Date	Extreme / Date	Extreme / Date	Extreme / Date
Avg	20.9	18.5	6.4	4.7	13.7	11.6	1991-2020 Normal			37.6	1991-2020 Normal					
Extreme Date	36.1		-4.5				211.0	204.0	6.1	91.3	Year to date Cumulative		95	11	1020	984
	28		6							94.4	Year to date Cumulative Normal		15	13	18	14

Note: Red numbers indicate manual calculation; Red cell indicate data not available

Precipitation is measured precipitation. It has not been corrected for wind speed.

SRC proudly recognizes the following CRS supporters:

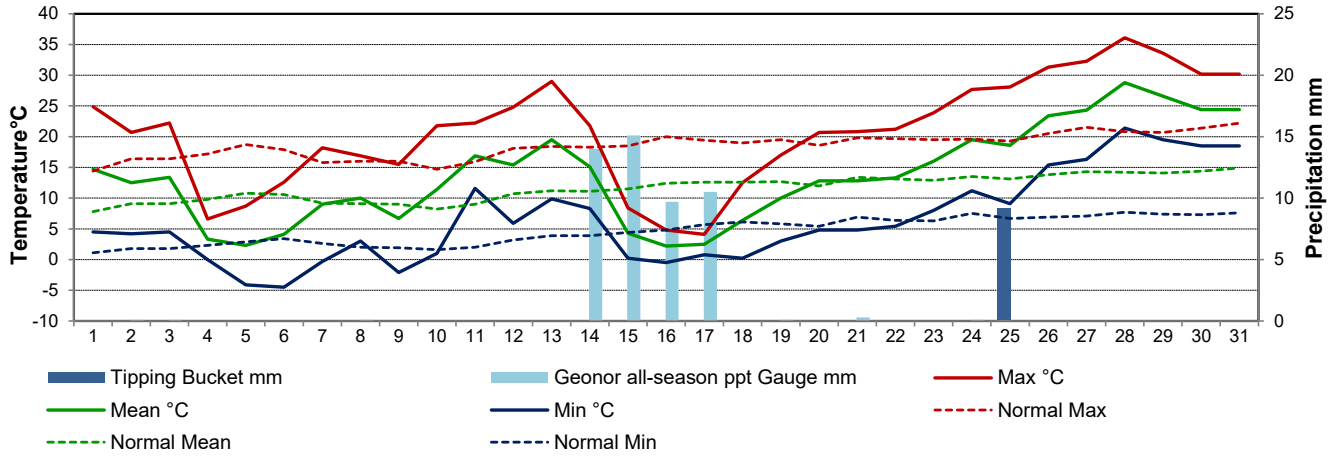


Agriculture and Agri-Food Canada

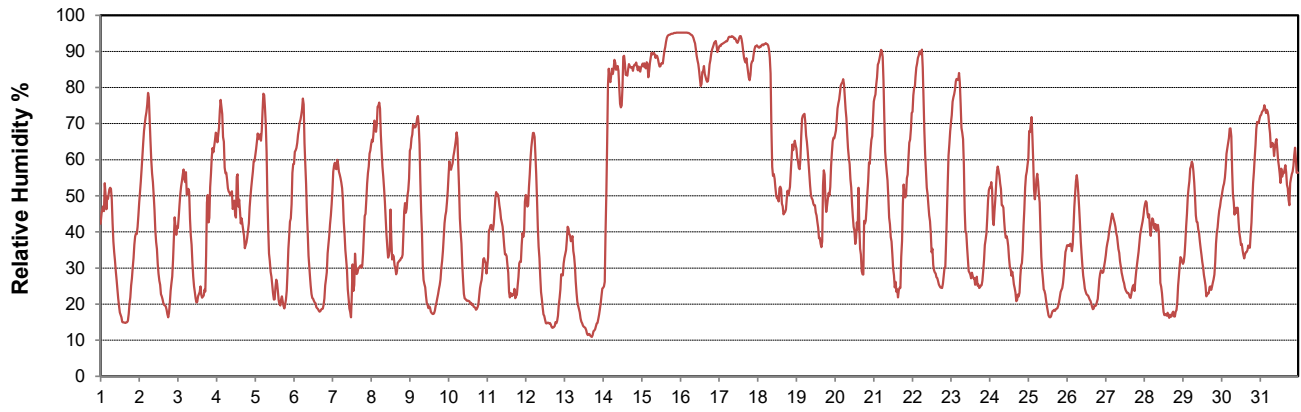
Agriculture et Agroalimentaire Canada



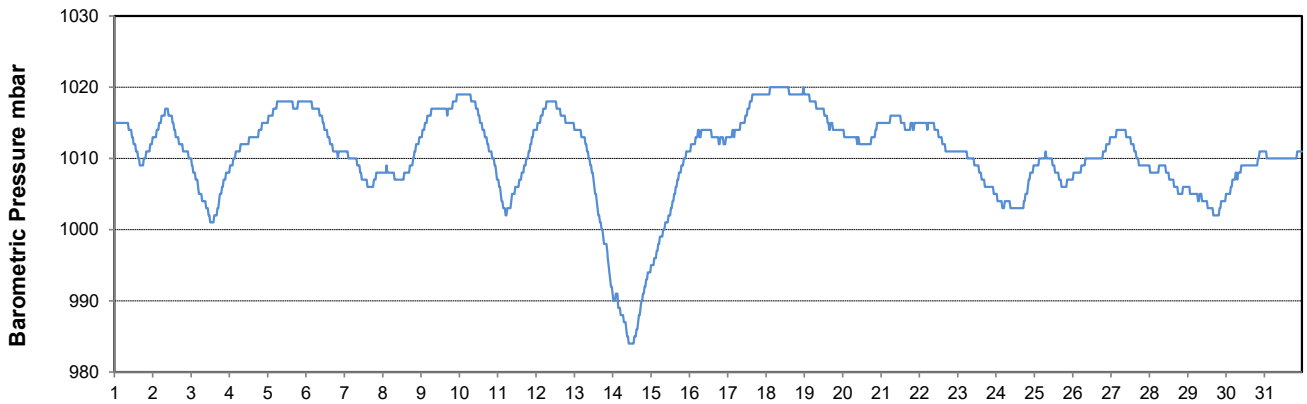
### Temperature and Precipitation for May 2026



### Relative Humidity for May 2026



### Barometric Pressure Corrected to Sea Level for May 2026





**SRC CLIMATE REFERENCE STATION DAILY DATA REPORT**

**SASKATOON STATION 4057180**

52°09' N 106°36' W 497 m asl Estab. 1963

Preliminary **MAY 2026**

Day	10 m tower Wind Gust			Wind Speed (10 meters)	Soil Temperatures at 0900hrs (rounded to the nearest 0.5C)								Radiation				
	Max	Direction	Time	Daily Average	Surface	5 cm	10 cm	20 cm	50 cm	100 cm	150 cm	300 cm	Bright Sunshine	Possible	% Possible	Global	Diffuse
	km/h			km/h	°C	°C	°C	°C	°C	°C	°C	°C	hours	hours		MJ/m <sup>2</sup>	MJ/m <sup>2</sup>
1	55.3	NW	18:31	15.8	11.5	6.5	7.0	6.5	4.5	3.0	4.0	4.0	10.5	15.0	70.2	22.2	5.6
2	39.1	NW	15:48	12.5	12.0	8.0	8.5	8.0	5.0	3.5	4.0	4.0	14.2	15.0	94.5	25.1	4.4
3	70.3	NNW	16:12	25.7	13.5	8.5	9.0	8.5	6.0	3.5	4.0	4.0	3.8	15.1	25.2	12.9	10.1
4	49.6	S	14:14	25.6	3.0	6.0	6.5	7.5	6.0	4.0	4.0	4.0	0.9	15.1	5.9	9.8	8.3
5	45.8	N	11:33	19.2	3.0	3.0	4.0	5.5	5.5	4.0	4.5	4.0	14.7	15.2	96.8	26.9	3.2
6	30.9	NNW	14:29	6.7	6.0	3.0	4.0	5.0	5.5	4.5	4.5	4.0	14.4	15.3	94.4	26.9	3.3
7	31.1	NNE	17:21	10.8	8.5	5.0	5.5	6.0	5.5	4.5	4.5	4.0	8.0	15.3	52.3	16.4	10.4
8	44.4	NNE	16:55	13.8	12.0	6.5	6.5	7.0	5.5	4.5	4.5	4.0	12.3	15.4	80.1	20.6	6.5
9	35.5	NNE	16:38	12.2	9.5	5.5	6.0	7.0	6.0	4.5	4.5	4.0	14.8	15.4	96.0	26.4	3.9
10	47.8	SE	23:18	17.0	14.0	7.0	7.0	7.5	6.5	4.5	5.0	4.0	12.9	15.5	83.4	23.3	9.0
11	54.4	SE	1:01	20.6	15.0	10.0	10.0	9.5	6.5	5.0	5.0	4.0	7.4	15.5	47.6	18.4	7.8
12	43.1	WNW	23:10	12.7	17.5	9.5	10.0	10.0	7.5	5.0	5.0	4.0	14.0	15.6	89.9	26.7	4.8
13	63.9	ESE	13:25	21.3	22.0	11.0	11.0	11.0	8.0	5.0	5.0	4.0	10.4	15.6	66.5	22.3	7.4
14	61.8	WNW	16:57	27.0	11.5	13.0	13.5	12.5	8.5	5.5	5.5	4.0	0.6	15.7	3.8	6.3	5.4
15	48.7	NW	5:19	22.9	3.5	9.0	10.0	10.5	9.0	6.0	5.5	4.0	0.0	15.7	0.0	6.4	5.7
16	33.6	E	15:11	13.4	1.0	6.0	7.0	7.5	8.5	6.0	5.5	4.5	1.0	15.8	6.3	10.8	9.1
17	44.6	NNE	15:02	18.1	1.0	5.5	6.5	7.0	7.5	6.0	6.0	4.5	0.0	15.8	0.0	5.4	4.9
18	29.0	SE	23:28	6.9	7.0	5.0	5.5	6.0	7.0	6.0	6.0	4.5	7.1	15.9	44.7	21.4	11.0
19	45.6	S	12:40	17.2	11.5	7.0	7.5	8.0	7.0	6.0	6.0	4.5	11.8	15.9	74.1	23.2	5.5
20	40.3	SE	18:37	9.8	13.0	8.5	8.5	8.5	7.5	6.0	6.0	4.5	9.9	16.0	62.0	20.3	8.8
21	42.8	E	18:18	10.2	14.0	9.5	9.5	10.0	8.0	6.0	6.0	4.5	13.6	16.0	84.9	26.3	7.0
22	24.0	SE	23:04	6.6	14.5	10.0	10.5	10.5	8.5	6.0	6.0	4.5	13.9	16.1	86.5	27.3	5.6
23	35.6	SSW	18:33	11.0	17.0	12.0	12.0	11.5	9.0	6.5	6.5	4.5	12.4	16.1	77.0	25.4	8.8
24	47.1	NW	18:17	14.7	18.0	13.0	13.0	12.5	9.5	6.5	6.5	4.5	13.2	16.2	81.7	24.2	8.6
25	39.4	SE	14:38	18.0	18.0	13.5	13.5	13.5	10.0	7.0	6.5	4.5	12.7	16.2	78.4	27.5	5.2
26	54.8	ESE	23:33	29.3	21.5	14.5	14.5	14.5	10.5	7.0	6.5	5.0	13.9	16.2	85.6	28.3	4.4
27	57.2	ESE	0:06	31.6	21.5	16.0	16.0	15.5	11.5	7.5	7.0	5.0	12.7	16.3	78.1	26.2	8.1
28	51.2	SSE	15:25	18.2	22.5	17.5	17.5	16.5	12.0	8.0	7.0	5.0	11.3	16.3	69.3	24.6	6.3
29	49.8	ESE	16:45	22.7	25.0	18.5	18.0	18.0	12.5	8.0	7.5	5.0	13.1	16.4	80.1	25.9	7.0
30	46.3	ESE	19:38	20.5	22.0	19.0	19.0	19.0	13.5	8.5	7.5	5.0	11.8	16.4	72.0	24.0	9.8
31	46.3	ESE	19:38	21.5	23.0	19.5	19.0	19.5	14.0	9.0	8.0	5.0	11.8	16.4	71.9	10.5	8.8
Total													309.1	488.3	63.3	641.9	214.7
Mean				17.2	13.3	9.9	10.2	10.3	8.1	5.7	5.6	4.4	1991-2020 Normal				
Extreme	70.3	NNW	16:12		1971- 2000 Normal for Soil Temperatures								274.7	487.8	56.3	634.1	214.0
Date	3				10.3	10.8	11.3	9.3	6.4	4.8	3.4	No. of Bright Sunshine days = 29					

Note: Red numbers indicate manual calculation; Red cell indicate data not available

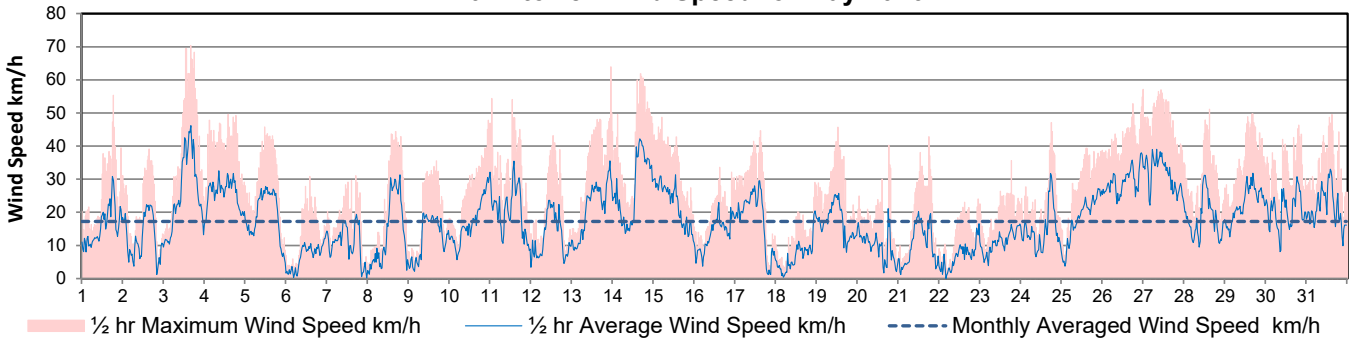
**SRC proudly recognizes the following CRS supporters:**



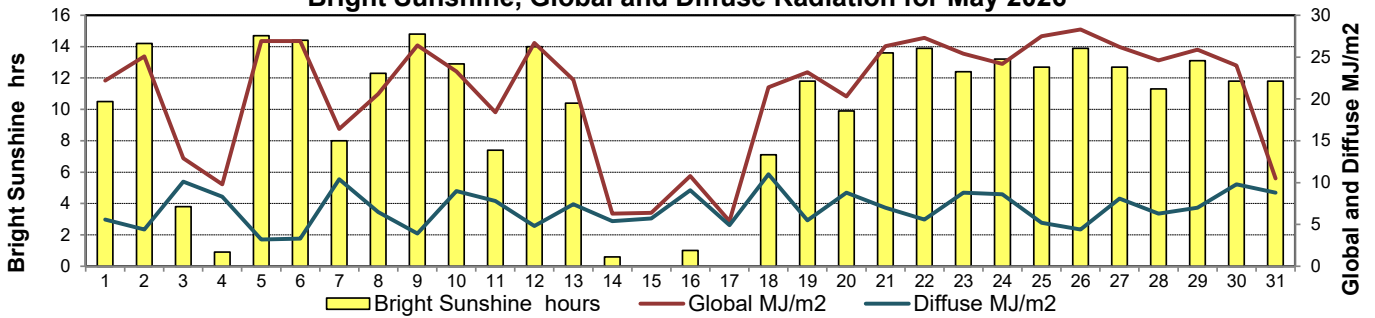
Agriculture and Agri-Food Canada / Agriculture et Agroalimentaire Canada



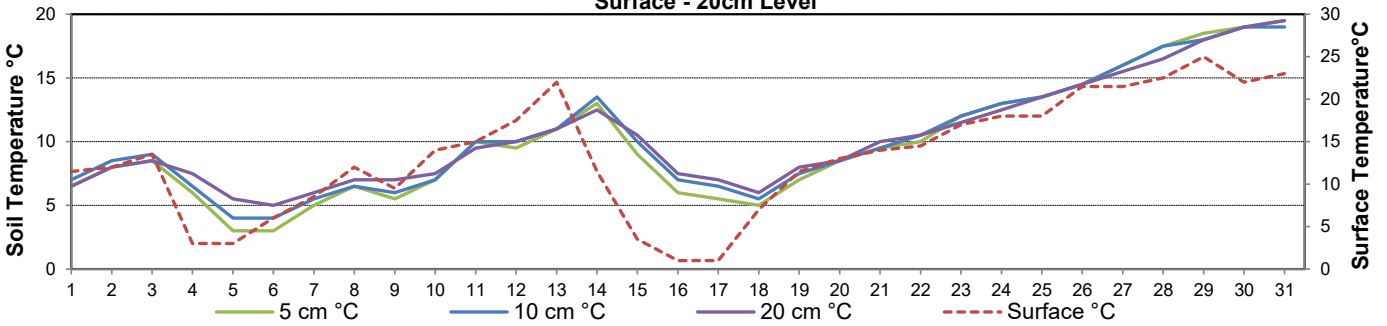
**10 m tower Wind Speed for May 2026**



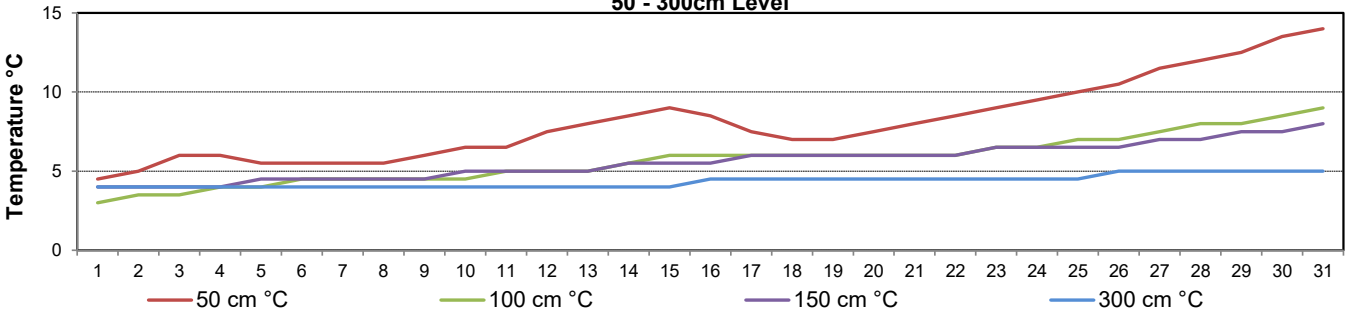
**Bright Sunshine, Global and Diffuse Radiation for May 2026**



**9 am Soil Temperatures for May 2026  
Surface - 20cm Level**



**9 am Soil Temperatures for May 2026  
50 - 300cm Level**





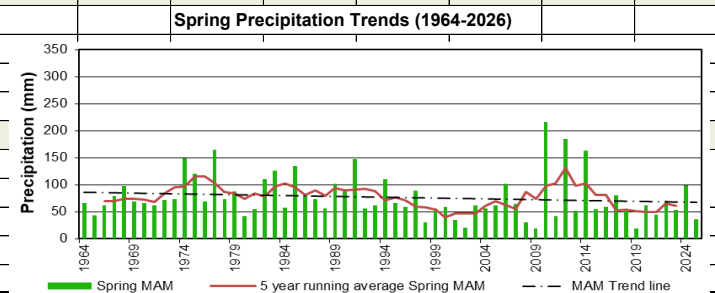
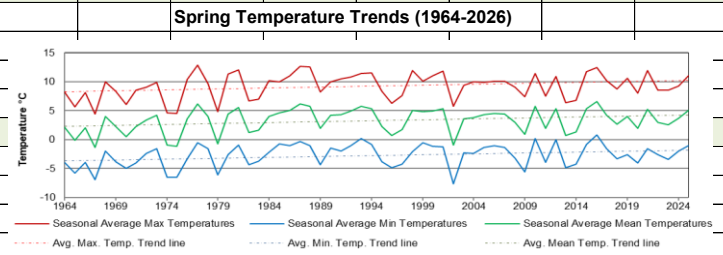
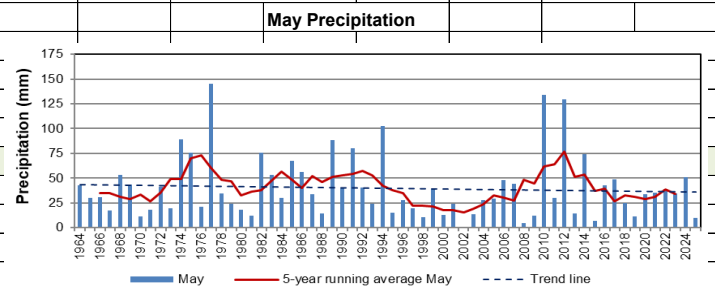
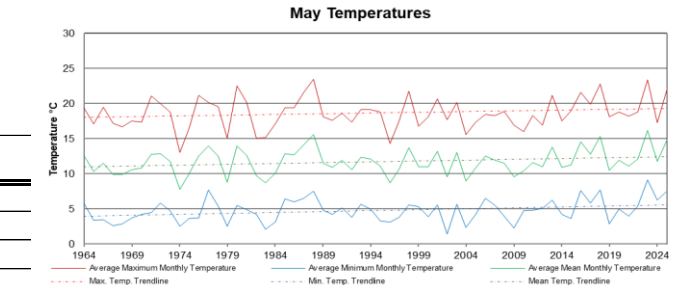
SRC CLIMATE REFERENCE STATION DAILY DATA REPORT

SASKATOON STATION 4057180

52°09' N 106°36' W 497 m asl Estab. 1963

Preliminary MAY 2026

Day	2 meter Wind Speed			Soil Moisture at 0900 hrs (rounded to the 0.5%)		
	Daily Average	Max ½ hr Avg	½ hr Extreme Max	10 cm	20 cm	50 cm
	km/h	km/h	km/h	% by volume (soil type is Loam (45.5% Sand, 41.1% Silt, 13.3% Clay))		
1	12.0	23.1	37.9	22.5	3.0	27.0
2	9.0	17.8	31.0	21.5	3.0	27.0
3	19.0	34.4	56.9	21.0	3.0	27.0
4	19.0	24.6	43.7	20.5	3.0	27.0
5	14.0	22.0	37.9	20.0	3.0	27.0
6	6.0	9.6	27.5	19.5	3.0	26.5
7	8.0	14.7	27.0	19.5	3.0	26.5
8	10.0	22.2	34.4	19.5	3.0	26.5
9	9.0	16.1	30.4	19.0	3.0	26.0
10	11.0	22.1	36.2	19.0	3.0	26.0
11	15.0	26.0	41.9	18.5	3.0	26.5
12	9.0	18.9	35.0	18.5	3.0	26.5
13	14.0	26.4	43.1	18.0	3.0	26.0
14	20.0	31.7	50.0	18.0	3.0	26.0
15	17.0	23.3	37.9	25.0	3.0	26.5
16	8.0	16.9	26.4	29.0	3.0	26.5
17	14.0	22.1	35.6	31.5	3.5	28.0
18	5.0	14.0	24.1	28.5	3.0	29.0
19	11.0	16.4	35.0	25.5	3.0	28.0
20	7.0	14.5	32.1	24.0	3.0	28.0
21	7.0	16.2	34.4	23.5	3.0	27.5
22	5.0	10.9	19.5	22.0	3.0	27.5
23	8.0	12.3	32.7	21.5	3.0	27.5
24	11.0	24.3	37.9	21.0	3.0	27.0
25	13.0	20.5	32.7	20.0	3.0	27.5
26	22.0	28.4	44.2	19.0	3.0	27.0
27	23.0	28.8	47.1	17.5	3.0	27.0
28	12.0	22.7	37.9	17.5	3.0	26.5
29	15.0	22.8	41.9	16.0	2.5	26.5
30	15.0	21.8	41.4	14.5	2.5	26.5
31	16.0	25.0	40.0	13.0	2.5	26.0
Total						
Mean				21	3	26.9
Extreme	23.0	34.4	56.9	31.5	3.5	29
Date	27	3	3	17	17	18



Note: Red numbers indicate manual calculation; Red cell indicate data not available

SRC proudly recognizes the following CRS supporters:



9 am Soil Moisture (3 depths) and Daily Precipitation for May 2026

