



SRC CLIMATE REFERENCE STATION DAILY DATA REPORT

SASKATOON STATION 4057180

Saskatchewan 52°09' N 106°36' W 497 m asl Estab. 1963

Preliminary **AUGUST 2022**

Day	Temperature						Degree-days			Precipitation			Relative Humidity		Station Pressure (sea level)	
	Max	Normal Max	Min	Normal Min	Mean	Normal Mean	Growing	Heating	Cooling	Weighing Gauge	Tipping Bucket	Notes	Max ½ hr Avg	Min ½ hr Avg	Max ½ hr Avg	Min ½ hr Avg
	°C	1991-2020	°C	1991-2020	°C	1991-2020	5°C base	18°C base	18°C base	mm	mm		%	%	mbar	mbar
1	26.6	25.7	15.3	11.5	21.0	18.6	16.0	0.0	3.0	0.0	0.0		91	40	1013	1005
2	21.7	25.9	12.9	12.2	17.3	19.1	12.3	0.7	0.0	19.0	17.8	t-storm	93	63	1010	999
3	25.0	25.5	9.0	12.0	17.0	18.8	12.0	1.0	0.0	0.0	0.0		92	33	1013	1008
4	30.3	25.9	14.9	12.7	22.6	19.3	17.6	0.0	4.6	0.0	0.0		82	40	1008	999
5	18.3	27.2	11.3	12.7	14.8	20.0	9.8	3.2	0.0	0.0	0.0		79	56	1019	1004
6	23.7	26.8	8.3	13.3	16.0	20.1	11.0	2.0	0.0	0.0	0.0		86	27	1021	1015
7	29.8	26.3	14.8	12.8	22.3	19.6	17.3	0.0	4.3	0.0	0.0		69	25	1015	1012
8	32.9	24.8	14.2	12.7	23.6	18.8	18.6	0.0	5.6	0.0	0.0		78	19	1015	1008
9	25.6	25.2	11.4	12.2	18.5	18.7	13.5	0.0	0.5	0.0	0.0		78	25	1023	1015
10	23.6	26.3	12.3	12.7	18.0	19.5	13.0	0.0	0.0	0.0	0.0		79	41	1025	1020
11	26.6	24.4	15.9	12.5	21.3	18.5	16.3	0.0	3.3	0.0	0.0		80	36	1020	1015
12	32.3	24.6	12.8	11.5	22.6	18.1	17.6	0.0	4.6	0.0	0.0		91	29	1017	1015
13	33.4	25.3	14.5	11.2	24.0	18.3	19.0	0.0	6.0	2.2	2.0	t-storm	93	27	1016	1011
14	29.0	25.6	17.0	12.3	23.0	19.0	18.0	0.0	5.0	0.0	0.0		90	43	1015	1011
15	29.3	24.9	14.2	11.8	21.8	18.3	16.8	0.0	3.8	0.0	0.0		92	30	1017	1015
16	34.3	23.6	16.5	11.2	25.4	17.5	20.4	0.0	7.4	0.2	0.3	t-storm	85	16	1017	1013
17	27.8	24.5	18.0	11.3	22.9	17.9	17.9	0.0	4.9	0.5	0.5	t-storm	85	16	1019	1013
18	29.9	25.1	13.8	11.3	21.9	18.2	16.9	0.0	3.9	0.0	0.0		89	23	1020	1018
19	30.0	25.9	12.8	11.7	21.4	18.8	16.4	0.0	3.4	0.0	0.0		84	27	1020	1016
20	33.1	24.5	16.8	10.8	25.0	17.6	20.0	0.0	7.0	0.0	0.0		72	19	1016	1012
21	34.9	25.7	15.1	10.7	25.0	18.2	20.0	0.0	7.0	0.0	0.0		76	15	1016	1013
22	22.5	25.2	16.5	12.0	19.5	18.6	14.5	0.0	1.5	0.3	0.0	showers	90	70	1017	1015
23	27.7	24.3	13.1	11.1	20.4	17.7	15.4	0.0	2.4	0.0	0.0		94	26	1021	1017
24	27.2	24.4	11.5	11.1	19.4	17.8	14.4	0.0	1.4	2.4	2.5	showers	90	37	1023	1021
25	29.8	24.7	13.3	10.5	21.6	17.6	16.6	0.0	3.6	0.0	0.0		83	24	1021	1015
26	27.5	23.9	14.4	10.2	21.0	17.1	16.0	0.0	3.0	2.9	2.8	t-storm	82	41	1015	1001
27	30.3	24.5	16.2	10.2	23.3	17.4	18.3	0.0	5.3	6.2	6.4	t-storm	89	33	1001	993
28	20.7	24.8	13.8	10.7	17.3	17.8	12.3	0.7	0.0	0.0	0.0		86	47	1007	995
29	27.4	24.4	10.0	10.5	18.7	17.5	13.7	0.0	0.7	0.0	0.0		78	25	1014	1007
30	32.6	23.6	12.5	10.6	22.6	17.1	17.6	0.0	4.6	0.0	0.0		70	21	1017	1014
31	35.0	23.1	15.2	10.1	25.1	16.6	20.1	0.0	7.1	0.0	0.0		67	18	1016	1006
Total							499.3	7.6	103.9	33.7	32.3		Extreme / Date	Extreme / Date	Extreme / Date	Extreme / Date
Avg	28.3	25.1	13.8	11.6	21.1	18.3	1991-2020 Normal			46.4	Aug 1991-2020 Normal					
Extreme Date	35.0		8.3				413.0	41.6	51.6	223.5	Year to date 2022 Cumulative		94	15	1025	993
	31		6							274.8	Year to date Cumulative Normal		23	21	10	27

Note: Red numbers indicate manual calculation; Red cell indicate data not available

SRC proudly recognizes the following CRS supporters:

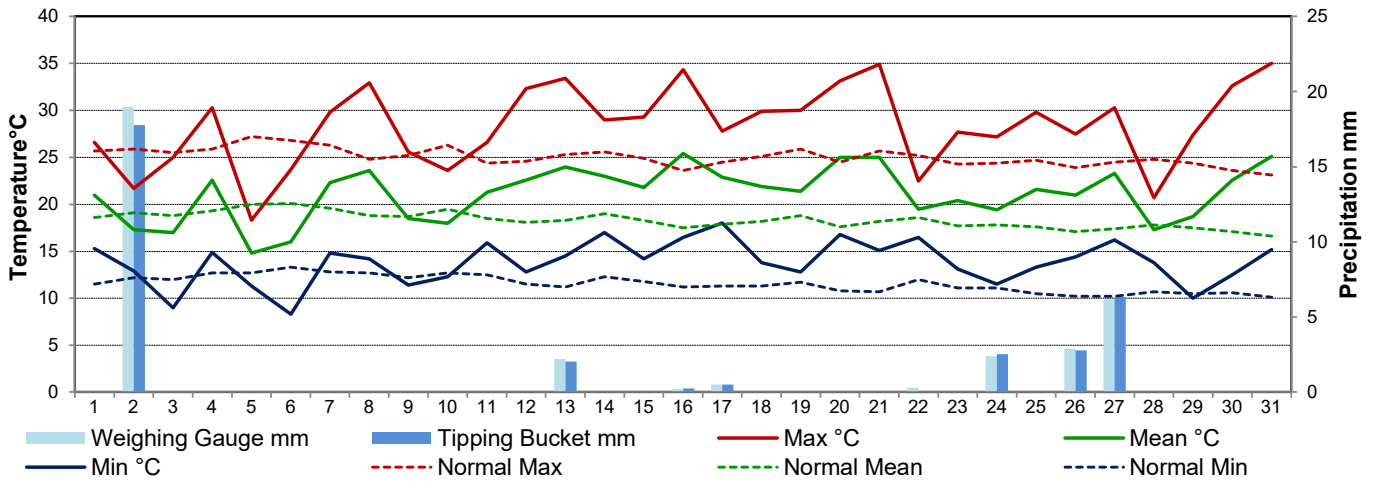


Agriculture and Agri-Food Canada

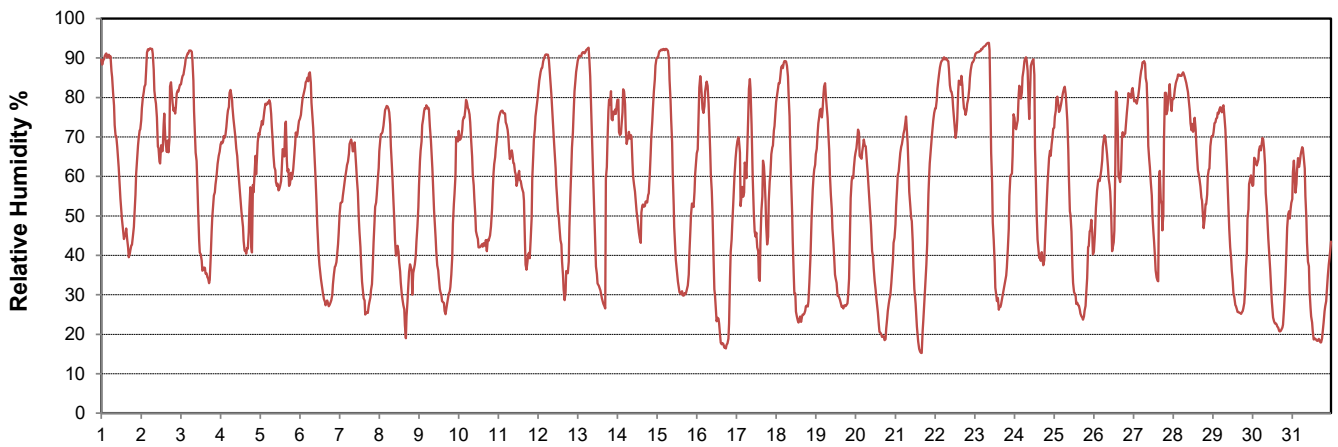
Agriculture et Agroalimentaire Canada



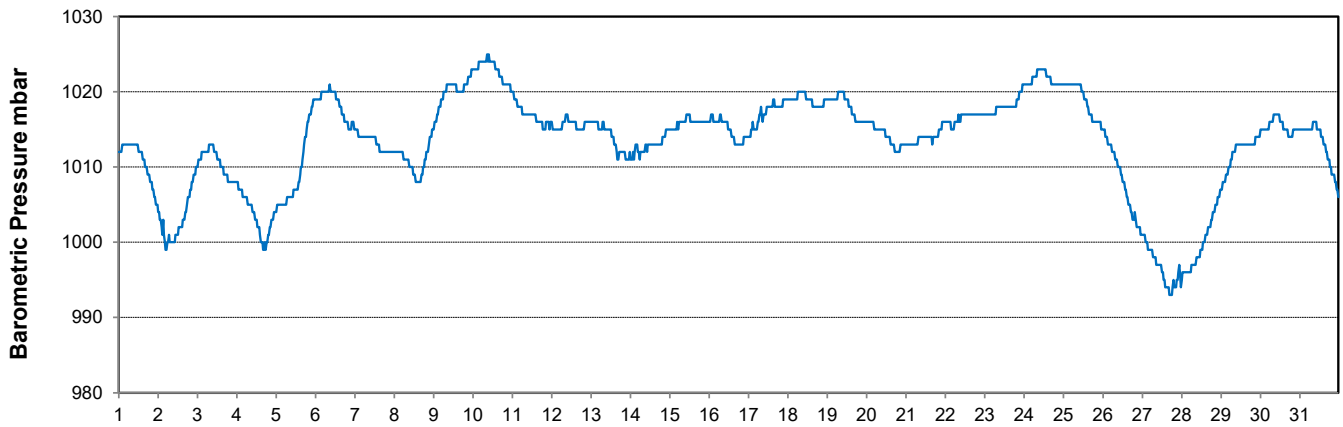
Temperature and Precipitation for August 2022



Relative Humidity for August 2022



Barometric Pressure Corrected to Sea Level for August 2022





SRC CLIMATE REFERENCE STATION DAILY DATA REPORT

SASKATOON STATION 4057180

Saskatchewan 52°09' N 106°36' W 497 m asl Estab. 1963

Preliminary **AUGUST 2022**

Day	Wind Gust (10 meters)			Wind Speed (10 meters) Daily Average	Soil Temperatures at 0900hrs								Radiation				
	Max	Direction	Time		Surface	5 cm	10 cm	20 cm	50 cm	100 cm	150 cm	300 cm	Bright Sunshine	Possible	% Possible	Global	Diffuse
	km/h				°C	°C	°C	°C	°C	°C	°C	°C	hours	hours		MJ/m ²	MJ/m ²
1	28.2	SE	20:08	12.6	19.0	19.0	19.5	19.5	17.5	15.5	13.0	9.5	11.5	15.5	74.3	22.1	7.8
2	55.3	WNW	14:10	22.6	18.0	18.5	19.0	19.5	18.0	15.5	13.0	9.5	4.4	15.4	28.5	12.3	9.4
3	30.9	ESE	23:32	12.0	16.0	15.5	16.5	17.5	17.5	15.5	13.0	9.5	11.0	15.4	71.6	20.7	9.0
4	45.6	WNW	20:10	19.2	19.0	17.5	18.0	18.0	17.0	15.5	13.0	9.5	11.8	15.3	77.1	22.3	5.1
5	63.0	WNW	15:06	24.2	15.5	17.5	18.5	19.0	17.5	15.5	13.0	10.0	5.8	15.3	38.0	12.1	9.3
6	34.6	SW	15:43	13.9	14.0	14.5	15.5	16.5	17.0	15.5	13.0	10.0	13.9	15.2	91.4	24.2	4.7
7	42.5	W	17:27	16.5	17.5	17.0	17.5	17.5	16.5	15.5	13.0	10.0	9.2	15.1	60.8	19.1	9.0
8	45.9	NW	17:38	14.2	22.0	17.5	18.0	18.5	17.0	15.5	13.0	10.0	14.1	15.1	93.4	23.5	4.6
9	37.5	WNW	11:07	13.7	17.5	17.5	18.5	19.5	17.5	15.5	13.0	10.0	14.6	15.0	97.1	25.6	3.0
10	34.1	ESE	19:22	16.3	17.5	17.5	18.5	19.0	17.5	15.5	13.0	10.0	6.7	15.0	44.8	13.4	9.9
11	39.0	SSE	18:01	14.4	19.0	18.5	18.5	18.5	17.5	15.5	13.0	10.0	4.2	14.9	28.2	9.1	5.6
12	27.4	NE	17:06	9.5	19.0	17.0	17.5	18.0	17.0	15.5	13.0	10.0	13.4	14.9	90.2	22.6	5.6
13	57.0	NNE	19:01	11.9	22.0	19.5	20.0	20.0	17.5	15.5	13.0	10.0	9.7	14.8	65.6	22.1	4.8
14	36.1	SE	6:14	13.2	20.0	19.5	20.0	20.5	18.0	15.5	13.0	10.0	11.7	14.7	79.4	22.5	4.8
15	24.7	N	17:49	8.6	19.0	19.0	20.0	20.5	18.0	15.5	13.0	10.0	13.5	14.7	92.0	23.2	3.8
16	35.1	SE	12:04	12.2	23.0	20.0	20.5	21.0	18.5	16.0	13.0	10.5	13.4	14.6	91.7	22.9	3.7
17	40.1	NE	8:32	11.5	18.5	21.5	22.0	21.5	18.5	16.0	13.5	10.5	8.2	14.6	56.4	16.5	5.1
18	33.3	N	13:31	9.7	20.0	18.5	19.5	20.5	18.5	16.0	13.5	10.5	13.2	14.5	91.2	22.0	4.3
19	29.2	ESE	21:19	7.3	21.0	18.5	19.5	20.0	18.5	16.0	13.5	10.5	13.9	14.4	96.4	22.6	3.3
20	27.0	S	8:27	12.3	22.5	20.0	21.0	21.0	18.5	16.0	13.5	10.5	12.5	14.4	87.0	20.9	4.4
21	38.6	NNE	18:02	10.2	22.0	19.5	20.5	21.0	19.0	16.0	13.5	10.5	12.6	14.3	88.1	21.0	4.4
22	30.3	NE	17:47	15.6	19.0	21.5	22.0	22.0	19.0	16.5	13.5	10.5	0.2	14.2	1.4	6.2	5.6
23	32.4	NE	16:52	10.9	16.0	19.0	19.5	20.0	19.0	16.5	13.5	10.5	10.9	14.2	76.9	20.3	4.8
24	20.4	NE	15:16	6.1	17.0	18.5	19.5	20.0	18.5	16.5	13.5	10.5	8.5	14.1	60.2	14.3	6.3
25	21.2	SSW	15:41	7.3	18.0	17.5	18.5	19.5	18.5	16.5	14.0	10.5	12.8	14.0	91.2	20.0	5.6
26	33.7	SE	16:57	12.1	21.0	17.5	18.5	19.5	18.0	16.5	14.0	10.5	7.5	14.0	53.6	12.6	7.2
27	55.6	SW	18:31	12.3	19.5	18.0	19.0	19.0	18.0	16.5	14.0	10.5	8.2	13.9	59.0	16.6	5.0
28	51.2	NW	14:40	20.0	17.0	18.5	19.0	19.0	18.0	16.5	14.0	11.0	0.6	13.9	4.3	5.4	4.9
29	46.7	NW	14:05	16.4	15.5	14.0	15.5	17.0	17.5	16.5	14.0	11.0	13.4	13.8	97.2	21.1	2.3
30	44.0	NW	14:18	11.4	18.0	15.0	16.0	17.0	17.0	16.0	14.0	11.0	13.2	13.7	96.2	20.4	2.4
31	30.9	SE	21:46	9.3	21.0	17.0	18.0	18.5	17.0	16.0	14.0	11.0	13.1	13.7	96.0	20.0	2.7
Total													317.7	452.4	70.2	577.6	168.4
Mean				13.1	18.8	18.1	18.8	19.3	17.8	15.9	13.4	10.3	1991-2020 Normal				
Extreme	63.0	WNW	15:06		1971- 2000 Normal for Soil Temperatures								276.9	452.3	61.2	542.2	172.5
Date	5				16.5	16.9	18.1	16.8	14.1	12.3	9.1	No. of Bright Sunshine days = 31					

Note: Red numbers indicate manual calculation; Red cell indicate data not available

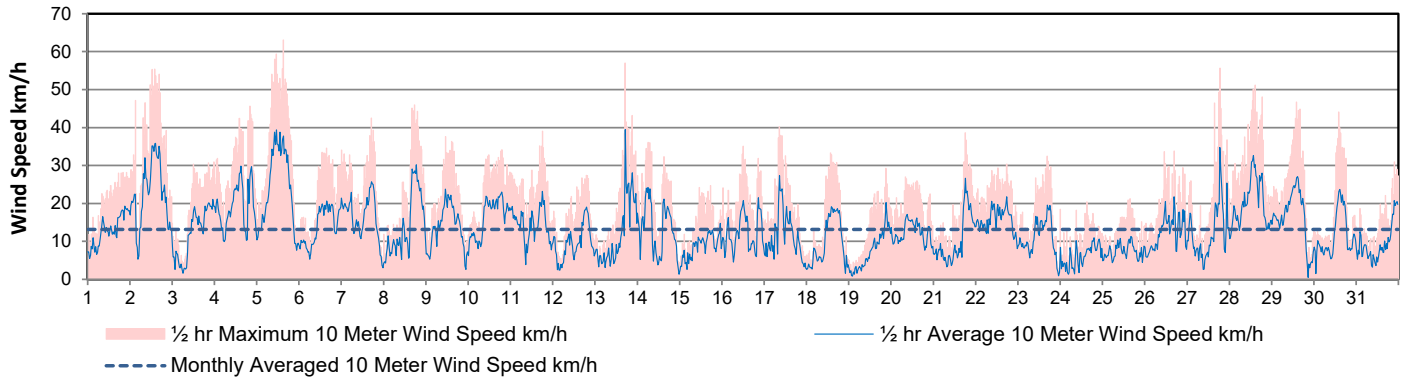
SRC proudly recognizes the following CRS supporters:



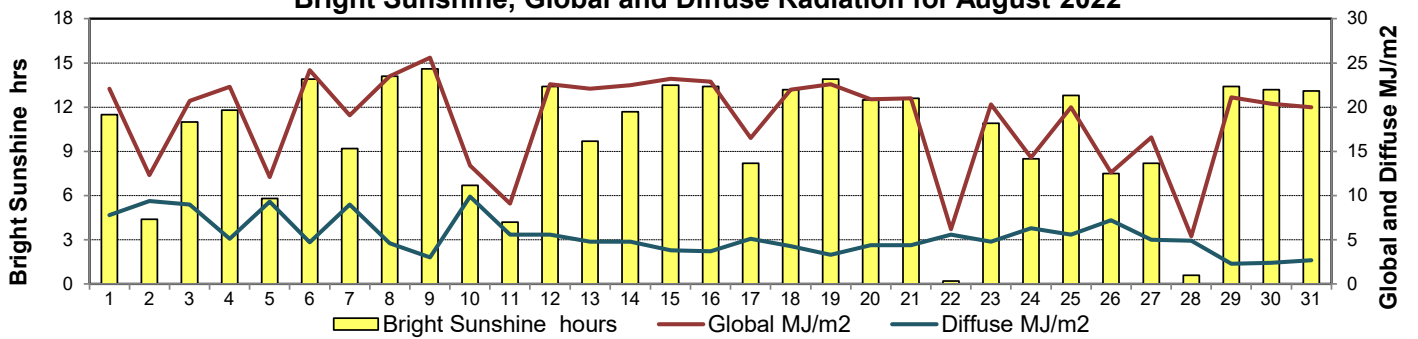
Agriculture and Agri-Food Canada / Agriculture et Agroalimentaire Canada



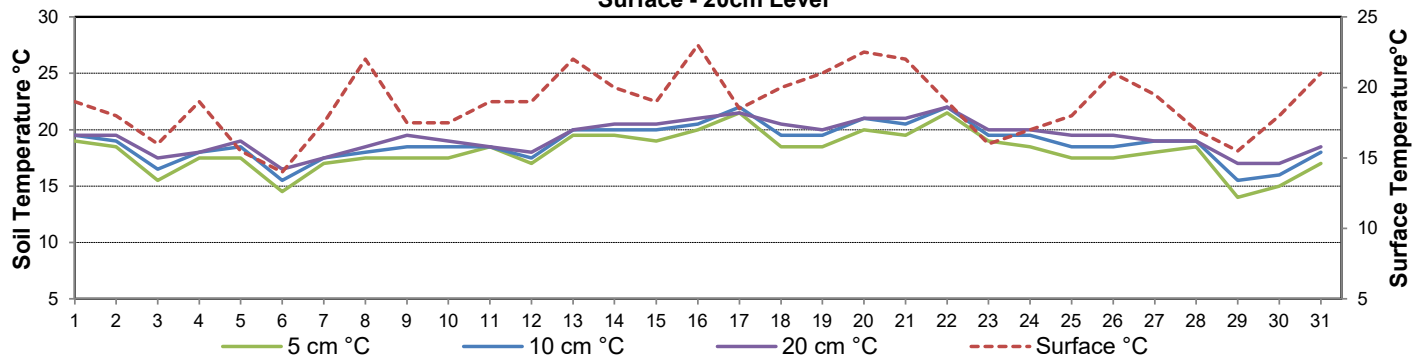
Wind Speed for August 2022



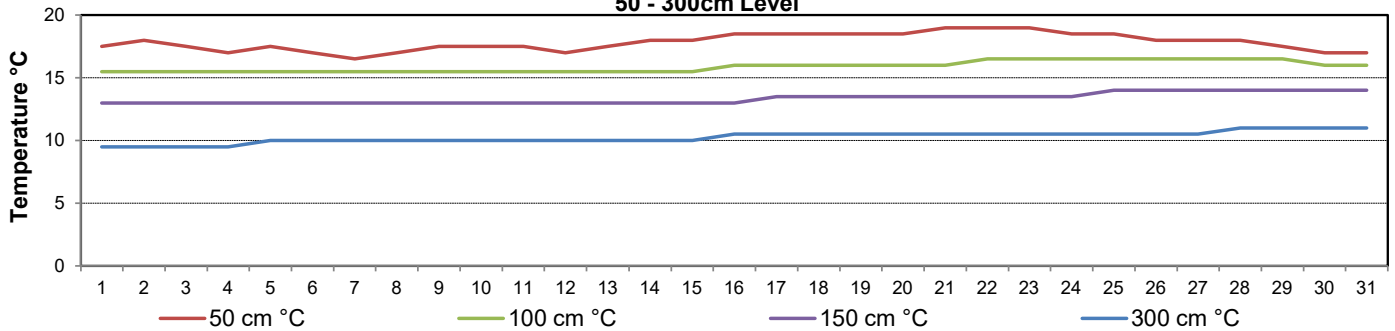
Bright Sunshine, Global and Diffuse Radiation for August 2022



**Soil Temperatures for August 2022
Surface - 20cm Level**



**Soil Temperatures for August 2022
50 - 300cm Level**





SRC CLIMATE REFERENCE STATION DAILY DATA REPORT

SASKATOON STATION 4057180

52°09' N 106°36' W 497 m asl Estab. 1963

Preliminary AUGUST 2022

Extreme Records for August

Max/Min Temperature °C				Precipitation - Monthly mm				Wind Monthly km/h				CRS Bright Sunshine - Monthly					
S'toon Area	Date	Site	S'toon CRS	Date	S'toon Area	Date	Site	S'toon CRS	Date	S'toon Airport	Date	S'toon CRS**	Date	Hours	Year	No. of Days	Year
39.7	06/1998	SRC	39.7	06/1998	229.8	1953	SF	105.2	2007	151 ^W	14/1967	129	1985	360.8	1969	31	1966*
-2.8	23/1901 28/1976	SM SRC	-2.8	28/1976	0.0	1986	SC	7.0	2001					200.8	1987	27	1992*

**1975 forward * more than one year

Notable Events for CRS Saskatoon - August						Saskatoon Area Stations			Glossary	
Element	Type	Day	New Record	Old Record	Year	SM	NWMP	c. 1892-1901	T	Trace of precipitation
Temperature	Highest Maximum Daily	21	34.9	34.4	1969	SE	Eby	1901-1941	Normal	30 year average beginning with the decade
	Highest Minimum Daily	27	18.0	17.9	2003	US	Univ. of Sask.	1915-1964	SOG	Depth of snow-on-the-ground in cm
	Highest Mean Daily	21	16.2	16.1	1997	S	Saskatoon	1941-1942	na	not available
	Number of days when Minimum Daily Temperature was >= to 10C		29	29	2017	SA	Saskatoon A	1942 -	Degree-days	
Growing Degree-days	Highest daily	21	20	19.7	1969	NRC	Nat. Res. Council	1952-1966	Tm	Mean Temperature
						SRC	Sask. Res. Council	1963-	Growing	(Tm-5°C); if Tm ≤ 5°C then GDD = 0
Cooling Degree-days	Highest daily	21	7.0	6.7	1969	SWT	S'toon Water Treatment Plant	1974 -	Heating	(18°C-Tm); if Tm ≤ 18°C then HDD = 0
						SC	S'toon Central Ave	1974-1989	Cooling	(Tm-18°C); if Tm ≥ 18°C then CDD = 0
Extreme CDD	Highest daily	21	1	0.7	1969	S1	Saskatoon 1	1976-1978	Extreme Cooling	(Tm-24°C); if Tm ≥ 24°C then CDD = 0
						S2	Saskatoon 2	1977-1990	August 2022: 6th highest average Maximum Monthly Temp 2nd highest average Minimum Monthly Temp 2nd highest average Mean Monthly Temp Summer (JJA) 2022: 6th highest Summer Maximum Average Temp 3rd highest Summer Minimum Average Temp 3rd highest Summer Mean Average Temp	
						K	S'toon Kernen Farm	1993-2004		
						KCS	S'toon Kernen Farm CS	1996-		
					RCS	Environment Canada	2008-			
					SF	Sutherland Forestry	1943-1970			

SRC proudly recognizes the following CRS supporters:





SRC CLIMATE REFERENCE STATION DAILY DATA REPORT

SASKATOON STATION 4057180

52°09' N 106°36' W 497 m asl Estab. 1963

Preliminary August 2022

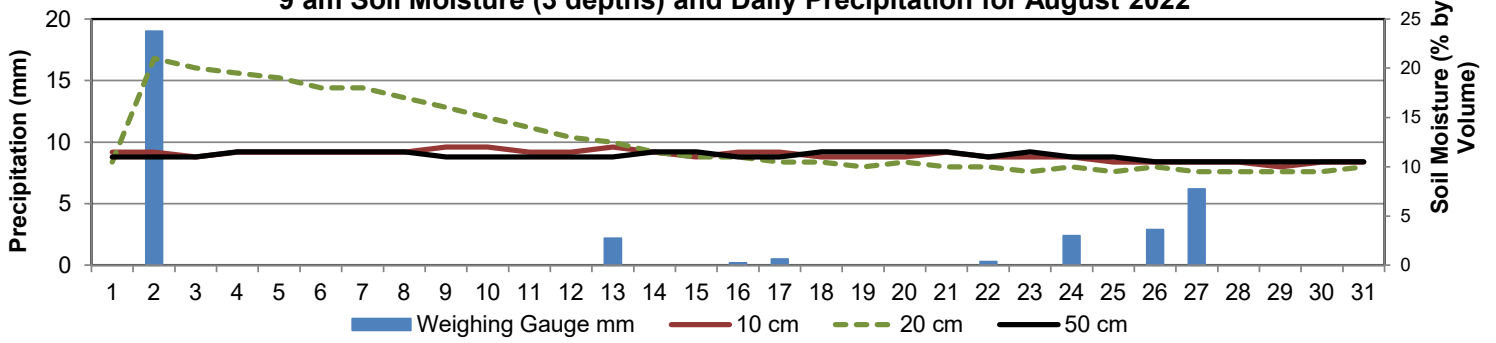
Day	2 meter Wind Speed			Soil Moisture at 0900 hrs (rounded to the 0.5%)																		
	Daily Average	Max ½ hr Avg	½ hr Extreme Max	10 cm	20 cm	50 cm																
	km/h	km/h	km/h	% by volume (soil type is Loam (45.5% Sand, 41.1% Silt, 13.3% Clay))																		
1	9.0	13.8	25.2	11.5	10.5	11.0																
2	16.0	25.3	39.6	11.5	21.0	11.0																
3	9.0	15.9	25.8	11.0	20.0	11.0																
4	14.0	22.8	33.3	11.5	19.5	11.5																
5	17.0	28.5	46.5	11.5	19.0	11.5																
6	10.0	16.6	27.5	11.5	18.0	11.5																
7	12.0	18.5	31.0	11.5	18.0	11.5																
8	10.0	20.7	34.4	11.5	17.0	11.5																
9	10.0	17.5	27.5	12.0	16.0	11.0																
10	12.0	17.3	27.5	12.0	15.0	11.0																
11	9.0	13.9	27.0	11.5	14.0	11.0																
12	6.0	13.3	23.5	11.5	13.0	11.0																
13	8.0	26.3	41.4	12.0	12.5	11.0																
14	9.0	17.1	32.7	11.5	11.5	11.5																
15	6.0	10.4	18.9	11.0	11.0	11.5																
16	9.0	15.7	31.0	11.5	11.0	11.0																
17	8.0	18.5	29.3	11.5	10.5	11.0																
18	6.0	14.3	25.8	11.0	10.5	11.5																
19	5.0	15.3	24.1	11.0	10.0	11.5																
20	8.0	13.0	24.1	11.0	10.5	11.5																
21	7.0	17.5	30.4	11.5	10.0	11.5																
22	11.0	14.4	23.5	11.0	10.0	11.0																
23	7.0	14.8	26.4	11.0	9.5	11.5																
24	4.0	8.1	18.9	11.0	10.0	11.0																
25	5.0	9.6	18.9	10.5	9.5	11.0																
26	8.0	16.1	32.1	10.5	10.0	10.5																
27	8.0	23.9	38.5	10.5	9.5	10.5																
28	14.0	22.6	39.1	10.5	9.5	10.5																
29	11.0	19.3	33.3	10.0	9.5	10.5																
30	8.0	17.7	32.7	10.5	9.5	10.5																
31	7.0	24.0	24.0	10.5	10.0	10.5																
Total																						
Mean				11	13	11.1																
Extreme	17.0	28.5	46.5	12	21	11.5																
Date	5	5	5	9	2	4																

Note: Red numbers indicate manual calculation; Red cell indicate data not available

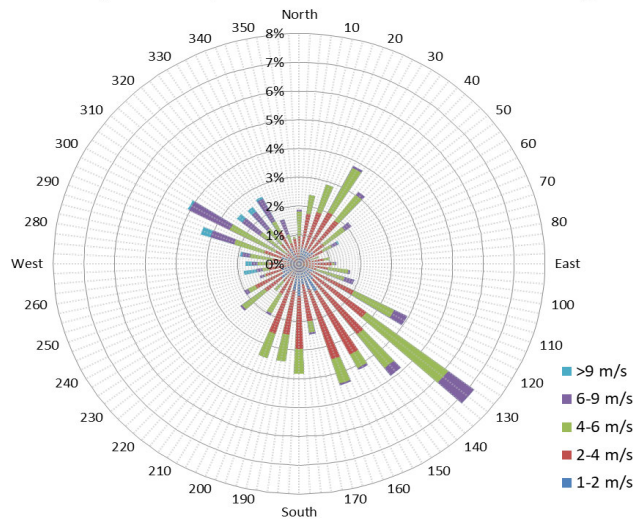
SRC proudly recognizes the following CRS supporters:



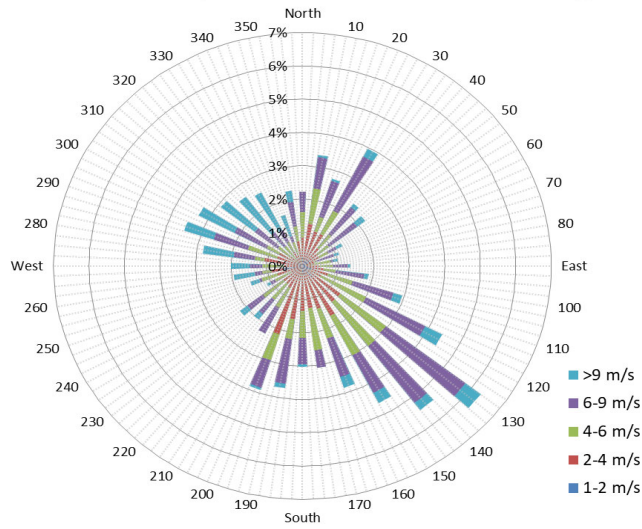
9 am Soil Moisture (3 depths) and Daily Precipitation for August 2022



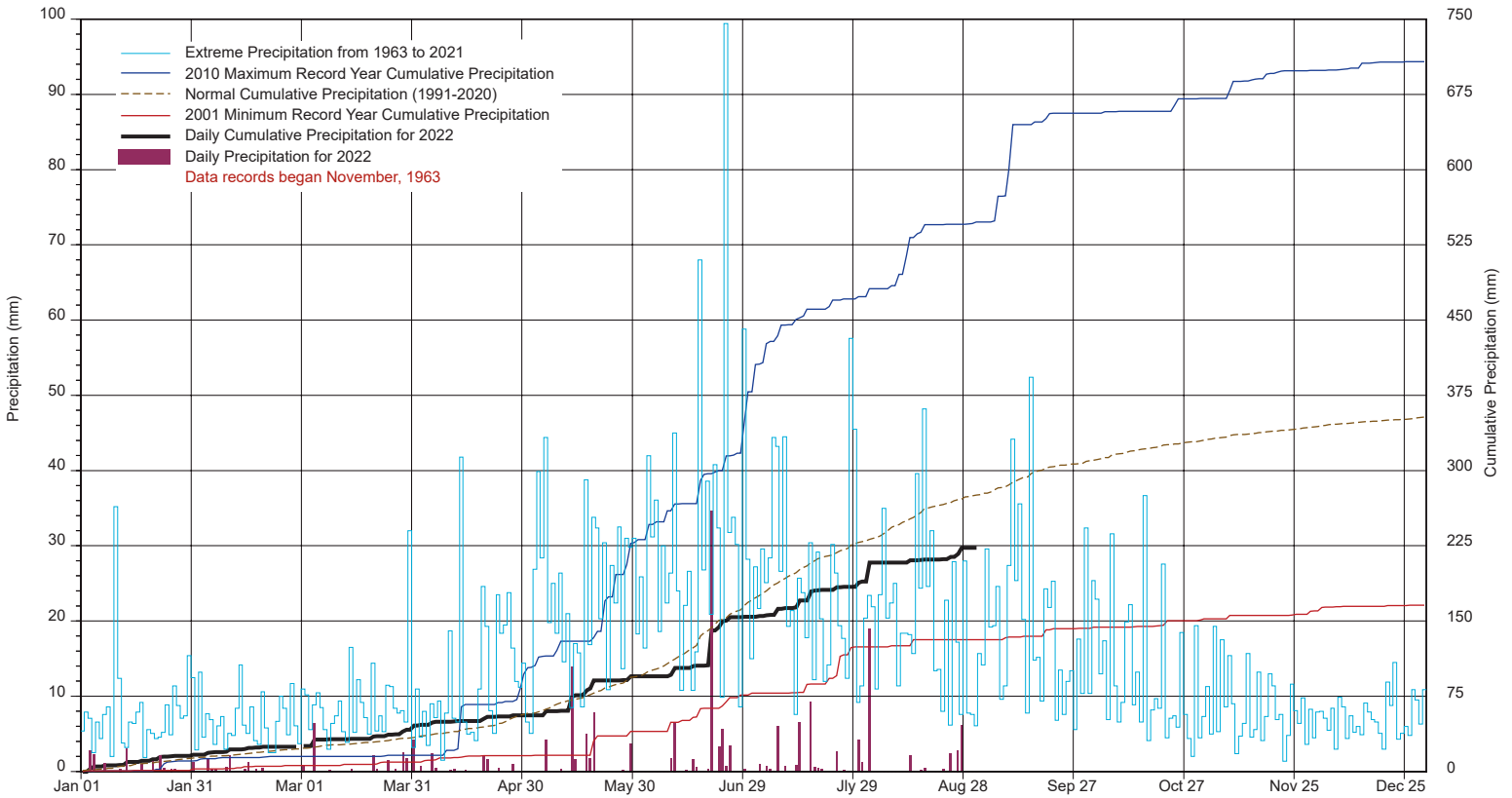
10 minute Average Wind Speed and Direction Saskatoon August 2022



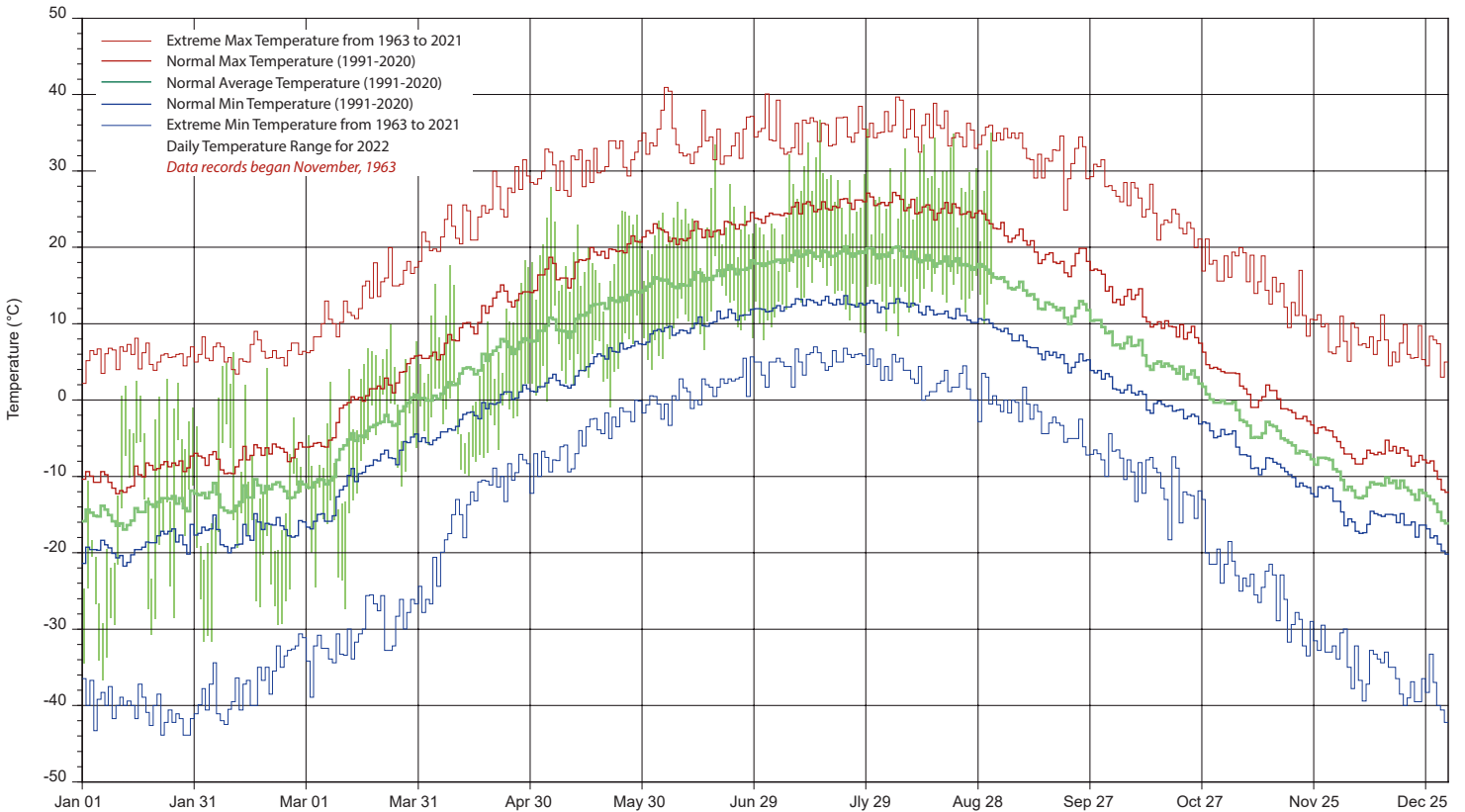
1/2 hr Maximum Wind Speed and Direction Saskatoon August 2022



SASKATCHEWAN RESEARCH COUNCIL SASKATOON CLIMATE REFERENCE STATION 2022 PRECIPITATION AND NORMALS



2022 TEMPERATURES AND NORMALS



SRC proudly recongnizes the following CRS supporters:

