



# SRC CLIMATE REFERENCE STATION DAILY DATA REPORT

## CONSERVATION LEARNING CENTRE

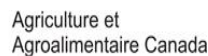
Saskatchewan 53.03°N 105.77°W 451m asl Estab. 2011

Preliminary

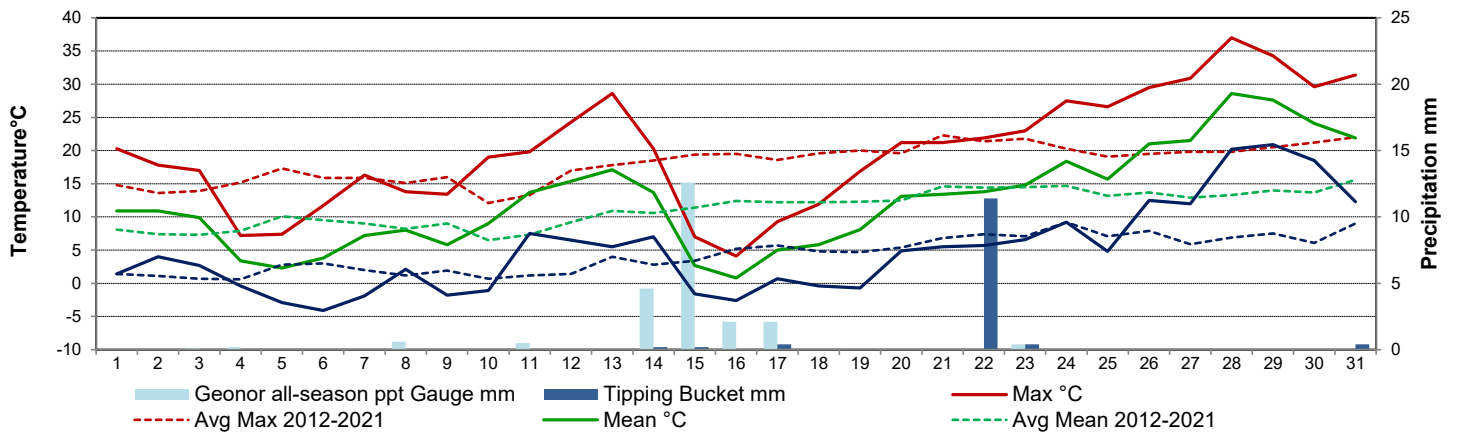
**May 2026**

Day	Temperature						Degree-days			Precipitation			Relative Humidity		Station Pressure <i>corrected to sea level</i>	
	Max	Avg Max	Min	Avg Min	Mean	Avg Mean	Growing	Heating	Cooling	Geonor all-season ppt Gauge	Tipping Bucket	Notes	Max ½ hr Avg	Min ½ hr Avg	Max ½ hr Avg	Min ½ hr Avg
	°C	2012-2021	°C	2012-2021	°C	2012-2021	5°C base	18°C base	18°C base	mm	mm		%	%	mbar	mbar
1	20.3	14.8	1.4	1.4	10.9	8.1	5.9	7.1	0.0	0.0	0.0		95	42	1014	1007
2	17.8	13.6	4.0	1.1	10.9	7.4	5.9	7.1	0.0	0.0	0.0		86	35	1016	1009
3	17.0	13.9	2.7	0.7	9.9	7.3	4.9	8.1	0.0	0.1	0.0		87	30	1008	999
4	7.2	15.2	-0.4	0.6	3.4	7.9	0.0	14.6	0.0	0.2	0.0		94	35	1014	1007
5	7.4	17.3	-2.9	2.8	2.3	10.1	0.0	15.7	0.0	0.0	0.0		80	35	1018	1014
6	11.7	15.9	-4.1	3.0	3.8	9.5	0.0	14.2	0.0	0.0	0.0		99	28	1018	1010
7	16.3	15.9	-1.9	2.0	7.2	9.0	2.2	10.8	0.0	0.0	0.0		95	27	1010	1005
8	13.8	15.1	2.1	1.2	8.0	8.2	3.0	10.0	0.0	0.6	0.0		93	36	1012	1007
9	13.4	16.0	-1.8	1.9	5.8	9.0	0.8	12.2	0.0	0.0	0.0		85	32	1018	1012
10	19.0	12.1	-1.1	0.7	9.0	6.5	4.0	9.0	0.0	0.0	0.0		98	29	1019	1010
11	19.8	13.3	7.5	1.2	13.7	7.3	8.7	4.3	0.0	0.5	0.0		99	44	1012	1004
12	24.3	17.0	6.5	1.4	15.4	9.2	10.4	2.6	0.0	0.0	0.0		99	22	1016	1013
13	28.6	17.8	5.5	4.0	17.1	10.9	12.1	0.9	0.0	0.0	0.0		99	17	1014	995
14	20.3	18.5	7.0	2.8	13.7	10.6	8.7	4.3	0.0	4.6	0.2		96	30	994	982
15	7.0	19.4	-1.6	3.4	2.7	11.4	0.0	15.3	0.0	12.6	0.2		100	90	1011	991
16	4.1	19.5	-2.6	5.2	0.8	12.4	0.0	17.2	0.0	2.1	0.0		100	79	1015	1011
17	9.3	18.6	0.7	5.7	5.0	12.2	0.0	13.0	0.0	2.1	0.4		99	45	1019	1015
18	11.9	19.6	-0.4	4.8	5.8	12.2	0.8	12.2	0.0	0.0	0.0		100	36	1020	1019
19	16.9	20.0	-0.7	4.7	8.1	12.3	3.1	9.9	0.0	0.0	0.0		92	38	1019	1013
20	21.2	19.6	4.9	5.4	13.1	12.5	8.1	4.9	0.0	0.0	0.0		83	28	1014	1012
21	21.2	22.3	5.5	6.8	13.4	14.6	8.4	4.6	0.0	0.0	0.0		94	27	1017	1014
22	21.9	21.4	5.7	7.4	13.8	14.4	8.8	4.2	0.0	0.0	11.4		100	28	1015	1011
23	23.0	21.8	6.6	7.1	14.8	14.5	9.8	3.2	0.0	0.4	0.4		98	34	1011	1005
24	27.5	20.3	9.2	9.2	18.4	14.7	13.4	0.0	0.4	0.0	0.0		85	30	1008	1002
25	26.6	19.1	4.8	7.1	15.7	13.2	10.7	2.3	0.0	0.0	0.0		100	20	1010	1008
26	29.5	19.5	12.5	7.9	21.0	13.7	16.0	0.0	3.0	0.0	0.0		60	25	1015	1009
27	30.9	19.8	12.0	5.9	21.5	12.9	16.5	0.0	3.5	0.0	0.0		71	27	1017	1009
28	37.0	19.8	20.2	6.9	28.6	13.3	23.6	0.0	10.6	0.0	0.0		66	19	1009	1005
29	34.3	20.5	20.9	7.5	27.6	14.0	22.6	0.0	9.6	0.0	0.0		59	28	1006	1004
30	29.6	21.2	18.5	6.1	24.1	13.7	19.1	0.0	6.1	0.0	0.0		80	44	1012	1005
31	31.4	22.0	12.3	9.0	21.9	15.6	16.9	0.0	3.9	0.0	0.4		92	45	1012	1009
Total							244.4	207.7	37.1	23.2	13.0					
Avg	20.0	18.1	4.9	4.4	12.5	11.3	Monthly 2012 - 2021 Average			38.3	2012-2021 Average					
Extreme	37.0	32.4	-4.1	-8.8			199.3	211.2	3.5	63.3	2026 Cumulative ppt		100	17	1020	982
Date	28	2016	6	2019						99.7	Cumulative Average		15	13	18	14

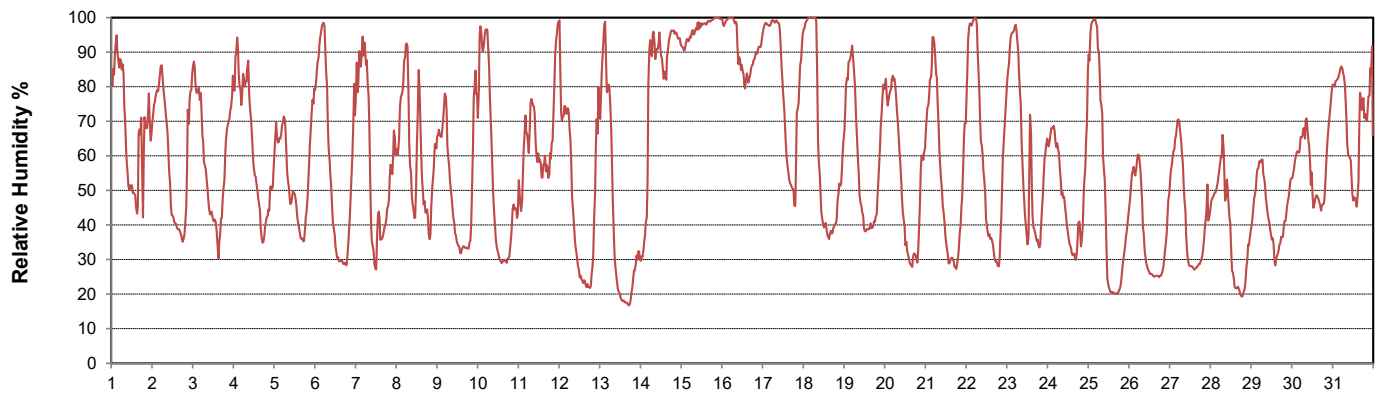
**SRC proudly recognizes the following CRS supporters:**



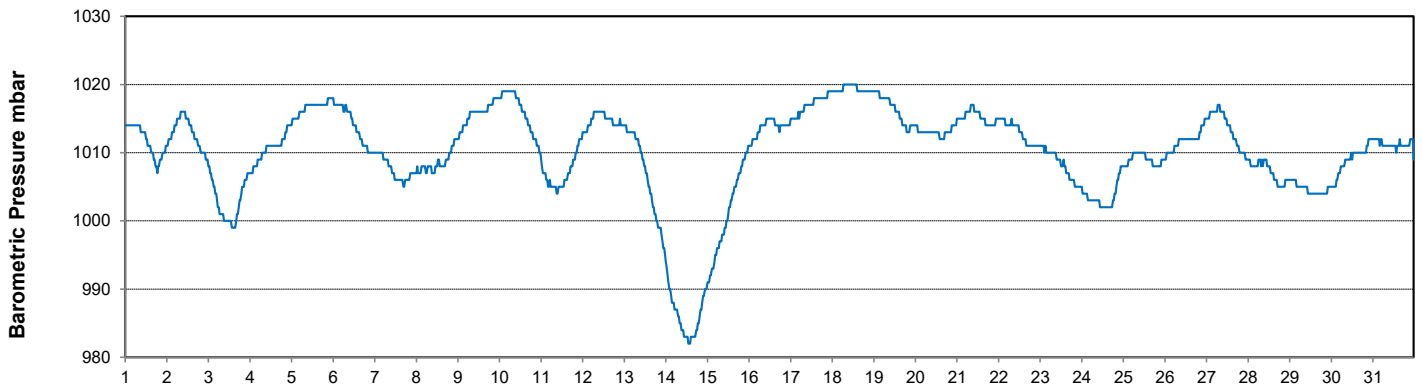
### Temperature and Precipitation for May 2026



### Relative Humidity for May 2026



### Barometric Pressure Corrected to Sea Level for May 2026





SRC CLIMATE REFERENCE STATION DAILY DATA REPORT

CONSERVATION LEARNING CENTRE

Saskatchewan 53.03°N 105.77°W 451m asl Estab. 2011

Preliminary

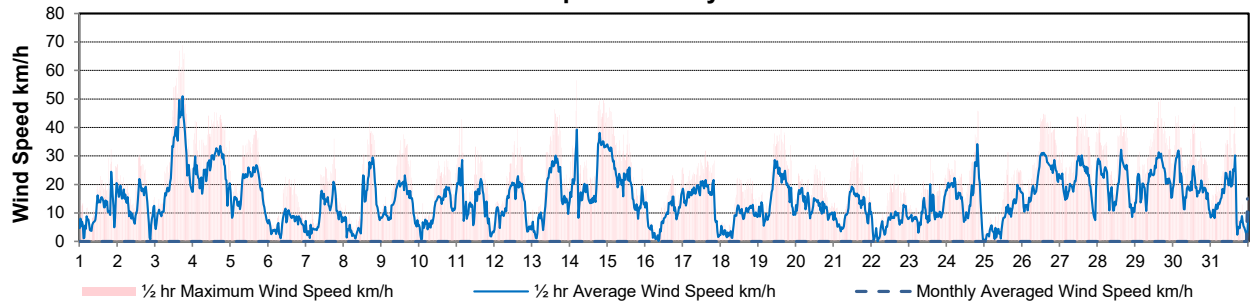
May 2026

Day	Wind Gust			Wind Speed (10 meters)	Soil Temperatures at 0900hrs								Radiation				
	Max	Direction	Time	Daily Average	Surface	5 cm	10 cm	20 cm	50 cm	100 cm	150 cm	300 cm	Bright Sunshine	Possible	% Possible	Global	Diffuse
	km/h			km/h	°C	°C	°C	°C	°C	°C	°C	°C	hours	hours		MJ/m <sup>2</sup>	MJ/m <sup>2</sup>
1	32.3	NNW	19:32	10.5	6.0	0.0	0.0	0.0	0.0	0.5	1.0	3.0	12.0	15.0	79.9	23.0	6.1
2	30.4	NW	13:36	13.1	9.0	0.0	0.0	0.0	0.0	0.5	1.0	3.0	14.6	15.1	96.8	25.3	3.1
3	68.9	NNW	17:12	25.4	12.0	0.5	0.0	0.0	0.0	1.0	1.5	3.0	8.1	15.2	53.5	17.5	9.7
4	45.4	NNW	13:50	25.7	0.5	0.0	0.0	0.0	0.0	0.5	1.0	3.0	8.4	15.2	55.2	18.3	9.9
5	39.3	N	15:51	18.1	1.5	0.0	0.0	0.0	0.0	0.5	1.0	3.0	13.4	15.3	87.8	26.2	3.4
6	22.6	NNW	10:39	6.5	3.5	0.0	0.0	0.0	0.0	0.5	1.0	3.0	14.8	15.3	96.5	27.3	2.9
7	36.0	NW	17:43	10.0	7.0	0.5	0.5	0.5	0.0	0.5	1.0	3.0	7.8	15.4	50.7	15.9	10.1
8	42.1	N	16:02	11.8	8.5	2.0	1.5	1.0	0.5	0.5	1.0	2.5	7.9	15.5	51.1	15.4	6.8
9	37.6	N	13:50	13.6	7.5	0.5	1.0	1.0	0.5	0.5	1.0	3.0	15.2	15.5	98.1	27.1	3.1
10	28.9	SSE	17:23	11.3	9.0	1.0	1.0	1.5	1.0	0.5	1.0	2.5	13.4	15.6	86.1	22.5	8.1
11	42.9	S	2:49	13.1	10.0	5.0	4.5	3.0	1.0	0.5	1.0	3.0	8.9	15.6	57.0	19.8	7.1
12	40.2	W	14:39	13.2	17.5	5.0	5.0	4.0	2.0	1.0	1.0	3.0	11.8	15.7	75.3	20.4	6.5
13	46.4	S	14:09	15.8	20.0	5.5	5.0	4.5	2.5	1.0	1.0	3.0	12.0	15.7	76.3	24.1	5.7
14	56.5	S	4:13	22.8	13.5	9.0	8.5	6.5	3.5	1.5	1.0	3.0	0.0	15.8	0.0	5.8	5.2
15	47.1	NW	1:06	20.3	1.5	6.0	6.5	6.0	4.0	1.5	1.0	2.5	0.0	15.8	0.0	6.5	5.8
16	25.9	ENE	23:30	8.5	0.0	3.0	3.0	3.5	4.0	1.5	1.0	2.5	0.4	15.9	2.5	13.8	12.3
17	31.9	ENE	14:00	15.5	1.5	2.5	2.5	3.0	3.5	2.0	1.5	2.5	2.6	15.9	16.3	12.0	9.8
18	22.3	E	10:53	7.8	6.0	2.0	2.5	3.0	3.0	2.0	1.5	2.0	12.6	16.0	78.8	27.4	5.0
19	39.5	SSW	14:06	16.7	9.0	4.5	4.5	4.5	3.5	2.0	1.5	2.5	13.3	16.0	82.9	24.7	8.6
20	26.8	ESE	12:20	12.7	13.0	6.0	6.0	5.5	4.0	2.5	2.0	3.0	12.8	16.1	79.6	24.0	7.1
21	32.1	ESE	12:08	11.3	14.5	7.5	7.5	7.0	4.5	2.5	2.0	3.0	14.7	16.1	91.1	28.1	5.0
22	23.6	ENE	14:29	6.6	14.0	8.5	9.0	8.0	5.5	3.0	2.0	3.0	5.2	16.2	32.1	27.9	4.4
23	29.4	NNW	13:07	10.2	16.0	9.5	10.0	9.0	6.0	3.5	2.0	3.0	0.0	16.2	0.0	22.8	7.0
24	45.9	N	19:18	16.0	18.0	11.0	11.0	9.5	7.0	3.5	2.5	3.0	0.0	16.3	0.0	25.0	8.1
25	31.3	SE	14:47	8.4	14.0	10.5	11.5	10.0	7.5	4.0	2.5	3.0	6.9	16.3	42.3	23.2	7.1
26	44.8	E	13:04	22.3	20.5	12.0	12.5	10.5	8.0	4.5	2.5	3.0	15.6	16.4	95.4	27.7	4.7
27	44.6	SE	16:16	21.0	19.5	13.0	13.5	11.5	8.5	4.5	3.0	3.0	14.1	16.4	86.0	26.6	6.2
28	44.3	SSW	14:02	20.1	26.0	15.0	15.5	12.5	9.0	5.0	3.0	3.0	9.7	16.4	59.0	22.5	7.2
29	50.6	SSE	15:35	22.2	27.0	16.0	16.5	13.5	10.0	5.5	3.5	3.0	14.1	16.5	85.6	26.3	6.7
30	44.4	SSE	3:20	19.6	21.5	17.0	17.5	14.0	10.5	6.0	3.5	3.0	10.6	16.5	64.2	19.2	9.9
31	51.9	SSE	18:52	13.4	23.0	16.5	17.5	14.5	11.0	6.5	4.0	3.0	10.5	16.6	63.4	10.6	8.3
Total													291.4	491.5	59.3	656.9	210.9
Mean					12.0	6.1	6.3	5.4	3.9	2.2	1.7	2.9					
Extreme	68.9	NNW	17:12														
Date	3																

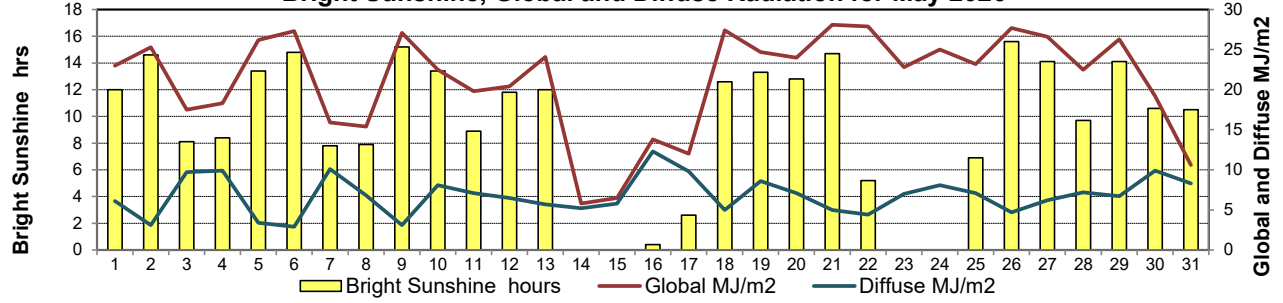
GLOSSARY OF TERMS

Degree-days	Radiation
T <sub>m</sub> Mean Temperature	Bright Sunshine is the unobstructed direct radiation from the sun, as opposed to the shading of a location by clouds or by other atmospheric obstructions.
Growing (T <sub>m</sub> -5°C); if T <sub>m</sub> ≤ 5°C then GDD = 0	
Heating (18°C-T <sub>m</sub> ); if T <sub>m</sub> ≥ 18°C then HDD = 0	
Cooling (T <sub>m</sub> -18°C); if T <sub>m</sub> ≤ 18°C then CDD = 0	Diffuse is radiation reaching the earth's surface after having been scattered from the direct solar beam
T Trace of Precipitation	Global is the sum of the direct solar and diffuse radiation
SOG Depth of snow-on-the-ground	Relative Humidity The ratio of the air's water vapour content of its water vapour capacity which changes with temperature.
Red Cell no data available	Air Pressure The force exerted by the weight of a column of air above a given point
Red Number manual calculation	Wind Gust The daily highest instantaneous value recorded irrespective of direction and/or duration

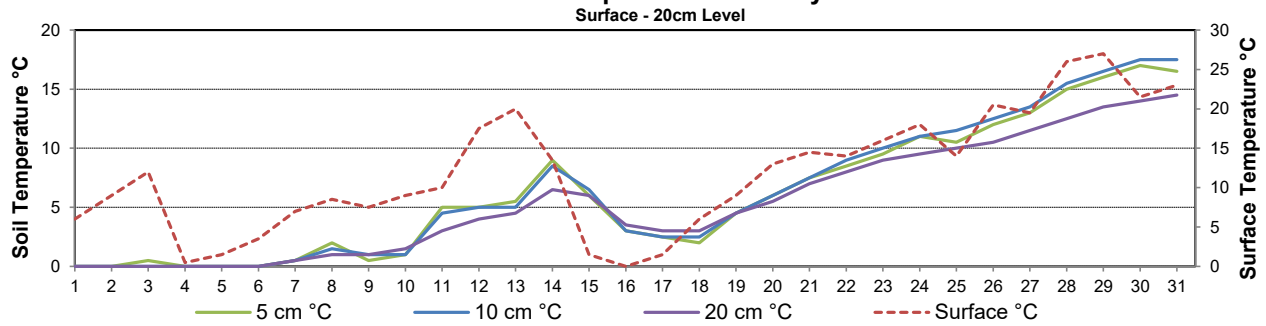
### Wind Speed for May 2026



### Bright Sunshine, Global and Diffuse Radiation for May 2026



### 9 am Soil Temperatures for May 2026



### 9 am Soil Temperatures for May 2026

