



SRC CLIMATE REFERENCE STATION DAILY DATA REPORT CONSERVATION LEARNING CENTRE

Saskatchewan 53.03°N 105.77°W 451m asl Estab. 2011

Preliminary **March 2026**

Day	Temperature (HMP155A)						Degree-days			Precipitation			Relative Humidity (HMP155A)		Station Pressure corrected to sea level		
	Max	Avg Max	Min	Avg Min	Mean	Avg Mean	Growing	Heating	Cooling	Geonor all-season ppt Gauge	Notes:	Snow-on-Ground 0900h	Max ½ hr Avg	Min ½ hr Avg	Max ½ hr Avg	Min ½ hr Avg	
	°C	2012-2021	°C	2012-2021	°C	2012-2021	5°C base	18°C base	18°C base	mm		cm	%	%	mbar	mbar	
1	-10.0	-8.1	-31.6	-20.9	-20.8	-14.5	0.0	38.8	0.0	0.0		0	90	72	1022	1008	
2	-7.3	-7.0	-20.8	-19.6	-14.1	-13.3	0.0	32.1	0.0	3.1		52	89	57	1018	1010	
3	-12.9	-6.7	-23.0	-19.4	-18.0	-13.1	0.0	36.0	0.0	1.1		59	83	73	1019	1014	
4	-17.0	-5.7	-23.7	-16.6	-20.4	-11.2	0.0	38.4	0.0	0.2		61	78	70	1022	1017	
5	-10.9	-3.7	-22.3	-14.5	-16.6	-9.1	0.0	34.6	0.0	-0.1		56	87	70	1017	1011	
6	-2.5	-2.2	-16.8	-14.9	-9.7	-8.6	0.0	27.7	0.0	0.0		55	94	68	1013	1008	
7	5.9	-5.0	-16.6	-18.2	-5.4	-11.6	0.0	23.4	0.0	0.2		55	98	58	1007	989	
8	-0.2	-5.7	-19.0	-17.7	-9.6	-11.7	0.0	27.6	0.0	0.3		50	93	71	1003	990	
9	-10.8	-3.4	-24.8	-15.0	-17.8	-9.2	0.0	35.8	0.0	0.9		49	87	67	1009	1004	
10	-6.9	0.1	-24.5	-14.7	-15.7	-7.3	0.0	33.7	0.0	0.1		49	90	62	1018	1009	
11	-5.5	-1.3	-29.8	-13.4	-17.7	-7.3	0.0	35.7	0.0	0.0		48	93	72	1019	1008	
12	-8.5	-0.2	-18.2	-13.4	-13.4	-6.8	0.0	31.4	0.0	0.1		51	90	61	1016	1005	
13	-13.4	1.8	-28.3	-10.4	-20.9	-4.3	0.0	38.9	0.0	0.9		50	85	59	1017	1014	
14	-15.2	-0.6	-30.6	-11.2	-22.9	-5.9	0.0	40.9	0.0	0.2		0	84	65	1025	1016	
15	-12.5	-0.9	-36.0	-12.0	-24.3	-6.5	0.0	42.3	0.0	0.0		0	82	48	1028	1025	
16	-10.1	0.7	-30.6	-12.6	-20.4	-6.0	0.0	38.4	0.0	0.0		51	82	49	1024	1003	
17	7.8	0.5	-12.2	-10.3	-2.2	-4.9	0.0	20.2	0.0	2.1		60	89	58	1002	991	
18	-0.9	0.9	-7.9	-9.9	-4.4	-4.5	0.0	22.4	0.0	2.1		57	97	68	1009	1000	
19	8.1	2.6	-6.6	-9.0	0.8	-3.2	0.0	17.2	0.0	0.4		58	95	61	1008	1002	
20	3.6	2.1	-6.3	-10.7	-1.4	-4.3	0.0	19.4	0.0	3.9		55	97	65	1013	1008	
21	-3.9	-0.7	-10.5	-12.1	-7.2	-6.4	0.0	25.2	0.0	2.3		54	94	64	1020	1009	
22	1.1	-0.3	-9.6	-11.0	-4.3	-5.7	0.0	22.3	0.0	0.3		53	91	43	1021	1017	
23	-1.2	-0.7	-13.4	-10.4	-7.3	-5.6	0.0	25.3	0.0	0.1		53	92	46	1021	1015	
24	-10.2	-0.5	-19.1	-8.3	-14.7	-4.4	0.0	32.7	0.0	0.3		53	82	71	1020	1015	
25	-14.7	0.5	-21.2	-11.7	-18.0	-5.6	0.0	36.0	0.0	2.3		61	86	73	1023	1014	
26	-11.7	1.7	-29.0	-8.6	-20.4	-3.5	0.0	38.4	0.0	0.0		59	84	38	1032	1023	
27	-8.7	2.2	-29.2	-7.3	-19.0	-2.5	0.0	37.0	0.0	0.0		59	85	62	1034	1019	
28	-7.3	4.0	-19.8	-8.6	-13.6	-2.3	0.0	31.6	0.0	0.0		58	89	68	1019	1015	
29	-1.7	4.1	-18.6	-8.0	-10.2	-2.0	0.0	28.2	0.0	0.1		58	88	43	1018	1015	
30	-5.6	2.8	-14.6	-9.6	-10.1	-3.4	0.0	28.1	0.0	0.9		58	92	52	1019	1016	
31	-4.6	2.3	-20.7	-10.6	-12.7	-4.2	0.0	30.7	0.0	0.5		58	92	67	1021	1018	
Total							0.0	970.4	0.0	22.3							
Avg	-6.1	-1.2	-20.5	-13.0	-13.3	-7.1	Monthly 2012 - 2021 Average			14.1	2012-2021 Average						
Extreme	8.1	17.3	-36.0	-35.8			1.1	740.4	0.0	57.8	2025 Cumulative ppt			98	38	1034	989
Date	19	2012	15	2014						41.8	Cumulative Average			7	26	27	7

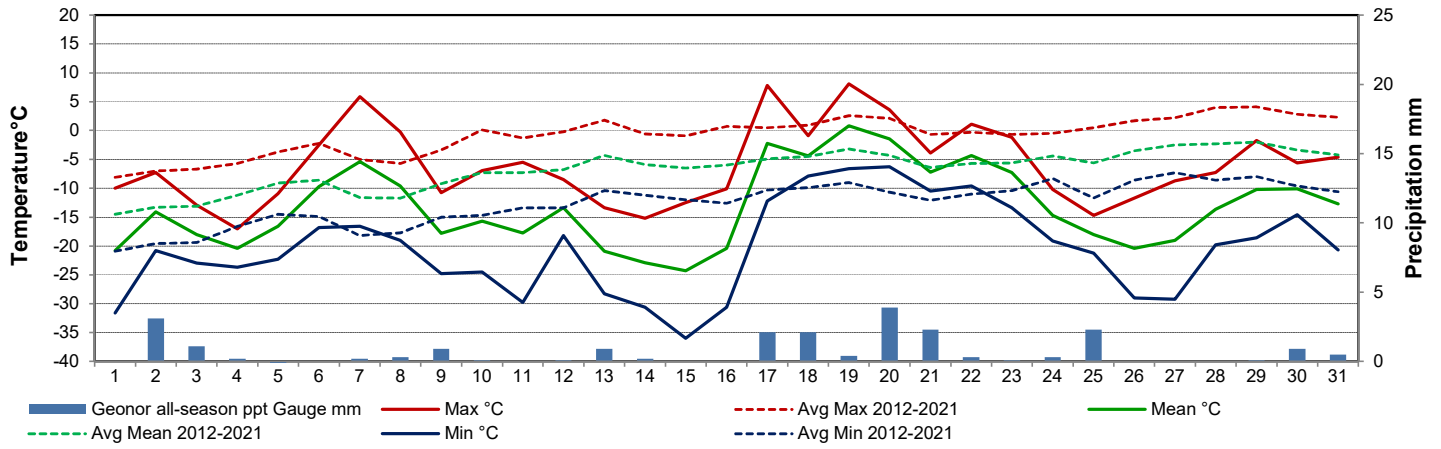
Note: Red numbers indicate manual calculation; Red cell indicate data not available

Precipitation is measured precipitation. It has not been corrected for wind speed.

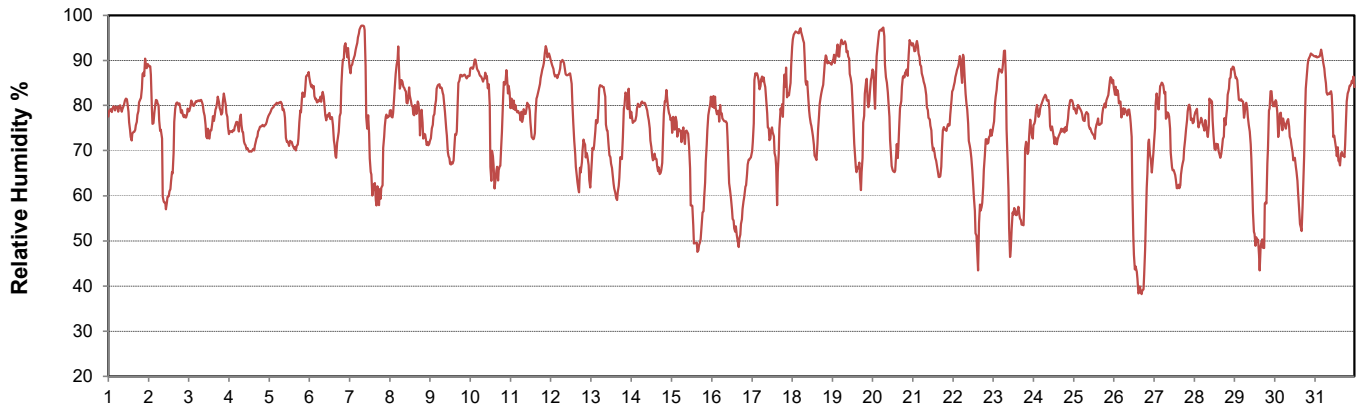
SRC proudly recognizes the following CRS supporters:



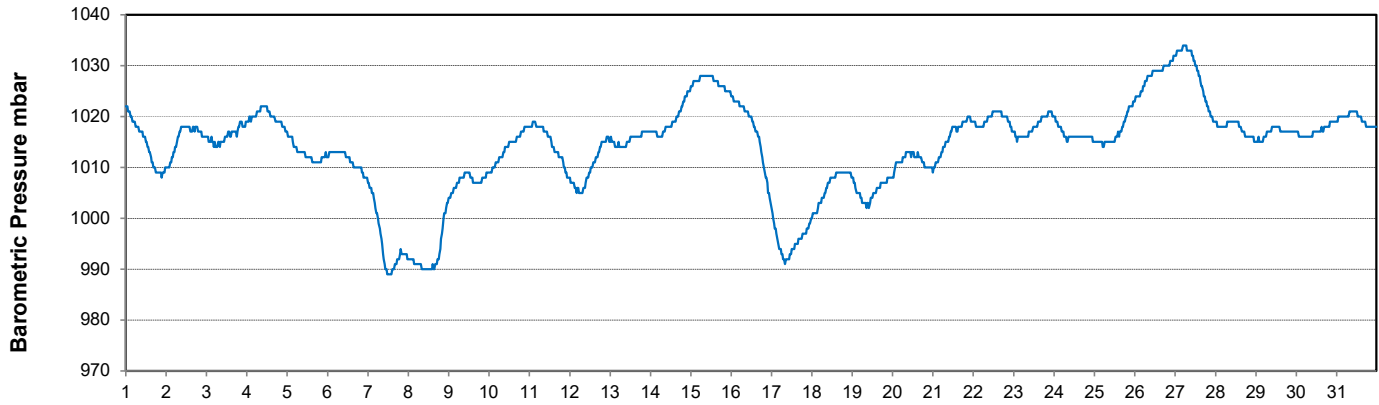
Temperature and Precipitation for March 2026



Relative Humidity for March 2026



Barometric Pressure Corrected to Sea Level for March 2026





SRC CLIMATE REFERENCE STATION DAILY DATA REPORT CONSERVATION LEARNING CENTRE

Saskatchewan 53.03°N 105.77°W 451m asl Estab. 2011

Preliminary

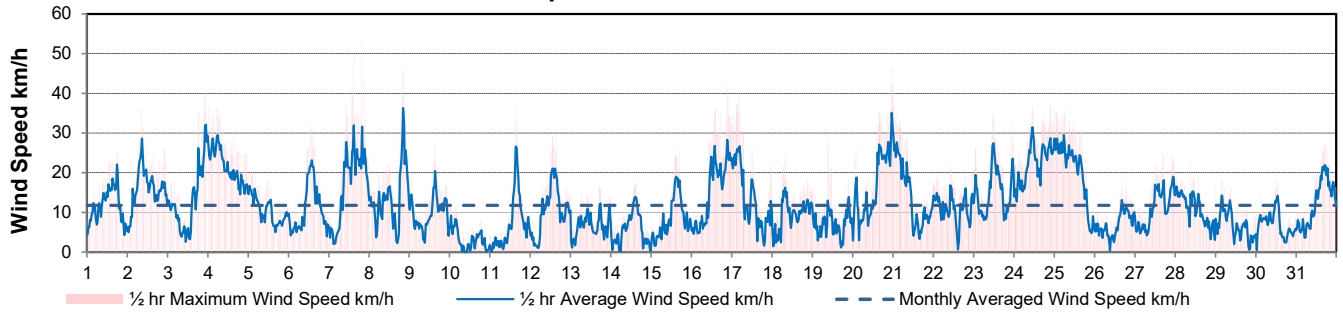
March 2026

Day	Wind Gust			Wind Speed	Soil Temperatures at 0900hrs								Radiation				
	Max	Direction	Time	Daily Average	Surface	5 cm	10 cm	20 cm	50 cm	100 cm	150 cm	300 cm	Bright Sunshine	Bright Sunshine Possible	% Possible	Global	Diffuse
	km/h			km/h	°C	°C	°C	°C	°C	°C	°C	°C	hours	hours		MJ/m ²	MJ/m ²
1	25.6	S	17:45	11.5	-12.0	-2.0	-2.0	-1.5	-1.0	0.5	1.5	4.5	5.6	10.9	51.4	9.3	7.4
2	35.9	NNE	8:22	16.0	-7.5	-2.5	-2.0	-1.5	-1.0	0.5	1.5	4.5	1.6	11.0	14.6	7.5	6.7
3	40.1	NE	22:25	13.1	-7.5	-2.0	-2.0	-1.5	-1.5	0.5	1.5	4.5	0.0	11.0	0.0	7.7	7.4
4	36.8	NE	5:18	21.4	-11.5	-2.0	-2.0	-1.5	-1.0	0.5	1.5	4.5	0.0	11.1	0.0	8.1	7.7
5	22.0	E	0:48	10.2	-8.5	-2.0	-2.0	-1.5	-1.0	0.5	1.5	4.5	0.1	11.2	0.9	8.5	8.1
6	31.8	SSW	13:23	10.9	-6.5	-2.0	-2.0	-1.5	-1.0	0.5	1.5	4.0	4.2	11.2	37.4	10.2	8.1
7	52.8	NW	19:44	16.9	-4.5	-2.0	-2.0	-1.5	-1.0	0.5	1.5	4.0	5.4	11.3	47.7	10.2	5.8
8	45.7	NNE	20:06	13.7	-5.0	-1.5	-1.5	-1.5	-1.0	0.5	1.5	4.0	0.5	11.4	4.4	6.9	6.4
9	27.3	S	15:12	9.6	-17.0	-1.5	-1.5	-1.5	-1.0	0.5	1.5	4.0	5.2	11.5	45.4	10.5	5.7
10	13.6	NNW	0:49	3.3	-9.5	-1.5	-1.5	-1.5	-1.0	0.5	1.5	4.0	9.7	11.5	84.2	14.7	4.2
11	36.5	S	15:45	6.9	-17.5	-1.5	-1.5	-1.5	-1.0	0.5	1.5	4.0	6.8	11.6	58.7	14.0	6.2
12	29.3	N	13:24	10.4	-10.0	-2.0	-1.5	-1.5	-1.0	0.5	1.5	4.0	6.2	11.7	53.2	9.1	5.6
13	16.5	S	17:28	6.6	-12.5	-2.0	-1.5	-1.5	-1.0	0.5	1.5	4.0	9.9	11.7	84.4	12.8	3.1
14	17.8	ENE	15:08	5.8	-15.0	-2.0	-2.0	-1.5	-1.0	0.5	1.5	4.0	7.3	11.8	61.9	13.6	7.6
15	25.7	SW	16:40	8.6	-20.5	-2.0	-2.0	-1.5	-1.0	0.5	1.5	4.0	11.4	11.9	96.0	16.7	3.1
16	42.1	SSE	21:19	15.3	-17.5	-2.0	-2.0	-1.5	-1.0	0.5	1.5	4.0	10.8	11.9	90.5	15.5	6.6
17	40.7	SSE	3:38	13.2	-6.5	-2.0	-2.0	-1.5	-1.0	0.5	1.5	4.0	6.6	12.0	55.0	12.9	7.0
18	23.6	NE	7:43	9.4	-3.0	-2.0	-2.0	-1.5	-1.0	0.5	1.5	4.0	0.0	12.1	0.0	10.1	9.4
19	29.4	N	9:30	7.1	-2.0	-2.0	-2.0	-1.5	-1.0	0.5	1.5	4.0	0.5	12.2	4.1	9.7	8.8
20	46.7	ENE	23:04	16.4	0.0	-1.0	-1.5	-1.5	-1.0	0.0	1.5	4.0	2.0	12.2	16.4	9.4	8.6
21	36.8	ENE	0:12	14.2	-7.0	-1.0	-1.0	-1.0	-1.0	0.0	1.5	3.5	4.7	12.3	38.2	13.8	8.9
22	21.7	NW	10:04	10.9	-4.0	-1.0	-1.0	-1.0	-1.0	0.0	1.5	4.0	9.4	12.4	76.1	17.0	3.2
23	35.1	NW	11:03	15.1	-5.5	-1.0	-1.0	-1.0	-0.5	0.0	1.5	4.0	11.3	12.4	90.9	18.0	3.4
24	36.9	NE	21:49	22.4	-6.5	-1.0	-1.0	-1.0	-0.5	0.5	1.5	4.0	4.2	12.5	33.6	12.7	9.8
25	35.9	NE	0:19	20.1	-10.5	-1.0	-1.0	-1.0	-0.5	0.5	1.5	4.0	0.9	12.6	7.2	11.1	10.1
26	18.3	WNW	16:18	7.0	-14.5	-1.0	-1.0	-1.0	-0.5	0.5	1.5	4.0	7.6	12.6	60.1	14.8	11.3
27	24.7	S	16:48	10.9	-15.0	-1.5	-1.5	-1.0	-0.5	0.5	1.5	4.0	10.1	12.7	79.5	18.2	9.2
28	22.2	E	9:14	10.9	-11.0	-1.5	-1.5	-1.0	-0.5	0.5	1.5	4.0	9.7	12.8	75.9	16.4	8.3
29	18.5	NNW	4:02	7.0	-9.0	-2.0	-1.5	-1.5	-0.5	0.5	1.5	4.0	11.5	12.8	89.6	19.0	3.3
30	17.9	NE	13:03	6.9	-7.0	-1.5	-1.5	-1.5	-1.0	0.5	1.5	4.0	0.0	12.9	0.0	11.8	11.0
31	27.6	S	17:32	12.3	-10.5	-1.5	-1.5	-1.5	-1.0	0.5	1.5	3.5	12.0	13.0	92.4	21.1	4.0
Total													175.2	370.1	47.3	391.3	216.0
Mean					-9.5	-1.7	-1.6	-1.4	-0.9	0.4	1.5	4.0					
Extreme Date	52.8	NW	19:44														
	7																

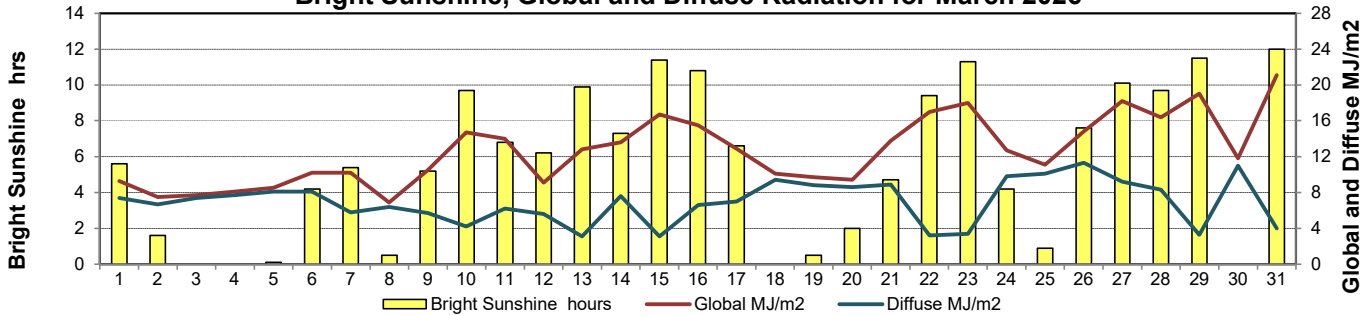
GLOSSARY OF TERMS

Degree-days	Radiation
Tm Mean Temperature	Bright Sunshine is the unobstructed direct radiation from the sun, as opposed to the shading of a location by clouds or by other atmospheric obstructions.
Growing (Tm-5°C); if Tm ≤ 5°C then GDD = 0	
Heating (18°C-Tm); if Tm ≥ 18°C then HDD = 0	
Cooling (Tm-18°C); if Tm ≤ 18°C then CDD = 0	Diffuse is radiation reaching the earth's surface after having been scattered from the direct solar beam
T Trace of Precipitation	Global is the sum of the direct solar and diffuse radiation
SOG Depth of snow-on-the-ground	Relative Humidity The ratio of the air's water vapour content to its water vapour capacity which changes with temperature.
Red Cell no data available	Air Pressure The force exerted by the weight of a column of air above a given point
Red Number manual calculation	Wind Gust The daily highest instantaneous value recorded irrespective of direction and/or duration

Wind Speed for March 2026

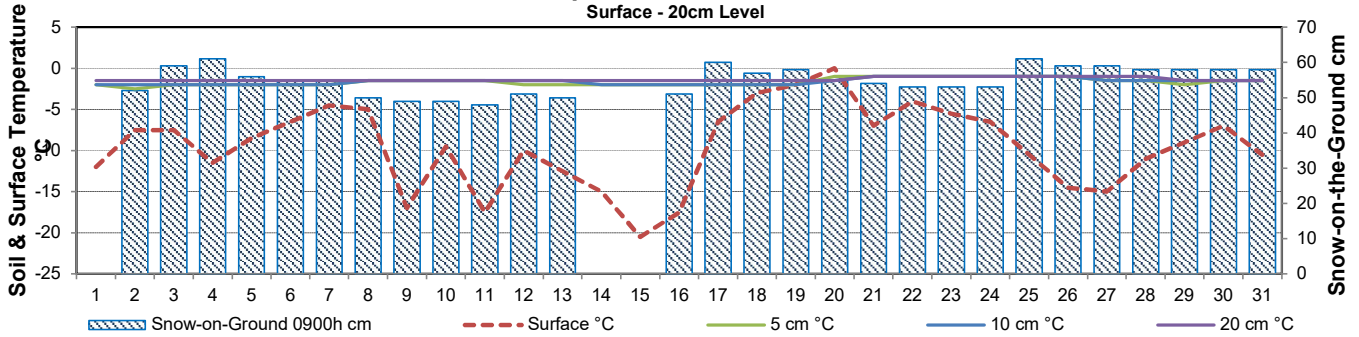


Bright Sunshine, Global and Diffuse Radiation for March 2026



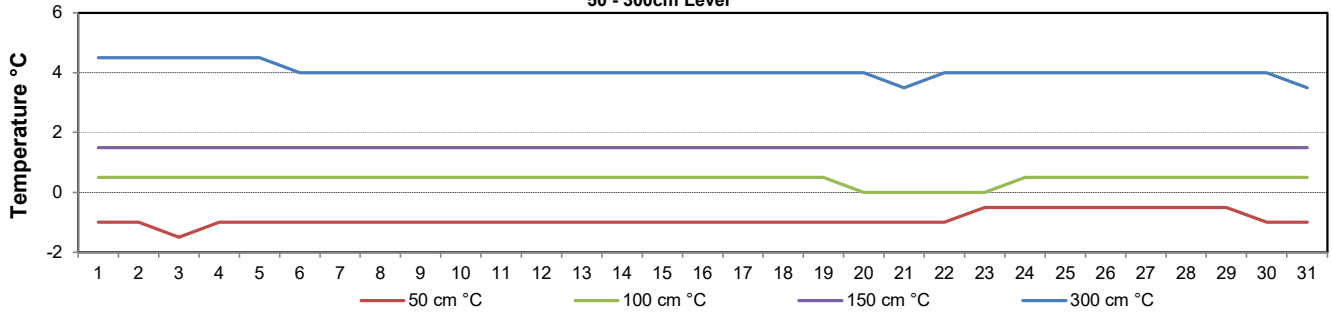
Soil Temperatures for March 2026

Surface - 20cm Level

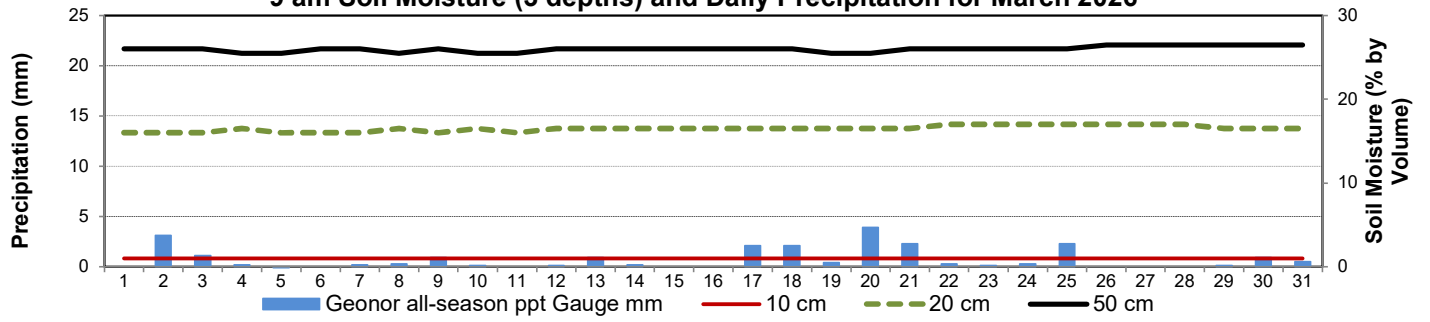


Soil Temperatures for March 2026

50 - 300cm Level



9 am Soil Moisture (3 depths) and Daily Precipitation for March 2026



March (2012 to 2025) End of Month Snow on Ground (depth (cm))