



# SRC CLIMATE REFERENCE STATION DAILY DATA REPORT

## CONSERVATION LEARNING CENTRE

Saskatchewan 53.03°N 105.77°W 451m asl Estab. 2011

Preliminary **June 2025**

Day	Temperature (HMP155A)						Degree-days			Precipitation			Relative Humidity (HMP115A)		Station Pressure <i>corrected to sea level</i>	
	Max	Avg Max	Min	Avg Min	Mean	Avg Mean	Growing	Heating	Cooling	Geonor all-season ppt Gauge	Tipping Bucket	Notes	Max ½ hr Avg	Min ½ hr Avg	Max ½ hr Avg	Min ½ hr Avg
	°C	2012-2021	°C	2012-2021	°C	2012-2021	5°C base	18°C base	18°C base	mm	mm		%	%	mbar	mbar
1	19.5	21.8	6.9	9.1	13.2	15.5	8.2	4.8	0.0	0.1	0.0		63	29	1010	999
2	19.4	23.7	3.7	9.3	11.6	16.5	6.6	6.4	0.0	0.0	0.0		74	22	1011	1009
3	17.1	23.6	3.3	8.8	10.2	16.2	5.2	7.8	0.0	1.8	1.8		81	27	1011	1009
4	19.3	22.7	0.5	9.7	9.9	16.2	4.9	8.1	0.0	0.0	0.0		79	17	1015	1011
5	23.8	21.8	-2.3	9.7	10.8	15.8	5.8	7.2	0.0	0.0	0.0		73	20	1016	1010
6	28.0	21.4	10.8	8.7	19.4	15.0	14.4	0.0	1.4	0.0	0.0		42	20	1010	999
7	18.4	22.6	4.9	9.1	11.7	15.9	6.7	6.3	0.0	6.3	7.0		89	44	1007	1000
8	15.8	21.9	1.8	9.4	8.8	15.7	3.8	9.2	0.0	0.0	0.0		97	50	1012	1008
9	27.8	20.9	-1.9	10.2	13.0	15.6	8.0	5.0	0.0	0.0	0.0		98	17	1012	1002
10	18.5	19.0	2.7	8.6	10.6	13.8	5.6	7.4	0.0	0.0	0.0		74	25	1015	1007
11	21.5	18.9	-0.1	7.5	10.7	13.2	5.7	7.3	0.0	0.0	0.0		84	26	1019	1014
12	21.4	22.2	3.8	8.3	12.6	15.3	7.6	5.4	0.0	0.1	0.0		94	36	1020	1017
13	17.0	22.6	6.7	10.8	11.9	16.8	6.9	6.1	0.0	0.2	0.2		86	54	1017	1013
14	17.7	22.0	6.2	10.5	12.0	16.3	7.0	6.0	0.0	34.5	35.8		98	68	1014	1012
15	21.2	19.1	4.2	10.8	12.7	15.0	7.7	5.3	0.0	0.0	0.2		99	54	1015	1013
16	20.2	20.3	6.5	9.3	13.4	14.8	8.4	4.6	0.0	0.0	0.0		97	50	1015	1011
17	25.2	19.1	4.5	8.4	14.9	13.8	9.9	3.1	0.0	0.0	0.0		98	32	1011	1007
18	20.1	21.7	5.7	8.5	12.9	15.2	7.9	5.1	0.0	7.6	7.8		96	52	1011	1008
19	21.0	20.7	6.3	10.8	13.7	15.8	8.7	4.3	0.0	0.0	0.2		99	57	1011	1005
20	23.8	20.5	5.7	9.6	14.8	15.1	9.8	3.2	0.0	0.1	0.0		98	31	1007	1004
21	15.6	21.4	4.8	9.1	10.2	15.3	5.2	7.8	0.0	6.7	7.6		93	49	1013	1005
22	10.6	22.8	2.9	10.9	6.8	16.9	1.8	11.2	0.0	4.7	5.4		92	69	1014	1012
23	13.7	22.1	3.0	11.2	8.4	16.7	3.4	9.6	0.0	7.7	10.2		96	59	1016	1013
24	15.7	24.0	2.1	11.7	8.9	17.9	3.9	9.1	0.0	12.6	12.2		97	48	1021	1016
25	22.1	25.0	1.2	12.6	11.7	18.8	6.7	6.3	0.0	23.0	21.8		98	47	1020	1011
26	26.1	23.3	10.3	12.5	18.2	17.9	13.2	0.0	0.2	1.4	2.0		94	48	1011	1004
27	26.1	24.2	7.2	12.4	16.7	18.3	11.7	1.3	0.0	9.4	9.8		98	37	1006	1004
28	20.3	25.6	11.1	12.6	15.7	19.1	10.7	2.3	0.0	1.3	5.2		92	65	1008	1005
29	22.6	24.4	10.4	13.0	16.5	18.7	11.5	1.5	0.0	12.7	10.4		97	61	1013	1008
30	25.7	23.5	10.7	12.5	18.2	18.0	13.2	0.0	0.2	0.0	0.0		94	37	1015	1012
Total							230.1	161.7	1.8	130.2	137.6					
Avg	20.5	22.1	4.8	10.2	12.7	16.2	<i>Monthly 2012 - 2021 Average</i>			77.6	<i>2012-2021 Average</i>					
Extreme	28.0	34.7	-2.3	2.0			334.8	74.0	18.8	158.4	<i>2025 Cumulative ppt</i>		99	17	1021	999
Date	6	2021	5	2021						177.3	<i>Cumulative Average</i>		15	4	24	1

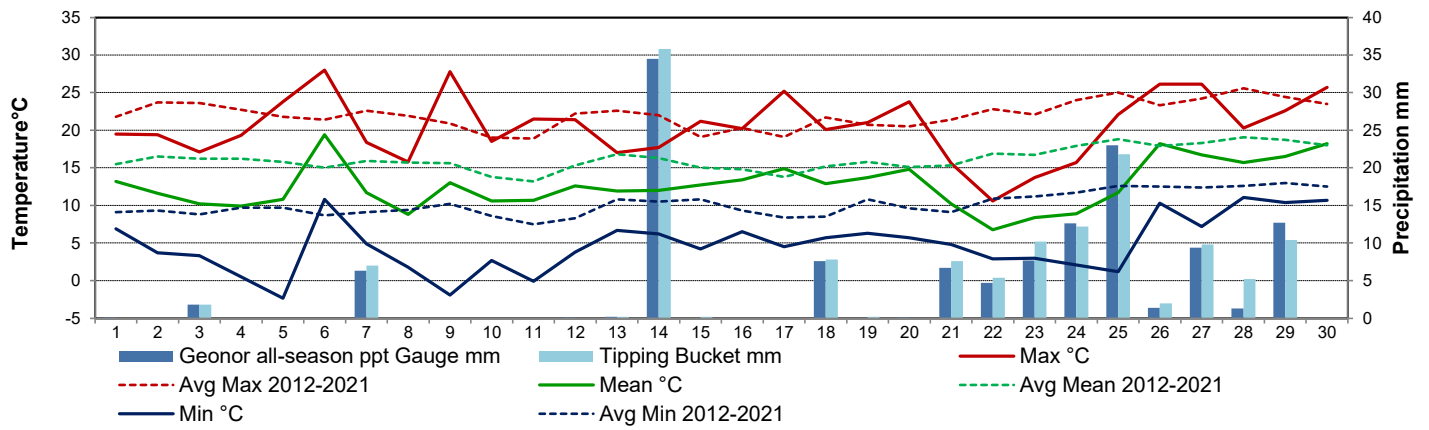
Note: Red numbers indicate manual calculation; Red cell indicate data not available

Precipitation is measured precipitation. It has not been corrected for wind speed.

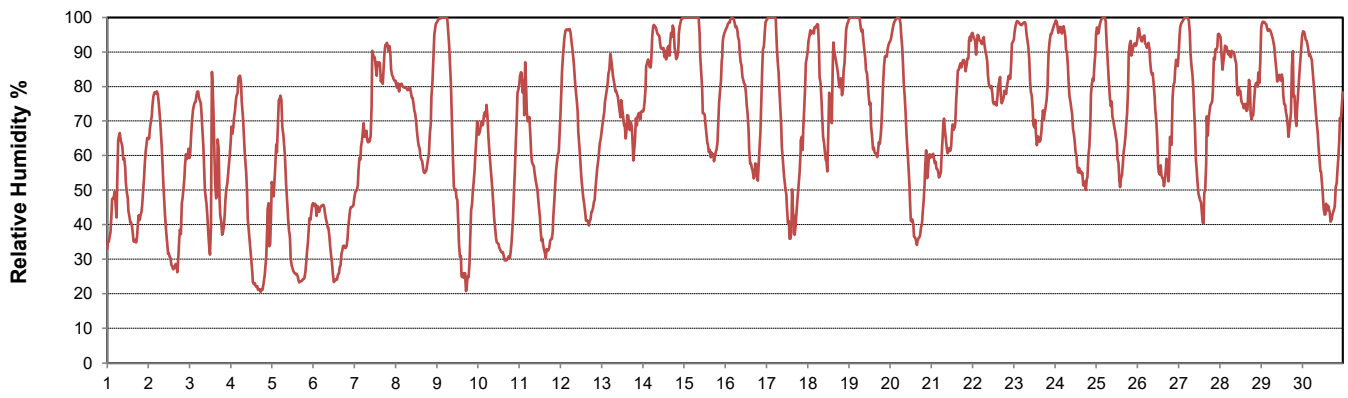
**SRC proudly recognizes the following CRS supporters:**



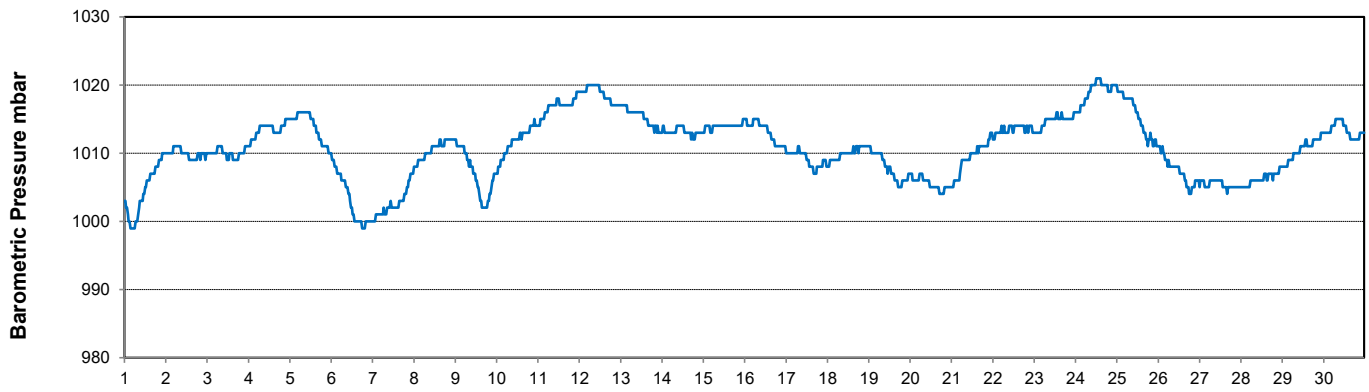
### Temperature and Precipitation for June 2025



### Relative Humidity for June 2025



### Barometric Pressure Corrected to Sea Level for June 2025





# SRC CLIMATE REFERENCE STATION DAILY DATA REPORT

## CONSERVATION LEARNING CENTRE

Saskatchewan 53.03°N 105.77°W 451m asl Estab. 2011

Preliminary

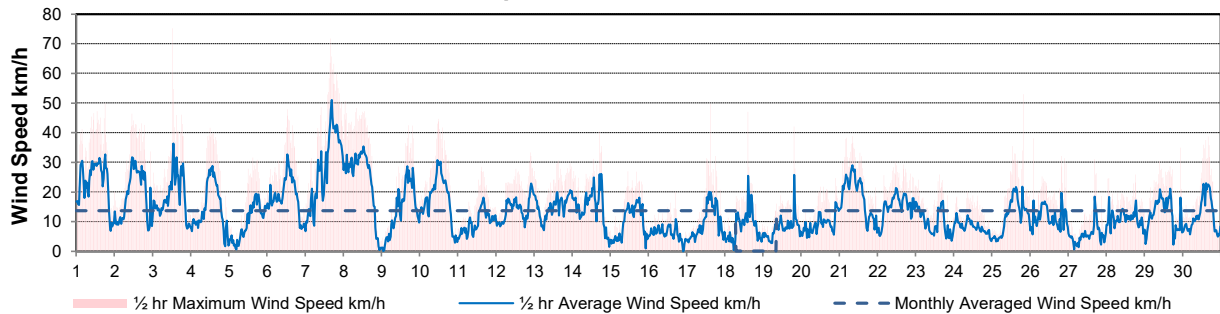
June 2025

Day	Wind Gust			Wind Speed (10 meters)	Soil Temperatures at 0900hrs								Radiation				
	Max	Direction	Time		Daily Average	Surface	5 cm	10 cm	20 cm	50 cm	100 cm	150 cm	300 cm	Bright Sunshine	Possible	% Possible	Global
	km/h			km/h		°C	°C	°C	°C	°C	°C	°C	°C	hours	hours		MJ/m <sup>2</sup>
1	49.9	NNW	18:08	23.1	18.0	15.0	16.0	13.5	11.5	8.0	5.5	3.5	9.6	16.6	57.8	21.6	10.4
2	46.3	NW	11:15	18.9	15.0	12.5	14.0	13.0	12.0	8.0	6.0	3.5	11.9	16.6	71.5	23.6	8.0
3	75.1	NW	12:51	19.0	13.5	12.5	14.0	12.5	11.5	8.5	6.0	3.5	10.3	16.7	61.8	22.1	8.9
4	41.5	NNW	12:10	15.1	13.0	10.5	12.5	12.0	11.5	8.5	6.0	4.0	15.5	16.7	92.8	29.6	4.7
5	31.5	SW	15:19	9.7	16.0	11.0	13.0	12.0	11.5	8.5	6.0	4.0	13.8	16.7	82.5	26.1	10.1
6	47.8	SSW	12:32	19.0	19.5	14.0	15.0	13.0	11.5	8.5	6.5	4.0	9.6	16.8	57.3	21.3	12.5
7	71.7	NW	16:09	27.8	12.5	15.0	16.0	14.0	11.5	8.5	6.5	4.0	0.8	16.8	4.8	6.2	5.3
8	50.6	NNW	1:03	24.3	10.0	11.0	12.5	12.0	11.5	8.5	6.5	4.0	6.4	16.8	38.1	18.8	11.6
9	42.4	W	17:03	14.0	14.0	10.0	12.0	11.5	11.0	9.0	6.5	4.0	9.9	16.8	58.9	19.6	10.5
10	44.6	WNW	11:38	17.5	14.0	12.0	14.0	12.5	11.0	9.0	7.0	4.0	11.5	16.8	68.3	21.6	11.3
11	28.4	NNW	15:05	10.0	14.5	11.0	13.0	12.0	11.0	9.0	7.0	4.0	12.5	16.9	74.1	25.5	9.7
12	33.3	E	21:49	14.2	12.5	12.5	14.5	12.5	11.5	9.0	7.0	4.0	6.6	16.9	39.1	18.5	12.3
13	30.6	ESE	15:02	15.1	15.0	14.0	15.5	13.0	11.5	9.0	7.0	4.0	0.0	16.9	0.0	6.9	6.2
14	40.5	N	17:18	15.0	14.5	13.5	14.5	12.5	11.5	9.0	7.0	4.0	3.6	16.9	21.3	8.4	6.3
15	26.9	WNW	11:04	9.5	14.0	12.0	13.5	12.0	11.5	9.0	7.0	4.0	7.1	16.9	42.0	20.8	10.2
16	20.0	NE	17:02	5.9	14.5	13.5	15.0	13.0	12.0	9.0	7.0	4.5	6.9	16.9	40.8	15.6	9.4
17	49.7	NW	15:04	9.6	18.5	13.0	14.5	13.5	12.0	9.5	7.5	4.5	10.7	16.9	63.2	22.2	8.7
18	47.0	NNW	14:46	8.4	18.0	14.0	15.5	14.0	12.5	9.5	7.5	4.5	8.1	16.9	47.8	16.1	9.1
19	42.0	SW	19:42	7.6	15.0	14.0	15.5	13.5	12.5	9.5	7.5	4.5	5.8	16.9	34.3	18.8	10.3
20	24.7	NE	21:50	9.2	18.0	14.5	16.0	14.5	13.0	9.5	7.5	4.5	12.1	16.9	71.4	22.4	12.1
21	38.8	NE	8:01	18.3	12.0	14.5	16.5	15.0	13.0	10.0	7.5	4.5	0.0	16.9	0.0	5.8	5.2
22	30.2	NNE	11:53	15.3	8.5	11.0	13.0	12.5	13.0	9.5	7.5	4.0	0.2	16.9	1.2	8.2	7.3
23	25.8	SSE	15:30	9.9	8.0	10.0	12.0	11.0	12.0	9.5	7.5	3.5	3.3	16.9	19.5	15.5	11.6
24	19.9	ENE	8:49	8.4	11.5	11.0	13.0	12.0	12.0	9.5	8.0	4.5	14.3	16.9	84.5	27.5	9.4
25	52.9	SW	19:31	11.6	15.5	12.0	14.0	13.0	12.0	10.0	8.0	4.5	10.7	16.9	63.2	22.7	7.3
26	38.0	NW	2:12	11.4	19.0	14.5	16.0	14.0	12.5	10.0	8.0	4.5	11.0	16.9	65.1	24.9	7.2
27	31.0	SE	16:53	5.3	19.0	15.5	17.0	15.5	13.0	10.0	8.0	5.0	9.9	16.9	58.6	22.4	5.2
28	25.8	WNW	18:44	11.2	16.5	16.5	17.5	15.5	13.5	10.0	8.0	4.5	4.7	16.9	27.8	15.3	10.8
29	34.9	NE	22:49	12.7	17.0	16.0	17.0	15.5	14.0	10.0	8.0	4.0	4.3	16.9	25.5	15.2	9.3
30	38.6	W	16:20	12.3	19.0	16.0	17.5	16.0	14.0	10.5	8.5	5.0	14.7	16.9	87.2	27.1	5.6
Total													245.8	505.5	48.6	570.3	266.5
Mean					14.9	13.1	14.7	13.2	12.1	9.2	7.1	4.2					
Extreme	75.1	NW	12:51	13.6													
Date	3																

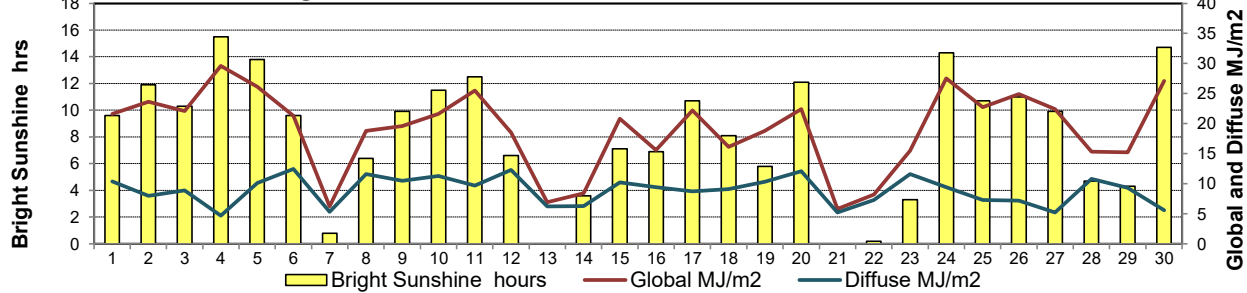
### GLOSSARY OF TERMS

Degree-days	Radiation
T <sub>m</sub> Mean Temperature	Bright Sunshine is the unobstructed direct radiation from the sun, as opposed to the shading of a location by clouds or by other atmospheric obstructions.
Growing (T <sub>m</sub> -5°C); if T <sub>m</sub> ≤ 5°C then GDD = 0	
Heating (18°C-T <sub>m</sub> ); if T <sub>m</sub> ≥ 18°C then HDD = 0	
Cooling (T <sub>m</sub> -18°C); if T <sub>m</sub> ≤ 18°C then CDD = 0	Diffuse is radiation reaching the earth's surface after having been scattered from the direct solar beam
T Trace of Precipitation	Global is the sum of the direct solar and diffuse radiation
SOG Depth of snow-on-the-ground	
Red Cell no data available	Relative Humidity The ratio of the air's water vapour content to its water vapour capacity which changes with temperature.
Red Number manual calculation	Air Pressure The force exerted by the weight of a column of air above a given point
	Wind Gust The daily highest instantaneous value recorded irrespective of direction and/or duration

**Wind Speed for June 2025**

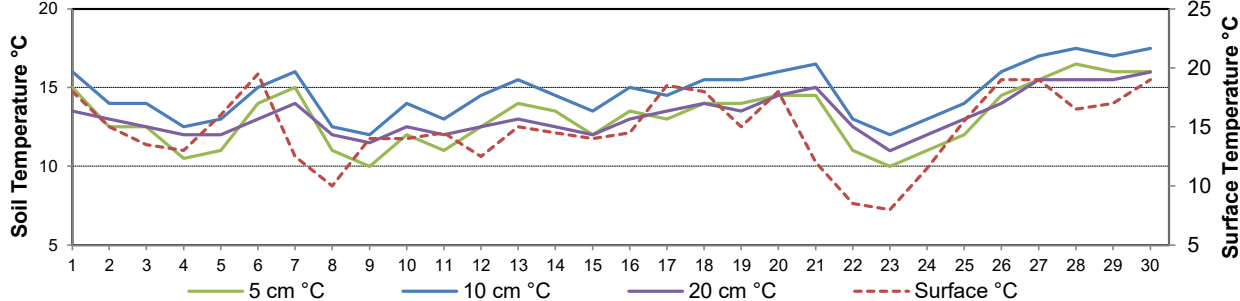


**Bright Sunshine, Global and Diffuse Radiation for June 2025**



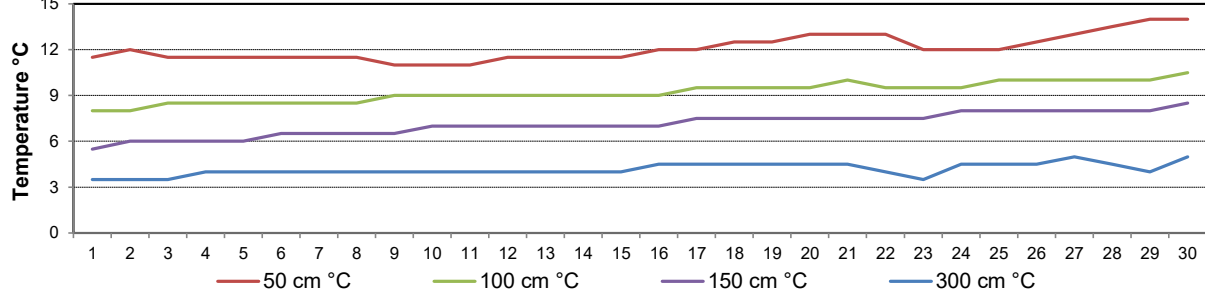
**Soil Temperatures for June 2025**

Surface - 20cm Level



**Soil Temperatures for June 2025**

50 - 300cm Level





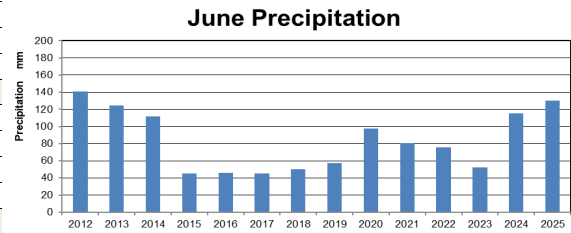
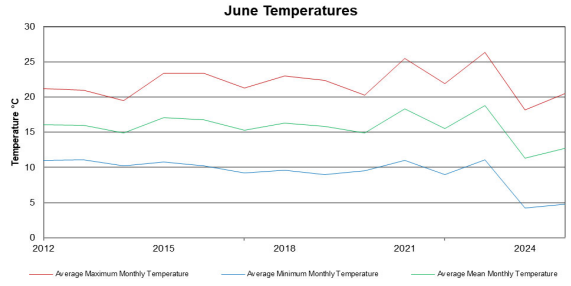
# SRC CLIMATE REFERENCE STATION DAILY DATA REPORT

## CONSERVATION LEARNING CENTRE

Saskatchewan 53.03°N 105.77°W 451m asl Estab. 2011

Preliminary **June 2025**

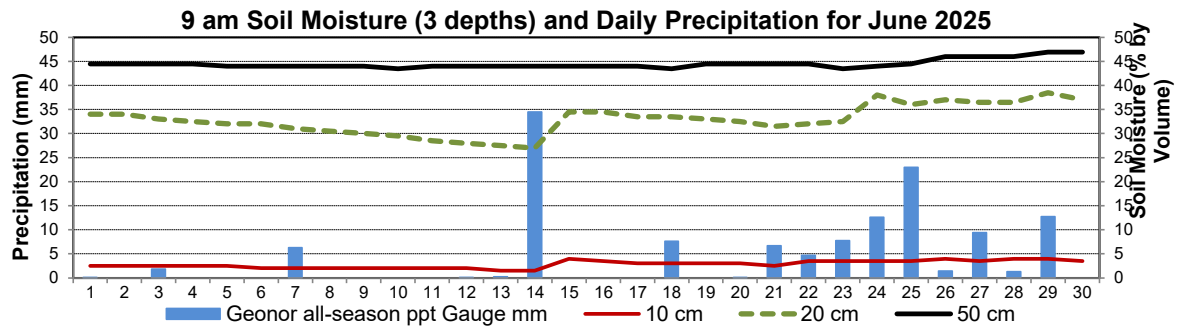
Day	2 meter Wind Speed			Soil Moisture at 0900 hrs (rounded to the 0.5%)								
	Daily Average	Max ½ hr Avg	½ hr Extreme Max	10 cm	20 cm	50 cm						
	km/h	km/h	km/h	% by volume (soil type is Clay Loam)								
1	17.0	24.8	37.1	2.5	34.0	44.5						
2	14.0	24.7	35.8	2.5	34.0	44.5						
3	14.0	28.0	58.3	2.5	33.0	44.5						
4	9.0	22.4	33.9	2.5	32.5	44.5						
5	5.0	16.3	27.0	2.5	32.0	44.0						
6	14.0	26.6	41.6	2.0	32.0	44.0						
7	21.0	38.7	51.3	2.0	31.0	44.0						
8	18.0	27.3	39.4	2.0	30.5	44.0						
9	10.0	23.4	34.4	2.0	30.0	44.0						
10	13.0	23.6	35.0	2.0	29.5	43.5						
11	5.0	14.6	23.7	2.0	28.5	44.0						
12	9.0	17.3	24.7	2.0	28.0	44.0						
13	10.0	14.4	25.0	1.5	27.5	44.0						
14	10.0	19.2	30.0	1.5	27.0	44.0						
15	6.0	14.3	22.0	4.0	34.5	44.0						
16	3.0	8.9	15.2	3.5	34.5	44.0						
17	6.0	15.8	37.3	3.0	33.5	44.0						
18	5.0	18.8	35.6	3.0	33.5	43.5						
19	4.0	20.2	35.6	3.0	33.0	44.5						
20	5.0	10.4	18.3	3.0	32.5	44.5						
21	13.0	21.4	29.1	2.5	31.5	44.5						
22	10.0	15.3	23.3	3.5	32.0	44.5						
23	7.0	13.7	21.2	3.5	32.5	43.5						
24	5.0	9.3	16.6	3.5	38.0	44.0						
25	7.0	15.8	42.1	3.5	36.0	44.5						
26	8.0	14.1	27.7	4.0	37.0	46.0						
27	3.0	12.0	23.5	3.5	36.5	46.0						
28	8.0	14.0	20.4	4.0	36.5	46.0						
29	9.0	16.2	22.9	4.0	38.5	47.0						
30	8.0	17.6	29.3	3.5	37.0	47.0						
Total												
Mean				3	33	44.5						
Extreme	21.0	38.7	58.3	4	38.5	47						
Date	New Record	New Record	0	0	0	0						



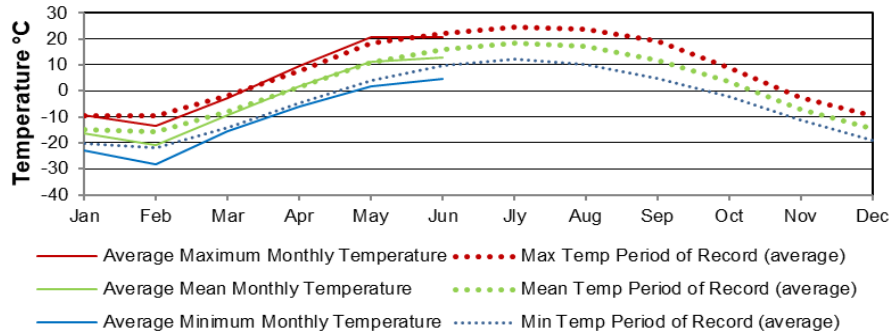
June 2025 had second greatest precipitation amounts. Only 2012 was higher with 140.4mm

**SRC proudly recognizes the following CRS supporters:**

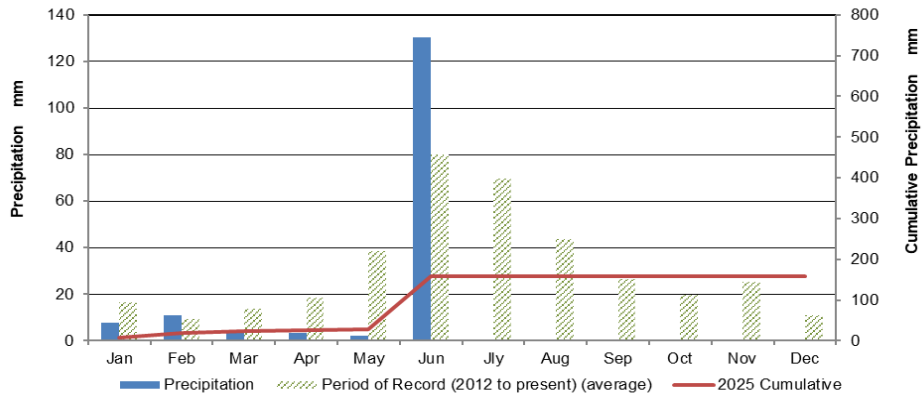




2025 Monthly Temperatures

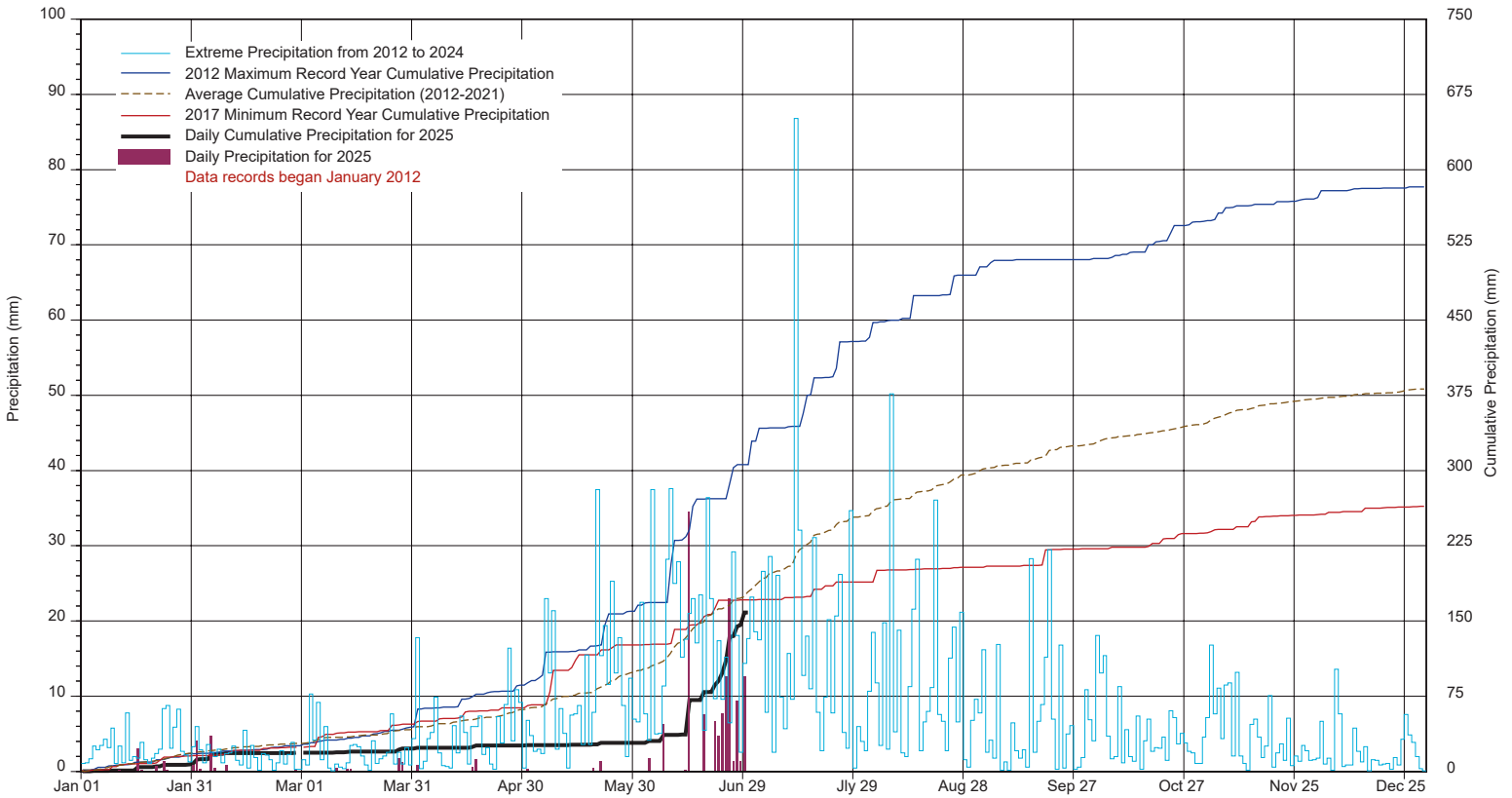


2025 Monthly Precipitation

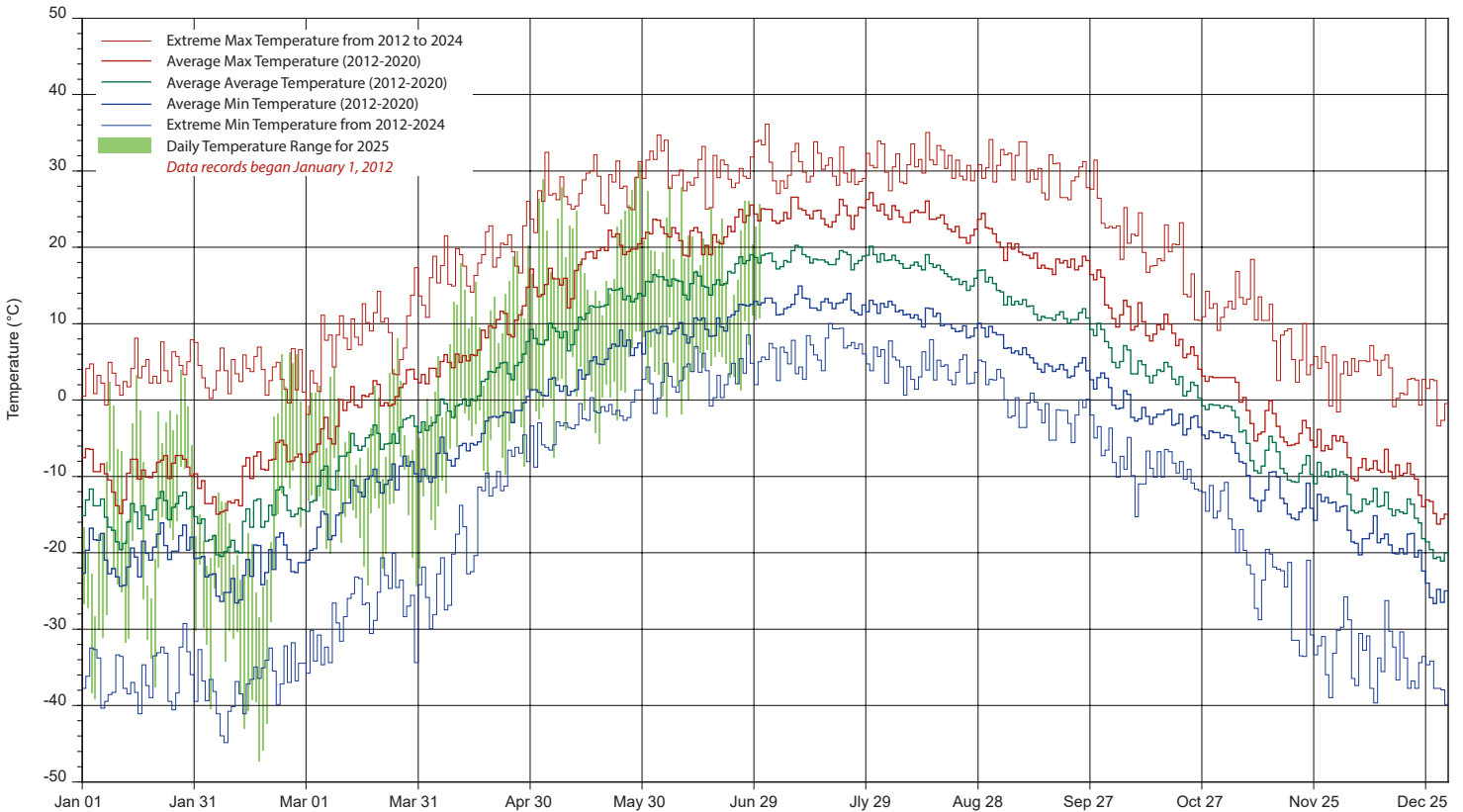


# SRC's CLIMATE REFERENCE STATION at the Conservation Learning Centre

## 2025 PRECIPITATION AND AVERAGE



## 2025 TEMPERATURES AND AVERAGES



SRC proudly recognizes the following CRS supporters:

