



SRC CLIMATE REFERENCE STATION DAILY DATA REPORT

CONSERVATION LEARNING CENTRE

Saskatchewan 53.03°N 105.77°W Estab. 2011

Preliminary

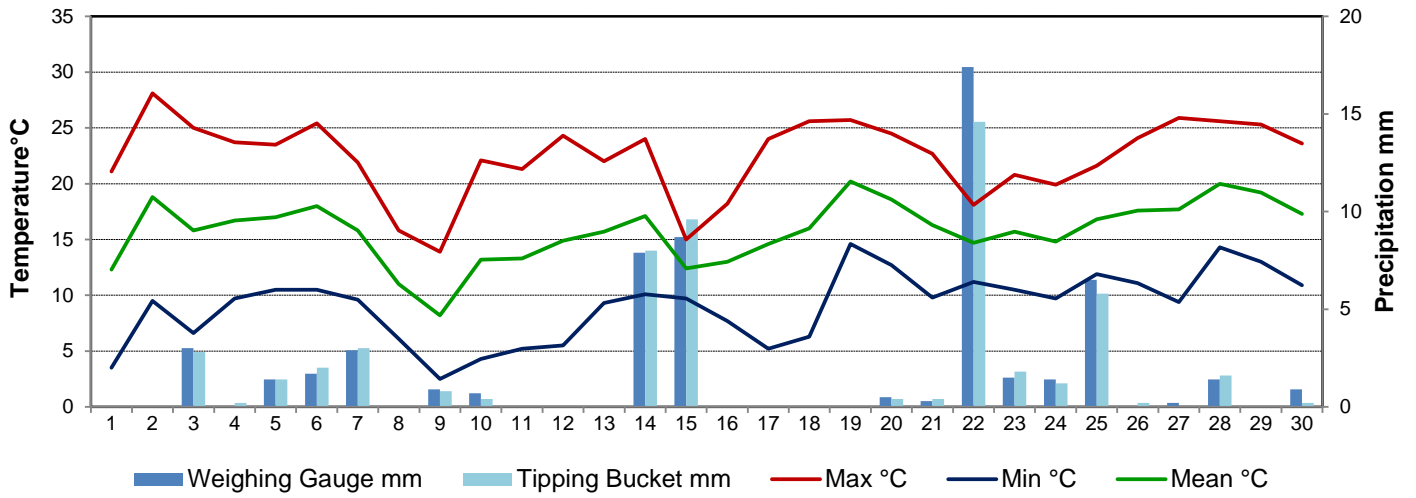
June 2019

Day	Temperature			Degree-days			Precipitation			Relative Humidity		Station Pressure <i>corrected to sea level</i>	
	Max	Min	Mean	Growing	Heating	Cooling	Weighing Gauge	Tipping Bucket	Notes	Max ½ hr Avg	Min ½ hr Avg	Max ½ hr Avg	Min ½ hr Avg
	°C	°C	°C	5°C base	18°C base	18°C base	mm	mm		%	%	mbar	mbar
1	21.1	3.5	12.3	7.3	5.7	0.0	0.0	0.0		100	30	1016	1012
2	28.1	9.5	18.8	13.8	0.0	0.8	0.0	0.0		70	27	1012	1002
3	25.0	6.6	15.8	10.8	2.2	0.0	3.0	2.8		94	37	1006	998
4	23.7	9.7	16.7	11.7	1.3	0.0	0.0	0.2		95	24	1011	1004
5	23.5	10.5	17.0	12.0	1.0	0.0	1.4	1.4		96	25	1011	1009
6	25.4	10.5	18.0	13.0	0.0	0.0	1.7	2.0		89	35	1009	1001
7	21.9	9.6	15.8	10.8	2.2	0.0	2.9	3.0		98	55	1003	998
8	15.8	6.1	11.0	6.0	7.0	0.0	0.0	0.0		85	37	1016	1003
9	13.9	2.5	8.2	3.2	9.8	0.0	0.9	0.8		96	41	1019	1016
10	22.1	4.3	13.2	8.2	4.8	0.0	0.7	0.4		90	27	1019	1014
11	21.3	5.2	13.3	8.3	4.7	0.0	0.0	0.0		97	33	1020	1015
12	24.3	5.5	14.9	9.9	3.1	0.0	0.0	0.0		100	37	1019	1010
13	22.0	9.3	15.7	10.7	2.3	0.0	0.0	0.0		95	55	1010	1003
14	24.0	10.1	17.1	12.1	0.9	0.0	7.9	8.0		100	53	1007	1003
15	15.0	9.7	12.4	7.4	5.6	0.0	8.7	9.6		100	91	1014	1007
16	18.2	7.7	13.0	8.0	5.0	0.0	0.0	0.0		100	49	1017	1014
17	24.0	5.2	14.6	9.6	3.4	0.0	0.0	0.0		100	30	1019	1016
18	25.6	6.3	16.0	11.0	2.0	0.0	0.0	0.0		100	30	1016	1009
19	25.7	14.6	20.2	15.2	0.0	2.2	0.0	0.0		72	26	1009	1003
20	24.5	12.7	18.6	13.6	0.0	0.6	0.5	0.4		94	32	1009	1004
21	22.7	9.8	16.3	11.3	1.7	0.0	0.3	0.4		100	42	1012	1009
22	18.1	11.2	14.7	9.7	3.3	0.0	17.4	14.6		98	66	1009	1001
23	20.8	10.5	15.7	10.7	2.3	0.0	1.5	1.8		99	58	1002	1001
24	19.9	9.7	14.8	9.8	3.2	0.0	1.4	1.2		99	68	1003	1001
25	21.6	11.9	16.8	11.8	1.2	0.0	6.5	5.8		98	59	1008	1003
26	24.1	11.1	17.6	12.6	0.4	0.0	0.0	0.2		99	40	1015	1008
27	25.9	9.4	17.7	12.7	0.3	0.0	0.2	0.0		100	38	1018	1016
28	25.6	14.3	20.0	15.0	0.0	2.0	1.4	1.6		93	58	1018	1015
29	25.3	13.0	19.2	14.2	0.0	1.2	0.0	0.0		100	33	1015	1008
30	23.6	10.9	17.3	12.3	0.7	0.0	0.9	0.2		87	40	1013	1010
Total				322.7	74.1	6.8	57.3	54.4					
Avg	22.4	9.0	15.8				133.9	Cumulative ppt					
Extreme	28.1	2.5					17.4	14.6		100	24	1020	998
Date	2	9					22	22		1	4	11	3

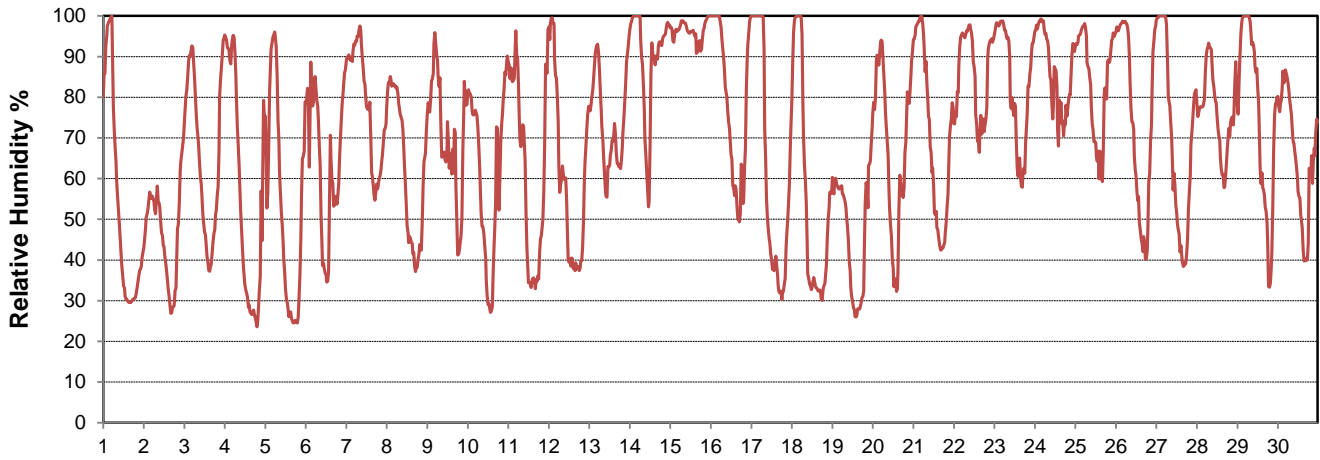
SRC proudly recognizes the following CRS supporters:



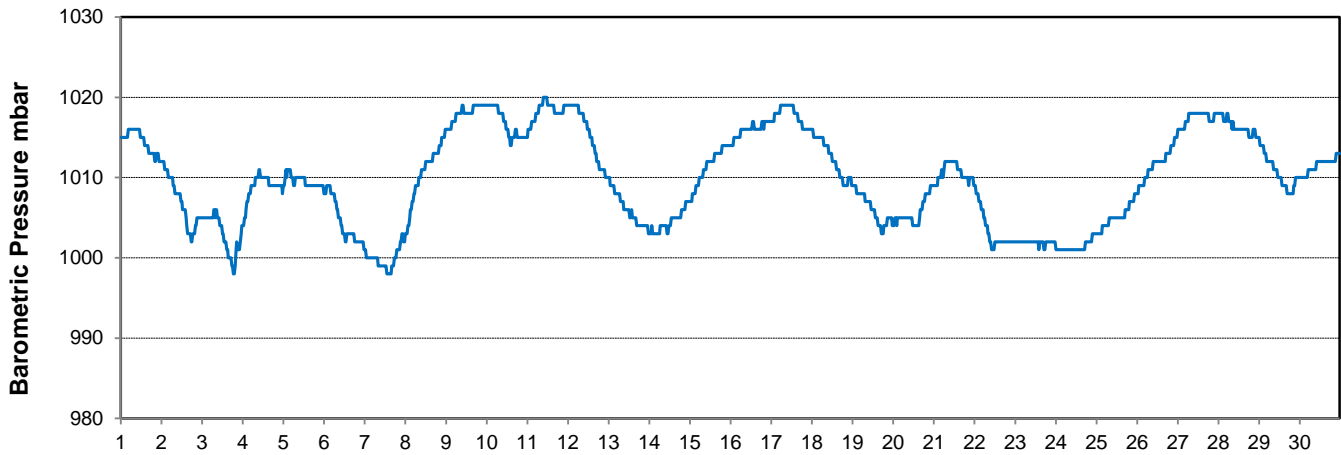
Temperature and Precipitation for June 2019



Relative Humidity for June 2019



Barometric Pressure Corrected to Sea Level for June 2019





SRC CLIMATE REFERENCE STATION DAILY DATA REPORT

CONSERVATION LEARNING CENTRE

Saskatchewan 53.03°N 105.77°W Estab. 2011

Preliminary

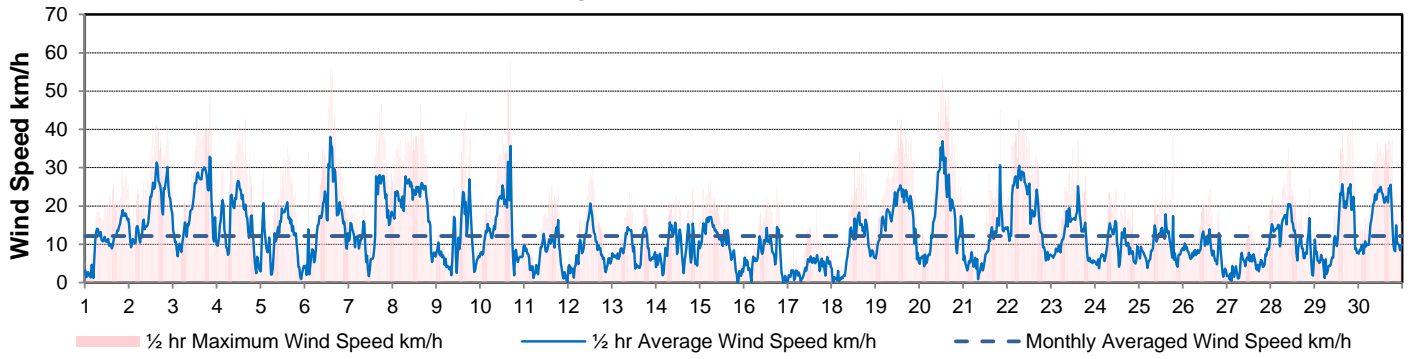
June 2019

Day	Wind Gust			Soil Temperatures at 0900hrs								Radiation				
	Max	Direction	Time	Surface	5 cm	10 cm	20 cm	50 cm	100 cm	150 cm	300 cm	Bright Sunshine	Possible	% Possible	Global	Diffuse
	km/h			°C	°C	°C	°C	°C	°C	°C	°C	hours	hours		MJ/m ²	MJ/m ²
1	29.5	E	20:54	12.5	9.5	10.0	10.0	8.0	5.5	3.5	3.0	12.9	16.6	77.8	24.2	10.2
2	41.4	E	15:16	13.0	10.5	10.5	10.0	8.0	5.5	3.5	3.0	7.5	16.6	45.1	20.1	9.8
3	49.5	N	20:35	13.5	10.5	11.0	10.5	8.5	5.5	4.0	3.0	10.9	16.7	65.5	21.4	11.0
4	42.9	W	15:48	15.5	11.0	11.5	10.5	8.5	6.0	4.0	3.0	14.5	16.7	86.9	28.2	5.5
5	35.7	NNW	14:51	16.5	12.0	12.0	11.0	9.0	6.0	4.0	3.0	12.9	16.7	77.2	28.9	4.6
6	56.0	SSW	14:20	14.0	12.0	12.5	11.5	9.0	6.0	4.5	3.0	4.7	16.7	28.1	14.6	10.3
7	46.7	WSW	18:22	12.0	12.0	12.5	11.5	9.0	6.5	4.5	3.0	7.4	16.8	44.2	16.5	10.6
8	46.4	WNW	15:25	9.0	11.5	12.0	11.5	9.5	6.5	4.5	3.0	6.8	16.8	40.5	20.3	10.7
9	44.6	NW	16:13	10.5	10.0	10.5	10.5	9.5	6.5	4.5	3.0	8.7	16.8	51.8	17.6	8.6
10	58.0	NW	16:51	15.0	9.5	10.0	10.0	9.0	7.0	5.0	3.0	10.0	16.8	59.4	22.0	7.2
11	25.2	WNW	15:06	12.5	10.5	10.5	10.5	9.0	7.0	5.0	3.0	12.7	16.9	75.4	24.5	8.4
12	30.6	S	13:32	15.5	11.0	11.0	11.0	9.5	7.0	5.0	3.0	11.7	16.9	69.4	22.6	12.0
13	23.6	SSW	9:36	19.0	12.0	12.0	11.5	9.5	7.0	5.0	3.0	4.8	16.9	28.4	11.2	8.7
14	24.6	NE	20:21	18.5	12.0	12.0	11.5	9.5	7.0	5.0	3.5	5.5	16.9	32.6	13.0	7.5
15	26.8	E	5:58	10.0	12.5	13.0	12.0	9.5	7.0	5.0	3.0	0.0	16.9	0.0	6.0	5.3
16	25.3	SSE	18:04	12.5	12.0	12.0	11.5	10.0	7.5	5.5	3.0	6.5	16.9	38.4	16.5	12.4
17	19.9	ENE	15:45	15.0	11.0	11.5	11.5	10.0	7.5	5.5	3.5	13.4	16.9	79.2	27.7	4.7
18	34.8	SSE	15:23	18.0	12.0	12.5	12.0	10.0	7.5	5.5	3.5	13.9	16.9	82.1	25.1	8.0
19	42.8	SSE	12:16	20.5	13.5	13.5	12.5	10.5	8.0	5.5	3.5	12.1	16.9	71.5	26.9	7.3
20	54.2	ESE	12:41	18.5	14.0	14.0	13.0	11.0	8.0	6.0	3.5	6.1	16.9	36.0	16.4	10.1
21	45.1	ENE	20:18	15.0	13.0	13.5	13.0	11.0	8.0	6.0	3.5	13.0	16.9	76.7	25.1	9.5
22	42.7	NE	6:19	12.0	14.0	14.0	13.5	11.0	8.0	6.0	3.5	4.6	16.9	27.2	15.6	8.4
23	37.1	NW	15:00	14.5	13.5	14.0	13.0	11.0	8.0	6.0	3.5	6.9	16.9	40.8	17.8	9.1
24	25.1	NW	11:17	15.0	13.5	13.5	13.0	11.0	8.5	6.0	3.5	6.8	16.9	40.2	17.9	10.9
25	40.1	N	18:42	17.0	14.5	14.5	13.5	11.5	8.5	6.5	3.5	7.9	16.9	46.7	21.5	10.6
26	24.4	NW	15:04	16.5	14.5	14.5	14.0	11.5	8.5	6.5	3.5	11.7	16.9	69.2	25.6	7.3
27	19.6	ENE	23:59	18.5	14.5	15.0	14.5	12.0	9.0	6.5	4.0	13.5	16.9	79.9	26.0	9.1
28	34.8	E	9:51	15.0	16.0	16.0	15.0	12.5	9.0	6.5	3.5	5.6	16.9	33.2	17.7	8.4
29	42.4	NW	20:59	19.0	16.5	16.5	15.5	13.0	9.5	7.0	4.0	7.7	16.9	45.6	18.4	6.4
30	41.0	WNW	17:23	17.0	15.5	16.0	15.5	13.0	9.5	7.0	4.0	13.5	16.9	80.1	25.9	7.1
Total												274.2	505.3	54.3	615.2	259.7
Mean				15.0	12.5	12.7	12.2	10.1	7.4	5.3	3.3					
Extreme	58.0	NW	16:51													
Date	10															

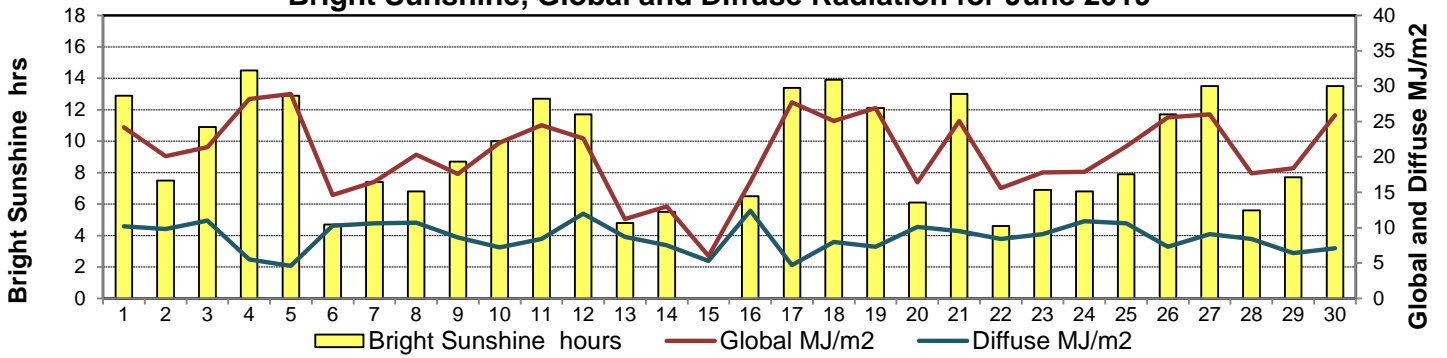
GLOSSARY OF TERMS

Degree-days	Radiation
T _m Mean Temperature	Bright Sunshine is the unobstructed direct radiation from the sun, as opposed to the shading of a location by clouds or by other atmospheric obstructions.
Growing (T _m -5°C); if T _m ≤ 5°C then GDD = 0	
Heating (18°C-T _m); if T _m ≥ 18°C then HDD = 0	
Cooling (T _m -18°C); if T _m ≤ 18°C then CDD = 0	Diffuse is radiation reaching the earth's surface after having been scattered from the direct solar beam
T Trace of Precipitation	Global is the sum of the direct solar and diffuse radiation
SOG Depth of snow-on-the-ground	Relative Humidity The ratio of the air's water vapour content of its water vapour capacity which changes with temperature.
Red Cell no data available	Air Pressure The force exerted by the weight of a column of air above a given point
Red Number manual calculation	Wind Gust The daily highest instantaneous value recorded irrespective of direction and/or duration

Wind Speed for June 2019

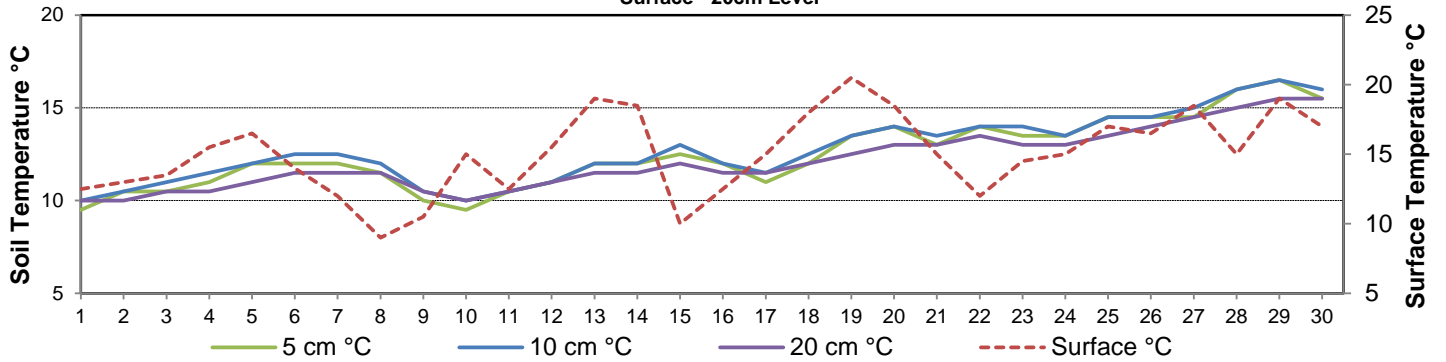


Bright Sunshine, Global and Diffuse Radiation for June 2019



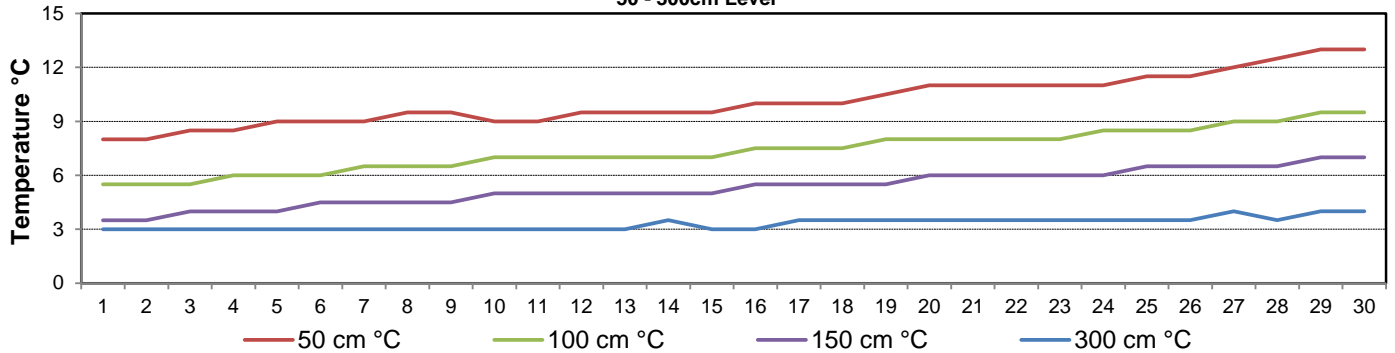
Soil Temperatures for June 2019

Surface - 20cm Level

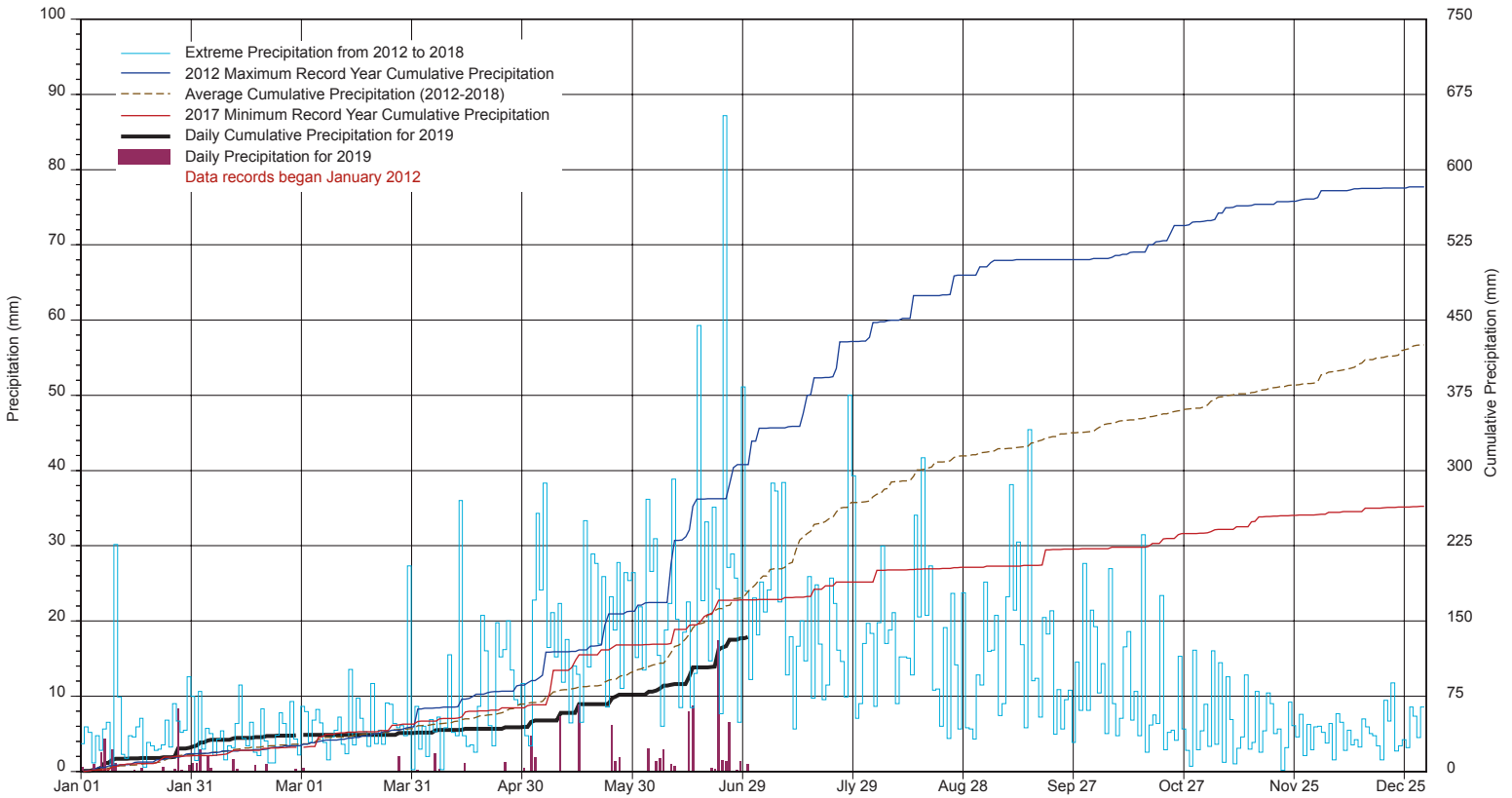


Soil Temperatures for June 2019

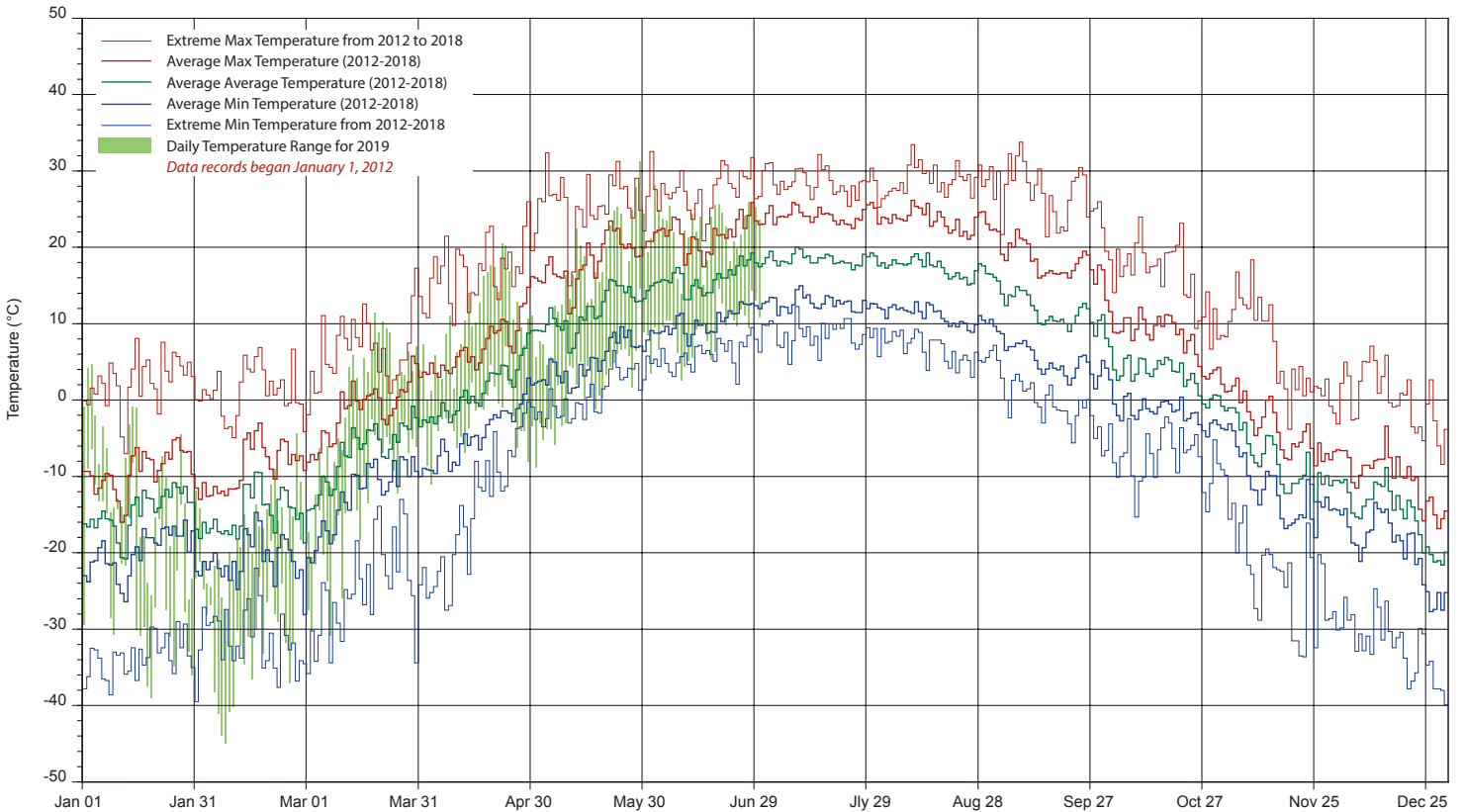
50 - 300cm Level



SRC's CLIMATE REFERENCE STATION at the Conservation Learning Centre 2019 PRECIPITATION AND AVERAGE



2019 TEMPERATURES AND AVERAGES



SRC proudly recongnizes the following CRS supporters:

