



# SRC CLIMATE REFERENCE STATION DAILY DATA REPORT

## CONSERVATION LEARNING CENTRE

Saskatchewan 53.03°N 105.77°W 451m asl Estab. 2011

Preliminary **April 2026**

Day	Temperature						Degree-days			Precipitation			Relative Humidity		Station Pressure <i>corrected to sea level</i>	
	Max	Avg Max	Min	Avg Min	Mean	Avg Mean	Growing	Heating	Cooling	Geonor all-season ppt Gauge	Notes	Snow-on-Ground 0900h	Max ½ hr Avg	Min ½ hr Avg	Max ½ hr Avg	Min ½ hr Avg
	°C	2012-2021	°C	2012-2021	°C	2012-2021	5°C base	18°C base	18°C base	mm		cm	%	%	mbar	mbar
1	-0.4	3.4	-12.2	-9.0	-6.3	-2.8	0.0	24.3	0.0	0.0		57	90	70	1017	1013
2	0.9	2.2	-8.5	-9.9	-3.8	-3.9	0.0	21.8	0.0	0.0		57	95	77	1019	1013
3	4.4	4.2	-8.7	-10.7	-2.2	-3.3	0.0	20.2	0.0	0.0		55	94	67	1023	1019
4	6.1	4.2	-6.5	-10.1	-0.2	-2.9	0.0	18.2	0.0	0.1		54	99	70	1022	1017
5	0.8	3.1	-10.9	-6.9	-5.1	-1.9	0.0	23.1	0.0	0.1		51	92	50	1034	1021
6	-1.3	5.1	-16.3	-4.8	-8.8	0.2	0.0	26.8	0.0	0.0		51	92	55	1034	1020
7	-3.4	6.0	-6.4	-6.9	-4.9	-0.4	0.0	22.9	0.0	9.6		52	97	73	1019	1003
8	4.9	5.0	-9.2	-7.8	-2.2	-1.4	0.0	20.2	0.0	2.1		81	95	36	1017	1006
9	3.3	4.3	-9.5	-8.6	-3.1	-2.2	0.0	21.1	0.0	0.2		79	93	64	1019	1014
10	5.3	6.1	-8.1	-7.6	-1.4	-0.7	0.0	19.4	0.0	0.0		75	90	52	1019	1012
11	5.3	5.0	-4.9	-5.9	0.2	-0.5	0.0	17.8	0.0	0.0		69	92	71	1011	1001
12	5.0	5.9	-2.8	-5.6	1.1	0.2	0.0	16.9	0.0	0.0		63	96	66	1009	1001
13	4.2	5.2	-1.7	-6.6	1.3	-0.7	0.0	16.7	0.0	0.0		62	95	77	1010	1004
14	12.4	6.0	-1.7	-5.6	5.4	0.2	0.4	12.6	0.0	1.0		58	99	60	1004	1000
15	3.0	5.9	-9.7	-5.8	-3.4	0.0	0.0	21.4	0.0	9.8		54	100	75	1014	995
16	-5.6	6.6	-11.9	-5.4	-8.8	0.6	0.0	26.8	0.0	0.3		52	91	66	1017	1014
17	2.7	9.2	-8.5	-4.3	-2.9	2.5	0.0	20.9	0.0	0.9		53	93	39	1016	1013
18	4.3	8.2	-7.1	-2.7	-1.4	2.8	0.0	19.4	0.0	0.0		53	86	51	1019	1012
19	4.7	9.8	-10.3	-2.2	-2.8	3.8	0.0	20.8	0.0	0.0		50	90	71	1020	1002
20	15.0	9.5	3.4	-2.1	9.2	3.7	4.2	8.8	0.0	0.0		49	84	40	1007	1002
21	17.1	10.6	2.3	-2.2	9.7	4.3	4.7	8.3	0.0	1.3		44	91	51	1008	1003
22	5.3	11.7	0.7	-2.0	3.0	4.9	0.0	15.0	0.0	0.3		38	90	80	1007	998
23	1.4	11.4	-5.5	-1.5	-2.1	5.0	0.0	20.1	0.0	7.7		36	98	88	1002	997
24	-2.8	8.6	-5.8	-1.6	-4.3	3.5	0.0	22.3	0.0	3.5		47	95	85	1003	999
25	0.4	8.3	-3.6	-2.9	-1.6	2.7	0.0	19.6	0.0	1.9		45	97	77	1009	1003
26	8.9	10.5	-4.8	-1.3	2.1	4.6	0.0	15.9	0.0	1.1		41	98	51	1017	1009
27	2.8	11.2	-6.2	-1.3	-1.7	5.0	0.0	19.7	0.0	0.0		43	95	64	1018	1016
28	11.4	12.4	-2.9	-0.3	4.3	6.1	0.0	13.7	0.0	0.0		42	85	42	1018	1016
29	9.0	14.8	-1.0	0.5	4.0	7.7	0.0	14.0	0.0	0.0		39	90	50	1020	1018
30	14.8	17.2	-3.1	1.4	5.9	9.3	0.9	12.1	0.0	0.0		35	99	38	1020	1014
Total							10.2	560.8	0.0	39.9						
Avg	4.7	7.7	-6.0	-4.7	-0.7	1.5	Monthly 2012 - 2021 Average		19.6	2012-2021 Average						
Extreme	17.1	26.0	-16.3	-30.0			29.8	495.4	0	61.0	2023 Cumulative ppt		100	36	1034	995
Date	21	2015	6	2020						61.4	Cumulative Average		15	8	5	15

Note: Red numbers indicate manual calculation; Red cell indicate data not available

Spring maintenance 28 Apr 2023 New Tipping bucket installed (TB7), general maintenance on site including dessicant changes in pyranometers and recharge Geonor

**SRC proudly recognizes the following CRS supporters:**

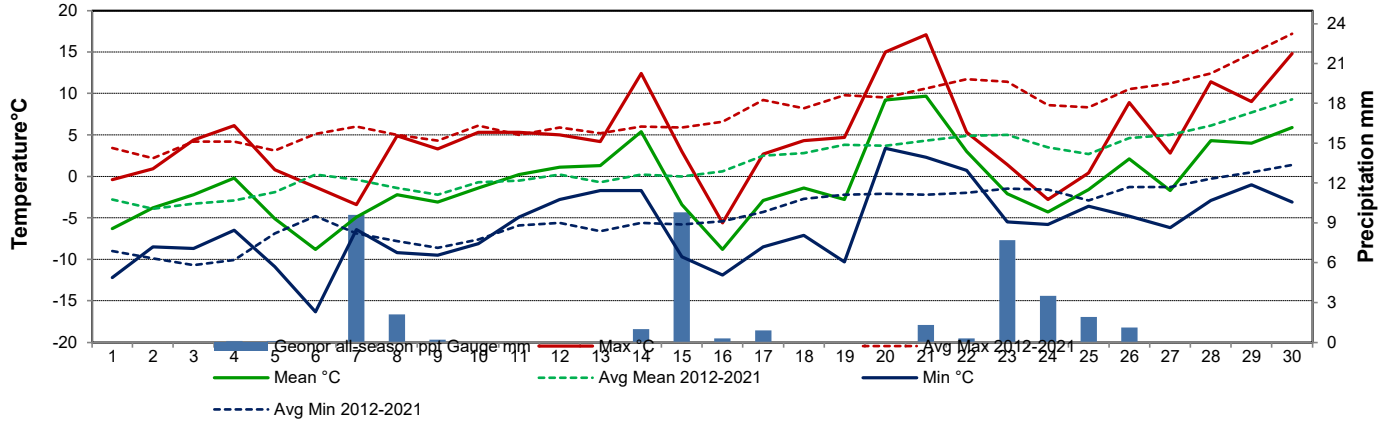


Agriculture and Agri-Food Canada

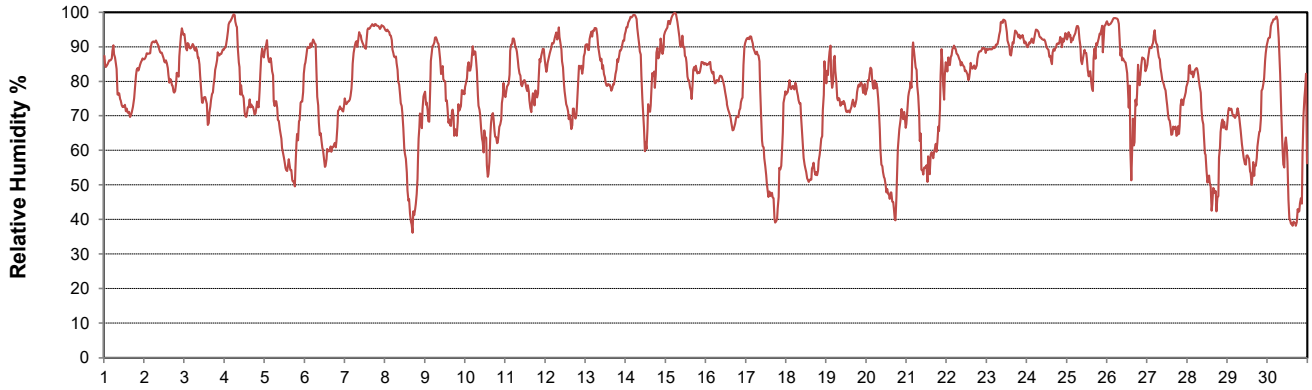
Agriculture et Agroalimentaire Canada



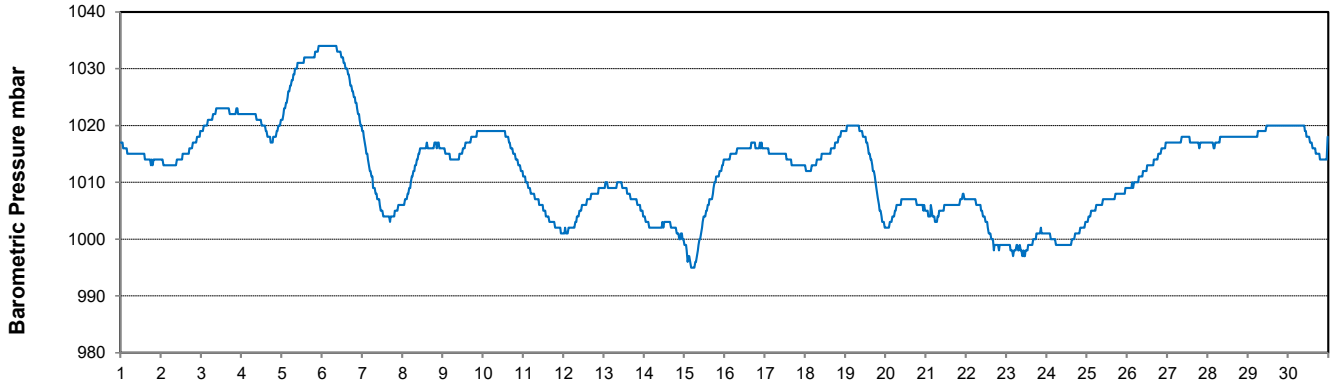
**Temperature and Precipitation for April 2026**



**Relative Humidity for April 2026**



**Barometric Pressure Corrected to Sea Level for April 2026**





# SRC CLIMATE REFERENCE STATION DAILY DATA REPORT

## CONSERVATION LEARNING CENTRE

Saskatchewan 53.03°N 105.77°W 451m asl Estab. 2011

Preliminary

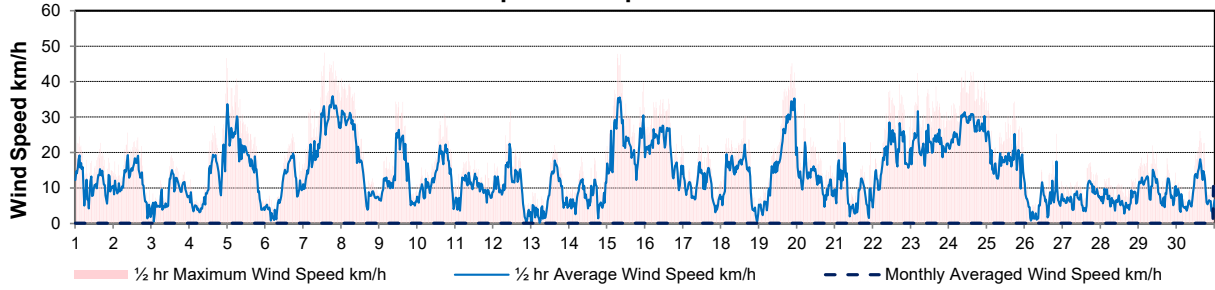
April 2026

Day	Wind Gust			Wind Speed (10 meters) Daily Average	Soil Temperatures at 0900hrs								Radiation				
	Max	Direction	Time		Surface	5 cm	10 cm	20 cm	50 cm	100 cm	150 cm	300 cm	Bright Sunshine	Possible	% Possible	Global	Diffuse
	km/h				°C	°C	°C	°C	°C	°C	°C	°C	hours	hours		MJ/m <sup>2</sup>	MJ/m <sup>2</sup>
1	24.5	S	2:14	11.5	-7.5	-1.5	-1.5	-1.5	-1.0	0.5	1.5	3.5	11.9	13.0	91.4	19.0	5.7
2	25.6	ENE	8:42	11.6	-3.5	-1.5	-1.5	-1.0	-1.0	0.5	1.0	3.5	0.0	13.1	0.0	12.7	11.8
3	19.3	S	12:38	8.4	-3.5	-1.5	-1.5	-1.0	-1.0	0.5	1.0	3.5	3.9	13.2	29.6	15.1	12.4
4	46.6	NNW	23:21	12.1	-4.0	-1.0	-1.5	-1.0	-1.0	0.5	1.0	3.5	10.6	13.2	80.1	19.3	7.2
5	40.8	NNW	5:56	17.8	-5.5	-1.0	-1.0	-1.0	-0.5	0.0	1.0	3.5	12.9	13.3	97.1	21.1	3.9
6	25.4	SSE	17:06	9.7	-10.0	-0.5	-1.0	-1.0	-0.5	0.5	1.0	3.5	12.7	13.4	95.1	21.7	3.9
7	48.2	ESE	13:04	25.5	-4.0	-0.5	-1.0	-1.0	-0.5	0.5	1.0	3.5	0.0	13.4	0.0	6.2	5.7
8	40.8	NE	0:29	17.7	-6.5	-1.0	-1.0	-1.0	-0.5	0.0	1.0	3.5	12.2	13.5	90.4	22.1	4.0
9	34.3	WNW	10:27	13.5	-2.5	-1.0	-1.0	-0.5	-0.5	0.5	1.0	3.5	4.7	13.6	34.6	17.2	13.1
10	30.9	S	17:23	13.1	-4.0	-1.0	-1.0	-0.5	-0.5	0.5	1.0	3.5	12.0	13.6	88.0	21.1	9.4
11	20.0	ESE	8:23	9.9	-1.0	-0.5	-0.5	-0.5	-0.5	0.5	1.0	3.5	10.4	13.7	75.9	19.9	9.5
12	31.5	N	10:40	10.2	-0.5	-0.5	-0.5	-0.5	-0.5	0.5	1.0	3.5	2.8	13.8	20.3	15.3	12.8
13	22.1	S	14:59	7.4	0.5	-0.5	-0.5	-0.5	-0.5	0.5	1.0	3.5	1.4	13.8	10.1	14.8	12.9
14	21.8	ENE	23:52	7.9	1.5	-0.5	-0.5	-0.5	-0.5	0.5	1.0	3.5	6.2	13.9	44.6	17.3	10.2
15	47.8	NE	6:15	23.0	-3.5	0.0	-0.5	-0.5	-0.5	0.0	1.0	3.5	0.7	14.0	5.0	14.2	12.6
16	35.2	NE	14:59	20.9	-10.5	0.0	-0.5	-0.5	-0.5	0.5	1.0	3.5	1.3	14.1	9.3	13.1	11.8
17	24.9	N	10:03	10.1	-6.5	0.0	-0.5	-0.5	-0.5	0.5	1.0	3.5	10.7	14.1	75.8	21.7	10.0
18	30.3	NW	15:12	12.8	-4.0	0.0	-0.5	-0.5	-0.5	0.5	1.0	3.5	12.9	14.2	91.0	24.0	8.8
19	45.2	S	20:48	18.2	-5.0	0.0	-0.5	0.0	-0.5	0.5	1.0	3.5	9.9	14.3	69.5	22.2	7.8
20	33.7	NW	4:35	12.4	4.0	0.0	-0.5	0.0	0.0	0.5	1.0	3.5	12.2	14.3	85.3	23.6	3.6
21	31.0	N	2:55	8.9	5.5	0.0	0.0	0.0	0.0	0.5	1.0	3.5	13.4	14.4	93.2	23.2	3.5
22	39.3	E	16:44	19.2	2.0	0.0	0.0	0.0	0.0	0.5	1.0	3.5	0.6	14.4	4.2	9.6	8.5
23	42.4	NNE	4:23	22.9	-0.5	-0.5	-0.5	-0.5	-0.5	0.0	1.0	3.0	0.0	14.5	0.0	5.8	5.3
24	43.1	N	10:30	27.2	-5.5	-0.5	-0.5	-0.5	0.0	0.0	1.0	3.0	0.2	14.6	1.4	13.9	12.7
25	34.4	NW	17:14	17.5	-1.5	-0.5	-1.0	-0.5	0.0	0.0	1.0	2.5	5.1	14.6	34.8	20.3	16.5
26	25.2	NW	19:39	5.9	-1.5	-0.5	-0.5	-0.5	0.0	0.5	1.0	3.0	5.6	14.7	38.1	19.4	14.0
27	17.2	W	17:13	7.5	-2.0	0.0	-0.5	0.0	0.0	0.5	1.0	3.0	2.0	14.8	13.5	11.7	10.0
28	15.4	SW	23:55	6.5	0.0	0.0	-0.5	-0.5	0.0	0.5	1.0	3.0	8.4	14.8	56.6	21.0	15.4
29	22.0	NW	8:56	9.9	2.5	0.0	0.0	0.0	0.0	0.5	1.0	3.0	13.8	14.9	92.6	25.8	4.0
30	21.5	E	14:37	8.3	2.5	0.0	0.0	0.0	0.0	0.5	1.0	3.0	14.3	15.0	95.6	25.1	6.0
Total													212.8	420.1	50.7	537.4	273.0
Mean					-2.5	-0.5	-0.7	-0.5	-0.4	0.4	1.0	3.4					
Extreme	48.2	ESE	13:04														
Date	7																

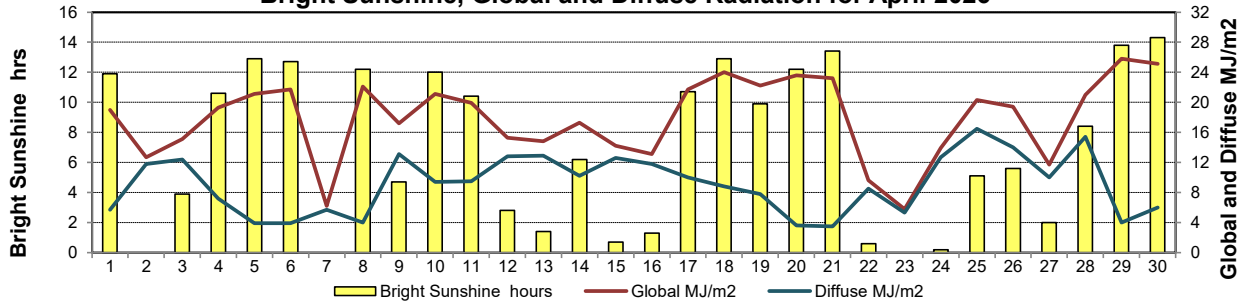
### GLOSSARY OF TERMS

Degree-days	Radiation
T <sub>m</sub> Mean Temperature	Bright Sunshine is the unobstructed direct radiation from the sun, as opposed to the shading of a location by clouds or by other atmospheric obstructions.
Growing (T <sub>m</sub> -5°C); if T <sub>m</sub> ≤ 5°C then GDD = 0	
Heating (18°C-T <sub>m</sub> ); if T <sub>m</sub> ≥ 18°C then HDD = 0	
Cooling (T <sub>m</sub> -18°C); if T <sub>m</sub> ≤ 18°C then CDD = 0	Diffuse is radiation reaching the earth's surface after having been scattered from the direct solar beam
T Trace of Precipitation	Global is the sum of the direct solar and diffuse radiation
SOG Depth of snow-on-the-ground	Relative Humidity The ratio of the air's water vapour content to its water vapour capacity which changes with temperature.
Red Cell no data available	Air Pressure The force exerted by the weight of a column of air above a given point
Red Number manual calculation	Wind Gust The daily highest instantaneous value recorded irrespective of direction and/or duration

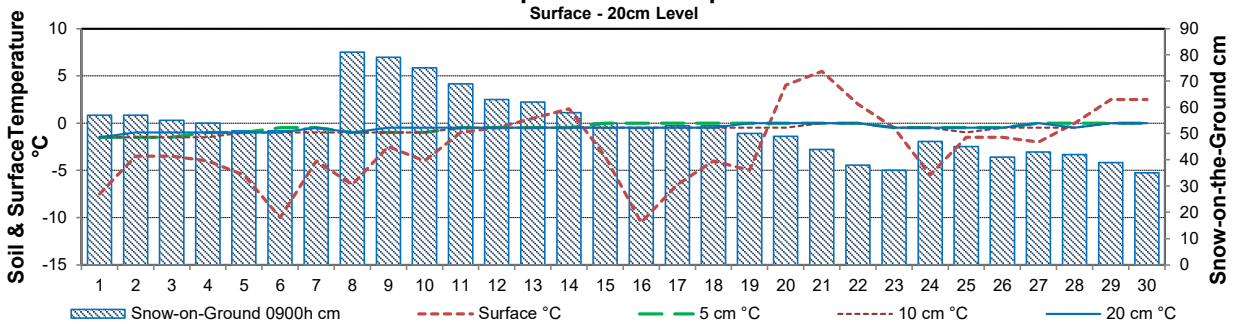
**Wind Speed for April 2026**



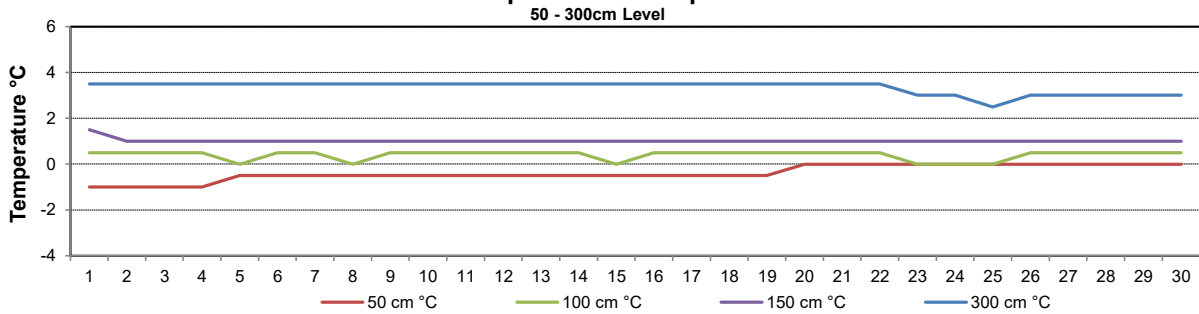
**Bright Sunshine, Global and Diffuse Radiation for April 2026**



**Soil Temperatures for April 2026**



**Soil Temperatures for April 2026**





**SRC CLIMATE REFERENCE STATION DAILY DATA REPORT**  
**CONSERVATION LEARNING CENTRE**

Saskatchewan 53.03°N 105.77°W 451m asl Estab. 2011

**April 2026**

Day	2 meter Wind Speed			Soil Moisture at 0900 hrs (rounded to the 0.5%)														
	Daily Average	Max ½ hr Avg	½ hr Extreme Max	10 cm	20 cm	50 cm												
	km/h	km/h	km/h	% by volume (soil type is Clay Loam)														
1	8.0	16.2	21.0	-10.0	-9.0	46113.5												
2	10.0	17.2	22.2	-5.5	-5.0	46114.5												
3	7.0	13.5	17.6	-5.0	-4.5	46115.5												
4	9.0	26.0	36.4	-3.0	-3.0	46116.5												
5	14.0	24.7	34.6	-6.5	-6.0	46117.5												
6	7.0	16.3	22.2	-11.5	-11.0	46118.5												
7	20.0	30.5	38.7	-6.5	-6.0	46119.5												
8	13.0	25.0	32.7	-7.5	-7.5	46120.5												
9	10.0	21.1	28.1	-3.5	-3.0	46121.5												
10	10.0	18.6	26.0	-4.0	-4.0	46122.5												
11	7.0	12.4	17.0	-1.5	-1.0	46123.5												
12	8.0	18.6	25.6	-1.5	-1.5	46124.5												
13	4.0	14.1	18.9	-0.5	-0.5	46125.5												
14	5.0	11.9	16.4	2.0	2.0	46126.5												
15	18.0	25.9	36.9	-8.0	-7.5	46127.5												
16	17.0	22.5	31.0	-13.0	-13.0	46128.5												
17	7.0	14.6	20.6	-8.5	-8.0	46129.5												
18	9.0	17.1	23.7	-4.0	-4.0	46130.5												
19	14.0	28.1	38.3	-5.5	-5.5	46131.5												
20	9.0	16.0	25.2	5.5	5.5	46132.5												
21	5.0	16.7	24.3	7.5	8.0	46133.5												
22	14.0	22.9	32.0	0.5	1.0	46134.5												
23	17.0	24.4	33.5	-2.0	-2.0	46135.5												
24	22.0	25.5	36.9	-7.0	-7.0	46136.5												
25	14.0	19.5	28.3	-4.5	-4.0	46137.5												
26	4.0	13.4	18.9	-4.0	-4.0	46138.5												
27	5.0	10.5	14.3	-2.5	-2.5	46139.5												
28	3.0	8.5	12.8	-1.5	-0.5	46140.5												
29	7.0	11.9	17.7	2.5	2.5	46141.5												
30	5.0	13.9	19.7	3.0	3.5	46142.5												
Total																		
Mean				-4	-3	46128.0												
Extreme	22.0	30.5	38.7	7.5	8	46142.5												
Date	0	New Record	New Record	0	0	0												

**SRC proudly recognizes the following CRS supporters:**



Agriculture and Agri-Food Canada

Agriculture et Agroalimentaire Canada

