



SRC CLIMATE REFERENCE STATION DAILY DATA REPORT

CONSERVATION LEARNING CENTRE

Saskatchewan 53.03°N 105.77°W 451m asl Estab. 2011

Preliminary **April 2023**

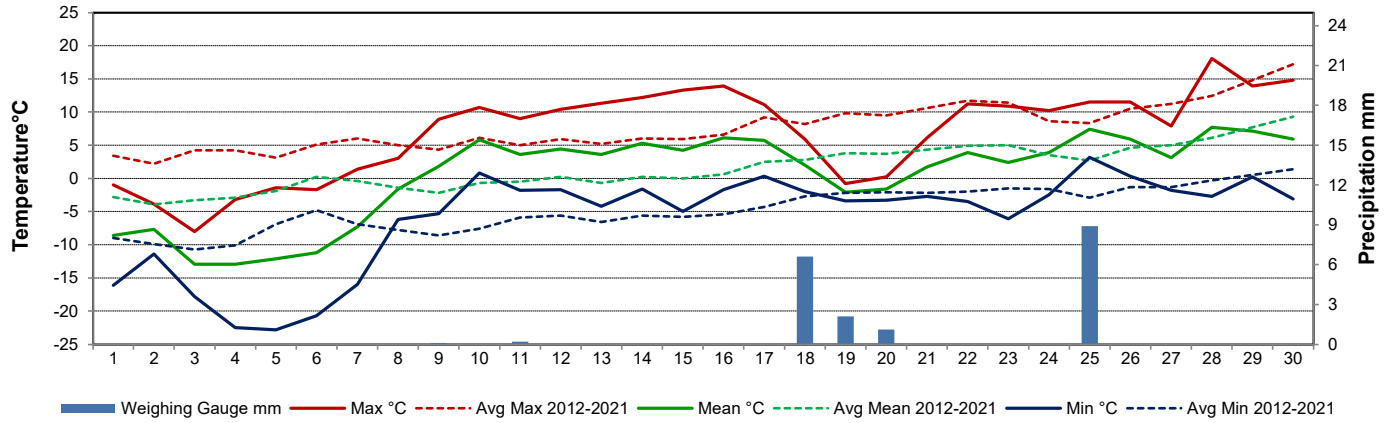
Day	Temperature						Degree-days			Precipitation			Relative Humidity		Station Pressure <i>corrected to sea level</i>	
	Max	Avg Max	Min	Avg Min	Mean	Avg Mean	Growing	Heating	Cooling	Weighing Gauge	Notes	Snow-on-Ground 0900h	Max ½ hr Avg	Min ½ hr Avg	Max ½ hr Avg	Min ½ hr Avg
	°C	2012-2021	°C	2012-2021	°C	2012-2021	5°C base	18°C base	18°C base	mm		cm	%	%	mbar	mbar
1	-1.0	3.4	-16.1	-9.0	-8.6	-2.8	0.0	26.6	0.0	0.0		51	96	78	1006	999
2	-3.9	2.2	-11.4	-9.9	-7.7	-3.9	0.0	25.7	0.0	0.0		51	90	72	1011	999
3	-8.0	4.2	-17.8	-10.7	-12.9	-3.3	0.0	30.9	0.0	0.0		50	90	59	1018	1012
4	-3.2	4.2	-22.5	-10.1	-12.9	-2.9	0.0	30.9	0.0	0.0		50	91	48	1021	1019
5	-1.4	3.1	-22.8	-6.9	-12.1	-1.9	0.0	30.1	0.0	0.0		50	90	42	1020	1016
6	-1.7	5.1	-20.7	-4.8	-11.2	0.2	0.0	29.2	0.0	0.0		50	93	52	1022	1017
7	1.4	6.0	-16.0	-6.9	-7.3	-0.4	0.0	25.3	0.0	0.0		50	90	75	1022	1012
8	3.0	5.0	-6.2	-7.8	-1.6	-1.4	0.0	19.6	0.0	0.0		50	98	75	1012	1005
9	8.9	4.3	-5.3	-8.6	1.8	-2.2	0.0	16.2	0.0	0.1		46	99	60	1011	1005
10	10.7	6.1	0.8	-7.6	5.8	-0.7	0.8	12.2	0.0	0.0		42	88	34	1011	1003
11	9.0	5.0	-1.8	-5.9	3.6	-0.5	0.0	14.4	0.0	0.2		33	93	55	1011	999
12	10.4	5.9	-1.7	-5.6	4.4	0.2	0.0	13.6	0.0	0.0		28	97	38	1009	999
13	11.3	5.2	-4.2	-6.6	3.6	-0.7	0.0	14.4	0.0	0.0		23	93	44	1010	1009
14	12.2	6.0	-1.6	-5.6	5.3	0.2	0.3	12.7	0.0	0.0		20	93	37	1015	1010
15	13.3	5.9	-5.0	-5.8	4.2	0.0	0.0	13.8	0.0	0.0		15	98	38	1019	1016
16	13.9	6.6	-1.7	-5.4	6.1	0.6	1.1	11.9	0.0	0.0		7	91	35	1019	1012
17	11.1	9.2	0.3	-4.3	5.7	2.5	0.7	12.3	0.0	0.0		-	85	52	1012	1005
18	5.9	8.2	-2.0	-2.7	2.0	2.8	0.0	16.0	0.0	6.6		-	100	60	1014	1005
19	-0.8	9.8	-3.4	-2.2	-2.1	3.8	0.0	20.1	0.0	2.1		5	100	73	1022	1015
20	0.2	9.5	-3.3	-2.1	-1.6	3.7	0.0	19.6	0.0	1.1		5	95	79	1027	1022
21	6.1	10.6	-2.7	-2.2	1.7	4.3	0.0	16.3	0.0	0.0		3	85	43	1027	1025
22	11.2	11.7	-3.5	-2.0	3.9	4.9	0.0	14.1	0.0	0.0		3	80	28	1025	1018
23	10.9	11.4	-6.1	-1.5	2.4	5.0	0.0	15.6	0.0	0.0		4	94	33	1018	1016
24	10.2	8.6	-2.5	-1.6	3.9	3.5	0.0	14.1	0.0	0.0		-	85	38	1018	1016
25	11.5	8.3	3.2	-2.9	7.4	2.7	2.4	10.6	0.0	8.9		0	96	52	1018	1007
26	11.5	10.5	0.3	-1.3	5.9	4.6	0.9	12.1	0.0	0.0		0	98	47	1010	1006
27	7.9	11.2	-1.8	-1.3	3.1	5.0	0.0	14.9	0.0	0.0		-	98	53	1018	1006
28	18.1	12.4	-2.7	-0.3	7.7	6.1	2.7	10.3	0.0	0.0		-	100	33	1018	1010
29	13.9	14.8	0.2	0.5	7.1	7.7	2.1	10.9	0.0	0.0		-	88	25	1021	1017
30	14.8	17.2	-3.1	1.4	5.9	9.3	0.9	12.1	0.0	0.0		-	99	29	1022	1017
Total							11.9	526.5	0.0	19.0						
Avg	6.9	7.7	-6.0	-4.7	0.5	1.5	Monthly 2012 - 2021 Average		19.6	2012-2021 Average						
Extreme	18.1	26.0	-22.8	-30.0			29.8	495.4	0	40.1	2023 Cumulative ppt		100	25	1027	999
Date	28	2015	5	2020						61.4	Cumulative Average		18	29	20	1

Spring maintenance 28 Apr 2023 New Tipping bucket installed (TB7), general maintenance on site including dessicant changes in pyranometers and recharge Geonor

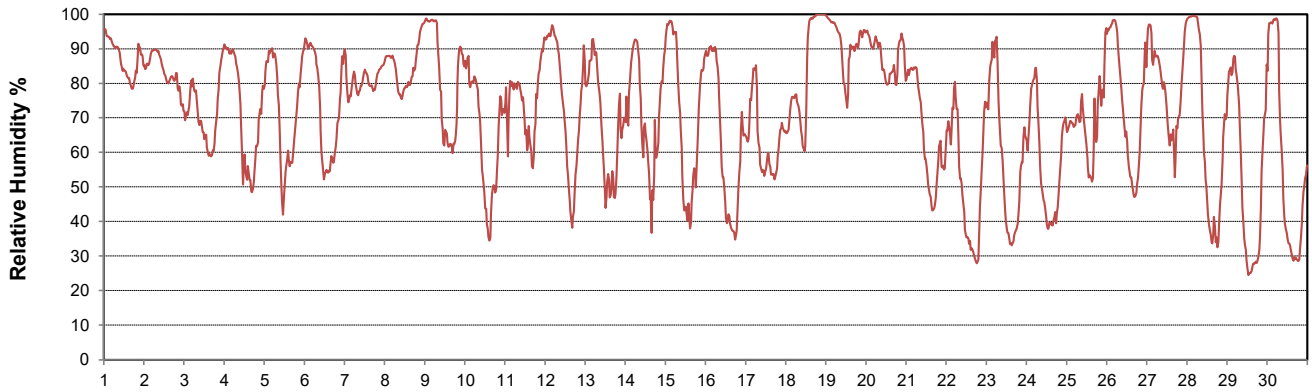
SRC proudly recognizes the following CRS supporters:



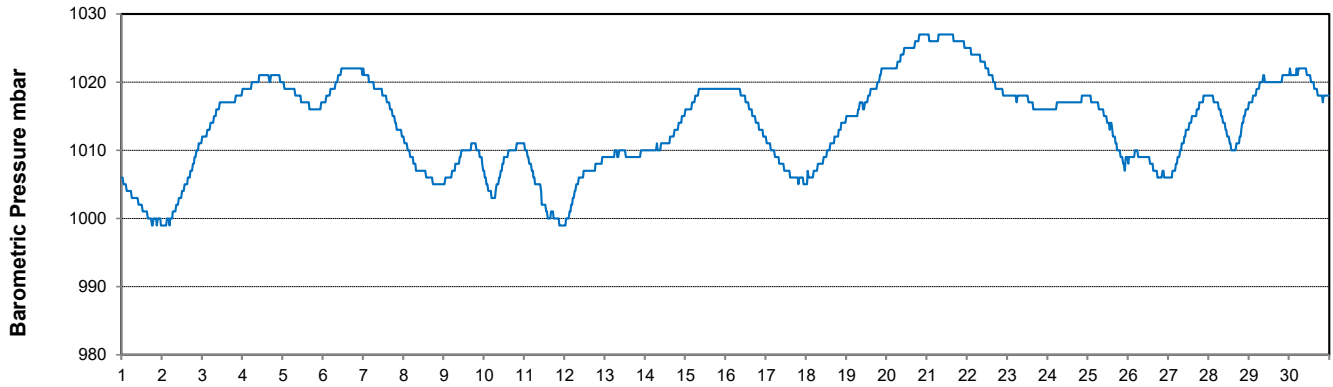
Temperature and Precipitation for April 2023



Relative Humidity for April 2023



Barometric Pressure Corrected to Sea Level for April 2023





SRC CLIMATE REFERENCE STATION DAILY DATA REPORT

CONSERVATION LEARNING CENTRE

Saskatchewan 53.03°N 105.77°W 451m asl Estab. 2011

Preliminary

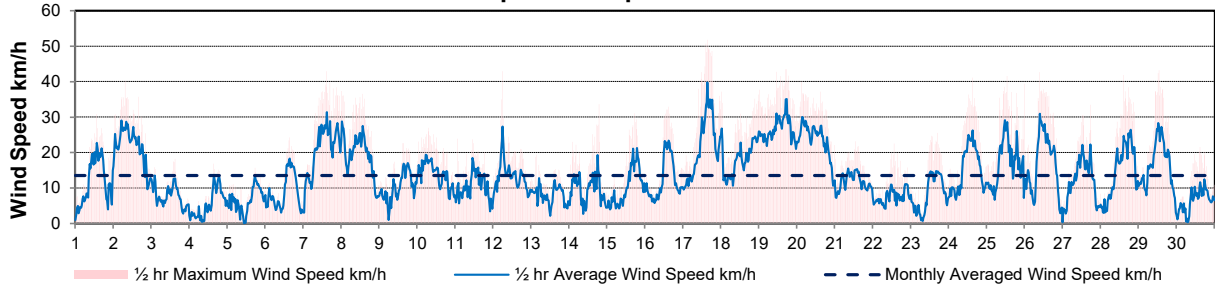
April 2023

Day	Wind Gust			Wind Speed (10 meters) Daily Average	Soil Temperatures at 0900hrs								Radiation				
	Max	Direction	Time		Surface	5 cm	10 cm	20 cm	50 cm	100 cm	150 cm	300 cm	Bright Sunshine	Possible	% Possible	Global	Diffuse
	km/h				°C	°C	°C	°C	°C	°C	°C	°C	hours	hours		MJ/m ²	MJ/m ²
1	30.9	E	13:20	12.2	-9.0	-2.0	-2.0	-1.5	-1.0	0.5	1.5	3.5	10.8	13.0	82.9	19.0	9.6
2	40.2	NE	7:24	21.4	-6.5	-2.0	-2.0	-1.5	-1.0	0.5	1.5	3.5	0.0	13.1	0.0	9.5	8.8
3	18.2	ESE	14:34	7.4	-9.0	-1.5	-1.5	-1.5	-1.0	0.5	1.5	3.5	10.9	13.2	82.8	20.1	8.9
4	16.9	SSE	15:27	5.5	-11.5	-1.5	-1.5	-1.5	-1.0	0.5	1.5	3.5	12.1	13.2	91.5	20.3	5.0
5	15.6	S	17:00	6.5	-12.0	-1.5	-1.5	-1.5	-1.0	0.5	1.5	3.5	12.5	13.3	94.1	22.1	3.7
6	24.2	S	15:10	8.7	-11.5	-2.0	-2.0	-1.5	-1.0	0.5	1.5	3.5	13.0	13.4	97.3	22.4	3.9
7	42.9	S	14:57	21.1	-9.0	-2.0	-2.0	-1.5	-1.0	0.5	1.5	3.5	13.0	13.4	96.8	22.3	4.2
8	37.3	S	0:23	19.1	-4.5	-2.0	-2.0	-1.5	-1.0	0.5	1.0	3.5	10.7	13.5	79.3	19.1	10.1
9	22.7	SSW	14:42	10.2	-2.5	-1.5	-1.5	-1.0	-1.0	0.5	1.0	3.5	12.4	13.6	91.4	22.0	5.3
10	27.0	SW	7:04	13.5	1.5	-1.0	-1.0	-1.0	-1.0	0.5	1.0	3.5	10.6	13.6	77.7	21.1	4.0
11	23.8	SW	1:28	10.3	2.0	-1.0	-1.0	-0.5	-0.5	0.5	1.0	3.5	6.1	13.7	44.5	15.8	8.1
12	42.9	SE	5:32	13.5	1.5	-0.5	-0.5	-0.5	0.0	0.0	1.0	3.5	12.9	13.8	93.7	22.3	3.5
13	19.4	N	3:01	7.9	0.0	0.0	0.0	0.0	0.0	0.0	1.0	3.0	11.9	13.8	86.0	18.1	8.5
14	33.6	ESE	18:32	9.6	2.5	0.0	0.0	0.0	0.0	0.0	1.0	3.0	9.6	13.9	69.0	18.5	7.6
15	31.0	S	17:26	10.5	2.0	0.0	0.0	0.0	0.0	0.0	1.0	3.0	9.7	14.0	69.4	18.1	5.3
16	32.9	S	14:57	12.4	4.0	0.0	0.0	0.0	0.0	0.0	1.0	3.0	13.4	14.1	95.4	22.1	3.7
17	51.8	SE	15:27	21.9	6.0	0.0	0.0	0.0	0.0	0.0	1.0	3.0	7.5	14.1	53.2	13.6	6.0
18	37.2	ESE	0:14	18.2	3.0	0.0	0.0	0.0	0.0	0.0	1.0	3.0	1.4	14.2	9.9	6.9	5.9
19	43.5	NE	16:59	26.5	-1.0	-0.5	-0.5	-0.5	0.0	0.0	1.0	3.0	1.5	14.3	10.5	11.7	10.7
20	40.1	NE	2:58	23.5	-2.5	-0.5	-0.5	-0.5	0.0	0.0	1.0	3.0	1.2	14.3	8.4	14.5	13.1
21	23.1	NE	12:35	11.7	-2.0	0.0	-0.5	-0.5	0.0	0.0	1.0	3.0	6.6	14.4	45.9	16.7	12.5
22	22.5	NW	13:24	7.5	3.0	0.0	0.0	0.0	0.0	0.5	1.0	3.5	13.7	14.4	94.9	23.7	5.4
23	25.5	ESE	16:42	8.3	2.0	0.0	0.0	0.0	0.0	0.0	1.0	3.0	13.7	14.5	94.4	24.8	4.3
24	41.1	S	14:36	15.3	4.5	0.0	0.0	0.0	0.0	0.0	1.0	3.0	12.6	14.6	86.4	21.8	8.8
25	41.5	SSE	12:35	17.0	4.0	0.5	0.5	0.0	0.0	0.5	1.0	3.0	0.3	14.6	2.0	6.1	5.2
26	42.7	NW	9:17	16.2	5.0	0.5	0.5	0.0	0.0	0.0	1.0	3.0	11.8	14.7	80.2	20.7	6.9
27	33.4	N	17:28	12.1	4.5	0.5	0.5	0.0	0.0	0.5	1.0	3.0	1.0	14.8	6.8	9.8	8.6
28	41.8	NNW	14:04	14.8	4.0	0.0	0.0	0.0	0.0	0.0	1.0	3.0	7.1	14.8	47.9	17.7	7.5
29	43.2	N	12:54	16.5	9.0	1.0	1.0	0.5	0.0	0.5	1.0	3.0	14.5	14.9	97.3	26.0	3.1
30	21.5	E	14:37	6.5	7.5	1.0	1.0	0.5	0.0	0.5	1.0	3.0	14.3	15.0	95.6	25.6	3.8
Total													276.8	420.1	65.9	552.4	202.0
Mean					-0.5	-0.5	-0.6	-0.5	-0.4	0.3	1.1	3.2					
Extreme	51.8	SE	15:27														
Date	17																

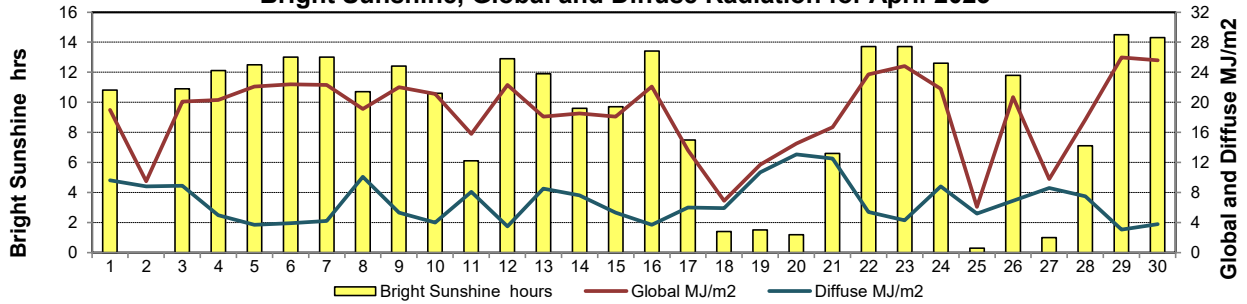
GLOSSARY OF TERMS

Degree-days	Radiation
T _m Mean Temperature	Bright Sunshine is the unobstructed direct radiation from the sun, as opposed to the shading of a location by clouds or by other atmospheric obstructions.
Growing (T _m -5°C); if T _m ≤ 5°C then GDD = 0	Diffuse is radiation reaching the earth's surface after having been scattered from the direct solar beam
Heating (18°C-T _m); if T _m ≥ 18°C then HDD = 0	Global is the sum of the direct solar and diffuse radiation
Cooling (T _m -18°C); if T _m ≤ 18°C then CDD = 0	Relative Humidity The ratio of the air's water vapour content to its water vapour capacity which changes with temperature.
T Trace of Precipitation	Air Pressure The force exerted by the weight of a column of air above a given point
SOG Depth of snow-on-the-ground	Wind Gust The daily highest instantaneous value recorded irrespective of direction and/or duration
Red Cell no data available	
Red Number manual calculation	

Wind Speed for April 2023

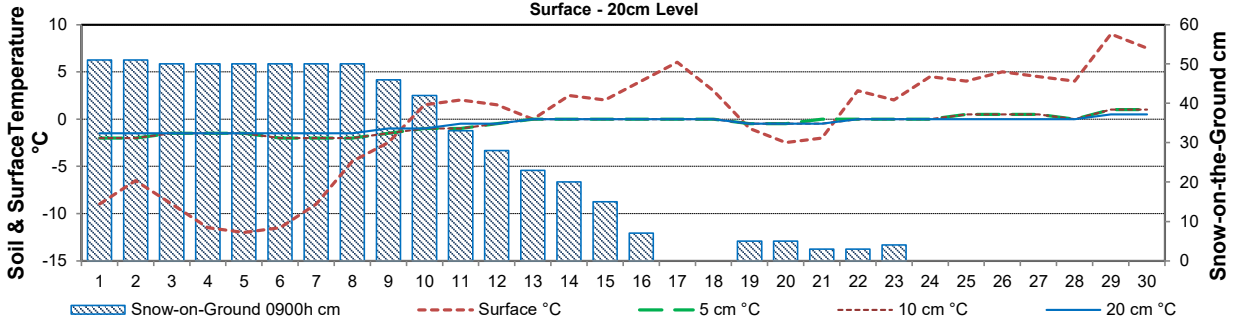


Bright Sunshine, Global and Diffuse Radiation for April 2023



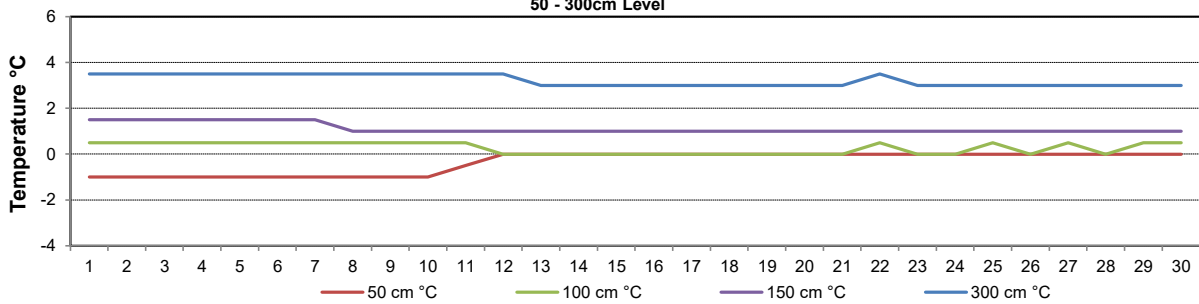
Soil Temperatures for April 2023

Surface - 20cm Level



Soil Temperatures for April 2023

50 - 300cm Level





SRC CLIMATE REFERENCE STATION DAILY DATA REPORT
CONSERVATION LEARNING CENTRE

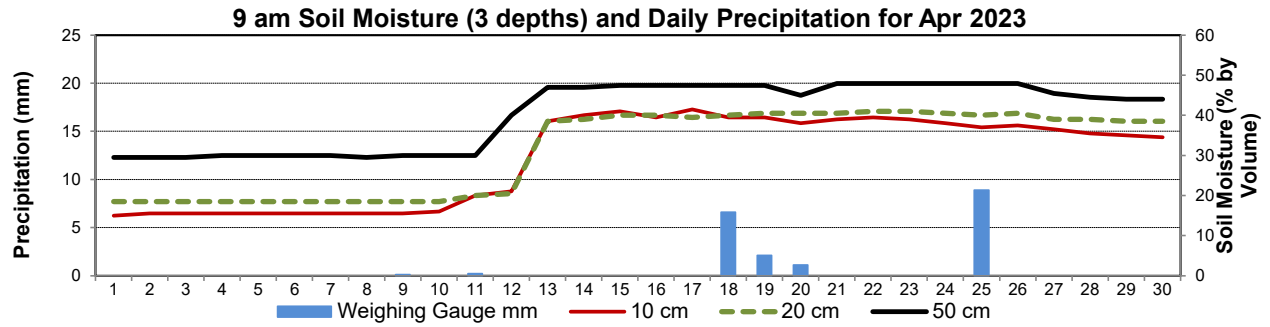
Saskatchewan 53.03°N 105.77°W 451m asl Estab. 2011

April 2023

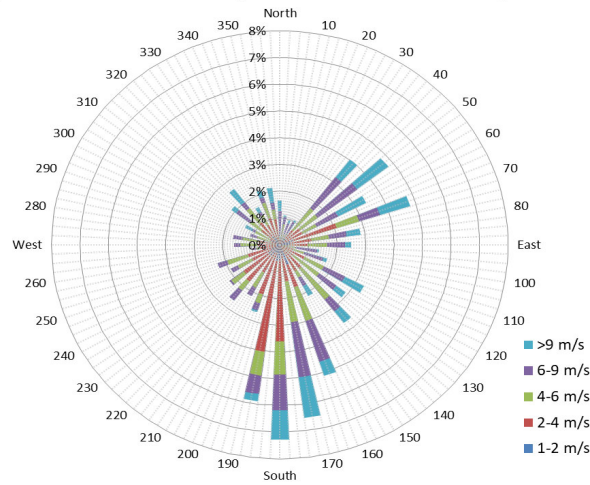
Day	2 meter Wind Speed			Soil Moisture at 0900 hrs (rounded to the 0.5%)													
	Daily Average	Max ½ hr Avg	½ hr Extreme Max	10 cm	20 cm	50 cm											
	km/h	km/h	km/h	% by volume (soil type is Clay Loam)													
1	9.0	20.3	27.0	15.0	18.5	29.5											
2	18.0	24.9	33.5	15.5	18.5	29.5											
3	6.0	11.4	16.8	15.5	18.5	29.5											
4	5.0	11.7	15.2	15.5	18.5	30.0											
5	5.0	11.6	13.7	15.5	18.5	30.0											
6	7.0	15.4	21.6	15.5	18.5	30.0											
7	16.0	25.2	35.2	15.5	18.5	30.0											
8	15.0	23.4	31.8	15.5	18.5	29.5											
9	8.0	14.8	19.7	15.5	18.5	30.0											
10	11.0	16.2	21.8	16.0	18.5	30.0											
11	7.0	14.8	18.9	20.0	20.0	30.0											
12	10.0	20.3	31.6	21.0	20.5	40.0											
13	5.0	8.8	15.2	38.5	38.5	47.0											
14	7.0	15.3	25.6	40.0	39.0	47.0											
15	7.0	16.3	25.0	41.0	40.0	47.5											
16	8.0	18.1	27.5	39.5	40.0	47.5											
17	14.0	25.4	38.7	41.5	39.5	47.5											
18	12.0	19.2	26.0	39.5	40.0	47.5											
19	21.0	28.0	37.1	39.5	40.5	47.5											
20	17.0	22.1	32.1	38.0	40.5	45.0											
21	8.0	12.5	19.7	39.0	40.5	48.0											
22	4.0	9.6	18.9	39.5	41.0	48.0											
23	5.0	11.1	22.0	39.0	41.0	48.0											
24	9.0	18.5	31.8	38.0	40.5	48.0											
25	11.0	20.7	32.1	37.0	40.0	48.0											
26	12.0	23.0	30.2	37.5	40.5	48.0											
27	9.0	17.7	25.6	36.5	39.0	45.5											
28	10.0	20.2	31.6	35.5	39.0	44.5											
29	12.0	22.5	33.1	35.0	38.5	44.0											
30	3.0	10.0	19.9	34.5	38.5	44.0											
Total																	
Mean				30	31	40.4											
Extreme	21.0	28.0	38.7	41.5	41	48											
Date	0	0	0	0	0	0											

SRC proudly recognizes the following CRS supporters:

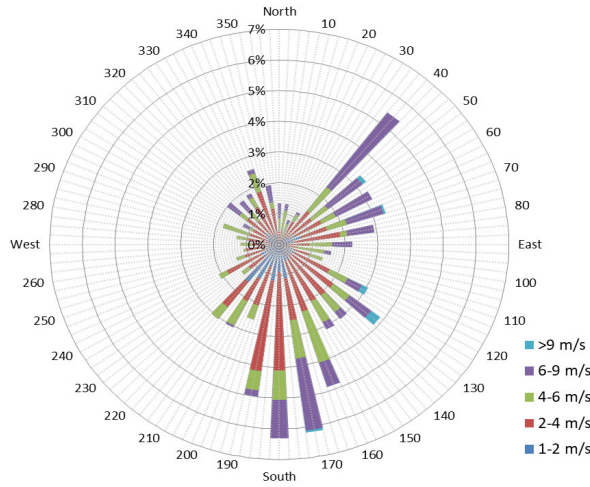




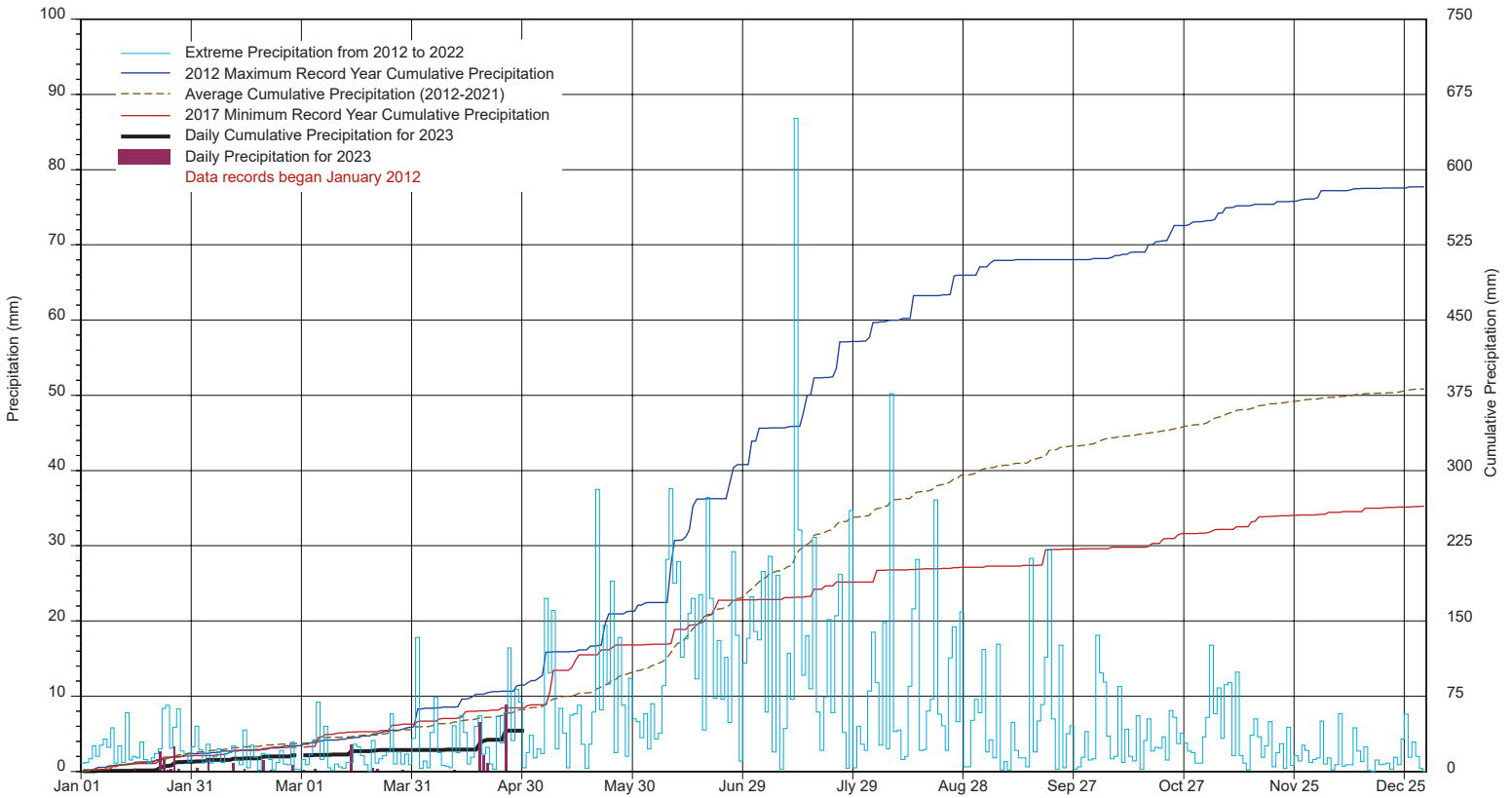
1/2 hr Maximum Wind Speed and Direction CLC Apr 2023



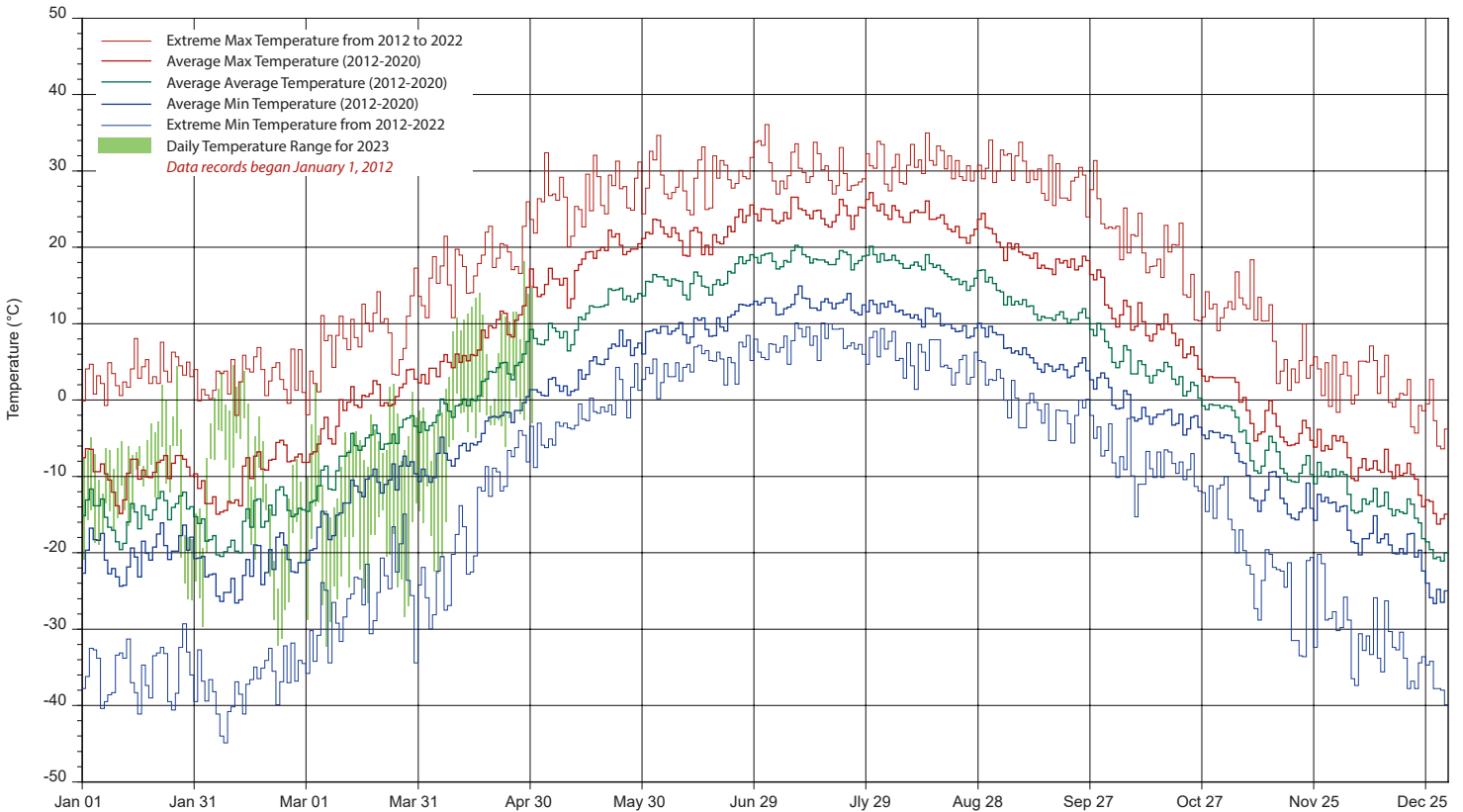
10 minute Average Wind Speed and Direction CLC Apr 2023



SRC's CLIMATE REFERENCE STATION at the Conservation Learning Centre 2023 PRECIPITATION AND AVERAGE



2023 TEMPERATURES AND AVERAGES



SRC proudly recognizes the following CRS supporters:

