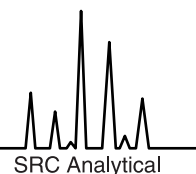


ANALYSIS OF SOIL, SEDIMENT, SLUDGE



Below is a guide for preparation and cost of analyses. Amount of wet sample necessary to obtain enough dry sample for analysis required is dependent on analysis required and on moisture content of the sample. **Please contact us to ensure enough sample will be provided for all your analytical requirements.** In many cases, preparation charges can be shared between analyses but are listed **separately** below. For most samples, drying (\$4.00) and grinding (\$5.00) will be necessary.

<u>Analysis</u>	<u>Price</u>	<u>Preparation</u>
Moisture	\$8.00	
Loss on Ignition (550C.)	\$15.00	
Solids, total	\$8.00	
Solids, volatile	\$15.00	
pH	\$5.00	Leach \$4
Specific Conductivity	\$5.00	Leach \$4
Cation Exchange Capacity (CEC)	\$24.00	
Carbon, total (geochem)	\$10.00	*
Carbon, inorganic, GC (for low concentrations)	\$50.00	
Carbonate by back titration	\$30.00	
Carbon, organic (geochem)	\$20.00	*
Carbon, organic, calculated	\$0	w/total and inorganic by GC
Nitrogen, Ammonia	\$14.00	Water leach \$10
Nitrogen, NO ₂ +NO ₃	\$14.00	Water leach \$10
Nitrogen, total Kjeldahl	\$14.00	Acid digest \$15
P, total	\$10.00	Acid digest \$15
P, inorganic	\$10.00	Acid digest \$15
P, organic, calc.	\$0	w/total and inorganic
Sulfate, acid soluble	\$10.00	Acid digest \$15
Sulfide	\$34.00	\$0 with total S and SO ₄
Total Sulfur	\$10.00	*
ICP metals scan (see page 13)	\$55.00	Acid digest \$15
- individual metals (other elements also available)	\$10.00 ea	Acid digest \$15
Arsenic	\$10.00	Acid digest \$15
Selenium	\$10.00	Acid digest \$15
Antimony	\$24.00	Acid digest \$15
Bismuth	\$24.00	Acid digest \$15
Mercury	\$24.00	Acid digest \$7
Chloride, water soluble	\$12.00	Water leach \$10
Cyanide	\$50.00	
Silica (gravimetric)	\$20.00	Fusion \$25.00
Phenolics	\$40.00	
Lead-210	\$72.00	Digest \$25
Polonium-210	\$55.00	Digest \$25
Radium-226	\$68.00	Fusion \$25
Thorium-228, -230, -232	\$80.00	Fusion \$25
Uranium	\$15.00	

* Subcontracted to another lab within SRC. Price is current at time of printing but is subject to change

The above prices are a guide only. Preparation charges and methods are chosen for the best possible analytical results. All above prices are subject to sample type and composition.

SOIL TESTING SERVICES

SALINITY PACKAGE*

\$50.00

-includes pH, EC, Sodium Absorption Ratio (SAR), % Saturation, Calcium, Magnesium, Sodium, Potassium, Sulfate, Chloride and Theoretical Gypsum Rate (TGR)

* Preparation charges such as drying and grinding are extra (see page 7)

A minimum of 500 grams of soil is required

ADDITIONAL PARAMETERS TO SALINITY PACKAGE:

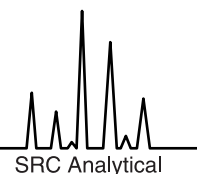
Ammonia nitrogen	\$14.00
Nitrate+Nitrite nitrogen	\$14.00
Phosphorus	\$10.00
Alkalinity (carbonate and bicarbonate)	\$12.00
Cation exchange capacity (CEC)	\$24.00

SAR (sodium absorption ratio)(calculated from Ca, Mg, Na) \$30.00 Water leach \$10

TRACE METALS ANALYSIS IN SOILS

ICP-AES Metals Scan (see page 13)	\$55.00	Acid digest \$15
-individual metals	\$10.00	Acid digest \$15
Arsenic	\$10.00	“
Selenium	\$10.00	“
Antimony	\$24.00	“
Bismuth	\$24.00	“
Mercury	\$24.00	Acid digest \$7

ANALYSIS OF SOLIDS (MISCELLANEOUS)



PHYSICAL PARAMETERS

Ash %	\$15.00	
Color, odour, texture	\$2.00	Each
Density by displacement	\$15.00	
Water insolubles	\$15.00	
Sieve analysis (Tyler mesh)	\$10.00	per sieve
Specific Gravity	\$25.00	*
Grain size analysis (%sand/silt/clay; dispersion technique)	\$30.00	*
Grain size analysis as above plus sand screening into 5 fractions	\$40.00	*

ACID BASE ACCOUNTING (ABA):

Acid Neutralization Potential (AN) (includes paste pH)	\$40.00	
Acid Producing Potential (AP) (sulfide calc.)		
Sulfur	\$10.00	*
Sulfate	\$25.00	

CHEMICAL PARAMETERS

Amines (by titration) (primary or total)	\$50.00	
Chlorine: Available	\$25.00	Water leach \$10
Chlorophyll a, b, c on algae	\$30.00	
Chromium VI (hexavalent)	\$30.00	Extra prep. \$15
Fluoride	\$15.00	Fusion \$25
Halogens (Cl, Br, I): (see note on page 14)		
EOX (Extractable organic halogens) by NAA	\$105.00	
Chlorine by NAA	\$70.00	
Hydrocarbons: TPH (gravimetric or IR)	\$45.00	
Oil and Grease (gravimetric or IR)	\$40.00	
Purgeable and Extractable by GC (see page 28)		
Oxalates (total or water soluble)	\$50.00	
Oxygen:		
Immediate Oxygen Demand	\$30.00	
5-day incubation (BOD)	\$35.00	

* Subcontracted to another lab within SRC. Prices subject to change.