

GenServe Laboratories™

Rapid Wheat DNA Testing

Smart Science
Solutions

Between 2000 and 2008, Agriculture and Agri-Food Canada (AAFC) collaborated with industry stakeholders to begin developing DNA-based technology that could identify wheat classes and varieties. AAFC's research project identified single nucleotide polymorphism (SNP) as a DNA analysis method to distinguish between Canadian wheat classes.



The Project - Rapid Wheat DNA Testing

- The SNP testing technology provided by AAFC is being validated for specificity by the Saskatchewan Research Council (SRC) to determine if it can be scaled up from a research experiment to a high volume commercial test.
- SRC has met with industry players regarding development of this technology and while interest remains high in the potential testing service,

grain company and industry organization personnel made it clear the technology must meet a number of specific minimum criteria including a test that can be turned around in less than 24 hours, will be consistent and 100% reliable.

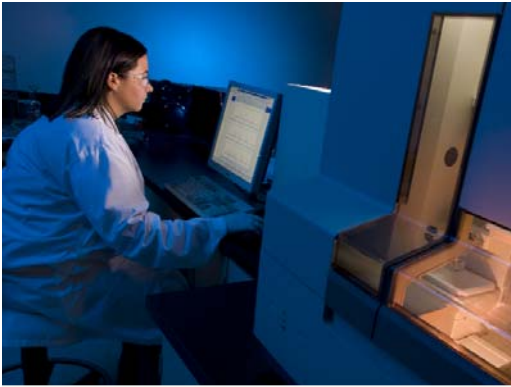
- If SRC is confident that rapid wheat DNA testing can be carried out on a commercial scale then SRC will proceed with organizing the services. More information on the process and procedures will be provided to all interested parties.
- As part of the agreement with AAFC, SRC is also using DNA analysis to test up to 150,000 seeds for wheat midge resistance in support of the midge refuge strategy.
- To receive more information on our research and its progress, please visit us online for updates at www.src.sk.ca/wheatDNA.

Contacts:

GenServe Laboratories
Telephone: 306-933-7700
genserve@src.sk.ca

www.src.sk.ca





SRC GenServe Laboratories™ is operated by the Saskatchewan Research Council (SRC™) in Saskatoon, the heart of Canada's agricultural biotechnology industry. Our goal: making advanced genomics research available to a broad range of corporate, government and non-profit clients.

About SRC

SRC™ is Saskatchewan's leading provider of applied R&D and technology commercialization. With more than 300 employees, \$41 million in annual revenue and 62 years of R&D experience, our corporation provides services and products to companies around the world.

SRC's various commercial laboratories work across numerous sectors and have developed a positive reputation for providing high quality service with independent results. Our industry-accredited laboratories include the ISO-certified SRC Geoscientific Laboratories, which are known for supplying world class uranium and diamond analysis.

About GenServe Laboratories™

SRC GenServe Laboratories™ is a commercial genetics facility with broad experience in providing the highest standard of genetic services and applied research to the biotechnology and agriculture industries.

SRC GenServe Laboratories™ provides DNA tests for agricultural crops and livestock, including animal parentage verification, gene mapping and DNA fingerprinting for plant varieties.



The GenServe Team: Our people make all the difference. At SRC GenServe Laboratories™, our first-class team of science and support staff provide the highest levels of service and expertise—making genomics research work for you.